

2007 SUBARU  
FORESTER



# THINK

## WHAT MAKES A SUBARU, A SUBARU?

It is a heritage of innovation and spirited performance. A dedication to keeping you safe, with the control to avoid an accident and the protection to survive one. A commitment to building smart and efficient vehicles that fit your life. In creating an intelligently sized SUV that is thoughtfully designed inside and out, we remain focused on these ideals. Because we never stop thinking of vehicles that go beyond your expectations.



Forester 2.5 XT Limited shown in Crystal Gray Metallic.



**AUXILIARY AUDIO JACK FOR MEDIA PLAYERS** Keep your personal playlists handy accessible with the new auxiliary audio jack, which will accommodate your iPod® or virtually any portable media player. Just plug it in and your tunes will flow through the speakers.

**HEATED SEATS** A thoughtful interior welcomes you as soon as you step inside. Shivering on cold mornings while waiting for the cabin to warm up becomes a thing of the past with the available heated seats for the driver and front passenger. The dual setting lets you choose between warm and extra toasty.

**SIRIUS™ SATELLITE RADIO** Listen to rock, jazz, oldies—most any format you imagine—without loss of signal and in digital-quality sound, wherever your journey may take you. Most Foresters are prewired for satellite radio so that you can access the SIRIUS feed with available equipment and your paid subscription.

# The Subaru FORESTER “Best Small SUV,” three years in a row!

Its intelligent size and remarkable versatility redefine what a sport utility vehicle can do. Its crash test scores are at the top of its class. Its balanced and powerful boxer engine, surefooted Subaru Symmetrical All-Wheel Drive and agile handling combine to take the SUV to new levels of control, drivability and safety. Little wonder the experts at *Car and Driver* continue to name it the “Best Small SUV.” It all provides the most valuable asset of all—peace of mind.

## **2.5 X**

Motivated by a stout 173-horsepower engine and offering extraordinary flexibility with generous cargo capacity, the Forester 2.5X is only modest in its price point.

## **2.5 X | Premium Package**

Along with all the convenience of the 2.5X, this optional package has many additional features like a panoramic moonroof, alloy wheels, automatic climate control and heated seats.

## **2.5 X | L.L.Bean® Edition**

With unique leather-trimmed upholstery, wood and leather-wrapped steering wheel and a durable cargo-area lining, it's as stylish as it is versatile. And it comes standard with a 4-speed automatic transmission.



## **2.5 XT | Limited**

The Forester flagship, with a 224 turbocharged horsepower engine, leather-trimmed upholstery and luxurious features such as a premium audio system and panoramic moonroof.

1 Car and Driver, March 2006.



Forester 2.5X L.L.Bean® Edition shown in Obsidian Black Pearl/Urban Gray Metallic.

The wide sky. The road ahead.

# FEEL

All the important people with you.

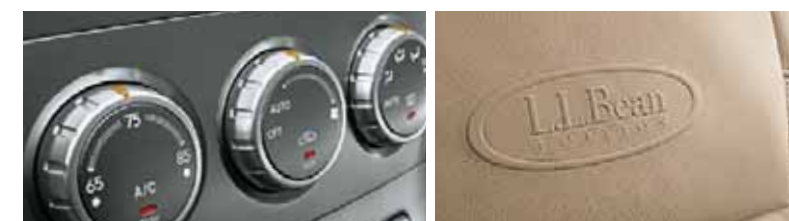
Open your mind to the possibilities.





Forester 2.5X L.L.Bean Edition shown with Desert Beige leather.

**COMFORT** The Forester brings new levels of control not just on the road, but also over your environment. Its spacious cabin, complete with utility, convenience and premium features, lets you govern your surroundings to your exact preferences. Choose upscale cloth upholstery or the luxury of leather, with unique Alcantara® accents on the L.L.Bean® Edition. Find your ideal driving position with the available 8-way power driver's seat and take the chill off with dual-stage seat heaters. Feel the beat from the available in-dash six-disc CD changer while passengers enjoy the roomy rear-seat comfort. Because every journey is enhanced when the family is content.



**AUTOMATIC CLIMATE CONTROL** Just set it and drive. It's easy to find the most comfortable environment for you and your passengers with available climate control, which automatically adjusts the heat or air conditioner to maintain your chosen temperature. The air filtration system keeps harmful particles out, and seven fan settings let you customize the airflow.

**L.L.BEAN EDITION** Like its namesake, ruggedness meets style. Inside the dual-toned exterior are seats trimmed in supple Desert Beige leather with perforated Alcantara on the seat bolsters, and L.L.Bean embossing. And a wood and leather-wrapped shifter handle and MOMO® brand steering wheel wait for your input.

**PANORAMIC MOONROOF** The wide-open sky, available at the touch of a button. Significantly larger than conventional sunroofs, the available panoramic moonroof lets the sunshine and fresh air in for both the front and rear passengers. Enjoy the outdoors without leaving your car.



## VERSATILITY

Inside the intelligently proportioned exterior is an interior just as well thought out. The ample, flexible space helps you carry all the accoutrements of your busy life. Start with the spacious cargo area with low liftover height. Follow up with rear seats split 60/40 for greater versatility. A wide array of storage bins, pockets, tiedowns and hooks lets you organize and secure. And it comes with a roof rack that holds up to 150 lbs. Go ahead, bring everything you need.



# 68.6

cu. ft.

**CARGO VOLUME** The cargo area of the Forester offers a highly configurable space that lets you transport a myriad of differently sized objects. Put both rear seatbacks up to carry up to three passengers. The 60/40 split-folding rear seats allow for two passengers and a long article, or one passenger and gear for your entire team. Or fold both rear seatbacks for up to 68.6 cu. ft. of capacity.



Forester 2.5 XT Limited shown with Anthracite Black leather.

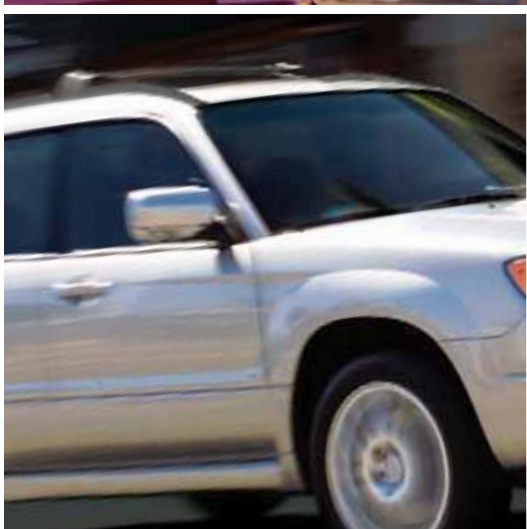
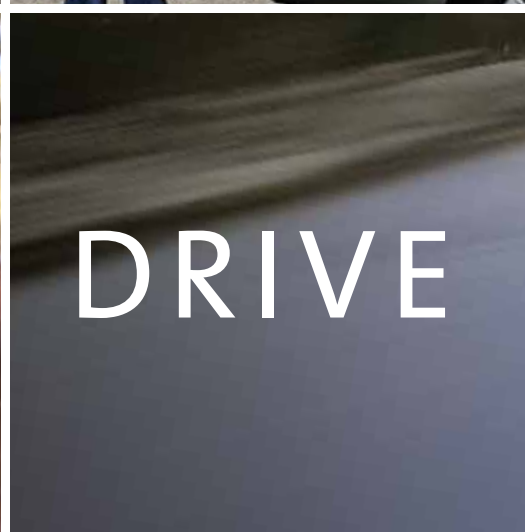


**CARGO-AREA UNDER-FLOOR STORAGE** Under the cargo-area floor, you'll find a compartmentalized tray that's perfect for organizing small items prone to sliding around. And they're kept out of sight, away from prying eyes.



**MULTIFUNCTION CENTER CONSOLE** Have access to the items you want close to you during the drive. Flip its lid, and rear-seat passengers get two extra cupholders. And the dual-tiered center console provides a 12V power outlet and a sliding armrest.





Forester 2.5X shown in Garnet Red Pearl with optional Premium Package and accessory roof-mounted crossbars with ski/snowboard attachment.



# CONFIDENCE TO ARRIVE SAFELY.

At Subaru, we have a different take on safety. Because we believe our innovations like standard Subaru Symmetrical All-Wheel Drive and boxer engine not only give you traction and stability for active driving, but also active safety to help steer clear of an accident altogether. With advancements to protect you in an unavoidable collision, it's the kind of safety that lets you drive with confidence. **It's what makes a Subaru, a Subaru.**

The Best Rollover Rating among all SUVs!  
★★★★★ for front and side impact collisions!<sup>1</sup>

- National Highway Traffic Safety Administration

<sup>1</sup> Government star ratings are part of the National Highway Traffic Safety Administration's (NHTSA's) New Car Assessment Program. Visit [safercar.gov](http://safercar.gov) for more information.

Every Subaru was designed to achieve the highest crash test scores in its class. But to help keep you from having to test it out yourself, we've engineered the Forester to provide control and agile handling characteristics. Then we equipped it with active safety features that help you to negotiate an

emergency situation. In the event of an impact, its numerous passive safety systems help to minimize the results of the encounter. It all combines to form a multidimensional approach to safety that results not only from selected features, but from every aspect of the vehicle.



## Subaru Symmetrical All-Wheel Drive

There are only four parts of the car that touch the pavement—your tires. And you want to know that they’re adhering to the road, no matter what the path or the weather has in store. The unique Subaru Symmetrical All-Wheel Drive system delivers traction that you can depend on. Its ideal balance helps to ensure stability and poise. And its efficiency at transmitting power delivers greater grip and quick response to slippage. Providing you with better handling in slick conditions, and enhanced performance in any condition. It’s a system that puts you in control of your Forester, and possibly your well-being.

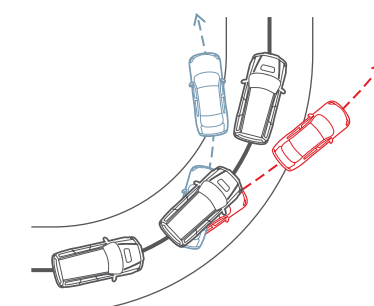
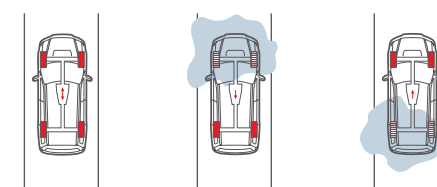
# MORE PREDICTABLE TRACTION

IT’S WHAT MAKES A SUBARU, A SUBARU.

**CONTINUOUS AWD** Under normal conditions, power is split 50/50 between the front and rear wheels. Should wheel slippage occur, the viscous-center locking differential that is coupled with the 5-speed manual transmission automatically helps transfer power to the wheels with the most amount of traction.

**ACTIVE AWD** Paired with the available automatic transmission, the Active AWD system monitors parameters like wheel slippage and vehicle speed, adjusting power to the front or rear wheels with the most traction. This computer-controlled system anticipates and actually seeks to maintain optimal adhesion.

**CONTROL** The Subaru Symmetrical All-Wheel Drive system, with its fore, aft and lateral balance, results in neutral cornering and superior handling. Unlike two-wheel-drive vehicles, which may be more prone to understeer or oversteer, the full-time AWD automatically transfers power to all four wheels. This results in greater traction and cohesion for more predictable handling.

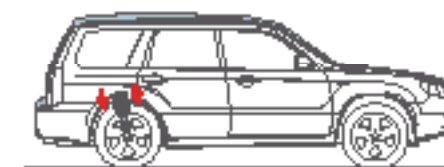


**HANDLING** Safety hasn't traditionally been synonymous with fun to drive. But the Forester proves that you can have the best of both. Every drivetrain component and every chassis part has been engineered to optimally blend control, performance and comfort. From the precise rack-and-pinion steering with its quick response to the 4-wheel disc brakes<sup>1</sup> and fully independent suspension, it's all geared toward providing driving pleasure with no compromise on the confidence-inspiring security that defines the Forester.

<sup>1</sup> Not available on base Forester 2.5X.



**HEAVY-DUTY RAISED SUSPENSION** Unlike most SUVs, the Forester provides nimble and agile handling thanks to its car-bred, SUV-optimized 4-wheel independent suspension. While making quick work out of irregularities in the road, it provides swift response to steering input. Yet its ground clearance of 8.1 inches (7.9 in. for 2.5 XT Limited) is comparable to many truck-based SUVs.



**SELF-LEVELING REAR SUSPENSION** Exclusive to the Forester 2.5X L.L.Bean® Edition, this system features self-adjusting rear struts that react to load weight to maintain optimum vehicle ride height. The result is consistent ground clearance and enhanced balance overall, even when you've filled its considerable space with gear. Or taken advantage of its 2,400-lb towing capacity.



Forester 2.5 XT Limited shown in Urban Gray Metallic.

**Subaru Boxer Engine** It's what makes a Subaru, a Subaru.

Press the accelerator to get outstanding power, along with a healthy dose of innovation. At the heart of the Forester is our legendary SUBARU BOXER engine, with pistons laid flat in horizontal opposition. Used in every Subaru, this design

lowers the center of gravity, promoting precise handling and enhanced stability, while increasing durability and reducing vibration. It's the force that gives you greater control, and greater safety.

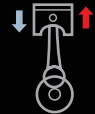


**LESS VIBRATION** The 180-degree boxer engine layout allows the pistons to move in exact horizontal opposition, effectively negating the vibrations of the opposing pistons. Its smoothness not only sweetens power delivery, it helps increase longevity.

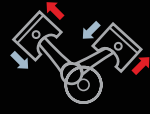
**GREATER STABILITY** The SUBARU BOXER engine's lightweight, compact design lowers the vehicle center of gravity. Providing more stable handling characteristics to better keep the car along its intended path, especially when changing direction quickly.



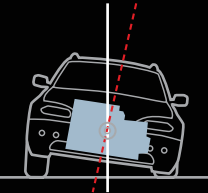
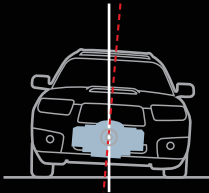
SUBARU BOXER ENGINE



INLINE ENGINE



V-TYPE ENGINE





**PERFORMANCE** Forester engines are rally-proven for remarkable reliability. Constructed of aluminum-alloy for reduced weight and time-tested durability. Enhanced with i-Active Valve Lift System in the 2.5X and Active Valve Control System in the 2.5 XT Limited for abundant horsepower and a broad torque curve. And Electronic Throttle Control (ETC) provides a more precise response to your right foot. With such exceptional engines to motivate the Forester, imagine how the Forester will motivate you.



**2.5X** The naturally aspirated four-cylinder engine makes 173 horsepower for spirited acceleration, while providing superior fuel economy of 22 city/29 highway mpg.<sup>1</sup>

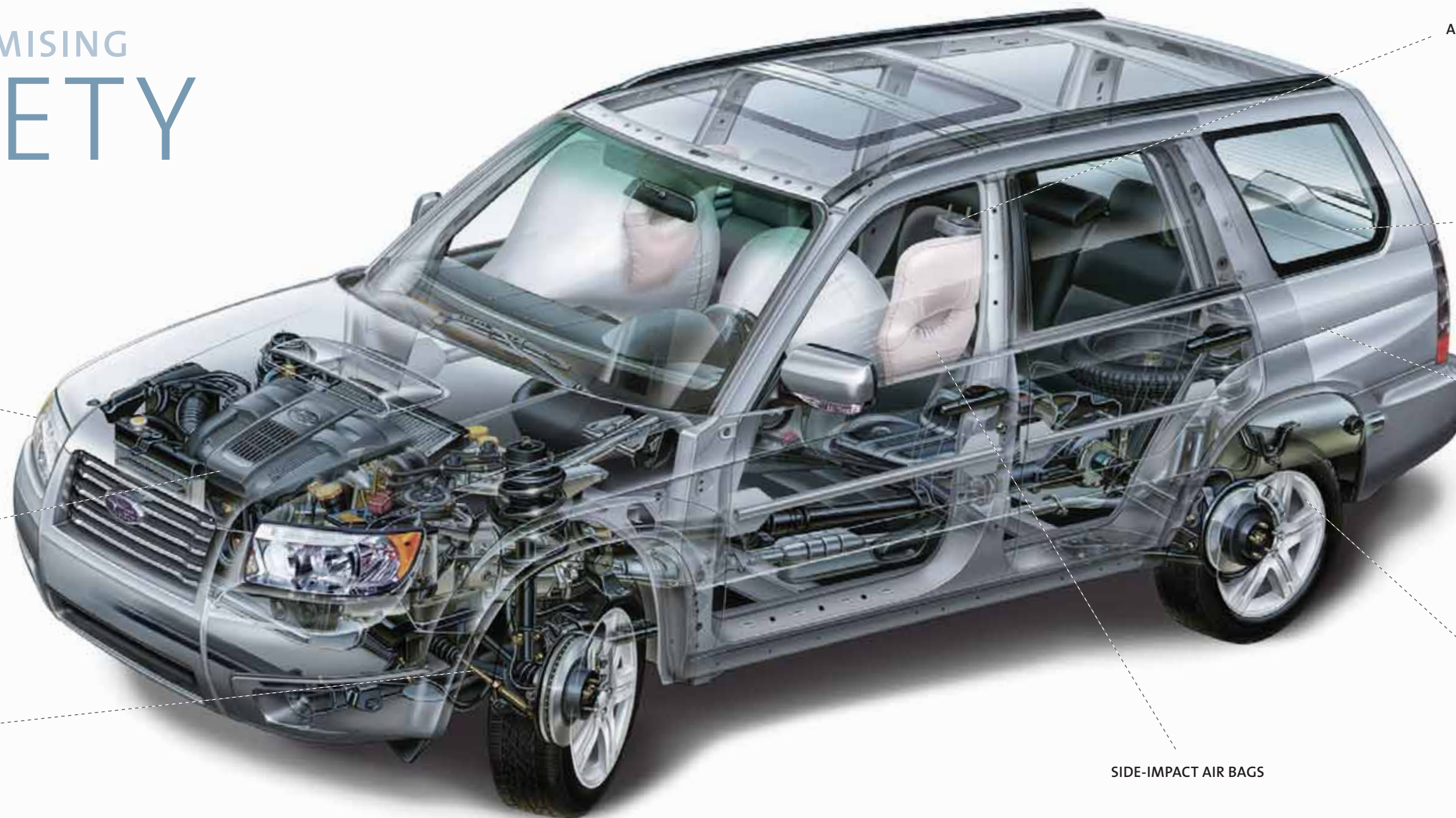
**2.5 XT** The functional hood scoop is the only external hint to the thrill that awaits you. Fortified by an intercooled turbo-charger that raises horsepower to 224 and torque to 226 lb-ft, the 2.5 XT Limited delivers proven acceleration that rivals or bests that of many sports cars. They'll never see it coming.

**5-SPEED MANUAL TRANSMISSION** For those who prefer to shift on their own. Fully synchronized to deliver smooth and precise shifts, our manual transmission also features a Hill Holder\* system to help minimize rolling backwards on inclines.

**4-SPEED AUTOMATIC TRANSMISSION** Around town, this smooth-shifting unit maximizes fuel economy. For more spirited driving, the transmission adapts to your driving patterns for better drivability.

<sup>1</sup> With 5-speed manual transmission.

# UNCOMPROMISING SAFETY



DAYTIME RUNNING LIGHTS

LOW PLACEMENT OF BOXER ENGINE

SYMMETRICAL ALL-WHEEL DRIVE

ACTIVE HEAD RESTRAINTS

INCREASED VISIBILITY

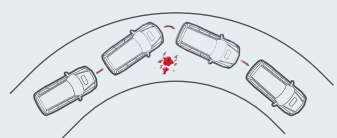
RING-SHAPED REINFORCEMENT FRAME

ELECTRONIC BRAKE-FORCE DISTRIBUTION

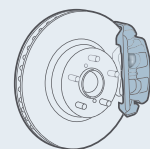
SIDE-IMPACT AIR BAGS

**ACTIVE SAFETY** Our multidimensional approach to keeping you safe only begins with the traction of Subaru Symmetrical AWD and balanced and responsive handling to keep you in control. These inherent advantages are supported by a comprehensive array of innovative and robust features to help protect you in an emergency. To help you avoid an impending accident, Forester is equipped with 4-wheel antilock brakes (ABS) which prevent lockup so you can retain steering control, and Electronic Brake-force Distribution (EBD) for more even and stable braking.

**PASSIVE SAFETY** Subaru innovations not only help you avoid a collision. They help you and your passengers survive one, thanks to features like front seat belt pretensioners and load-limiters, crumple zones, side-impact beams and a Ring-Shaped Reinforcement Frame to help better absorb the impact of a crash. And a full array of air bags offers protection for the front and sides.<sup>1</sup> Since its introduction, the Forester has consistently received the highest crash-test scores in its class, in both federal governmental and Insurance Institute for Highway Safety (IIHS) testing.<sup>2</sup>



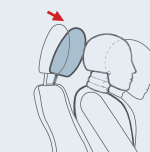
**CONTROL** Standard full-time AWD automatically adjusts power to all four wheels, helping to maintain greater traction, no matter what the road surface or the weather has in store, helping you to keep better control of your Forester.



**ELECTRONIC BRAKE-FORCE DISTRIBUTION** Working in conjunction with the ventilated front and 4-wheel antilock brakes, EBD offers more even and stable braking by optimally apportioning power front to rear in emergency or heavy braking situations.



**SIDE-IMPACT AIR BAGS** Mounted in the front seats to help provide the best protection no matter what our ideal seat position is. Designed to help protect both your head and torso, they helped the Forester achieve the highest crash test safety scores in its class.



**ACTIVE HEAD RESTRAINTS** In the event of a rear-end collision, the active front-seat head restraints provide another layer of protection by automatically moving forward to cradle your head to help minimize the possibility of whiplash.

<sup>1</sup> Always wear seat belts. Children should be properly restrained in the rear seat. <sup>2</sup> For more information, contact the Insurance Institute for Highway Safety or visit their website at [www.iihs.org](http://www.iihs.org). Government star ratings are part of the National Highway Traffic Safety Administration's (NHTSA's) New Car Assessment Program. Visit [Safercar.gov](http://Safercar.gov) for more information.





### Accessories

Outfit your Subaru to be as unique as your adventures. Backed by a 3-year/36,000-mile limited warranty,<sup>1</sup> Genuine Subaru Accessories give you the ability to take everything—and anything—you need.

Forester 2.5 XT Limited shown in Urban Gray Metallic.



**HEAVY-DUTY ROOF CARGO BASKET** Shown above with fork-mounted bike carrier and front-wheel holder (each sold separately). Accommodates up to 100 pounds. Vehicle also shown with splash guards and rear bumper cover.

**TURBO BOOST GAUGE** Illuminated turbo boost gauge mounts conveniently to side of steering column.

**AUTO-DIMMING MIRROR WITH COMPASS** When bright headlights from the rear are detected, the rearview mirror automatically darkens to reduce glare. Includes electronic compass. Also available with HomeLink.<sup>®</sup>

**CARGO TRAY** Help protect the carpeted floor from your muddy gear with this rugged tray that lines the cargo area.

#### AVAILABLE ACCESSORIES

- SIRIUS™ Satellite Radio
- Crossbar Set (square)
- Roof-mounted Bike Attachment
- Roof Cargo Carriers
- Kayak Carrier
- Trailer Hitch
- Hitch-mounted Bike Attachment
- Cargo Bin
- Compartment Separator/Dog Guard
- Severe Weather Companion
- Cargo-area Spotlight
- Auto-dimming Rearview Mirror with Compass and HomeLink
- Security System Shock Sensor
- 6-disc In-dash CD Changer
- Upgraded Speakers
- Tweeter Speaker Kit
- Subwoofer/Amplifier
- Leather Shift Knobs
- All-weather Mats
- Hood Protector
- Front Bumper Underguard
- Rear Spoiler
- Engine Block Heater
- For a complete list of available accessories, log on to [www.subaru.com](http://www.subaru.com)

<sup>1</sup> Accessories backed by 3-year/36,000-mile New Car Limited Warranty when installed at time of vehicle purchase. For complete details on warranty coverage and exclusions, see your Subaru dealer or log on to [www.subaru.com](http://www.subaru.com).



### Ownership Benefits

Enjoying your Subaru for years to come—that's the promise of our comprehensive warranties and roadside assistance program. It's a fact attested by the 96% of Subaru vehicles sold in the past 10 years that are still on the road today.<sup>1</sup> It's the confidence you feel when you get behind the wheel.

**NEW CAR LIMITED WARRANTY**  
3 years or 36,000 miles, whichever comes first.

**POWERTRAIN LIMITED WARRANTY**  
5 years or 60,000 miles, whichever comes first.

**WEAR ITEM LIMITED WARRANTY**  
3 years or 36,000 miles, whichever comes first.

**RUST PERFORATION LIMITED WARRANTY**  
5 years, unlimited mileage.

**THE SUBARU ROADSIDE ASSISTANCE PROGRAM** covers all 2007 Subaru vehicles during the first 3 years or 36,000 miles, whichever comes first. By calling the toll-free number in the Owner's Information Kit, Subaru owners can take advantage of any of the following benefits:

24-hour Roadside Assistance, seven days a week, 365 days a year, throughout the United States.

Emergency Towing Service to the nearest authorized Subaru dealer.

Emergency Roadside Assistance for jump starts, gasoline (up to two gallons), flat tire change, emergency lockout service (lost key or key is locked in the vehicle) and emergency fluid replacement.

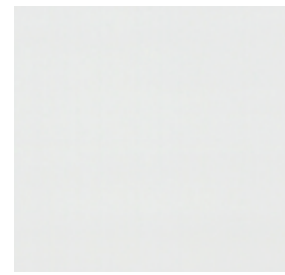
**SUBARU ADDED SECURITY<sup>®</sup>** could be the most important option you choose. Protect your investment with a Subaru Added Security extended service contract—the **only** one backed by Subaru of America, Inc. Ask your salesperson for coverage details and assistance in selecting the plan that's best for you, up to 7 years or 100,000 miles.

**SUBARU.COM** begins your Subaru experience. Here, you can find extensive information, including specs, photos and reviews. Build your own Subaru, locate dealers and schedule a test drive. After your purchase, activate your free My.Subaru site, where Subaru owners can track their vehicle's service history, schedule service appointments, receive special offers exclusive to My.Subaru members and much more.

<sup>1</sup> For complete warranty and program information, including coverage and exclusions, see your Subaru dealer.  
<sup>1</sup> Based on R. L. Polk & Co. vehicle registration statistics for period ending 7/31/05.

## Forester Specifications

### Paint



Aspen White



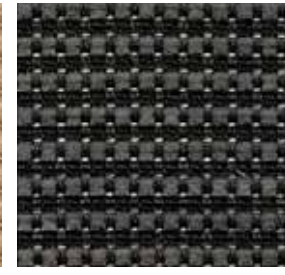
Champagne Gold Opal



Crystal Gray Metallic



Desert Beige Cloth



Graphite Gray Cloth

### Upholstery



Garnet Red Pearl



Newport Blue Pearl



Obsidian Black Pearl



Anthracite Black Leather



Desert Beige Leather



Urban Gray Metallic



Crystal Gray Metallic/  
Urban Gray Metallic



Evergreen Metallic/  
Urban Gray Metallic



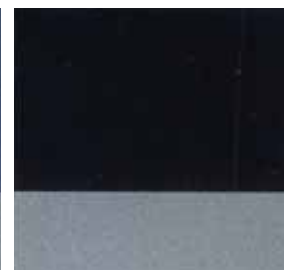
Desert Beige Leather/Alcantara®



Garnet Red Pearl/  
Urban Gray Metallic



Newport Blue Pearl/  
Urban Gray Metallic



Obsidian Black Pearl/  
Urban Gray Metallic



Satin White Pearl/  
Platinum Silver Metallic

### FORESTER

#### Color Combinations

PAINT	UPHOLSTERY	2.5 X		2.5 X L.L.BEAN® EDITION	2.5 XT LIMITED	
		Desert Beige Cloth	Graphite Gray Cloth	Desert Beige Leather/Alcantara <sup>1</sup>	Anthracite Black Leather	Desert Beige Leather
Aspen White		●	-	-	-	●
Champagne Gold Opal		●	-	-	-	●
Crystal Gray Metallic		-	●	-	●	-
Garnet Red Pearl		●	-	-	-	●
Newport Blue Pearl		●	-	-	-	●
Obsidian Black Pearl		-	●	-	●	-
Urban Gray Metallic		-	●	-	●	-
Crystal Gray Metallic/Urban Gray Metallic		-	-	●	-	-
Evergreen Metallic/Urban Gray Metallic		-	-	●	-	-
Garnet Red Pearl/Urban Gray Metallic		-	-	●	-	-
Newport Blue Pearl/Urban Gray Metallic		-	-	●	-	-
Obsidian Black Pearl/Urban Gray Metallic		-	-	●	-	-
Satin White/Platinum Silver Metallic		-	-	●	-	-

● Available - Not available

<sup>1</sup> Front and rear seats feature Alcantara accents.

ENGINE AND DRIVETRAIN	2.5 X	2.5 X L.L.BEAN® EDITION	2.5 XT LIMITED
Engine	2.5-liter SOHC aluminum-alloy 16-valve horizontally opposed 4-cylinder SUBARU BOXER engine with i-Active Valve Lift System	2.5-liter SOHC aluminum-alloy 16-valve horizontally opposed 4-cylinder SUBARU BOXER engine with i-Active Valve Lift System	2.5-liter DOHC intercooled, turbocharged aluminum-alloy 16-valve 4-cylinder horizontally opposed SUBARU BOXER engine with Active Valve Control System. Iridium spark plugs.
Power <sup>1</sup>	173 hp @ 6,000 rpm	173 hp @ 6,000 rpm	224 hp @ 5,600 rpm
Torque <sup>2</sup>	166 lb-ft @ 4,400 rpm	166 lb-ft @ 4,400 rpm	226 lb-ft @ 3,600 rpm
Compression ratio	10.0:1	10.0:1	8.4:1
Bore and stroke	99.5 x 79.0 mm	99.5 x 79.0 mm	99.5 x 79.0 mm
Intake system	Aluminum-alloy intake manifold	Aluminum-alloy intake manifold	Aluminum-alloy intake manifold. Turbo-charger with intercooler. Maximum boost pressure: 11.6 psi.
Fuel and ignition system	Sequential multiport fuel injection. Electronic Throttle Control (ETC). Engine management with integrated self-diagnostics and adaptive driving habits capability. Distributorless electronic ignition – 2.5X models. Direct ignition – 2.5 XT Limited.		
Manual transmission	Standard fully synchronized 5-speed manual with Hill Holder system and clutch pedal-controlled starter interlock	Not available	Standard fully synchronized 5-speed manual with Hill Holder system and clutch pedal-controlled starter interlock
Automatic transmission	Optional 4-speed adaptive electronic direct-control automatic	Standard 4-speed adaptive electronic direct-control automatic	Optional 4-speed adaptive electronic direct-control automatic
Emissions	Certified Low Emission Vehicle (LEV2) <sup>3</sup>		

### FUEL

Fuel economy (city/highway)	Manual: 22/29 mpg Automatic: 23/28 mpg	Manual: N/A Automatic: 23/28 mpg	Manual: 20/27 mpg Automatic: 21/26 mpg
Fuel requirement	Unleaded gasoline (87 octane) recommended	Unleaded gasoline (87 octane) recommended	Premium unleaded gasoline (91 octane) recommended <sup>3</sup>

### SUBARU SYMMETRICAL ALL-WHEEL DRIVE

Continuous All-Wheel Drive	Models equipped with 5-speed manual transmission utilize a viscous-type locking center differential and limited-slip rear differential. <sup>4</sup> Torque distribution normally configured at a 50/50-split front-to-rear. If wheel speed differs between front and rear axles, the system helps distribute power to the wheels with the most traction.
Active All-Wheel Drive	Models equipped with 4-speed automatic transmission utilize an electronically controlled variable multiplate transfer clutch and viscous-type limited-slip rear differential <sup>4</sup> to distribute power to where traction is needed. Sensors monitor parameters such as wheel slippage, throttle position and braking to help determine torque distribution to the wheels with optimum traction.

### CHASSIS

Steering	Engine-speed-sensing variable power-assisted rack-and-pinion. Turns lock-to-lock: 3.0. Turning circle: 34.8 ft. (2.5 XT Limited: 35.4 ft.).		
Suspension	4-wheel independent heavy-duty raised suspension		
	Front: Strut-type with internal rebound spring and lower L-arm. Antidive geometry. Front stabilizer bar.		
Brakes	Rear: Strut-type with internal rebound spring and parallel link. Antilift geometry. Rear stabilizer bar.	Rear: Strut-type with self-leveling feature. Antilift geometry. Rear stabilizer bar.	Rear: Strut-type with internal rebound spring and parallel link. Antilift geometry. Rear stabilizer bar.
	Standard: Front-wheel ventilated disc, rear-wheel drum. Optional: 4-wheel disc, ventilated front. <sup>5</sup>	4-wheel disc, ventilated front	4-wheel disc, ventilated front
Brake dimensions	Standard: 11.4 in. front/9.0 in. rear. Optional: 11.4 in. front/10.3 in. rear. <sup>5</sup>	11.4 in. front/10.3 in. rear	11.4 in. front/10.3 in. rear

### WHEELS AND TIRES

Wheels	Standard: 16 x 6.5" 5-spoke styled steel. Optional: 16 x 6.5" 8-spoke aluminum-alloy. <sup>6</sup>	16 x 6.5" 5-split-spoke aluminum-alloy. Gray finish.	17 x 7.0" 5-spoke aluminum-alloy
Tires	215/60 R16 94H M+S all-season		215/55 R17 93H M+S all-season

### EXTERIOR DIMENSIONS

Length	176.6 in.		
Height	65.0 in. (includes roof rails and crossbars)		
Width	68.3 in. (not including side mirrors)		
Wheelbase	99.4 in.		
Track (front/rear)	58.9 in./58.5 in.		
Curb weight (manual/automatic)	3,140 lbs./3,185 lbs.	N/A/3,205 lbs.	3,320 lbs./3,360 lbs.
Coefficient of drag (cd)	0.36		0.37
Ground clearance	8.1 in.		7.9 in.
Angle of approach	22.3°		22.4°
Breakover angle	18.9°		18.7°
Angle of departure	20.7°		19.5°
Towing capacity (Class I)	2,400 lbs.		

### INTERIOR DIMENSIONS

Headroom (front/rear)	39.8 in./39.8 in. (with moonroof: 39.1 in./37.0 in.)		
Legroom (front/rear)	43.6 in./33.7 in.		
Shoulder room (front/rear)	53.5 in./53.6 in.		
Passenger volume	95.4 cu. ft. (with moonroof: 91.5 cu. ft.)		
Cargo volume	30.7 cu. ft./68.6 cu. ft. with rear seat lowered (with moonroof: 28.9 cu. ft./64.5 cu. ft. with rear seat lowered)		

## Forester Specifications

EXTERIOR	2.5X	2.5X L.L.BEAN® EDITION	2.5 XT LIMITED
Multireflector low-beam and high-beam headlights	●	●	●
Multireflector fog lights	●	●	●
Aluminum-alloy hood	●	●	–
Aluminum-alloy hood with functional hood scoop (feeds turbocharger intercooler)	–	–	●
Body-color painted front and rear bumpers	●	–	●
Urban Gray or Platinum Silver painted front and rear bumpers	–	●	–
Black side mirrors	●	–	–
Larger body-color painted side mirrors with integrated turn signals	○ <sup>5</sup>	●	●
Black door handles	●	–	–
Body-color painted door handles	○ <sup>5</sup>	●	●
Body-color painted protective side cladding	●	–	●
Urban Gray or Platinum Silver painted protective side cladding	–	●	–
Heated side mirrors and windshield wipers de-icer	○ <sup>5</sup>	●	●
Two-speed windshield wipers with variable intermittent mode	●	●	●
Single-speed rear window wiper with fixed intermittent mode and de-icer	●	●	●
Black-finish raised roof rails with crossbars (150 lbs. capacity)	●	●	●
Panoramic power sliding-glass moonroof with auto-open/close feature	○ <sup>5</sup>	●	●

### SEATING AND TRIM

6-way manually adjustable driver's seat with manually adjustable lumbar support. 4-way manually adjustable front-passenger seat.	●	–	–
8-way power adjustable driver's seat with manually adjustable lumbar support. 4-way manually adjustable front-passenger seat.	○ <sup>5</sup>	●	●
Sport-design front seats	●	●	●
Dual-stage heated front seats	○ <sup>5</sup>	●	●
Cloth upholstery	●	–	–
Leather-trimmed upholstery	–	–	●
L.L.Bean-embossed leather-trimmed upholstery with perforated Alcantara® accents on seat bolsters.	–	●	–
60/40-split flat-folding rear seatback with center armrest	●	●	●
3-spoke steering wheel with manually adjustable tilt column	●	–	–
Perforated leather-wrapped 3-spoke steering wheel with manually adjustable tilt column. Perforated leather-wrapped shifter handle.	○ <sup>5</sup>	–	●
Wood and leather-wrapped 3-spoke MOMO® brand steering wheel with manually adjustable tilt column. Wood and perforated leather-wrapped shifter handle.	–	●	–
Perforated leather-wrapped parking-brake handle	○ <sup>5</sup>	●	●
Silver metallic trim on dash and console	●	●	●
Aluminum front-door sill plates with Forester logos	–	–	●
Carpeted floor mats	●	●	●

### CONVENIENCE FEATURES

Power front and rear windows with driver's auto-down	●	●	●
Power mirrors	●	●	●
Electronically controlled cruise control	●	●	●
Center console with sliding armrest, tray and storage compartment	●	●	●
Dual cupholders in front area of center console. Dual cupholders in underside of center-console armrest for rear passengers (rotating armrest 180° reveals cupholders). Dual retractable rear cupholders at base of rear-center console area. Bottle holder in each front door pocket.	●	●	●
12-volt power outlets in dash, center-console storage compartment and cargo area	●	●	●
Overhead console with dual maplights and sunglasses storage. Sun visors with concealed vanity mirrors.	●	●	●
Auto-dimming rearview mirror with compass	○ <sup>6</sup>	●	○ <sup>6</sup>
In-dash storage compartment	●	●	●
Retractable/removable cargo-area cover	●	●	●
Cargo-area-concealed multicompartment under-floor storage tray	●	●	●
Durable hard lining on back of rear seatbacks and cargo-area floor and side walls	–	●	–
4 cargo-area utility hooks. 2 cargo-area utility bars. 4 cargo-area tiedown hooks. 2 cargo-area grocery bag hooks.	●	●	●

### INSTRUMENTATION

Analog speedometer, tachometer, coolant temperature and fuel gauges with silver trim rings	●	●	●
Illuminated red gauge needles on black faces with white indicators	●	●	–
Sport-design instrumentation with illuminated red gauge needles on gray faces with white indicators	–	–	●
Digital display of odometer including dual-mode trip odometer, ambient temperature gauge and automatic transmission gear position (if equipped)	●	●	●
Digital clock	●	●	●

AUDIO SYSTEMS	2.5X	2.5X L.L.BEAN® EDITION	2.5 XT LIMITED
100-watt 4-speaker audio system with single-disc in-dash CD player	●	–	–
120-watt 4-speaker audio system with 6-disc in-dash CD changer and MP3/WMA player	○ <sup>5</sup>	●	–
155-watt 7-speaker premium audio system with subwoofer, 6-disc in-dash CD changer and MP3/WMA player	–	–	●
SIRIUS™ Satellite Radio capability <sup>4</sup>	○ <sup>5</sup>	●	●
Auxiliary audio jack for portable media players	○ <sup>5</sup>	●	●

### CLIMATE CONTROL

Manually adjustable CFC-free air conditioning system with air filtration system, rotary controls for temperature, 4-speed fan and airflow direction	●	–	–
Automatic climate control system with CFC-free air conditioning, air filtration system, rotary controls for temperature, 7-speed fan and airflow direction	○ <sup>5</sup>	●	●

### SECURITY

Keyless entry system with answer-back electronic chirp	●	●	●
Antitheft security system with answer-back electronic chirp (and glass shock sensor on 2.5X L.L.Bean Edition)	●	●	●
Engine immobilizer	–	–	●

### SAFETY

ACTIVE			
Subaru Symmetrical All-Wheel Drive (AWD)	●	●	●
SUBARU BOXER engine	●	●	●
4-wheel independent heavy-duty raised suspension	●	●	●
4-wheel antilock brakes (ABS) with Electronic Brake-force Distribution (EBD)	●	●	●
Daytime Running Lights (DRL)	●	●	●
PASSIVE			
Dual-stage deployment driver and front-passenger front air bags (SRS) <sup>7</sup>	●	●	●
Front seat-mounted head/chest side-impact air bags (SRS) <sup>7</sup>	●	●	●
Height-adjustable active front-seat head restraints	●	●	●
Three individual height-adjustable rear head restraints	●	●	●
Height-adjustable 3-point front seat belts with pretensioners and force limiters. 3-point rear seat belts at all seating positions.	●	●	●
Rear child-safety door locks	●	●	●
LATCH system: Lower Anchors and Tethers for CHildren	●	●	●
Safety brake pedal system	●	●	●
Energy-absorbing collapsible steering column	●	●	●
Ring-Shaped Reinforcement Frame body structure with hydroformed front subframe structure	●	●	●

### OPTIONAL EQUIPMENT

4-speed adaptive electronic direct-control automatic transmission	○	●	○
2.5X Premium Package:	○	–	–
16 x 6.5" 8-spoke aluminum-alloy wheels, 4-wheel disc brakes, Viscous-type limited-slip rear differential, Panoramic power-sliding glass moonroof with auto-open/close feature, Body-color door handles, Heated larger body-color side mirrors with integrated turn signals, Windshield wipers de-icer, Dual-stage heated front seats, 8-way power adjustable driver's seat with manually adjustable lumbar support, Perforated leather-wrapped steering wheel, shifter and parking-brake handle, Automatic climate control system, Audio system speakers upgrade, In-dash 6-disc CD changer, MP3/WMA player, Auxiliary audio jack for portable media players, SIRIUS Satellite Radio capability <sup>4</sup>			

● Standard ○ Optional – Not available

<sup>1</sup> Subaru has applied the new SAE method for measuring horsepower and torque. <sup>2</sup> Some 2007 Forester 2.5X models with the naturally aspirated 2.5-liter engine distributed for sale in California (and in Maine, Massachusetts, New York and Vermont which have adopted California Specification Emission Control Systems and Warranties and are registered for use in those states) will be specially equipped to meet the California-certified Partial Zero Emission Vehicle (PZEV) credited Super Ultra Low Emission Vehicle (SULEV2) requirements. The manufacturer's PZEV emission control system warranty coverage is for 15 years or 150,000 miles, whichever comes first. For complete warranty information, including coverage and exclusions, see your Subaru dealer. <sup>3</sup> Regular unleaded gasoline with an octane rating of 87 AKI or greater may be used. Using regular unleaded gasoline could result in reduced engine performance. See Owner's Manual for more detailed information. <sup>4</sup> Limited-slip rear differential not available on base Forester 2.5X. <sup>5</sup> Optional as part of 2.5X Premium Package only. See optional equipment listing above. <sup>6</sup> Available as an accessory. Satellite radio hardware and required monthly subscription sold separately. See your dealer. <sup>7</sup> The Supplemental Restraint System (SRS) (air bags) affords the driver and the front passenger additional protection in moderate to severe frontal and side-impact collisions. This system provides supplemental protection only, and seat belts must be worn in order to avoid injuries to out-of-position occupants upon bag deployment and to provide the best combined protection in a serious accident. Children should always be properly restrained in the rear seat.

Some images shown are for illustration purposes only. Specifications in this brochure are based on the latest product information available at the time of publication. For the most up-to-date product information, log on to [www.subaru.com](http://www.subaru.com). Some equipment shown in photography in this brochure is optional at extra cost. Specific options may be available only in combination with other options. Specific combinations of equipment or features may vary from time to time and by geographic area. Certain accessories and equipment may not be available at the time of publication. Subaru of America, Inc., reserves the right to change or discontinue at any time, without notice, prices, colors, materials, equipment, accessories, specifications, models and packages without incurring any obligation to make the same or similar changes on vehicles previously sold. Colors shown may vary due to reproduction and printing processes. This brochure was prepared by Subaru of America, Inc. A warranty from Subaru of America, Inc., is available only on cars sold to the first retail purchaser through an authorized Subaru dealer in the continental U.S. or Alaska. Subaru, SUBARU BOXER, Forester, MOMO and Hill Holder are registered trademarks. HomeLink is a registered trademark of Prince Corporation, a wholly owned subsidiary of Johnson Controls. L.L.Bean is a registered trademark of L.L.Bean, Inc. Alcantara is a registered trademark of Alcantara S.p.A. and Alcantara is produced by Toray Group. SIRIUS is a trademark of Sirius Satellite Radio Inc. iPod is a registered trademark of Apple Computer, Inc. Think. Feel. Drive. is a trademark. For more information, contact your Subaru dealer or log on to [www.subaru.com](http://www.subaru.com).



Redefining peace of mind in three dimensions. | **Think. Feel. Drive.**