

Storage Central SC101T

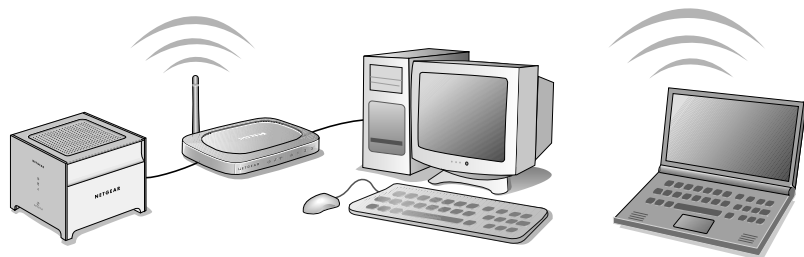
Installation Overview

Estimated Completion Time: 30 minutes.

After you prepare for installation, these instructions will guide you through these three steps:

1. Install a hard disk, and connect the Storage Central SC101T to your network.
2. Install the Storage Central SC101T software.
3. Allocate SC101T disk space for each PC that will use the SC101T.

When you finish the installation, your network will resemble this illustration.



Preparing for Installation

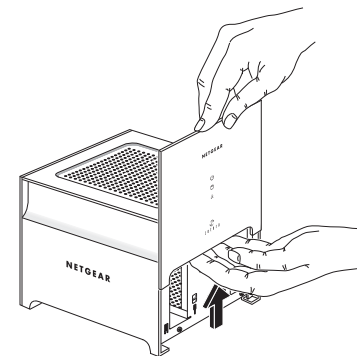
- You must have an SATA hard disk, an Ethernet network with an available port, DHCP *must* be running in the network, and you need to have either Windows XP (SP2) or Windows 2000 (SP4) PCs to access the SC101T.
- Unpack the unit, Ethernet cable, power adapter, and the NETGEAR CD. The CD contains driver software, a setup wizard, and links to online resources. Familiarize yourself with the Storage Central SC101T unit. The back panel of the SC101T has information about the ports and the status lights located on the front panel.
- When you set up the unit, stand it on its feet, and be sure it has ample ventilation. Avoid putting the unit in a location where it could be knocked over easily. Do not place items on top of it.

Install a Disk and Connect the SC101T

Warning: Be sure the SC101T power cord is unplugged before adding or removing the disks. Failure to observe this precaution could render your disks useless.

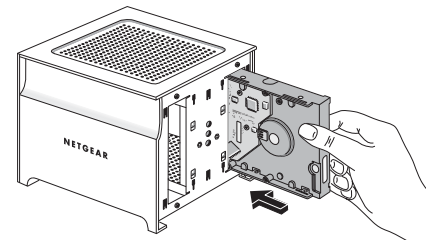
The instructions below explain how to set up a single disk. Repeat these steps to install a second disk.

1. Remove the front cover.



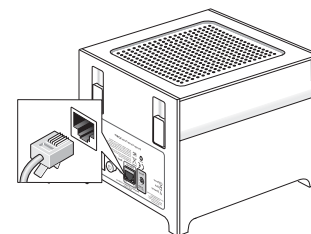
2. Insert a hard disk.

- Position the disk with the bottom facing in.
- Slide the disk into either slot.
- Replace the front cover



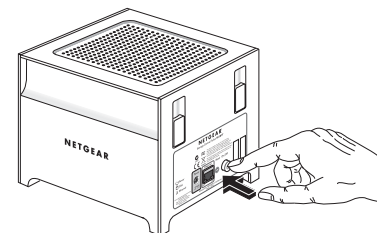
3. Connect the SC101T to your network.

Connect the provided Ethernet cable to your network and to the back of the SC101T. Be sure your network is running. DHCP must be available in the network. DHCP is usually enabled on home networks by default.



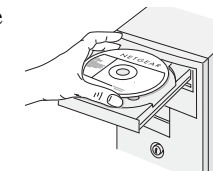
4. Turn on the SC101T

Plug in the power adapter to a power source and connect the other end to the SC101T. Turn the unit on. View the front panel to verify that the green power light is on and that the green network light is on.

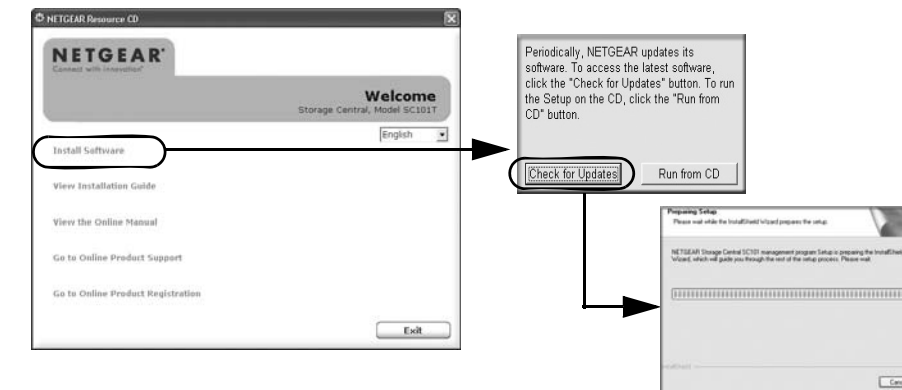


Install the SC101T Software

Note: This software must be installed on each PC that will access the Storage Central Node.



1. Insert the NETGEAR CD into your PC. If this screen does not appear, run Autorun.exe on the CD. Click **Install Software**.



2. Click **Check for Updates** and proceed according to the prompts. The software checks to see if the SC101T is on your network. You can install the software even if the unit is not yet on your network. If Windows logo certification warnings appear, click **Continue** to proceed.

3. Follow the New Hardware Found prompts to complete the installation of several software driver components. You will see the Storage Central Manager utility icon on your desktop.



4. Run the Storage Central Manager, which can check for updates. Click **Next** to proceed, and follow the prompts to check for and install additional product updates.

After the additional product updates process completes, you will see the Storage Central Manager configuration mode selection screen.



Allocate Storage

Note: If you enable sharing, each computer on the network that will share the drive must have the SC101T software installed.

1. Use the Storage Central Manager **Wizard Setup** option. Click **Next** to proceed.
2. Follow the on-screen prompts to allocate storage for this PC, setting the size, name, password, and sharing options.

When the wizard is complete, this PC will now have a new drive available that you will see in the Windows Explorer with the drive letter Windows assigned.

3. Verify that you can copy files to and from you new SC101T drive.
4. Repeat these steps for each PC that will use the SC101T drives.
Refer to the manual for instructions on how to use advanced features such as mirroring.

Note: The SC101T formats hard disks differently than a PC does. Do not swap hard disks between a SC101T and a PC: the data will be unreadable.

Troubleshooting Tips

Here are some tips for correcting simple problems you may have.

Always restart your network in this sequence:

1. Turn off *and* unplug the modem, turn off the router, shut off the SC101T, and shut down the computers.
2. Plug in and turn on the cable or DSL modem. Wait about 2 minutes.
3. Turn on the router. Wait about 1 minute.
4. Turn on the SC101T.
5. Turn on the computers.

Check the status lights to verify correct operation.

When powered on, the SC101T power light will be on. When connected to an operational Ethernet network, the Ethernet status light will be lit. The label on the SC101T back panel identifies these status lights.

Technical Support

Thank you for selecting NETGEAR products. After completing the Smart Wizard configuration assistant, locate the serial number on the bottom label of your product and use it to register your product at <http://www.NETGEAR.com/register>.

Hard Drive Not Included

A hard drive is not included with this NETGEAR product. You are solely responsible for the selection, purchase and installation of your own hard drive. By using this NETGEAR product, you understand and agree that (i) NETGEAR is not warranting your hard drive or its contents; and (ii) NETGEAR is not responsible under any circumstances for any damage to or loss of contents that results from the misuse of any hard drive with the NETGEAR product, regardless of the cause of such damage or loss.

You can register your product on the website or over the phone. The phone numbers for worldwide regional customer support centers are on the Warranty and Support Information card that came with your product.

Go to <http://kbserver.netgear.com> for product updates and Web support.



201-10819-01

August 1, 2006