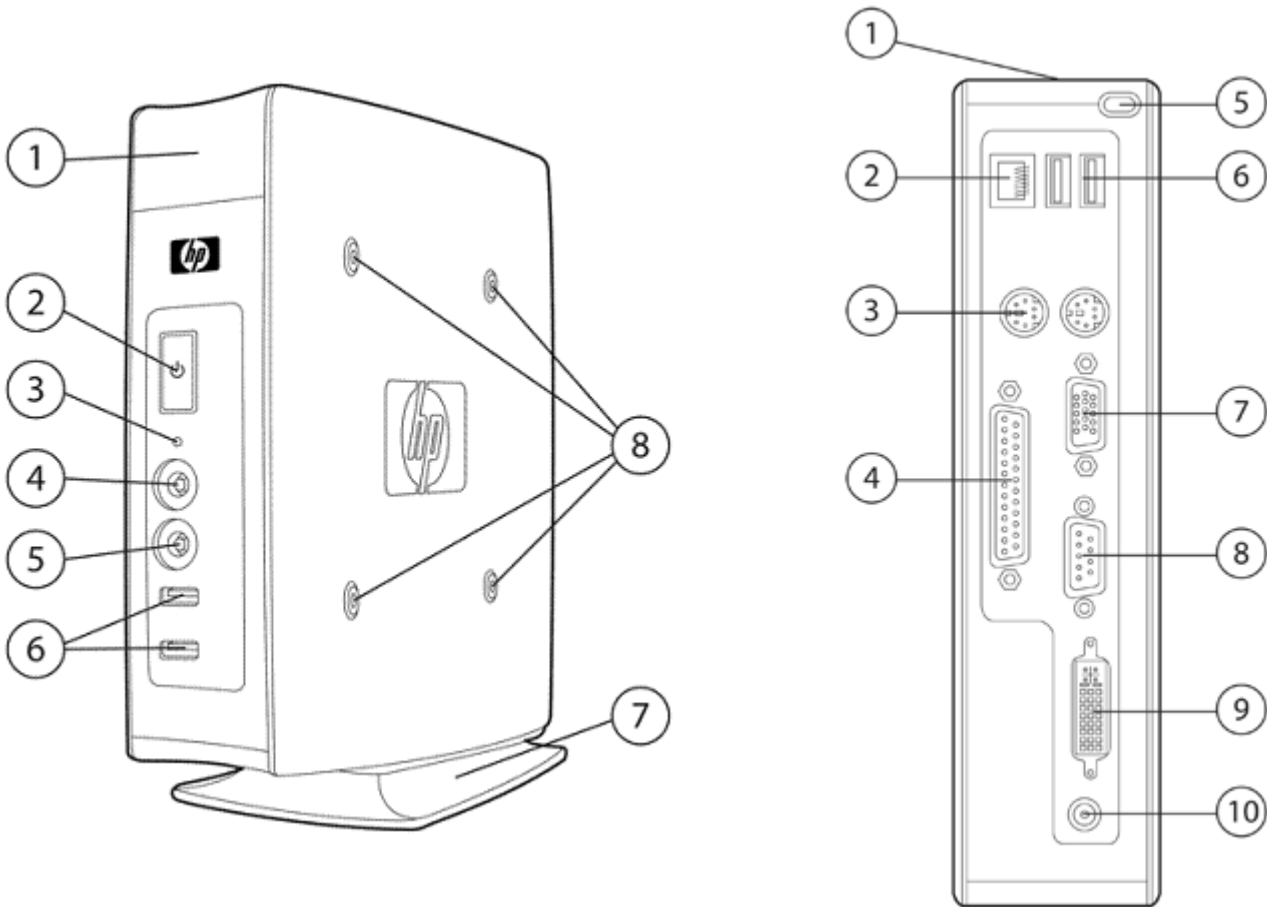


### Overview

### Introduction

The HP t5545 is an all inclusive access device designed for mainstream business. The HP t5545 offers convenient access to Windows or Citrix environments, the most common VDI ecosystems, mainframes, mid-range servers, and Unix/Linux hosts. The ThinPro operating system provides a single console interface with dashboard access to all user and administrative touch points. The t5545 includes dual monitor support, legacy ports, a secure USB compartment, Gigabit Ethernet support and a choice of client side or server based remote management solutions to simplify deployment and maintenance.



Front

1. Secure USB compartment (2 USB connectors)
2. Power button with LED
3. Flash activity indicator
4. Audio connector (mic in)
5. Audio connector (headphone out)
6. USB connectors (2)
7. Vertical stand (removable)
8. VESA mounting points (4)

Back

1. Cable lock slot
2. 10/100/1000 Ethernet RJ-45 connector
3. PS/2 connectors (2)
4. Parallel port
5. Cable management feature
6. USB connectors (2)
7. VGA connector
8. Serial port
9. DVI-D connector
10. +12V DC power input

### Overview

#### At A Glance

- HP ThinPro operating system supports modular software updates that can be applied remotely over the network for rapid deployment
- VIA Eden 1 GHz processor for great performance
- 512 MB System memory (64 MB reserved for video)
- 512 MB Flash memory
- Includes one parallel, one serial, two PS/2, and six USB 2.0 ports (two in back, two in front, and two in secure USB compartment – great for safeguarding USB wireless and Flash devices)
- MIC in and Audio out ports in front
- Built in dual monitor support (VGA and DVI-D native)
- ENERGY STAR® qualified
- Native HP RDP Enhancements provide streaming media and USB redirection through RDP connections
- HP Remote Graphics Software (RGS) support for a business class multimedia experience
- VDI broker support includes VMware View Manager, Citrix XenDesktop (with CDA mode utility), LeoStream, Provision
- Netowkrs HP Session Allocation Manager (SAM)
- HP Device Manager lets you remotely manage client devices from a central location
- HP's alliance with Altiris brings a leading management solution to the thin client market. Altiris Deployment Solution's standards-based, advanced thin client management solution helps reduce the costs of deploying, updating, and maintaining your thin clients. A free client license is included with each HP thin client.
- Exclusive HP ThinState Tools offers in-box, easy-to-use image deployment and recovery tools
- HP Total Care Warranty and Services: limited three-year hardware warranty in most regions. HP Care Pack Services extend service contracts which go beyond your standard warranties. For more details visit: [www.hp.com/go/lookuptool](http://www.hp.com/go/lookuptool).

Models

VN134AA#ABA  VN134AT#ABA (SmartBuy or Promo)	Model Name	HP t5545 Thin Client
	Processor	VIA Eden 1 GHz
	Flash	512 MB
	System Memory	512 MB (64 MB reserved for video)
	Operating System	HP ThinPro
	Keyboard	Keyboard (USB or PS/2) varies by region
	Mouse	Mouse (USB or PS/2) varies by region
	Side Panels	VESA standard mounting holes

### Options

Accessories	<b>NOTE:</b> Options are available as separate purchase <sup>1</sup>	Part Number
	HP Quick Release Kit	EM870AA
	HP Quick Release/VESA Panels Kit (for mounting models that ship with non-VESA panels)	FV248AA
	HP Integrated Work Center Stand	GN783AA
	50 Watt External Power Supply	FJ851AA#ABA
Communications	Belkin USB Wireless 802.11b/g <sup>2,3</sup> (Security: WEP, WPA & WPA2 Only) (North America, Singapore, Hong Kong, Malaysia, Philippines, India, Korea, China, Taiwan, Australia, New Zealand)	Belkin part number: HP4050
	To order, visit <a href="http://www.belkin.com">www.belkin.com</a> , search for HP4050, and order online	
	Belkin USB Wireless 802.11b/g <sup>2,3</sup> (Security: WEP, WPA & WPA2 only) (Germany, Netherlands, Spain, Italy, France, Poland, Hungary, Czech, Russia, Bulgaria, Romania, United Kingdom, Sweden/Scandinavia)	Belkin part number: HP4050ea
	To order, visit <a href="http://www.belkin.com">www.belkin.com</a> , search for HP4050ea, and order online	
	USB 802.11a/b/g Wireless Ethernet Adapter – European Channel Configuration	AK256AA#ABA
	USB 802.11a/b/g Wireless Ethernet Adapter – North American Channel Configuration	AK257AA
Touch Screens	ELO Touch 1529L Flat Panel <sup>2</sup>	E926109
	HP L5006tm LCD Touchscreen (available in selected countries)	RB146AA
Security	HP USB Smartcard Keyboard	ED707AA
	SCM USB Smart Card Reader SCR331 <sup>2</sup>	904622
	HP/Kensington Cable Lock	PC766A
Input Devices	HP PS/2 Standard Keyboard	DT527A#ABA
	HP USB Standard Keyboard	DT528A#ABA
	HP USB Smartcard Keyboard	ED707AA#ABA
	HP PS/2 2-Button Scroll Mouse	DD440B
	HP PS/2 2-Button Optical Scroll Mouse	EY703AA
	HP USB 2-Button Optical Scroll Mouse	DC172B

## Options

**Care Pack Services<sup>4</sup>**      9x5 Next-Business-Day Advanced Exchange – 3 Years  
   9x5 Next-Business-Day On-Site Coverage – 3 Years

<sup>1</sup> The warranties for HP branded products are set forth in the express limited warranty statements accompanying such products. Although third-party products may work effectively on HP thin clients, these third-party products are provided "AS IS." HP does not support or warrant third-party products, including the interoperability of such products with HP thin clients. However, third-party manufacturers and vendors may provide their own warranties and support directly to you. Please contact the manufacturers or vendors for hardware or software support on their products.

<sup>2</sup> This is a third-party product. Product, warranty and support available directly from third-party vendor.

<sup>3</sup> Wireless access point and Internet service sold separately. Roaming not supported. See Administrator's Guide for supported wireless features. Not certified in Korea, Malaysia, New Zealand, Pakistan, or Taiwan.

<sup>4</sup> Service levels and response times for HP Care Pack Services may vary depending on your geographic location. Service starts from date of hardware purchase. Restrictions and limitations apply. HP Care Pack Services extend service contracts beyond the standard warranties. To choose the right level of service for your HP product, use the HP Care Pack Services Lookup Tool at: [www.hp.com/go/lookuptool](http://www.hp.com/go/lookuptool). Additional HP Care Pack Services information by product is available at: [www.hp.com/hps/carepack](http://www.hp.com/hps/carepack).

## Technical Specifications

Processor	VIA Eden 1 GHz	
Chipsets	VIA VX800 north/south bridge unified chip	
Memory	Flash	512 MB
	System Memory	512 MB (64 MB reserved for video)
Graphics	VIAChrome9 HC3 Integrated Graphics Processor	
	Supports high-resolution monitors up to 2048 x 1536 or up to 24 bit color depth	
	<b>NOTE:</b> The resolutions your monitor displays and the multi-display modes (i.e., clone, spanning, extended/independent) supported in ICA, RDP or locally may vary. The graphics controller supports these resolutions:	
	Resolutions	800 x 600, 960 x 600, 1024 x 768, 1152 x 864 1280 x 720, 1280 x 768, 1280 x 800, 1280 x 960, 1280 x 1024 1360 x 768, 1366 x 768, 1368 x 768 1400 x 1050, 1440 x 900 1600 x 1200, 1600 x 1024, 1680 x 1050 1920 x 1080, 1920 x 1200, 1920 x 1440 2048 x 1536
Input/Output/ Peripheral Support	Keyboard	Keyboard (USB or PS/2) varies by region
	Mouse	Mouse (USB or PS/2) varies by region
	Printer	Local and/or network printers (RDP, ICA, LPD)
	Video	VGA-type video output (DB-15) DVI-D digital video output
Audio	Output	Internal amplified speaker, 1/8-inch mini-jack, 24-bit stereo, 192-kHz sample rate
	Input	1/8-inch microphone mini-jack, 20-bit stereo, 96-kHz sample rate
Hardware Security	Security lock slot (cable lock sold separately)	
	Secure USB compartment with 2 USB ports	
Terminal Server Protocols	Citrix ICA	
	RDP	
Networking	10/100/1000 Ethernet (RJ-45)	
	Direct connection via RS-232, Point-to-Point Protocol (PPP), Point-to-Point over Ethernet (PPPoE)	
	VPN connection via MS Point-to-Point Tunneling Protocol (PPTP), Layer-2 Tunneling Protocol (L2TP)	
	DHCP with FTP option for automatic updates	
	TCP/IP with DNS and DHCP support	
	Wake on LAN	
	PXE	
I/O ports and connectors	6 USB 2.0 ports, 1 serial, 1 parallel, 2 PS/2, 1 RJ45, 1 VGA, 1 DVI-D, 1 headphone, 1 microphone	
Resident Operating System	HP ThinPro	
OS Languages	English, French, German, Spanish, Japanese, and Simplified Chinese	

## Technical Specifications

<b>Server OS Compatibility/Support</b>	Citrix Presentation Server (up to 4.5) and XenApp Windows 2000/2003 Server families Windows 2008 Server Windows 2000/2003 Server Terminal Services Windows 2000 Advanced Server, Windows 2000 Advance Server Terminal Services VMware Virtual Desktop Infrastructure using RDP														
<b>Software</b>	<table border="0"> <tr> <td data-bbox="360 449 627 541"><b>Operating System/Protocols/Components</b></td><td data-bbox="642 449 1499 541">HP ThinPro operating system Citrix ICA 11 RDesktop 1.6</td></tr> <tr> <td data-bbox="360 551 627 582"><b>Security</b></td><td data-bbox="642 551 1499 623">Support for Stateless Security Mode (requires setup to enable) and locked file system</td></tr> <tr> <td data-bbox="360 633 627 694"><b>Connection Broker Compatibility/Support</b></td><td data-bbox="642 633 1499 889">Citrix XenDesktop Broker through PNAgent Citrix Desktop Appliance (CDA) mode VMware View Manager 3.0 Leostream Desktop Connection Broker Support for Provision Networks (Quest) broker (contact vendor directly for broker sale and support) HP Session Allocation Manager (SAM) <b>NOTE:</b> Broker features for ThinPro OS may vary from other HP products</td></tr> <tr> <td data-bbox="360 899 627 950"><b>Multimedia and USB redirection</b></td><td data-bbox="642 899 1499 950">HP RDP Enhancements (Multimedia and USB Redirection) HP Remote Graphics Software (RGS)</td></tr> <tr> <td data-bbox="360 960 627 991"><b>Browser and emulation</b></td><td data-bbox="642 960 1499 1195">Iceweasel 3.0.6 Sun JRE 1.6 XDMCP (X.11) TeemTalk 7 Terminal Emulation suite ePDFView (PDF viewer) VNC for remote control ThinPrint .print TCP client (available as add-on)</td></tr> <tr> <td data-bbox="360 1205 627 1236"><b>Management</b></td><td data-bbox="642 1205 1499 1359">HP Device Manager agent Altiris Deployment Solution agent with full client license. Altiris Deployment Solution (management console) available as free download from Altiris at: <a href="http://www.altiris.com/hptc">www.altiris.com/hptc</a> HP ThinState for image capture and redeploy</td></tr> <tr> <td data-bbox="360 1369 627 1400"><b>HP ThinPro add-ons</b></td><td data-bbox="642 1369 1499 1768">           VMware View 3.0 broker support (replaces VDM 2.0 or 2.1)            ICA v10.42 Client with Citrix XenDesktop support (replaces v10.33)            HP ThinPro Service Pack:           <ul style="list-style-type: none"> <li>• VMware View 3.0 broker support (replaces VDM 2.0)</li> <li>• ICA v10.42 Client with Citrix XenDesktop support (replaces v10.33)</li> <li>• Improved Citrix load balancing support</li> <li>• TeemTalk 7.0.2 Terminal Emulation Suite (replaces 7.0)</li> </ul>           HP RDP Enhancements and USB Redirection software             See <a href="http://www.hp.com/support">www.hp.com/support</a> for more detail and the most up to date list of add-ons         </td></tr> </table>	<b>Operating System/Protocols/Components</b>	HP ThinPro operating system Citrix ICA 11 RDesktop 1.6	<b>Security</b>	Support for Stateless Security Mode (requires setup to enable) and locked file system	<b>Connection Broker Compatibility/Support</b>	Citrix XenDesktop Broker through PNAgent Citrix Desktop Appliance (CDA) mode VMware View Manager 3.0 Leostream Desktop Connection Broker Support for Provision Networks (Quest) broker (contact vendor directly for broker sale and support) HP Session Allocation Manager (SAM) <b>NOTE:</b> Broker features for ThinPro OS may vary from other HP products	<b>Multimedia and USB redirection</b>	HP RDP Enhancements (Multimedia and USB Redirection) HP Remote Graphics Software (RGS)	<b>Browser and emulation</b>	Iceweasel 3.0.6 Sun JRE 1.6 XDMCP (X.11) TeemTalk 7 Terminal Emulation suite ePDFView (PDF viewer) VNC for remote control ThinPrint .print TCP client (available as add-on)	<b>Management</b>	HP Device Manager agent Altiris Deployment Solution agent with full client license. Altiris Deployment Solution (management console) available as free download from Altiris at: <a href="http://www.altiris.com/hptc">www.altiris.com/hptc</a> HP ThinState for image capture and redeploy	<b>HP ThinPro add-ons</b>	VMware View 3.0 broker support (replaces VDM 2.0 or 2.1) ICA v10.42 Client with Citrix XenDesktop support (replaces v10.33) HP ThinPro Service Pack: <ul style="list-style-type: none"> <li>• VMware View 3.0 broker support (replaces VDM 2.0)</li> <li>• ICA v10.42 Client with Citrix XenDesktop support (replaces v10.33)</li> <li>• Improved Citrix load balancing support</li> <li>• TeemTalk 7.0.2 Terminal Emulation Suite (replaces 7.0)</li> </ul> HP RDP Enhancements and USB Redirection software  See <a href="http://www.hp.com/support">www.hp.com/support</a> for more detail and the most up to date list of add-ons
<b>Operating System/Protocols/Components</b>	HP ThinPro operating system Citrix ICA 11 RDesktop 1.6														
<b>Security</b>	Support for Stateless Security Mode (requires setup to enable) and locked file system														
<b>Connection Broker Compatibility/Support</b>	Citrix XenDesktop Broker through PNAgent Citrix Desktop Appliance (CDA) mode VMware View Manager 3.0 Leostream Desktop Connection Broker Support for Provision Networks (Quest) broker (contact vendor directly for broker sale and support) HP Session Allocation Manager (SAM) <b>NOTE:</b> Broker features for ThinPro OS may vary from other HP products														
<b>Multimedia and USB redirection</b>	HP RDP Enhancements (Multimedia and USB Redirection) HP Remote Graphics Software (RGS)														
<b>Browser and emulation</b>	Iceweasel 3.0.6 Sun JRE 1.6 XDMCP (X.11) TeemTalk 7 Terminal Emulation suite ePDFView (PDF viewer) VNC for remote control ThinPrint .print TCP client (available as add-on)														
<b>Management</b>	HP Device Manager agent Altiris Deployment Solution agent with full client license. Altiris Deployment Solution (management console) available as free download from Altiris at: <a href="http://www.altiris.com/hptc">www.altiris.com/hptc</a> HP ThinState for image capture and redeploy														
<b>HP ThinPro add-ons</b>	VMware View 3.0 broker support (replaces VDM 2.0 or 2.1) ICA v10.42 Client with Citrix XenDesktop support (replaces v10.33) HP ThinPro Service Pack: <ul style="list-style-type: none"> <li>• VMware View 3.0 broker support (replaces VDM 2.0)</li> <li>• ICA v10.42 Client with Citrix XenDesktop support (replaces v10.33)</li> <li>• Improved Citrix load balancing support</li> <li>• TeemTalk 7.0.2 Terminal Emulation Suite (replaces 7.0)</li> </ul> HP RDP Enhancements and USB Redirection software  See <a href="http://www.hp.com/support">www.hp.com/support</a> for more detail and the most up to date list of add-ons														
<b>Emulations</b>	HP TeemTalk Terminal Emulation 7 supports these emulations. SSH/SSL is supported in terminal emulation mode allowing users to secure their connections to the host.														
	<table border="0"> <tr> <td data-bbox="360 1860 627 1878"><b>Emulation</b></td><td data-bbox="642 1860 1499 1878"><b>Terminal ID</b></td></tr> </table>	<b>Emulation</b>	<b>Terminal ID</b>												
<b>Emulation</b>	<b>Terminal ID</b>														

## Technical Specifications

ADDS Viewpoint A2	ADDS-A2
AIXTerm	aixterm
ANSI BBS	ansi
AT&T AT 386	at386-m
AT&T Dataspeed 4410	att4410
Bull BQ3107	VIP7700, VIP7760
Data General Dasher 410/412	dg410
Hewlett Packard HP700-92/96	2392A, 2622A, 70092, 70094, 70096
Hazeltine 1500	HZ1500
IBM 3151	11, 11-28, 31, 31-28
IBM 3270	3278-2 (24x80 Mono), 3278-3 (32x80 Mono), 3278-4 (43x80 Mono), 3278-5 (27x132 Mono), 3278-2-E (24x80 Color), 3278-3-E (32x80 Color), 3278-4-E (43x80 Color), 3278-5-E (27x132 Color), 3279-2 (24x80 Color), 3279-3 (32x80 Color), 3279-4 (43x80 Color), 3279-5 (27x132 Color), 3287-1 (Printer)
IBM 5250	3179-2 (24x80 Color), 3180-2 (27x132 Mono Msg), 3196-A1 (24x80 Mono), 3477-FC (27x132 Color Msg), 3477-FG (27x132 Mono Msg), 3486-BA (24x80 Mono), 3487-HA (27x132 Mono), 3487-HC (27x132 Color), 3812-1 (Printer), 5251-11 (24x80 Mono), 5291-1 (24x80 Mono), 5292-2 (24x80 Color), 5553-B01 (DBCS Printer), 5555-B01 (DBCS 24x80 Mono), 5555-C01 (DBCS 24x80 Color)
McDonnell Douglas Prism- tty 8, Prism-12	
McDonnell Douglas Prism- tty 9	
Prime PT250	pt250
SCO Console	ansi
Siemens 97801	97801



## Technical Specifications

	Stratus V102	v102
	Tandem TA6526, TA6530	tn6530-8
	Televideo 910	TVI910
	Televideo 920	TVI920
	Televideo 925	TVI925
	Televideo 950	TVI950
	Televideo 955	TVI955
	Unisys T27	UNISYS-TD830
	Viewdata 40	VIEWDATA – 40
	Viewdata 80	VIEWDATA – 80
	Viewdata Split	VIEWDATA – SPLIT
	DEC VT PCTerm	VT-PCTERM
	DEC VT100	m2200, vt100, vt101, vt102, vt125, vt131, vt132, vt220, vt240, vt320, vt340, vt420, vt510, vt520, vt525
	DEC VT100+	VT100+
	DEC VT500 7-bit	m2200, vt100, vt101, vt102, vt125, vt131, vt132, vt220, vt240, vt320, vt340, vt420, vt510, vt520, vt525
	DEC VT500 8-bit	m2200, vt100, vt101, vt102, vt125, vt131, vt132, vt220, vt240, vt320, vt340, vt420, vt510, vt520, vt525
	DEC VT 52	m2200, vt100, vt101, vt102, vt125, vt131, vt132, vt220, vt240, vt320, vt340, vt420, vt510, vt520, vt525
	VT HP220	vt220
	VT UTF8	VT-UTF8
	Wyse WY370	WYSE-370
	Wyse WY50	WYSE-50
	Wyse WY50+	WYSE-50
	Wyse WY60	WYSE-60
	Wyse PCTerm	WYSE-PCTERM
Dimensions H x W x D	Without stand	8.25 x 2.05 x 8.5 in (209.55 x 52.07 x 215.90 mm)
	With stand	8.65 x 2.05 x 8.5 in (219.70 x 52.07 x 215.90 mm)
Weight (approximate)	With stand	3.40 lbs (1.54 kg)
Power*	Operating voltage range	100-240 VAC
	Rated line frequency	50-60 Hz
	Power output (max)	50W
	Rated output current (max)	4.16A
	Output voltage	+12V DC
	Power consumption	Average power consumption of this thin client in a typical setup is 14.0 W
	* The actual power consumption at your location could vary and is dependent on many factors including but not limited to software load on the thin client, attached peripherals, and environmental factors.	
	Operating temperature range	50° to 104° F (10° to 40° C)
Environmental		

Technical Specifications

	Non-operating temperature range	-22° to 140° F (-30 to 60° C)
	Humidity (non-condensing)	10% to 90% operating/5% to 95% non-operating
Regulatory Compliances	Product Safety	International: IEC60950-1, 12:2005, with CB Certificate and all National Deviations US and Canada: UL 60950-1 / CAN/CSA 22.2 No. 60950-1-03, 07:2006, Bi-National Standard for ITE Safety in the US and Canada and is published jointly by UL and CSA. Europe: EN 60950-1, 06:2003, Information Technology Equipment
	Ergonomics	The product has been tested and found to comply with all applicable GS ergonomic requirements.
	RF Interference	FCC Class B, CE Mark, VCCI
Warranty	Three-year limited hardware warranty. <b>NOTE:</b> Certain restrictions apply. Consult the HP Customer Support Center for details.	

## Technical Specifications— Environmental Data

**Eco-Label Certifications & Declarations** This product has received or is in the process of being certified to the following approvals and may be labeled with one or more of these marks:

- ENERGY STAR® Category B

**Additional Compliance** This product is in compliance with:

- Restrictions of Hazardous Substances (RoHS) directive - 2002/95/EC.
- Waste Electrical and Electronic Equipment (WEEE) Directive - 2002/96/EC.
- California Proposition 65 (State of California; Safe Drinking Water and Toxic Enforcement Act of 1986).
- Plastics parts weighing over 25 grams used in the product are marked per ISO 11469 and ISO1043.

Energy Consumption	115 VAC	230 VAC	100 VAC
Idle State:	13.90 W	14.32 W	13.70 W
Off Mode:	1.95 W	1.93 W	1.94 W
<b>NOTE:</b> This product is in compliance with US executive order 13221, WOL (wake on LAN) disabled.			
<b>NOTE:</b> The actual power consumption at your location could vary and is dependent on many factors including, but not limited to, software load on the thin client, attached peripherals, and environmental factors.			

Heat Dissipation	Idle State:	47.43 BTU/hr	48.86 BTU/hr	46.75 BTU/hr
	Off Mode:	6.66 BTU/hr	6.57 BTU/hr	6.62 BTU/hr

**NOTE:** Heat dissipation is calculated based on the measured watts, assuming the service level is attained for one hour.

**Batteries** This product complies with ISO standards:

- EU Directive 91/ 157/ EEC
- EU Directive 93/ 86/ EEC
- EU Directive 98/ 101/ EEC

Batteries used in the product do not contain:

- Mercury greater the 5ppm by weight
- Cadmium greater than 10ppm by weight
- Lead greater than 4000ppm by weight.

Battery size: CR2032 (coin cell)

Battery type: Lithium

Recycled material	Product	<ul style="list-style-type: none"> <li>• This product contains 0% recycled materials (by weight).</li> <li>• This product is 98.1% (by weight) recyclable when disposed of properly at end of life.</li> </ul>
	Packaging	<ul style="list-style-type: none"> <li>• The EPE foam packaging material contains at least 5% (by weight) post-consumer recycled content.</li> <li>• The corrugated paper packaging materials contains at least 80% (by weight) post-consumer recycled content.</li> <li>• The packaging for this product is 94% (by weight) recyclable when disposed of properly.</li> </ul>

## Technical Specifications— Environmental Data

### RoHS Compliance

Hewlett-Packard is committed to compliance with all applicable environmental laws and regulations, including the European Union Restriction of Hazardous Substances (RoHS) Directive. HP's goal is to exceed compliance obligations by meeting the requirements of the RoHS Directive on a worldwide basis. From July 1, 2006, RoHS substances will be virtually eliminated (virtually = to levels below legal limits) for all HP electronic products subject to the RoHS Directive, except where it is widely recognized that there is no technically feasible alternative (as indicated by an exemption under the EU RoHS Directive).

### Material Usage

This product does not contain any of the following substances in excess of regulatory limits (refer to the HP General Specification for the Environment at

[www.hp.com/hpinfo/globalcitizenship/environment/supplychain/gen\\_specifications.html](http://www.hp.com/hpinfo/globalcitizenship/environment/supplychain/gen_specifications.html)):

- Asbestos
- Certain Azo Colorants
- Certain Brominated Flame Retardants – may not be used as flame retardants in plastics
- Cadmium
- Chlorinated Hydrocarbons
- Chlorinated Paraffins
- Formaldehyde
- Halogenated Diphenyl Methanes
- Lead carbonates and sulfates
- Lead and Lead compounds
- Mercuric Oxide Batteries
- Nickel – finishes must not be used on the external surface designed to be frequently handled or carried by the user.
- Ozone Depleting Substances
- Polybrominated Biphenyls (PBBs)
- Polybrominated Biphenyl Ethers (PBBEs)
- Polybrominated Biphenyl Oxides (PBBOs)
- Polychlorinated Biphenyl (PCB)
- Polychlorinated Terphenyls (PCT)
- Polyvinyl Chloride (PVC) – except for wires and cables, and certain retail packaging has been voluntarily removed from most applications.
- Radioactive Substances
- Tributyl Tin (TBT), Triphenyl Tin (TPT), Tributyl Tin Oxide (TBTO)

### Packaging

HP follows these guidelines to decrease the environmental impact of product packaging:

- Eliminate the use of heavy metals such as lead, chromium, mercury and cadmium in packaging materials.
- Eliminate the use of ozone-depleting substances (ODS) in packaging materials.
- Design packaging materials for ease of disassembly.
- Maximize the use of post-consumer recycled content materials in packaging materials.
- Use readily recyclable packaging materials such as paper and corrugated materials.
- Reduce size and weight of packages to improve transportation fuel efficiency.
- Plastic packaging materials are marked according to ISO 11469 and DIN 6120 standards.

### End-of-life Management and Recycling

Hewlett-Packard offers end-of-life HP product return and recycling programs in many geographic areas. To recycle your product, please go to: [www.hp.com/recycle](http://www.hp.com/recycle) or contact your nearest HP sales office. Products returned to HP will be recycled, recovered or disposed of in a responsible manner.

The EU WEEE directive (2002/95/EC) requires manufacturers to provide treatment information for each product type for use by treatment facilities. This information (product disassembly instructions) is posted on the Hewlett Packard web site at: [www.hp.com/go/recyclers](http://www.hp.com/go/recyclers). These instructions may be used by recyclers and other WEEE treatment facilities as well as HP OEM customers who integrate and re-sell HP

## Technical Specifications— Environmental Data

### Hewlett-Packard

### Corporate Environmental Information

equipment.

For more information about HP's commitment to the environment:

Global Citizenship Report

[www.hp.com/hpinfo/globalcitizenship/  
gcreport/index.html](http://www.hp.com/hpinfo/globalcitizenship/gcreport/index.html)

Eco-label certifications

[www.hp.com/hpinfo/globalcitizenship/environment/  
productdesign/ecolabels.html](http://www.hp.com/hpinfo/globalcitizenship/environment/productdesign/ecolabels.html)

ISO 14001 certificates:

[www.hp.com/hpinfo/globalcitizenship/environment/  
operations/envmanagement.html](http://www.hp.com/hpinfo/globalcitizenship/environment/operations/envmanagement.html)

---

© Copyright 2009 Hewlett-Packard Development Company, L.P. The information contained herein is subject to change without notice. The only warranties for HP products and services are set forth in the express warranty statements accompanying such products and services. Nothing herein should be construed as constituting an additional warranty. HP shall not be liable for technical or editorial errors or omissions contained herein. Microsoft and Windows are trademarks of the Microsoft group of companies. ENERGY STAR is a U.S. registered mark of the United States Environmental Protection Agency.