

# High-Speed USB2.0 PCI Card

## Introduction

Thanks for purchasing High-Speed USB2.0 PCI Card. With USB (Universal Serial Bus) USB2.0 High-Speed ports, its make you connecting kinds of USB devices and peripheral to your desktop computer instantly and conveniently .

This USB2.0 PCI card allows you attaching 1, 2, 3, or 4 USB devices instantly without rebooting your system. With USB Hot-Swapping and Plug-n-Play function, you don't have to not only power down your system installing hardware but also worry about running out of slots on your motherboard or those confusing IRQ's again.

This USB PCI card supports USB2.0 High-Speed device and backward compatible with USB1.1 Full-Speed device. Welcome to the USB Revolution-Make it simple and easy.

## Features

1. Support 32-bit PCI bus.
2. Fully compliant with USB 2.0 & 1.1 devices.
3. High quality VIA chipset for better performance.
4. Support USB peripheral Plug-n-Play & Hot-Swapping.
5. Support connecting up to 127 USB devices.
6. Data transfer-rate 1.5/12/480 Mbps.
7. Fully supports EHCI and OHCI Compliant standards.
8. Driver free for Microsoft Windows 2000, XP, and 2003.  
MAC 10.3 or later and Linux Kernel 2.5.2 or later.

## System Requirement

1. Pentium or equivalent computer with an available PCI slot.
2. CD-ROM / DVD-ROM required for driver installation.
3. Microsoft Windows 98SE/ME/2000/XP/2003.

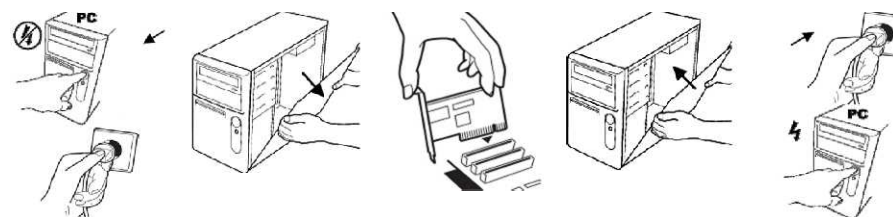
## Package Content

- 1.High-Speed USB2.0 PCI Card x 1
- 2.User's Manual x 1
- 3.CD Driver x 1

## Hardware Installation

Follow the instruction given below to install the USB 2.0 PCI Card

- 1.Turn your computer off
- 2.Remove the power plug from the plug socket.
- 3.Remove the cover from the computer case.
- 4.If fitted. Remove the metal cover plate on the rear of a free PCI slot (White).
- 5.Insert USB 2.0 PCI card into the free PCI slot and screw it firmly on the bracket side.
- 6.Place the cover back onto the computer.
- 7.Insert the plug into the plug socket.



## High-Speed USB2.0 PCI Card

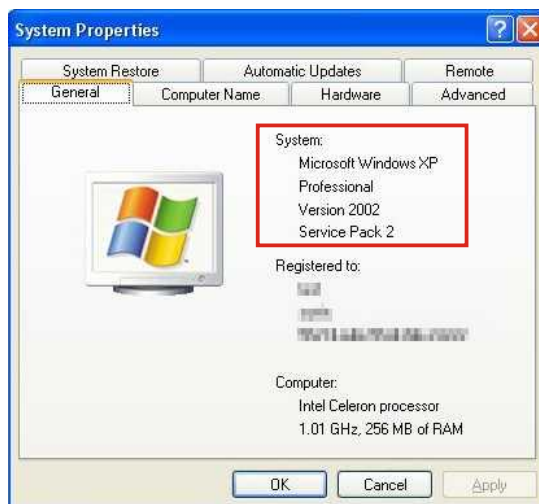
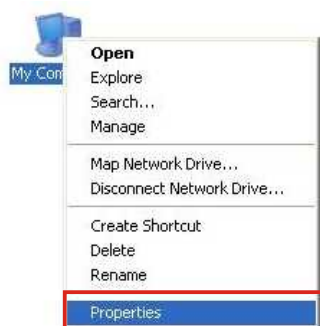
### Driver installation

#### Windows 2000, XP, and 2003:

The system will automatically detect USB 2.0 PCI Card and install driver by itself under Windows 2003, XP, and 2000 operation systems .



 Right click your mouse on "My Computer" and select "Properties" to check your operation system service pack version as below pictures shown. If your operation system is NOT **Microsoft Windows 2000 service pack 4** and **Windows XP service pack 1** or later. Please visit Microsoft web site (<http://www.microsoft.com>) or use update function on your system to upgrade the latest version service pack of operation system. **Otherwise this USB2.0 PCI card just only run USB1.1 data transfer speed.**



#### Windows 98SE and ME:

1. Please make sure this PCI card has been plugged into the PCI slot.
2. System will detect the new hardware, and please ignore it.  
Insert the CD driver into the CD-ROM drive and run the **"Setup.exe"** program located within folder of the Driver CD :

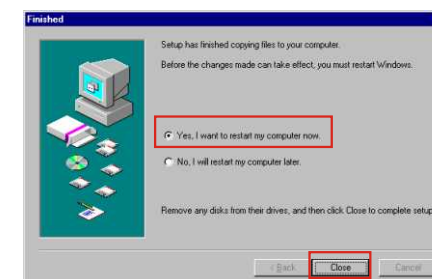
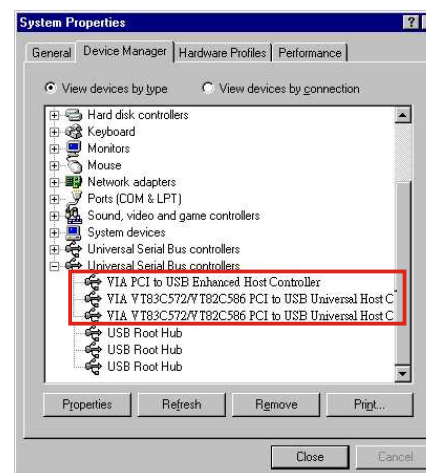
: \USB\USB2.0-VIA\DRIVER\Setup.exe



※When the process of installing USB driver, system would ask your original operation system CD.

3. Then this Setup program will install the driver automatically. After installing driver Successfully, press **"Finish"** to end driver installation procedure and Reboot the system.
4. After restarting , open the Device Manager and check if the devices can work properly.

**Start > Controller Panel > System > Device Manager**



#### Note :

If there is a yellow exclamation mark on **"VIA USB Universal Open Host Controller"**, please remove this item from the Device Manager by clicking the **Uninstall** button and click **Refresh** to re-install this driver again.

Please visit chipset vendor ~ VIA web site (<http://www.via.com.tw>) to get the latest driver.