



Model # ATVUSB05

Quick Installation Guide

Section 1

Getting Started

Please review the following package contents and minimum system requirements before proceeding to install the TV box. If your computer does not meet the minimum system requirements, the TV box may not work properly.

1.1 Package Contents

Unpack your Airlink101 TV box and make sure that all the items are intact. The following items should be included in your package:

- Airlink101 TV box
- Audio Cable
- Composite to S-Video Converter Cable
- Power Adapter
- Quick Installation Guide
- Installation CD
- Remote Control [requires two AAA batteries (not included)]

1.2 Minimum System Requirements

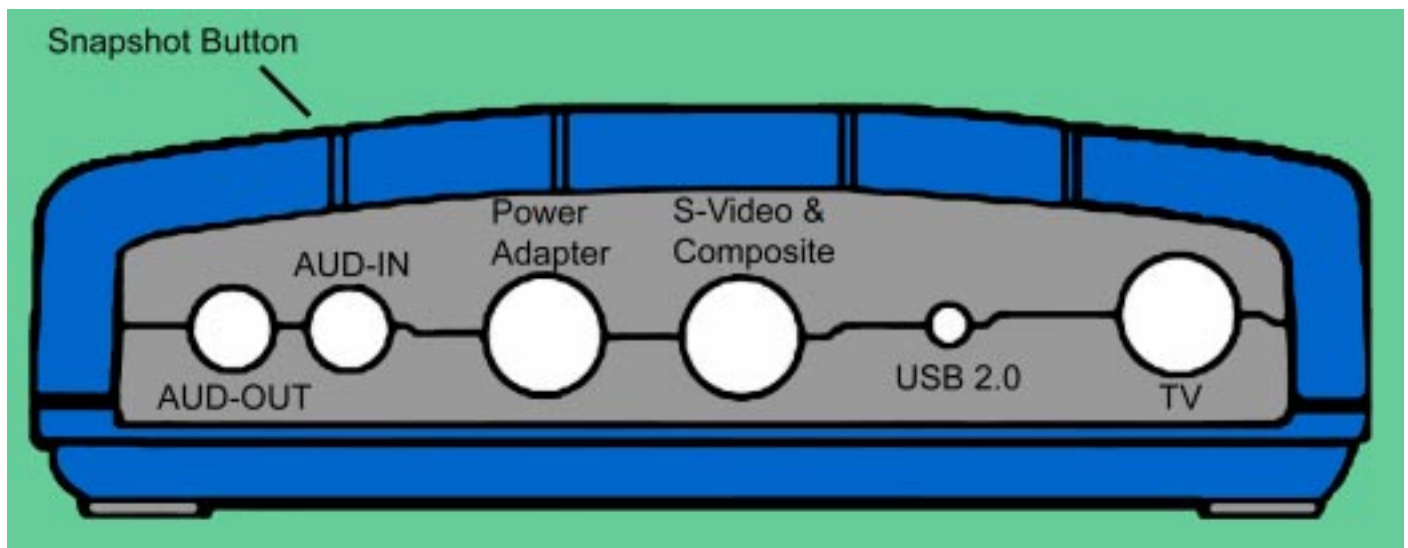
- Intel Pentium 4 2.0GHz or above CPU
- 256 MB RAM
- 200 MB available hard disk space
- One available USB port (USB 2.0 recommended)
- Microsoft Windows 2000/XP
- VGA with 800x600 16-bit resolution (DirectX 9 supported)
- AC 97 compatible sound card
- Speakers for audio output
- CD-ROM drive

Section 2

Installing Hardware

Before you plug the Airlink101 video capture adapter into your computer's USB 2.0 port, please check your USB 2.0 device driver first. If your USB 2.0 host controller driver is not the latest version or provided by Microsoft, we strongly recommend you use our "USB 2.0 Updater" utility from the autorun page on the CD. It will help you to upgrade your USB 2.0 driver to the latest version released by Microsoft in order to avoid some compatibility issues.

Note: Be sure to follow the steps carefully and **plug in the USB 2.0 connector last.**



Step 1 Connect the coaxial cable for the TV antenna/cable to the **TV** port of the TV box.

Step 2 Connect the S-Video cable from your video source to the **S-Video** port of the TV box. If you don't have an S-Video cable, use the provided **Composite to S-Video converter cable**.

Step 3 Connect the audio cable from your audio source to the **AUD-IN** port of the TV box.

Step 4 Connect one end of the provided Audio Cable to the **AUD-OUT** port of the TV box and connect the other end to the **Line In** port of your sound card.

Step 5 Connect one end of the power adapter to the **Power Adapter** port of the TV box and connect the other end to an electrical outlet.

Step 6 Connect the **USB 2.0 connector** from the TV box to an USB 2.0 port on your computer.

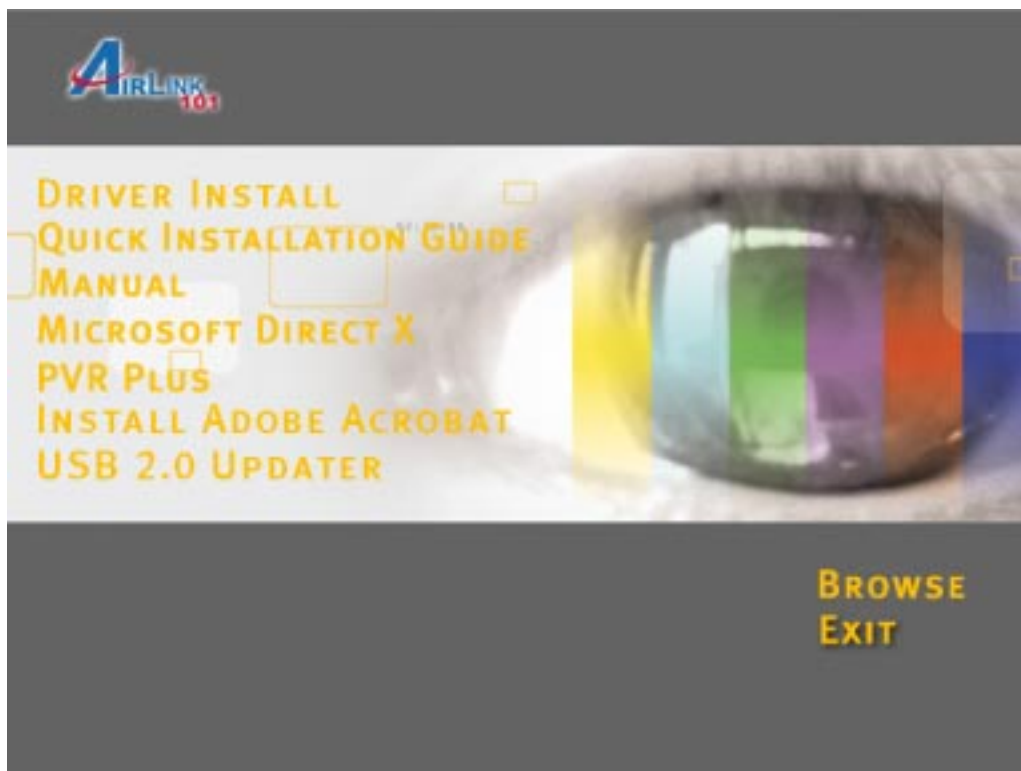
Section 3

Installing TV Box Driver

Before installing the driver, it is highly recommended that all background applications such as antivirus software and system monitoring programs be disabled first.

Step 1 When you plug in the USB 2.0 connector to the USB 2.0 port of your computer, the **Found New Hardware Wizard** will appear. Click **Cancel** to quit the wizard and insert the provided Installation CD.

Step 2 The setup menu will automatically appear. Select **Driver Install** to start the driver installation.

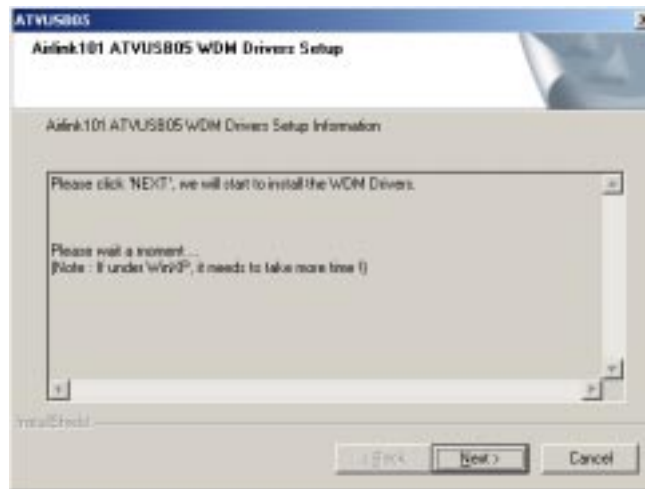


Note: If the setup menu does not appear automatically, go to **Start, Run**, and type `D:\autorun.exe` (where **D** is the letter of your CD-ROM drive) and click **OK**.

Step 3 Click **Next** to install the driver for the Remote Control.



Step 4 Click **Next** to install the driver for the TV box.



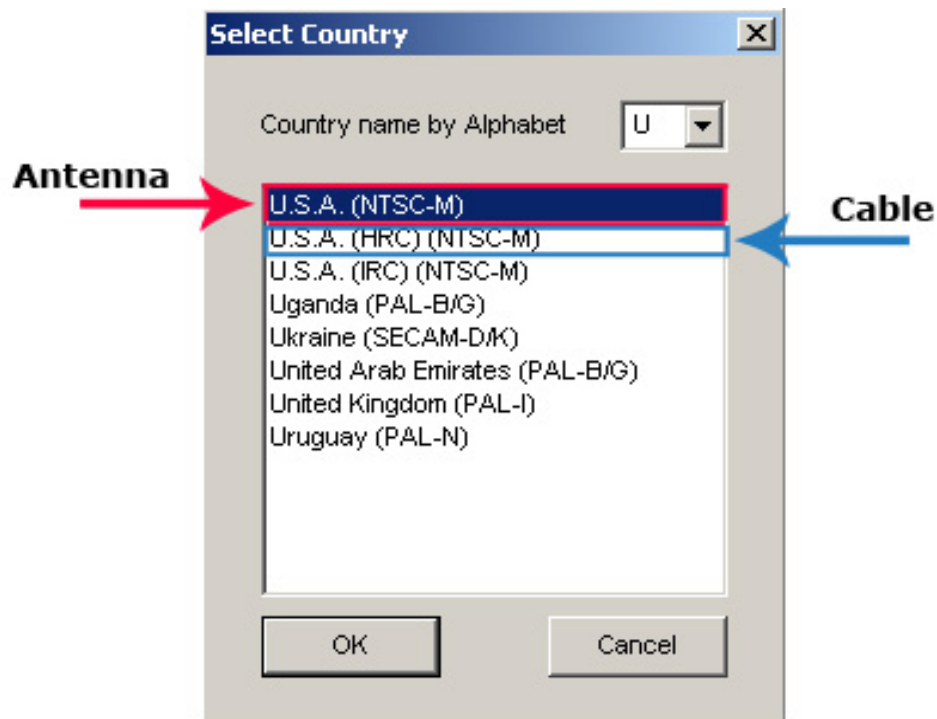
Step 5 Click **Next** to launch the TVSetup utility.



Step 6 Click **Country** to configure the setting.



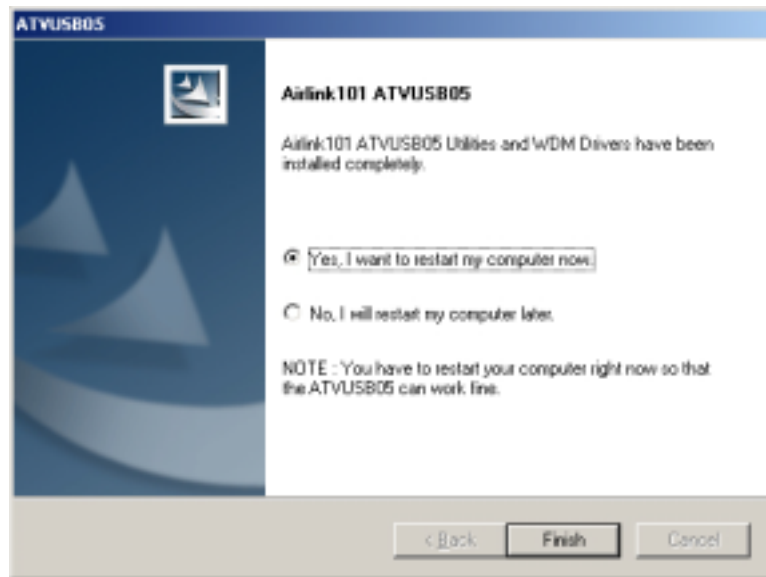
Step 7 For U.S.A., select one of the following



Step 8 Unplug the USB 2.0 connector from your computer, re-plug the connector, and click **OK**.



Step 9 Select **Yes, I want to restart my computer now** and click **Finish** to restart your computer.



Note: If you want to re-configure the TV system, you can run the “**TVSetup**” utility to change the setting. Click **Start, Programs, Airlink101, ATVUSB05 Utilities, TVSetup** to execute the program.

Section 4

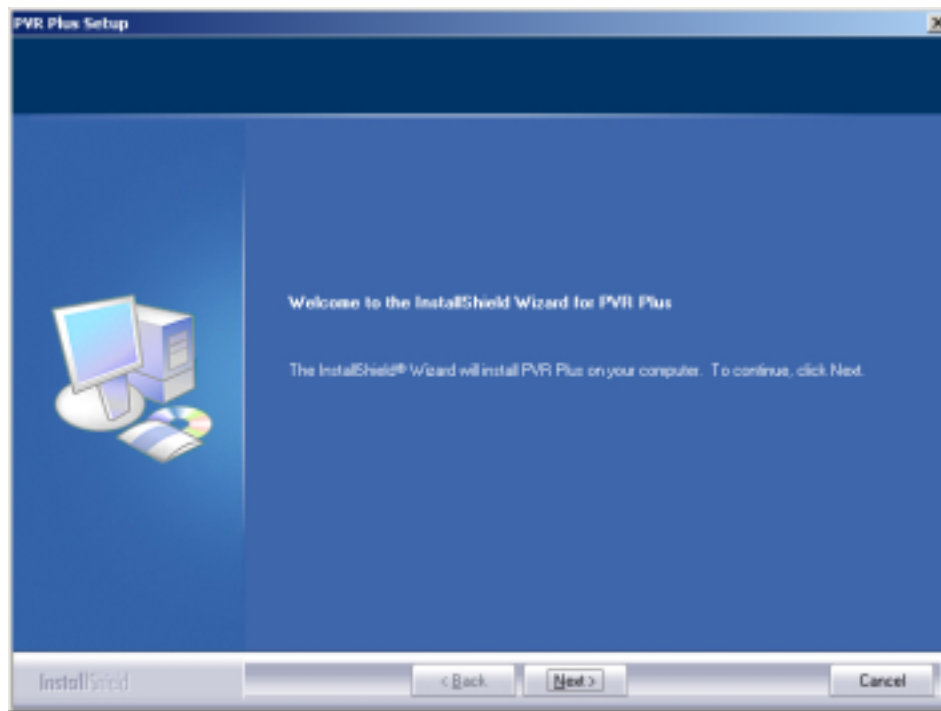
Installing PVR PLUS

PVR PLUS is a set of utilities that allow you to watch TV on your computer, edit video clips, burn DVDs, and more. Before installation, it is highly recommended that all background programs such as antivirus software and system monitoring programs be disabled first.

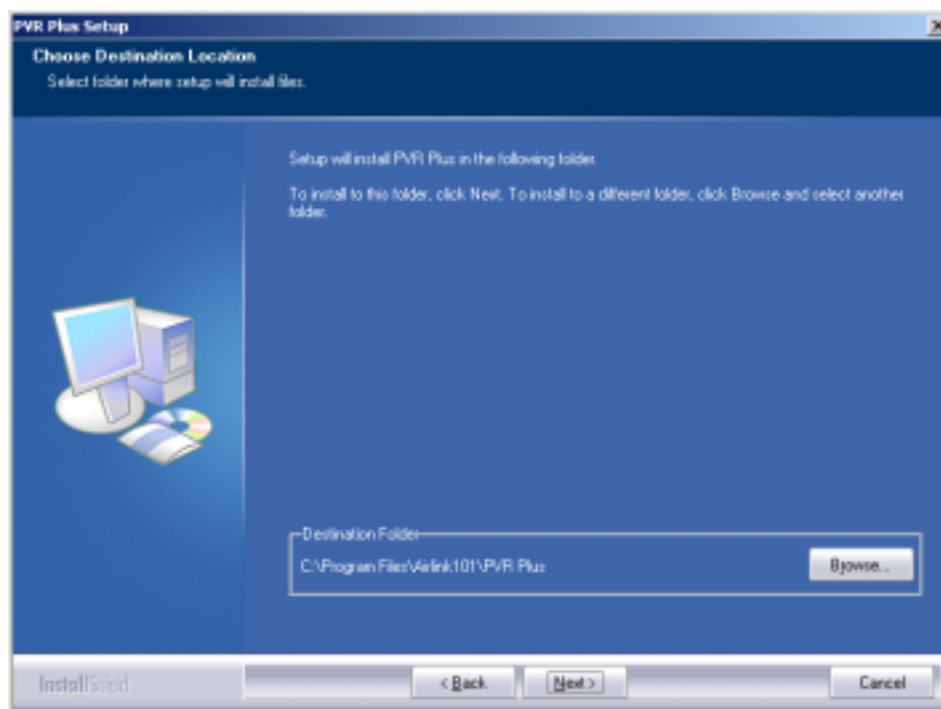
Step 1 Insert the provided Installation CD-ROM.

Step 2 Select **PVR PLUS** at the setup menu. If the setup menu does not appear automatically, go to **Start, Run**, and type `D: \autorun.exe` (where **D** is the letter of your CD-ROM drive) and click **OK**.

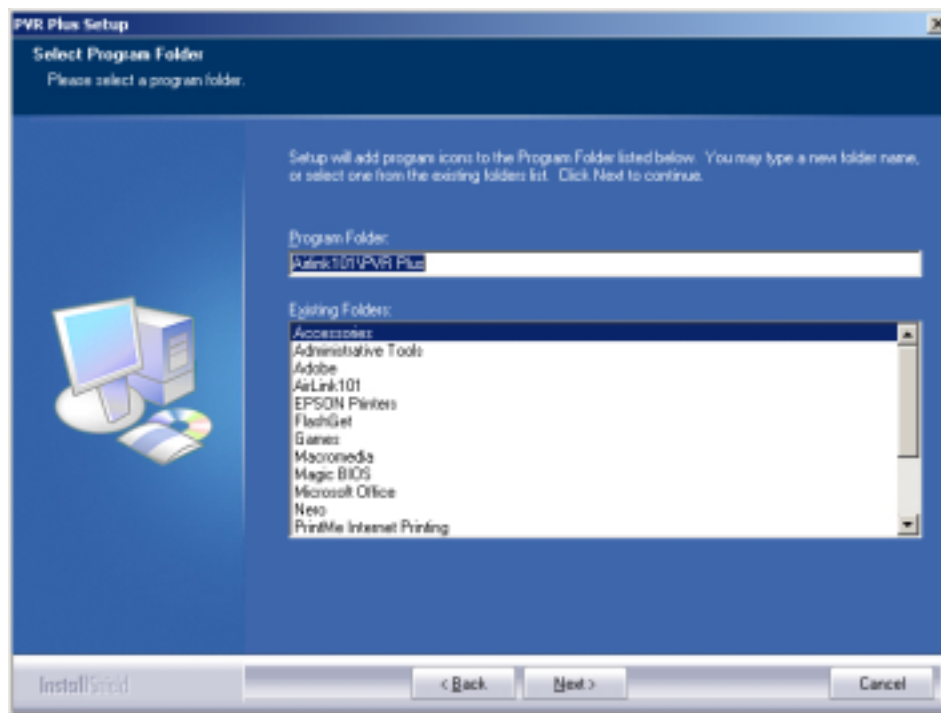
Step 3 Click **Next** to begin installation.



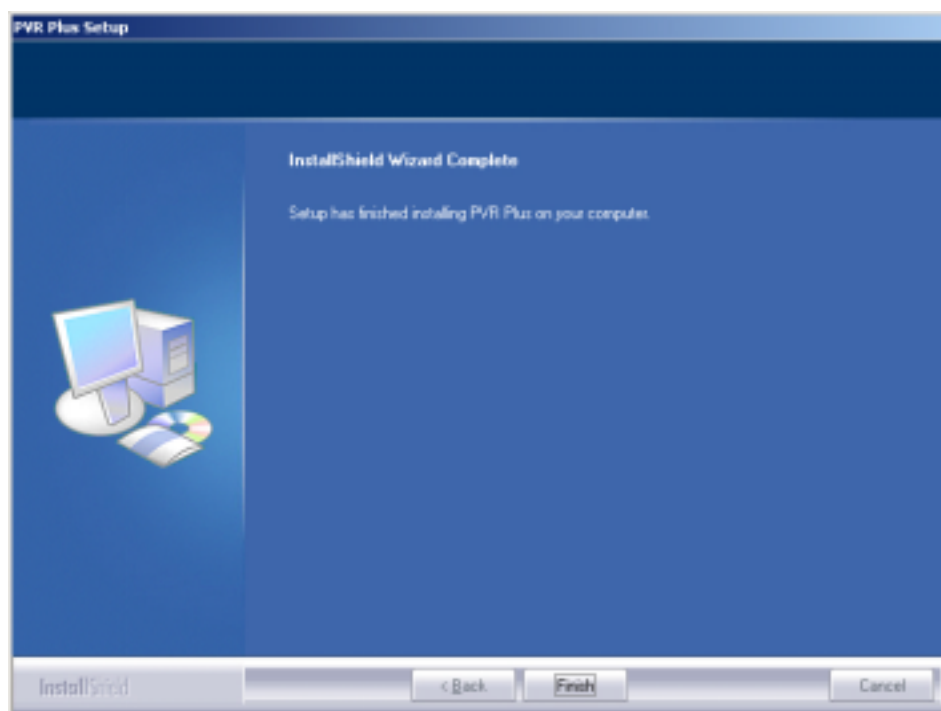
Step 4 Click **Next** to accept the default Destination Location or click **Browse** to choose a new location.



Step 5 Click **Next** to accept the default Program Folder.



Step 6 Click **Finish** to complete the installation.



Section 5

Using PVR PLUS

Double-click the **PVR Plus** icon on your desktop to run PVR PLUS. After you started PVR PLUS, you can select the application you want to use. Click on each icon to start the application.



TVR: TVR turns your PC into a full-featured video recorder.



MPEG Encoder: MPEG Encoder converts DV/AVI files into MPEG/DVD format.



Video Editor: Video Editor allows you to edit MPEG/DVD videos.



DVD Maker: DVD Maker lets you create VCD, SVCD, and DVD that can be played on a PC or DVD player.

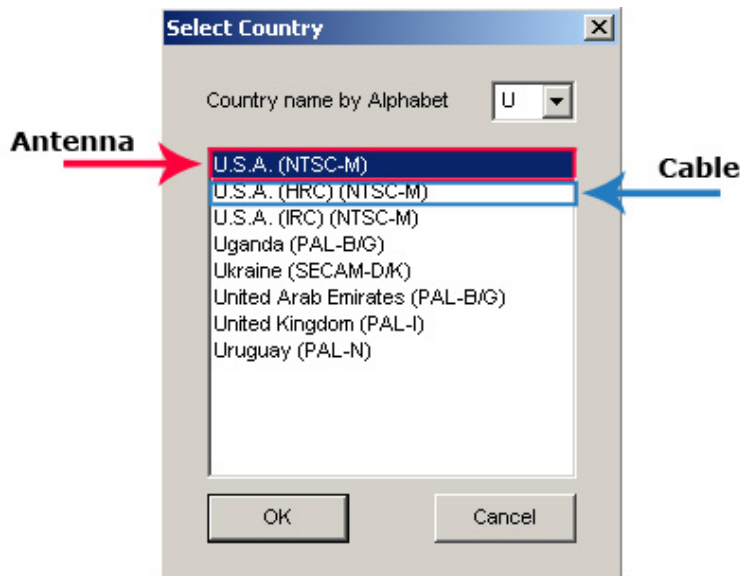
Section 6

Configuring TVR

TVR is a powerful and easy-to-use TV application that provides feature-rich video/audio entertainment. TVR allows you to watch and record TV or video on your computer and playback the recordings as well. Click the TVR icon on the PVR PLUS console to start TVR.

Note: The first time you start TVR, it will run the **TV Frequency Table Setup Wizard**.

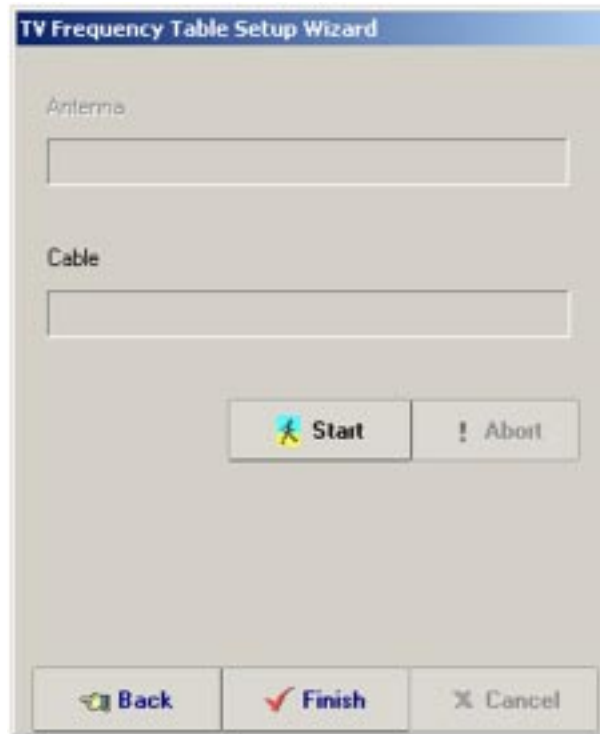
Step 1 For U.S.A., select **Country** and then select one of the following



Step 2 Select the **cable type** and **audio source** for your TV and Recording sound and click **Next**. For example, if you connect the provided audio cable to Line In of your sound card, then you would choose Line In as your audio source.



Step 3 Click **Start** to auto-scan for all available channels.



Step 4 Click **Finish** to complete the **TV Frequency Table Setup Wizard**.



Step 5 Select your **video source** (Antenna, Cable, Composite, S-Video, or Memory) by clicking on the **Input Source Switch**.

Input Source Switch —



Step 6 Click on the numeric keys or the up and down arrows to change your channels.

Congratulations! You have successfully configured the TVR program. You can enjoy watching TV on your computer now. For more detailed information on how to use TVR and other applications, please refer to the User's Manual in the provided Installation CD.

Section 7

Technical Support

E-mail: support@airlink101.com

Toll Free: 1-888-746-3238

Web Site: www.airlink101.com