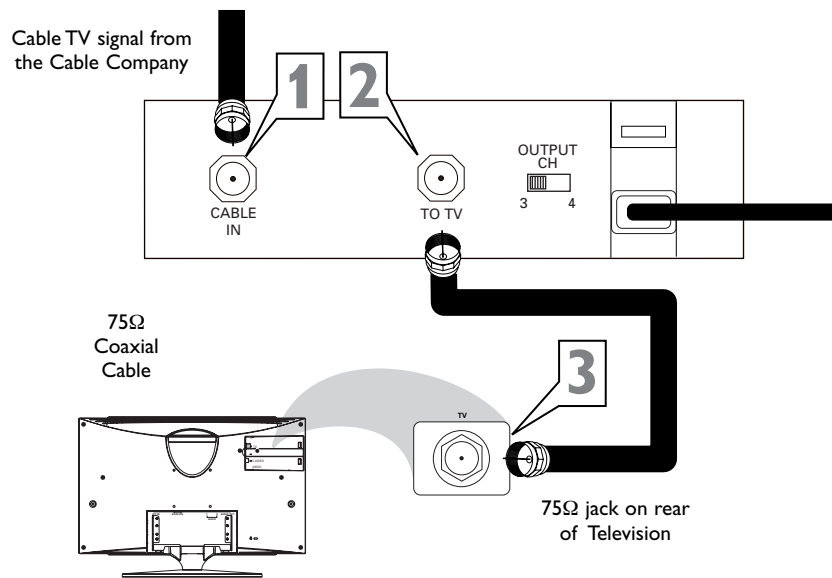


## Quick-Use Guide

There are several ways to connect your new LCD TV Monitor to your other equipment. This Quick-Use Guide shows the easiest most common connection.



### Cable Box with RF In/Out Jacks

This connection will not supply Stereo sound to the LCD TV Monitor. The sound from the Cable Box will be monaural (single-channel, not left and right).

- 1** Connect the Cable TV signal to the IN jack (or RF IN or CABLE IN) on the Cable Box.
- 2** Connect an RF coaxial cable (not supplied) to the OUT jack (or TO TV or RF OUT) of the Cable Box.
- 3** Connect the other end of the coaxial cable to the TV jack on the LCD TV Monitor. Screw it down finger tight.
- 4** Set the Channel 3/4 (or Output channel) switch of the Cable Box to 3 or 4. Set the TV to the same channel. When watching TV programming, change channels at the Cable Box, not the LCD TV Monitor.

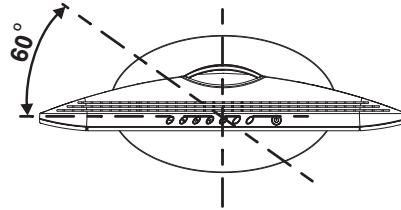
**NOTE: To see how to make other connections, please refer to the Owner's Manual.**

## Quick-Use Guide

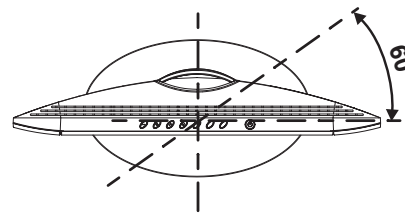
### LCD TV Monitor Swivel

- 1 Press down on the stand and gently adjust the set to a suitable viewing angle.

NOTE: The LCD TV Monitor can only be tilted 20 degrees backward and 5 degrees forward. You can adjust the LCD TV Monitor to the left and right 60 degrees.



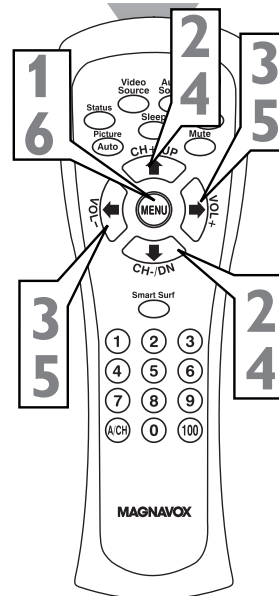
SWIVEL ANGLE-L



SWIVEL ANGLE-R

### Auto Program

- 1 Press the **MENU** button on the remote control to show the onscreen menu.
- 2 Press the **▲(CH UP)** or **▶(CH DN)** buttons to highlight the TV INSTALL menu.
- 3 Press the **▼(VOL-)** or **◆(VOL+)** buttons to enter the TV INSTALL menu.
- 4 Press the **▲(CH UP)** or **▶(CH DN)** buttons to highlight the AUTO PROGRAM control.
- 5 Press the **▼(VOL+)** or **◆(VOL-)** button to start the Auto Program scanning of channels.
- 6 Press the **MENU** button repeatedly to clear the menu from the screen.



EL6568E001