

Aleratec[®]

www.aleratec.com

The Prosumers' Choice

USER GUIDE

**Aleratec 1:15 Blu-ray/DVD/CD
Tower Publisher SLS™**



Part No. 260203

Copyright/Model Identification

The content of this manual is for informational purposes only and is subject to change without notice.

This manual is copyright with all rights reserved. Under copyright laws, this manual and the software described within may not be copied, except in the normal use of the product(s) described within or to make a backup copy.

Copyright© 2011
Aleratec, Inc.
9851 Owensmouth Avenue
Chatsworth, CA 91311 U.S.A.

Aleratec® is a registered trademark, and 1:15 Blu-ray/DVD/CD Tower Publisher SLS™ is a trademark of Aleratec, Inc

Check out Aleratec Online!

- aleratec.com
- facebook.com/Aleratec
- twitter.com/Aleratec
- youtube.com/Aleratec

Please record the following information to help expedite any warranty claim:

Model No. _____ Serial No. _____

Date Purchased _____

Place of Purchase _____

Radio/TV Interference Statement

The equipment described in this guide emits radio frequency energy. If it is not installed in accordance with the manufacturer's instructions, it may cause interference with radio or television reception.

This equipment has been tested and found to comply with the limits for a Class B digital device, pursuant to Part 15 of the FCC Rules. These limits are designed to provide reasonable protection against harmful interference in a residential installation.

This equipment generates, uses, and can radiate radio frequency energy. If not installed and used in accordance with the instruction manual, this equipment may cause harmful interference to radio communications. However, there is no guarantee that interference will not occur in a particular installation. If this equipment does cause harmful interference to radio or television reception, which can be verified by turning the equipment off and on, the user is encouraged to try to correct the interference by one or more of the following measures:

- Reorient or relocate the receiving antenna.
- Increase the separation between the equipment and the receiver.
- Connect the equipment to an electrical outlet on a circuit that is different from the circuit to which the receiver is connected.
- Consult your dealer or an experienced radio/TV technician for help.

This equipment has been certified to comply with the limits for a Class B computing device, pursuant to FCC Rules. In order to maintain compliance with FCC regulations, shielded cables must be used with this equipment. Operation with non-approved equipment or unshielded cables is likely to result in interference to radio and TV reception. The user is cautioned that changes and/or modifications made to this equipment, without the approval of manufacturer, could void the user's authority to operate this equipment.

Safety Regulations

WARNING

To prevent fire or shock hazard, do not expose the unit to rain or moisture.

To avoid electrical shock, do not open the cabinet. Refer servicing to authorized personnel only.

CAUTION

As the laser beam in these 1:15 Blu-ray/DVD/CD Tower Publisher SLS is harmful to the eyes, do not attempt to disassemble the cabinet. Refer servicing to authorized personnel only.

The use of optical instruments with this product will increase eye hazard.

This BD/DVD/CD Duplicator is classified as a CLASS 1 LASER PRODUCT.

The CLASS 1 LASER PRODUCT label is located on top of the internal drive enclosure.

CLASS 1
LASER PRODUCT

LASER KLASSE 1
PRODUKT

Table of Contents

Introduction.....	1
Product Features.....	1
Key Items – 1:15 Blu-ray/DVD/CD Tower Publisher SLS	2
1:15 Blu-ray/DVD/CD Tower Publisher SLS: LCD Front Panel	3
1:15 Blu-ray/DVD/CD Tower Publisher SLS: Removable Hard Disk Drive.....	4
Precautions.....	5
Before you start:.....	5
Overview.....	7
Unpacking the Unit	7
Connect the Cables and Apply Power.....	7
LightScribe Software Installation	8
Using the LightScribe Labeling Software.....	13
Other Label Printing Related Options.....	15
Control Functions.....	16
Stand-Alone Tower Publisher SLS: Tutorials.....	17
Making Disc-to-Disc Copies.....	17
Load Source Files onto the Hard Drive	22
Load Master Disc onto the Hard Drive.....	24
Rename Existing Hard Drive Partition Name.....	28
Delete Existing Hard Drive Partition Permanently.....	30
How to Make Copies from the Hard Drive.....	32
Select Burn Speed.....	37
Select the Source drive.....	39
Change the SETUP Settings	41
Audio CD Editing	42
Introduction to Manage Accounts	50
Manage Accounts: Overview	51
Introduction to Duplication Mode	54
Using AUTOCOPY.....	57
Menu Overview	59
Troubleshooting	66
Recommended Media	70
Technical Support	71
Service and Support.....	73
Technical Support FAX Back Form.....	75



Aleratec[®]

www.aleratec.com

The Prosumers' Choice

Introduction

Thank you for purchasing the 1:15 Blu-ray/DVD/CD Tower Publisher SLS. Please read this User Guide thoroughly before using this product.

Product Features

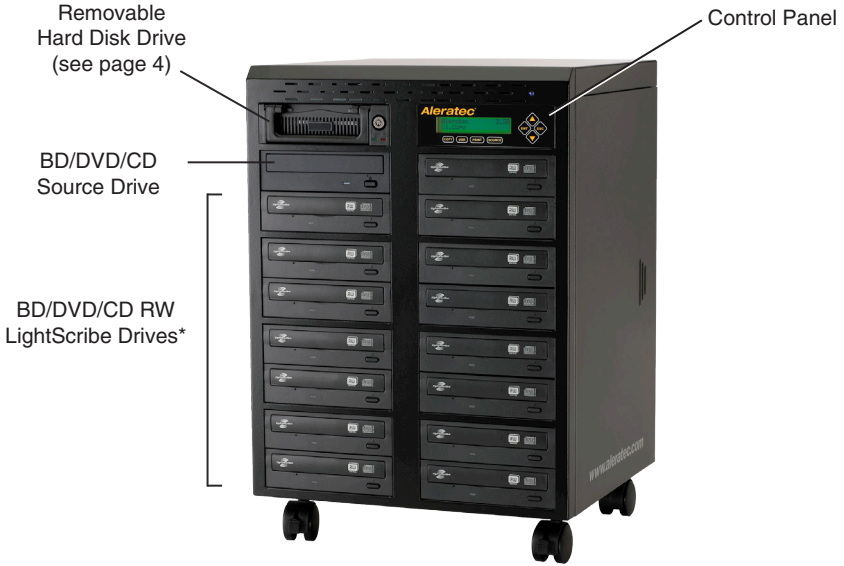
The Aleratec 1:15 Blu-ray/DVD/CD Tower Publisher SLS is a stand alone LightScribe disc publishing system with the capability of simultaneously producing up to 15 BD/DVD/CD copies or clearly labeled discs, and no computer is required.

- Removable Hard Disk Drive to store disc images and label files.*
- Aleratec only USB fast key instantly connects Hard Drive to a PC.
- BD/DVD/CD source drive for fast on the fly copies.
- Laser burns disc labels.*
- Powerful Aleratec Disc Publishing Suite and LightScribe Labeling Software included.

***Note: There is currently no LightScribe Blu-ray media available.**

Introduction

Key Items – 1:15 Blu-ray/DVD/CD Tower Publisher SLS

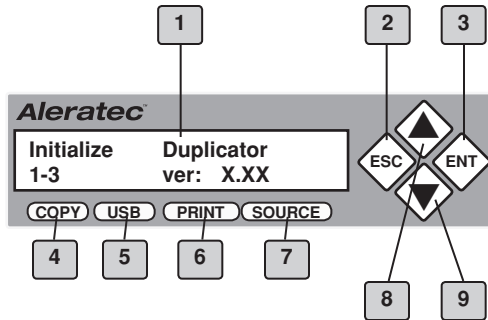


***Note: There is currently no LightScribe Blu-ray media available.**

Introduction

1:15 Blu-ray/DVD/CD Tower Publisher SLS: LCD Front Panel

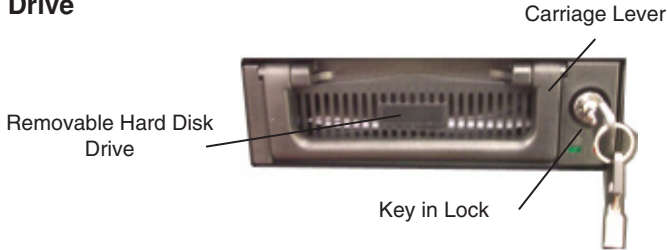
(View may vary from picture)



1. Display shows all functions and messages
2. **ESC** button is used to cancel a selected function
3. **ENT** button is used to execute a selected function
4. **COPY** button will start the "Autocopy" menu function. (See page 59 for more information)
5. **USB** button will take you directly to the USB On/Off mode option. (See page 65 for more information)
6. **PRINT** button will take you directly to the print menu.
7. **SOURCE** button will allow you to change the Source drive that the duplicator uses for loading Master Discs. The default for this option is the BD/DVD/CD source drive. (See page 33 for more information)
8. **UP** arrow is used to scroll up through functions or menus
9. **DOWN** arrow is used to scroll down through functions or menus

Introduction

1:15 Blu-ray/DVD/CD Tower Publisher SLS: Removable Hard Disk Drive



Your Tower Publisher SLS is equipped with a removable hard disk drive (HDD) for storing images of frequently copied discs. Storing an image of a disc you want to copy on an HDD improves duplication speed, and adds the convenience of not having to look around for the actual source disc you want to copy.

Your removable HDD provides extra security, in that you can remove the drive containing the disc images and put it in a safe place where no un-authorized users can copy or view the data.

The removable HDD includes a keyed lock to protect the data on the drive from being misused or stolen. The HDD is used in the copy process as described in the following pages of this user guide.

Note: You can use the duplicator to copy directly from BD, DVDs or CDs with or without the HDD. Just place your source disc in the BD/DVD/CD source drive or any of the BD/DVDRW writers.

To remove the HDD:

1. Unlock the HDD by inserting the key and turning it left (counterclockwise) 1/4 turn. The drive is now in the unlocked position.
2. Lift the HDD carriage lever upward and pull out. The HDD carriage will come out of the tower and a protective drive bay door will close.

To replace the HDD:

1. Align the HDD carriage with the door opening and push the drive carriage through the protective drive bay door until you feel the drive seat in its connector.
2. Push the HDD carriage lever down, then insert your key and turn it 1/4 turn to the right (clockwise). The HDD is now in its locked position. You can remove the key.

Note: The HDD will not work unless it is secured in position with the carriage lever and locked with the key. Do not unlock the HDD during operation, as you will destroy any copies you are making.

Precautions

Before you start:

Before you start using your 1:15 Blu-ray/DVD/CD Tower Publisher SLS, please read the following to ensure proper operation. Good care will help assure maximum product life. Improper operating environment and misuse may void the warranty.

Choose a Good Location:

1. Allow adequate clearance for moving parts.
2. Do not place near heat sources such as radiators or air ducts, or in a place subject to direct sunlight, mechanical vibration or shock.
3. If the duplicator was stored in a location where the temperature dropped below 32°F (0°C) within the past 24 hours, please leave the duplicator in a warm room with temperatures at least 65°F (19°C) for 4 hours prior to powering it on for the first time. Failure to do so may cause irreparable harm and prevent the duplicator from functioning.

Input Voltage Selection:

There is a voltage selection switch on the back of the unit, located directly above where the power cord is connected to. This switch can be set for input power of 115 VAC (the default setting) or 230 VAC. Be sure it is set correctly for the input voltage you will be using.

Operation:

Do not move the duplicator during operation. This may cause it to malfunction during writing operation.

Avoid exposing the duplicator to sudden changes in temperature as condensation may form on the lens inside the duplicator. Should the surrounding temperature suddenly rise while the duplicator is on, wait at least one hour before turning off the power. Operating the duplicator immediately after a sudden increase in temperature may result in a malfunction during playback or writing operation.

Duplicator Limitations:

The duplicator will not copy any BD, DVD or CD disc that have Copy Protection encoded inside. Typically, the movies you purchase or rent from the store will contain copy protection. In addition to the copy protection limitation, the duplicator cannot copy across formats. This means that you cannot copy a DVD master onto a recordable CD. In addition, you cannot copy the same formats if the discs have different maximum capacity limitations. This means that you cannot copy a single layer DVD disc onto a double/dual layer DVD disc or vice versa. The recordable blanks must be the same format and maximum capacity as the Master Disc you intend to duplicate.

Precautions

Before you start - *continued*

External Connection Warning:

In order to operate the duplicator solely as a standalone unit (no connection to the computer), you have to make sure all of the USB connection(s) are off. If by any chance, the USB connection(s) are on, please refer to “Setup Guide: Setup USB 2.0 device(s)”

Maintenance:

It is very important to operate and keep the duplicator in a dust free, clean environment since dust is the number 1 killer for BD/DVD/CD recording devices. Failure to do so may severely damage your duplicator.

Warning: Do not try to use the Air Duster to clean the duplicator while the Reader/Writer Trays are open. In doing so, you may inadvertently blow dust into the recording device and damage the recording device.

Warning: The Stand-Alone Tower Publisher SLS must never be cleaned with a lens cleaning kit!

Proper Shutdown:

To avoid possible system failures, you need to shutdown the duplicator properly. To shutdown the duplicator, you need to press the down arrow (▼) to “18. Shutdown” and follow instructions on the screen to shutdown the duplicator properly. Turning off your duplicator without performing this function will increase the risk of damaging your duplicator.

Transportation

Please keep the original packing materials for future moving or shipping of the 1:15 Blu-ray/DVD/CD Tower Publisher SLS. Shipping the 1:15 Blu-ray/DVD/CD Tower Publisher SLS without proper packaging will void the warranty.

Overview

Unpacking the Unit

Your system was shipped in one box and contains the 1:15 Blu-ray/DVD/CD Tower Publisher SLS and cables.

Carefully open the box and remove the top protective foam padding. Remove the following:

- 1:15 Blu-ray/DVD/CD Tower Publisher SLS
- 2 Power Cords
- 1 USB 2.0 Cable
- 1 Quick Start Guide
- 1 Installation CD

Note: It is important to keep the original shipping container and packaging. In the event you misplace your packaging and need to ship the 1:15 Blu-ray/DVD/CD Tower Publisher SLS, you should first contact technical support to purchase a new shipping container. Shipping the 1:15 Blu-ray/DVD/CD Tower Publisher SLS without proper packaging will void your warranty.

Connect the Cables and Apply Power

Plug the 2 power cords into the power supply of the 1:15 Blu-ray/DVD/CD Tower Publisher SLS, also located on the rear side (make sure the red switch is set at 115 VAC for US operation). Plug into a standard 115 VAC outlet.

Plug the USB 2.0 Cable into the USB connector located on the center rear of the 1:15 Blu-ray/DVD/CD Tower Publisher SLS. Connect the other end of the USB cable into an available USB 2.0 port on your PC.

Note: Use only with a USB 2.0 port. This system cannot be used with USB 1.1, as this will greatly affect system performance. If Windows displays a message that a fast USB device is detected on a slow USB port, then you will need to upgrade your computer by adding a USB 2.0 port.

Overview

LightScribe Software Installation

Minimum System Requirements: PC running Windows 2000, XP, Vista or 7

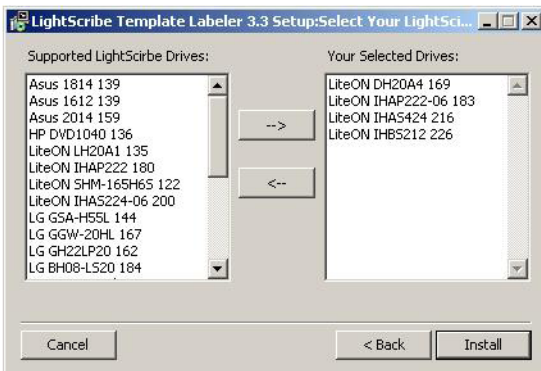
1. Install the Aleratec File System Manager. First write down the key code labeled “Product Key” on the front of the disc and then put the disc into your PC. If Autorun does not begin, go to “My Computer” and explore the CD and double-click “Setup” to begin the installer manually. Follow the prompts and insert the key code that you wrote down where “Serial Number” is displayed and restart your PC when the installer has finished. This manager allows Windows to recognize the hard drive on the 1:15 duplicator.

Note: Your 1:15 Tower Publisher SLS should already have the Hard Disk Drive (HDD) properly formatted. If it is not, while the duplicator is not in USB mode, go to the Hard Drive Setup menu option 11 and press **ENT**, and in the sub-menu choose 7. Format Hard Drive and press **ENT**. **Do not use Windows to format the hard drive. This will result in the 1:15 Tower Publisher SLS being unable to recognize the HDD.**

2. Install the LightScribe Software. Follow the prompts and complete the installation procedure. There will be two programs that will be installed.
 - a. LightScribe System Software
 - b. LightScribe Template Labeler

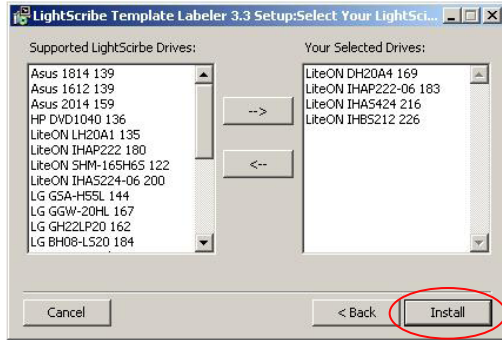
In order to correctly burn LightScribe labels using your Aleratec Tower Publisher SLS you first must correctly configure the LightScribe Template Labeler Software.

During the LightScribe Template Labeler Setup you will be presented with a list of Supported LightScribe Drives and a list of Your Selected Drives.



Overview

- c. Click Install to complete the installation.

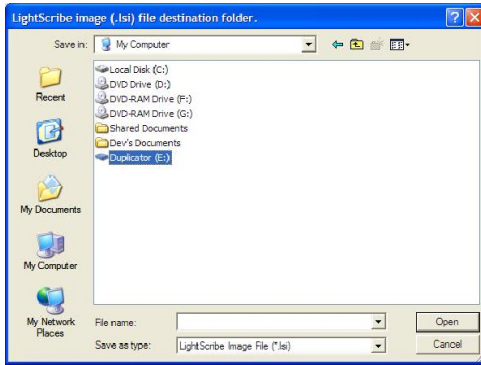


3. Connect the 1:15 to your PC with the USB cable.
4. Make sure the 1:15 is in USB mode. Press the “USB” fastkey on the control panel on the front of the 1:15. If the screensaver is on you may have to press the button twice.
5. You will see the LCD screen display the “USB Connection” menu. Below this title you will see an “On” or “Off” listed. This is the current status of the USB connection. To change the current status, use either the Up or Down arrow keys to select the mode you want. Then, press the ENT key to confirm the selection. You will be prompted to restart the system. For this guide make sure that the USB mode is enabled.

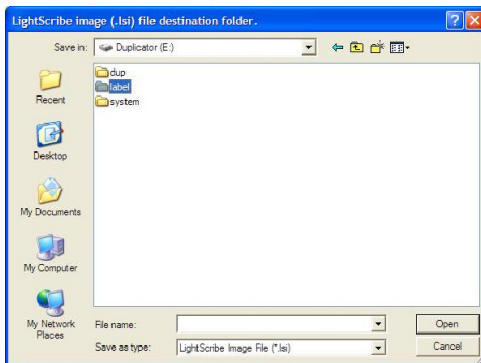
Note: While in USB mode, the duplicator cannot access the hard drive only the PC can.

Overview

- After the 1:15 Tower Publisher SLS has rebooted, go to “My Computer” in Windows and look to see if the HDD is there. It will be labeled as “Duplicator”.



- If you open the drive location you will see three or four folders.
 - The “dup” folder is where “.iso” files, “.nrg” files and folders of data can be put in for disc burning.*
 - The “label” folder is where “.Isi” files created by the LightScribe Template Labeler program will be placed.



* Duplicating from folders on the Duplicator HDD only supports file sizes 4GB and smaller.

Overview

Using the LightScribe Labeling Software

The following procedure demonstrates using the LightScribe Template Labeler to generate the label files (.lsi) used by the Stand-Alone Tower Publisher SLS.

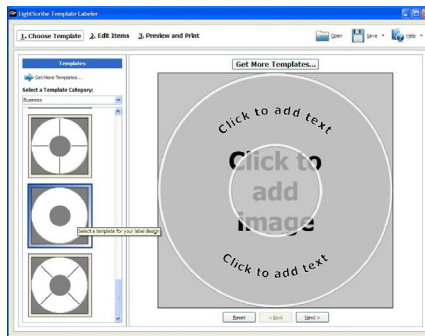
1. Launch the LightScribe Template Labeler.
 - Click the shortcut on your desktop, or go to: Start → All Programs → LightScribe Direct Disc Labeling → LightScribe Template Labeler.



Note: Ignore the “LightScribe Disc Insertion” shown below by pressing the **OK** button.



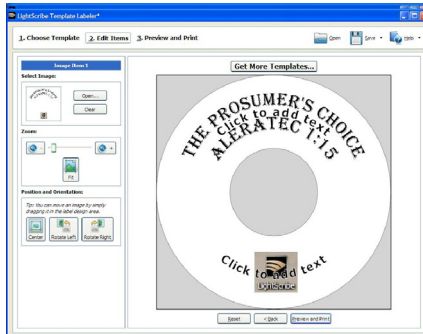
2. Select a Template. You must choose a template before moving to the next step.



Overview

3. Insert Text and/or Pictures into the template. Depending on the template chosen, you may have options to modify text box(es) or picture(s).
 - To insert pictures, click on the dedicated area to select the picture you'd like to use.
 - To insert text, click on the text field, and type the text you'd like use.

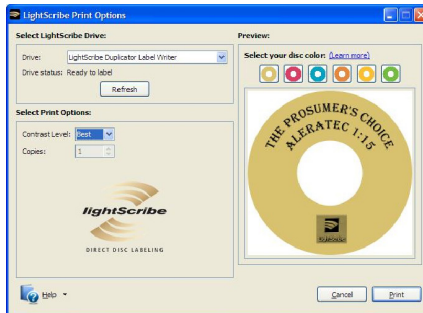
Note: Depending on the template chosen, you may enter multiple lines of text.



4. When you are satisfied with your disc design, click “Preview and Print”.
 - Select the “Best” contrast mode for the darkest print.
 - Select the label surface color you wish to label onto.

Note: The “LightScribe Duplicator Label Writer” must be selected in the drive menu.

- When you are satisfied with the preview, click “Print”.



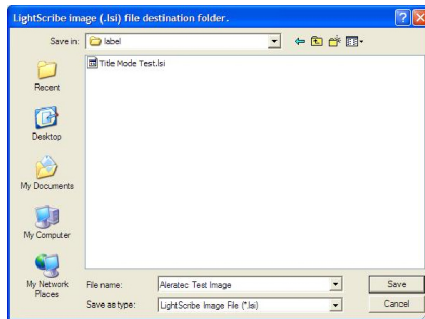
Overview

Using the LightScribe Labeling Software - *continued*

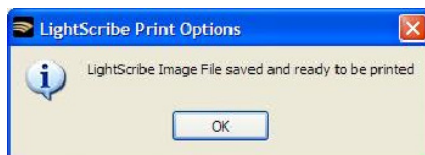
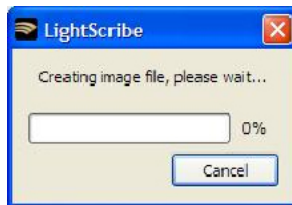
A menu will appear prompting you to save your file. Navigate to the “label” folder located on the “Duplicator” drive. You may copy multiple files into this folder.

Note: The 1:15 Tower Publisher SLS will only recognize label files located in the main **LABEL** folder. Any file that is placed outside of the main **LABEL** folder or in a subfolder will not be recognized as a label.

Create a name for the file and click the “Save” button.



5. The image writing process will begin.



When the image process has completed the file should now be located on the “Duplicator” drive in the label folder.

Overview

6. Press the “USB” button on the duplicator and set the USB mode to “Off”. Reboot the duplicator by turning it off and then on again. After the device has completed the start up process, press the “Print” fast key (also menu option 2) on the main menu of the duplicator and push the **ENT** key.
7. The “Please Select Label” menu will appear. The newly created label file will appear below this prompt within the “label” folder. If there are multiple files, use the **UP** and **DOWN** arrow keys to make your selection. Press the **ENT** key.
8. Next, the “Counter Selection” menu will prompt you to choose the number of copies you want to make. You can select “No Counter” if you prefer to copy continuously, or you can select “Specify Counter” to specify the number of copies (1 to 9999).

Note: See page 27 of this User Guide for instructions on using “No Counter”, and “Specify Counter”.

When you are satisfied with the number press the **ENT** key one more time. This will eject all of the drives.

9. Load the drives with LightScribe discs, label side facing down. Close the drive trays by pressing the drive tray button or lightly pushing the tray to close itself. The printing process will begin automatically after all of the drives have been retracted and the discs have been recognized.
Note: If you would like to manually start printing without waiting for all of the discs to be recognized, or if you selected “No Counter”, wait until the device recognizes at least one disc. The display will prompt you to “Go”. Press the **ENT** button and the printing process will begin.
10. When the disc printing is complete the drives will automatically eject. If you are printing additional discs, reload the trays and close them manually to continue.

Overview

Other Label Printing Related Options

There are other label printing related operations available as described below:

Menu 3: Copy+Print

This function allows you to perform the disc duplication then the disc labeling operation as part of one process. Just flip the disc from the data side to the label side after each duplication pass.

To use this function, the data file required for duplication and the label file required for labeling will need to be preloaded onto the duplicator's internal hard drive.

Menu 12.1: Load Label

This operation allows you to load your existing label file from a disc onto the duplicator's hard drive (HDD).

Menu 12.2: Rename Label

This operation allows you to rename your existing label in the duplicator's hard drive.

Menu 12.3: Delete Label

This operation allows you to delete your existing label in the duplicator's hard drive.

Menu 12.4: Print Surface ID

This operation allows you reveal the ID code of the media's label surface for tech support troubleshooting purposes.

Menu 12.5: Select Loading Drive

This operation allows you to choose the default drive to read the label file(s) on to the duplicator's hard drive when you perform the Load Label operation.

Overview

Control Functions

For detailed descriptions of each control function and feature see the Menu Overview section beginning on page 59 of this User Guide.

Control Functions	
<ol style="list-style-type: none">1. Copy2. Print3. Copy + Print4. Test5. Compare6. Test + Copy7. Copy + Compare8. Select Burn Speed9. Select Source10. Erase11. Hard Drive Setup<ol style="list-style-type: none">1. Select Partition2. Load Partition3. Rename Partition4. Delete Partition5. Partition Info6. Select Loading Drive7. Format Hard Drive12. Print Setup<ol style="list-style-type: none">1. Load Label2. Rename Label3. Delete Label4. Print Surface Info5. Label Info6. Select Loading Drive13. Mix Audio Tracks14. Setup<ol style="list-style-type: none">1. Language2. Auto Start3. Read Error Skip4. CD Writing Mode5. Max Audio6. Buzzer7. Start Up Menu8. Screen Saver9. Duplication Mode10. Counter11. DVD+R High Compatibility12. IRSC13. Disable Drivers14. USB Connection15. Overburn	<ol style="list-style-type: none">15. Utilities<ol style="list-style-type: none">1. Disc Info2. Prescan3. System Info4. Device Info5. Load Default6. Update Firmware7. Save16. Manage Accounts17. Autocopy18. Shutdown

Stand-Alone Tower Publisher SLS: Tutorials

Making Disc-to-Disc Copies

This process copies a Master Disc to several blank discs simultaneously. Due to the nature of simultaneous disc duplication, a good quality Master Disc and lower recording speeds maybe necessary to ensure high success and quality duplications rates.

1. Turn on the duplicator. After the duplicator has booted up, you will see the following display:



2. Make sure the Source Drive is set to the BD/DVD/CD source drive.

It is very important to make sure that your current Source Drive is the BD/DVD/CD source drive in order to avoid unnecessary error messages. To check the Source Drive, do the following:

- a. Use **UP** or **DOWN** arrow buttons to navigate to the following screen, or press the "SOURCE" Fast Key:



- b. Press **ENT** to enter Select Source menu and you will see the following:



Make sure it is located at "Drive 1 Port 0.0". If not, press the **UP** or **DOWN** navigation button to search for it. There will be drive model information where XXXXXX is shown above.

- c. Press **ENT** to submit your selection.
3. Go back to the "COPY" menu.
 - a. Use **UP** or **DOWN** arrow button to navigate to the following screen:



Stand-Alone Tower Publisher SLS: Tutorials

4. Start the Copy Process.

- a. Insert your Master Disc and blank discs into their corresponding tray(s) and press the **ENT** button. You will see the following display:



- b. "Duplication Mode" offers three choices:

- Load and Copy
- On the Fly
- Prompt

Press **UP** or **DOWN** arrow button to display your desired mode. Press the **ENT** button to confirm.

- c. "No Counter" can be used when you prefer to copy continuously with no interruption. (It will still count the number of copies, but it will not notify you when to stop.) To select the "No Counter", press **ENT** when you see the above screen. Then skip to step "d" on page 19 of this User Guide.



"Specify Counter" lets you to select the number of copies you want to make. The duplicator will count the number of copies you've made and prompt you when the desired number of copies has been completed.



Press **ENT** button to select. Enter between 1 to 9999 copies.



Enter a 4-digit number to specify the number of copies you want to make. To specify a number less than 4 digits, fill the leading spaces with "0"s (any leading "0" will be skipped). For example, "0234" will give you two hundred and thirty four copies, and "0010" will give you ten copies.

Stand-Alone Tower Publisher SLS: Tutorials

Making Disc-to-Disc Copies - *continued*

Example:

To enter a value of 21 copies, do the following

Make sure the cursor is located at the first position:



- i. Press **DOWN** button consecutively until “0” is displayed.
- ii. Press **ENT** button once to move the cursor to the next position.
- iii. Press **DOWN** button consecutively until “0” is displayed.
- iv. Press **ENT** button once to move the cursor to the next position.
- v. Press **DOWN** button consecutively until “2” is displayed.
- vi. Press **ENT** button once to move the cursor to the next position.
- vii. Press **DOWN** button consecutively until “1” is displayed.
- viii. Now, “0021” is displayed, press **ENT** once and the cursor moved to **OK**.
- ix. Then, press **ENT** once to submit your counter value.

Now you will see the following screen:



OR



Stand-Alone Tower Publisher SLS: Tutorials

Note: If either one of the PREVIOUS 2 screens are displayed for more than 2 minutes, please check your Master Disc or blank discs for quality.

- d. Allow 5-10 seconds for the duplicator to detect both your Master Disc and blank discs. After your Master Disc and blank discs have been recognized, you will see the following display:



Note: “X” indicates the number of discs recognized by the Writer Tray. For this example, number of discs could be up to 15.

Note: By default, the “Auto Start” setting is set to “Auto”. For example, if your duplicator has detected 3 blank discs and didn’t detect any additional blank discs within 30 seconds, the duplication will start automatically.

When the number of blank discs inserted matches the number of discs detected press ENT to confirm. You will see the following display:



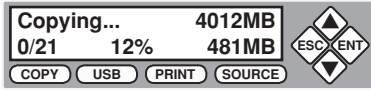
Note: Give the duplicator 10-15 seconds to recognize all the blank discs. If the number of blank discs you inserted doesn’t match the number of discs detected...

Stand-Alone Tower Publisher SLS: Tutorials

Making Disc-to-Disc Copies - *continued*

- e. 2 or 3 seconds after copying begins the following “Copy Progress” screen will appear:

Counter Specified



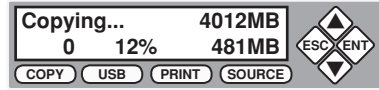
“4012MB” indicates the capacity of the Master Disc.

“481MB” indicates the current progress of the duplication in terms of MB.

“12%” indicates the current progress of the duplication.

“0/21” indicates you have a project size of 21 copies and you have made 0 copies so far.

No Counter



“4012MB” indicates the capacity of the Master Disc.

“481MB” indicates the current progress of the duplication in terms of MB.

“12%” indicates the current progress of the duplication.

“0” indicates that you have made 0 copies so far.

Note: It is normal to see the progress indicator stay at 0-10% and at 100% for approximately 30 seconds during CD duplication. Additionally it is normal to see the progress indicator stay at 0-10% and at 100% for up to 1 minute during DVD duplication. There is a delay caused by the initializing and finalizing stage of disc duplication. Due to this delay, it is normal to see progress indicators stay at 100% for up to several minutes before moving on. Once the disc duplication is completed, successful copies will be ejected and you will see the following display:



“PASS 7” indicates that you’ve just made 7 successful copies.

“FAIL 0” indicates that you have no failure in this run.

“7” indicates that you’ve successfully copied 7 copies so far.

Stand-Alone Tower Publisher SLS: Tutorials

To continue making additional copies, remove the successfully completed copies from the ejected trays and replace with blank discs. To terminate your project and return to the main menu, press **ESC**.

If you've specified a counter value you will see the following display when your project is completed:



If you see above message, you can press **ENT** to go back to main menu.

Note: If you enabled the counter and the number of blank discs you have inserted is greater than the number you requested, you will receive a message indicating you have inserted more discs than what you need. You can continue to copy or you can eject the extras discs.

Note: Failed discs will not be ejected automatically. You will need to manually eject these.

Load Source Files onto the Hard Drive

The number of partitions the hard drive can hold is determined by the capacity of your hard drive and the size of the partitions you created.

For example, if you have an 80GB Hard Drive with a system capacity of 74GB.* You can load 74 CDs or 19 DVDs (given a 4GB average capacity).

*There are many factors that could contribute to the capacity difference between the advertised capacity and the actual capacity:

- Hard Drive Manufacturers use conversion rate of 1GB = 1 Billion Bytes or 1000^3 Bytes. However, most Operating Systems, including our Duplication System use standard conversion rate of 1GB = 1.074 Billion Bytes or 1024^3 Bytes. Therefore, for an advertised 80GB Hard Drive (80 Billion Bytes), the Duplication System capacity is actually 74.5 Billion Bytes (74.5GB).
- In addition, we round off all fractions of a GB to the lower whole number. That means for a hard drive that has a 74.5GB system capacity, we only recognize and utilize 74GB.

Stand-Alone Tower Publisher SLS: Tutorials

Load Source Files onto the Hard Drive - *continued*

You can create a new partition by either loading it directly from a Master Disc or by copying it directly onto the Hard Drive through the tower publisher's USB connection. Here we will discuss loading source data directly onto the Hard Drive. The next section will explain how to load a partition from a Master Disc.

The tower publisher will recognize three different formats of source data:

1. ISO disc image file
2. NRG disc image file
3. Data in the form of directories and files

To load your source data onto the Hard Drive, please do the following:

1. Make sure your unit is connected to a computer via the unit's USB port.
2. Power on the tower publisher and computer.
3. Push the "USB" Fast Key on the tower publisher's controller and you will see the following screen:



4. Use UP or DOWN arrow to select ON and press **ENT**:



5. The Hard Drive should now show up on your computer as "Duplicator"
6. Copy your source data into the "Duplicator/dup" directory

The partition name displayed in the tower publisher will be the name of your ISO or NRG file. For loose directories and files, create a new folder in the "Duplicator/dup" directory and copy your directories and files into it.* The name of this folder will be the partition name for this source data. You will ONLY be able to choose this "root" directory for burning onto a disc. You will not be able to navigate into the folder when selecting a partition to create discs.

* Duplicating from folders on the Duplicator HDD only supports file sizes 4GB and smaller.

Load Master Disc onto the Hard Drive

The following steps will show you how to load your Master Disc into the installed Hard Drive as a partition and copy the stored partition onto blank discs. This process is recommended for mass volume production.

To load your Master Disc onto a hard drive partition, please do the following:

1. Make sure the Source is set to the Hard Drive.

It is very important to make sure the Source is set for the Hard Drive in order to avoid unnecessary error messages. To check what the Source is set to, please do the following:

- a. Use **UP** or **DOWN** arrow button to navigate to the following screen.



- b. Press **ENT** to enter "Select Source" menu and you will see the following:



Make sure it is located at "Hard Drive". If not, press the **UP** or **DOWN** arrow button to search for it. There will be drive model information where XXXXXX is shown above.

- c. Press **ENT** to submit your selection. After your selection has been submitted, you will see the following display:



2. Load your Master Disc onto the Hard Drive.

- a. Use the **UP** or **DOWN** arrow button to navigate to the following screen.



Stand-Alone Tower Publisher SLS: Tutorials

Load Master Disc onto the Hard Drive - *continued*

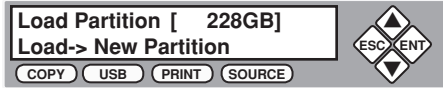
- b. Press **ENT** to enter “Hard Drive Setup” menu and you will see the following display:



- c. Load your Master Disc on to the Hard Drive. To do so, use the **UP** or **DOWN** arrow button to navigate to the following screen.



- d. Press **ENT** to enter “Load Partition” menu and you will see the following display:



The “228GB” indicates the available capacity of your hard drive in term of GB.

Stand-Alone Tower Publisher SLS: Tutorials

- e. You now have the choice to load your Master Disc into a new (empty) partition or overwrite one of the existing partitions (if any exist) by inputting/modifying the name you desire; or you can simply choose “Auto Generate” to have the system automatically generate a partition name for you. Afterwards, simply press the **UP** or **DOWN** arrow button to find your desired selection and press **ENT** to submit your selection. You will see the following (unless you have chosen “Auto Generate”, then please skip to Step “h”):



- f. Name the partition you are about to load into the Hard Drive. To enter the name, use the **UP** or **DOWN** button to select the character and use **ESC** or **ENT** button to move the cursor position and once you've finished move the cursor to **OK** and press **ENT**. For example, if I want to name the partition of your Master Disc as “FUN”, do the following:



Make sure the cursor is located at the first position:

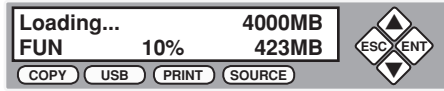
- i. Press **DOWN** button consecutively until “F” is displayed.
 - ii. Press **ENT** button once to move the cursor to the next position.
 - iii. Press “**DOWN**” button consecutively until “U” is displayed.
 - iv. Press **ENT** button once to move the cursor to the next position.
 - v. Press “**DOWN**” button consecutively until “N” is displayed.
 - vi. Press **ENT** button once to move the cursor to the next position.
 - vii. With the partition name “FUN” displayed press **ENT** consecutively until the cursor is moved to **OK**.
 - viii. Press **ENT** once to submit your name selection.
- g. You will see the following confirmation screen:



Stand-Alone Tower Publisher SLS: Tutorials

Load Master Disc onto the Hard Drive - *continued*

- h. Press **ENT** button to confirm. Once your Master Disc has been recognized. The loading progress indicator will be displayed and you will see the following:



“4000MB” indicates the total capacity of your Master Disc.

“423MB” indicates the current MB from the Master Disc that has been loaded.

“FUN” indicates the name of the partition the data is being loaded onto.

“10%” indicates the current percentage of the Master Disc that has been loaded.

- i. Once your Master Disc has been loaded completely, you will see the following display:



Press the **ENT** button to go back to the “Hard Drive Setup” menu.

Stand-Alone Tower Publisher SLS: Tutorials

Rename Existing Hard Drive Partition Name

When you load your Master Disc to a hard drive partition, you are asked to give it a name. You can rename it at anytime afterwards (including the Reserved Partition). To rename your existing hard drive partition name, do the following:

1. Use the **UP** or **DOWN** arrow button to navigate to the following screen.



2. Press **ENT** to enter “Hard Drive Setup” menu. You will see the following display:



3. Use the **UP** or **DOWN** arrow button to navigate to the following screen.



4. Press **ENT** to enter the “Rename Partition” menu. You will see the following display:



5. Use the **UP** or **DOWN** arrow button to find the desired partition. Press **ENT** to submit your selection. You will see the following display:



6. Press **ENT** once again to confirm. You will see the following display:



Stand-Alone Tower Publisher SLS: Tutorials

Rename Existing Hard Drive Partition Name - *continued*

7. Rename the partition you've just selected.

To enter a partition name, use the **UP** or **DOWN** button to select the character and use **ESC** or **ENT** button to move the cursor position. When you are finished, move the cursor to **OK** and press **ENT**. For example, if I want to rename the image from "FUN" to "FUN2", do the following:

- a. Move the cursor to the forth position by pressing **ENT** until you reached desired location:



- b. Press **DOWN** button consecutively until "2" is displayed.
- c. With the Image Name changed from "FUN" to "FUN2", press **ENT** consecutively until the cursor is moved to **OK**.
- d. Press **ENT** once to submit your name selection. When you are done you will see the following display:



You will be directed back to "Hard Drive Setup" menu.



Stand-Alone Tower Publisher SLS: Tutorials

Delete Existing Hard Drive Partition Permanently

If for some reason you need to delete your existing hard drive partition permanently, do the following:

1. Use the **UP** or **DOWN** arrow button to navigate to the following screen.



2. Press **ENT** to enter "Hard Drive Setup" menu. You will see the following display:



3. Use the **UP** or **DOWN** arrow button to navigate to the following screen.



4. Press **ENT** to enter the "Delete Partition" menu. You will see the following display:



5. Use the **UP** or **DOWN** arrow button to find the desired partition. Press **ENT** to submit your selection. You will see the following display:



6. Press **ENT** to confirm. You will see the following screen for 2 seconds.



Stand-Alone Tower Publisher SLS: Tutorials

Delete Existing Hard Drive Partition Permanently - *continued*

7. You will be directed back to the “Hard Drive Setup” menu. You will see the following display:



Stand-Alone Tower Publisher SLS: Tutorials

How to Make Copies from the Hard Drive

1. Load a master disc to the HDD if it is not already loaded and make sure Source is set to the Hard Drive.
2. Go back to “COPY” Menu.
 - a. Use **UP** or **DOWN** arrow button to navigate to the following screen.



3. Start the Copy Process.
 - a. Now, please insert your blank discs into the Writer Trays (make sure the Reader Tray is empty) and press **ENT** button to enter the “COPY” menu. You will be asked to choose which hard drive partition to copy from:



- b. Choose the desired partition to copy from and press **ENT** button to submit your selection. Then you will see the following Counter Selection Menu:



- c. The Counter Selection Menu will let you to choose how many copies you want to make for your project. This Counter Selection feature will allow the duplicator to count the number of copies you've made and prompt you when the desired number of copies has been made.

Stand-Alone Tower Publisher SLS: Tutorials

You can select “No Counter” if you prefer to copy continuously with no interruption. (It will still count the number of copies, but it will not notify you when to stop.) To select the “No Counter”, simply press **ENT** button when you see the screen above. Then skip below and continue on to step “d”.

Or, you can select “Specify Counter” to specify the number of copies (1 to 9999) by pressing the **UP** or **DOWN** navigation button to the below screen:



Then please press **ENT** button to submit. You will see the screen below:



To specify the number of copies for your project, you need to enter/input a 4-digit number. If you are planning to specify a number that is less than 4 digits, please fill the leading spaces with “0”s (any leading “0” will be skipped). An example of that 4-digit number could be “0234” (Two hundred and thirty four), or “0010” (ten). Remember, the beginning “0”s are skipped, therefore “0010” means “10”, which is the number 10.

To enter the number, you need to use **UP** or **DOWN** button to select the number for each digit and use **ENT** or **ESC** button to move the cursor position right or left, once you’ve finished, move the cursor to **OK** and press **ENT**. For example, if I want to specify a counter value of 21 (twenty one). The 4-digit value would be “0021”. To input the desired quantity, please do the following:

Make sure the cursor is located at the first position:



- i. Press **DOWN** button consecutively until “0” is displayed.
- ii. Press **ENT** button once to move the cursor to the next position.
- iii. Press **DOWN** button consecutively until “0” is displayed.
- iv. Press **ENT** button once to move the cursor to the next position.
- v. Press **DOWN** button consecutively until “2” is displayed.
- vi. Press **ENT** button once to move the cursor to the next position.

Stand-Alone Tower Publisher SLS: Tutorials

How to Make Copies from the Hard Drive - *continued*

- vii. Press **DOWN** button consecutively until “1” is displayed.
- viii. Now, we have “0021” displayed and then, press **ENT** once and the cursor is now moved to **OK**.
- ix. Then, press **ENT** once to submit your counter value.

Now you will see following screen:



Note: If the ABOVE screen is displayed for more than 2 minutes, please check your Blank Discs for quality.

- d. Please allow 5-10 seconds for the duplicator to detect your Hard Drive partition and Blank Discs as well. After your Hard Drive partition and Blank Discs have been recognized, then you will see the following screen:



The “7” indicates there are 7 discs that were recognized by the recording tray. Actual quantity may be different depending on your machine.

Note: By default, the “Auto Start” setting is set to “Auto”. For example, if your duplicator has detected 3 blank discs and didn’t detect any additional blank discs for 30 seconds, then the duplication will be started automatically.

Note: Once the number of blank discs you inserted matches the number of discs detected on the screen. Then press **ENT** (if you are not using Auto Start or wish to speed up the process) to confirm and the following Processing screen will appear.

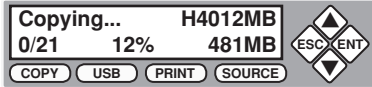


Stand-Alone Tower Publisher SLS: Tutorials

Note: If the number of blank discs you inserted doesn't match the number of discs detected on the screen, please give 10-15 seconds for the duplicator to recognize all of your blank discs.

- e. After 2 or 3 seconds of processing time, the following Copy Progress Screen will appear.

Counter Specified



"4012MB" indicates the capacity of the Master Disc.

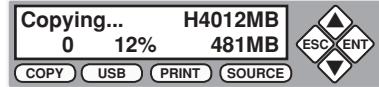
"481MB" indicates the current MB from the Master Disc that has been copied.

"12%" indicates the current progress of the duplication.

"0/21" indicates you have a project size of 21 copies and you have made 0 copies so far.

"H" indicates you are copying from a Hard Drive Image.

No Counter



"4012MB" indicates the capacity of the Master Disc.

"481MB" indicates the current MB from the Master Disc that has been copied.

"12%" indicates the current progress of the duplication.

"0" indicates that you have made 0 copies so far.

"H" indicates you are copying from a Hard Drive Image.

Note: It is normal to see the progress indicator stay at 0-10% and at 100% for approximately 30 seconds during CD duplication. Additionally it is normal to see the progress indicator stay at 0-10% and at 100% for up to 1 minute during DVD duplication. There is a delay caused by the initializing and finalizing stage of disc duplication. Due to this delay, it is normal to see progress indicators stay at 100% for up to several minutes before moving on. Once the disc duplication is completed, successful copies will be ejected and you will see the following display:



"PASS 7" indicates that you've just made 7 successful copies.

"FAIL 0" indicates that you have no failure in this run.

"7" indicates that you've successfully copied 7 copies so far.

Stand-Alone Tower Publisher SLS: Tutorials

How to Make Copies from the Hard Drive - *continued*

Next, refill more blank media to continue making more copies, or you can press **ESC** to terminate your project and go back to the main menu.

If you've specified a counter value for your project and your project is completed, you will see the following screen:



If you see above message, you can press **ENT** to go back to main menu.

Note: If you enabled the counter and the number of discs you have inserted is more than what you requested, you will receive a message regarding you have inserted more discs than what you need. You can continue to copy or you can eject the extras.

Note: Failed discs will not be ejected automatically. You will need to manually eject these. Throw away any failed write-once discs.

Stand-Alone Tower Publisher SLS: Tutorials

Select Burn Speed

This process will allow you to adjust the duplication speed subject to your various needs.

By default, the duplication speed will be set to the optimal speed. However, under some circumstances, you might want to lower the duplication speed. Those circumstances are as follows:

- Poor Blank Media Quality – When your media quality is not good, lowering down the duplication speed is necessary to make good copies.
- Poor Master Disc Quality – If your Master Disc condition is not good, lowering down the duplication speed will reduce the failure rates greatly.
- Duplication Quality – Overall, the lower the speed, the higher the quality of your duplicates. If you have time, it is a good choice to lower down the speed to produce the best quality duplicates.

Turn on your duplicator. After it has finished booting up, you will see the following display.



1. Navigate to the "Speed Selection" menu.

Press **UP** or **DOWN** arrow button to navigate to the following screen.



2. Enter the "Speed Selection" menu.

Press **ENT** button to enter into "Speed Selection" menu. You will see the following display:



Stand-Alone Tower Publisher SLS: Tutorials

Select Burn Speed - *continued*

3. Select duplication speed type.

There are different types of recording speeds:

- HDD/BD to BD: Copying to Blu-ray Media from Pre-loaded BD Partition or Original BD Media.
- HDD/CD to CD: Copying to CD-R/RW Media from Pre-loaded CD Partition or Original CD Media.
- HDD/DVD to DVD: Copying to DVD±R Media from Pre loaded DVD Partition or Original DVD Media.
- HDD/DVD-DL to DVD-DL: Copying to Double/Dual Layer Recordable DVD Media from Pre-loaded DVD-DL Partition or Original Double/Dual Layer DVD Media.

To select the recording speed types, you need to press **UP** or **DOWN** button to adjust and press **ENT** button to submit your selection.

4. Select desired duplication speed.

Once you have submitted the duplication speed type, you will see the following display:



Press **UP** or **DOWN** button to select the desired speed and then press **ENT** to submit your speed selection.

5. Once your selection has been changed successfully, you will see the following screen for 2 seconds.



Then you will be directed back to the main menu:



Stand-Alone Tower Publisher SLS: Tutorials

Select the Source drive

When making a copy, you will need to specify where the master is. Is it in the Source drive? Or is it an Image inside the Hard Drive? This tutorial will show you how to change the Master Reading Source to satisfy your needs.

Basically, there are 3 scenarios that require you to select the Source drive.

1. Disc-to-Disc copy (Copy from 1st Tray) – This is the case when you would normally make copies on the fly. You need to set the “Source drive” as your Master Reading Source.
2. Hard Drive-to-Disc copy – If you want to make copies from your Hard Drive Image, you need to select the source as “Hard Drive”.

There are three benefits to copy from Hard Drive:

- a. Performance – Duplicating from the Hard Drive will be able to boost duplication speeds.
 - b. Stability – Duplicating from Hard Drive will stabilize the duplication process compared to the Disc to Disc duplicating.
 - c. Convenience – With your Master Discs stored inside the Hard Drive, you can have access to each one easily. There is no need to carry your Master Discs; they are all stored inside the duplicator.
3. Disc-to-Disc copy (Copy from 2nd Tray) – This is the case when your Master Disc is full of scratches. You would need to use the Writer Tray as your Source to make a copy and use the new copy as your new master to make more copies.

When you turn on your duplicator, after it has booted up, you should see the following signifying your duplicator is ready.



- a. Navigate to Source Selection Menu.

Press **UP** or **DOWN** arrow button to navigate to the following screen.



Stand-Alone Tower Publisher SLS: Tutorials

Select the Source drive - *continued*

- b. Enter “Source Selection” menu.
Press **ENT** to enter into “Source Selection” menu.

You will see the following display:



Make sure it is located at “Drive 1 Port 0.0”. If not, press the **UP** or **DOWN** navigation button to search for it. There will be drive model information where XXXXXX is shown above.

- c. Select desired master reading device.
Press the **UP** or **DOWN** button to select the desired master reading source.
Then press **ENT** to submit your Source Selection.
- d. Once your selection has been changed successfully, you will see the following screen for 2 seconds:



Then you will be directed back to the main menu:



Stand-Alone Tower Publisher SLS: Tutorials

Change the SETUP Settings

Most of the internal settings and information are stored inside the “Setup” menu. To explore and modify these settings is simple. In the following example you will be modifying the “Auto Start” setting.

Note: The default “Setup” is set for optimal performance. It is unnecessary to change this setting if you are satisfied with your duplicator performance.

1. Use the **UP** or **DOWN** arrow button to navigate to the following screen.



2. Press **ENT** to enter “Setup” menu. You will see the following display:



3. Use the **UP** or **DOWN** arrow button to navigate to the following screen.



4. Press **ENT** to enter “Auto Start Setting” menu. You will see the following display:



5. Use the **UP** or **DOWN** arrow button to modify the setting to “Full”. Press **ENT** to submit your selection. You will see the following display:



6. To modify more settings, go back to step 3. Otherwise, press **ESC** button to go back to main menu.



Stand-Alone Tower Publisher SLS: Tutorials

Audio CD Editing

This procedure will guide you in using the “Mix Audio Tracks” feature. This process allows you to combine audio tracks from various CDs into a single customized audio CD.

To use this feature you need a temporary storage location to hold your music before the duplicator can make it an audio CD. The following are temporary storage location choices:

- Hard Drive:

Choosing “Hard Drive” as the temporary storage location, you will be instructed to load your music files onto the Hard Drive. After all of your favorite songs are selected, you will be instructed to copy them onto a blank 80 min. CD-R media.

- Blank CD-R Media:

Choosing “Blank CD-R” as the temporary storage location, you will be instructed to copy your music files onto a blank CD-R you’ve inserted. After you are finished, you will be instructed to finalize the CD-R disc.

1. Turn on the duplicator. After the bootup is complete, you will see the following display:



2. Going to the “Mix Audio Tracks” menu. Press the **UP** or **DOWN** arrow button to navigate to the following screen.



3. If your duplicator does not have a Hard Drive installed, please skip to Step 4. If your duplicator does have a Hard Drive installed, you will see the following display:



Press the **UP** or **DOWN** arrow button to select your temporary storage location. (Hard Drive or Blank CD-R Media)

Stand-Alone Tower Publisher SLS: Tutorials

4. Once you made your selection, you will see the following display:



OR



When you see the above display, insert an audio CD that contains your music track(s) in the Master Reading Tray and a blank CD-R media into one of Writer Trays.

Note: If either one of the above screens is shown for more than 2 minutes, please check your Master Disc or Blank Discs for quality.

Please allow 5-10 seconds for the duplicator to detect your Master Disc and Blank Discs as well. After your Master Disc and Blank Discs have been recognized, you will see the following display:



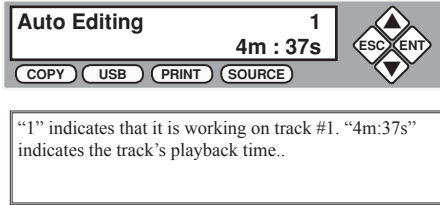
5. Once the previous screen is displayed, press the **UP** or **DOWN** arrow button to display the information on each track of the audio CD. Press **ENT** to select a track to be copied. Once a track is selected, you will see "*" on the left of the track number on the 2nd line. You will also see the total tracks and total playtime you have selected. Once you have finished selecting the tracks to be copy, press the **UP** or **DOWN** arrow button until you see "ARE YOU DONE?". You will see the following display:



Stand-Alone Tower Publisher SLS: Tutorials

Audio CD Editing - *continued*

6. Press **ENT** button to submit your selection. You will see the following display:

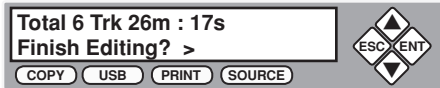


Warning: If the capacity of total audio tracks you have selected is more than your blank CD-R disc’s capacity, you will see the following two screens flashing:



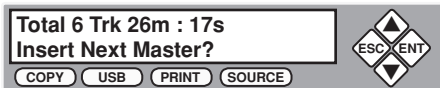
If you see the above messages, press **ENT** button to continue.

Once the Copying process is complete, you will see the following display:



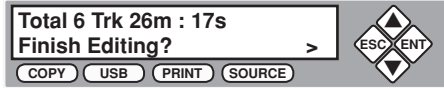
7. You now have the choice to finalize it (mark the completion) or insert another audio CD with additional music files.

If you choose to insert another audio CD with additional music files, press the **DOWN** arrow button until you see the following display:



Stand-Alone Tower Publisher SLS: Tutorials

- Press **ENT** button to continue. Your old Master Disc will be ejected and you can insert another audio CD into the Reading Tray. To continue, go back to Step 3.
- If you choose to finalize it, press the **DOWN** arrow button until you see the following display:



Press the **ENT** button to continue. You will see following confirmation display:



Press the **ENT** button again to confirm the finalization. During the finalization process, you will see following progress indicator:



OR



When the whole process completes, your mixed copy will be ejected and you will see the following display:



You will then be directed back to the main menu:



Stand-Alone Tower Publisher SLS: Tutorials

Audio CD Editing - *continued*

Example of Mixing Audio Tracks to the Hard Drive

In this example we will be creating a new Audio CD from 2 different discs:

- CD1: song 2, and song 4
- CD2: song 3, song 4 and song 5

1. Go to function 13 “Mix Audio Tracks”.



2. Press **ENT** button.

3. Use the **UP** or **DOWN** arrow button to select “Hard Drive”. Press **ENT** button to continue.

4. Insert CD1 into the 1st Drive and a blank CD into the 2nd Drive.

5. Wait until the following screen appears.



6. Use the **UP** or **DOWN** arrow button until you see “Track 2” on the 2nd line of the display. Press **ENT** to confirm. A “*” symbol will appear on the left of “Track 2”. You will see the following display:



7. Use the **UP** or **DOWN** arrow button until you see “Track 4” on the 2nd line, and then press **ENT** to confirm. A “*” symbol will appear on the left of “Track 4” like following:



Stand-Alone Tower Publisher SLS: Tutorials

8. Use the **UP** or **DOWN** arrow button until you see following display:



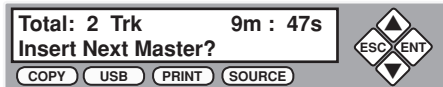
9. Press **ENT** to submit your selection. You will see the following display:



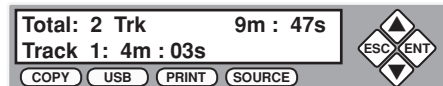
10. Once the loading process is complete, you will see the following display:



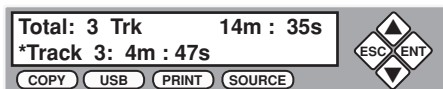
11. To continue with your music selections, press the **DOWN** button once and you will see following display:



12. Press **ENT** button to continue. Insert CD2 into the Reader Tray. When CD2 is recognized you will see the following display.



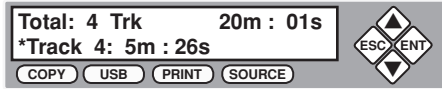
13. Use the **UP** or **DOWN** arrow button until you see “Track 3” on the 2nd line of the display. Press **ENT** to confirm. A “*” symbol will appear on the left of “Track 3”. You will see the following display:



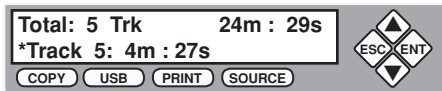
Stand-Alone Tower Publisher SLS: Tutorials

Audio CD Editing - *continued*

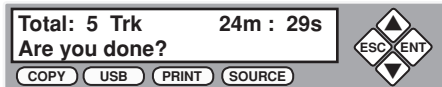
14. Use the **UP** or **DOWN** arrow button until you see “Track 4” on the 2nd line of the display. Press **ENT** to confirm. A “*” symbol will appear on the left of “Track 4”. You will see the following display:



15. Use the **UP** or **DOWN** arrow button until you see “Track 5” on the 2nd line of the display. Press **ENT** to confirm. A “*” symbol will appear on the left of “Track 5”. You will see the following display:



16. Use the **UP** or **DOWN** arrow button until you see following:



17. Press **ENT** to submit your selection. You will see the following display:



18. Once the loading process to the hard drive is complete, you will see following display:



19. When you have finished selecting all of our tracks, press the **ENT** button to finalize. You will see the following display:



Stand-Alone Tower Publisher SLS: Tutorials

20. Press the ENT button again to confirm. You will see the following display:



21. When the process is complete, your mixed copy will be ejected. You will see the following display:



You will then be directed back to the main menu:



Introduction to Manage Accounts

The “Manage Accounts” feature allows the administrator to:

- Create user accounts and passwords to prevent unauthorized use of the duplicator.
- View existing user account lists.
- Edit existing user account information, including name and password.
- Delete existing user account(s).
- Enable/Disable the Manage Accounts feature.

The “Manage Accounts” feature is disabled by default. Prior to activating this feature, the duplicator recognizes all users as the only activated user defined as the administrator. The pre-defined password for this function is “0000”.

With this feature enabled additional users will have their own settings and have access only to the hard drive partitions they have loaded. No one else will have the permission to access these settings/partitions other than the Administrator.

For example, if USER1 logged-in and loaded a Master Disc to the hard drive partition (Partition A), and USER2 logs-in, USER2 will not have access to any partition loaded by USER1, which includes partition A.

To take advantage of this feature, use the following instructions:

1. Change the Administrator password. Please refer to Feature Overview “3. Edit User Info” on page 54 of this User Guide for more information.
2. Create a User Name and Password for every authorized person on this duplicator. Please refer to Feature Overview “2. Create User” on page 54 of this User Guide for more information.
3. Enable the “Manage Accounts” feature by turning on the “Password on Boot UP” setting. Please refer to “Password on Bootup” on page 55 of this User Guide for more information.

Note: This duplicator comes with standard license which allows you to create up to 32 users.

Stand-Alone Tower Publisher SLS: Tutorials

Manage Accounts: Overview

To access the “Manage Accounts” feature, perform the following steps:

1. Turn on the duplicator. After the bootup is complete, you will see the following display:



2. Press the **UP** or **DOWN** button consecutively until you see following:



3. Press **ENT**. You will be asked for the Administrator’s Password.



By default, the Administrator’s Password is “0000”. To enter that, press **UP** or **DOWN** button to select the first digit of your password and press the **ENT** button to submit the current digit. You will be guided to select the next digit. Repeat above steps until you’ve selected all digits of your password. After you have entered the password, press the **ENT** button to submit your password.

4. Once your password is validated, you will be guided to “Manage Accounts”. You will see the following display:



There are five menus in “Manage Accounts”:

- 1 View User
- 2 Create User
- 3 Edit User Info
- 4 Delete User
- 5 Password on Bootup

Stand-Alone Tower Publisher SLS: Tutorials

Manage Accounts Feature Overview - *continued*

View User

This menu allows you to view current existing user accounts.



1. Press the ENT button to enter into this menu. Press the ESC button to go back to the main menu or cancel the current selection.

Note: User "Admin" is the administrative account. It will always be there.

Create User

This menu allows you to create additional user accounts. Each user has their own settings and hard drive partitions. During this process, you will be prompted to enter a new user name and user password for a new account.



1. Press the ENT button to enter into this menu. Press the ESC button to go back to the main menu or cancel the current selection.

Note: User name can consists of maximum 8 alphanumeric letters or numbers.

Note: User password will consist of 4 numbers.

Edit User Info

This menu allows you to change an existing user account's name and password. You will be asked to select an existing user account and then enter a new user name and new user password.



1. Press the ENT button to enter into this menu. Press the ESC button to go back to the main menu or cancel the current selection.

Stand-Alone Tower Publisher SLS: Tutorials

Note: User “Admin” is the administrative account, you can NOT change the user name for this account, but you will be able to change the password for this account.

Note: User name consists of maximum 8 alphanumeric letters or numbers.

Note: User password will consist of 4 numbers.

Delete User

This menu allows you to delete an existing user account. You will be asked to select and existing user account to be removed.



1. Press the ENT button to enter into this menu. Press the ESC button to go back to the main menu or cancel the current selection.

Note: User “Admin” is the administrative account; you can NOT delete this account.

Password on Bootup

This menu allows you to enable/disable the “Manage Accounts” feature upon boot up. During this process, you will be asked to select ON or OFF (enable/disable).



1. Press ENT button to enter into this menu. Press the ESC button to go back to the main menu or cancel the current selection.

Introduction to Duplication Mode

This feature reduces the “Duplication from Hard Drive” process to a single step.

There are three features under “Duplication mode”:

1. On the Fly
2. Load and Copy
3. Prompt

On the Fly

This mode instructs the duplicator to copy directly from the Master Disc. The duplicator performs simultaneous read and write operations without any delays.

Advantage:

- Ideal for small quantity quick duplication.

Disadvantage:

- Requires a Master Disc for each and every run. (Could be harmful for the Master Disc.)
- Maximum DVD duplication speed is typically limited under 8x.
- Requires the Master Disc to be in excellent condition for error free duplication.

Load and Copy

This mode instructs the duplicator to load your Master Disc into the built-in hard drive partition called “Reserved” and make the requested quantity of copies directly from the hard drive. The content will remain stored in the “Reserved” partition, available for future duplications of the same project until you perform this function again with a new master or manually rename or delete the content from Hard Drive Setup. Once a new master is used for Load and Copy, the “Reserved” partition will be overridden or one will be created if it didn’t exist.

Advantage:

- Faster duplication in a long run. (Un-Restricted DVD Duplication speed supported by the duplication blank media.)
- Stable duplication.
- Reliable duplication.

Prompt

If you set to “Prompt”, when you go to 1. Copy, you will be asked if you want to do “Load and Copy” or “on the Fly”. If you set Duplication Mode to “Load and Copy” or “On the Fly”, you will not be prompted when you go to 1. Copy. The duplicator will do what you have selected in Duplication Mode.

Stand-Alone Tower Publisher SLS: Tutorials

Disadvantage:

- The loading time may have an impact on overall duplication time for small duplication jobs.
- The Master Disc will be loaded to the reserve partition in the Hard Drive temporarily until a new master is loaded and overrides the previous image. In comparing this duplication mode with the traditional “Duplication from Hard Drive” process, it offers the user more simplicity. By selecting the “Load and Copy” mode via one simple touch, all the necessary tasks will be automated for you and loaded on to the “Reserved” partition. You can rename the data on the “Reserved” partition and place it in a standard partition if you wish to keep it. (This must be done prior to loading a new master through “Load and Copy”).

By default, the duplication mode is set to “Auto”. This will prompt you to choose between one of the duplication modes when you enter any of the following functions: “Copy”, “Test”, “Test + Copy”, and “Copy + Compare”.

However, if you prefer not to be prompted each time, you can always go to “14. Setup” and select sub-menu 9 and manually reset it. To do so, preform the following steps:

1. Turn on the duplicator. After the bootstrap is complete, you will see the following display:



2. Press the **UP** or **DOWN** button consecutively until you see following display:



3. Press **ENT** button once. You will see the following display:



4. Press the **UP** or **DOWN** button consecutively until you see following display:



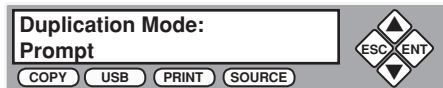
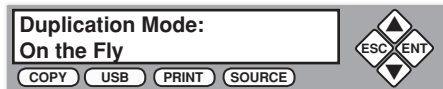
Stand-Alone Tower Publisher SLS: Tutorials

Introduction to Duplication Mode - *continued*

5. Press the **ENT** button once. You will see the following display:



6. Press the **UP** or **DOWN** button consecutively to select your desired mode.



7. Press the **ENT** button once to submit your selection. You will see the following display:



8. Press **ESC** button once to go back to the main menu.

Stand-Alone Tower Publisher SLS: Tutorials

Using AUTOCOPY

The “Autocopy” function allows you to copy from Disc to Disc automatically without pressing any keys. It is the simplest way to make BD/CD/DVD copies. The following tutorial will show you how to use this feature.

1. Use the **UP** or **DOWN** arrow button to navigate to the following screen.



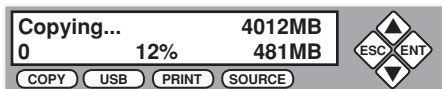
2. Press the **ENT** button to enter the “Autocopy” mode. You will see the following display:



3. Insert your Master Disc into the top Reader Tray and your blank discs into corresponding Writer Trays. Close the trays after you load the discs. (You can automatically close all trays by pressing **ENT** when the display shows “Waiting for Blanks”).
4. Allow 5-10 seconds for the duplicator to detect your Master Disc and Blank Discs. After all the discs are recognized, you will see the following display:



5. After 2 or 3 seconds of processing time, the following Copy Progress Screen will appear.



“4012MB” indicates the capacity of the Master Disc.

“481MB” indicates the current progress of the duplication in terms of MB

“12%” indicates the current progress of the duplication.

“0” indicates that you have made 0 copies so far.

Stand-Alone Tower Publisher SLS: Tutorials

Using AUTOCOPY - *continued*

Note: It is normal to see the progress indicator stay at 0-10% and at 100% for approximately 30 seconds during CD duplication. Additionally it is normal to see the progress indicator stay at 0-10% and at 100% for up to 1 minute during DVD duplication. There is a delay caused by the initializing and finalizing stage of disc duplication. Due to this delay, it is normal to see progress indicators stay at 100% for up to several minutes before moving on. Once the disc duplication is completed, successful copies will be ejected and you will see the following display:



“PASS 7” indicates that you’ve just made 7 successful copies.

“FAIL 0” indicates that you have no failure in this run.

“7” indicates that you’ve successfully copied 7 copies so far.

Next, refill your blank Discs to continue making more copies. If you wish to copy a new Master Disc, remove the old master and load the new Master Disc prior to loading any new blank discs into the Writer Trays.

Note: Failed discs will not be ejected automatically. You will need to manually eject these. Throw away any failed write-once discs.

Menu Overview

Menu Overview

1. Copy

This menu will guide you to make BD/DVD/CD copies. Before you enter this menu to copy, please make sure you have selected the correct Source drive.

2. Print

This menu will guide you to burn LightScribe labels. Before you enter this menu to print, please make sure you have selected the correct Source drive.

3. Copy + Print

This menu will guide you to make BD/DVD/CD copies and burn LightScribe labels. When the BD/DVD/CD copies are finished, flip the discs over in the recorders and the menu will guide you to select a label and initiate the printing function. Before you enter this menu copy and print, please make sure you have selected the correct Source drive.

4. Test

This menu will guide you to make simulation of copying process. During this simulation process, all write once recordable discs such as (BD-R, DVD-R, CD-R) will be reusable. The purpose of performing such simulation is to ensure error free duplication.

***Warning:** Due to the physical limitation of DVD+R/RW, you can not perform this procedure if your recordable discs are DVD+R/RW recordable format. If you do so, you will encounter failure messages.

Warning: If you are using CD-RW/DVD-RW discs as your blanks media during the simulation, all of the content inside those discs will be erased permanently.

5. Compare

This menu will guide you to perform a bit-by-bit comparison between the Master Reading Source and all the copied discs inside the Writer Tray. The purpose of the Compare function is to ensure that all of your copies have exactly same information as your Master Reading Source.

Menu Overview

6. Test + Copy

This menu will guide you to perform a simulation of the copying process. If everything passes the simulation, the copying process will be performed. If there's an error encountered during the simulation, an error message will be displayed and the copying process will not be initiated.

7. Copy + Compare

This menu will guide you to make copies and automatically perform a bit-by-bit comparison between the Master Reading Source and all the copied discs inside the Writer Tray.

8. Select Burn Speed

This menu will guide you to adjust the duplication speed in various duplication modes.

9. Select Source

This menu will guide you to set the Master Reading Source.

10. Erase

This menu will guide you to erase your rewriteable discs in the Writer Tray. There are two options to erase your rewriteable discs:

- a. Full Erase: It will erase the entire disc which will make it impossible to be recovered.
- b. Quick Erase: It will erase the index of the rewriteable disc, not the data section.

11. Hard Drive Setup

This menu will guide you to perform various Hard Drive related operations such as Loading, Renaming, or Deleting your images.

12. Print Setup

This menu has the utilities for setting up a print job and managing labels.

- Load Label
- Rename Label
- Delete Label
- Print Surface Info
- Label Info
- Select Loading Drive

Menu Overview

13. Mix Audio Tracks

This menu will guide you through the “Mix Audio Tracks” feature. This feature helps you combine audio tracks from various CDs into a single customize audio CD.

14. Setup

14.1 Language

This setting allows you to choose which language you prefer to navigate this duplicator. Current supported languages are Spanish, and English.

14.2 Auto Start

This setting allows you to choose Auto, Full or Off.

When full is selected this feature will allow the duplicator to copy automatically once your Master Disc and all of the Writer Trays of the duplicator are filled with recordable media.

When it is Off, the copy process requires you to press **ENT** button to confirm the duplication.

If , for example, your duplicator has detected 3 blank discs on a 4 target or higher duplicator and doesn't detect any additional blank discs for 30 seconds, the duplication will be started automatically.

In order for this feature to take effect, you need to be inside the operation menu such as COPY, TEST, TEST+COPY, COPY+COMPARE, etc.

14.3 Read Error Skip

Normally, when the duplicator encounters a reading error while reading your Master Disc, all the duplication will be aborted and all the recordable media will be ruined. However, if you believe that your Master Disc has a small, insignificant error due to physical damages, you can enable the setting to allow the duplicator to skip any read error* it has encountered.

*This function will not fix the error; it will only skip it to make the rest of the data readable.

Menu Overview

14. Setup - *continued*

14.4 CD Writing Mode

This setting allows you to select which mode you can duplicate a CD with. There are two different modes, “Disc at Once” and “Track at Once”. Unless you understand completely what they mean, we strongly suggest you to set it as “Disc at Once”.

14.5 Max Audio, VCD & CDG Speed

This setting allows you to adjust the maximum duplication speed for Audio and Video CD. Audio CD's and Video CD's do not have internal error checking capability, so duplicating at too high a speed may cause frequent errors.

14.6 Buzzer

This setting allows you to choose whether you want to hear a beep when you press a button or when a task has been completed.

14.7 Startup Menu

This setting allows you to choose which menu you see first when the duplicator is powered on.

14.8 Screen Saver

This setting allows you to enable the Screen Saver feature or not. By enabling this feature, a screen saver will be displayed when your duplicator has been idle for a long period of time.

14.9 Duplication Mode

To simplify the Hard Drive loading and copying process a feature called “Load and Copy”, and “On the Fly” is introduced under the category “Duplication Mode”.

This feature reduces the “Duplication from Hard Drive” process to a single step!

14.10 Counter

This option allows you to enable/disable the Counter feature by turning this feature **ON** or **OFF**. This feature will notify you how many discs have been copied and how many discs are left to complete your project.

Menu Overview

14.11 DVD+R High Compatibility Mode

This feature allows you to enable/disable the DVD+R High Compatibility Mode feature by turning this feature **ON** or **OFF**. The purpose of this feature is to increase the compatibility of DVD+R media with a broader range of DVD Video players. This process will increase the amount of time required to duplicate your disc(s).

14.12 ISRC

This option allows you to enable/disable copying ISRC code of the Audio CD. ISRC is the serial# of the audio tracks that uniquely identifies the song in that audio track. This ISRC code is commonly found in commercial Audio CD and rarely seen on the home made Audio CDs. By enabling this feature, the duplication performance will be lowered.

14.13 Disable Drives

This feature allows you to disable certain drives/trays when those drives/trays are producing high failure rates or not functioning properly.

14.14 USB Connection

This feature allows you to turn on/off the USB port on the back of your duplicator. This option will allow a Writer on the duplicator to be controlled by a PC. This feature will only be visible if the supported USB Connection were installed.

*Please note that system will be restarted when this setting is changed.

14.15 Overburn (CDs Only)

This feature allows you to burn a few MB more than the standard capacity of the target CD (e.g. 75 minutes of recording time vs. 74 minutes). The default setting is **OFF**.

15. Utilities

15.1 Disc Info

This feature will identify your blank recordable Media's format, capacity, manufacture ID as well as the Media's certified writing speed. This function (Disc Info) can be found in the "Utility" menu.

Note: This feature only applies to media in the recording trays.

Menu Overview

15. Utilities - *continued*

15.2 Prescan

This feature allows you to scan and detect any bad sectors existing in the Master Disc. It is recommended that you perform a Prescan before starting the duplication task for all Master Discs. Approximately 50% of failures reported by the duplicator are caused by errors in the Master Disc which the Reader couldn't overcome. When this kind of failure occurs, it tends to waste all of your blank recordable medias.

15.3 System Info

By entering this menu, you will be able to see the many specification of your duplicator such as the firmware version, CPU type, RAM capacity. You can check the specifications by pressing **UP** or **DOWN** button.

15.4 Device Info

By entering this menu, you will be able to see the information for devices built inside your duplicator. That information includes but limited to manufacture, model number, etc.

15.5 Load Default

This function will reset all of the options back to manufacture's default. You can perform this function if your duplicator is acting abnormal. You need to perform "Shutdown" and restart the system in order for this to take effect.

15.6 Update Firmware

This function will update the software of your duplicator. To update, you need to insert manufacture Certified Update CD into the Reader and select this function by pressing **ENT** button. We strongly suggest you to not upgrade your duplicator's firmware unless your duplicator is getting unstable.

15.7 Save

This function will save all the settings you've modified since last time the system is booted.

Menu Overview

16. Manage Accounts

This feature allows the administrator the ability to:

- Create user accounts and passwords to prevent unauthorized use of this duplicator.
- View existing user account lists
- Edit existing user account information, including name and password.
- Delete existing user account(s).
- Enable/Disable this feature.

17. Autocopy

This function will allow the system to operate under the “Autocopy” mode for ease of operation.

18. Shutdown

This function will make sure it is safe to turn off your duplicator. Once you see “Ready to Power OFF” message, then you can safely turn off the machine via Power Switch. Turning off your duplicator without perform this function will increase the risk of damaging your duplicator.

Troubleshooting

1. No display on LCD or the unit does not operate when the power is on.

- Check the power cable connection and the power outlet.
- Make sure the power voltage matches the voltage of your power outlet.
- If the duplicator was stored in a location where the temperature dropped below 32°F (0°C) within the past 24 hours, leave the duplicator in a warm room with temperatures at least 65°F (19°C) for 4 hours prior to powering it on.

2. Cannot read source disc.

- Check the format of the master BD/DVD/CD or the master BD/DVD/CD itself for damage.
- Your Master Disc may be copy protected. Normally, most of the BD/DVD and some of the CD you have purchase from stores have been copy protected.
- Use the Writers to read your Master Disc by selecting one of writers as the Master Reading Source (Please refer to the tutorial: **Select the Source drive**”). if it works, make a copy of your Master Disc and treat the copy as the new master. Then set the Source back to the drive and try again.

3. Buttons do not function.

- The duplicator may still be busy with a task. Give it a moment and press it again. If it still doesn't work, turn off the machine, and then restart the machine after one minute.

4. Copy completed but the copies are not readable / executable?

- Use the “COMPARE” feature to check the copied disc.
- Based on our experience, the quality of your media plays a big role on this part. Try to use high quality media to prevent such problems.
- Please use another BD/DVD/CD player/ROM to test the copied media. Sometimes, your BD/DVD/CD Player/ROM may not be compatible with recordable BD/DVD/CD disc.

5. The failure rate is high.

- Lower the “write speed” and try again. Please refer to the tutorial: “Select Burn Speed.”
- Quality of blank disc may be poor.
- Quality of your Master Disc may be poor.

6. Do I need to upgrade my duplicator's firmware?

- Unless your system is getting unstable, we strongly suggest not upgrading your duplicator's firmware. Please contact our Tech Support if your system is getting unstable.

Troubleshooting

7. **Cannot boot-up or fails to upgrade firmware.**
 - Contact our Tech Support.
8. **Can I load data directly from my computer to my duplicator's Hard Drive?**
 - No, your duplicator's Hard Drive has a unique file system that computers will not recognize. Thus, you can't perform any read/write operations to the Hard Drive from your computer.
9. **How do I reset my duplicator back to default?**
 - a. Use **UP** or **DOWN** arrow button to navigate to the following screen.



- b. Press **ENT** to enter Utility Menu. You will see the following display:



- c. Use **UP** or **DOWN** arrow button to navigate to the following screen.



- d. Press **ENT** to enter Load Default Menu. You will see the following display:



- e. Press **ENT** to confirm and you system will be loaded back to default. Once the operation is complete, you will see the following display:



- f. You need to perform "Shutdown" and restart the system in order for this to take effect.

Troubleshooting

Error Codes

Typically the system will show an error message and error code if a problem occurs. Please reference the below diagram for a description of the error codes and the recommend solution:

Error Code	Error Message	Recommendation
200	Master Disc Empty	Blank Disc is in the Source Tray. Make sure the source is properly selected and double check the Master Disc.
201	Bad Master	The Master Disc is not recognized by the Source Tray. Please eject and reload the Master Disc or double check the Master Disc for quality.
202	To targets!	There is no blank disc(s) recognized by the system. Please make sure the blanks disc(s) is properly placed in the recording tray(s).
203	Burner Mixed or Firmware Version Mixed	The writers carry different model/version. They are required to be identical for proper duplication. Contact our Tech Support for detail.
204	Targets & Master Not Compatible!	The Master Disc is a different format than the blank disc(s). The format between the Master Disc and blank must be the same.
205	Targets Not Blank!	The blank media you've inserted are not blank. Check your blank media's quality.
206	Targets & Master Size Mismatch!	The size of your Master Disc and the copied disc doesn't match. This error usually occurs during the Compare process. Double check the master and the copied disc.
207	Targets M Code Mixed!	The blank discs you've placed are not identical. Please make sure they have the same brand and speed to ensure proper duplication.
208	Targets are not RW discs!	The media you are trying to erase are not RW media. ONLY RW media is able to be erased.
209	Master Disc is CSS Protected!	Your Master Disc is Copy Protected. You can not copy this type of disc.
210	Bad Discs!	The Blank media you are using are not being recognized by the Writers.
211	This format can not be tested!	The blank media you've inserted does not support TEST function You need to use either CD-R or DVD-R/RW media to perform TEST function.
212	DVD is not supported!	The system does NOT support DVD format.

Troubleshooting

Error Code	Error Message	Recommendation
213	DVD-RAM is not supported!	The system does NOT support DVD-RAM format.
230	Not enough HDD space	There is not enough hard drive space to create a new partition. Please delete some existing nonimportant partition to free up more spaces.
231	Redundant Name	The Partition Name you've entered has already been used. Please choose a different partition name.
232	Format Failed!	Unable to format the built in hard drive. It is likely the hard drive is bad. Contact Tech Support for Replacement.
233	Partition Corrupted	The partition data is corrupted. Normally either the Hard Drive is bad or the hard drive had being used by another system. Please re-format the hard drive.
240	Wrong Password!	Incorrect Password has been entered. Please confirm the password and try again.
241	Login Failed	After 3 attempts of entering an incorrect password the unit will lock. Please confirm the password and restart the system to try again.
251	Copy Audio Error	An error occurred during the recording process of a particular track. Mostly due to bad blank media. Please try with different blank.
252	Not Audio CD	The Master Disc is not an Audio CD. Only Audio CD's will be able to Edit Audio Tracks.
253	Over Blank Disc Capacity	The Audio Tracks you've selected is more than the blank media can hold. Please remove some tracks in order to proceed.
260	No update file	The system couldn't find the Update file to perform the System Firmware Update. Contact Tech Support for assistance.
261	Wrong update file	The update file you are trying to update is not compatible for your system.
262	Unknown flash model	This is a system error during the System Firmware Update. Please contact Tech Support for assistance.
263	User Abort	The system has acknowledged the Abort command.

Recommended Media

Certified LightScribe media is required for burning direct-to disc LightScribe labels. For best results, Aleratec Duplicator Grade LightScribe media is recommended.



CD-R LightScribe V1.2 Duplicator Grade Media 100 Pack™	Part No. 110116
CD-R LightScribe V1.2 Duplicator Grade Media 600 Pack™	Part No. 110120
CD-R LightScribe V1.2 Duplicator Grade Rainbow 100 Pack™	Part No. 110117
DVD-R LightScribe V1.2 Duplicator Grade Media 100 Pack™	Part No. 230114
DVD-R LightScribe V1.2 Duplicator Grade Media 600 Pack™	Part No. 230117
DVD-R LightScribe V1.2 Duplicator Grade Rainbow 600 Pack™	Part No. 230115
DVD+R LightScribe V1.2 Duplicator Grade Media 100 Pack™	Part No. 300114
DVD+R LightScribe V1.2 Duplicator Grade Media 600 Pack™	Part No. 300115
DVD+R LightScribe V1.2 Duplicator Grade Rainbow 100 Pack™	Part No. 300116
Non-LightScribe Blu-ray Media:	
BD-R 4x Duplicator Grade Blu-ray 10-Pack™	Part No. 370101
BD-R 4x Inkjet Printable Duplicator Grade Media™	Part No. 370102

Please visit www.aleratec.com/lightscribe-media.html for the most current listing of available Aleratec Duplicator Grade LightScribe Media.

Technical Support

After reading this User Guide, if you need additional assistance with this product, please contact Aleratec Technical Support. Our technical staff will be happy to assist you, but they may need your help to better assist you. Calling Aleratec Technical Support without all the necessary information can be both time consuming and frustrating. Therefore, please try to have the following information ready before calling:

1. Part Number - the part number is located on the back of the Stand-Alone Tower Publisher SLS.
2. Serial Number - the serial number is located on the back of the Stand-Alone Tower Publisher SLS.
3. Troubles - your questions about the Stand-Alone Tower Publisher SLS. Please provide enough information about your problems so our technical staff can recreate and diagnose it.

Technical Support Addresses and Phone Numbers

► By e-mail: support@aleratec.com

► By Telephone: **1-818-678-0484**

Technical Support Group can be reached 8:00 AM to 5:00 PM, Pacific Time, Monday through Friday, excluding U.S. holidays.

Please try to call from a phone near your computer system.

► Access is available 24 hours a day, 365 days a year, via:

The World Wide Web at: www.aleratec.com

FAX at: **1-818-678-0483**

Service and Support

Aleratec, Inc., Limited Warranty

This Limited Warranty covers defects encountered in the course of normal use of this product and does not apply to damage from improper use, abuse, accidents, unauthorized service, or inadequate packaging when shipping the product to Aleratec, Inc.

Aleratec, Inc. provides the following limited warranty for this product only if the product was originally purchased for use, not re-sale, from Aleratec, Inc., an Aleratec, Inc. authorized dealer or distributor, or any other Aleratec, Inc. approved reseller for this product. This product is warranted to be free from defects in workmanship and material for a period of one year from the date of your original purchase.

If the product fails during normal and proper use within the warranty period, Aleratec, Inc. will, at its option, repair or replace the product at no cost (except shipping and insurance). This limited warranty does not include service to repair damage from improper installation, accident, disaster, misuse, abuse, or modifications to the subsystem, or by any other causes unrelated to defective materials or workmanship.

Service and Support

Please Note:

This Warranty is valid only within the United States and Puerto Rico, and applies only to products that are new and unopened on the date of purchase. For areas outside the United States and Puerto Rico, contact the authorized dealer from whom you purchased this product to determine which warranty, if any, applies.

THIS LIMITED WARRANTY CONSTITUTES YOUR SOLE AND EXCLUSIVE REMEDY, AND THE SOLE AND EXCLUSIVE LIABILITY OF ALERATEC, INC., AND IS IN LIEU OF ALL OTHER WARRANTIES, EXPRESSED OR IMPLIED, INCLUDING, BUT NOT LIMITED TO ANY IMPLIED WARRANTY OF MERCHANTABILITY OF ITEMS FOR A PARTICULAR PURPOSE.

Your sole remedy will be repair or replacement, with new or refurbished components, as provided in this Limited Warranty. Aleratec, Inc. will not be liable for any direct, indirect, special incidental products or consequential damages, including, but not limited to, any loss of data or loss of profits or business, regardless of the form of action or theory of liability resulting from any defect in, or use of, this product (even if Aleratec, Inc. has been advised of the possibility of such damages).

In any event, the liability of Aleratec, Inc. under this Limited Warranty, for damages to you or any third party, regardless of the form of action or theory of liability, will not exceed the purchase price you paid for this product.

Some states do not allow limitations of the disclaimer of implied warranties, the period an implied warranty lasts, or the exclusion or limitation of incidental or consequential damages, so the exclusions and limitations stipulated in this Limited Warranty may not apply to you. This Limited Warranty gives you specific legal rights, and you may have other rights which vary from state to state.

Service and Support

To Obtain Warranty Service:

You must ship your subsystem to the authorized dealer where your subsystem was purchased within the one year warranty period and no later than thirty days after discovery of claimed defect, whichever occurs first. In either case, you must provide proof of original purchase before any warranty service can be performed. Products and parts provided as a result of warranty service may be other than new but will be in good working order and become your property at the time of exchange. At the same time, the exchanged products or parts become the property of Aleratec, Inc.

When shipping the subsystem for service, you agree to insure the Duplicator, to prepay shipping charges, and to use the original shipping container or equivalent. Any service outside the scope of this limited warranty will be at Aleratec, Inc.'s or its Authorized Service Provider's rates and terms then in effect.

This warranty gives you specific legal rights; you may also have other rights which vary from state to state.

Technical Support FAX Back Form

Aleratec, Inc. Technical Support Fax Back Form

Please record the following information to help expedite any warranty claim:

Model No.: _____ Serial No.: _____

Date Purchased: _____

Place of Purchase: _____

To: Technical Support Group FAX: 1-818-678-0483

FROM: _____ FAX: _____

E-MAIL: _____

RE: _____ TEL: _____

DATE: _____ # OF PAGES: _____

I am experiencing the following problems with my 1:15 Blu-ray/DVD/CD Tower
Publisher SLS:

By answering these questions, your problem will be solved more rapidly. Make copies as necessary. You can reach us electronically at: www.aleratec.com on the internet.



Aleratec[®]
www.aleratec.com
The Prosumers' Choice

Document Number: 260203_UG_ENG_Rev. A
Specifications subject to change without notice.

Copyright © 2011

Aleratec, Inc.
9851 Owensmouth Avenue
Chatsworth, CA 91311 U.S.A.

www.aleratec.com