



Compact range - big performance

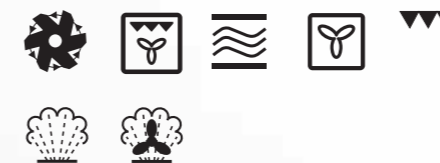
Combine your products together for a truly unique look with the introduction of a Compact range from Electrolux. Ideal for creating a unique look for your kitchen in both design and functionality when space is at a premium. These products will truly add style and a wow factor!

INSIGHT



EOK96030

Compact Multi-Function oven with steam



Oven functions:

- Full steam ideal for vegetables, rice & fish
- Partial steam ideal for roasting & baking
- Multi-function for complete cooking flexibility
- Turbo grill for a spit roast effect

Oven features:

- Stunning design - with light bar to complement today's modern kitchens
- 24 Hour electronic clock, minute minder and fully programmable timer
- Digital interactive touch control display - easy to use
- 25W Interior light
- Full width meat/grill pan
- Enamel interior
- Catalytic roof liners

- Colour: Anti-fingerprint Stainless Steel (EOK96030X)
- Energy rating:



Optional accessories:

- Full width glass roasting dish (GBS426)

INSIGHT



EOK86030

Compact Multi-Function oven with microwave



Oven functions:

- Microwave oven for fast cooking, heating and defrosting
- Combination microwave cooks your food in half the normal time
- Multi-function - for complete cooking flexibility
- Auto cook and defrost programmes
- Turbo grill for a spit roast effect

Oven features:

- Stunning design - with light bar to complement today's modern kitchens
- 24 Hour electronic clock, minute minder and fully programmable timer
- Digital interactive touch control display - easy to use
- 25W halogen Interior light
- Full width meat/grill pan
- Enamel interior

- Colour: Anti-fingerprint Stainless Steel (EOK86030X)

Optional accessories:

- Full width glass roasting dish (GBS426)

INSIGHT



EOK66030
Compact Oven with Grill



Oven functions:

- Low temperature fan cooking / Fan controlled defrosting / Variable grill / Fast cooking
- Ultrafan® oven for complete cooking flexibility
- Turbo grill for a spit roast effect

Oven features:

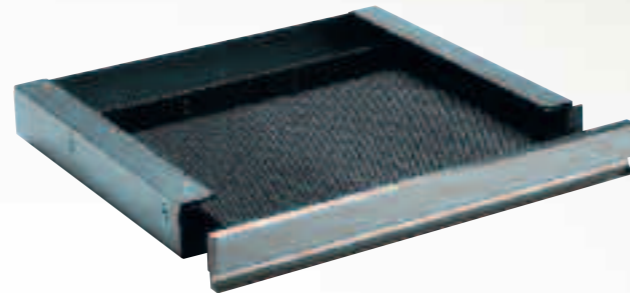
- Stunning design - with light bar to complement today's modern kitchens
- 24 Hour electronic clock, minute minder and fully programmable timer
- Digital interactive touch control display - easy to use
- 25W Interior light
- Full width meat/grill pan
- Enamel interior
- Catalytic roof liners

- Colour: Anti-fingerprint Stainless Steel (EOK66030X)
- Energy rating:

B

Optional accessories:

- Full width glass roasting dish (GBS426)



PKD6070
Accessory Drawer

Functions:

- Storage facility for coffee machine accessories / compact ovens
- Divider for organising storage
- Waste dish
- Stylish drawer glides easily on telescopic runners
- Anti-slip mat

- Colour: Anti-fingerprint Stainless Steel (PKD6070M)

INSIGHT



ETV45000
Integrated LCD TV

Features & functions:

- 19" LCD TV for sharp, clear images - for viewing your favourite programmes whilst preparing food
- Remote control - convenient
- Multi-view angles - TV can be set at the appropriate angle for the best viewing
- Space to house a dvd player if required
- Flush fitting - TV tucks neatly away when not in use

- Colour: Anti-fingerprint Stainless Steel (ETV45000X)



EBA60010X
Semi Automatic Integrated Coffee Machine - Great Italian style espresso coffee at home.

Features & functions:

- Stunning design - with light bar to complement today's modern kitchens
- Uses fresh coffee beans, ground coffee or pods
- Height adjustable coffee dispenser - for espresso cups or coffee mugs
- Integral coffee bean grinder - freshly ground coffee every time
- Cool light illuminates the coffee outlet
- LED sensors indicate when water, coffee needs refilling or the drawer used for waste coffee needs emptying
- 2.5l water tank with BRITA® filter for pure coffee
- Steam/water spout for: americanos/lattes, cappuccinos or hot chocolate
- Practical drip tray - contains any spillage Telescopic runners with security lock for easy access

Controls:

- Rotary controls & push buttons
- LED display

- Colour: Anti-fingerprint Stainless Steel (EBA60010X)

INSIGHT



EIW60002
Compact Integrated Refreshment Centre

Features & functions:

- Stunning design - with light bar to complement today's modern kitchens
- Dispenses filtered water and ice hygienically and safely
- Plumbed in to mains water supply - convenient and always ready to dispense: ambient temperature water / chilled water / sparkling water / clear ice cubes
- Environmentally friendly - no plastic bottles to dispose of
- No more heavy bottles to carry home
- **This appliance requires a water inlet and a waste outlet facility within 4 metres of the product**

- Colour: Anti-fingerprint Stainless Steel (EIW60002X)

Warming drawers

Electrolux were thinking of you by introducing a selection of warming drawers to our built-in kitchen range. Warming drawers are both useful and versatile, helping you with the preparation and timing of your meals.

Keep your food warmer, for longer.

Not only will it warm your plates, it will also keep pre-cooked food warm safely. This is ideal for the guest that is running late or if you're trying to combine different elements of the meal together. There are 3 sizes available, 14cm which holds six international place settings, 21cm which holds nine international place settings and 29cm which holds twelve international place settings. The warming drawers are easy to install and are designed to complement our range of stainless steel single ovens, compact ovens and microwaves.

Features

Keep warm at 80°C
Maximum setting.

Cookware & utensil warming
2 settings.

Easy to clean removable non-slip mat
Prevents crockery damage.



EED14600X holds up to 6 place settings.



EED21600X holds up to 9 place setting.



EED29600X holds up to 12 place settings.

Power on indicator light
Rotary control
Easy to use.

