

# Electrolux Salamander

## Adjustable top salamanders

Electrolux salamanders are perfect for grilling and gratin-baking your dishes. The range offers models for table-top or wall installation, with different grid-sizes and installed power. The salamanders on this sheet have electric heat radiation from the top that can be moved vertically. Both sides of the salamander are open, for ease of use and rapid cooling.



Model 775302

### EASY TO INSTALL

- Table-top model.

### EASY TO CLEAN

- Manufactured entirely in stainless steel AISI 304.
- Easy to remove cooking grid and drip tray.

### EASY TO USE

- Top with heating element can be moved vertically to guarantee perfect result.
- Open sides for rapid cooling and ease of use.
- Available with 1 or 2 heating elements with separate control.

### EASY TO MAINTAIN

- Meets the requirements of CE for safety.

### EASY ON THE ENVIRONMENT

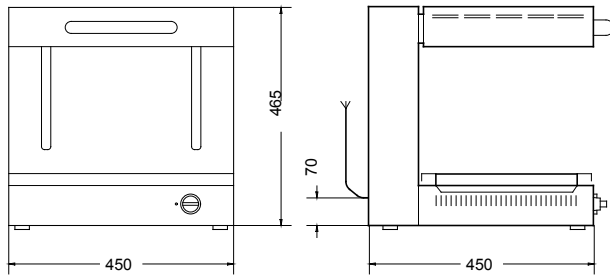
- 98% recyclable by weight.



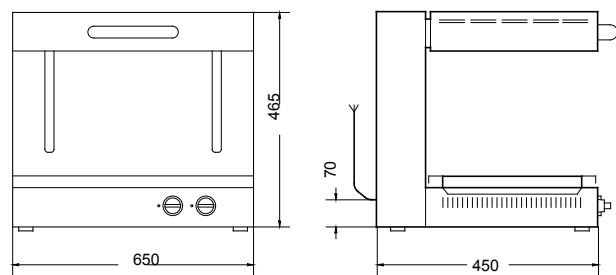
**Electrolux**

775301

775302



SPL-283420



SPL-283430

Electrolux Salamander

Adjustable top salamanders

DEAC030

2009-03-03

	SALE04 775301	SALE06 775302
<b>PAIGALDUSJONIS</b>		
I - Elektriühendus	220/240 V, 1N, 50/60	220/240 V, 1N, 50/60
<b>TEHNILISED ANDMED</b>		
Energia	Elekter	Elekter
Välismõõtmed -mm/laius	450	650
Välismõõtmed -mm/sügavus	450	450
Välismõõtmed -mm/kõrgus	465	465
Võimsus - kW		
paigaldatuna-elekter	2	3.8
Netokaal - kg	50	50

Võib muutuda ilma etteatamata