

Job: _____
Engineer: _____
Contractor: _____
Prepared By: _____ Date: _____
Model: _____ Indoor/Outdoor: _____

XTherm™ - Type WHP

Water Heaters
Models 1005-2005

97% Thermal Efficiency at Full Rate; Up to 99% at Part Load

100% Factory Fire Tested

Maximum Outlet Water Temperature: 160°F

Minimum Acceptable Inlet Water Temperature: 50°F

Full Safety Diagnostics with History

Footprint: Less Than 10.8 ft²

Limited Twenty-Five-Year Thermal Shock Warranty

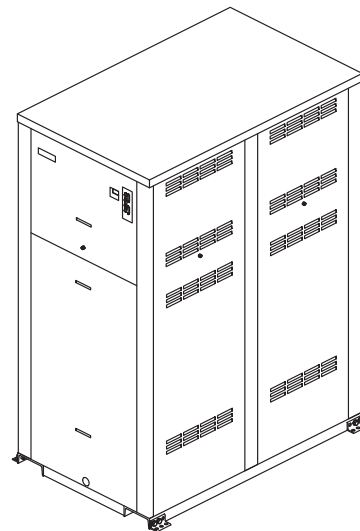
Limited Ten-Year Primary Heat Exchanger Warranty

Limited Five-Year Secondary Heat Exchanger Warranty

Full Electronic Modulation, Constant Ratio 4:1 Turndown

Digital Controller with LCD Display

Status Display Lights



Heat Exchanger

- Bronze Headers
- ASME HLW Stamped; 160 PSIG MAWP
- National Board Listed
- Cupro Nickel Fin Tubing
- ASME Powder-Coated Tube Sheet
- Silicone High Temp O-Rings
- ASME Pressure Relief Valve 125 PSIG – Standard (Loose)
- 150 PSI Air Vent, Auto
- T&P Gauge (Loose)
- Stainless Steel Secondary Heat Exchanger
- Stainless Steel Evaporator Plate
- Boiler Pump: Bronze, _____ HP, 120V, 1Ø, 60Hz

Control

- 120V, 60Hz, 1Ø, Power Supply
- 120/24V 60Hz Transformer
- Ignition Module
 - ☐ 3-Try – Standard
 - ☐ Single-Try – Option C-6
- Hot Surface Ignition (HSI)
- Remote Flame Sensor
- High Limit Control, Auto Reset
- On/Off Power Switch
- Flow Switch
- Blocked Vent Pressure Switch
- Combustion Air Proving Switch
- Freeze Protection
- Pump Switch
- Pump Time Delay
- Blocked Condensate Switch

Control (cont.)

- Diagnostics Panel with LCD Display, 2 lines, 20 characters
- Digital Temperature Control
- Water Temperature Sensors (3)
- Cold Water Protection

Burner

- Ultra-Low NOx: Less than 20 PPM (Natural Gas Only)

Gas Train

- Fuel
 - ☐ Natural Gas
 - ☐ Propane
- Zero Governor Regulator
- Dual-Seat Combination Valve
- Electronic Firing Mode (WHP)

Construction

- Indoor/Outdoor Construction
- Front Controls Enclosed
- PolyTuf Powder Coat Finish
- Rear Connections (Water, Gas, Vent, Electrical, Comb. Air, Cond. Drain)
- Combustion Air Filter
- Design Certified ANSI Z21.10.3/CSA 4.3

Venting

- Vent Termination
 - ☐ Outdoor or Indoor, Vertical – Option D-11
 - ☐ Indoor, Horizontal – Option D-15
- Extractor - Optional
 - ☐ By others
 - ☐ Not required

Multi-Boiler Digital Temp Controllers

- ☐ B-36 TempTracker Mod+, 2-4 Water Heaters
- ☐ B-37 TempTracker Mod+, 5-10 Water Heaters
- ☐ B-38 TempTracker Mod+, 11-16 Water Heaters

Options

- ☐ F-10 Low Water Cut-Off, Remote Probe
- ☐ I-5 High Limit, Manual Reset, Adj., 100-200°F
- ☐ S-1 Low Gas Pressure Switch, Manual Reset
- ☐ S-2 High Gas Pressure Switch, Manual Reset
- ☐ Z-12 Condensate Neutralizer Kit

Regulatory Agency Requirements

☐ _____

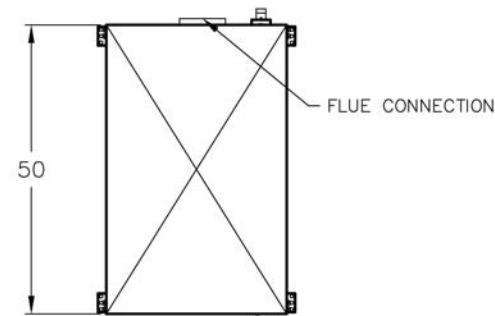


Raypak®
A Rheem® Company

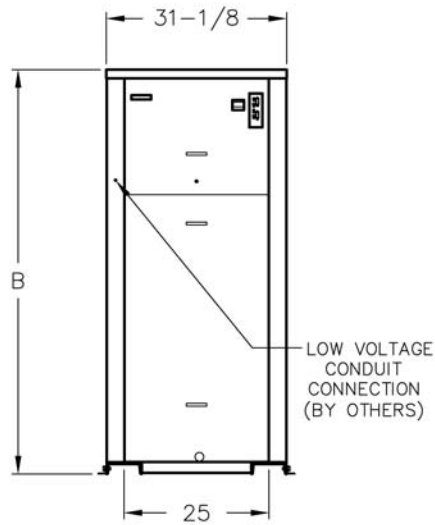
XTherm – Type WHP

Models 1005-2005

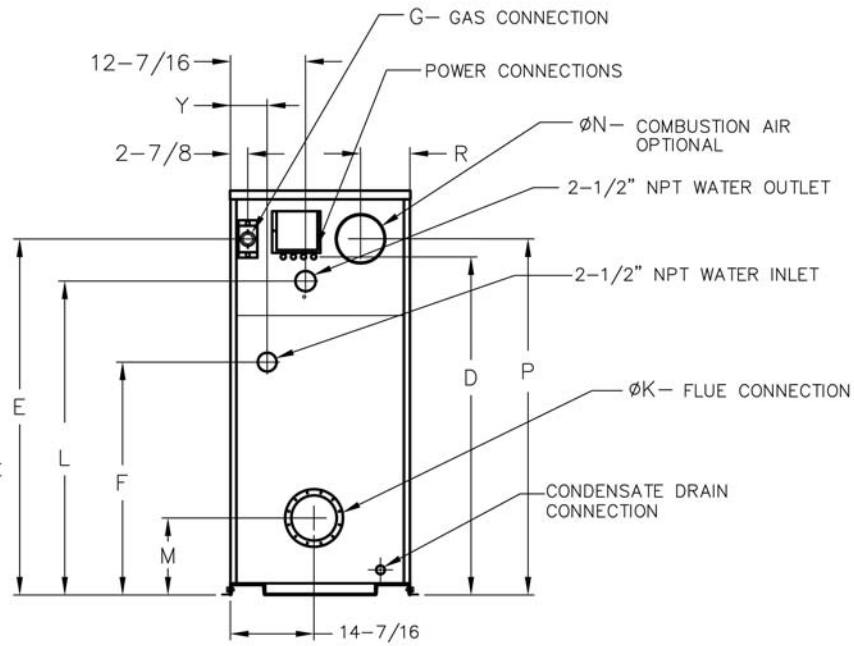
Model _____



TOP VIEW



FRONT VIEW



REAR VIEW

CLEARANCES (in.)

	Front	Rear	Right	Left	Top	Floor	Vent
Certified Minimum	24	12	1	1	0	0	1
Recomm. Service	24	36	24	1	10	n/a	n/a

NOTE: Primary/Secondary plumbing is mandatory for proper operation.

Model (WHP-)	MBTUH		Dimensions (in.)												Amp Draw**		Ship Weight (Lbs.)
			B	D	E	F	G*	K	L	M	N	P	R	Y	Heater w/ Pump	Pump	
	Input	Output	Height				NPT	Flue Ø			C/A Ø						
1005	999	969	55-1/8	45	47-1/8	36-1/2	1-1/4	6	40-1/16	11-1/2	6	47-1/8	8-1/16	6-1/16	22	1/2 – 7	1065
1505	1500	11455	67-1/8	57	59-1/16	38-1/2	1-1/4	8	52-1/16	12-5/8	8	59-1/8	8-3/16	6-1/16	26	3/4 -11	1234
2005	1999	1939	81-1/8	71	71-3/16	38-1/2	2	8	64-1/16	12-5/8	8	73-1/8	8-3/16	6-1/4	35	1 - 14	1461

Note: Ratings shown are for elevations up to 4,500 feet. For installations at elevations above 4,500 feet, please consult the factory for additional instructions.

* For Propane Gas, all models are 1"

** Supply breaker must have delayed trip.

Model (WHP-)	RATES OF FLOW (GPM)			
	Maximum Flow		Minimum Flow	
	GPM	ΔT (°F)	GPM	ΔT (°F)
1005	113	17	47	40
1505	113	25	71	40
2005	116	33	95	40