

Job: _____

Engineer: _____

Contractor: _____

Prepared By: _____ Date: _____

Model: _____ Indoor/Outdoor: _____

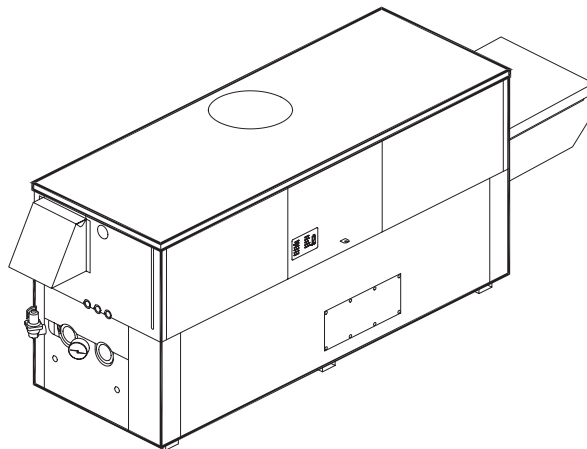
Hi Delta® - Type H

Hydronic Heating Boiler
Models 302BE-902BE

87% Efficiency

MBTUH Input: _____

- ♦ 100% Factory Fire Tested
- ♦ Efficiency: 87%
- ♦ Maximum Outlet Temperature: 230°F
- ♦ Minimum Non-Condensing Inlet Temperature: 120°F
- ♦ Thermal Shock Proof Heat Exchanger
- ♦ Limited Twenty-Year Thermal Shock Warranty
- ♦ Limited Ten-Year Heat Exchanger Warranty
- ♦ Diagnostic Center with Fault History
- ♦ PolyTuf Powder Coated Cabinet
- ♦ No Combustible Floor Shield Required
- ♦ Fan-Assisted
- ♦ Patented Burner Security Blanket



Heat Exchanger

- H Stamp
- Headers
 - ☐ Glass-Lined Cast Iron – Standard
 - ☐ Bronze – Option A-1
- ASME Inspected and Stamped 160 PSIG Working Pressure
- National Board Approved
- Fin Tubing
 - ☐ Copper – Standard
 - ☐ Cupro Nickel – Option A-3
- ASME Steel Tube Sheet
- Silicone High Temp O-Rings
- Pressure Relief Valve, ASME
 - ☐ 45 PSIG – Standard on Models 302BE and 402BE
 - ☐ 60 PSIG – Standard on Models 502BE-902BE
 - ☐ _____ PSIG – Optional
- Temperature and Pressure Gauge
- Water Connections
 - ☐ Left – Standard
 - ☐ Right – Option A-6

Controls

- 120V, 60Hz, 1Ø Power Supply
- 120/24V 60Hz Transformer
- 100% Shutoff/Lockout
- Hot Surface Ignition
- Remote Flame Sensor
- High Limit Control, Manual Reset
- On/Off Power Switch
- Manual Shut-Off, Front-Mounted
- Flow Switch
- Blocked Vent Pressure Switch
- Combustion Air Proving Switch
- Economaster Pump Time Delay

Gas Train

- Manual Gas Shut-Off Valve(s)
- Gas Pressure Regulator
- Safety Shut-Off Valve
- Firing Control Valve
- Firing Mode
 - ☐ On/Off (H4): Models 302BE and 402BE
 - ☐ 2-Stage (H3): Models 302BE - 902BE
- Fuel
 - ☐ Natural Gas
 - ☐ Propane Gas
 - ☐ 4" WC Gas Supply Pressure G-20
- Design Certified ANSI Z21.13/ CSA 4.9

Venting

- Vent Location
 - ☐ Top – Standard
 - ☐ Rear – Option D-14
- Vent Termination Cap
 - ☐ Outdoor D-11
 - ☐ Indoor, Horizontal D-15
 - ☐ Indoor, Vertical (by others)
- Combustion Air
 - ☐ In-Line Filter Kit (Recommended with Ducted-In Air Only) D-17
 - ☐ Air Intake Elbow D-16
- Extractor - Optional
 - ☐ By Others
 - ☐ Not Required

Construction

- Indoor/Outdoor Construction
- Enclosed Front Controls

Burner

- Ultra-Low NOx: Less than 30 PPM

Temperature Controls

- ☐ B-2 Tankstat, Single-Stage (100-200°F)
- ☐ B-3 Tankstat, 2-Stage (100-200°F)
- ☐ B-6 Aquastat, 2-Stage (100-200°F)
- ☐ B-___ TempTracker Digital Controller, 2-Stage
- ☐ B-___ TempTracker Digital Controller, 4-Stage
- ☐ Y-241 Electronic Sequencer, 4-Stage
- ☐ Y-281 Electronic Sequencer, 8-Stage

Options

- ☐ C-6 Ignition Module, Manual Reset
- ☐ D-21 TruSeal® Direct Vent
- ☐ F-10 Low Water Cut-Off, Remote Probe
- ☐ I-1 High Limit Control, Auto Reset
- ☐ P-___ Pump: _____ HP, 120V, 1Ø, 60Hz
- Water Hardness: _____ GPG
 - ☐ Cast Iron
 - ☐ Bronze
 - ☐ Mounted
 - ☐ Loose
 - ☐ Front
 - ☐ Rear
- ☐ P-26 Cold Water Start (See 2000.48)
- ☐ S-1 Low Gas Pressure Switch, Manual
- ☐ S-2 High Gas Pressure Switch, Manual
- ☐ X-1 SureRack™ Kit
- ☐ X-2 SureRack Add-on
- ☐ _____

Regulatory Agency Requirements

☐ _____



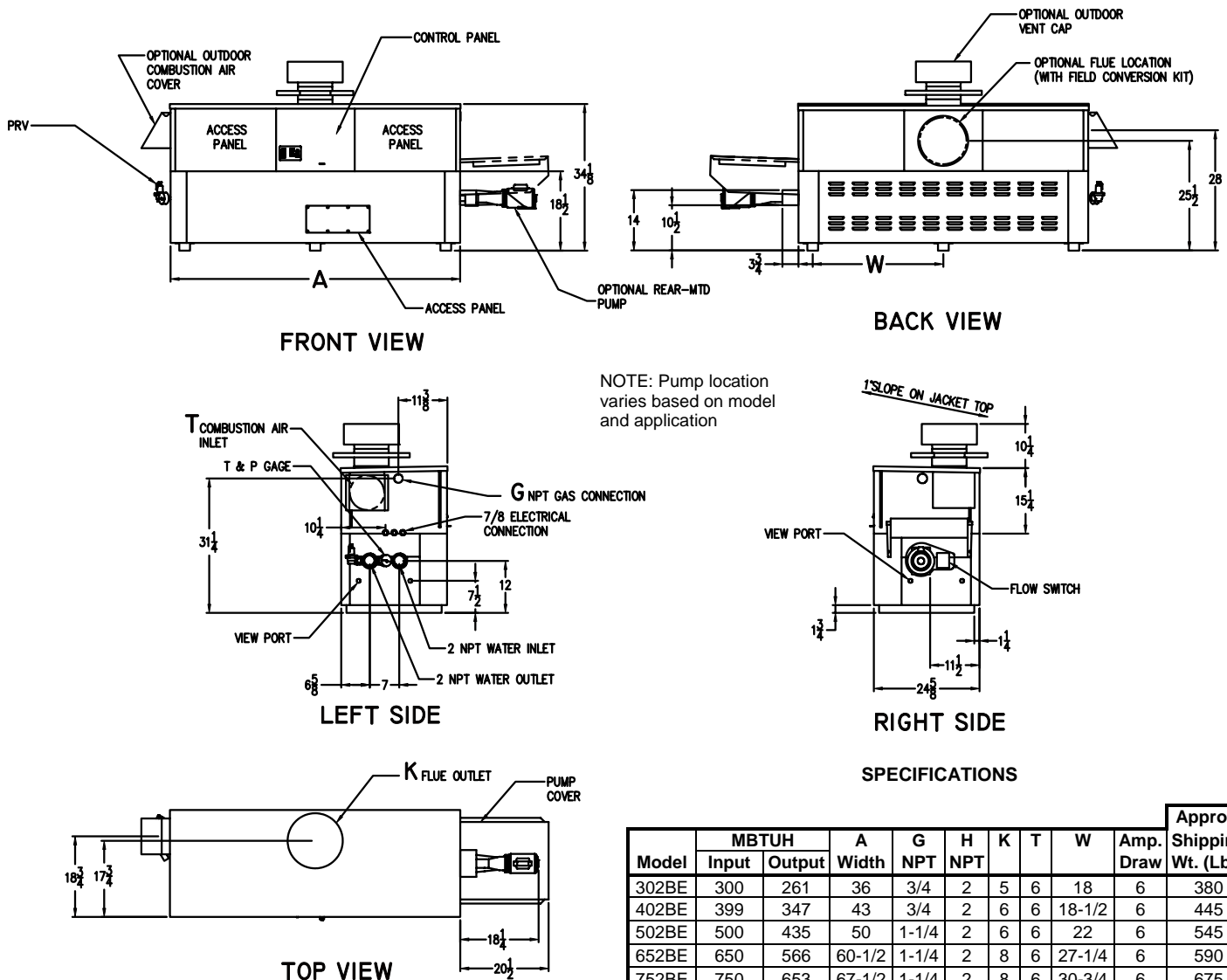
Raypak®

A Rheem® Company

Hi Delta – Type H

Models 302BE-902BE, 87% Efficiency

Model _____



Dimensions are in inches.

RATES OF FLOW AND PRESSURE DROPS

Model	10°F ΔT		20°F ΔT		30°F ΔT		Min. Flow			Max. Flow		
	GPM	ΔP (ft)	GPM	ΔP (ft)	GPM	ΔP (ft)	GPM	ΔP (ft)	ΔT	GPM	ΔP (ft)	ΔT
302BE	52	3.4	26	<1	N/A	N/A	20	<1	26	90	9.8	6
402BE	69	5.8	35	1.5	23	<1	20	<1	35	90	10.0	8
502BE	87	9.9	44	2.5	29	1.2	22	<1	40	90	10.5	10
652BE	N/A	N/A	57	4.3	38	2.0	28	1.2	40	90	10.7	13
752BE	N/A	N/A	65	5.8	44	2.7	33	1.7	40	90	11.0	15
902BE	N/A	N/A	78	9.0	52	4.1	39	2.4	40	90	11.8	17

Basis is 20 GPM or 40°F ΔT for minimum flow, 90 GPM for maximum flow.

NOTES: 1. Rates shown are for natural or propane gas, and elevations up to 5,000 feet. For installation above 5,000 feet, please contact manufacturer.
2. Required natural gas pressure is 7 – 10.5" WC. Required propane gas pressure is 11 – 13" WC.

Raypak, Inc. ▪ 2151 Eastman Avenue, Oxnard, CA 93030 ▪ (805) 278-5300 ▪ Fax (800) 872-9725 ▪ www.raypak.com