



Belkin Components  
G700 Series  
Portable PDA Keyboard  
User Guide for Palm OS  
Handhelds

P74041



# Index

Introduction .....	2
Features and Specifications.....	3
Operating the G700 Keyboard	
Opening the Keyboard .....	4
Closing the Keyboard .....	4
On-Keyboard Charging.....	6
Driver and Keyboard Installation	
Installing the G700 Keyboard Driver .....	7
Enabling the Driver.....	9
Connecting and Removing the PDA .....	9
Customizing Keyboard Settings	
Configuring the Keyboard.....	10
Combination Keys .....	12
Assigning Command Hot Keys .....	15
FCC/CE/Warranty Statement .....	16

## Introduction

Congratulations! You have just purchased the definitive tool to extend your handheld's capabilities. The Belkin G700 Series Portable PDA Keyboard will give you an easy and convenient way to add data to your Palm OS handheld.

Designed for the mobile professional, the G700 weighs in at only seven ounces and closes to a size compact enough to fit easily into a coat pocket.

For our complete selection of PDA accessories and mobile enhancements, please visit us at [belkin.com](http://belkin.com).

## Features and Specifications

- Easy connection compatibility with your Palm OS device
- Standard QWERTY keyboard layout
- Shortcut keys for faster operation
- Ultra-portable design
- Pass-through charging capability

Opened: 6.85" x 9.77" x 2.75"  
(174mm x 248mm x 70mm)

Closed: 3.74" x 5.83" x .55"  
(95mm x 148mm x 14mm)

Weight: 7 ounces (198.4g)

Temperature Endurance: 70° C

Power Consumption:

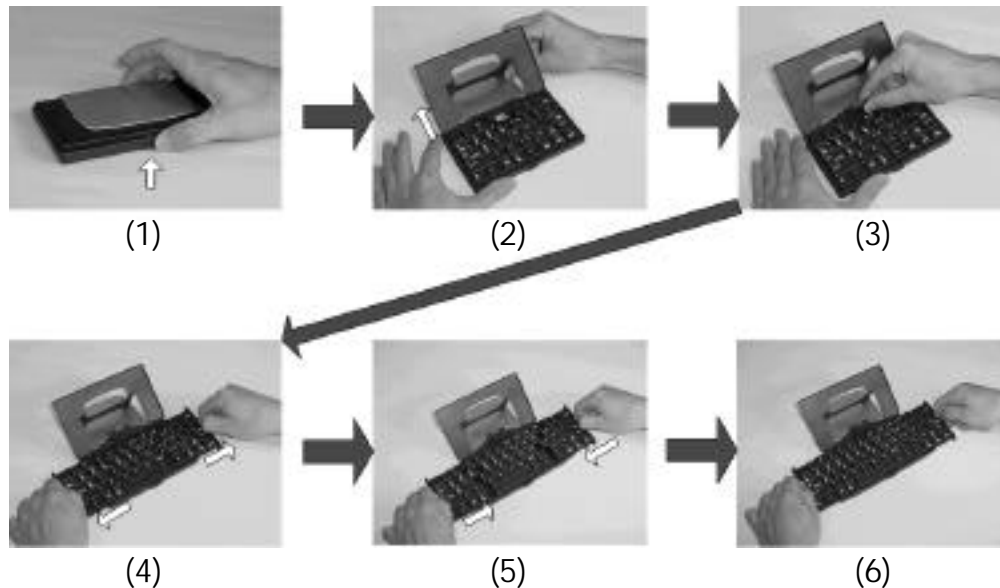
In Operation: 1mA

In Sleep Mode: 1 $\mu$ A

# Operating the G700 Keyboard

## Opening the Keyboard

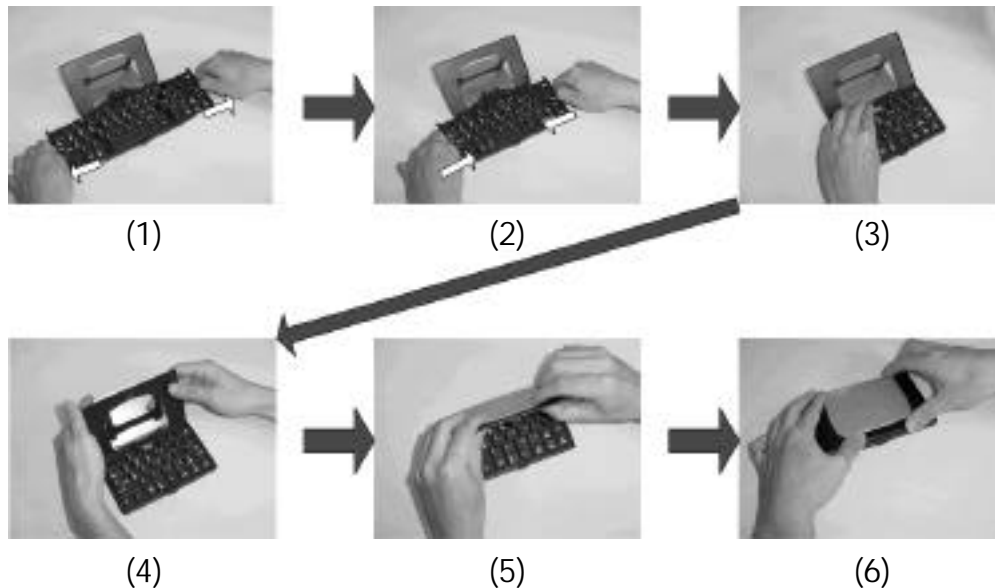
1. Open the keyboard by pressing the button.
2. Raise the lid and stand so that they are fully extended.
3. Flip up the keyboard connector stand to its full upright position.
4. Pull out the left and right section of the keyboard until the middle section pops up.
- 5-6. Push the left, then the right section of the keyboard together.



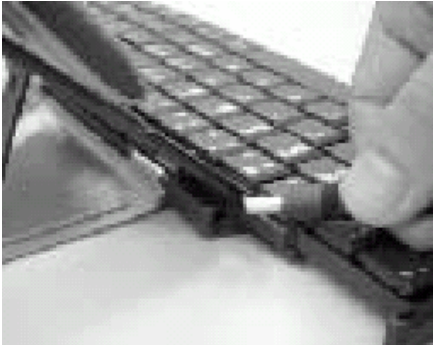
## Operating the G700 Keyboard (continued)

### Closing the Keyboard

1. Gently pull the left and then the right section of the keyboard apart.
2. Push the left and right section of the keyboard forward the center of the keyboard. The middle section will automatically move down and make room for the left and right sections. DO NOT push down on the middle section.
3. Flip down the keyboard connector head until it lays flat within the keyboard.
4. Pull the lid and stand together.
5. Press the lid together with the upper frame.
6. Gently press down on the cover until it snaps in the closed position.



## On-keyboard charging



The G700 keyboard is designed with an electronic circuit that accepts AC power. The power receptacle located on the side of keyboard.

A plug adapter is included with your G700 keyboard. This adapter attaches to your PDA's AC power adapter, allowing you to charge your PDA directly while using the keyboard.

***Note: Your PDA must be equipped with rechargeable batteries as standard equipment. This feature is not compatible with after-market recharging products.***



# Driver and Keyboard Installation

## Installing the G700 Keyboard Driver

### Before Installation

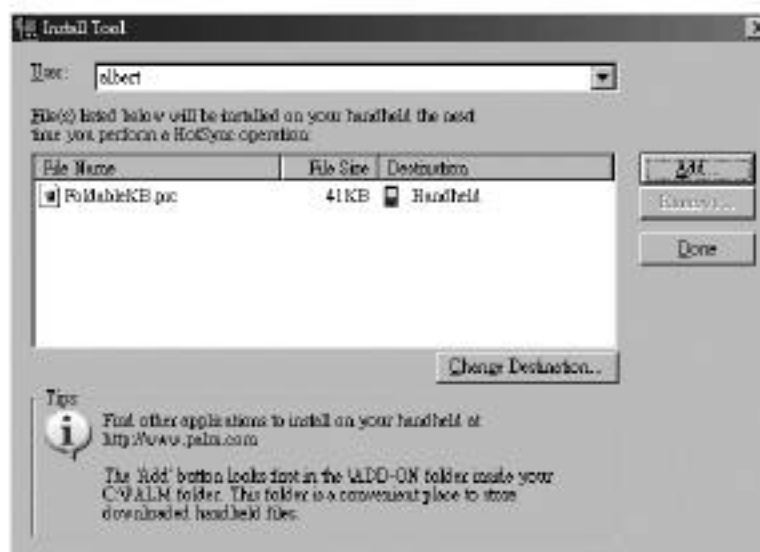
1. To prevent potential software conflicts, disable other keyboard applications or specialized applications that use the same serial address installed in your Palm OS device.
2. You must have 100Kb of available memory to install the driver.

### Install the Driver

1. Connect the Palm OS PDA to a computer through its cradle or cable.
2. Insert the driver CD into your CD-ROM drive.
3. If the CD-ROM has been set to auto-run mode, the install process will proceed automatically. Please follow on-screen instructions to finish all steps. Otherwise, please follow steps 4-7 to install driver manually.

## Driver and Keyboard Installation (continued)

4. Tap twice on the “My Computer” icon and then choose your CD-ROM drive.
5. Double-click on the “Belkin G700.prc” file to launch the installer. The Palm OS “Install Tool” window will appear.



6. Select the file (Belkin G700.prc) by clicking on the file name once.
7. Click “Done”. The driver file will be installed into your handheld the next time you perform a HotSync® operation.

To complete your installation onto your handheld, simply perform the HotSync operation. When complete, the icon for G700 keyboard will appear on the “Applications” screen of your handheld.

## Driver and Keyboard Installation (continued)

### Enabling the Driver

1. Power on your PDA.
2. Tap on the “Applications” icon. Your applications window will appear on-screen.
3. Tap on the “Keyboard” icon. The configuration screen will appear.
4. Tap on the “Status” pull-down menu and select “On”.
5. Tap on the “Status” pull-down menu to enable or disable the keyboard.



### Connecting and Removing the PDA

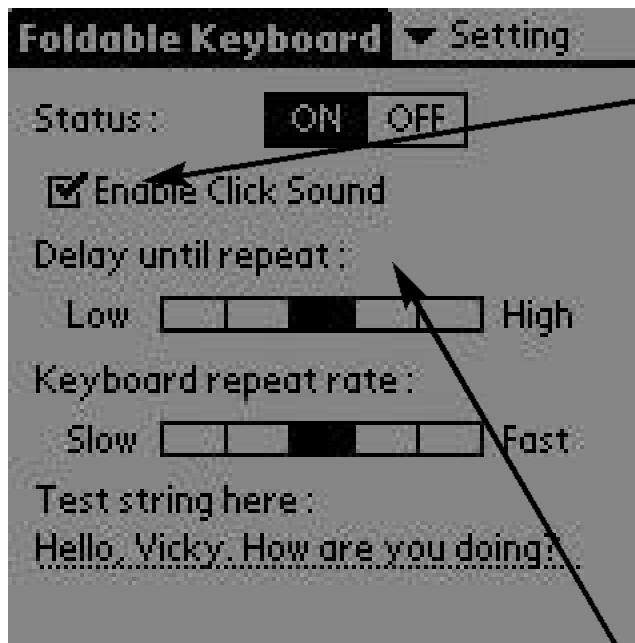
Align the PDA's connector with the keyboard's connector. Gently slide the PDA onto the connector until it is firmly seated on the connector.

To remove, hold the keyboard in place and gently pull the PDA up from the connector until it is completely removed from the keyboard.

# Customizing Keyboard Settings

## Configuring the Keyboard

You can adjust various keyboard settings to your personal preference.

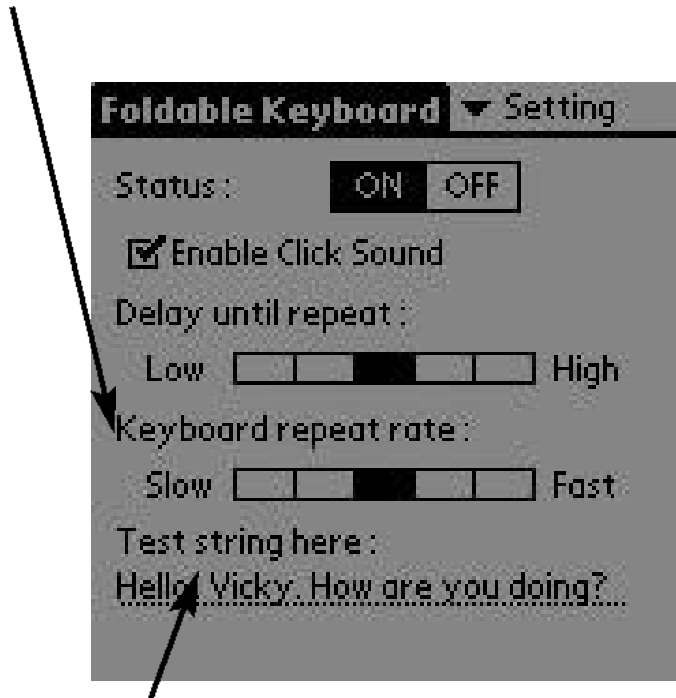


Tap on the “Enable Click Sound” box to hear a click while typing.

Tap in the “Delay until repeat” slide scale to lengthen or shorten the time the keyboard will wait before repeatedly displaying a depressed key. Tapping further right on the scale specifies a longer delay time.

## Customizing Keyboard Settings (continued)





Tap in the “Keyboard repeat rate” slide scale to adjust the rate at which the keyboard will display a character. Tapping further right on the scale specifies a faster repeat rate.








Tap in the “Test string here” field to enter characters from the keyboard.

## Combination Keys

Certain keys on the G700 keyboard can perform additional functions in the combinations listed below.

Shift + any key	Enters uppercase character
Ctrl + C	Copy
Ctrl + V	Paste
Ctrl + X	Cut
Cmd + Left arrow	Move cursor to the beginning of the line
Cmd + Right arrow	Move cursor to the end of the line
Tab	Tabs forward through edit lines
Shift + Tab	Tabs backward through edit lines
Fn + Tab	Inserts a tab in a line
Shift + Right arrow	Selects right area
Shift + Left arrow	Selects left area
Shift + Up arrow	Selects up area
Shift + Down arrow	Selects down area
Fn + 1	 Applications
Fn + 2	 Menu
Fn + 3	 E-mail
Fn + 4	 Find

## Combination Keys (continued)

Fn + 5	 Calendar
Fn + 6	 Address Book
Fn + 7	 To do list
Fn + 8	 Memo Pad
Fn + 9	 Calculator
Fn + 0	New
Fn + Q, then release and type A, E, I, O, U, or Y	Acute accent: Á, É, Í, Ó, Ú, Ý
Fn + W, then release and type A, E, I, O, or U	Grave accent: À, È, Ì, Ò, Ù
Fn + E, then release and type A, E, I, O, or U	Circumflex: Â, Ê, Î, Ô, Û
Fn + R, then release and type A, N, or O	Tilde: Ã, Ñ, Õ
Fn + T, then release and type A, E, I, O, U, or Y	Dieresis (Umlaut): Ä, Ë, Ì, Ö, Ù, Ý
Fn + Y, then release and type A	Nordic A-ring: Å
Fn + Done	Cancel
Fn + Del	Delete Item
Fn + Enter	Ok

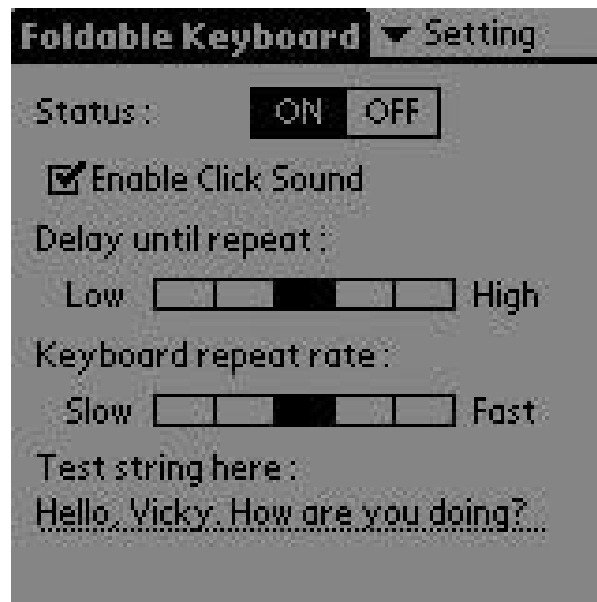
## Combination Keys (continued)

Fn + Cmd	Quick-access key: For example, Fn + Cmd, then release and press D brings the effect “delete”
Fn + Right arrow	Details
Fn + Left arrow	Show
Fn + Up arrow	Scroll Upward
Fn + Down arrow	Scroll Downward
Cmd + 0~9	Programmable Hot Key

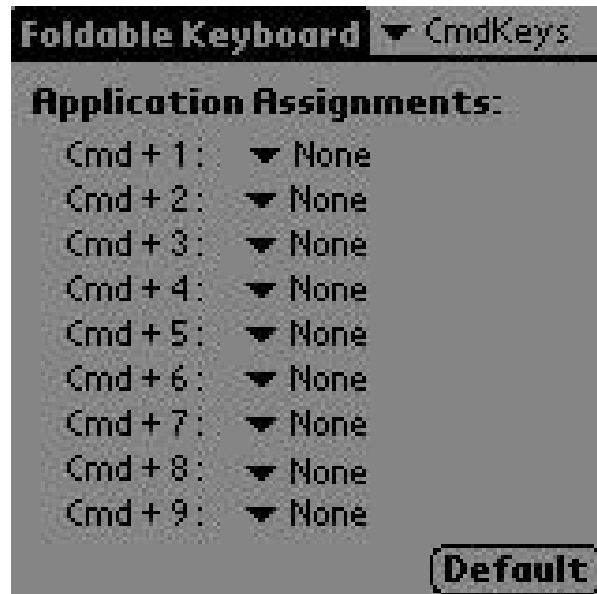


# Assigning Command Hot Keys

Tap the screen at the arrow next to “Setting”, and a pop-down setting menu allows you to customize your keyboard set hot key.



Tap the screen at the arrow next to “CmdKeys”, and a pop-down menu will allow you to define shortcuts.



# FCC/CE/Warranty Statement

## FCC Statement

### DECLARATION OF CONFORMITY WITH FCC RULES FOR ELECTROMAGNETIC COMPATIBILITY

We, Belkin Components, of 501 West Walnut Street, Compton, CA 90220, declare under our sole responsibility that the products:

F8P3502, F8H1501, F8Y1501

to which this declaration relates:

Comply with Part 15 of the FCC Rules. Operation is subject to the following two conditions: (1) this device may not cause harmful interference, and (2) this device must accept any interference received, including interference that may cause undesired operation.

## CE Declaration of Conformity

We, Belkin Components, declare under our sole responsibility that the F8P3502, F8H1501, and F8Y1501, to which this declaration relates, are in conformity with Generic Emissions Standard EN55022:1998 and with Generic Immunity Standard EN55024:1998.

## ICES Statement

This Class B digital apparatus complies with Canadian ICES-003. Cet appareil numérique de la classe B est conforme à la norme NMB-003 du Canada.

## Belkin Components Limited One-Year Product Warranty

Belkin Components warrants this product against defects in materials and workmanship for one year. If a defect is discovered, Belkin will, at its option, repair or replace the product at no charge provided it is returned during the warranty period, with transportation charges prepaid, to the authorized Belkin dealer from whom you purchased the product. Proof of purchase may be required.

This warranty does not apply if the product has been damaged by accident, abuse, misuse, or misapplication; if the product has been modified without the written permission of Belkin; or if any Belkin serial number has been removed or defaced.

THE WARRANTY AND REMEDIES SET FORTH ABOVE ARE EXCLUSIVE IN LIEU OF ALL OTHERS, WHETHER ORAL OR WRITTEN, EXPRESSED OR IMPLIED. BELKIN SPECIFICALLY DISCLAIMS ANY AND ALL IMPLIED WARRANTIES, INCLUDING, WITHOUT LIMITATION, WARRANTIES OF MERCHANTABILITY AND FITNESS FOR A PARTICULAR PURPOSE.

No Belkin dealer, agent, or employee is authorized to make any modification, extension, or addition to this warranty.

BELKIN IS NOT RESPONSIBLE FOR SPECIAL, INCIDENTAL, OR CONSEQUENTIAL DAMAGES RESULTING FROM ANY BREACH OF WARRANTY, OR UNDER ANY OTHER LEGAL THEORY, INCLUDING BUT NOT LIMITED TO LOST PROFITS, DOWNTIME, GOODWILL, DAMAGE TO OR REPROGRAMMING, OR REPRODUCING ANY PROGRAM OR DATA STORED IN OR USED WITH BELKIN PRODUCTS.

Some states do not allow the exclusion or limitation of incidental or consequential damages or exclusions of implied warranties, so the above limitations of exclusions may not apply to you. This warranty gives you specific legal rights, and you may also have other rights that vary from state to state.



**belkin.com**

***Belkin Components***

501 West Walnut Street  
Compton • CA • 90220 • USA  
Tel: 310.898.1100  
Fax: 310.898.1111

***Belkin Components, Ltd.***

Express Business Park  
Shipton Way • Rushden • NN10 6GL  
United Kingdom  
Tel: +44 (0) 1933 35 2000  
Fax: +44 (0) 1933 31 2000

***Belkin Components B.V.***

Starparc Building • Boeing Avenue 333  
1119 PH Schiphol-Rijk • The Netherlands  
Tel: +31 (0) 20 654 7300  
Fax: +31 (0) 20 654 7349

***Belkin Components, Ltd.***

7 Bowen Crescent • West Gosford  
NSW 2250 • Australia  
Tel: +61 (2) 4372 8600  
Fax: +61 (2) 4325 4277

© 2002 Belkin Components. All rights reserved. All trade names are registered trademarks of respective manufacturers listed.