

Read This First

Your Epson® Perfection® 2480 Limited Edition scanner package includes an additional CD-ROM. The *Supplemental Software* CD-ROM contains an updated version of Presto! BizCard®, the software that scans and organizes business cards and converts them to editable text.

BizCard works with Microsoft® Windows® 98SE, Me, 2000, and XP, and Apple® Macintosh® OS 9.1 to 9.2.2 and OS X 10.2.x and 10.3.x.

You must set up your scanner and install its software in this order:

1. Use the *Start Here* sheet and *Scanner Software* CD-ROM in your Epson Perfection 2480 Photo scanner box to set up your scanner, install its software, and connect it.
2. Use this instruction sheet and the *Supplemental Software* CD-ROM to install the updated BizCard software.
3. Follow the steps in the *Multi Photo and Business Card Feeder Setup Guide* to install the Multi Photo and Business Card Feeder on your scanner.

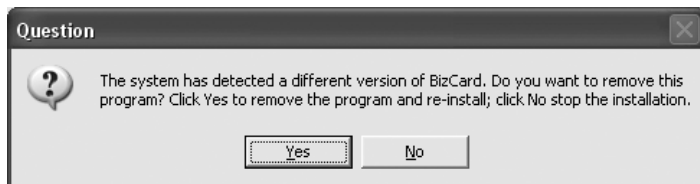
Caution: It's important that you install the scanner software from the CD-ROM in the Perfection 2480 Photo box *before* you install the software on the *Supplemental Software* CD-ROM. The software on the supplemental CD-ROM is a newer version and must be installed *last*.

Installing Updated BizCard for Windows

1. Insert the *Supplemental Software* CD-ROM in the CD-ROM or DVD drive. The Presto! BizCard installer appears.

Note: If the installer doesn't start automatically, open **My Computer**, open the **Epson** CD-ROM, open the **American** folder, and double-click **Setup.exe** to start it.

2. Click **Next**. You see this screen:



3. Click **Yes** and follow the on-screen instructions to uninstall the old version of BizCard.
4. If you see a message about removing an unneeded shared file, click **No to all** and follow the on-screen instructions. The old version of BizCard is uninstalled and the new version is installed. The installer exits automatically.
5. Remove and retain your CD-ROM.

Installing Updated BizCard for Macintosh

1. Insert the *Supplemental Software* CD-ROM in the CD-ROM or DVD drive.
2. Double-click the **Epson** CD-ROM icon, if necessary.
3. Double-click the **BCR for ESP English** icon. The Presto! BizCard installer appears.
4. Click **Continue** and follow the on-screen instructions to update your version of BizCard.
5. At the end, click **Quit**, then remove and retain your CD-ROM.

Epson is a registered trademark of Seiko Epson Corporation. Perfection is a registered trademark of Epson America, Inc.

General Notice: Other product names used herein are for identification purposes only and may be trademarks of their respective owners. Epson disclaims any and all rights in those marks.

© 2004 Epson America, Inc. 7/04

CPD-18762

Printed in USA