

Quick Setup Guide - AirStation Draft-N WZR-G300N

Nfiniti Wireless Router & AP

NFINITI

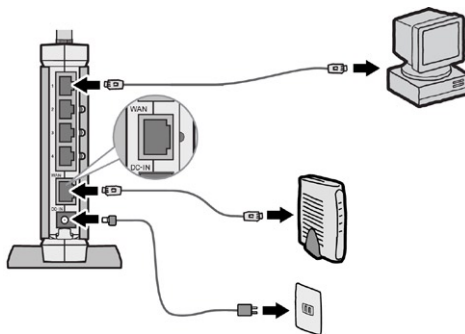


Package Contents

- WZR-G300N AirStation
- Base Stand
- AC Adapter and Power Cable
- CAT5 LAN cable
- Utility CD with Manual
- Quick Setup Guide
- Warranty Statement

Step 1: Connect Your Equipment

1. Make sure that all equipment is powered off, including the AirStation, PCs, and your cable or DSL modem.
2. Connect the Ethernet cable from your cable or DSL modem to the WAN port on your AirStation. The WAN port is the port closest to the power connector. This is the only port that will work for your internet connection.
3. Connect one or more PCs or workstations to any of the four LAN ports on the AirStation with RJ-45 Ethernet cables.
4. Power on the cable or DSL modem. Give it at least a minute to boot up.
5. Connect the power connector to the power port on the AirStation and to a surge protector or other source of power. Give the AirStation 60 seconds to boot.



Step 2: Configure Your Router

Next, you need to configure your router. This is done from a web browser on a computer connected to the router. We recommend that you use a wired computer that is plugged into the AirStation with an Ethernet cable for initial configuration.

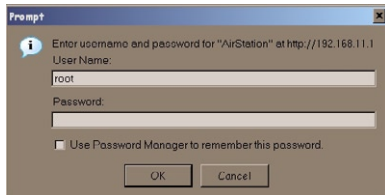
1. Launch the web browser on the computer that you're going to use to configure the AirStation.
NOTE: The computer used to configure the AirStation should be set to obtain an IP address automatically using a DHCP server.
2. Your web browser should automatically attempt to load a web page. If the default web page loads then the AirStation has automatically configured your Internet connection settings. Please skip to the next page if you have successfully connected to the Internet.

3. If the AirStation cannot automatically configure itself for your Internet Connection, then a window will open, prompting you to enter a User ID and Password.

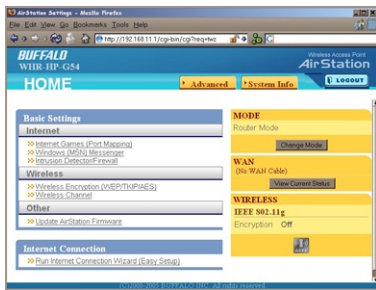
Enter **root** as the User name and leave the password field *blank*.

NOTE: If your web browser doesn't automatically connect you to the AirStation Configuration Utility, then type `http://192.168.11.1` in its address field, and press *Enter*.

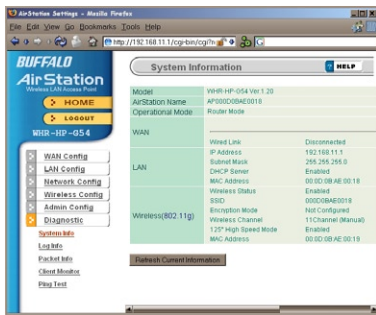
4. The AirStation will provide different configuration options depending on what it has auto-detected. Please manually enter your specific connection information. This information can be supplied by your Internet Service Provider; contact them for account specific information.



Step 3: Configure Wireless Settings



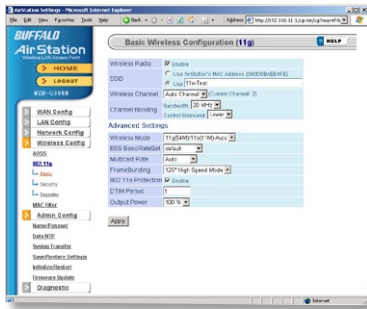
A. From a web browser or a PC on the network, log in to the AirStation Configuration Utility. Open a web browser, type `http://192.168.11.1` into the address field and press Enter. Enter `root` as the User name and leave the password field blank. This will take you to the Home page, where you can click on the System Info tab.



B. The *System Info* page gives you all the current information for your AirStation. When performing a survey with your wireless client device, please connect to the SSID provided on this System Info page.

Note: If you would rather use AOSS to automatically configure your wireless settings for you, turn to *page 6*.

Step 3: Configure Wireless Settings



C. The *Wireless Settings (Advanced -> Wireless -> 802.11n)* page allows you to control important aspects of your Wireless Router/AP:

SSID - The SSID is the name of your wireless network. This is what you see when performing a wireless scan or survey from a wireless client. You might want to change this to something easy to recognise, like “MYNETWRK”.

Channel Selection - You may find it necessary to change the AirStation’s channel to avoid interference with other 2.4 Ghz sources (such as cordless phones,

neighboring Wi-Fi networks, baby monitors, etc.). By default, the *Auto Channel* mode will attempt to locate the clearest channel possible.

Press the *Apply* button when you are finished making changes. If you made changes to the SSID, then your wireless clients will be disconnected and will need to be reconnected using the new SSID.

There are additional settings that should be considered, such as encryption, MAC address filtering, output power, etc. Please consult the User Manual on the AirNavigator CD-ROM for detailed information about other settings.

Alternative Step 3: Configure Wireless Settings with AOSS



AOSS (AirStation One-Touch Secure System) is a simple system for configuring your wireless network securely. If your router and your client device are installed and both support AOSS, then making a secure wireless connection between them is simple.

A. Push the AOSS button on the top of your router and hold it in for a few seconds. The AOSS light will begin to flash amber.

B. You now have two minutes to push the AOSS button on your client device and finish the connection. If your client device is a PC card, CardBus, USB, or PCI adapter, the AOSS button will probably be in its *Client Manager Software*. Check your client device's AOSS setup information for instructions on where to push or click the AOSS button.

After you've pressed both buttons, it will take about 30 seconds for the connection to complete. When it's finished, the AOSS light will glow a solid amber, without blinking. You now have a secure network connection!

Notes: If your client devices do not support AOSS, or you don't want to use it, turn to *page 4*.

Only one AOSS wireless client adapter can be configured with the AOSS router at a time. The buttons will need to be re-pressed to connect each additional AOSS wireless client adapter.

Additional non-AOSS wireless devices can be connected to your wireless network by connecting them manually. The encryption information is available in the AirStation Web Configuration Utility in the AOSS section. Please consult the User Manual on the AirStation CD-ROM for more information.

After you push the first AOSS button, you have 2 minutes to push the second AOSS button. If you run out of time, just push the first AOSS button again.

Congratulations! Your AirStation is installed and the basic setup has been configured. For advanced settings and more detailed information, consult the User Manual, located on your AirNavigator CD-ROM.

Buffalo Technology Technical Support

Buffalo Technology offers Technical Support between the hours of 9am-6pm (GMT) Monday to Thursday and 9am-4:30pm (GMT) Friday for this product. Customers in Europe can obtain Technical Support using the following information:

- ▶ Online Help Available on the enclosed AirNavigator CD.
- ▶ Web www.buffalo-technology.com
- ▶ E-mail helpdesk@buffalo-technology.ie
- ▶ Telephone UK only: 08712 50 12 60
Elsewhere: +353 61 708 050

The constantly evolving state of wireless products and operating systems requires Buffalo Technology to occasionally release updated software to take advantage of new technologies and to comply with industry standards. For the most recent software, firmware, driver, and technical whitepaper releases available, please visit the Buffalo Technology website: www.buffalo-technology.com

Europe – EU Declaration of Conformity

This device complies with the essential requirements of the R&TTE Directive 1999/5/EC. The following test methods have been applied in order to prove presumption of compliance with the R&TTE Directive 1999/5/EC:

- ▶ EN 60950-1: 2001
Safety of Information Technology Equipment
- ▶ EN 300328 V1.6.1: 2004
Technical requirements for spread-spectrum radio equipment
- ▶ EN 301489-1 V1.4.1: 2002, EN301 489-17 V1.2.1: 2002
EMC requirements for spread-spectrum radio equipment.
- ▶ EN 50371: 2002

CE 0560   

Intended use

This device is a 2.4 GHz wireless LAN transceiver, intended for indoor home and office use in all EU and EFTA member states.

EU Countries intended for use

This device is intended for indoor Home and office use in the following countries:
Austria, Belgium, Germany, Denmark, Spain, Greece, France, Finland, Italy, Ireland,

Luxembourg, The Netherlands, Portugal, Sweden, United Kingdom, Cyprus, Czech Republic, Estonia, Hungary, Latvia, Lithuania, Malta, Poland, Slovak Republic and Slovenia.

The device is also authorised for use in all EFTA member states Iceland, Liechtenstein, Norway and Switzerland.

EU countries not intended for use

None

Potential restrictive use

This device is a 2.4 GHz wireless LAN transceiver, intended for indoor home and office use in all EU and EFTA member states, except in France, Belgium and Italy where restrictive use applies.

In Italy the end-user should apply for a license at the national spectrum authorities in order to obtain an authorization to use the device for setting up outdoor radio links.

In Belgium there is a restriction in outdoor use. The frequency range in which outdoor operation in Belgium is permitted is 2460 – 2483.5 MHz.

This device may not be used for setting up outdoor radio links in France. For more information see <http://www.anfr.fr/> and/or <http://www.art-telecom.fr>

MEMO

BUFFALO WARRANTY STATEMENT

Buffalo products come with a 2-year limited warranty from the date of purchase.

Buffalo Technology warrants in good operating condition for the warranty period. This warranty does not include non-Buffalo Technology installed components. If the Buffalo product malfunctions during the warranty period, Buffalo Technology will, at its discretion, repair or replace the product at no charge, provided the product has not been subjected to misuse, abuse or non-Buffalo Technology authorized alterations, modifications or repairs. When returning a product, include your original proof of purchase. Return requests cannot be processed without proof of purchase. Shipment of returned product to Buffalo Technology is the responsibility of the purchaser. All expressed and implied warranties for the Buffalo product line including, but not limited to, the warranties of merchantability and fitness for a particular purpose, are limited in duration to the above period.

Under no circumstances shall Buffalo Technology be liable in any way to the user for damages, including any lost profits, lost savings or other incidental or consequential damages arising out of the use of, or inability to use, the Buffalo products.

Buffalo Technology reserves the right to revise or update its products, software, or documentation without obligation to notify any individual or entity.

Important Notice

Please have your proof of purchase receipt to get warranty support. All defective products shall be returned with a copy of proof of purchase.

In no event shall Buffalo Technology's liability exceed the price paid for the product from direct, indirect, special, incidental, or consequential damages resulting from the use of the product, its accompanying software, or its documentation. Buffalo Technology does not offer refunds for any product.

BUFFALO TECHNOLOGY UK LTD

176, Buckingham Avenue, Slough, Berkshire, SL1 4RD United Kingdom

Tel: +44 (0) 1753 555000

Fax: +44 (0) 1753 535420

E-mail: sales@buffalo-technology.com

Copyright © 2006 Buffalo Technology UK, Ltd. All Rights Reserved. - Buffalo Technology UK, Ltd. is part of BUFFALO INC., the global manufacturers of IT peripherals, including memory, networking, and multimedia products, inside many of the world's computers. All trademarks are the property of their respective owners.