



**BIPAC- 8500 / 8520**

**SHDSL VPN Firewall Bridge / Router**

**Quick Start Guide**





**For more detailed instructions on configuring and using the SHDSL Firewall Bridge / Router, please refer to the on-line manual.**

## Package Contents

- BIPAC-8500 / 8520 SHDSL Bridge / Router
- CD-ROM containing the online manual
- RJ-11 SHDSL / telephone Cable
- Ethernet (CAT-5 LAN) Cable
- Console (PS2-RS232) Cable
- AC-DC power adapter (12VDC, 1A)
- This Quick Start Guide



### **Warning**

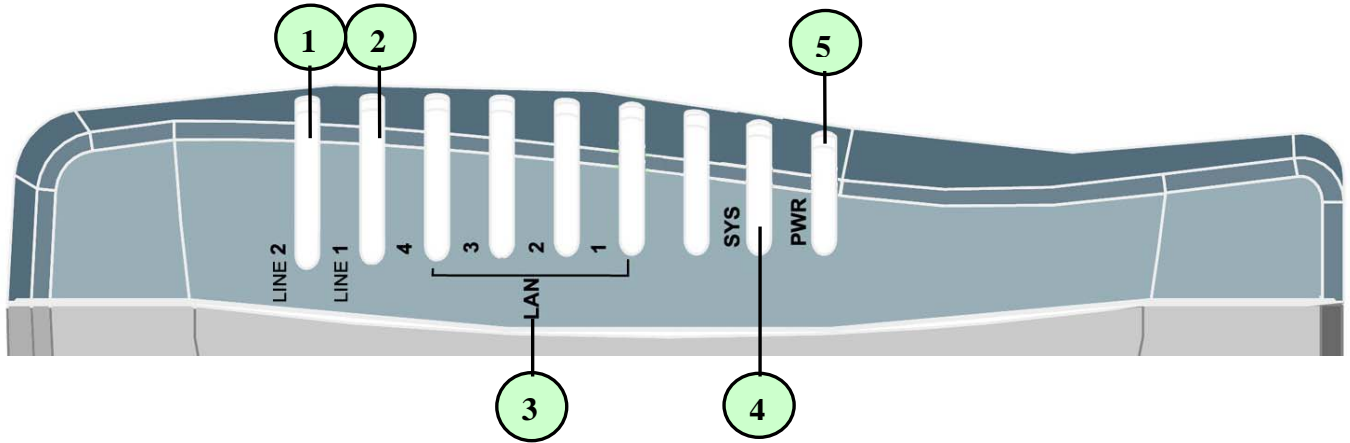
- ✓ Do not use the BIPAC-8500 / 8520 in high humidity or high temperatures.
- ✓ Do not use the same power source for the BIPAC-8500 / 8520 as other equipment.
- ✓ Do not open or repair the case yourself. If the BIPAC-8500 / 8520 is too hot, turn off the power immediately and have it repaired at a qualified service center.



### **Attention**

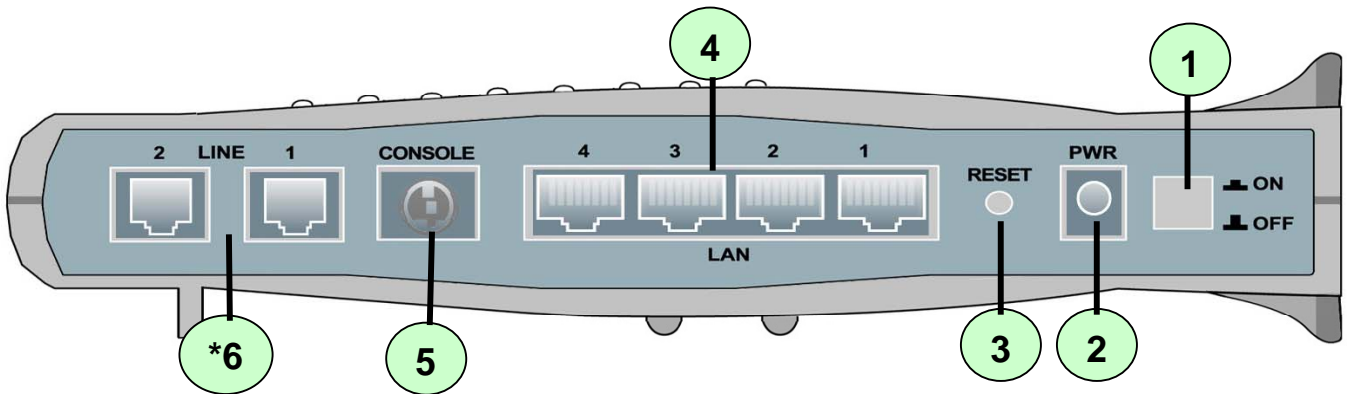
- ✓ Place the BIPAC-8500 / 8520 on a stable surface.
- ✓ Only use the power adapter that comes with the package. Using a different voltage rating power adaptor may damage the router.

## The Front LEDs



LED		Meaning
1	LINE 1 & 2	Lit when successfully connected to SHDSL line and it is synchronized.
2		
3	LAN Port 1X — 4X (RJ-45 connector)	Lit when connected to an Ethernet device. Green for 100Mbps; Orange for 10Mbps. Blinking when data is Transmitted / Received.
4	SYS	Lit when the system is ready.
5	PWR	Lit when power is ON.

## The Rear Ports



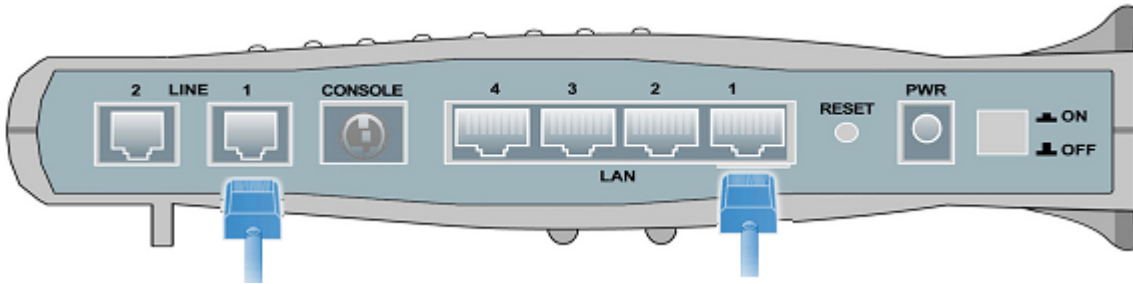
**NOTE:**

\* Only the BIPAC-8520 has two Line jack ports. BIPAC-8500 has one.

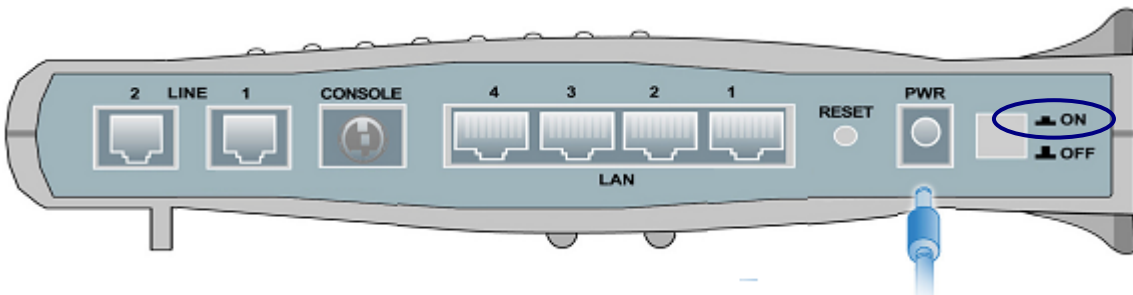
Port		Meaning
1	Power Switch	Power ON/OFF switch
2	PWR	Connect the supplied power adapter to this jack.
3	RESET	After the device is powered on, press it to reset the device or restore to factory default settings. <b>0-3 seconds:</b> reset the device <b>6 seconds above:</b> restore to factory default settings (this is used when you can not login to the router, e.g. forgot the password)
4	LAN 1X — 4X (RJ-45 connector)	Connect a UTP Ethernet cable (Cat-5 or Cat-5e) to one of the four LAN ports when connecting to a PC or an office/home network of 10Mbps or 100Mbps.
5	CONSOLE	Connect a PS2/RS-232 cable to this port when connecting to a PC's RS-232 port (9-pin serial port).
6	LINE 1X — 2X (RJ-11 connector)	Connect the supplied RJ-11 ("telephone") cable to this port when connecting to the A SHDSL line.

## Connecting Your SHDSL Bridge / Router

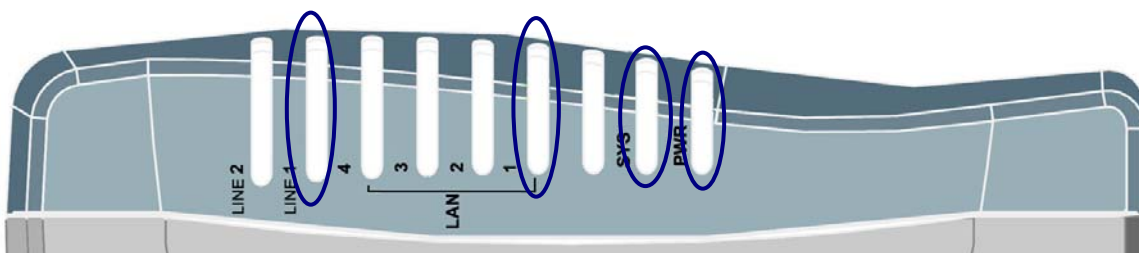
1. Connect the Router to a **LAN** (Local Area Network) and the SHDSL **LINE**.



2. Power on the device.

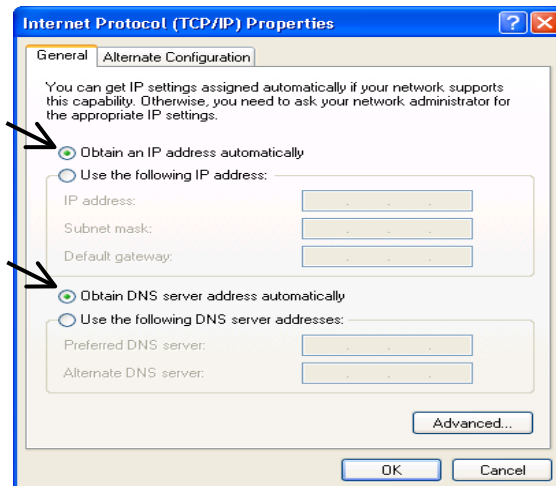
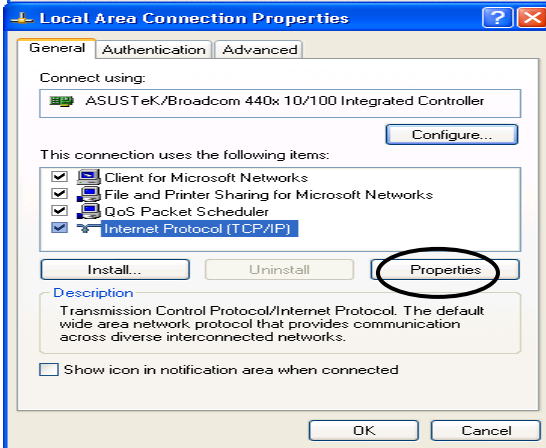
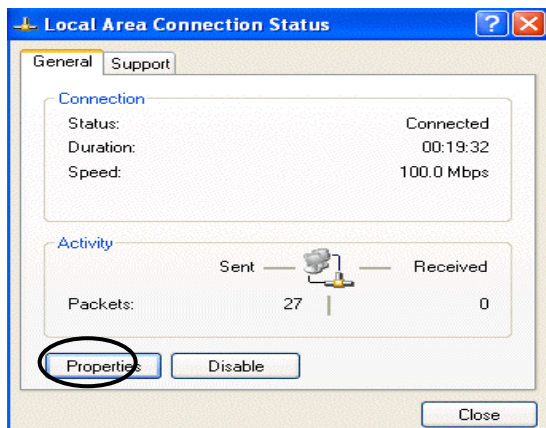


3. Make sure the **PWR** and **SYS** LEDs are lit steadily and that the **relevant LAN** and **LINE** LED are lit.



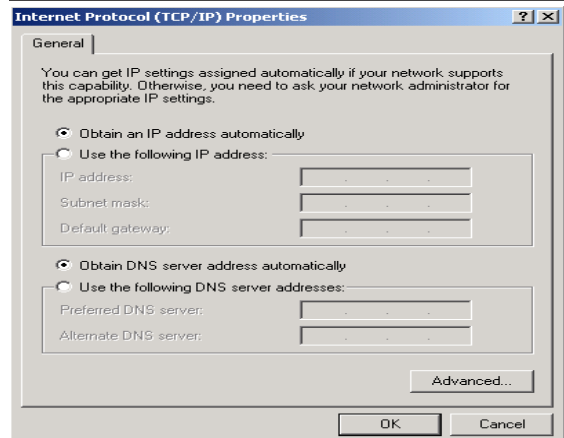
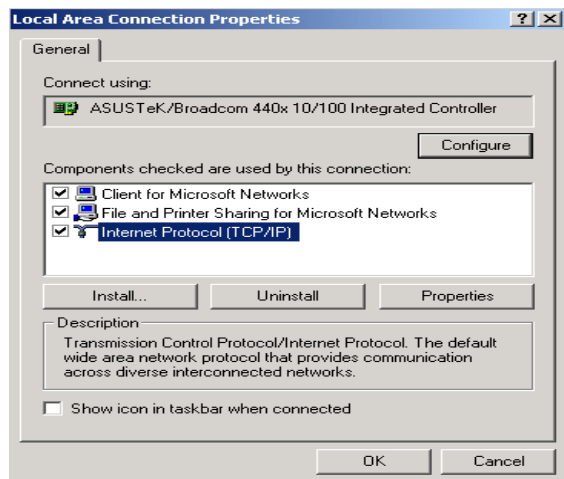
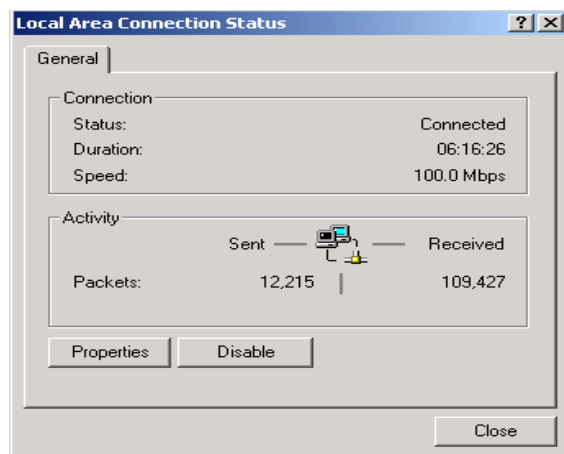
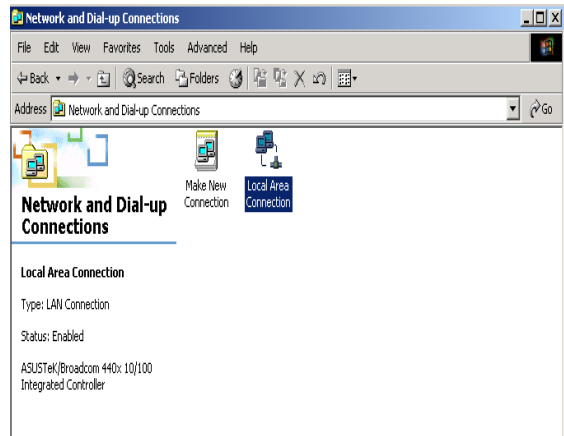
## Configuring PC in Windows XP

1. Go to **Start / Control Panel (in Classic View)**. In the Control Panel, double-click on **Network Connections**
2. Double-click **Local Area Connection**.
3. In the **Local Area Connection Status** window, click **Properties**.
4. Select **Internet Protocol (TCP/IP)** and click **Properties**.
5. Select the **Obtain an IP address automatically** and the **Obtain DNS server address automatically** radio buttons.
6. Click **OK** to finish the configuration.



# Configuring PC in Windows 2000

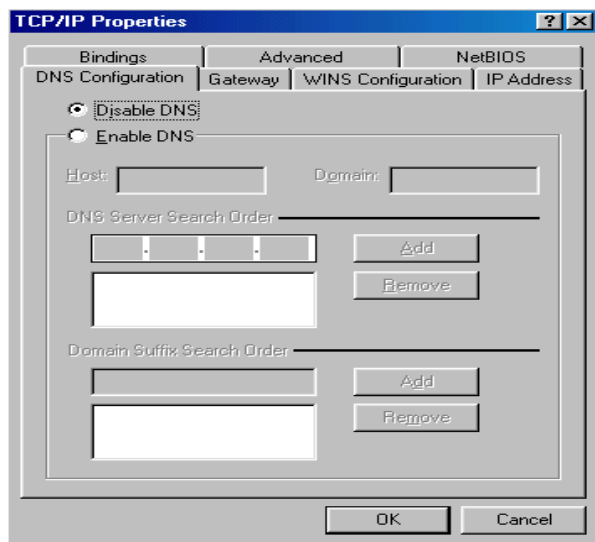
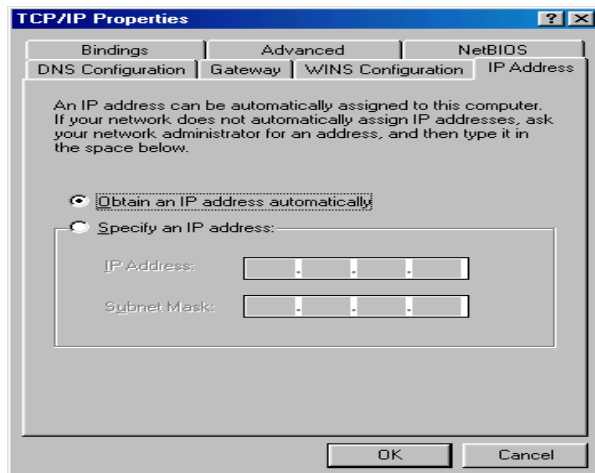
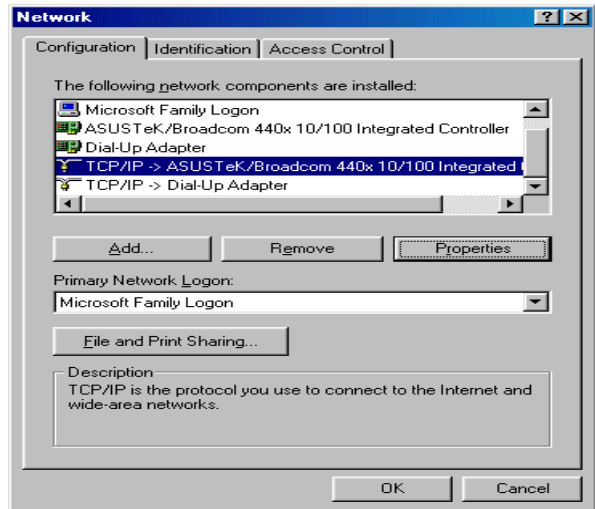
1. Go to **Start / Settings / Control Panel**. In the Control Panel, double-click on **Network and Dial-up Connections**.
2. Double-click **Local Area Connection**.
3. In the **Local Area Connection Status** window click **Properties**.
4. Select **Internet Protocol (TCP/IP)** and click **Properties**.
5. Select the **Obtain an IP address automatically** and the **Obtain DNS server address automatically** radio buttons.
6. Click **OK** to finish the configuration.





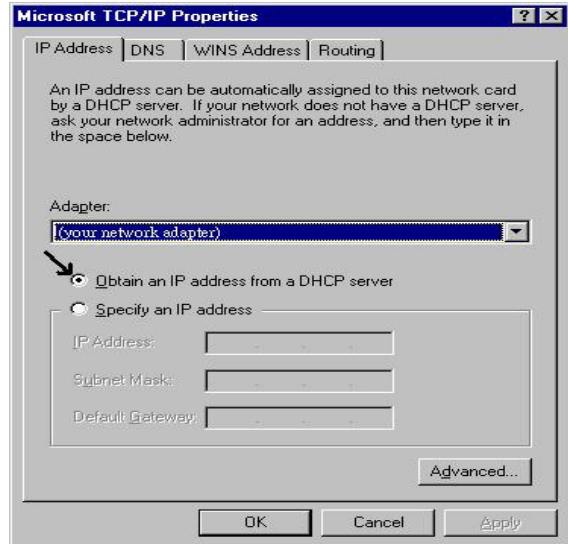
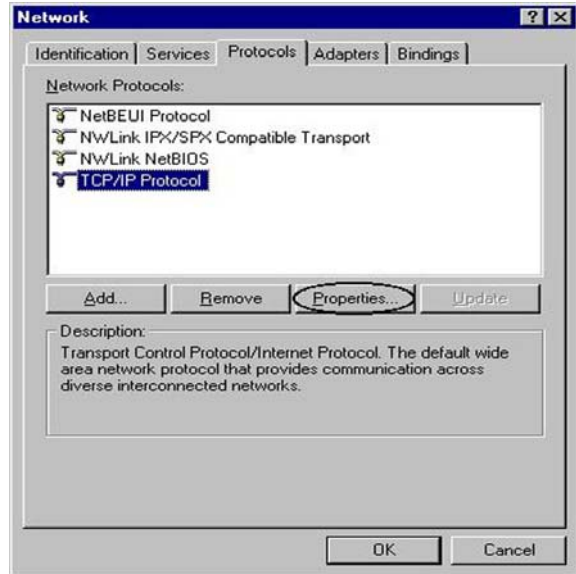
## Configuring PC in Windows 98/Me

1. Go to **Start / Settings / Control Panel**. In the Control Panel, double-click on **Network** and choose the **Configuration** tab.
2. Select **TCP/IP -> NE2000 Compatible**, or the name of your Network Interface Card (NIC) in your PC.
3. Select the **Obtain an IP address automatically** radio button.
4. Then select the **DNS Configuration** tab.
5. Select the **Disable DNS** radio button and click **OK** to finish the configuration.



## Configuring PC in Windows NT4.0

1. Go to **Start / Settings / Control Panel**. In the Control Panel, double-click on **Network** and choose the **Protocols** tab.
2. Select **TCP/IP Protocol** and click **Properties**.
3. Select the **Obtain an IP address from a DHCP server** radio button and click **OK**.



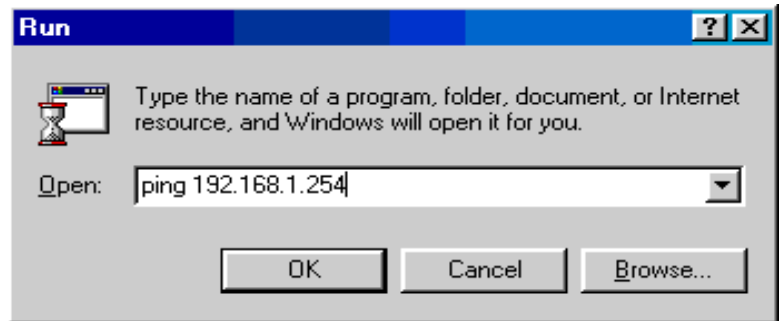
## Configuring Your SHDSL VPN Firewall Bridge / Router



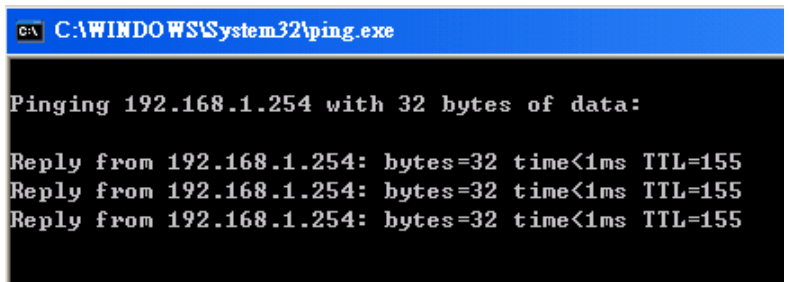
*To configure this device, you must have IE 5.0 / Netscape 4.5 or above installed*

### ■ Verifying Your Local Network Connection with the Device

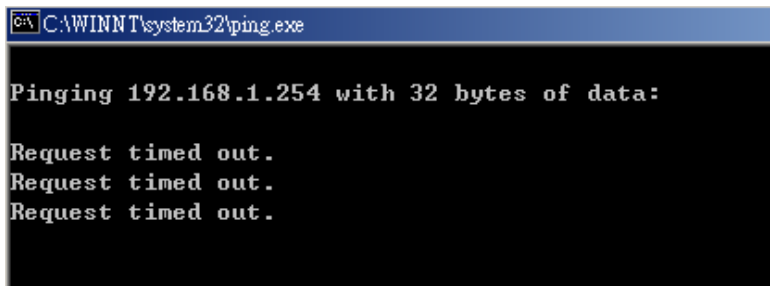
To see if this SHDSL Router is visible on the local network, go to **Start / Run**. In the Run dialog box, type “**ping 192.168.1.254**” then press **OK**.



A command prompt window will pop out. If your ping is successful which means your local network is able to reach to the device, then the command prompt window will close up automatically.



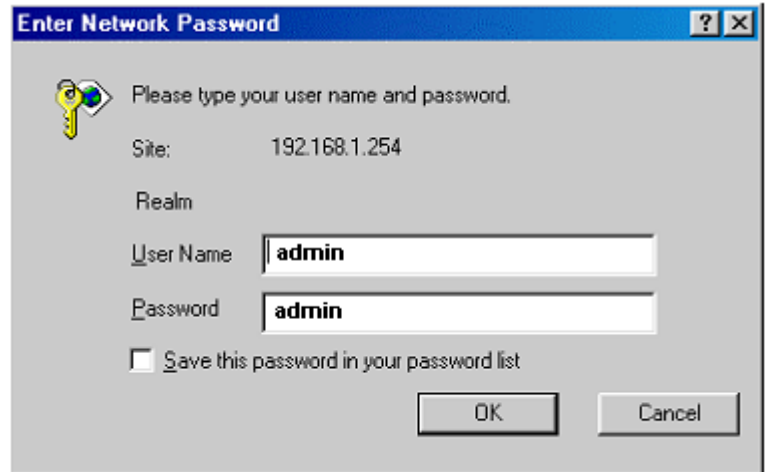
Connection fails, when you see “**Request timed out**” in the command prompt window. You may need to check your set up.



## ■ Connecting to the Bridge / Router

Open the web browser and type <http://192.168.1.254> in the browser's address box. This number is the default IP address for this router. Press **Enter**.

A user name and password window will appear. **The default User Name and Password are "admin" and "admin"**. Press **OK** to logon to the router



## Product Support and Contact Information

Most problems can be solved by referring to the **Troubleshooting** section in the User's Manual. If you cannot resolve the problem with the **Troubleshooting** chapter, please contact the dealer where you purchased this product.

For further assistances with the product, please feel free to contact and visit us at:

<http://www.billion.com>