

P-660N-T1A

Quick Start Guide

802.11n Wireless ADSL2+ Gateway

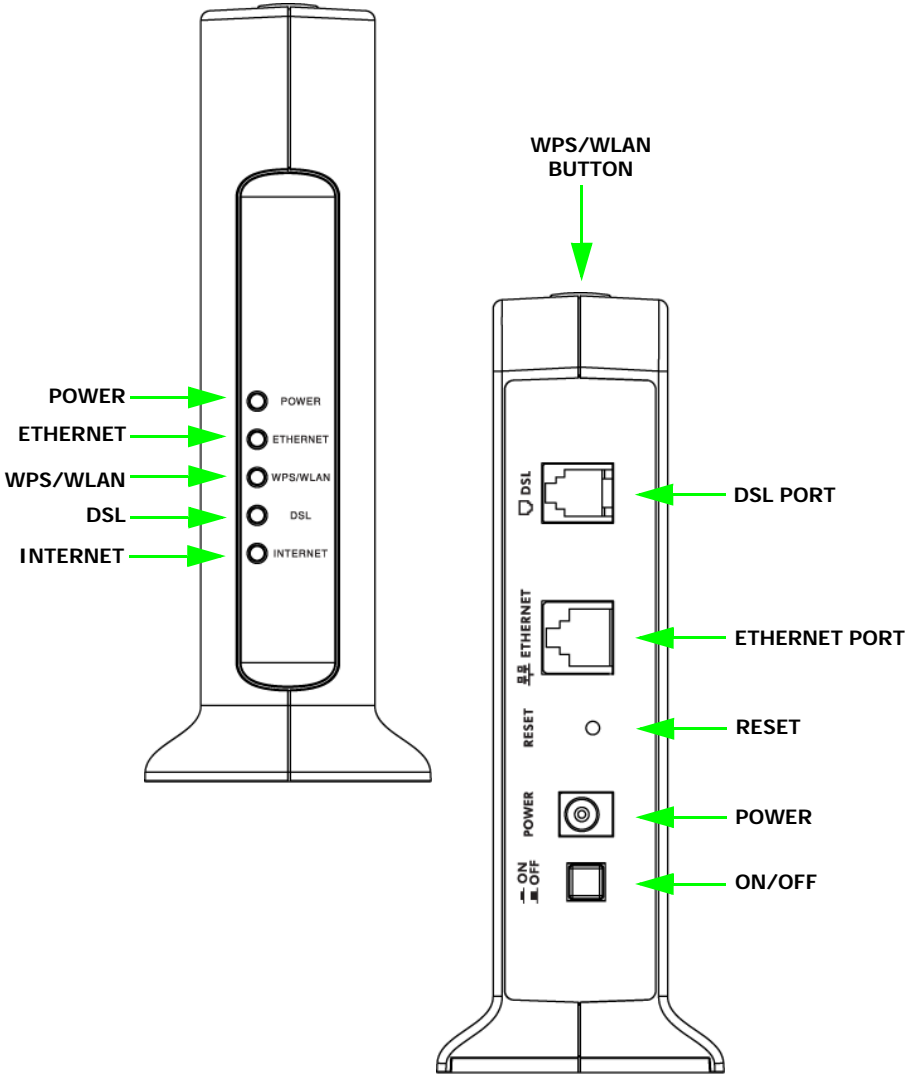
Firmware v3.40
Edition 1, 7/2010

DEFAULT LOGIN DETAILS

IP Address:	http://192.168.1.1
User Password:	1234

The logo for ZyXEL, featuring the brand name in a bold, blue, sans-serif font. The 'Z' and 'Y' are connected, and the 'X' is stylized with a diagonal slash.

Device Panels

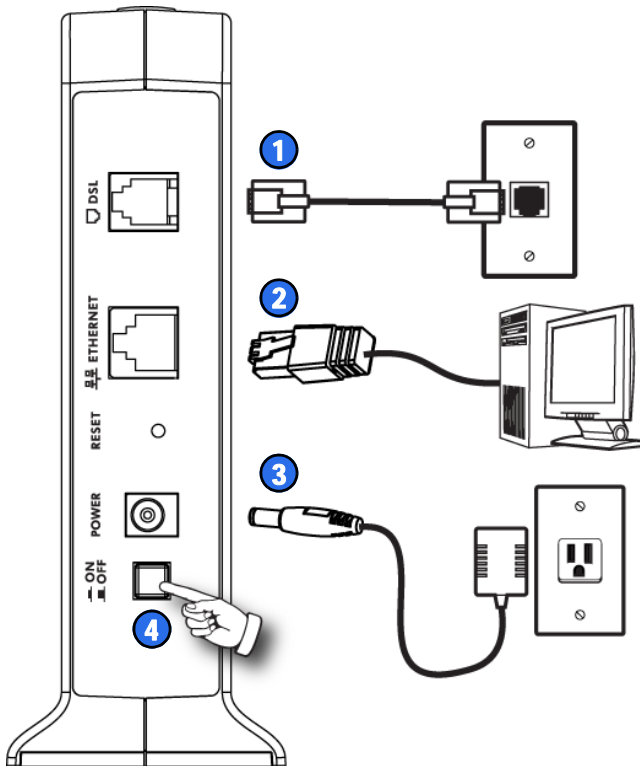


Overview

The P-660N-T1A is an ADSL router with IEEE 802.11n wireless capability. It allows both wired and wireless clients to safely access the Internet.

Hardware Connections

This section shows you how to set up your P-660N-T1A.

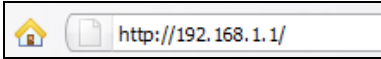


1. **DSL:** Use a telephone wire to connect your P-660N-T1A's **DSL** port to a telephone jack (or to a splitter, if one is already installed).
2. **LAN:** Use an Ethernet cable to connect a computer to the **LAN** port for initial configuration and/or Internet access.
3. **POWER:** Use the power adaptor provided with your P-660N-T1A to connect an appropriate power source to the **POWER** socket. Make sure the power source is on.
4. Push the **ON/OFF** button to the **ON** position. Look at the lights on the front panel.
 - The **POWER** light blinks while your P-660N-T1A starts up and stays on once it is ready. The **DSL** light is on when the P-660N-T1A has a DSL connection, and the **WLAN** light is on when the wireless LAN is ready. The **INTERNET** light is on when you are able to access the Internet and blinks when the P-660N-T1A is sending or receiving data.
 - The **LAN** light stays on if the **LAN** port is properly connected and blinks when there is traffic.

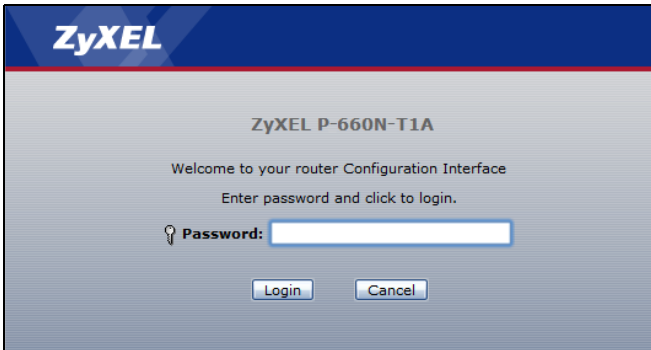
If any of these lights are not on, check your connections and inspect your cables for damage. If the lights are still off, contact your local vendor.

Internet and Wireless Setup

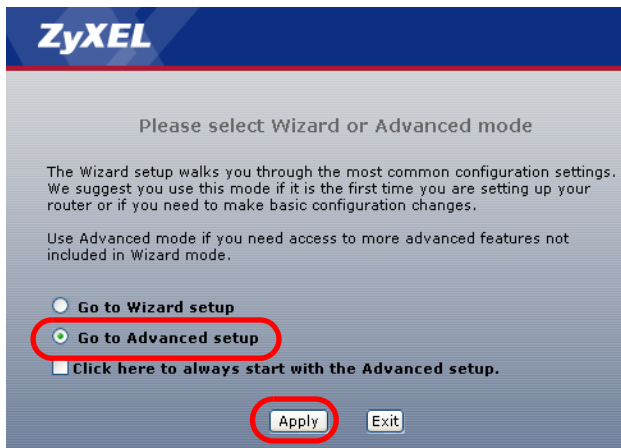
1. In your browser, go to <http://192.168.1.1>.



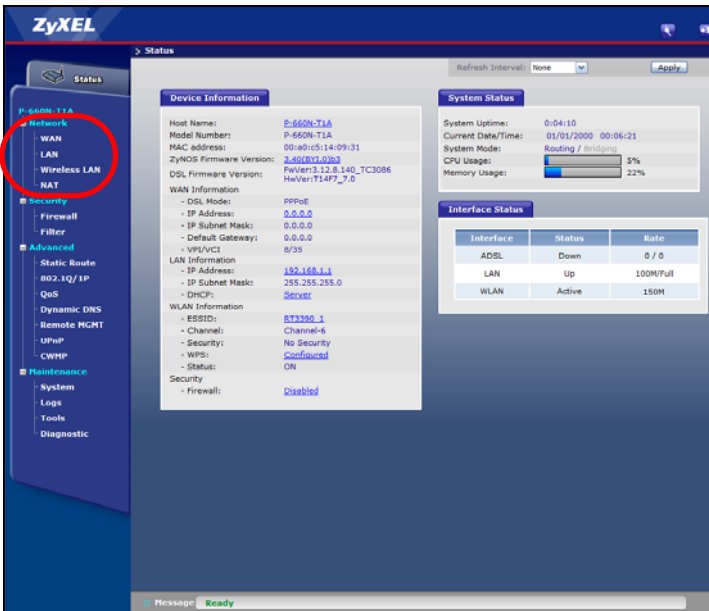
2. Enter the default password **1234** and click **Login**.



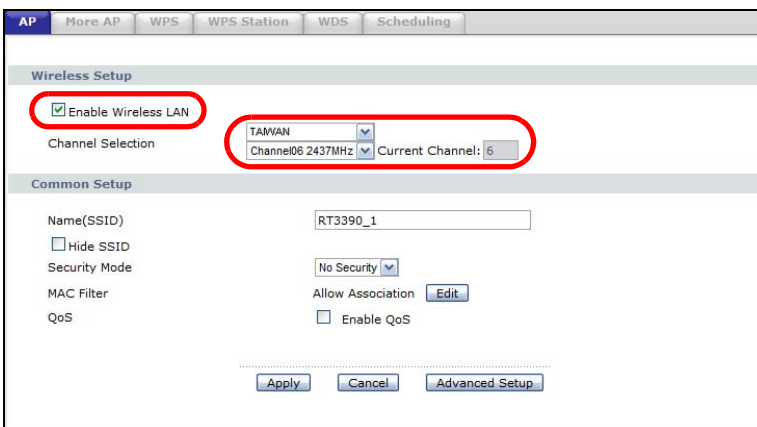
3. Select **Go to Advanced Setup** then click **Apply**.



4. The **Status** screen displays. Open the **Network > Wireless LAN > AP** screen.



5. Select **Enable Wireless LAN**, then set the country in which your P-660N-T1A operates.



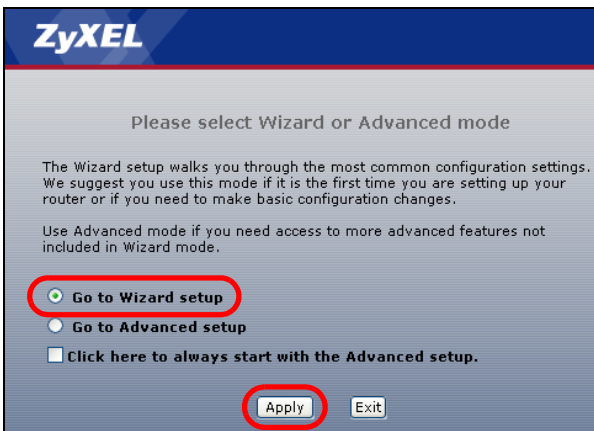
- Next, select a channel from the **Channel Selection** list. Channels available vary according to the country you select.
- Click **Apply** to save your settings.
- Type <http://www.zyxel.com> in your web browser's address bar and press [Enter].

Your P-660N-T1A tries to detect your Internet connection. Wait for the P-660N-T1A to finish. If any other screens appear, follow the directions on the screen.

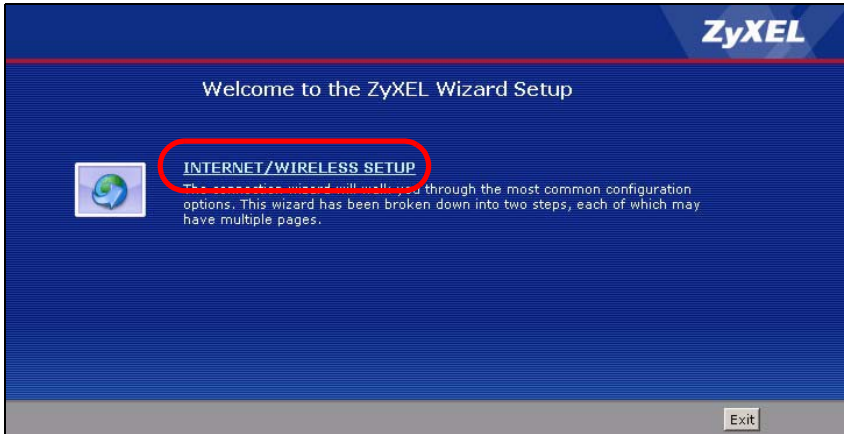
If the web page opens correctly then your P-660N-T1A is ready for you to use. Skip the rest of this procedure.

If the web page does not open, follow the rest of the steps. You should have the information provided by your ISP.

- Return to the Web Configurator at <http://192.168.1.1>.
- Click **Go to Wizard setup**. Then, click **Apply**.



11. Click **INTERNET/WIRELESS SETUP**. Wait while your P-660N-T1A tries to detect your DSL connection.



12. Follow the directions in the wizard. Do not change default settings if your ISP did not provide information.

Troubleshooting

1. If you cannot access the web configurator using Internet Explorer in Windows XP or Windows Server 2003, make sure you allow pop-up windows, JavaScript and Java permissions or set the Internet security level lower than **High** in Internet Explorer (in Internet Explorer, click **Tools > Internet Options > Security > Custom Level...**). See the appendix in the User's Guide for more information.
2. If you cannot access the Internet when your computer is connected to the **LAN** port, follow these steps.
 - a. Check the lights on the front panel. If they are different from what is described on page 4, make sure the P-660N-T1A is correctly

