

P-660HN-TxA

Quick Start Guide

802.11n Wireless ADSL2+ 4-port Gateway

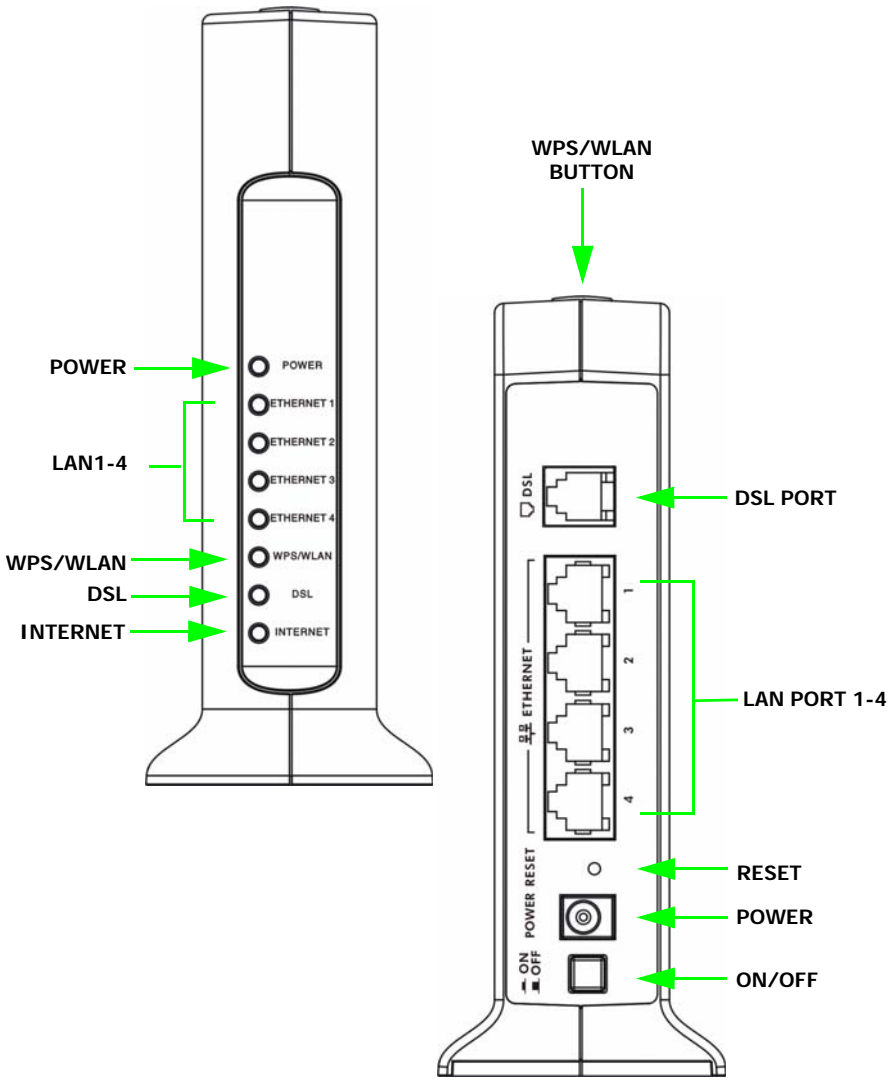
Firmware v3.40
Edition 1, 6/2010

DEFAULT LOGIN DETAILS

IP Address:	http://192.168.1.1
Password:	1234

The logo for ZyXEL, featuring the brand name in a bold, blue, sans-serif font. The 'Z' and 'Y' are significantly larger and more stylized than the other letters.

Device Panels

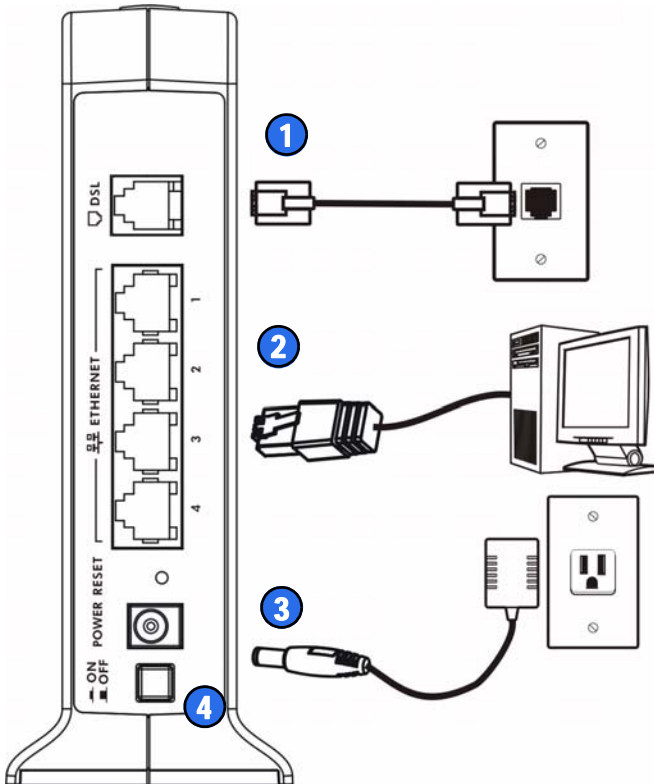


Overview

The P-660HN-TxA is an ADSL router with a four-port built-in Ethernet switch and IEEE 802.11n wireless capability. The P-660HN-TxA allows wired and wireless clients to safely access the Internet.

Hardware Connections

This section shows you how to set up your P-660HN-TxA.

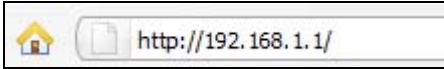


1. **DSL:** Use a telephone wire to connect your P-660HN-TxA's **DSL** port to a telephone jack (or to a splitter, if one is already installed).
2. **LAN:** Use an Ethernet cable to connect a computer to a **LAN** port for initial configuration and/or Internet access.
3. **POWER:** Use the power adaptor provided with your P-660HN-TxA to connect an appropriate power source to the **POWER** socket. Make sure the power source is on.
4. Push the **ON/OFF** button to the **ON** position. Look at the lights on the front panel.
 - The **POWER** light blinks while your P-660HN-TxA starts up and stays on once it is ready. The **DSL** light is on when the P-660HN-TxA has a DSL connection, and the **WLAN** light is on when the wireless LAN is ready. The **INTERNET** light is on when you are able to access the Internet and blinks when the P-660HN-TxA is sending or receiving data.
 - Each **LAN** light stays on if the corresponding **LAN** port is properly connected and blinks when there is traffic.

If any of these lights are not on, check your connections, and inspect your cables for damage. If the lights are still off, contact your local vendor.

Internet and Wireless Setup

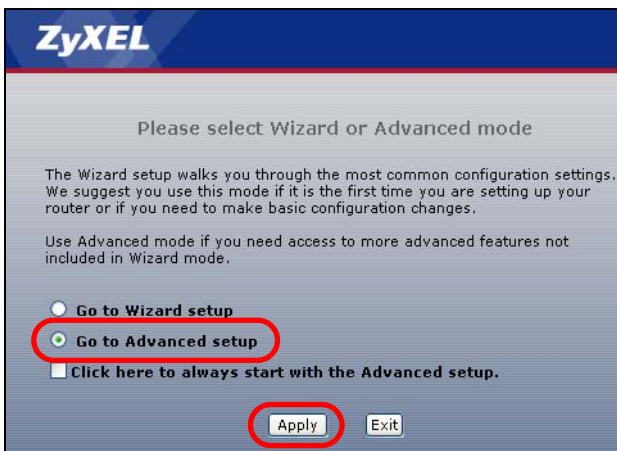
1. In your browser, go to <http://192.168.1.1>.



2. Enter the default password **1234** and click **Login**.



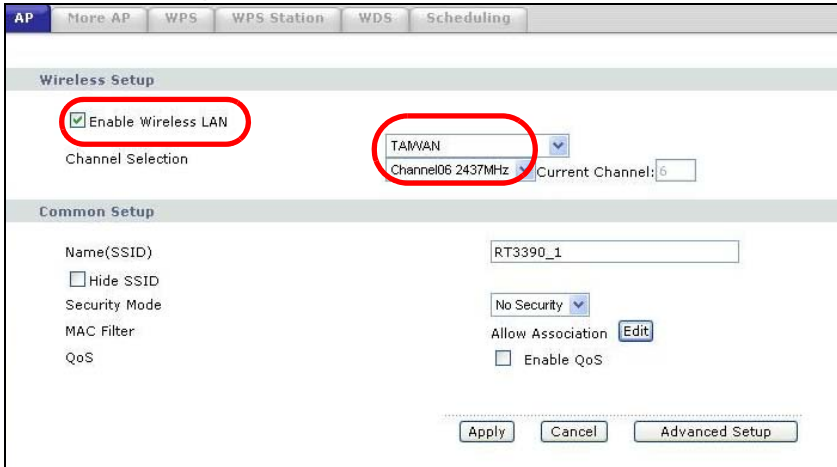
3. Select **Go to Advanced Setup** then click **Apply**.



4. The **Status** screen displays. Open the **Network > Wireless LAN > AP** screen.



5. Select **Enable Wireless LAN**, then select the country in which your P-660HN-TxA operates.



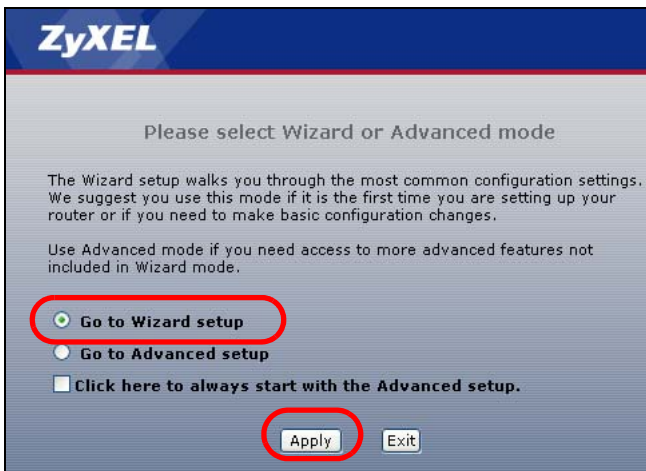
- Next select a channel from the **Channel Selection** list. Channels available vary according to the country you select.
- Click **Apply** to save your settings.
- Type <http://www.zyxel.com> in your web browser's address bar and press [Enter].

Your P-660HN-TxA tries to detect your Internet connection. Wait for the P-660HN-TxA to finish detection. If any other screens appear, follow the directions in the screen.

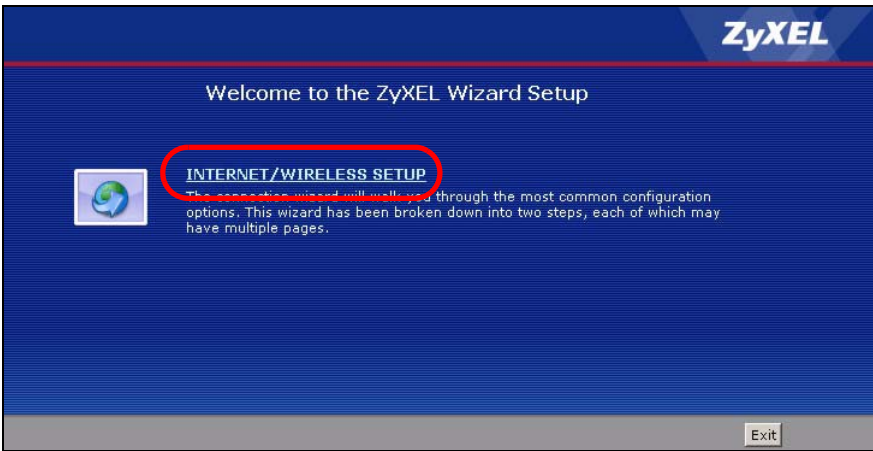
If the web page opens correctly, your P-660HN-TxA is ready for you to use. Skip the rest of this procedure.

If the web page does not open, follow the rest of the steps. You should have the information provided by your ISP.

- Return to the Web Configurator at <http://192.168.1.1>.
- Click **Go to Wizard setup**. Then, click **Apply**.



11. Click **INTERNET/WIRELESS SETUP**. Wait while your P-660HN-TxA tries to detect your DSL connection.



12. Follow the directions in the wizard. Do not change default settings if your ISP did not provide information.

Troubleshooting

1. If you cannot access the web configurator using Internet Explorer in Windows XP or Windows Server 2003, make sure you allow pop-up windows, JavaScripts and Java permissions or set the Internet security level lower than **High** in Internet Explorer (in Internet Explorer, click **Tools > Internet Options > Security > Custom Level...**). See the appendix in the User's Guide for more information.
2. If you cannot access the Internet when your computer is connected to the **LAN** port, follow these steps.
 - a. Check the lights on the front panel. If they are different from what is described on page 4, make sure the P-660HN-TxA is correctly

connected. If the lights are still different, turn off the device, wait a few seconds, and turn it on again.

- b. Follow the steps on page [8](#) again. Make sure you enter the correct information. For example, if your account has a user name and password, make sure you type it correctly. In addition, if you are not sure which encapsulation your ISP uses, contact your ISP.
 - c. If you are using a new Internet account, contact your ISP to make sure it is active.
 - d. If you still have problems, see **Troubleshooting** in the User's Guide.
3. If you cannot access the Internet using the wireless network, follow these steps.
 - a. On a computer in the wireless network, open your browser, and go to <http://192.168.1.1>. If you see the login screen, follow suggestions [a](#) - [d](#) above. If you do not, go to the next step.
 - b. Make sure your P-660HN-TxA and your computer are using the same wireless and wireless security settings.

Viewing Certification(s)

- Go to www.zyxel.com.
- Select your product from the drop-down list box on the ZyXEL home page to go to that product's page.
- Select the certification you wish to view from this page.

