

# ZyXEL



## 3-in-1 Wireless HomePlug AV Router

**200Mbps**  
HomePlug



- Data Rates of up to 200 Mbps Over Powerline
- Configurable Powerline for Internet or Home Network Connections
- Super G Technology is the Optimal Wireless Range and Performance of up to 108Mbps Data Rate
- HomePlug Instant Encrypt Button to Secure Your Powerline Network
- Multi-colored LED to Indicate Data Transmission Rates Over Powerline

### Benefits

#### No New Wire Required for House-Wide Network

ZyXEL NBG318S v2 features both wireless and HomePlug AV connectivity. You can always connect to the Internet wirelessly, even on some spots that couldn't be reached by the wireless network. With existing power lines, reliable connection can be provided through wall plugs.

Now you can plan your home network, use the power lines as the network backbone, and then deploy the NBG318S v2 as the broadband extender to reach every corner in the house.

#### Data Transmission Rates of Up to 200 Mbps

The NBG318S v2 is an extension solution for your house to be completely networked with existing power lines. Thanks to the advanced HomePlug AV technology, the NBG318S v2 is capable of transmitting data at up to 200 Mbps. It allows you to share network resources and enjoy Internet access through secure high-speed data connection over the house power lines you already have.

#### High Speed and QoS for High Definition Video Streams

The inherited advanced QoS features make the NBG318S v2 ideal access tool for service providers to deliver "triple play" multimedia services such as high-quality digital video streams, high-speed Internet access and voice services.

Super G Wireless  
Homeplug AV Router

NBG318S v2



# GATEWAY



## Advanced 128-bit AES Security Protection

With the 128-bit Data Encryption Security (AES) feature, the NBG318S v2 provides secure network connection for Internet access and resource sharing. Just leave the sweats to the NBG318S v2, sit back and enjoy the fast surfing experience as well as secure file transfer over the Internet.

## High Speed Wireless Access

Taking advantage of ZyXEL's Wireless Super G Technology, users can achieve data rates of up to 108 Mbps, which doubles the speed of the conventional 802.11g standard. With the astounding performance, users can handle the fast data transfer for streaming applications like video or audio broadcasting effortlessly.

## Specifications

### System Specifications

- MBM v2 with Automatic Traffic Classifier
- Powerline as WAN or LAN port
- PPPoE/DHCP/PPTP with MS CHAP v1/v2
- Logging
- Web configurator
- Many to one NAT
- SIP ALG
- DOS/DDOS SPI Firewall
- Port Triggering
- DDNS
- WPA/WPA2 support
- 802.11e/WMM
- LED throughput indication
- Encrypt button for secure HomePlug network

### Hardware Specifications

- 3-port 10/100 Mbps Ethernet port with MDI/MDIX as LAN
- 1-port 10/100 Mbps Ethernet port with MDI/MDIX as WAN
- One Power Input: 100-240 VAC, 50 ~ 60 Hz
- LED Display on Top-Case
  - Power
  - Powerline Link and Activity
  - Ethernet LAN Link and Activity
  - Ethernet WAN Link and Activity
  - Security Status

### Physical Specifications

- Dimensions: 162 (W) x 118 (D) x 35 (H) mm
- Weight: 315 g

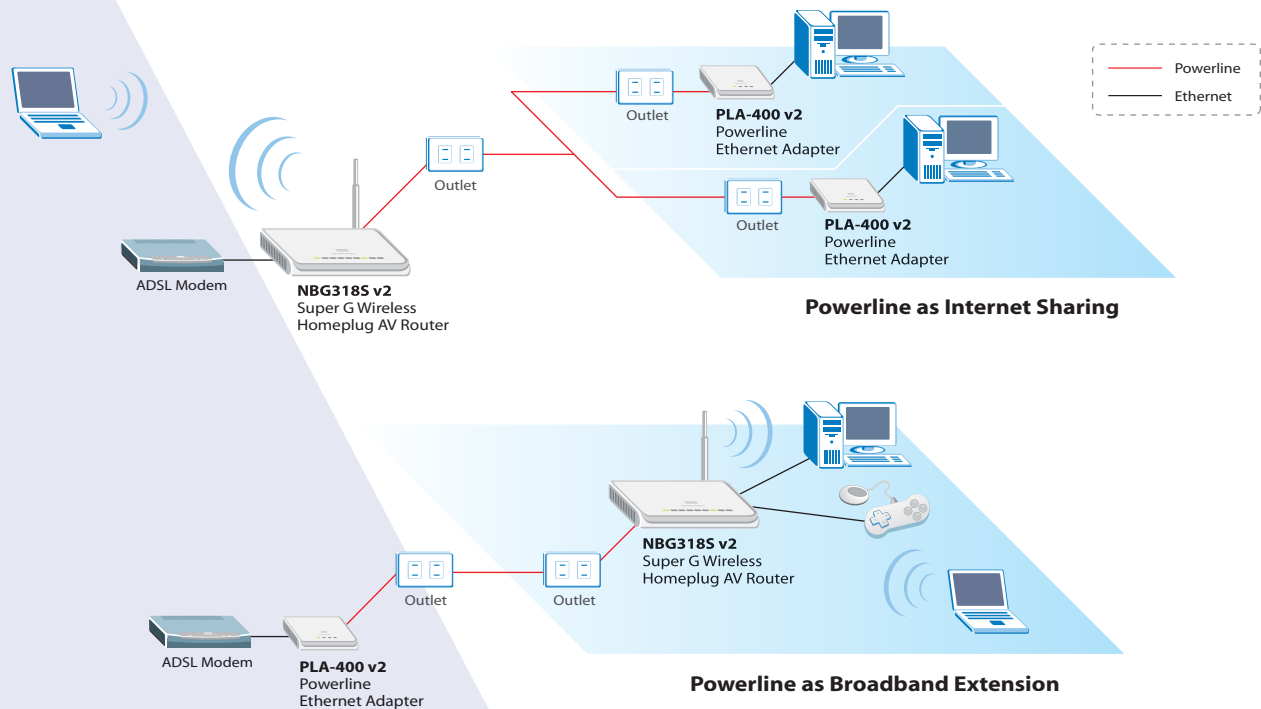
### Environmental Specifications

- Operating temperature: 0°C ~ 40°C
- Storage temperature: -30°C ~ 60°C
- Operating humidity: 20% ~ 90% RH
- Storage humidity: 20% ~ 90% RH

### Certification

- Safety: cUL International
- EMI: CE, FCC part 15B, ICID
- HomePlug Certification: HomePlug AV
- Wi-Fi

## Application Diagram



For more product information, visit us on the web at [www.ZyXEL.com](http://www.ZyXEL.com)