



Quick Installation Guide



TEW-672GR

H/W: V1.0R

Table of Contents

English	1
1. Before You Start	1
2. Hardware Installation	2
3. Configure the Wireless Router	3
Troubleshooting	5

1. Before You Start



Package Contents

- TEW-672GR
- Multi-Language Quick Installation Guide
- User's Guide CD-ROM
- 1 x RJ-45 Ethernet Cable
- Power Adapter (12V, 1A)

Installation Requirements

- A computer with a wired or wireless network adapter properly installed
- Web Browser: Internet Explorer (5.0 or higher)
- Broadband Internet
- Installed Cable or DSL Modem

Application



300Mbps Dual Band Wireless N Broadband Router (TEW-672GR)



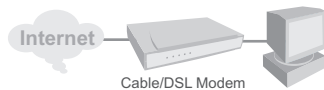
Wireless a (802.11a) 5GHz 54Mbps

Wireless n (802.11n) 2.4GHz 300Mbps

2. Hardware Installation

Note: Gather all information related to your Internet Connection before you start. If necessary, contact your Internet Service Provider (ISP).

1. Verify that you have an Internet connection when connecting your computer directly to the Cable or DSL modem.



2. Connect one end of a RJ-45 cable to one of the TEW-672GR's LAN ports. Connect the other end of the cable to the computer's Ethernet port.

3. Connect one end of a RJ-45 cable to the TEW-672GR's WAN port. Connect the other end of the cable to your modem.

4. Connect the AC Power Adapter to the wireless router and then to a power outlet.

5. Verify that the following panel lights are on: **Power, LAN, WAN** and **WLAN**.



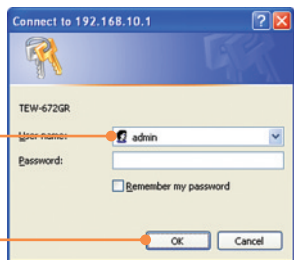
3. Configure the Wireless Router

Note: It is recommended that you configure the Wireless Router from a wired computer.

1. Open your web browser, type **http://192.168.10.1** in the Address bar, and press **Enter**.



2. Enter the User Name and Password, and then click **OK**.
User Name: **Admin**
By default, there is no password.



3. Click **Network** and then click **WAN Setting**. Then select the proper Internet connection type.



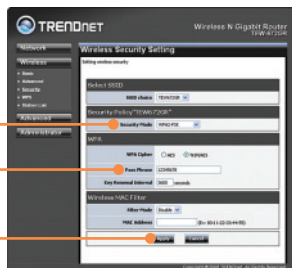
4. Configure the settings based on information provided by your ISP. Then click **Apply**.

- Click **Wireless** and then click **Basic**. Enter the desired **Wireless Name (SSID)** and then click **Apply**. The default **Wireless Name (SSID)** is TEW672GR.



Note: The example below is for WPA2-PSK security. If you select WPA-PSK or WPA2-PSK, make sure your wireless adapters support WPA or WPA2. If your wireless adapters do not support WPA or WPA2, then select WEP.

- Select the desired **Security Mode**, enter the **Pass Phrase** (Encryption Key) and then click **Apply**.



Your configuration is now complete.

For detailed information regarding the **TEW-672GR**'s configuration and advanced settings, please refer to the User's Guide included on the Utility & Driver CD-ROM or TRENDnet's website at www.trendnet.com

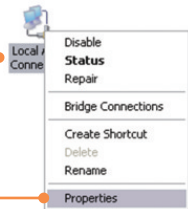
Register Your Product

To ensure the highest level of customer service and support, please take a moment to register your product Online at: www.trendnet.com/register
Thank you for choosing TRENDnet

Q1: I typed `http://192.168.10.1` in my Internet Browser's Address Bar, but an error message says "The page cannot be displayed." How can I get into the TEW-672GR's web configuration page?

A1: First, check your hardware settings again by following the instructions in Section 2. Second, make sure the LAN and WLAN lights are lit. Third, make sure your TCP/IP settings are set to **Obtain an IP address automatically** (see the steps below).

1. Go into the **Control Panel**, double-click the **Network Connections** icon and then right-click the **Local Area Connection** icon and then click **Properties**.



2. Right click **Internet Protocol (TCP/IP)** and then click **Properties**. Then click on **Obtain an IP address automatically**.



Fourth, press on the factory reset button for 15 seconds.

Q2: I am not sure what type of Internet Account Type I have for my Cable/DSL connection. How do I find out?

A2: Contact your Internet Service Provider's (ISP) support service for the correct information.

Q3: I configured my router with my ISP settings, but I can not get onto the Internet. What should I do?

A3: First, verify that you can get onto the Internet with a direct connection into your modem. Second, contact your ISP and verify all the information that you have in regards to your Internet connection settings is correct. Third, power cycle your modem and router. Unplug the power to the modem and router. Wait 30 seconds, and then reconnect the power to the modem. Wait for the modem to fully boot up, and then reconnect the power to the router.

Q4: All the settings are correct, but I can not make a wireless connection to the Router. What should I do?

A4: First, make sure that the WLAN switch on the back of the router is set to on. Second, double check that the WLAN light on the Router is lit. Third, power cycle the TEW-672GR. Unplug the power to the TEW-672GR. Wait 15 seconds, then plug the power back in to the TEW-672GR. Fourth, contact the manufacturer of your wireless network adapter and make sure the wireless network adapter is configured with the proper SSID. The preset SSID of the Access Point is **TEW672GR**.

If you still encounter problems or have any questions regarding the **TEW-672GR**, please contact TRENDnet's Technical Support Department.

Certifications

This equipment has been tested and found to comply with FCC and CE Rules.

Operation is subject to the following two conditions:

- (1) This device may not cause harmful interference.
- (2) This device must accept any interference received. Including interference that may cause undesired operation.



Waste electrical and electronic products must not be disposed of with household waste. Please recycle where facilities exist. Check with you Local Authority or Retailer for recycling advice.



NOTE: THE MANUFACTURER IS NOT RESPONSIBLE FOR ANY RADIO OR TV INTERFERENCE CAUSED BY UNAUTHORIZED MODIFICATIONS TO THIS EQUIPMENT. SUCH MODIFICATIONS COULD VOID THE USER'S AUTHORITY TO OPERATE THE EQUIPMENT.

ADVERTENCIA

En todos nuestros equipos se mencionan claramente las características del adaptador de alimentación necesario para su funcionamiento. El uso de un adaptador distinto al mencionado puede producir daños físicos y/o daños al equipo conectado. El adaptador de alimentación debe operar con voltaje y frecuencia de la energía eléctrica domiciliar existente en el país o zona de instalación.



Product Warranty Registration

Please take a moment to register your product online.
Go to TRENDnet's website at <http://www.trendnet.com/register>

TRENDnet[®]
20675 Manhattan Place
Torrance, CA 90501
USA