



**COMPUTER CONNECTION TECHNOLOGY**

---

## **KVM Switch Compact USB Audio**

**User Manual**

*English*

---



LINDY No. 32797

**[www.lindy.com](http://www.lindy.com)**



© LINDY ELECTRONICS LIMITED & LINDY-ELEKTRONIK GMBH - FIRST EDITION (January 2007)



## **Introduction**

Thank you for purchasing this LINDY Compact USB Audio KVM Switch. This product allows you to control two USB equipped computers using only one keyboard, one mouse and one VGA monitor. Not only this, but with its audio connections, you can share your speakers and microphone too.

Another neat feature of this switch is that you can connect a USB hub to either the keyboard or mouse input port and share your peripherals between the two connected computers. The hub connection feature supports USB 1.1 speeds only.

The switch's built-in KVM connection cables make it really easy to use and set up – simply plug in your keyboard, mouse, monitor, speakers and microphone, connect your computers and you're ready to go!

This KVM Switch can be used with both PC and Mac computers. When using PCs with Windows ME/2000/XP and Vista you can switch control by pressing a button on the top of the switch, by using keyboard hotkey commands, or using the supplied software. If you are using Windows 98SE there is limited support for the KVM software switching, we recommend you use the push button switching option only.

We do not recommend you use this USB KVM Switch with PCs running Linux. Most of these systems do not have the required support and drivers for the USB KVM device included (as of January 2007) and may not boot up correctly or may not be able to recognise the attached USB devices.

If you are using a Mac, you can switch using the push button only. For future improvements, including software switching for Mac users please visit the product page (No. 32797) on the LINDY website and check for updated software.

### **Recommended System Requirements:**

- PC with USB support running Windows ME, 2000, XP or Vista
- Mac with OS X or above.

### **Features**

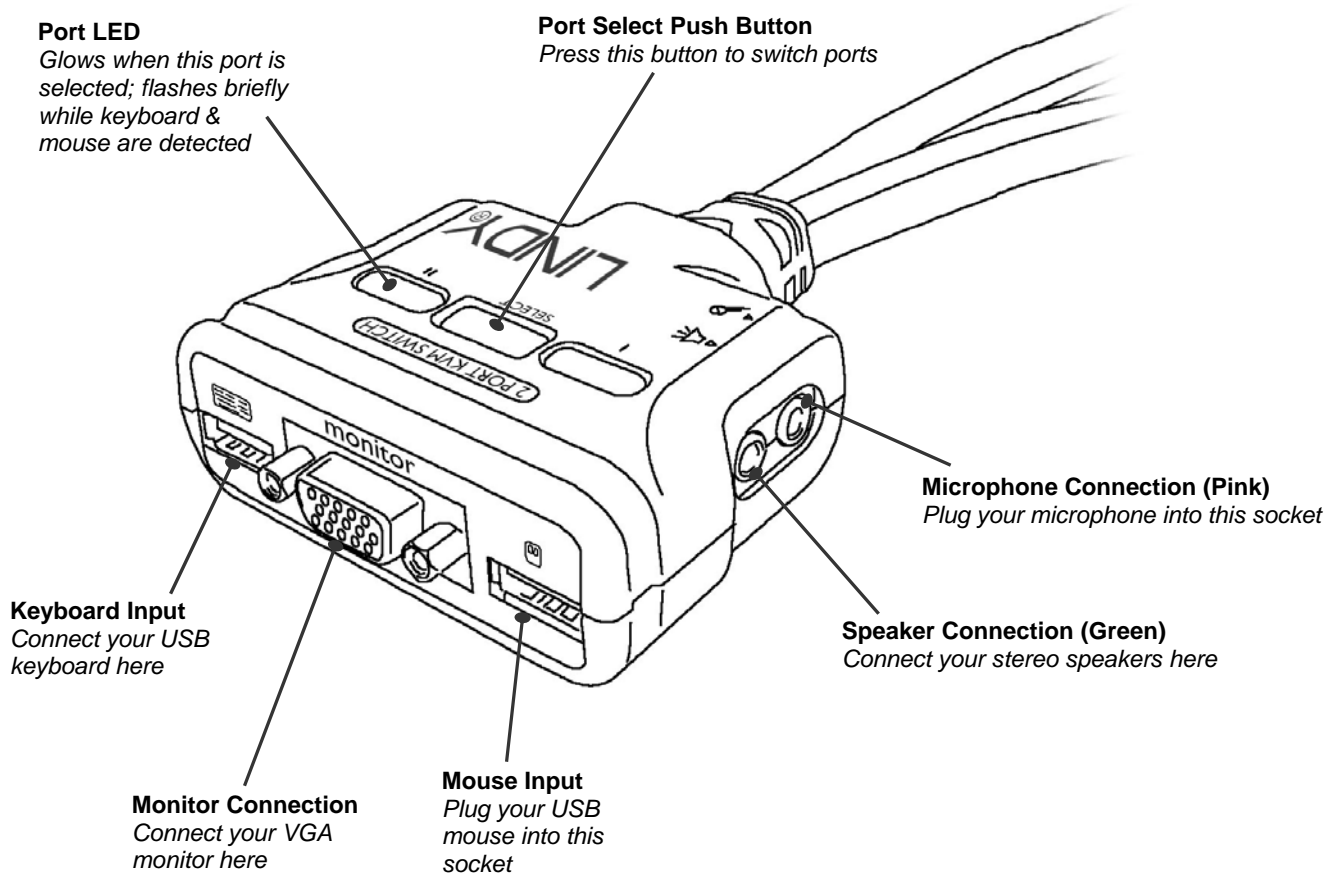
- 2 Port USB KVM Switch with audio support
- Built-in 1.4m KVM + Audio connection cables
- Microphone and speakers support
- Push button for switching ports (PC and Mac)
- Hotkey and software switching (PC only)
- Allows connection to a USB hub for sharing peripherals (USB 1.1 speed only)
- Easy Plug & Play installation

### **Package Contents**

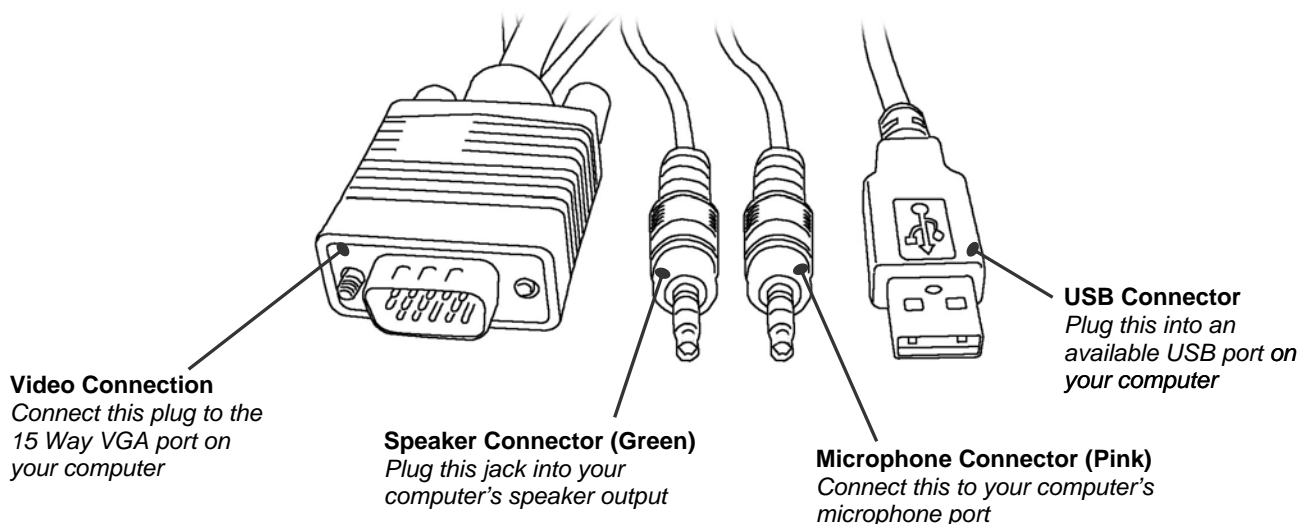
- LINDY KVM Switch Compact USB Audio
- Software & Manual CD
- Printed English, French, German & Italian Quick Guides

## Product Overview & Installation

**KVM Switch** - Before beginning, switch off your computers and monitor. Make the connections to the KVM switch and your computers as detailed below and then switch on your computers, your monitor and your speakers (if required).



**KVM Cables** – Connect the integrated KVM cables from the switch to your computers as detailed below:



## Operation

### KVM Switch Detection – First Time Operation

After connecting the KVM Switch for the first time each computer will automatically detect the switch and the keyboard and mouse that are connected to it. During this process, please do not try and switch between computers

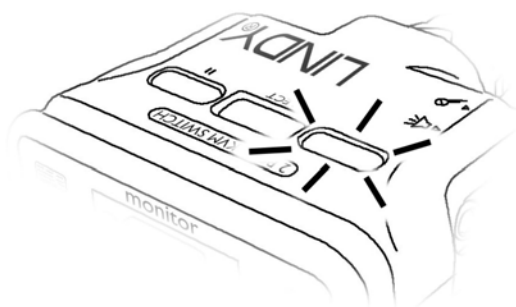
There are three methods of controlling this KVM Switch:

- Push button
- Hotkeys
- KVM Switcher software

Hotkey and software switching is supported by Windows PCs only; Mac users must use the push button to switch ports.

**Note:** You can only switch to a port if a computer is connected to it and powered on!

Each time you switch between computers, there will be a very brief delay as the computer detects the keyboard and mouse connected to the KVM switch. This process is indicated by the port LED flashing. The LED produces a solid glow when the port is fully active and keyboard / mouse control is enabled.



The Port LED flashes during keyboard & mouse detection

## Push button switching

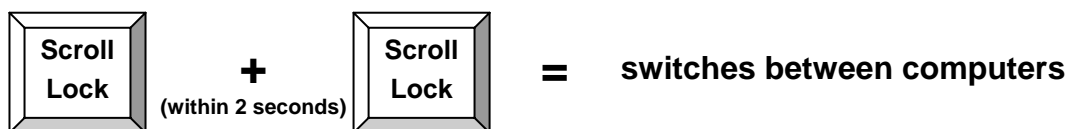
The **Select** button on top of the KVM switch allows direct selection of the ports. Simply press the button to switch!

### Using a Mac and PC combination

If you are connecting a Mac and PC to the KVM Switch, we recommend you use a PC keyboard for console control. Please be aware that if you are used to using a Mac keyboard, the shortcut keys will correspond to different keys on a PC keyboard. Furthermore, not all Mac keyboard controls will be available when using a PC keyboard.

## Hotkey switching

If you are using PCs only you can switch by pressing the 'Scroll Lock' key twice:



## Software switching

Windows PC users can switch using the supplied KVM Switcher software. This utility also allows user defined hotkeys to be set up, Autoscan operation and the ability to switch computers without switching audio. The software must be installed on both computers if you want to switch between them using the utility.

### Installing the KVM Switcher software

Insert the supplied CD into your CD-ROM drive. The program should auto-run. If it does not, simply double-click the **KVMIn.exe** file in the CD folder.

Follow the on-screen instructions to install the software.

### Using the KVM Switcher Utility

Once the KVM Switcher software has been installed, the following icon will be appear on your desktop:

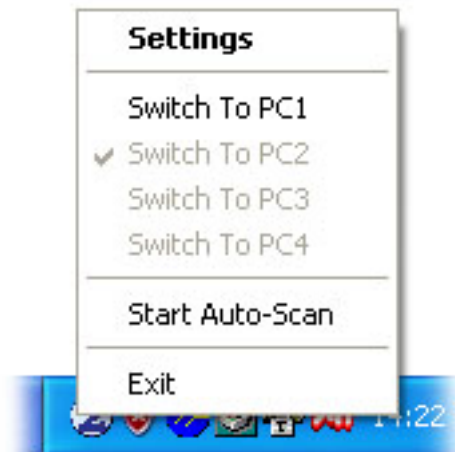


One of the following icons will also appear in the Notification Area of the Task Bar depending on if and how the KVM switch has been connected:



If the KVM Switch has not been connected, you will see the icon on the right, otherwise you will see either a '1' or a '2' as shown above depending on which port the computer is connected to.

To switch using software control simply right-click the icon in the Task Bar. The following pop-up window will appear:



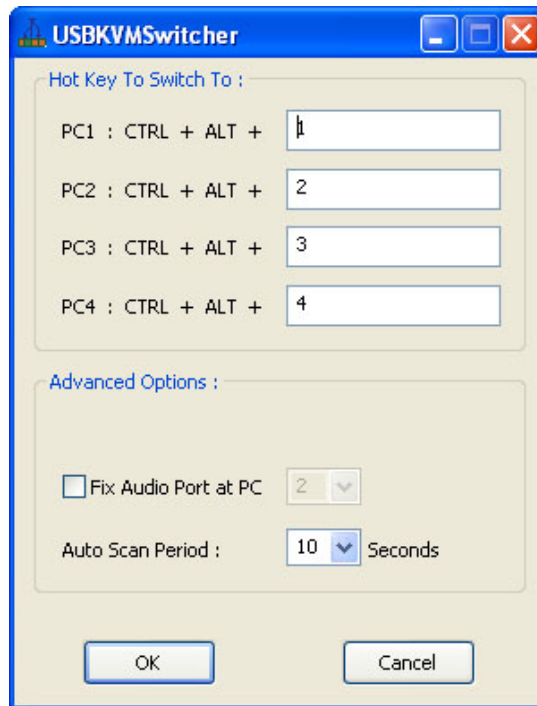
Select **Switch to PC1** or **Switch to PC2** depending on the computer you are currently controlling ('Switch to PC3' and 'Switch to PC4' are not selectable). The KVM switch will immediately switch to the other computer.

Select **Start Autoscan** to begin automatic switching between computers. To stop automatic switching, right-click the icon and select **Stop Autoscan**.

## KVM Switcher Configuration

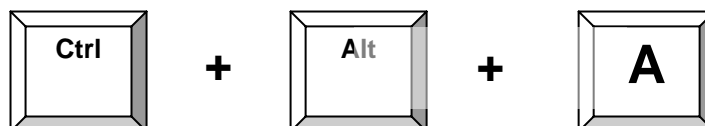
To launch the KVM Switcher configuration utility, double-click the icon on the desk-top, or right-click the icon on the taskbar and select **Settings**.

The following window will appear:



### Defining Hotkey Commands

You can specify the keyboard hotkey command by simply typing your chosen key into the appropriate box. E.g. you could specify the hotkey for switching to computer 1 as...



...by simply typing 'A' (not case sensitive) in the PC1 box.

The following keys can NOT be user defined as hotkeys: **Alt**, **Ctrl**, **Shift**, **Caps Lock**, **Tab**, and the **Function** and **Edit** keys. All other keys, including those on the numeric keypad can be used.

### Fix Audio Port at PC

This option allows you to fix the microphone and speaker channels to one computer. This means the keyboard, video and mouse signals can be switched from the first computer to the second, while the audio signals remain connected to the first computer.

### Auto Scan Period

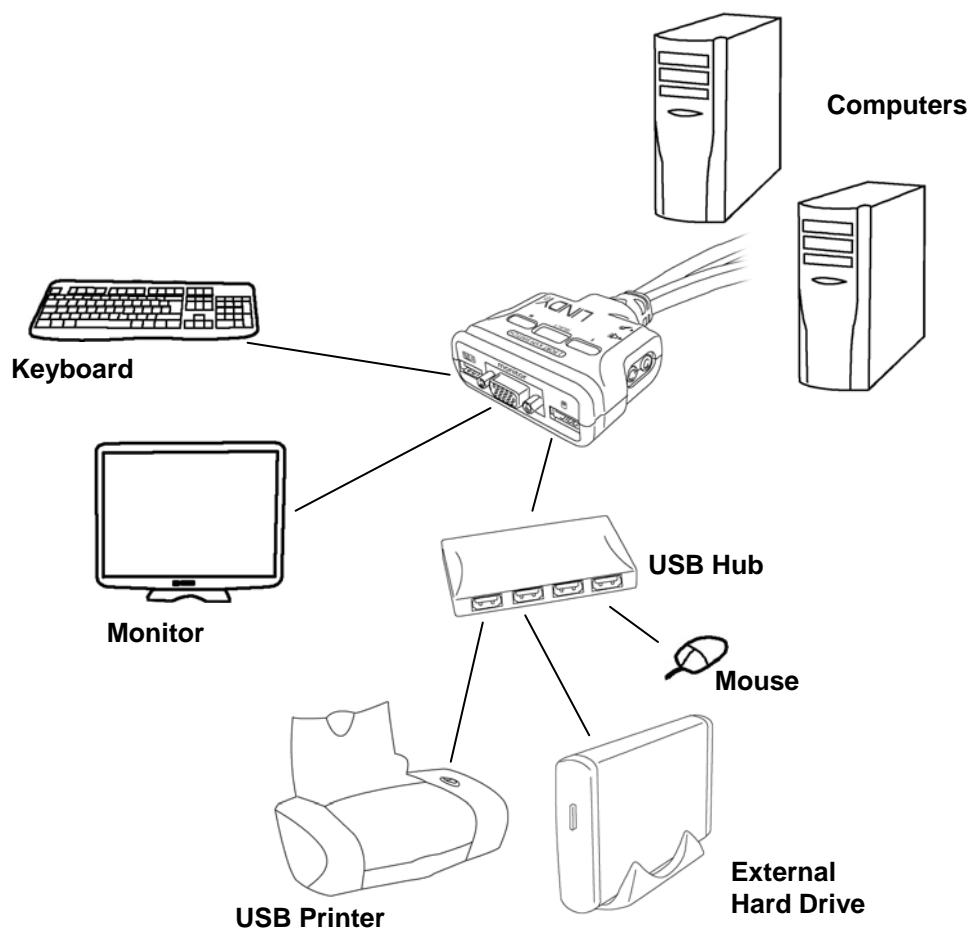
Here you can define the auto scan period from 10 – 60 seconds. The auto scan period is the amount of time the KVM Switch will wait before automatically switching to the next computer.

## Using the KVM Switch with a USB Hub

You can connect a USB hub to the KVM Switch to allow you to share your peripherals between the two connected computers. When doing this, each time you switch the KVM console, the hub and its connected peripherals are switched too.

**Note:** This feature supports USB 1.1 speeds only, you can connect the hub to either the keyboard or the mouse ports, but you must remember to reconnect your keyboard or your mouse to the hub!

### Typical Example:





## Troubleshooting

***When a computer is switched off, or in sleep or standby mode then the monitor will not show any display. (Note that this is not a sign of a faulty KVM Switch) Wake up your computer from sleep or standby mode, as you would do in the normal way.***

Before commencing further troubleshooting please ensure that all cables are inserted correctly into the relevant ports. You may wish to label each of the cables for easy identification, and to avoid confusion later.

Make sure that both the connected computers support booting up with a USB keyboard (and USB mouse) attached. This feature requires **USB legacy support from your computer's BIOS**. If your computer cannot boot with USB keyboards attached, please check the motherboard supplier's website for the most recent BIOS update (which includes USB legacy support). If this is not available then you can only use a USB KVM switch if the computer's BIOS provides the option to disable keyboard error messages and continue boot up. In such cases Windows will install the USB keyboard and mouse drivers, but you will have no keyboard access to the computer until Windows is up and running!

### **If the mouse does not work!**

If this is the first time you have used the computer and you have not yet installed a USB mouse, there may be an error message telling you that a mouse is not detected. If this happens you should switch the computer off and connect a USB mouse and keyboard directly to it to install the relevant drivers. Once this has been done you may connect the KVM switch.

### **The KVM Switch will not switch computers!**

Make sure the computer you are trying to switch to is turned on. The KVM Switch will only switch to a port if the computer is connected and switched on!

## CE Statement

This device complies with the European Regulations for Electromagnetic Compatibility (EMC) of the European Union and it is equipped with the CE mark. This unit has to be used with high quality shielded connection cables. Only if these high quality shielded cables are used it can be sure that the EMC compatibility is not adversely influenced.

## FCC Statement

Shielded cables must be used with this equipment to maintain compliance with radio frequency energy emission regulations and ensure a suitably high level of immunity to electromagnetic disturbances.

### FCC Warning

This equipment has been tested and found to comply with the limits for a Class B Digital device, pursuant to part 15 of the FCC Rules. These limits are designed to provide reasonable protection against harmful interference in a residential installation. This equipment generates, uses, and can radiate radio frequency energy and, if not installed and used in accordance with the instructions, may cause harmful interference to radio communications. However, there is no guarantee that interference will not occur in a particular installation. If this equipment does cause harmful interference to radio or television reception, which can be determined by turning the equipment off and on, the user is encouraged to try to correct the interference by one or more of the following measures:

- Reorient or relocate the receiving antenna
- Increase the separation between the equipment and receiver
- Connect the equipment into an outlet on a circuit different from that to which the receiver is connected
- Consult the dealer or an experienced technician for help

You are cautioned that changes or modifications not expressly approved by the party responsible for compliance could void your authority to operate the equipment.

## WEEE (Waste of Electrical and Electronic Equipment), Recycling of Electronic Products



### United Kingdom

In 2006 the European Union introduced regulations (WEEE) for the collection and recycling of all waste electrical and electronic equipment. It is no longer allowable to simply throw away electrical and electronic equipment. Instead, these products must enter the recycling process.

Each individual EU member state has implemented the WEEE regulations into national law in slightly different ways. Please follow your national law when you want to dispose of any electrical or electronic products.

**More details can be obtained from your national WEEE recycling agency.**

### Germany / Deutschland

Die Europäische Union hat mit der WEEE Richtlinie umfassende Regelungen für die Verschrottung und das Recycling von Elektro- und Elektronikprodukten geschaffen. Diese wurden von der Bundesregierung im Elektro- und Elektronikgerätegesetz – ElektroG in deutsches Recht umgesetzt.

Dieses Gesetz verbietet vom 24.März 2006 an das Entsorgen von entsprechenden, auch alten, Elektro- und Elektronikgeräten über die Hausmülltonne! Diese Geräte müssen den lokalen Sammelsystemen bzw. örtlichen Sammelstellen zugeführt werden! Dort werden sie kostenlos entgegen genommen. Die Kosten für den weiteren Recyclingprozess übernimmt die Gesamtheit der Gerätehersteller.

### France

En 2006, l'union Européenne a introduit la nouvelle réglementation (WEEE) pour le recyclage de tout équipement électrique et électronique.

Chaque Etat membre de l' Union Européenne a mis en application la nouvelle réglementation WEEE de manières légèrement différentes. Veuillez suivre le décret d'application correspondant à l'élimination des déchets électriques ou électroniques de votre pays.

### Italy

Nel 2006 l'unione europea ha introdotto regolamentazioni (WEEE) per la raccolta e il riciclo di apparecchi elettrici ed elettronici. Non è più consentito semplicemente gettare queste apparecchiature, devono essere riciclate.

Ogni stato membro dell' EU ha tramutato le direttive WEEE in leggi statali in varie misure. Fare riferimento alle leggi del proprio Stato quando si dispone di un apparecchio elettrico o elettronico.

**Per ulteriori dettagli fare riferimento alla direttiva WEEE sul riciclaggio del proprio Stato.**

LINDY No. 32797

1<sup>st</sup> Edition January 2007



[www.lindy.com](http://www.lindy.com)