

# *EZ USB Networking Cable*

---

## *User Guide*

---

*SMC2004USB-Cable*



V1.0



**SMC**<sup>®</sup>  
Networks

## Welcome.

Congratulations on purchasing the SMC EZ Connect USB Cable. Very shortly you will have all of the benefits of having your own small network. The SMC EZ Connect USB cable has been designed to be easy to install and use. The SMC EZ Connect USB cable provides a quick and easy solution to network up to 17 USB computers via your USB ports without having to add any network interface cards.

The SMC EZ Connect USB cable is suitable for small offices, home offices, mobile users and network gamers.

## Package Contents:



1 x SMC EZ Connect USB Cable



1 x 3M USB cable



1 x Quick Installation Guide



1 x SMC CDROM. (Contains long version of manual and installation software)

## Product Features:

USB specification revision 1.1 compliant

USB host to host communication, Single cable solution for network communication, construct USB Network up to 17 PCs

Resources sharing such as Printers, CD-ROMs, Modems, Scanners, etc.

Support TCP/IP, NetBEUI, IPX/SPX protocols

Standard Windows Explorer user interface

Data transfer rate: Up to 5M bits/sec

## System Requirements:

IBM PC 486DX4-100 MHz or higher or compatible system

Available USB port

Windows 98, Windows 2000, Windows CE or Windows ME

## Important things to check before you start the installation:

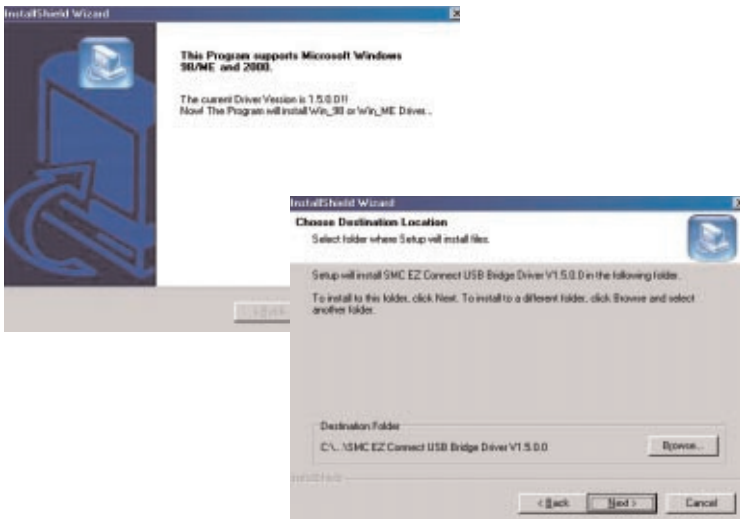
1 – Your computer's USB port is functioning properly

2 – **Do not** connect the SMC EZ Connect USB cable to any computer before you have installed the software.

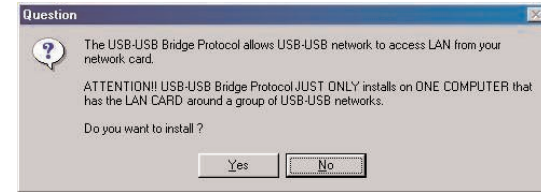
## Step 1

### Install the software on your computers –

1. Switch on the computers that you will connecting the SMC EZ Connect USB Cable and make sure that the USB ports are enabled and working properly.
2. Insert the SMC CD-Rom into the CD-ROM drive and find the installation program. (This should be in directory D:\SMC.exe)
3. The InstallShield Wizard will guide you through step-by-step to complete the installation process.



4. The InstallShield Wizard will pop-up a Question Window. If the computer you installed is not a bridge computer or main computer. (please refer to **Step 4 – Installing the SMC EZ Connect USB Bridge Driver**) you must click "No", but if you are on the bridge computer, you have to click "Yes". Because this "**SMC EZ Connect USB Bridge Protocol**" must not be installed on only one computer in the USB network.



5. A window will appear asking if you want to set the IP address for the USB Network Adapter. Click **NO** to for the IP address to be set up automatically. Only set your own IP address if you are an experienced network administrator or if you are connecting to an Ethernet network. (See Step 4 for more details)
6. During the installations, the system may ask you to insert system disk(i.e Win98 CD-ROM) please insert your system disk your CD-ROM drive then click **OK**.
7. If the system cannot find any file, please direct to your CD-ROM drive and click **OK**.
8. The system will ask you to reboot the computer when the installation is complete. Please remove the driver from your CD-ROM drive, connect the EZ Connect USB cable and restart your computer.

### Now go through the same process on the other computer(s).

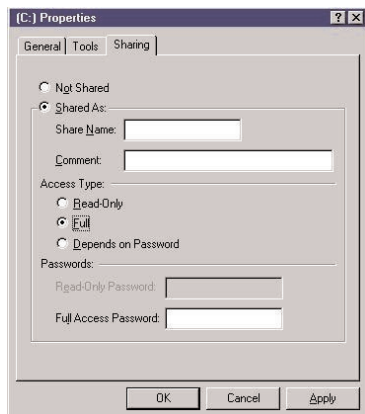
Your USB network environment is set up automatically when the installation is complete. Now you can see all the computers in your network in **Network Neighborhood** and you can share programs, files and other peripheral devices through the standard Windows interfaces, e.g. Windows Explorer and Network Neighborhood.

## Step 2

### Start sharing files and Printers:

Click the **Start** menu, point to **Programs\Windows Explorer**.

- Expand the desktop and select the drive, folder, file or printer you want to share.
- Move your mouse cursor and click right button on the resource.
- Select **Sharing**.
- Select **Shared As** and enter the **Shared Name** to be recognized by other computers.
- Select an access type. For example, choose **Full** to give the complete access right to this resource or **Read-Only** to give others the read-only right to the resource.
- Click **Apply** and then **OK**.



### Note:

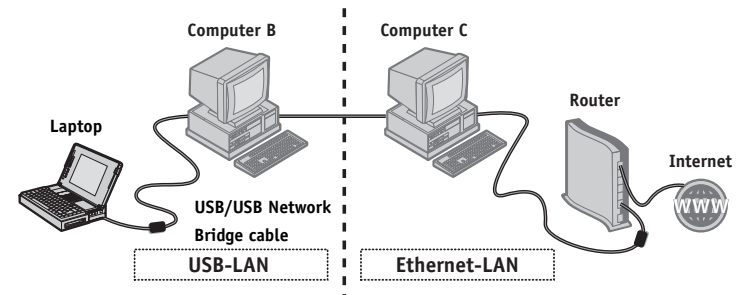
Other people will only be able to share files that you select to be shared. Until you have chosen these files, other users will not be able to see any files or folders on your PC.

The quickest way to set this up to allow other users to share your entire hard drive rather than selecting individual folders.

## Step 3

### Access Internet through Ethernet -TCP/IP Setup:

With the SMC EZ Connect USB Cable, you can access the Internet through an Ethernet network. We need to construct a USB LAN and an Ethernet LAN environment, as the diagram shows below:



### Network Construction

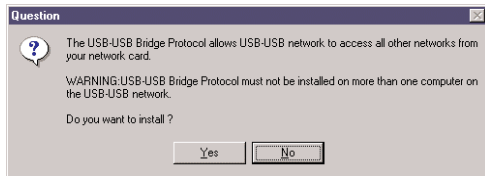
- Computer A:** Connects Computer B with EZ Connect USB Cable.
- Computer B:** The **Bridge Computer** which connects Computer A through EZ Connect USB cable and connects Computer C with an Ethernet Adapter.
- Computer C:** One PC of the Ethernet LAN, connects Computer B with an Ethernet Adapter and can access the Internet directly.

## Step 4

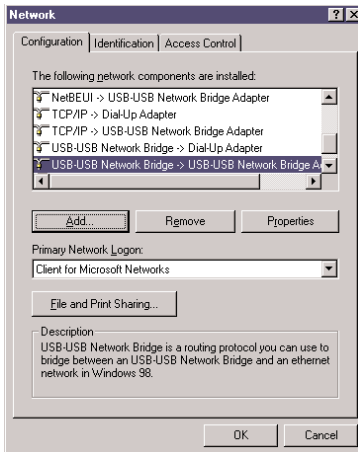
### Installing the SMC EZ connect USB Bridge Driver:

The bridge computer is the main computer in the network. **There can only be one Bridge computer in the network**, It is very important when you are installing the software to only install the Bridge drivers on one of the computers.

The InstallShield Wizard will pop-up a Question Window as shown below.



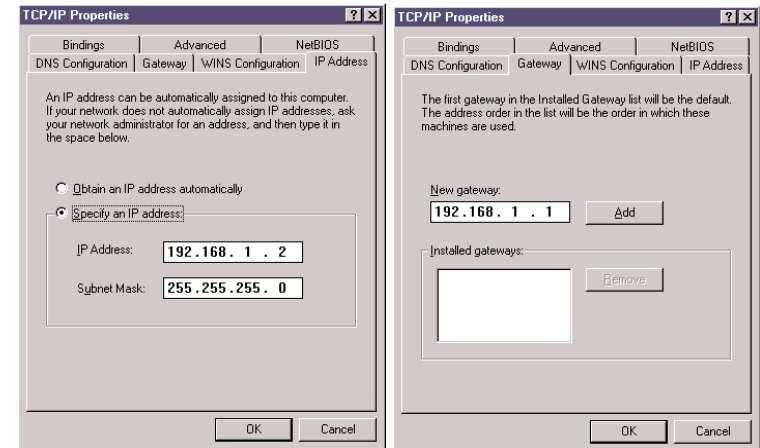
After you install this **Bridge Driver** on Computer B, there will be one more protocol: **SMC EZ Connect USB Bridge Adapter** in the Network Configuration. This is a routing protocol, you can use it to bridge between an USB LAN and an Ethernet LAN.



### TCP/IP Setup on Computer A

When all installation processes are completed, you have to **specify an IP address , Subnet Mask and Gateway on Computer A:**

1. Click the **Start** menu, point to **Setting\Control Panel**. Double click **Network** icon. In **Configuration** tab, select **TCP/IP -> SMC EZ Connect USB Bridge Adapter**, then click **Properties**.
2. In **IP Address** tab, please choose "**Specify an IP Address**", and fill in the **IP address and Subnet Mask** value properly. These information should be from your MIS people and make sure this **IP Address** which is not in use of your **Ethernet**, or it will cause a network failure.
3. In **Gateway** tab, you must specify a proper value. This IP Address of Gateway should be the same with the other Computers in the Ethernet.
4. When complete all these TCP/IP setup processes, you have to restart your computer again. After that, the **Computer A** can use the EZ Connect USB Cable to connect Computer B to **access the resources of Ethernet (File , CD-ROM, and Scanner sharing) and execute all the functions on Internet (WWW, Email, FTP, Telnet, Gopher... etc.)**.



## Driver Uninstallation

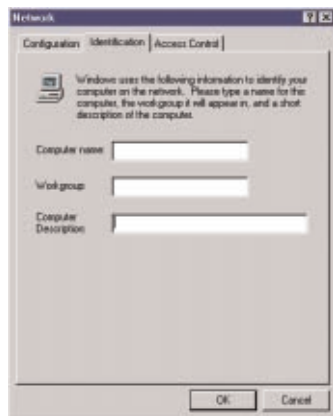
Follow the steps below to remove the the SMC EZ Connect USB Network Bridge driver from Windows system:

1. Click the **Start** menu, point to **Settings\Control Panel**. Double click **Add/Remove Programs** icon.
2. In **Install/Uninstall** tab, select SMC EZ Connect **USB Network Bridge Driver V1.5.0.0**
3. Click **Add/Remove** button and then click OK.
4. Restart Windows system.

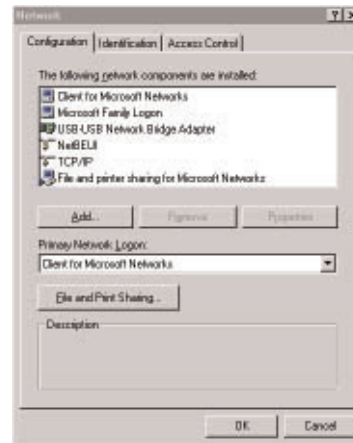
## Troubleshooting

If you have successfully installed the driver, but can't see either your or the other computers' names in Window's Network Neighborhood, please check the following points.

1. Make sure the EZ Connect USB Cable is firmly connected to the USB ports on your computer or USB hubs.
2. Click the **Start** menu, point to **Settings\Control Panel**. Double click **Network** icon. In **Identification** tab, ensure each computer has been given a unique name, not to conflict with each other. Make sure the **Workgroup** name is the same for all the computers in the network



3. In **Configuration** tab, check the **“SMC EZ Connect USB Network Bridge Adpater”** is in **The following network components are installed** list.
4. In **Configuration** tab, click **File and Print Sharing** button. Make sure both **I want to be able to give others access to my files** and **I want to be able to allow others to print to my printer(s)** functions are selected. It would cause the **File and printer sharing for microsoft networks service** be installed and enable this computer to share its files and printers to the others



After checking all these points, if the network is still not working properly, please contact your supplier instead of revising the settings by yourself unless you are an expert network user.

## Disclaimer

Information in this document is subject to change without notice. The manufacturer does not make any representations or warranties (implied or otherwise) regarding the accuracy and completeness of this document and shall in no event be liable for any loss of profit or any other commercial damage, including but not limited to special, incidental, consequential, or other damages.

No part of this document may be reproduced or transmitted in any form by any means, electronic or mechanical, including photocopying, recording or information recording and retrieval systems without the express written permission of the manufacturer.

All brand names and product names used in this document are trademarks, or registered trademarks of their respective holders.

## FCC Statement

This device generates and uses radio frequency and may cause interference to radio and television reception if not installed and used properly. This has been tested and found to comply with the limits of a Class B computing device in accordance with the specifications in Part 15 of FCC Rules. These specifications are designed to provide reasonable protection against such interference in a residential installation. However, there is no guarantee that interference will not occur in a particular installation. If this device does cause harmful interference to radio or television reception, which can be determined by plugging the device in and out, the user can try to correct the interference by one or more of the following measures:

- Reorient or relocate the receiving antenna.
- Increase the separation between the device and receiver.
- Connect the computer into an outlet on a circuit different from that to which the receiver is connected.
- Consult the dealer or an experienced radio/TV technician for help.

## Technical Support

If you experience any problems, please contact your local SMC office in Europe. You can find your nearest office by logging onto [www.smc-europe.com](http://www.smc-europe.com).