

802.11g Wireless LAN Outdoor CPE AP

WAP-6200

Quick Installation Guide

Table of Contents

Package Content.....	3
Hardware Installation	4
Web Configuration	8
Further Configuration	8

Designed with the most innovative 802.11b/802.11g technology, WAP-6200 provides 54Mbps high data rate for outdoor environment. There are five operating modes supported in WAP-6200: AP, Client, WDS, AP+WDS, Repeater AP, Wireless Client, Repeater, and Bridge. The multiple operation modes selection and built-in 14dBi flat panel antenna and default 200mW output power make WAP-6200 a suitable CPE solution for widely open space applications such as WISPs, campuses, and airports. Except for 64/128-bit WEP encryption, WAP-6200 integrates WPA, WPA2 and 802.1x encryption to secure the information of your wireless LAN.

Package Content

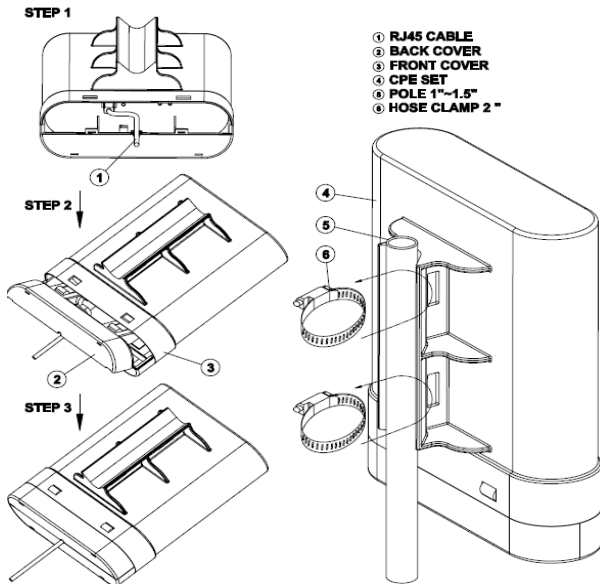
- WAP-6200 x 1
- PoE injector x 1
- Power Cord x 1
- Mounting Kit x 1
- CD-ROM x 1
- Quick Installation Guide x 1



Note

If any of the above items are missing or damaged, contact your local dealer for support.

Hardware Installation



Before you proceed with the installation, it is necessary that you have enough information about WAP-6200.

1. Locate an optimum location and use the provided Mounting kit to tie the WAP-6200 to a pole.



Note

For secured reason, while install the CPE AP, please be aware for the electric wires around, and tighten the pole. Without tighten the CPE AP, the pole and the installed site is with electric wire around, there could be danger of being hurt by falling or lethal injury.

2. Strongly suggest using SFTP cable (PLANET offers 25-meter SFTP cable, please contact with local dealer for more information.) for waterproof and avoiding thunder stroke, connect the RJ45 cable connector of the WAP-6200 to the "P+DATA OUT" port of PoE Injector.



Note

Strongly suggest using SFTP cable, for better protection of the data wire. 25-meter SFTP cable also available by order, the part no is WL-SFTP-25. Please contact with local dealer for more information.

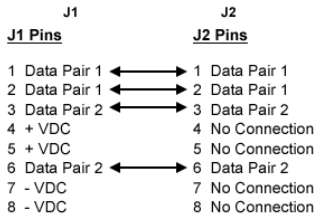
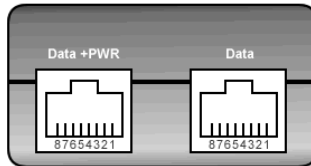
3. Be noticed, there are 2 ways for RJ45 cable connector avoiding water or thunder stoke.
 - a. Stick and bind with rubber mastic tape on RJ45 cable connector after connecting cable to "P+DATA OUT" port of PoE Injector.
 - b. After connecting cable to "P+DATA OUT" port of PoE Injector, open the Back Cover and put the RJ45 cable connector inside of Back Cover, then plug the Back Cover to CPE Set for preventing water.
4. Using Category 3 or higher UTP or STP cable, connect the "DATA IN" port of PoE Injector to a 10Mbps or 10/100Mbps Ethernet hub or switch, and connect the PC on the same LAN for management.



Note

To avoid thunder strike, consider to install ELA-100, thunder arrester toward the CPE AP and the PoE injector.

5. Connect the power cord to the PoE Injector, and plug it into an AC outlet to power on the WAP-6200.



Note

1. **ONLY** use the power adapter supplied with the WAP-6200. Otherwise, the product may be damaged.
2. Strongly suggest using SFTP cable whether the cable exposed outdoor for waterproof and avoiding thunder stroke.



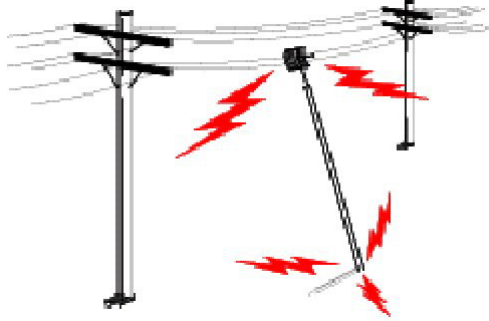
OUTDOOR INSTALLATION WARNING

IMPORTANT SAFETY PRECAUTIONS:

LIVES MAY BE AT RISK! Carefully observe these instructions and any special instructions that are included with the equipment you are installing.

CONTACTING POWER LINES CAN BE LETHAL.

Make sure no power lines are anywhere where possible contact can be made. Antennas, masts, towers, guy wires or cables may lean or fall and contact these lines. People may be injured or killed if they are touching or holding any part of equipment when it contacts electric lines. Make sure there is NO possibility that equipment or personnel can come in contact directly or indirectly with power lines.



Assume all overhead lines are power lines.

The horizontal distance from a tower, mast or antenna to the nearest power line should be at least twice the total length of the mast/antenna combination. This will ensure that the mast will not contact power if it falls either during installation or later.

TO AVOID FALLING, USE SAFE PROCEDURES WHEN WORKING AT HEIGHTS ABOVE GROUND.

Select equipment locations that will allow safe, simple equipment installation.

- Don't work alone. A friend or co-worker can save your life if an accident happens.
- Use approved non-conducting ladders and other safety equipment. Make sure all equipment is in good repair.
- If a tower or mast begins falling, don't attempt to catch it. Stand back and let it fall.
- If anything such as a wire or mast does come in contact with a power line, **DON'T TOUCH IT OR ATTEMPT TO MOVE IT.** Instead, save your life by calling the power company.
- Don't attempt to erect antennas or towers on windy days.

MAKE SURE ALL TOWERS AND MASTS ARE SECURELY GROUNDED, AND ELECTRICAL CABLES CONNECTED TO ANTENNAS HAVE LIGHTNING ARRESTORS. This will help prevent fire damage or human injury in case of lightning, static build-up, or short circuit within equipment connected to the antenna.

- The base of the antenna mast or tower must be connected directly to the building protective ground or to one or more approved grounding rods, using 1 OAWG ground wire and corrosion-resistant connectors.
- Refer to the National Electrical Code for grounding details.

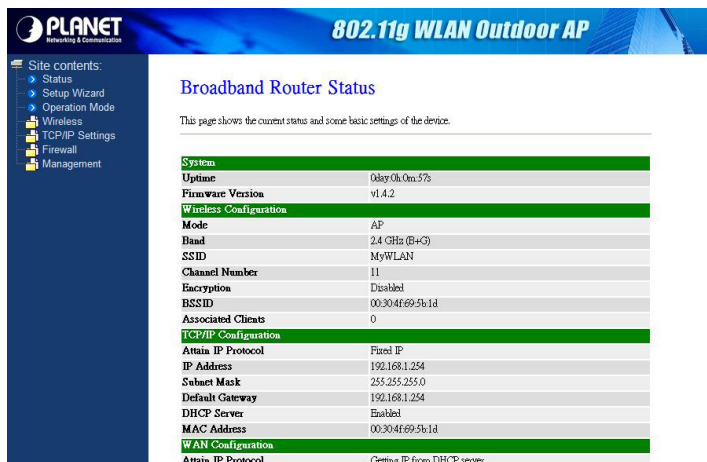
IF A PERSON COMES IN CONTACT WITH ELECTRICAL POWER, AND CANNOT MOVE:

- **DON'T TOUCH THAT PERSON, OR YOU MAY BE ELECTROCUTED.**
- Use a non-conductive dry board, stick or rope to push or drag them so they no longer are in contact with electrical power.
- Once they are no longer contacting electrical power, administer CPR if you are certified, and make sure that emergency medical aid has been requested.

Web Configuration

WAP-6200 provides a user friendly interface for users to configure via web browser. Please follow the below steps to configure WAP-6200 basic settings.

1. It will take about 55 seconds to complete the boot up sequence after power on from PoE.
2. Open your web browser and type WAP-6200 default IP address (<http://192.168.1.254>) into the "Address Field" of your web browser. Before configuration, please make sure your PC's IP address is under the same IP range with WAP-6200, such as 192.168.1.x.
3. After enter the IP address and press Enter key, you can see the login web page without any username/password.



The screenshot displays the web configuration interface for a Planet 802.11g WLAN Outdoor AP. The interface is divided into a left sidebar and a main content area. The sidebar, titled "Site contents:", includes links for Status, Setup Wizard, Operation Mode, Wireless, TCP/IP Settings, Firewall, and Management. The main content area is titled "Broadband Router Status" and contains a table of system and configuration parameters.

PLANET
Networking & Communication

802.11g WLAN Outdoor AP

Broadband Router Status

This page shows the current status and some basic settings of the device.

System	
Uptime	0day 0h, 0m, 5%
Firmware Version	v1.4.2
Wireless Configuration	
Mode AP	
Band	2.4 GHz (B+G)
SSID	MyWLAN
Channel Number	11
Encryption	Disabled
BSSID	00:30:4f:69:5b:1d
Associated Clients	0
TCP/IP Configuration	
Attain IP Protocol Fixed IP	
IP Address	192.168.1.254
Subnet Mask	255.255.255.0
Default Gateway	192.168.1.254
DHCP Server	Enabled
MAC Address	00:30:4f:69:5b:1d
WLAN Configuration	
Attain IP Protocol	Getting IP from DHCP server...

Further Configuration

For more settings of WAP-6200, please refer to the user's manual in the CD. If you have any difficulty on resolving the problem while installing or using the device, please feel free to contact your local dealer or PLANET Technical Support.