



# **ADSL 2/2+ Router**

**ADE-3400, ADE-4400**

## **User's Manual**

## **Copyright**

Copyright (C) 2005 PLANET Technology Corp. All rights reserved.

The products and programs described in this User's Manual are licensed products of PLANET Technology, This User's Manual contains proprietary information protected by copyright, and this User's Manual and all accompanying hardware, software, and documentation are copyrighted.

No part of this User's Manual may be copied, photocopied, reproduced, translated, or reduced to any electronic medium or machine-readable form by any means by electronic or mechanical. Including photocopying, recording, or information storage and retrieval systems, for any purpose other than the purchaser's personal use, and without the prior express written permission of PLANET Technology.

## **Disclaimer**

PLANET Technology does not warrant that the hardware will work properly in all environments and applications, and makes no warranty and representation, either implied or expressed, with respect to the quality, performance, merchantability, or fitness for a particular purpose.

PLANET has made every effort to ensure that this User's Manual is accurate; PLANET disclaims liability for any inaccuracies or omissions that may have occurred.

Information in this User's Manual is subject to change without notice and does not represent a commitment on the part of PLANET. PLANET assumes no responsibility for any inaccuracies that may be contained in this User's Manual. PLANET makes no commitment to update or keep current the information in this User's Manual, and reserves the right to make improvements to this User's Manual and/or to the products described in this User's Manual, at any time without notice.

If you find information in this manual that is incorrect, misleading, or incomplete, we would appreciate your comments and suggestions.

## **FCC Compliance Statement**

The device confirmed to comply with the requirements of FCC Part 15 Rule. Operation is subject to the Following two conditions: (1) This device may not cause harmful interference, and (2) This Device must accept any interference received, including interference that may cause undesired operation.

## **CE mark Warning**

The is a class B device, In a domestic environment, this product may cause radio interference, in which case the user may be required to take adequate measures.

## **R&TTE Compliance Statement**

This equipment complies with all the requirements of DIRECTIVE 1999/5/EC OF THE EUROPEAN PARLIAMENT AND THE COUNCIL OF 9 March 1999 on radio equipment and telecommunication terminal Equipment and the mutual recognition of their conformity (R&TTE).

The R&TTE Directive repeals and replaces in the directive 98/13/EEC (Telecommunications Terminal Equipment and Satellite Earth Station Equipment) as of April 8, 2000.

## **Trademarks**

The PLANET logo is a trademark of PLANET Technology. This documentation may refer to numerous hardware and software products by their trade names. In most, if not all cases, these designations are claimed as trademarks or registered trademarks by their respective companies.

## **Safety**

This equipment is designed with the utmost care for the safety of those who install and use it. However, special attention must be paid to the dangers of electric shock and static electricity when working with electrical equipment. All guidelines of this and of the computer manufacture must therefore be allowed at

all times to ensure the safe use of the equipment.

To avoid struck by lightning, we suggest customers to add a device (lightning protector / surge protector) front of this ADSL router. Improper installation like without this protection and cause the equipment damaged could void the warranty.

## **Revision**

User's Manual for PLANET ADSL 2/2+ Router

Model: ADE-3400, ADE-4400

Rev: 1.0 (Jun. 2005)

Part No. EM-ADE4400v2

# Table of Contents

<b>Chapter 1 Introduction</b> .....	7
1.1 Introducing the ADE-3400/4400 .....	7
1.2 Features of the ADE-3400/4400 .....	7
1.3 Applications for the ADE-3400/4400 .....	10
<b>Chapter 2 Product Information</b> .....	11
2.1 Package Contents .....	11
2.2 The Top LEDs .....	11
2.3 The Rear Ports .....	13
2.4 Cabling .....	14
<b>Chapter 3 Installation</b> .....	15
3.1 Before Configuration .....	15
3.2 Factory Default Settings .....	21
3.3 LAN and WAN Port Addresses .....	22
3.4 Information from your ISP .....	22
3.5 Configuring with your Web Browser .....	23
<b>Chapter 4 Configuration</b> .....	24
4.1 Wizard Setup .....	24
4.1.1 Wizard Setup .....	24
4.1.2 PPPoE .....	25
4.1.3 1483 Routed IP .....	27
4.1.4 1483 Bridged IP .....	27
4.1.5 PPPoA .....	28
4.1.6 Wizard Setup Configuration .....	30
4.2 Advanced setup .....	32
4.2.1 Password .....	32
4.2.2 LAN .....	33

4.2.3 WAN Setup.....	35
4.2.4 NAT .....	37
4.2.4.1 Selecting the NAT Mode.....	38
4.2.4.2 Configuring Edit Port Mapping.....	38
4.2.4.3 Configuring Address Mapping.....	39
4.2.4.4 Editing an Address Mapping Rule.....	41
4.2.5 Security.....	42
4.2.6 Dynamic DNS.....	42
4.2.7 Time Zone .....	43
4.2.8 Remote Management.....	46
4.2.9 UPnP .....	46
4.3 Static Route.....	54
4.3.1 Current Route.....	54
4.4 Maintenance.....	55
4.4.1 System Status .....	56
4.4.2 System Statistics .....	57
4.4.3 DHCP Table .....	59
4.4.4 Diagnostic.....	59
4.4.4.1 Diagnostic-General .....	60
4.4.4.2 Diagnostic DSL Line .....	60
4.4.5 Firmware.....	61
4.4.6 Restart.....	63
4.5 Logout .....	64
Chapter 5 Troubleshooting.....	65

# Chapter 1 Introduction

## 1.1 Introducing the ADE-3400/4400

Planet ADE-3400/4400 ADSL 2/2+ Router is an “all-in-one” unit, combining an ADSL 2/2+ modem, NAT router and Ethernet switch (ADE-4400), providing things you need to get the PCs/laptops on your network connected to the Internet over your ADSL or more ADSL 2+ high speed broadband connection. ADE-3400 is a single port ADSL 2/2+ modem router and ADE-4400 is an ADSL 2/2+ router with 4-port 10/100Mbps Ethernet switch.

Each ADE-3400/4400 complies with ADSL 2/2+ standards for worldwide deployment and supports downstream rates of up to 24 Mbps and upstream rates of up to 3.5 Mbps. It is designed for small office, home office and residential users, enabling even faster speed Internet connections. User can enjoy ADSL services and broadband multimedia applications such as interactive gaming, video streaming and real-time audio much easier and faster than ever before.

Via the user-friendly management interface, the ADSL 2/2+ router can be managed by workstations running standard web browsers. It provides NAT, Security, Dynamic DNS, Time Zone, Remote Management, UPnP, Static Route, and Maintenance.

For more and more important security issue, this product serves as an Internet firewall, protecting your network from being accessed by outside users. Not only provides the natural firewall function, it also provides rich firewall features to secure user's network. All incoming data packets are monitored and filtered. Besides, it can be configured to block internal users from accessing to the Internet.

## 1.2 Features of the ADE-3400/4400

### ADSL Multi-Mode Standard

It supports downstream rates of up to 24 Mbps and upstream rates of up to 1 Mbps. It is compliant with Multi-Mode standard (ANSI T1.413, Issue 2; G.dmt (G.992.1); G.lite (G992.2), G.hs (G994.1), G.dmt.bis (G.992.3), G.dmt.bisplus (G.992.5).

### **Fast Ethernet Switch (ADE-4400)**

A 10/100Mbps fast Ethernet switch is built in with automatic switching between MDI and MDI-X for 10Base-T and 100Base-TX ports.

### **Multi-Protocol to Establish A Connection**

It supports PPPoA (RFC 2364 - PPP over ATM Adaptation Layer 5), RFC 1483 encapsulation over ATM (bridged or routed), PPP over Ethernet (RFC 2516) and IPoA (RFC1577) to establish a connection with the ISP. The product also supports VC-based and LLC-based multiplexing.

### **Quick Installation Wizard**

It supports a WEB GUI page to install this device quickly.

### **Universal Plug and Play (UPnP) and UPnP NAT Traversal**

This protocol is used to enable simple and robust connectivity among stand-alone devices and PCs from many different vendors. It makes network simple and affordable for users. UPnP architecture leverages TCP/IP and the Web to enable seamless proximity networking in addition to control and data transfer among networked devices.

### **Network Address Translation (NAT)**

It allows multi-users to access outside resources such as the Internet simultaneously with one IP address/one Internet access account. Many application layer gateway (ALG) are supported such as web browser, ICQ, FTP, Telnet, E-mail, News, Net2phone, Ping, NetMeeting, IP phone, and others.

### **Firewall**

It supports simple firewall with NAT technology and provides option for blocking access from Internet, like Telnet, FTP, TFTP, WEB, SNMP, and IGMP.

### **Domain Name System (DNS) relay**

It provides an easy way to map the domain name and IP address. When a local machine sets its DNS server with this router's IP address, every DNS



conversion request packet from the PC to this router will be forwarded to the real DNS in the outside network.

### **Dynamic Domain Name System (DDNS)**

The Dynamic DNS service allows you to alias a dynamic IP address to a static hostname. This dynamic IP address is the WAN IP address.

### **PPP over Ethernet (PPPoE)**

Provides embedded PPPoE client function to establish a connection. Users can get greater access speed without changing the operation concept, sharing the same ISP account and paying for one access account.

### **Virtual Server**

User can specify some services to be visible from outside users. The router can detect incoming service request and forward it to the specific local computer to handle it.

### **Dynamic Host Configuration Protocol (DHCP) client and server**

In the WAN site, the DHCP client can get an IP address from the Internet Service Provider (ISP) automatically. In the LAN site, the DHCP server can allocate a range of client IP addresses and distribute them including IP address, subnet mask as well as DNS IP address to local computers.

### **RIP1/2 Routing**

It supports RIP1/2 routing protocol for routing capability.

### **Simple Network Management Protocol (SNMP)**

It is an easy way to remotely manage the router via SNMP.

### **Web based GUI**

It supports web based GUI for configuration and management. It is user-friendly and comes with on-line help.

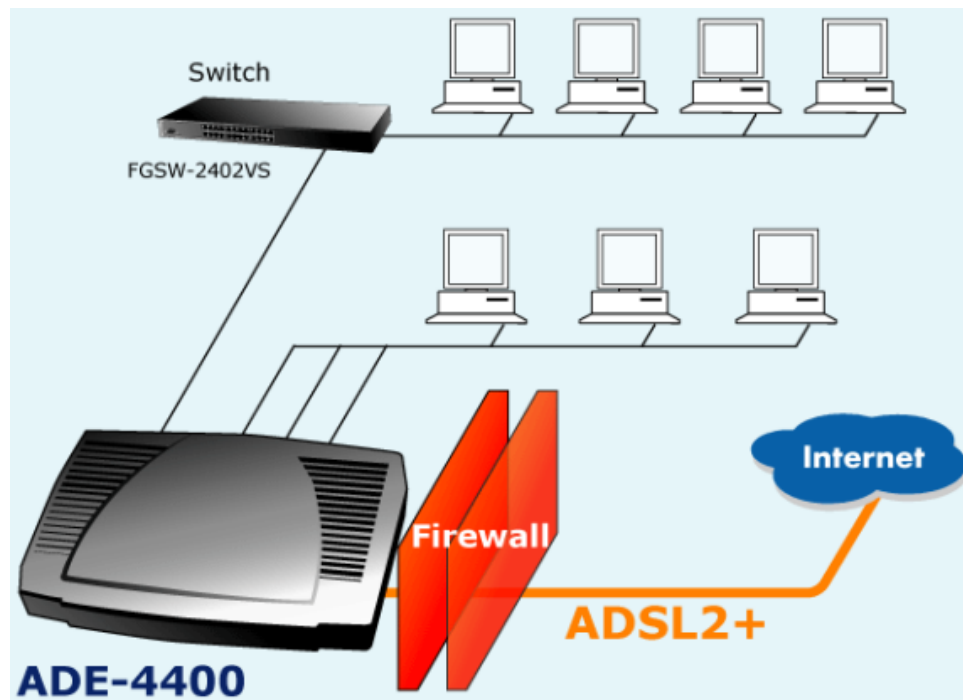
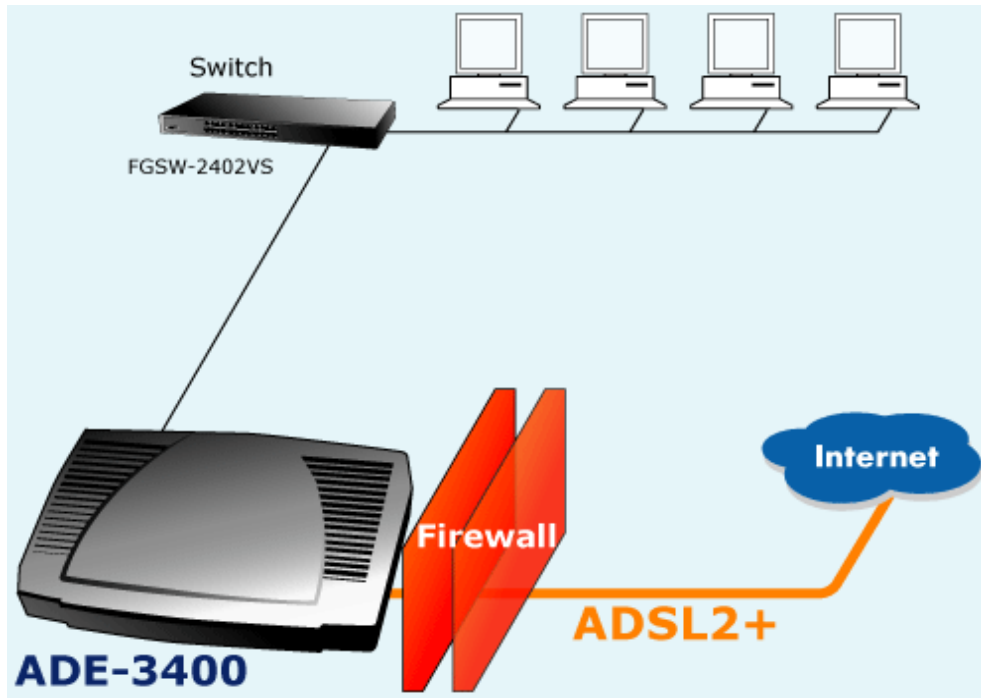
### **Firmware Upgradeable**

Device can be upgraded to the latest firmware through the WEB based GUI.

### **Rich Management Interfaces**

It supports flexible management interfaces with LAN port and WAN port. Users can use Telnet, WEB GUI, and SNMP through LAN or WAN ports to configure and manage the device.

### 1.3 Applications for the ADE-3400/4400



# Chapter 2 Product Information

## 2.1 Package Contents

ADE-3400/4400 ADSL 2/2+ Router

CD-ROM containing the online manual

Quick Installation Guide

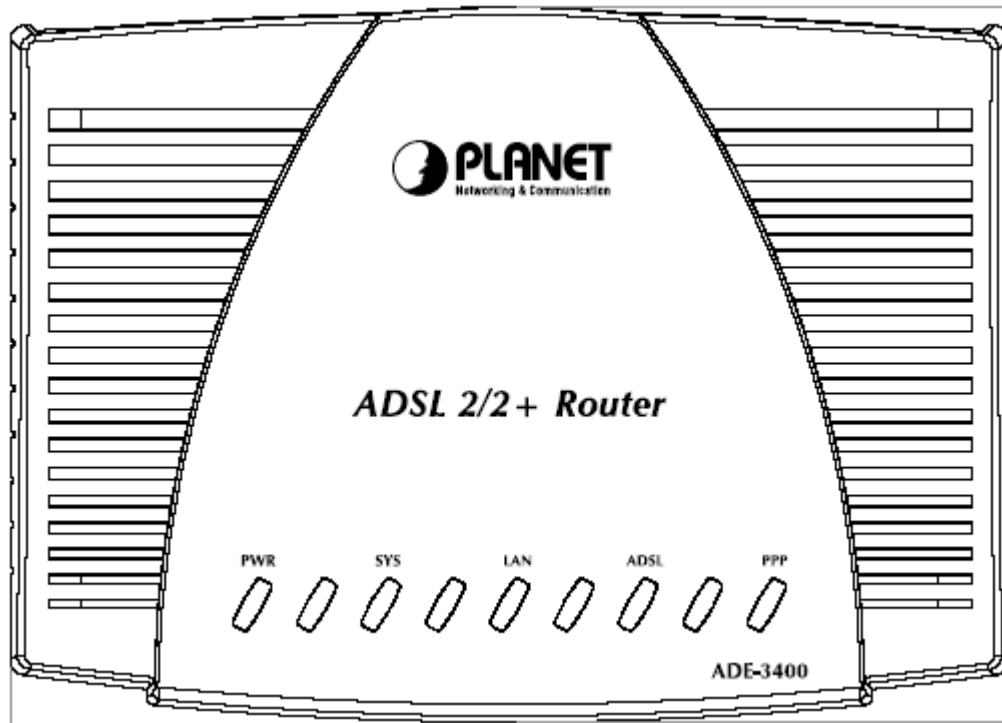
RJ-11 cable

RJ-45 cable

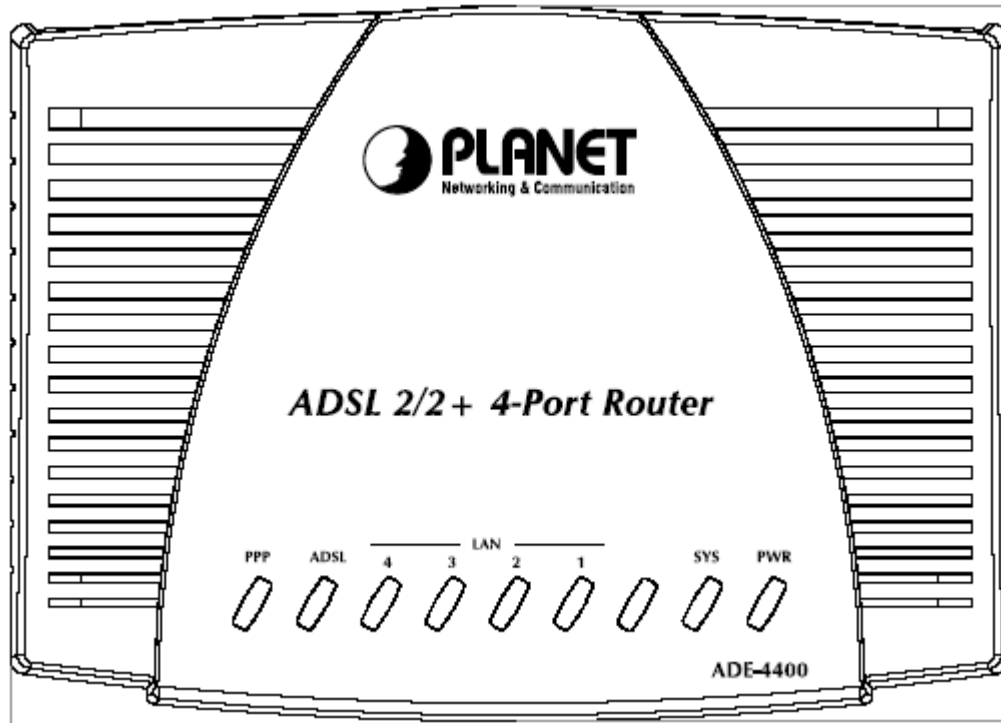
Power adapter (ADE-3400: 9V AC, 1A) / (ADE-4400: 12V DC, 1A)

## 2.2 The Top LEDs

ADE-3400



## ADE-4400

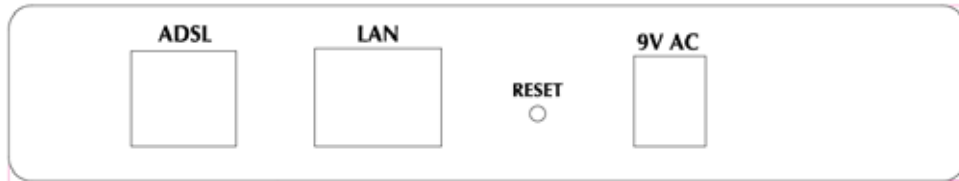


## LED Indicator

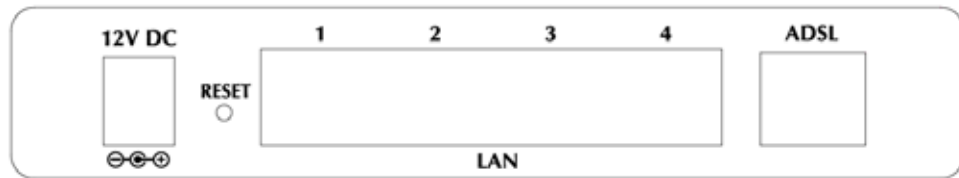
LED		Meaning
1	<b>PPP :</b>	Lit steady when there is a PPPoA / PPPoE connection.
2	<b>ADSL:</b>	Lit when successfully connected to an ADSL DSLAM ("linesync").
3	<b>LAN (1-4 for ADE-4400):</b>	Lit when connected to an Ethernet device. Green for 100Mbps; Orange for 10Mbps. Blinking when data is Transmitted / Received.
4	<b>SYS :</b>	Lit when the system is ready.
5	<b>PWR :</b>	Lit when power is ON.

## 2.3 The Rear Ports

ADE-3400



ADE-4400



### Rear panel Port and Button Definition

Port	Meaning
1	<p><b>9V AC:</b> ADE-3400 <b>12V DC:</b> ADE-4400</p> <p>Connect the supplied power adapter to this jack.</p>
2	<p><b>RESET</b></p> <p>After the device is powered on, press it to reset the device or restore to factory default settings. <b>0-3 seconds:</b> reset the device <b>6 seconds above:</b> restore to factory default settings (this is used when you can not login to the router, e.g. forgot the password)</p>
3	<p><b>LAN</b></p> <p>Connect a UTP Ethernet cable (Cat-5 or Cat-5e) to one of the four LAN ports when connecting to a PC or an office/home network of 10Mbps or 100Mbps.</p>
4	<p><b>ADSL</b></p> <p>Connect the supplied RJ-11 (“telephone”) cable to this port when connecting to the ADSL/telephone network.</p>

## 2.4 Cabling

One of the most common causes of problems is bad cabling or ADSL line(s). Make sure that all connected devices are turned on. On the top of the product is a bank of LEDs. Verify that the LAN Link and ADSL line LEDs are lit. If they are not, verify that you are using the proper cables.

Ensure that all other devices connected to the same telephone line as your Planet router (e.g. telephones, fax machines, analogue modems) have a line filter connected between them and the wall socket (unless you are using a Central Splitter or Central Filter installed by a qualified and licensed electrician). Also, ensure that all line filters are correctly installed and the right way around. Missing line filters or line filters installed the wrong way around can cause problems with your ADSL connection, including causing frequent disconnections.

## Chapter 3 Installation

The router can be configured with your web browser. A web browser is included as a standard application in the following operating systems: Windows 98/Me/NT /2000/XP, etc. The product provides a very easy and user-friendly interface for configuration.

### 3.1 Before Configuration

PCs must have an Ethernet interface installed properly and be connected to the router either directly or through an external repeater hub. PCs also have TCP/IP installed and configured to obtain an IP address through a DHCP server or a fixed IP address that must be in the same subnet as the router. The default IP address of the router is **192.168.1.254** and the subnet mask is **255.255.255.0** (i.e. any attached PC must be in the same subnet, and have an IP address in the range of 192.168.1.1 to 192.168.1.253). The best and easiest way is to configure the PC to get an IP address automatically from the router using DHCP. If you encounter any problems accessing the router's web interface, it may be advisable to **uninstall** any kind of software firewall on your PCs. They can cause problems accessing the 192.168.1.254 IP address of the router. Users should make their own decisions on how to best protect their network.

Please follow the steps below for your PC's network environment installation. First of all, please check your PC's network components. The TCP/IP protocol stack and Ethernet network adapter must be installed. If not, please refer to your Windows-related or other operating system manuals.

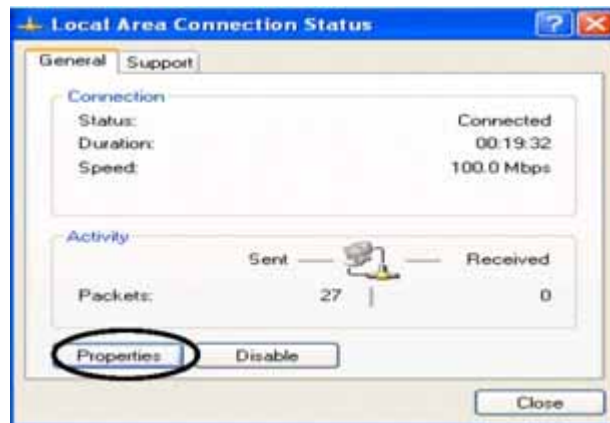
### Configuring PC in Windows XP

1. Go to **Start / Control Panel (in Classic View)**. In the Control Panel,

- double-click on **Network Connections**  
2. Double-click **Local Area Connection**.



3. In the **Local Area Connection Status** window, click **Properties**.

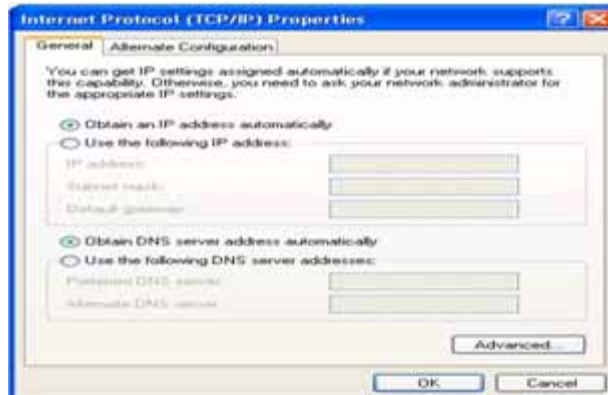


4. Select **Internet Protocol (TCP/IP)** and click **Properties**.



5. Select the **Obtain an IP address automatically** and the **Obtain DNS server address automatically** radio buttons.  
6. Click **OK** to finish the configuration.





## Configuring PC in Windows 2000

1. Go to **Start / Settings / Control Panel**. In the Control Panel, double-click on **Network and Dial-up Connections**.
2. Double-click **Local Area Connection**.



3. In the **Local Area Connection Status** window click **Properties**.

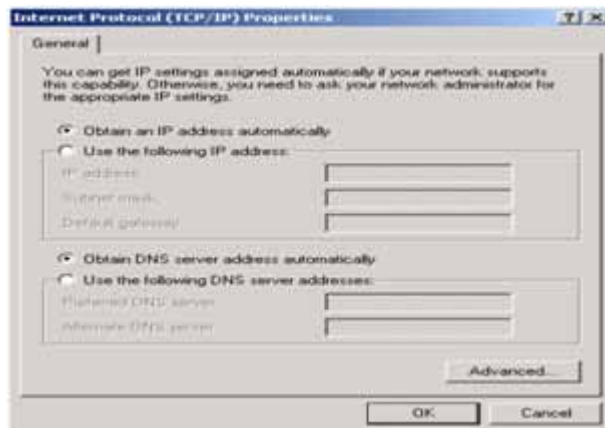


4. Select **Internet Protocol (TCP/IP)** and click **Properties**.



5. Select the **Obtain an IP address automatically** and the **Obtain DNS server address automatically** radio buttons.

6. Click **OK** to finish the configuration.



## Configuring PC in Windows 98/Me

1. Go to **Start / Settings / Control Panel**. In the Control Panel, double-click on **Network** and choose the **Configuration** tab.
2. Select **TCP/IP ->NE2000 Compatible**, or the name of your Network Interface Card (NIC) in your PC.



3. Select the **Obtain an IP address automatically** radio button.



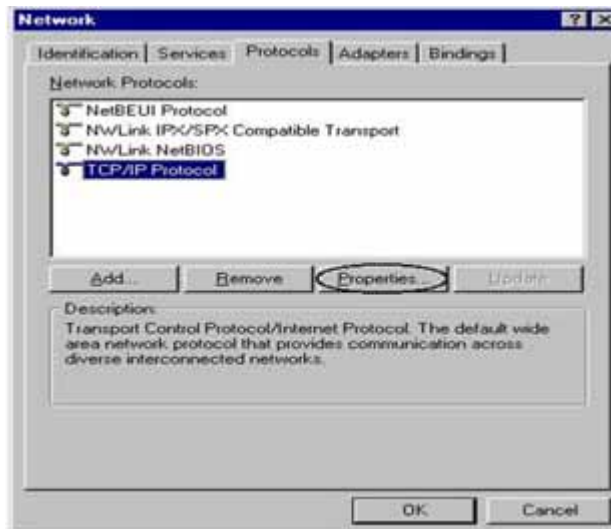
4. Then select the **DNS Configuration** tab.

5. Select the **Disable DNS** radio button and click **OK** to finish the configuration.

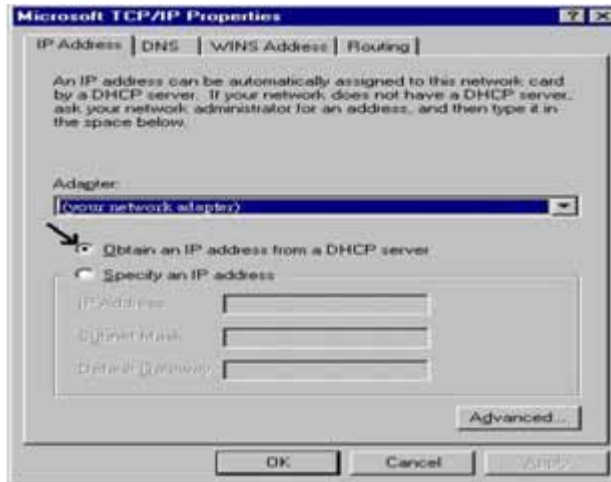


## Configuring PC in Windows NT4.0

1. Go to **Start / Settings / Control Panel**. In the Control Panel, double-click on **Network** and choose the **Protocols** tab.
2. Select **TCP/IP Protocol** and click **Properties**.



3. Select the **Obtain an IP address from a DHCP server** radio button and click **OK**.



## 3.2 Factory Default Settings

Before configuring your ADSL router, you need to know the following default settings.

### **Web Interface:**

User name: admin

Password: admin

### **LAN Device IP Settings:**

IP Address: 192.168.1.254

Subnet Mask: 255.255.255.0

### **ISP setting in WAN site:**

PPPoE

### **DHCP server:**

DHCP server is enabled.

Start IP Address: 192.168.1.100

IP pool counts: 100



**Attention**

If you ever forget the password to log in, you may press the RESET button up to 6 seconds to restore the factory default settings.

### 3.3 LAN and WAN Port Addresses

The parameters of LAN and WAN ports are pre-set in the factory. The default values are shown below.

LAN Port		WAN Port
IP address	192.168.1.254	The PPPoE function is <i>enabled</i> to automatically get the WAN port configuration from the ISP, but you have to set the username and password first.
Subnet Mask	255.255.255.0	
DHCP server function	Enabled	
IP addresses for distribution to PCs	100 IP addresses continuing from 192.168.1.100 through 192.168.1.199	

### 3.4 Information from your ISP

Before configuring this device, you have to check with your ISP (Internet Service Provider) what kind of service is provided such as PPPoE, PPPoA, RFC1483, or IPoA.

Gather the information as illustrated in the following table and keep it for reference.

<b>PPPoE</b>	VPI/VCI, VC-based/LLC-based multiplexing, Username, Password, Service Name, and Domain Name System (DNS) IP address (it can be automatically assigned by your ISP when you connect or be set manually).
<b>PPPoA</b>	VPI/VCI, VC-based/LLC-based multiplexing, Username, Password, and Domain Name System (DNS) IP address (it can be automatically assigned by your ISP when you connect or be set manually).
<b>RFC1483 Bridged</b>	VPI/VCI, VC-based/LLC-based multiplexing to use Bridged Mode.
<b>RFC1483 Routed</b>	VPI/VCI, VC-based/LLC-based multiplexing, IP address, Subnet mask, Gateway address, and Domain Name System (DNS) IP address (it is fixed IP address).

### 3.5 Configuring with your Web Browser

Open your web browser, enter the IP address of your router, which by default is **192.168.1.254**, and click “Go”, a user name and password window prompt will appear. **The default user name and password are “admin” and “admin”.**



# Chapter 4 Configuration

At the configuration homepage, the left navigation pane where bookmarks are provided links you directly to the desired setup page, including:

- **Wizard Setup** (wizard setup)
- **Advanced Setup** (Password, LAN, WAN, Wireless, NAT, Security, Dynamic DNS, Time Zone, Remote Management Control, UPnP)
- **Static Route** ( Current Route )
- **Maintenance** (System Status, DHCP Table, Diagnostic, Firmware)
- **Logout.**

Please see the relevant sections of this manual for detailed instructions on how to configure your Planet router.

## 4.1 Wizard Setup

### 4.1.1 Wizard Setup

Use the Wizard Setup screens to configure your system for Internet access settings and fill in the fields with the information in the Internet Account Information table of the Compact Guide or Read Me First. Your ISP may have already configured some of the fields in the wizard screens for you.



Wizard Setup- ISP Parameters for Internet Access	
Mode	Routing
Encapsulation	PPPoE
Multiplex	<ul style="list-style-type: none"> <li>PPPoA</li> <li>1483 Routed IP</li> <li>1483 Bridged IP</li> <li>PPPoE</li> </ul>
Virtual Circuit ID	
VPI	
VCI	32
<input type="button" value="Next"/>	

**Mode:** Select Routing (default). If your ISP allows multiple computers to share an Internet account. Otherwise select Bridge.

**Encapsulation:** Select the encapsulation type your ISP uses from the Encapsulation drop-down list box. Choose vary depending on what you select in the Mode field.

If you select Bridge in the Mode field, select 1483 Bridged IP.

If you select Routing in the Mode field, select PPPoA, 1483 Bridged IP, 1483 Router IP, or PPPoE.

**Multiplex:** Select the multiplexing method used by your ISP from the Multiplex drop-down list box either VC-based or LLC-based.

**Virtual Circuit ID:** VPI (Virtual Path Identifier) and VCI (Virtual Channel Identifier) define a virtual circuit.

**VPI:** Enter the VPI assigned to you. This field may already be configured.

**VCI:** Enter the VCI assigned to you. This field may already be configured.

#### 4.1.2 PPPoE

PPPoE ( PPP over Ethernet )provides access control and billing functionality in a manner similar to dial-up services using PPP. Select PPPoE from the Encapsulation in the first wizard screen to display the screen as shown.

### Wizard Setup- ISP Parameters for Internet Access

Mode	Routing
Encapsulation	PPPoE
Multiplex	LLC
<b>Virtual Circuit ID</b>	
VPI	0
VCI	32

Next

### Wizard Setup- ISP Parameters for Internet Access

Service Name	
User Name	username
Password	••••••••
<b>IP Address</b>	
	<input checked="" type="radio"/> Obtain an IP Address Automatically
	<input type="radio"/> Static IP Address
	0.0.0.0
<b>Connection</b>	
	<input type="radio"/> Connect on Demand: Max Idle Timeout 0 sec
	<input checked="" type="radio"/> Nailed-Up Connection
<b>Network Address Translation</b>	
	Many to One

Back Next

**Service Name:** Type the name of your PPPoE service here.

**User Name:** Enter the user name exactly as your ISP assigned.

**Password:** Enter the password associated with the user name above.

**IP Address:** Type your ISP assigned IP address in the IP Address text box below.

**Connection:** Select **Connect on Demand** when you don't want the connection up all the time and specify an idle time-out (in seconds) in the **Max. Idle Timeout** field.

**Network Address Translation:** Select **None**, **Many to One**, or **Many to Many**

from the drop-down list box. Refer to the NAT chapter (4.2.4) for more details.

### 4.1.3 1483 Routed IP

Select 1483 Router IP from the Encapsulation drop-down list box in the first wizard screen to display the screen as shown.

Wizard Setup- ISP Parameters for Internet Access	
Mode	Routing
Encapsulation	1483 Routed IP
Multiplex	LLC
Virtual Circuit ID	
VPI	0
VCI	32
Next	

Wizard Setup- ISP Parameters for Internet Access	
IP Address	0.0.0.0
Network Address Translation	Many to One
Back Next	

**IP Address:** Type your ISP assigned IP address in the IP Address text box below.

**Network Address Translation:** Select **None**, **Many to One** or **Many to Many** from the drop-down list box. Refer to the NAT chapter (4.2.4) for more details.

### 4.1.4 1483 Bridged IP

Select 1483 Bridged IP from the Encapsulation in the wizard screen to display the screen as shown.

Wizard Setup- ISP Parameters for Internet Access	
Mode	Routing ▾
Encapsulation	1483 Bridged IP ▾
Multiplex	LLC ▾
Virtual Circuit ID	
VPI	0
VCI	32
Next	

Wizard Setup- ISP Parameters for Internet Access	
IP Address	
<input checked="" type="radio"/> Obtain an IP Address Automatically <input type="radio"/> Static IP Address	
IP Address	0.0.0.0
Subnet Mask	0.0.0.0
Gateway	0.0.0.0
Network Address Translation	
Many to One ▾	
Back    Next	

**IP Address:** Type your ISP assigned IP address in the IP Address text box below.

**Subnet Mask:** Enter a subnet mask in dotted decimal notation.

**Gateway:** You must specify a gateway IP address (supplied by your ISP) when you use **1483 Bridged IP** in the **Encapsulation** field in the previous screen.

**Network Address Translation:** Select **None**, **Many to One** or **Many to Many** from the drop-down list box. Refer to the NAT chapter (4.2.4) for more details.

#### 4.1.5 PPPoA

PPPoA stands for Point to Point Protocol over ATM Adaptation Layer 5 (AAL5). It provides access control and billing functionality in a manner similar to dial-up services using PPP. Select PPPoA from the Encapsulation in the first wizard screen to display the screen as shown.

### Wizard Setup- ISP Parameters for Internet Access

Mode	Routing
Encapsulation	PPPoA
Multiplex	LLC
<b>Virtual Circuit ID</b>	
VPI	0
VCI	32
Next	

### Wizard Setup- ISP Parameters for Internet Access

User Name	username
Password	*****
<b>IP Address</b>	
	<input checked="" type="radio"/> Obtain an IP Address Automatically
	<input type="radio"/> Static IP Address
	0.0.0.0
<b>Connection</b>	
	<input type="radio"/> Connect on Demand: Max Idle Timeout 0 sec
	<input checked="" type="radio"/> Nailed-Up Connection
<b>Network Address Translation</b>	
	Many to One
Back Next	

**User Name:** Enter the user name exactly as your ISP assigned.

**Password:** Enter the password associated with the user name above.

**IP Address:** Type your ISP assigned IP address in the IP Address text box below.

**Connection:** Select **Connect on Demand** when you don't want the connection up all the time and specify an idle time-out (in seconds) in the **Max. Idle Timeout** field.

**Network Address Translation:** Select **None**, **Many to One** or **Many to Many** from the drop-down list box. Refer to the NAT chapter (4.2.4) for more details.

## 4.1.6 Wizard Setup Configuration

<b>Wizard Setup- ISP Parameters for Internet Access</b>	
<b>WAN Information:</b>	
Mode:	<b>Routing</b>
Encapsulation:	<b>PPPoE</b>
Multiplexing:	<b>LLC</b>
VPI/VCI:	<b>0/32</b>
Service Name:	
User Name:	<b>username</b>
Password:	*****
IP Address:	<b>Obtain an IP Address Automatically</b>
Network Address Translation:	<b>Many to One</b>
Connection:	<b>Nailed-Up Connection</b>
<b>LAN Information:</b>	
IP Address:	<b>192.168.1.254</b>
IP Mask:	<b>255.255.255.0</b>
DHCP:	<b>ON</b>
Client IP Pool Starting Address:	<b>192.168.1.100</b>
Size of Client IP Pool:	<b>100</b>
<input type="button" value="Change LAN Configuration"/>	
<input type="button" value="Save Settings"/>	

If you want to change your ADE-3400/4400 LAN settings, click Change LAN Configuration to display the screen as shown next.

<b>Wizard Setup- ISP Parameters for Internet Access</b>	
LAN IP Address	192.168.1.254
LAN Subnet Mask	255.255.255.0
<b>DHCP</b>	
DHCP Server	ON <input type="button" value="v"/>
Client IP Pool Starting Address	192.168.1.100
Size of Client IP Pool	100
Primary DNS Server	0.0.0.0
Secondary DNS Server	0.0.0.0
<input type="button" value="Back"/> <input type="button" value="Finish"/>	

**LAN IP Address:** Enter the IP address of ADE-3400/4400 in dotted decimal notation, for example, 192.168.1.254 (factory default).

**LAN Subnet Mask:** Enter a subnet mask in dotted decimal notation.

**DHCP Server:** From the **DHCP Server** drop-down list box, select **On** to allow ADSL Router to assign IP addresses, an IP default gateway and DNS servers to computer systems that support the DHCP client. Select **Off** to disable DHCP server. When DHCP server is used, set the following items:

**Client IP Pool Starting Address:** This field specifies the first of the contiguous addresses in the IP address pool.

**Size of Client IP Pool:** This field specifies the size or count of the IP address pool.

**Primary DNS Server:** Enter the IP addresses of the DNS servers. The DNS servers are passed to the DHCP clients along with the IP address and the subnet mask.

**Secondary DNS Server:** Enter the IP addresses of the DNS servers. The DNS servers are passed to the DHCP clients along with the IP address and the subnet mask.

The ADE-3400/4400 automatically tests the connection to the computer(s) connected to the LAN ports. To test the connection from the ADSL Router to the ISP, click **Start Diagnose**. Otherwise click Return to Main Menu to go back to the Site Map screen.

**Wizard Setup- ISP Parameters for Internet Access**

Your DSL Gateway is now configured. Your device is capable of testing your DSL service. The individual tests are listed below. Click "Start Diagnose" button if you want to test; otherwise, click "Return to Main Menu" button.


**LAN connections**

Test your Ethernet Connection	<b>PASS</b>
-------------------------------	-------------

**WAN connections**

Test ADSL synchronization	<b>N/A</b>
Test ADSL(ATM OAM) loopback test	<b>N/A</b>
Test PPP/PPPoE server connection	<b>N/A</b>
Ping default gateway	<b>N/A</b>

Start Diagnose      Return to Main Menu

**NOTE:**  If you cannot access the Internet, open the web configurator again to confirm that the Internet settings you configured in the Wizard Setup are correct.

## 4.2 Advanced setup

### 4.2.1 Password

In factory setting, the default password is **admin**. You can change the default password to ensure that someone cannot adjust your settings without your permission. Every time you change your password, please record the password and keep it at a safe place.



### Password

Old Password	<input type="text"/>
New Password	<input type="text"/>
Retype to confirm	<input type="text"/>

**Please record your new password whenever you change it. The system will lock you out if you have forgotten your password.**

**Old Password:** Type the default password or the existing password you use to access the system in this field.

**New Password:** Type the new password in this field

**Retype to confirm:** Type the new password again in this field.

## 4.2.2 LAN

Click LAN to open the following screen.

### LAN - Setup

DHCP	
DHCP	Server <input type="button" value="v"/>
Client IP Pool Starting Address	192.168.1.100
Size of Client IP Pool	100
Primary DNS Server	0.0.0.0
Secondary DNS Server	0.0.0.0
Remote DHCP Server	N/A
TCP/IP	
IP Address	192.168.1.254
IP Subnet Mask	255.255.255.0
RIP Direction	None <input type="button" value="v"/>
RIP Version	N/A <input type="button" value="v"/>
Multicast	None <input type="button" value="v"/>

## **DHCP:**

If set to **Server**, your ADE-3400/4400 can assign IP addresses, an IP default gateway, and DNS servers to Windows 95/NT and other systems that support the DHCP client.

If set to **None**, the DHCP server will be disabled.

If set to **Relay**, the ADE-3400/4400 acts as a surrogate DHCP server and relays DHCP requests and responses between the remote server and the clients. Enter the IP address of the actual, remote DHCP server in the Remote DHCP Server field in this case.

When DHCP is used, the following items need to be set.

**Client IP Pool Starting Address:** This field specifies the first of the contiguous addresses in the IP address pool.

**Size of Client IP Pool:** This field specifies the size or count of the IP address pool.

**Primary DNS Server:** Enter the IP addresses of the DNS servers. The DNS servers are passed to the DHCP clients along with the IP address and the subnet mask.

**Secondary DNS Server:** Enter the IP addresses of the DNS servers. The DNS servers are passed to the DHCP clients along with the IP address and the subnet mask.

**Remote DHCP Server:** If **Relay** is selected in the **DHCP** field above then enter the IP address of the actual remote DHCP server here.

## **TCP/IP:**

**IP Address:** Enter the IP address of ADSL Router in dotted decimal notation, for example, 192.168.1.254 (factory default).

**IP Subnet Mask:** The default is 255.0.0.0. User can change it to other such as 255.255.255.0. Type the subnet mask assigned to you by your ISP (if given).

**RIP Direction:** Select the RIP direction from None, Both, In Only, and Out Only.

**RIP Version:** Select the RIP version from RIP-1, RIP-2B, and RIP-2M.

**Multicast:** IGMP (Internet Group Multicast Protocol) is a network-layer protocol used to establish membership in a Multicast group. It is not used to carry user data. The Planet ADE-3400/4400 supports both IGMP version 1 (IGMP-v1) and IGMP-v2. Select None to disable it.

### 4.2.3 WAN Setup

A WAN (Wide Area Network) is an outside connection to another network or the Internet. It allows the user to set the configuration for the WAN/ADSL ports.

To change ADE-3400/4400 WAN remote node settings, click WAN.

**WAN - WAN List**

Route

Bridge

Half Bridge

	Name	Active	Mode	VPI	VCI	Encap	IP Address
<b>Profile 1</b>	isp	Yes	Route	0	32	PPPoE	Dynamic
<b>Profile 2</b>	-	-	-	-	-	-	-
<b>Profile 3</b>	-	-	-	-	-	-	-
<b>Profile 4</b>	-	-	-	-	-	-	-
<b>Profile 5</b>	-	-	-	-	-	-	-
<b>Profile 6</b>	-	-	-	-	-	-	-
<b>Profile 7</b>	-	-	-	-	-	-	-
<b>Profile 8</b>	-	-	-	-	-	-	-

## Half Bridge

Name	isp
Active	Yes
Mode	Routing
Encapsulation	PPPoE
Multiplex	LLC
<b>Virtual Circuit ID</b>	
VPI	0
VCI	32
ATM QoS Type	UBR
<b>Cell Rate</b>	
Peak Cell Rate	0 cell/sec
Sustain Cell Rate	0 cell/sec
Maximum Burst Size	0
<b>Login Information</b>	
Service Name	
User Name	username
Password	*****
<b>IP Address</b>	
<input checked="" type="radio"/> Obtain an IP Address Automatically	
<input type="radio"/> Static IP Address	
IP Address	0.0.0.0
Subnet Mask	0.0.0.0
Gateway	0.0.0.0
<b>Connection</b>	
<input type="radio"/> Connect on Demand: Max Idle Timeout 0 sec	
<input checked="" type="radio"/> Nailed-Up Connection	
<b>TCP MSS Option</b>	
TCP MSS (0 means use default)	0 bytes
<input type="button" value="Back"/> <input type="button" value="Apply"/> <input type="button" value="Reset"/>	

**Name:** Enter the name of your Internet Service Provider

**Mode:** Select Routing (default) or Bridge

**Encapsulation:** Select Bridge in the Mode field and select either PPPoA or RFC 1483. Select Routing in the Mode field and select PPPoA, RFC 1483, ENET ENCAP, or PPPoE.

**Multiplex:** Select the method of multiplexing used by your ISP. Choose VC or LLC.

**Virtual Circuit ID:** VPI and VCI define a virtual circuit.

VPI: The valid range for the VPI is 0 to 255

VCI: The valid range for the VCI is 32 to 65535

**ATM QoS Type:** Select **CBR** to specify fixed (always-on) bandwidth for voice or data traffic. Select **UBR** for applications that are non-time sensitive, such as e-mail. Select **VBR** for burst traffic and bandwidth sharing with other applications.

**Cell Rate:** Cell rate configuration often helps eliminate traffic congestion that slows transmission of real time data such as audio and video connections.

Peak Cell Rate: Divide the DSL line rate (bps) by 424 (the size of an ATM cell) to find the Peak Cell Rate (PCR).

Sustain Cell Rate: The Sustain Cell Rate (SCR) sets the average cell rate (long-term) that can be transmitted.

Maximum Burst Size: Maximum Burst Size (MBS) refers to the maximum number of cells that can be sent at the peak rate.

**Login Information:** PPPoA and PPPoE encapsulation only.

Service Name: Type the name of your PPPoE service here.

User Name: Enter the user name exactly as your ISP assigned.

Password: Enter the password provide by your ISP.

**Connection:** The schedule rules have priority over your Connection settings.

Nailed-Up Connection: Select Nailed-Up Connection when you want your connection up all the time.

Connect on Demand: Select Connect on Demand when you don't want the connection up all the time and specify an idle time-out in the Max Idle Timeout field.

Max Idle Timeout: Specify an idle time-out in the Max Idle Timeout field

**TCP MSS Option:** This will increase the current MSS limit to the number specified, hence the tweak test will report Max Packet Size as the specified number plus 40.

#### 4.2.4 NAT

The NAT (Network Address Translation - NAT, RFC 1631) is the translation of the IP address of a host in a packet. The default setting is **Dynamic NAPT**. It provides dynamic Network Address Translation capability between LAN and

multiple WAN connections. The LAN traffic is routed to appropriate WAN connections based on the destination IP addresses and Route Table. This eliminates the need for the static NAT session configuration between multiple LAN clients and multiple WAN connections.

#### 4.2.4.1 Selecting the NAT Mode

NAT - Mode	
Network Address Translation	
<input type="radio"/> None	
<input checked="" type="radio"/> Many to One	<a href="#">Edit Details</a>
<input type="radio"/> Many to Many	<a href="#">Edit Details</a>

**None:** Select this radio button to disable NAT

**Many to One:** Select this radio button if you have just one public WAN IP address for your router.

Edit Details: Click this link to go to the NAT - Edit Port Mapping rule screen.

**Many to Many:** Select this radio button if you have multiple public WAN IP addresses for your router.

Edit Details: Click this link to go to the NAT - Address Mapping Rules screen.

#### 4.2.4.2 Configuring Edit Port Mapping

Click NAT, Select Many to One and click Edit Details to open the following screen.

NAT - Edit Port Mapping Rule			
	Start Port No.	End Port No.	IP Address
1	All ports	All ports	0.0.0.0
2	0	0	0.0.0.0
3	0	0	0.0.0.0
4	0	0	0.0.0.0
5	0	0	0.0.0.0
6	0	0	0.0.0.0
7	0	0	0.0.0.0
8	0	0	0.0.0.0
9	0	0	0.0.0.0
10	0	0	0.0.0.0
11	0	0	0.0.0.0
12	0	0	0.0.0.0

**Start Port No.:** Enter a port number in this field.

**End Port No.:** Enter a port number in this field.

**IP Address:** Enter your server IP address in this field.

#### 4.2.4.3 Configuring Address Mapping

To change your ADE-3400/4400 address mapping settings, click NAT, Select Many to Many and click Edit Details to open the following screen.

NAT - Address Mapping Rules					
	Local Start IP	Local End IP	Global Start IP	Global End IP	Type
Rule 1	...	...	...	...	-
Rule 2	...	...	...	...	-
Rule 3	...	...	...	...	-
Rule 4	...	...	...	...	-
Rule 5	...	...	...	...	-
Rule 6	...	...	...	...	-
Rule 7	...	...	...	...	-
Rule 8	...	...	...	...	-
Rule 9	...	...	...	...	-
Rule 10	...	...	...	...	-

Back

**Local Start IP:** This is the starting Inside Local IP Address. Local IP addresses are N/A for Server port mapping.

**Local End IP:** This is the end Inside Local IP Address (ILA). If your rule is for all local IP addresses, then enter 0.0.0.0 as the Local Start IP address and 255.255.255.255 as the Local End IP address. This field is N/A for One-to-one and Server mapping types.

**Global Start IP:** This is the starting Inside Global IP Address (IGA). Enter 0.0.0.0 here if you have a dynamic IP address from your ISP. You can only do this for Many-to-One and Server mapping types.

**Global End IP:** This is the ending Inside Global IP Address (IGA). This field is N/A for One-to-one, Many-to-One and Server mapping types.

**Type:**

1-1: One-to-one mode maps one local IP address to one global IP address. Note that port numbers do not change for the One-to-one NAT mapping type.

M-1: Many-to-One mode maps multiple local IP addresses to one global IP address. This is equivalent to Many to One (i.e., PAT, port address translation).

M-M Ov (Overload): Many-to-Many Overload mode maps multiple local IP addresses to shared global IP addresses.

MM No (No Overload): Many-to-Many No Overload mode maps each local IP address to unique global IP addresses.

Server: This type allows you to specify inside servers of different services behind



the NAT to be accessible to the outside world.

#### 4.2.4.4 Editing an Address Mapping Rule

To edit an address mapping rule, click the rule's link in the NAT Address Mapping Rules screen to display the screen shown next.

NAT - Edit Address Mapping Rule 1	
Type	One-to-One <input type="button" value="v"/>
Local Start IP	0.0.0.0
Local End IP	N/A
Global Start IP	0.0.0.0
Global End IP	N/A
Server Mapping Set	N/A <input type="button" value="v"/> <a href="#">Edit Details</a>
<input type="button" value="Apply"/> <input type="button" value="Reset"/> <input type="button" value="Delete"/>	

#### Type:

1-1: One-to-one mode maps one local IP address to one global IP address. Note that port numbers do not change for the One-to-one NAT mapping type.

M-1: Many-to-One mode maps multiple local IP addresses to one global IP address. This is equivalent to Many to One (i.e., PAT, port address translation). M-M Ov (Overload): Many-to-Many Overload mode maps multiple local IP addresses to shared global IP addresses.

MM No (No Overload): Many-to-Many No Overload mode maps each local IP address to unique global IP addresses.

Server: This type allows you to specify inside servers of different services behind the NAT to be accessible to the outside world.

**Local Start IP:** This is the starting Inside Local IP Address (ILA). Local IP addresses are N/A for Server port mapping.

**Local End IP:** This is the end Inside Local IP Address (ILA). If your rule is for all local IP addresses, then enter 0.0.0.0 as the Local Start IP address and 255.255.255.255 as the Local End IP address. This field is N/A for One-to-one and Server mapping types.

**Global Start IP:** This is the starting Inside Global IP Address (IGA). Enter 0.0.0.0 here if you have a dynamic IP address from your ISP.

**Global End IP:** This is the ending Inside Global IP Address (IGA). This field is N/A for One-to-one, Many-to-One and Server mapping types.

**Server Mapping Set:** Only available when Type is set to Server.

Select a number from 1 to 10 from the drop-down menu to choose a server set from the NAT

- Address Mapping Rules screen.

Edit Details: Click this link to go to the NAT - Edit Port Mapping rule screen to edit a server set that you have selected in the Server Mapping Set field.

## 4.2.5 Security

Inbound directions of Packet Filter rules prevent unauthorized computers or applications accessing your local network from the Internet.

You can choose all filter rules by yourself, and the security is offer to some sections: Telnet, FTP, TFTP, Web, SNMP, and Ping.

Internet Security	
Your device provides the following filter rules	
<input type="checkbox"/> Telnet	Telnet traffic is blocked from the WAN to the LAN
<input type="checkbox"/> FTP	FTP traffic is blocked from the WAN to the LAN
<input type="checkbox"/> TFTP	TFTP traffic is blocked from the WAN to the LAN
<input type="checkbox"/> Web	Web traffic is blocked from the WAN to the LAN
<input type="checkbox"/> SNMP	SNMP traffic is blocked from the WAN
<input type="checkbox"/> Ping	Ping traffic is blocked from the WAN

Apply   Reset

## 4.2.6 Dynamic DNS

The Dynamic DNS function allows you to alias a dynamic IP address to a static hostname, allowing users whose ISP does not assign them a static IP address to use a domain name. This is especially useful for hosting servers via your ADSL connection, so that anyone wishing to connect to you may use your domain name. It rather than uses your dynamic IP address which changes from time to time. This dynamic IP address is the WAN IP address of the router, which is assigned to you by your ISP.

You will first need to register and establish an account with the Dynamic DNS provider using their website, for example <http://www.dyndns.org/>

<b>Dynamic DNS</b>	
<input type="checkbox"/> Active	
Service Provider	WWW.DynDNS.ORG ▾
Host Name	<input type="text"/>
E-mail Address	<input type="text"/>
User	<input type="text"/>
Password	<input type="text"/>
<input type="checkbox"/> Enable Wildcard	
<input type="button" value="Apply"/>	<input type="button" value="Reset"/>

**Active:** Select this check box to use dynamic DNS.

**Service Provider:** Select the name of your Dynamic DNS service provider.

**Host Name:** Type the domain name assigned to your Planet ADE-3400/4400 by your Dynamic DNS provider.

**E-mail Address:** Type your e-mail address.

**User:** Type your user name.

**Password:** Type the password assigned to you.

**Enable Wildcard:** Select this check box to enable DYNDNS Wildcard.

## 4.2.7 Time Zone

The router does not have a real time clock on board; instead, it uses the Simple

Network Time Protocol (SNTP) to get the current time from an SNTP server outside your network. Choose your local time zone. After a successful connection to the Internet, the router will retrieve the correct local time from the SNTP server you have specified. If you prefer to specify an SNTP server other than those in the drop-down list, simply enter its IP address as shown above. Your ISP may provide an SNTP server for you to use.

Time Zone	
<b>Time Server</b>	
Use Time Server when Bootup	None <input type="button" value="v"/>
Time Server IP Address	N/A
Time Zone	(GMT) Greenwich Mean Time : Dublin, Edinburgh, Lisbon, London <input type="button" value="v"/>
<input type="checkbox"/> Daylight Saving	
Start Date	1 month 1 day
End Date	1 month 1 day
<input type="checkbox"/> Calibrate system clock with Time Server now.	
(Attention! This may take up to 60 seconds if Time Server is unreachable).	
<b>Date</b>	
Current Date	2000 - 01 - 01
New Date (yyy-mm-dd)	2000 - 01 - 01
<b>Time</b>	
Current Time	00 : 29 : 11
New Time	00 : 29 : 11
<input type="button" value="Apply"/> <input type="button" value="Reset"/>	

### Time Server:

**Use Time Server when Bootup:** Select the time service protocol that your time server sends when you turn on the Router. Not all time servers support all protocols, so you may have to check with your ISP/network administrator or use trial and error to find a protocol that works. The main difference between them is the format.

**Daytime (RFC 867)** format is day/month/year/time zone of the server.

**Time (RFC 868)** format displays a 4-byte integer giving the total number of seconds since 1970/1/1 at 0:0:0.

The default, **NTP (RFC 1305)**, is similar to Time (RFC 868).

Select **None** to enter the time and date manually.

**Time Server IP Address:** Enter the IP address of your time server. Check with your ISP/network administrator if you are unsure of this information.

**Time Zone:** Choose the time zone of your location. This will set the time difference between your time zone and Greenwich Mean Time (GMT).

**Daylight Savings:** Select this option if you use daylight savings time. Daylight saving is a period from late spring to early fall when many countries set their clocks ahead of normal local time by one hour to give more daytime light in the evening.

**Start Date:** Enter the month and day that your daylight-savings time starts on if you selected **Daylight Savings**.

**End Date:** Enter the month and day that your daylight-savings time ends on if you selected **Daylight Savings**.

**Calibrate system clock with Time Server now:** Click this button to have your Router use the time server (that you configured above) to set its internal system clock. Please wait for up to 60 seconds while the ADE-3400/4400 locates the time server. If the ADE-3400/4400 cannot find the time server, please check the time server protocol and its IP address. If the IP address was entered correctly, try pings it to test the connection.

## Date

**Current Date:** This field displays the date of your ADE-3400/4400.

Each time you reload this page, the router synchronizes the time with the time server.

**New Date (yyyy-mm-dd):** This field displays the last updated date from the time server. When you select **None** in the **Use Time Server when Bootup** field, enter the new date in this field and then click **Apply**.

## Time

**Current Time:** This field displays the time of your router. Each time you reload this page, the ADE-3400/4400 synchronizes the time with the time server.

**New Time:** This field displays the last updated time from the time server.

When you select **None** in the **Use Time Server when Bootup** field, enter the new time in this field and then click **Apply**.

## 4.2.8 Remote Management

Remote management allows you to determine which services/protocols can access which ADE-3400/4400 interface from which computers.

You can configure the router for remote Telnet access or upload and download router firmware and configuration files using FTP. To use this feature, your computer must have an FTP client. You can use the ADE-3400/4400's embedded web configuration for configuration and file management.

Remote Management Control			
Server Type	Access Status	Port	Secured Client IP
Telnet	All <input type="button" value="v"/>	23	0.0.0.0
FTP	All <input type="button" value="v"/>	21	0.0.0.0
Web	All <input type="button" value="v"/>	80	0.0.0.0

**Server Type:** Each of these labels denotes a service that you may use to remotely manage the Planet ADE-3400/4400.

**Access Status:** Select the access interface. Choices are **All**, **LAN Only**, **WAN Only** and **Disable**.

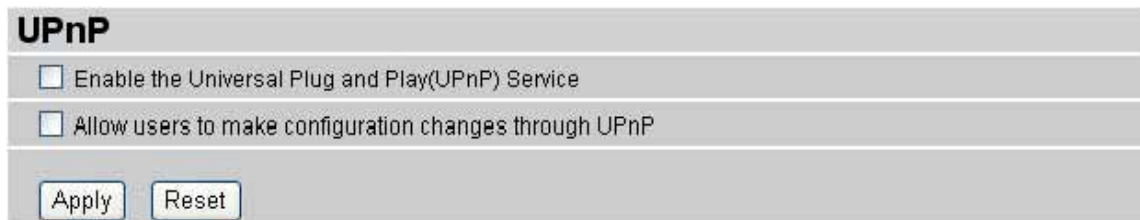
**Port:** This field shows the port number for the remote management service. You may change the port number for a service in this field, but you must use the same port number to use that service for remote management.

**Secured Client IP:** The default 0.0.0.0 allows any client to use this service to remotely manage the ADE-3400/4400. Type an IP address to restrict access to a client with a matching IP address.

## 4.2.9 UPnP

UPnP offers peer-to-peer network connectivity for PCs and other network devices, along with control and data transfer between devices. UPnP offers many

advantages for users running NAT routers through UPnP NAT Traversal, and on supported systems makes tasks such as port forwarding much easier by letting the application control the required settings, removing the need for the user to control advanced configuration of their device. Both the user's Operating System and the relevant application must support UPnP in addition to the router. Windows XP and Windows Me natively support UPnP (when the component is installed), and Windows 98 users may install the Internet Connection Sharing client from Windows XP in order to support UPnP. Windows 2000 does not support UPnP.



**Enable the Universal Plug and Play (UPnP) Service:** Select this checkbox to activate UPnP. Be aware that anyone could use an UPnP application to open the web configuration's login screen without entering the ADE-3400/4400's IP address.

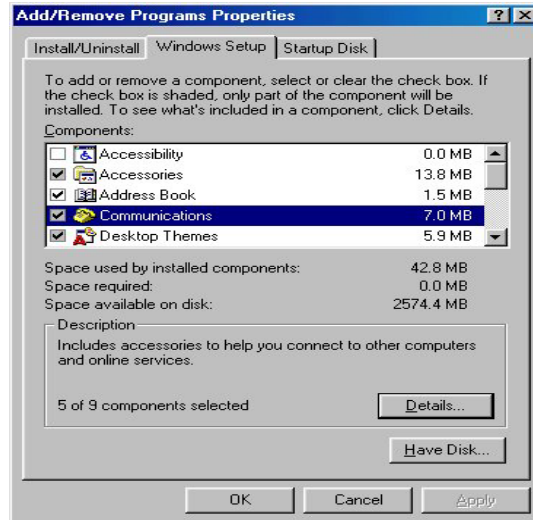
**Allow users to make configuration changes through UPnP:** Select this checkbox to allow UPnP-enabled applications to automatically configure the ADE-3400/4400 so that they can communicate through the ADE-3400/4400. For example by using NAT traversal, UPnP applications automatically reserve a NAT forwarding port in order to communicate with another UPnP enabled device. This eliminates the need to manually configure port forwarding for the UPnP enabled application.

## An Example for Installing UPnP in Windows

Follow the steps below to install the UPnP in **Windows Me**.

**Step 1.** Click Start and Control Panel. Double-click Add/Remove Programs.

**Step 2.** Click on the Windows Setup tab and select Communication in the Components selection box. Click Details.



**Step 3.** In the Communications window, select the Universal Plug and Play check box in the Components selection box.



**Step 4.** Click OK to go back to the Add/Remove Programs Properties window and click Next.

**Step 5.** Restart the computer when prompted.

Follow the steps below to install the UPnP in **Windows XP**.

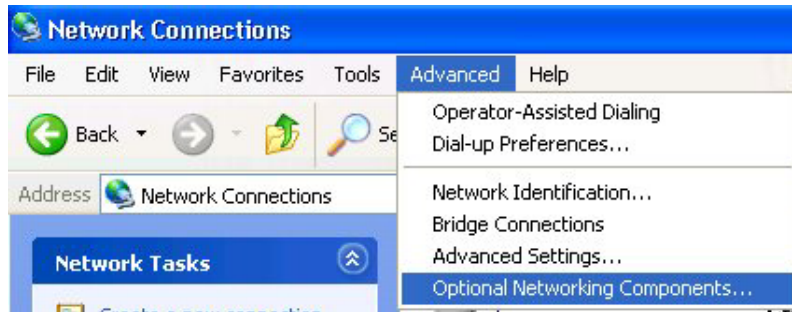
**Step 1.** Click Start and Control Panel.

**Step 2.** Double-click Network Connections.

**Step 3.** In the Network Connections window, click Advanced in the main menu

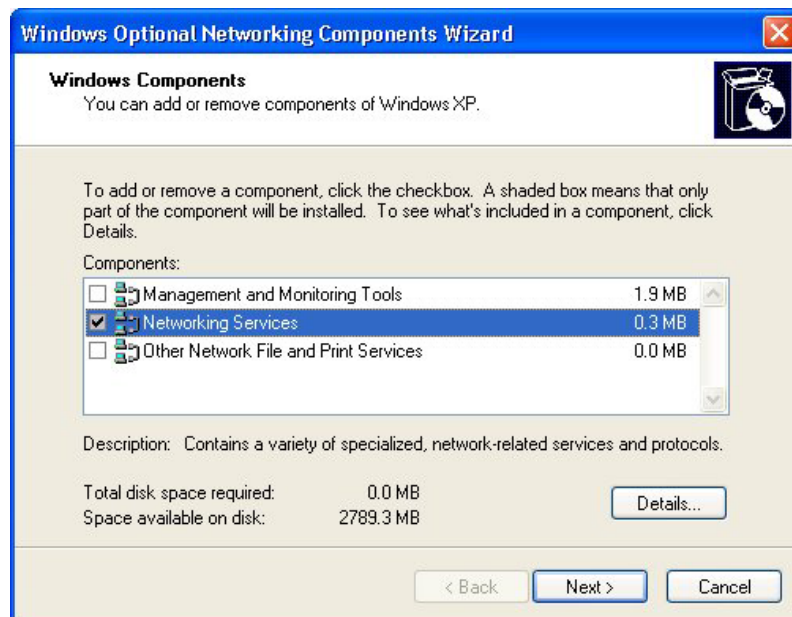


and select Optional Networking Components ....



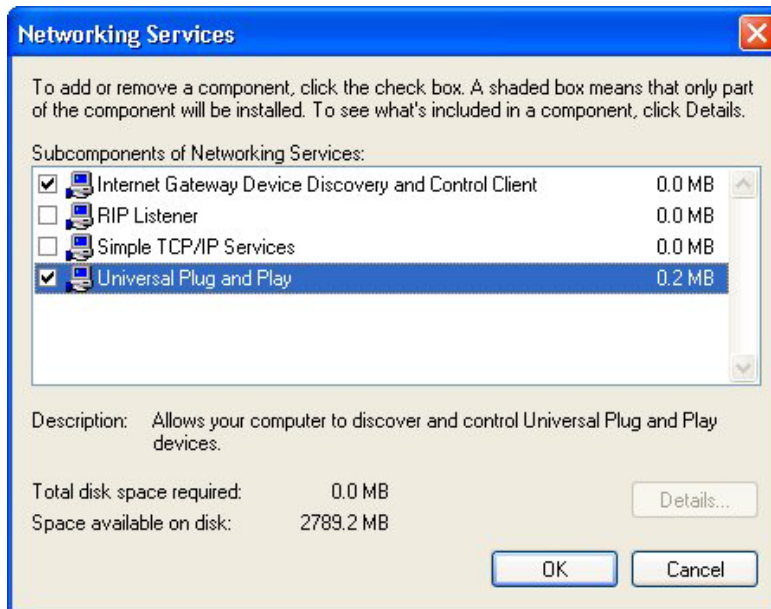
The Windows Optional Networking Components Wizard window displays.

**Step 4.** Select Networking Service in the Components selection box and click Details.



**Step 5.** In the Networking Services window, select the Universal Plug and Play check box.

**Step 6.** Click OK to go back to the Windows Optional Networking Component Wizard window and click Next.



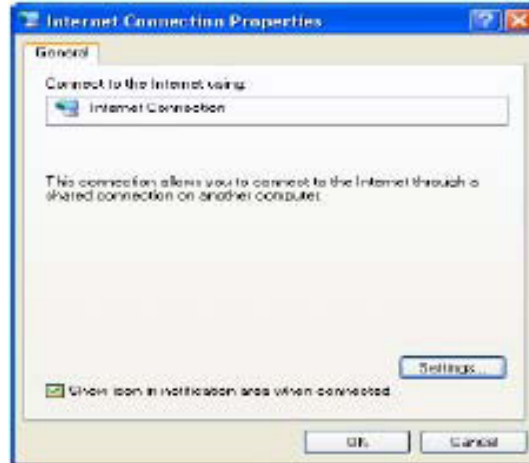
## Auto-discover Your UPnP-enabled Network Device

**Step 1.** Click start and Control Panel. Double-click Network Connections. An icon displays under Internet Gateway.

**Step 2.** Right-click the icon and select Properties.



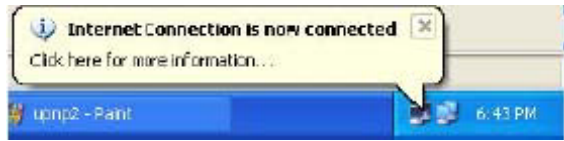
**Step 3.** In the Internet Connection Properties window, click Settings to see the port mappings there were automatically created.



**Step 4.** You may edit or delete the port mappings or click Add to manually add port mappings.



**Step 5.** Select Show icon in notification area when connected option and click OK. An icon displays in the system tray



**Step 6.** Double-click on the icon to display your current Internet connection status.



## Web Configurator Easy Access

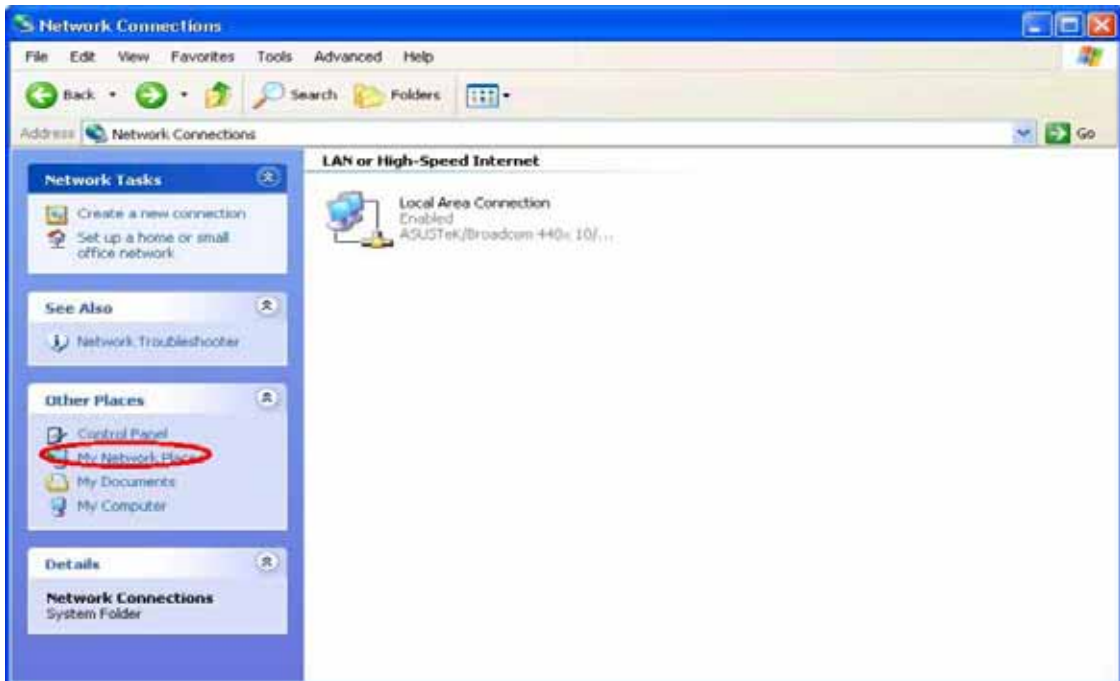
With UPnP, you can access the web-based configurator on the ADE-3400/4400 without finding out the IP address of the ADE-3400/4400 first. This is helpful if you do not know the IP address of the ADE-3400/4400.

Follow the steps below to access the web configurator.

**Step 1.** Click Start and then Control Panel.

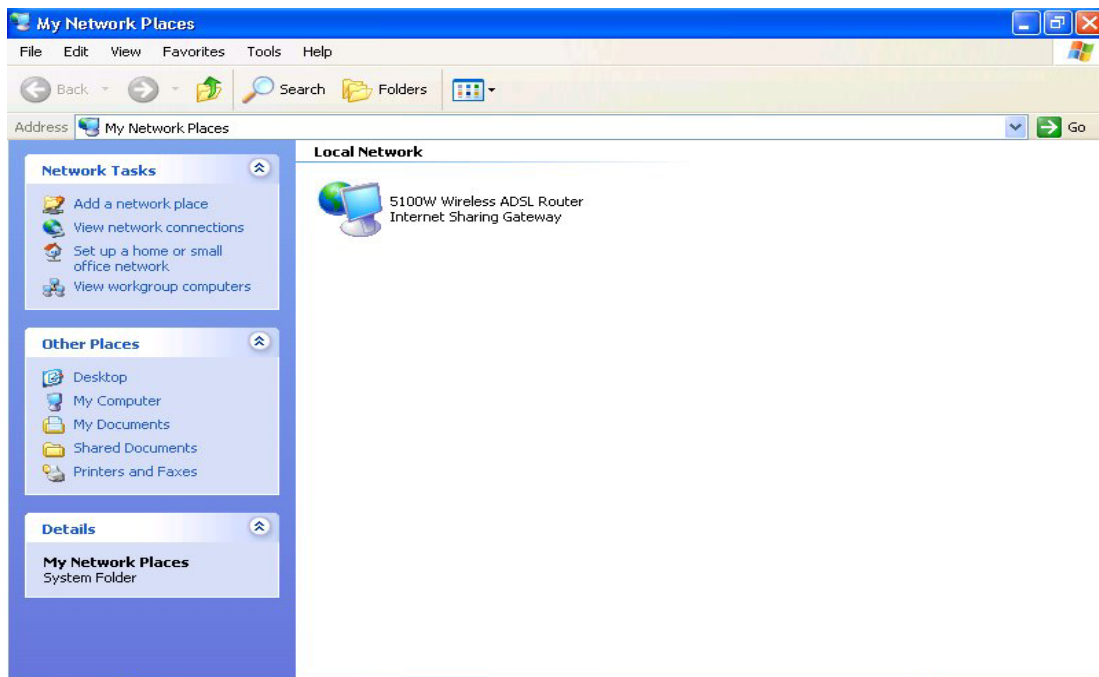
**Step 2.** Double-click Network Connections.

**Step 3.** Select My Network Places under Other Places.



**Step 4.** An icon with the description for each UPNP-enabled device displays under Local Network.

**Step 5.** Right-click on the icon for your ADE-3400/4400 and select Invoke. The web configurator login screen displays.



**Step 6.** Right-click on the icon for your ADE-3400/4400 and select Properties. A properties window displays with basic information about the ADE-3400/4400.

## 4.3 Static Route

### 4.3.1 Current Route

If you have another router with a LAN-to-LAN connection, you may create a static routing on the router that is the gateway to Internet.

Static Route List	
	Route Name
Route 1	
Route 2	
Route 3	
Route 4	
Route 5	
Route 6	
Route 7	
Route 8	
Route 9	

Static Route - Route 1	
Active	No <input type="button" value="v"/>
Name	<input type="text"/>
Destination IP	<input type="text" value="0.0.0.0"/>
Subnet Mask	<input type="text" value="0.0.0.0"/>
Gateway IP	<input type="text" value="0.0.0.0"/>
Metric	<input type="text" value="0"/>
Private	No <input type="button" value="v"/>

**Active:** Whether the connection is currently active.

**Name:** Enter the name of your Internet Service Provider

**Destination IP** : This is the destination subnet IP address.

**Subnet Mask** : It is the destination IP address based on above destination subnet IP.

**Gateway IP** : This is the gateway IP address to which packets are to be forwarded.

**Metric** : It represents the cost of transmission for routing purposes. The number need not be precise, but it must be between 1 to 15.

**Private** : This parameter determines if the Prestige will include the route to the remote node in its RIP broadcasts. Set “Yes”, it keeps private and is not included in RIP broadcasts. Set “No”, the remote node will be propagated to other hosts through RIP broadcasts.

## **4.4 Maintenance**

Use the maintenance screens to view system information, upload new firmware, manage configuration and restart your ADE-3400/4400.

## 4.4.1 System Status

System Status	
<b>System Status</b>	
System Name :	router
RAS F/W Version:	2.2.29(WS2.B2)3.0.11
DSL FW Version:	TrendChip, FwVer:3.0.11.16_A_TC HwVer:T14.F7_0.G.DMT
Standard:	G.DMT
<b>WAN Information:</b>	
IP Address:	0.0.0.0
IP Subnet Mask:	0.0.0.0
Default Gateway:	0.0.0.0
Primary DNS:	0.0.0.0
Secondary DNS:	0.0.0.0
VPI/VCI:	0/ 32
<b>LAN Information:</b>	
MAC Address:	00:30:4F:01:23:45
IP Address:	192.168.1.254
IP Subnet Mask:	255.255.255.0
DHCP:	Server
DHCP Start IP:	192.168.1.100
DHCP Pool Size:	32
<input type="button" value="Show Statistics"/>	

### System Status:

**System Name:** This is the name of the router. It is for identification purposes.

**RAS F/W Version:** This is the firmware version and the date created.

**DSL FW Version:** This is the DSL firmware version associated with your router.

**Standard:** This is the standard that the router is using.

### WAN Information:



**IP Address:** This is the WAN port IP address

**IP Subnet Mask:** This is the WAN port IP subnet mask.

**Default Gateway:** This is the IP address of the default gateway

**VPI/VCI:** This is the Virtual Path Identifier and Virtual Channel Identifier that you entered in the first Wizard screen.

#### **LAN Information:**

**MAC Address:** This is the MAC (Media Access Control) or Ethernet address

**IP Address:** This is the LAN port IP address.

**IP Subnet Mask:** This is the LAN port IP subnet mask.

**DHCP Server:** This is the WAN port DHCP role - Server, Relay or None.

**DHCP Start IP:** This is the first of the contiguous addresses in the IP address pool.

**DHCP Pool Size:** This is the number of IP addresses in the IP address pool.

### **4.4.2 System Statistics**

Read-only information includes port status and packet specific statistics. It also provides "system up time" and "poll interval(s)".

**System up Time:** 0:07:46

CPU Load: 5.91%

**WAN Port Statistics:**

Link Status: **Down**

Upstream Speed: 0 kbps

Downstream Speed: 0 kbps

Node-Link	Status	TxPkts	RxPkts	Errors	Tx B/s	Rx B/s	Up Time
1-PPPoE	Idle	0	0	0	0	0	0:00:00

**LAN Port Statistics:**

Status	TxPkts	RxPkts	Collisions:
Up	543	456	0

Poll Interval(s) :

**System up Time:** This is the elapsed time the system has been up.

**CPU Load:** This field specifies the percentage of CPU utilization.

**WAN Port Statistics:** This is the WAN port.

**Link Status:** This is the status of your WAN link.

**Transfer Rate:** This is the transfer rate in kbps.

**Upstream Speed:** This is the upstream speed of the router.

**Downstream Speed:** This is the downstream speed of the router.

**Node-Link:** This field displays the remote node index number and link type. Link types are PPPoA, ENET, RFC 1483 and PPPoE.

**LAN Port Statistics:** This is the LAN port.

**Interface:** This field displays the type of port.

**Status:** For the WAN port, it states the port speed and duplex setting if you're using Ethernet encapsulation, such as down (line is down), idle (line (ppp) idle), dial (starting to trigger a call) and drop (dropping a call). For a LAN port, this

shows the port speed and duplex setting.

**TxPkts:** This field displays the number of packets transmitted on this port.

**RxPkts:** This field displays the number of packets received on this port.

**Errors:** This field displays the number of error packets on this port.

**Tx B/s:** This field displays the number of bytes transmitted in the last second.

**Rx B/s:** This field displays the number of bytes received in the last second.

**Up Time:** This field displays the elapsed time this port has been up.

**Collisions:** This is the number of collisions on this port.

**Poll Interval(s):** Type the time interval for the browser to refresh system statistics.

**Set Interval:** Click this button to apply the new poll interval you entered in the **Poll Interval** field above.

**Stop:** Click this button to halt the refreshing of the system statistics.

### 4.4.3 DHCP Table

DHCP (Dynamic Host Configuration Protocol, RFC 2131 and RFC 2132) allows individual clients to obtain TCP/IP configuration at start-up from a server.

DHCP Table		
Host Name	IP Address	MAC Address

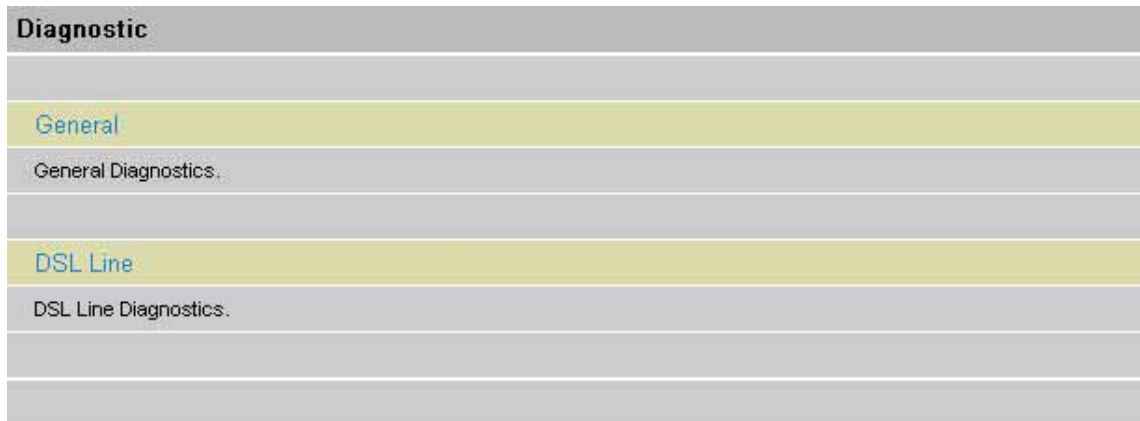
**Host Name:** This is the name of the host computer.

**IP Address:** This field displays the IP address relative to the **Host Name** field

**MAC Address:** This field displays the MAC (Media Access Control) address of the computer with the displayed host name.

### 4.4.4 Diagnostic

These read-only screens display information to help you identify problems with the ADE-3400/4400.



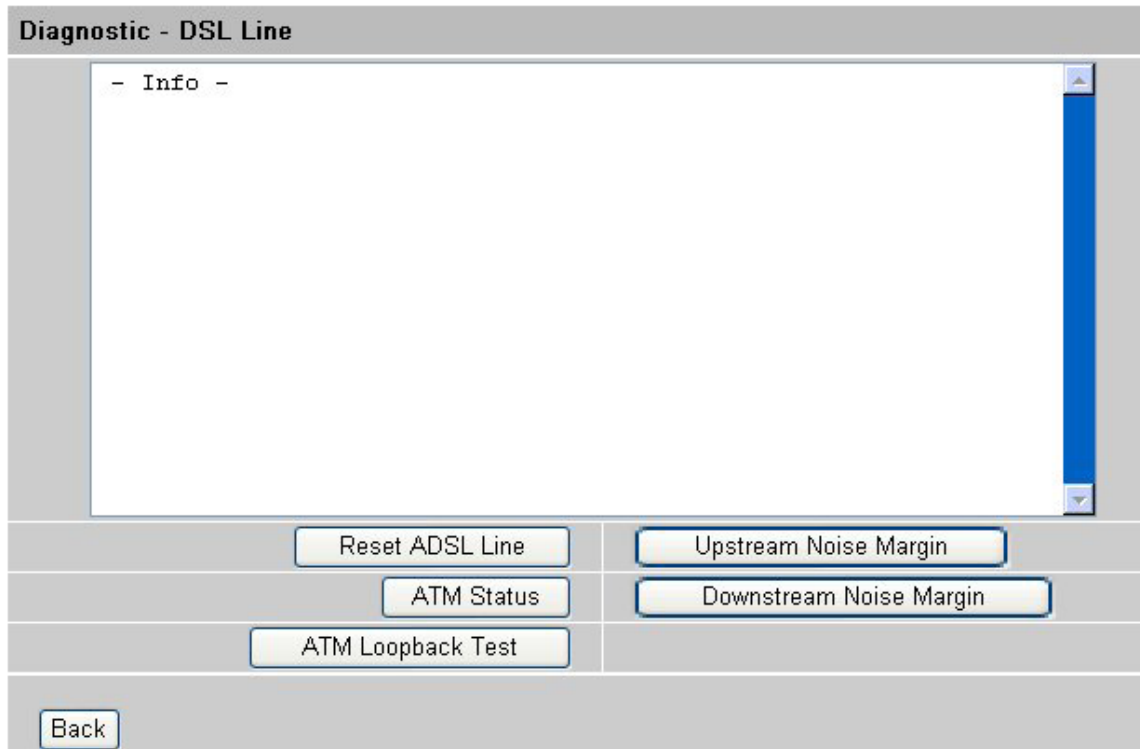
#### 4.4.4.1 Diagnostic-General

**TCP/IP Address:** Type the IP address of a computer that you want to ping in order to test a connection.

**Ping:** Click this button to ping the IP address that you entered.

**Reset System:** Click this button to reboot the ADE-3400/4400. A warning dialog box is displayed and asking you if you're sure you want to reboot the system. Click **OK** to proceed.

#### 4.4.4.2 Diagnostic DSL Line



**Reset ADSL Line:** Click this button to reinitialize the ADSL line. The large text box above then displays the progress and results of this operation

**ATM Status:** Click this button to view ATM status.

**ATM Loopback Test:** Click this button to start the ATM loopback test. Make sure you have configured at least one PVC with proper VPIs/VCIs before you begin this test. The ATM loopback test is useful for troubleshooting problems with the DSLAM and ATM network.

**Upstream Noise Margin:** Click this button to display the upstream noise margin.

**Downstream Noise Margin:** Click this button to display the downstream noise margin.

#### 4.4.5 Firmware

Your router's firmware is the software that allows it to operate and provide all its functionality. Over time this software may be improved and modified, and your router allows you to upgrade the software. It runs to take advantage of these changes. To upgrade the firmware of ADE-3400/4400, you should download or

copy the firmware to your local environment first. Press the “**Browse...**” button to specify the path of the firmware file. Then, click “**Upload**” to start upgrading. When the procedure is completed, ADE-3400/4400 will reset automatically to make the new firmware work.

The screenshot shows a web interface with two main sections. The first section is titled "Firmware" and contains a sub-section "Firmware Upgrade". Below this, there is a text instruction: "To upgrade the internal router firmware, browse to the location of the firmware (.ras) upgrade file and click upload." This is followed by a form with a label "File Path:" on the left, an empty text input field in the middle, a "Browse..." button to the right of the input, and an "Upload" button further to the right. The second section is titled "CONFIGURATION FILE" and contains the instruction: "Click Reset to clear all user-defined configurations and return to the factory defaults." Below this instruction is a "Reset" button.

**File Path:** Type in the location of the file you want to upload in this field or click **Browse ...** to find it.

**Browse...:** Click **Browse...** to find the .ras file you want to upload. Remember that you must decompress compressed (.zip) files before you can upload them.

**Upload:** Click **Upload** to begin the upload process. This process may take up to two minutes.

**Reset:** Click this button to clear all user-entered configuration information and return the ADE-3400/4400 to its factory defaults. Refer to the Resetting the ADE-3400/4400 section. After two minutes, log in again and check your new firmware version in the System Status screen. If the upload was not successful, the following screen will appear. Click Back to go back to the Firmware screen.

*Error Message:*

ERROR: FAIL TO UPDATE DUE TO... The uploaded file was not accepted by the router.

Back



DO NOT power down the router or interrupt the firmware upgrading while it is still in process. Improper operation could damage the router.

**Warning**

#### 4.4.6 Restart

Click **Restart** with option **Current Settings** to reboot your router (and restore your last saved configuration).

RESTART

#### Restart Router

After restarting. Please wait for several seconds to let the system

Restart Router with

Current Settings

Factory Default Settings

Restart

If you wish to restart the router using the factory default settings (for example, after a firmware upgrade or if you have saved an incorrect configuration), select **Factory Default Settings** to reset to factory default settings.

You may also reset your router to factory settings by holding the small Reset pinhole button on the back of your router in for 10-12 seconds whilst the router is turned on.

## 4.5 Logout

To exit the router's web interface, choose **Logout**. Please ensure that you have saved the configuration settings before you logout.

Be aware that the router is restricted to only one PC accessing the configuration web pages at a time. Once a PC has logged into the web interface, other PCs cannot get access until the current PC has logged out of the web interface. If the previous PC forgets to logout, the second PC can access the page after a user-defined period, by default 3 minutes.





## Chapter 5 Troubleshooting

If the ADSL Router is not functioning properly, you can refer first to this chapter for simple troubleshooting before contacting your service provider. This could save your time and effort but if the symptoms persist, then consult your service provider.

### Problems starting up the router

Problem	Corrective Action
None of the LEDs are on when I turn on the router.	Check the connection between the adapter and the router. If the error persists, you may have a hardware problem. In this case you should contact technical support.
I forgot my router login and/or password.	Try the default login and password, please refers to Chapter 3. If this fails, you can restore your router to its factory settings by holding the Reset button on the back of your router for 6 seconds above.

### Problems with the WAN Interface

Problem	Corrective Action
Initialization of the PVC connection ("linesync") failed.	Ensure that the telephone cable is connected properly from the ADSL port to the wall jack. The ADSL LED on the front panel of the router should be on. Check that your VPI, VCI, encapsulation type and type of multiplexing settings are the same as those provided by your ISP. Reboot the router GE. If you still have problems, you may need to verify these settings with your ISP.

<b>Frequent loss of ADSL linesync (disconnections).</b>	<p>Ensure that all other devices connected to the same telephone line as your router (ex. telephones, fax machines, analogue modems) have a line filter connected between them and the wall socket (unless you are using a Central Splitter or Central Filter installed by a qualified and licensed electrician), and ensure that all line filters are correctly installed and the right way around. Missing line filters or line filters installed the wrong way around can cause problems with your ADSL connection, including causing frequent disconnections.</p>
---	---

## Problems with the LAN Interface

Problem	Corrective Action
<b>Cannot ping any PCs on the LAN.</b>	<p>Check the Ethernet LEDs on the top panel. The LED should be on for a port that has a PC connected. If it is off, check the cables between your router and the PC. Make sure you have uninstalled any software firewall for troubleshooting.</p>
	<p>Verify that the IP address and the subnet mask are consistent between the router and the workstations.</p>