







- DSL-520T/DSL-2540T broadband router is easy to used and install. This Setup Guide will provide you the detail instructions on how to setup DSL-520T/DSL-2540T for Streamyx connection.
- The following steps of this documents will guide your through the setup using Setup Utility (Zero Configurations)
- Please understand all prerequisites of the setup before you proceed with the setup.
- Please prepare all necessary information (i.e. Streamyx account information), equipment on hand before beginning the installation

Check Your Package Contents

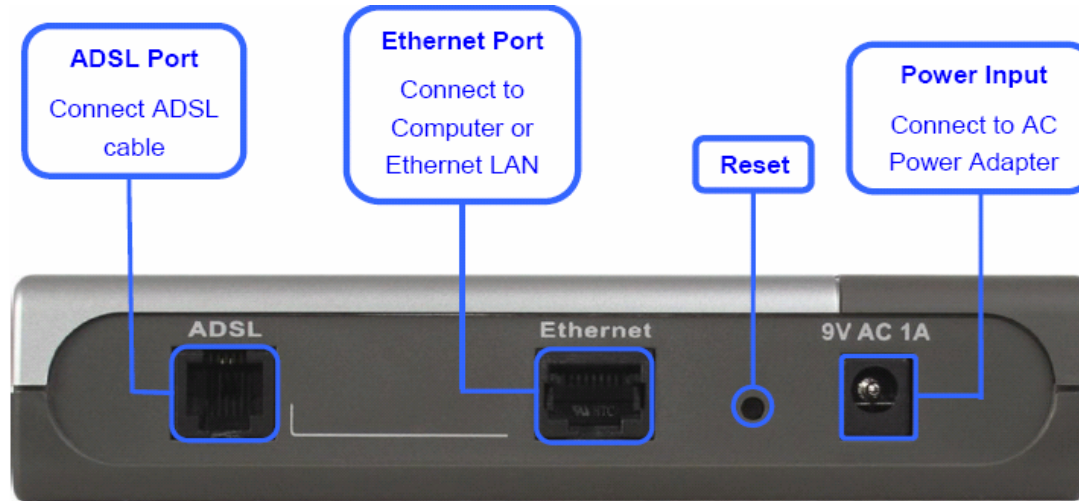
	DSL-520T ADSL Router
	CD-ROM (containing Manual)
	Ethernet (CAT5 UTP) Cable
	Telephone Cable
	Power Adapter

 Using a power supply with a different voltage rating will damage and void the warranty for this product.

Pic 1.

If any of the items above are missing, please contact your reseller.

Rear Panel Display

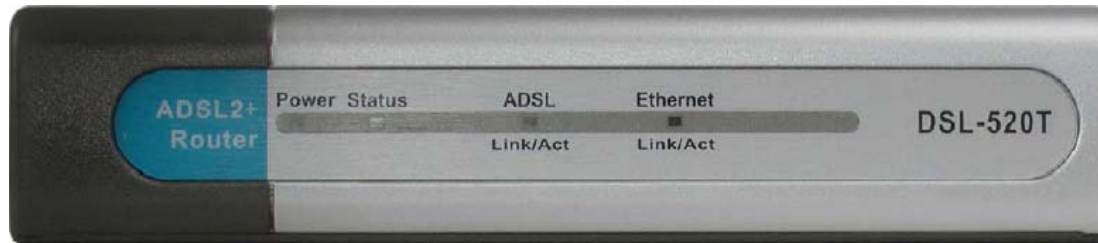


Pic 2.

- Power Input : to Power up DSL-520T/DSL-2540T
- Ethernet Port : to Connects UTP cable (RJ-45) from DSL-520T/DSL-2540T's Ethernet port to your PC.
- ADSL Port : to Connects Telephone cable (RJ-11) from your direct line to DSL-520T/DSL-2540T ADSL port.

* You may reset DSL-520T/DSL-2540T to original setting by pressing the reset button for 10 seconds then release while power on.

Front Panel Display



Pic 3.

- The LED indicators on the front panel includes Power, Status, ADSL and Ethernet.

Power	Steady green light indicates the unit is powered on. When the device is powered off this remains dark.
Status	Lights steady green during power on self-test (POST). Once the connection status has been settled, the light will blink green. If the indicator lights steady green after the POST, the system has failed and the device should be rebooted.
ADSL: Link/Act	Steady green light indicates a valid ADSL connection. This will light after the ADSL negotiation process has been settled. A blinking green light indicates activity on the WAN (ADSL) interface.
Ethernet: Link/Act	A solid green light indicates a valid link on startup. This light will blink when there is activity currently passing through the Ethernet port.

Table 1.



Click "Start"
Button to start
the setup.

D-Link Click'n Connect

D-Link®
Building Networks for People

1. Install Device
2. Internet Setting
3. Internet Connection

>> Power up the device

1. Plug the **power lead** in to the device's **power jack**, and the other end into a **power socket**.

2. Please ensure the **status LED** on the front of the unit is **blinking** before clicking the **NEXT** button.

3.

EXIT <<BACK NEXT >>

D-Link Click'n Connect

D-Link®
Building Networks for People

1. Install Device
2. Internet Setting
3. Internet Connection

>> Connect the device to the computer

4. Connect the Ethernet cable from any one of the **device's LAN ports** (numbered 1 to 4) to your **computer's Ethernet port**.

5. Please ensure the **Link LEDs** (1 to 4) on the front of the unit is lit and correspond to the LAN port at the rear before clicking the **NEXT button**.

6. NEXT >>

D-Link Click'n Connect

D-Link®
Building Networks for People

1. Install Device
2. Internet Setting
3. Internet Connection

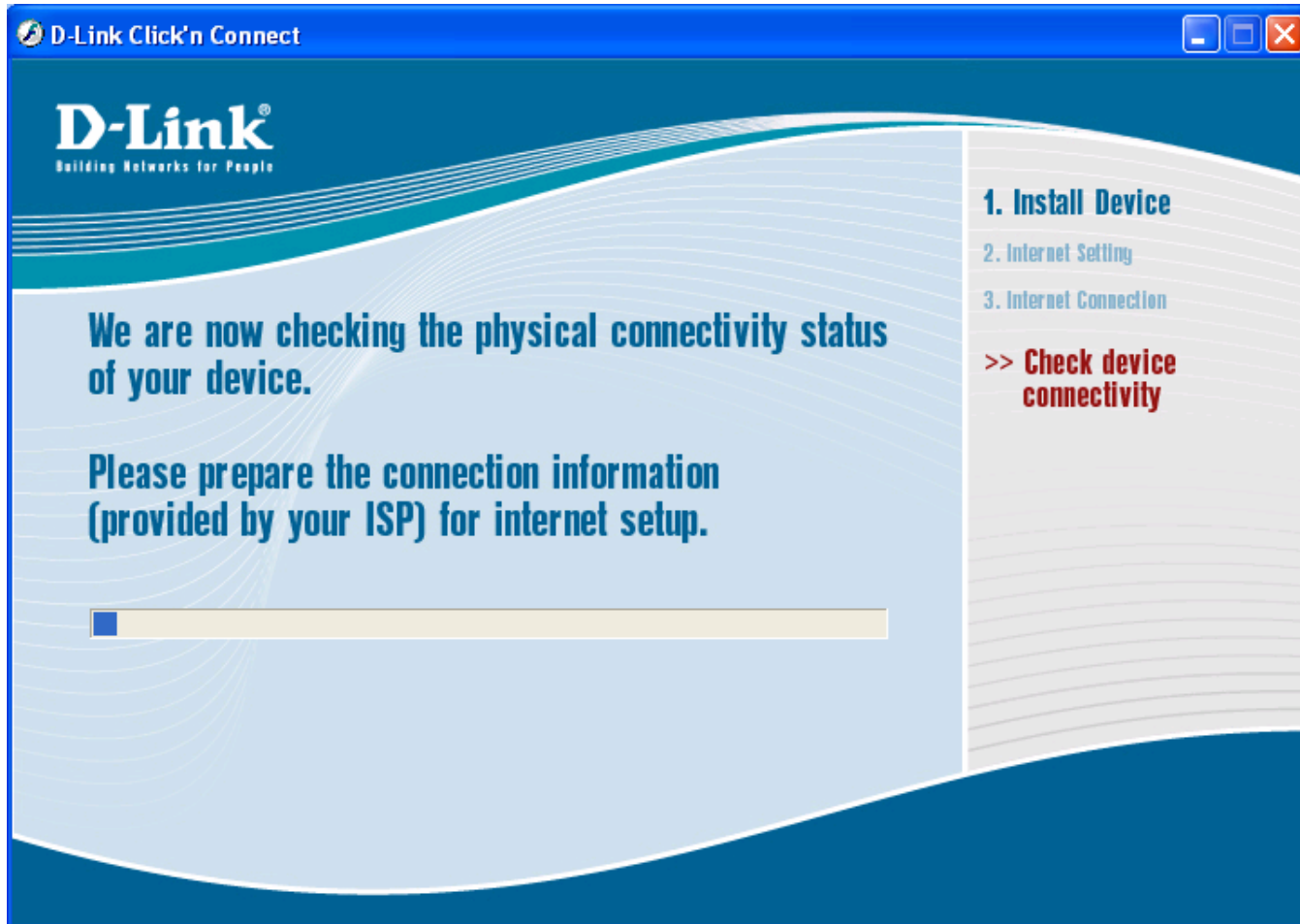
>> **Connect the device to the internet**

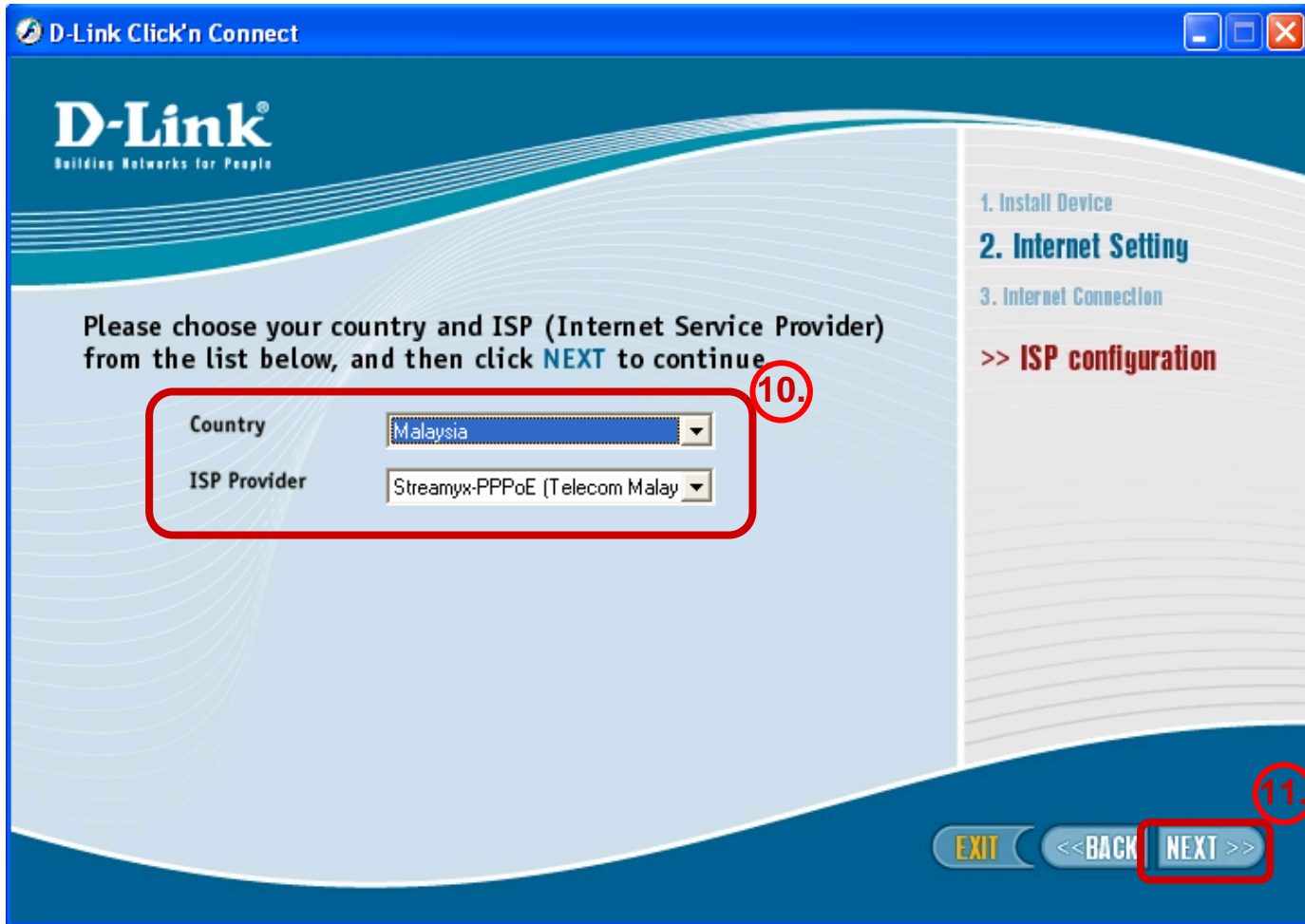
7. Connect the microfilter/splitter (optional on some models) to the **telephone jack**. Connect the device's Line port to the microfilter/splitter **DSL jack**.

8. Please make sure the **ADSL LED** is **lit** before clicking the **NEXT** button.

9.

EXIT <<BACK NEXT >>





D-Link Click'n Connect

D-Link®
Building Networks for People

Please enter your account information (provided by your ISP) below, and then click **NEXT** to continue.

Username
Provided by your ISP

username@streamyx

Password
Provided by your ISP

xxxxxxxx

Confirm Password

xxxxxxxx

***Note :** for Streamyx user, please remember to have **@streamyx** at the back of your username

1. Install Device
2. **Internet Setting**
3. Internet Connection

>> **Set your ISP**

EXIT <<BACK **NEXT** >>

The screenshot shows a window titled "D-Link Click'n Connect" with standard Windows window controls. The D-Link logo and tagline "Building Networks for People" are in the top left. The main area contains the text "We are now saving the settings and checking your internet connection status, please wait ..." above a progress bar that is 25% full. Below the progress bar is a diagram showing a satellite dish, a DSL modem, and a computer connected in a line. On the right side, a checklist shows three steps: "1. Install Device", "2. Internet Setting", and "3. Internet Connection", with the third step highlighted in bold. Below the third step, a red arrow points to the text "Check your internet connection status".

D-Link Click'n Connect

D-Link®
Building Networks for People

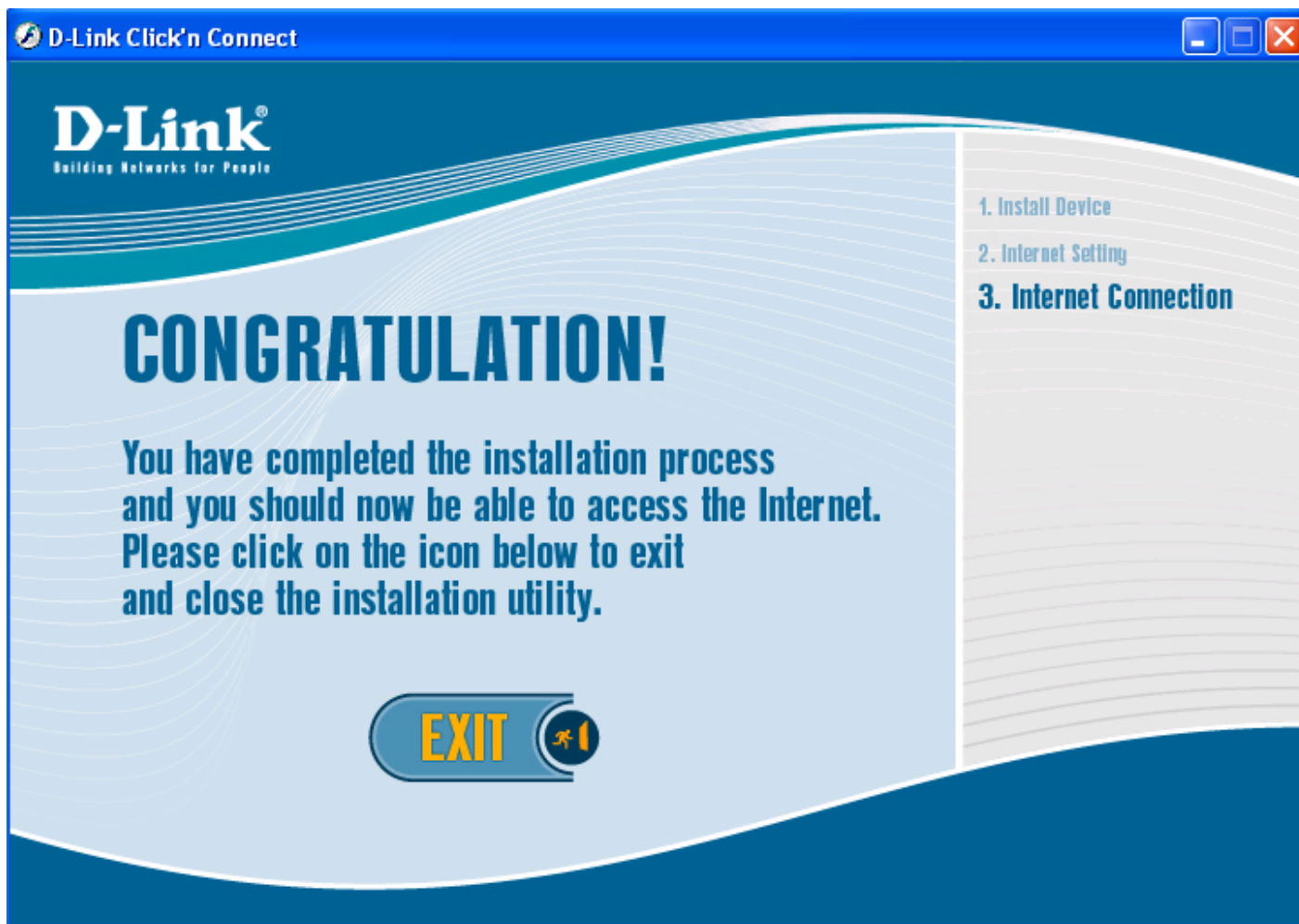
We are now saving the settings and checking your internet connection status, please wait ...

[25%]

1. Install Device
2. Internet Setting
3. Internet Connection

>> **Check your internet connection status**

Diagram illustrating the connection setup: Satellite Dish -> DSL Modem -> Computer



Technical Support

You can find this user documentation on D-Link Web-Site
www.dlink-intl.com

Or contact Toll-Free Technical Hotline
1800-88-2880

Phone: (+603) 6201 2881 Fax: (+603) 6201 4882
Address: D-03A-09, Block D, Plaza Mont' Kiara,
No 2 Jalan Kiara, Mon't Kiara 50480 Kuala Lumpur Malaysia
<http://www.dlink.com.my>

