



DSL-510
ADSL Router
User's Guide

(First Edition May 2003)

FCC Warning

This equipment has been tested and found to comply with the limits for a Class B digital device, pursuant to part 15 of the FCC Rules. These limits are designed to provide reasonable protection against harmful interference in a residential installation. This equipment generates, uses and can radiate radio frequency energy and, if not installed and used in accordance with the instructions, may cause harmful interference to radio communications. However, there is no guarantee that interference will not occur in a particular installation. If this equipment does cause harmful interference to radio or television reception, which can be determined by turning the equipment off and on, the user is encouraged to try to correct the interference by one or more of the following measures:

- Reorient or relocate the receiving antenna.
- Increase the separation between the equipment and receiver.
- Connect the equipment into an outlet on a circuit different from that to which the receiver is connected.
- Consult the dealer or an experienced radio/ TV technician for help.

CE Mark Warning

This is a Class B product. In a domestic environment, this product may cause radio interference, in which case the user may be required to take adequate measures.

Warnung!

Dies ist in Produkt der Klasse B. Im Wohnbereich kann dieses Produkt Funkstoerungen verursachen. In diesem Fall kann vom Benutzer verlangt werden, angemessene Massnahmen zu ergreifen.

Advertencia de Marca de la CE

Este es un producto de Clase B. En un entorno doméstico, puede causar interferencias de radio, en cuyo case, puede requerirse al usuario para que adopte las medidas adecuadas.

Attention!

Ceci est un produit de classe B. Dans un environnement domestique, ce produit pourrait causer des interférences radio, auquel cas l'utilisateur devrait prendre les mesures adéquates.

Attenzione!

Il presente prodotto appartiene alla classe B. Se utilizzato in ambiente domestico il prodotto può causare interferenze radio, nel cui caso è possibile che l'utente debba assumere provvedimenti adeguati.

TABLE OF CONTENTS

About This User's Guide	V
Guide Overview	v
Before You Start	VI
Installation Overview	vi
Requirements	vi
Low Pass Filters	vi
Operating System	vi
Web Browser	vi
Ethernet Port (NIC Adapter)	vii
Router vs. Bridge Mode	vii
Additional Software	vii
Account Information (User Name and Password)	vii
Additional PVC Settings	vii
Unpacking	viii
Chapter 1 - Introduction	1
What is ADSL?	1
Router Description and Operation	1
Product Features	1
Front Panel	2
Rear Panel	2
Chapter 2 – Hardware Installation	3
Connect the ADSL Line.....	3
Computer to Router Connection	3
Computer Ethernet LAN to Router	3
Hub or Switch to Router Connection	4
Power On Router	4
Chapter 3 – First Time Set Up	5
First Time	5
Wan Configuration Summary	5
Configuring IP Settings on Your Computer	5
Windows XP for DHCP	6

Windows 2000 for DHCP	9
Windows ME for DHCP	12
Windows 98SE for DHCP	15
Access the Web Configuration	18
Using the Configuration Wizard	19
Using Wizard After Configuration IP Setting Your Computer	24
Windows XP IP Setting for Bridge Mode	24
Windows 2000 IP Setting for Bridge Mode	27
Windows ME IP Setting for Bridge Mode	30
Windows 98SE IP Setting for Bridge Mode	35
Chapter 4 – Web-based Configuration	40
Home	40
Wizard	40
WAN	41
LAN	46
DHCP	47
DNS	48
Advanced	49
Virtual Server	49
Filters	50
Schedule	52
Routing	53
DMZ	54
Firewall	55
RIP	56
PPP	58
ADSL	59
SNMP	60
Tools	61
Admin	61
Time	61
System	62
Firmware	62
Misc.	65
Diagnostic	66
Status	67
Device Info	67

Log	67
Traffic	68
ATM	69
TCP	70
ADSL	71
Appendix A - Technical Specifications	72
Appendix B – Microfilters and Splitters	73
In-Line Filters	73
Line Splitter	74

About This User's Guide

This user's guide provides instructions on how to install the DSL-510 ADSL Router and use it to connect a computer or Ethernet LAN to the Internet.

If you are using a computer with a functioning Ethernet port, you can use the Quick Installation Guide to quickly establish your ADSL connection and access the Internet.

ADSL services are provided by, and sold by a variety of businesses. Your ADSL service provider may be your telephone company, an Internet service provider (ISP), a business that specializes in providing network services or a combination of any of these. This guide uses the generic terms *DSL service provider* and *network service provider*, to refer to any business or agent that provides DSL service.

Guide Overview

Chapter 1 – *Introduction* describes the Router and its key features. Provides an introduction to ADSL. Lists standards to which the Router complies. Contains a packing list.

Chapter 2 – *Hardware Installation* discusses how to connect the Router to an Ethernet LAN.

Chapter 3 – *First Time Set Up* provides information on how to configure the Router and establish the ADSL connection using the Web-based manager.

Chapter 4 – *Web based Configuration* describes how to use the web-based manager to change to change Router settings and configure additional virtual connections (PVCs).

Appendix A - *Technical Specifications* is a list the technical specifications of the Router, including standards compliance.

Appendix B – *Microfilters and Splitters* describes the contains illustrated examples of how to use low pass filters.

Before You Start

Please read and make sure you understand all the prerequisites for proper installation of your new Router. Have all the necessary information and equipment on hand before beginning the installation.

Installation Overview

The procedure to install the Router can be described in general terms in the following steps:

1. Gather information and equipment needed to install the device. Before you begin the actual installation make sure you have all the necessary information and equipment.
2. Install the hardware, that is, connect the cables (Ethernet and telephone) to the device and connect the power adapter.
3. Check the IP settings on your computer and change them if necessary so the computer can access the web-based software built into the Router.
4. Use the web-based management software to configure the device to suit the requirements of your ADSL account.

Requirements

To install and use the Router you need a computer equipped with an Ethernet port (such as an Ethernet NIC) and a web browser. You may also need to use information given to you by your ISP or ADSL service provider. This information is stored in the Router memory and used to establish the ADSL connection and confirm your identity. Read the next page for more details about these requirements.

Low Pass Filters

Since ADSL and telephone services share the same copper wiring to carry their respective signals, a filtering mechanism may be necessary to avoid mutual interference. A low pass filter device can be installed for each telephone that shares the line with the ADSL line. These filters are easy to install passive devices that connect to the ADSL device and/or telephone using standard telephone cable. Ask your service provider for more information about the use of low pass filters with your installation. Appendix B provides illustrated examples of how to install two common styles of low pass filters.

Operating System

The DSL-510 uses an HTML-based web interface for setup and management. The web configuration manager may be accessed using any operating system capable of running web browser software.

Web Browser

Any common web browser can be used to configure the Router using the web configuration management software. The program is designed to work best with more recently released browsers such as Microsoft Internet Explorer® version 5.0, Netscape Navigator® version 4.7, or later versions. The web browser must have JavaScript enabled. JavaScript is enabled by default on many browsers. Make sure JavaScript has not been disabled by other software (such as virus protection or web user security packages) that may be running on your computer.

Ethernet Port (NIC Adapter)

Any computer that uses the Router must be able to connect to it through the Ethernet port on the Router. This connection is an Ethernet connection and therefore requires that your computer be equipped with an Ethernet port as well. Most notebook computers are now sold with an Ethernet port already installed. Likewise, most fully assembled desktop computers come with an Ethernet NIC adapter as standard equipment. If your computer does not have an Ethernet port, you must install an Ethernet NIC adapter before you can use the Router. If you must install an adapter, follow the installation instructions that come with the Ethernet NIC adapter.

Router vs. Bridge Mode

The DSL-510 can be used in four different mode or roles, a router mode or bridge mode. In bridge mode the device is intended to connect a single computer to the Internet or WAN (Wide Area Network) interface. In bridge mode the device is said to be invisible since it does not have an IP address. The IP address is actually configure on the computer connected to the Ethernet LAN interface. If you are using the device in bridge mode it is recommended that you run firewall software on the computer connected to it.

Additional Software

It may be necessary to install software on your computer that enables the computer to access the Internet (through computers operated by your ISP or service provider). Additional software must be installed if you are using what is called a PPP (Point to Point Protocol) connection. For a PPP connection, the information needed to make and maintain the Internet connection is stored on your computer, not in the Router. This type of connection is similar to the arrangement used for analog dial-up Routers, but the connection speed is much faster.

If your ADSL service is delivered through a "bridged" connection, the information needed to establish and maintain the Internet connection is stored in the Router. In this case, it is not necessary to install software on your computer.

Account Information (User Name and Password)

Most users will need to supply a user name and password used to access the service provider's network (and ultimately, the Internet). This information is stored either in the Router's memory or on your computer depending on the type of ADSL connection you have.

ACCOUNT INFORMATION (PPP Connections Only)
User Name:
Password:

Additional PVC Settings

If you are using multiple virtual connections it will be necessary to provide additional VPI and VCI values for the device. These numbers define a unique route used on the ATM backbone of the WAN.

Unpacking

Open the shipping carton and carefully remove all items. In addition to this User's Guide, ascertain that you have:

1. One DSL-510 ADSL Router
2. One CD-ROM with this User's Guide and the Quick Installation Guide
3. One twisted-pair telephone cable used for ADSL connection
4. One CAT-5 Ethernet cable.
5. One AC power adapter suitable for your electric service.
6. One Quick Installation Guide hardcopy.

Chapter 1 - Introduction

ADSL modem technology is a relatively new technology and may be unfamiliar to the reader. In this section, we introduce you to ADSL technology and give a brief description of its key attributes. We also give a general description of the D-Link DSL-510 ADSL Router and its main features.

What is ADSL?

Asymmetric Digital Subscriber Line (ADSL) is an access technology that utilizes ordinary copper telephone lines to enable high-speed digital data transmission and interactive multimedia applications for business and residential customers. Using existing phone lines avoids the need for adding expensive new cable.

ADSL Routers use digital coding techniques that greatly increase the bandwidth capacity of telephone lines without interfering with regular telephone services. For the ADSL Router user, this means much faster data communications. ADSL Routers make it possible to enjoy benefits such as high-speed Internet access, telecommuting, collaborative computing, distance learning, movies on demand and multi-player video gaming without experiencing any loss of quality or disruption of voice/fax telephone capabilities.

ADSL provides a dedicated service over a single telephone line operating at speeds of up to 8 Mbps downstream (to the user) and up to 640 Kbps upstream, depending on the type of service and local telephone line conditions. These conditions are ideal for many user applications. A secure point-to-point connection is established between the user and the central office of the local telephone company. The user is always connected, thus eliminating dial-up time and simplifying connectivity issues.

D-Link ADSL devices incorporate the recommendations of the ADSL Forum (www.adsl.com) regarding framing, data format, and upper layer protocols.

Router Description and Operation

The DSL-510 ADSL Router is designed to provide a simple, cost-effective and secure ADSL Internet connection for your small to medium-sized private network. The ADSL connection technology enables many interactive multi-media applications such as video conferencing and collaborative computing.

The Router is easy to install and use. The DSL-510 connects to an Ethernet LAN or single computer via a standard Ethernet interface. The ADSL connection is made using ordinary twisted-pair telephone line with standard RJ-11 connectors.

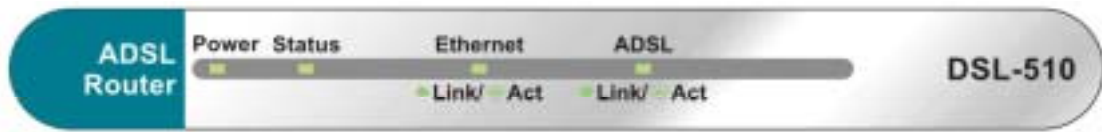
Product Features

The D-Link DSL-510 ADSL Router provides the following features:

- Data rates up to 8 Mbps for downstream and 1M bps for upstream
- Friendly web-based graphical user interface for configuration and management
- Supports up to eight simultaneous virtual connections for a single ADSL account
- Supports T1.413 issue 2, G.dmt and G.lite standards
- Auto-handshake and rate adaptation for different ADSL flavors
- Widest range of DSLAM interoperability
- Bridge IP over ATM LLC SNAP (RFC 1483)
- Built-in MIBs for SNMP management
- Upgradeable firmware through HTTP

Front Panel

Place the Router in a location where the LED indicators can be easily viewed.

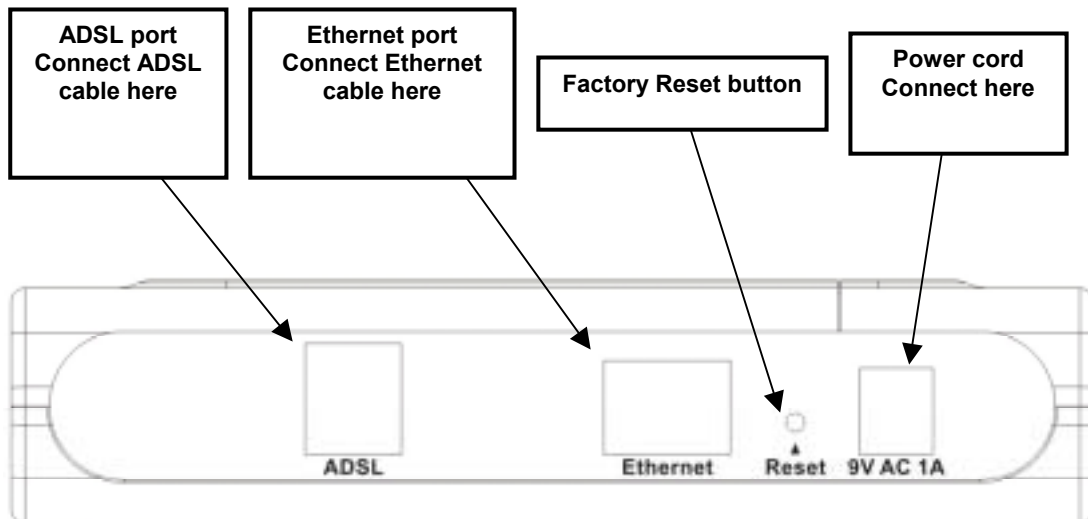


The LED Indicators read as follows:

Power Steady green light indicates the unit is powered on.
Status Blinking green indicates normal operation.
Ethernet: Link/ Act Steady green light indicates a valid Ethernet connection. Blinking green indicates an active Ethernet session.
ADSL: Link/Act Steady green light indicates a valid ADSL connection. This will light after the ADSL negotiation process has been settled. Blinking green light indicates an active WAN session.

Rear Panel

All cable connections to the Router are made at the rear panel. The factory-reset button is located here as well.



Chapter 2 - Hardware Installation

In this chapter you will learn about the various connections you will need to make in order to use the Router.

When selecting the location for the Router, allow ample room to access the connections on the rear panel. For convenience, try to place the Router near your computer so you can monitor the LED indicators. Allow some space above the Router for ventilation to avoid problems with overheating.

Connect the ADSL Line

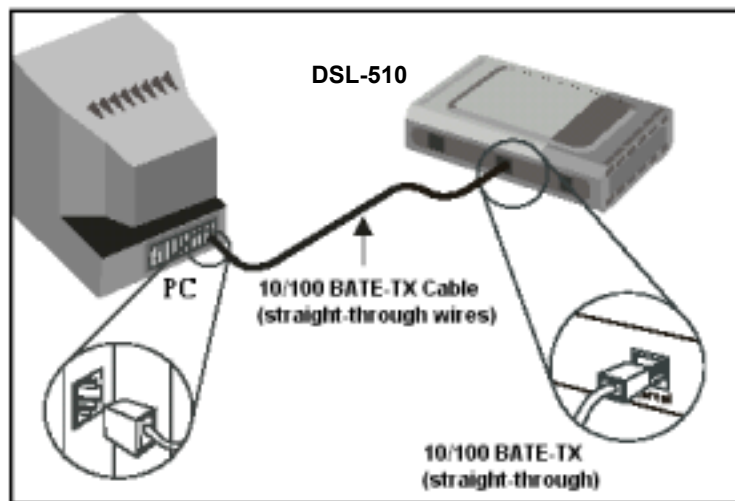
Use the twisted-pair ADSL cable (standard telephone cable) included with the Router to connect it to your telephone line. Simply plug one end of the cable into the ADSL port (RJ-11 receptacle) on the rear panel of the Router and insert the other end into the wall jack.

Computer to Router Connection

You can begin connection the Router by performing the following steps:

1. Insert one end of the ADSL cable (26 AWG twisted-pair telephone cable) into the telephone wall jack (RJ-11 port).
2. Insert the other end of the ADSL cable into the ADSL port (RJ-11 port) on the Router.
3. Insert one end of an Ethernet cable to the LAN port on the back panel of the Router.
4. Insert the other end of the Ethernet cable to the PC using Ethernet cable.

You can connect the Router directly to a 10/100BASE-TX Ethernet adapter card (NIC) installed on a PC using the Ethernet cable provided as shown in this diagram.



Connect Ethernet LAN to Router

The Router may be connected to any 10/100BASE-TX Ethernet LAN. Any connection to an Ethernet concentrating device such as a switch or hub must operate at a speed of 10/100 Mbps only. When connecting the Router to any Ethernet device that is capable of operating at speeds higher than 10Mbps, be sure that the device has auto-negotiation (NWay) enabled for the connecting port.

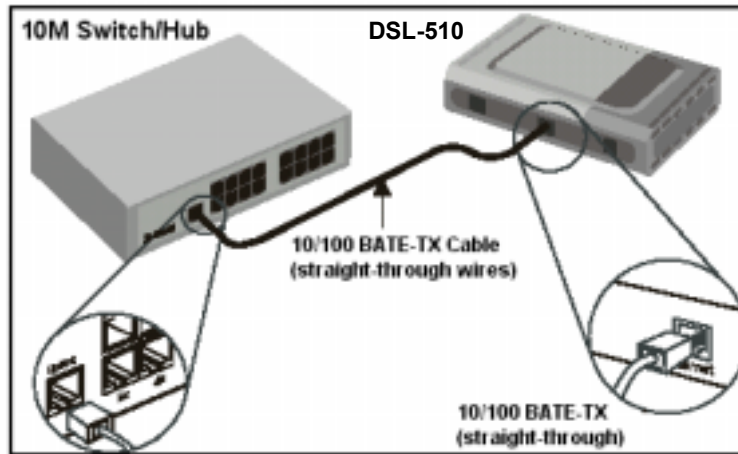
Use standard twisted-pair cable with RJ-45 connectors. The RJ-45 port on the Router is a crossed port (MDI-X). Follow standard Ethernet guidelines when deciding what type of cable to use to make this connection. When connecting the Router directly to a PC or server use a normal straight-through cable. You should use a crossed cable when connecting the Router to a normal (MDI-X) port on a switch or hub. Use a normal straight-through cable when connecting it to an uplink (MDI-II) port on a hub or switch. The Ethernet Link LED indicator will indicate a valid connection.

The rules governing Ethernet cable lengths apply to the LAN to Router connection. Be sure that the cable connecting the LAN to the Router does not exceed 100 meters.

Hub or Switch to Router Connection

Connect the Router to an uplink port (MDI-II) on an Ethernet hub or switch with a straight-through cable as shown in the diagram below:

If you wish to reserve the uplink port on the switch or hub for another device, connect to any on the other MDI-X ports (1x, 2x, etc.) with a cross-wired cable or use crossover adapter.



Power On Router

To power on the device:

1. Insert the AC Power Adapter cord into the power receptacle located on the back of the Router and plug the adapter into a nearby power source.
2. You should see the Power LED indicator light up and remain lit.

Chapter 3 - Configuring the Router for the First Time

The first time you setup the Router it is recommended that you configure the WAN connection using a single computer making sure that both the computer and the Router are not connected to the LAN. Once the WAN connection is functioning properly you may continue change settings to suit your network. This chapter is only concerned with settings up the WAN connection. The following chapter, Web-based Management Guide, describes the various menus used to configure and monitor the Router including how to change IP settings and DHCP server setup.

Wan Configuration Summary

- 1. Connect to the Router-** To configure the WAN connection used by the Router it is first necessary to communicate with the Router through its management interface, which is HTML-based and can be accessed using a web browser. To access the management software your computer must be able to “see” the Router. Your computer can see the Router if it is in the same “neighborhood” or subnet as the Router. This is accomplished by making sure your computer has IP settings that place it in the same subnet as the Router. The easiest way to make sure your computer has the correct IP settings is to configure it to use the DHCP server in the Router. The next section describes how to change the IP configuration for a computer running a Windows operating system to be a DHCP client.
- 2. Configure the WAN Connection-** Once your are able to access the configuration software you can proceed to change the settings required to establish the ADSL connection and connect to the service provider's network. There are different methods used to establish the connection to the service provider's network and ultimately to the Internet. You should know what Encapsulation and connection type you are required to use for your ADSL service. It is also possible that you must change the PVC settings used for the ADSL connection. Your service provider should provide all the information you need to configure the WAN connection.

Configuring IP Settings on Your Computer

In order to configure your system to receive IP settings from the Router it must first have the TCP/IP protocol installed. If you have an Ethernet port on your computer, it probably already has TCP/IP protocol installed. If you are using Windows XP the TCP/IP is enabled by default for standard installations. Below is an illustrated example of how to configure a Windows XP system to automatically obtain IP settings from the Router. Following this example is a step-by-step description of the procedures used on the other Windows operating systems to first check if the TCP/IP protocol has been installed, if it is not instruction are provided for installing it. Once the protocol has been installed you can configure the system to receive IP settings from the Router.

For computers running non-Windows operating systems, follow the instructions for your OS that configure the system to receive an IP address from the Router, that is, configure the system to be a DHCP client.

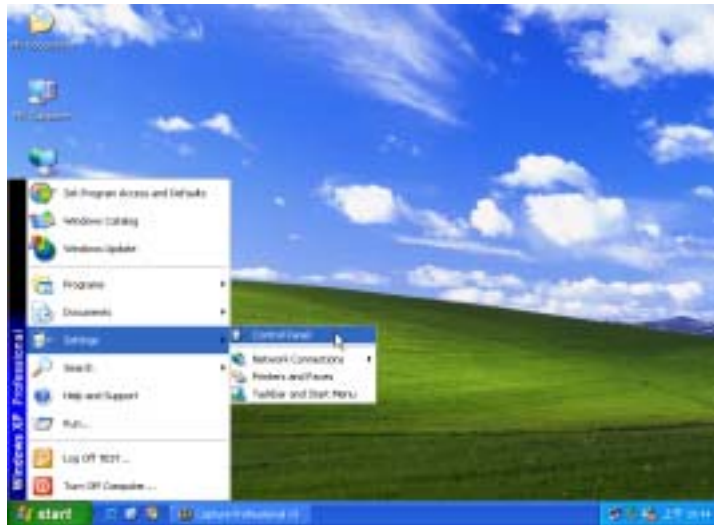


Note

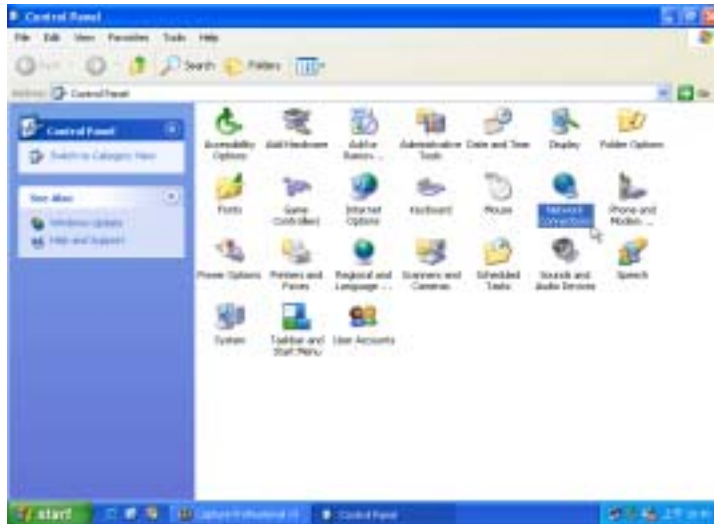
If you are using this Router to provide Internet access for more than one computer, you can use these instructions later to change the IP settings for the other computers. However you cannot use the same IP address since every computer must have its own IP address that is unique on the local network.

Windows XP for DHCP

1. In the Windows task bar, click the **Start** button, point to **Settings**, and then click **Control Panel**.



2. Double-click the **Network Connections** icon.



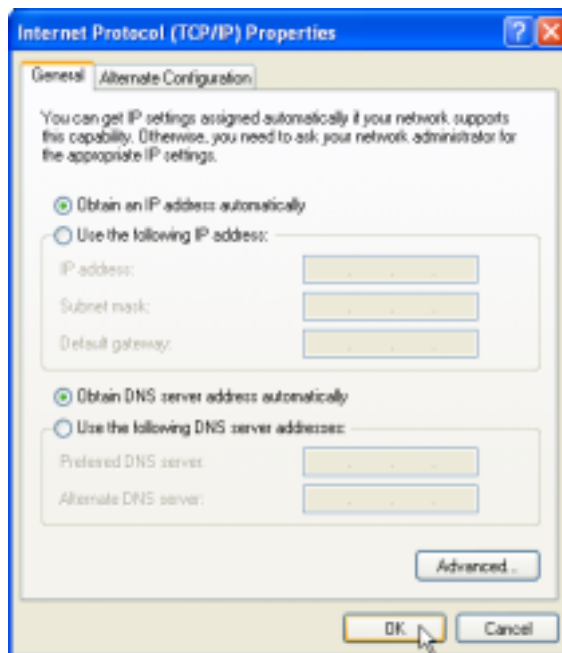
3. In the LAN or High-Speed Internet window, right-click on icon corresponding to your network interface card (NIC) and select **Properties**. (This icon may be labeled *Local Area Connection*)



4. In the **General** tab of the **Local Area Connection Properties** menu. Highlight **Internet Protocol (TCP/IP)** under “This connection uses the following items.” by click on it once. Click on the **Properties** button.



5. Select “**Obtain an IP address automatically**” by clicking once in the circle. Click **OK** to confirm and save your changes, and then close the Control Panel.



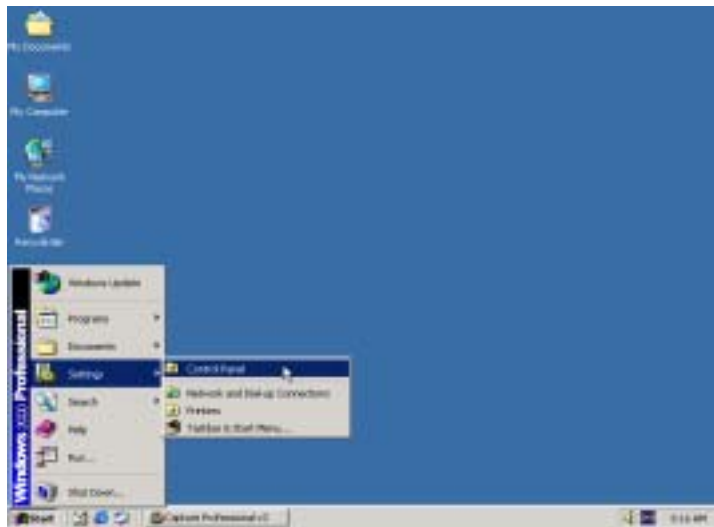
6. The **Local Area Connection Properties** window appears. Click **OK** button.



Your computer is now ready to use the ADSL Router DHCP server.

Windows 2000 for DHCP

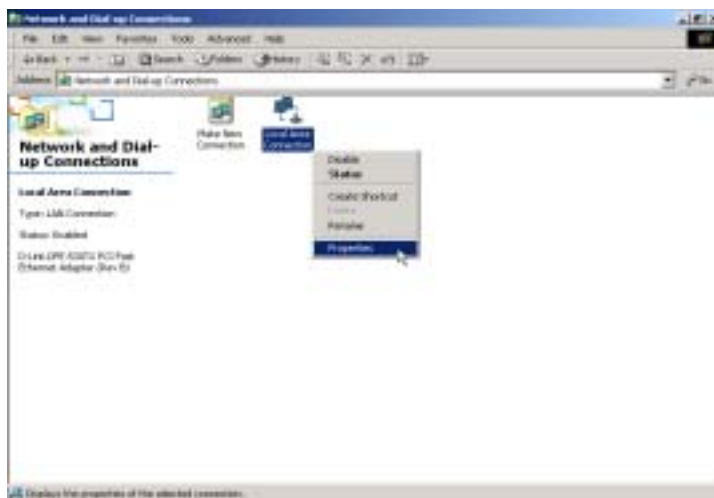
1. In the Windows task bar, click the **Start** button, point to **Settings**, and then click **Control Panel**.



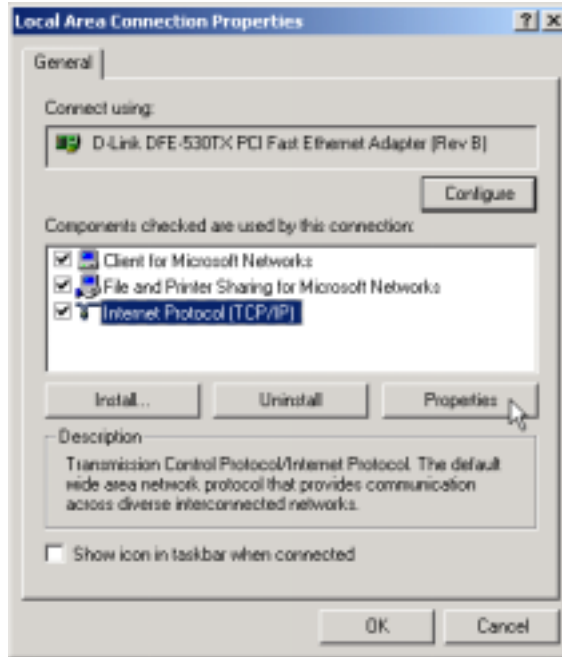
2. Double-click the **Network and Dial-up Connections** icon.



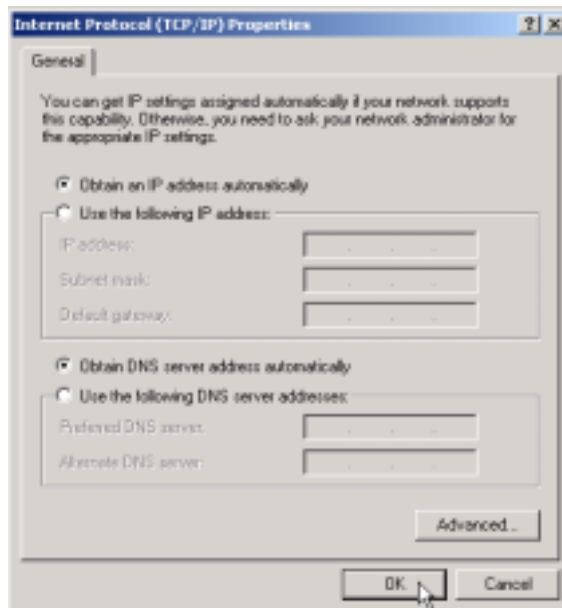
3. In the Network and Dial-up Connections window, right-click the **Local Area Connection** icon, and then select **Properties**.



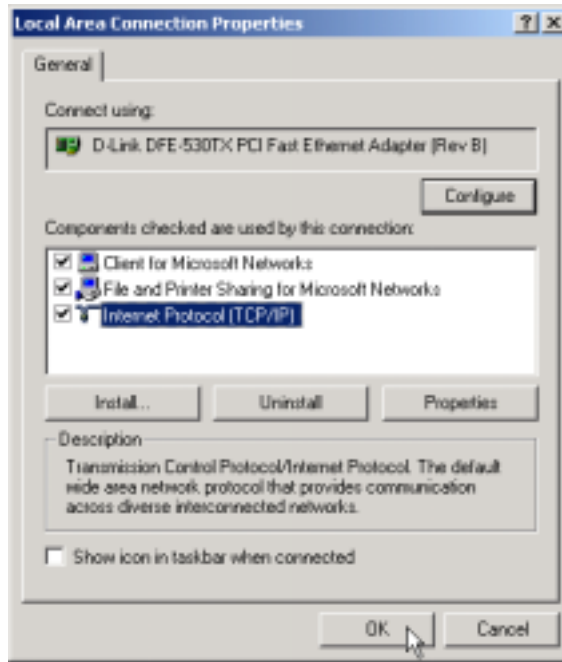
4. In the Local Area Connection Properties dialog box, select **Internet Protocol (TCP/IP)**, and then click **Properties**.



5. Select "**Obtain an IP address automatically**" by clicking once in the circle. Click **OK** to confirm and save your changes, and then close the Control Panel.



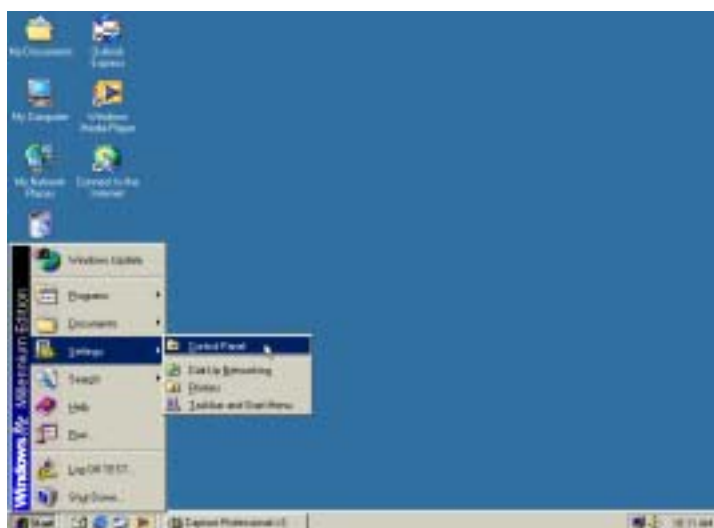
6. The **General** tab will again appear. Click **OK** button.



Your computer is now ready to use the ADSL Router DHCP server.

Windows ME for DHCP

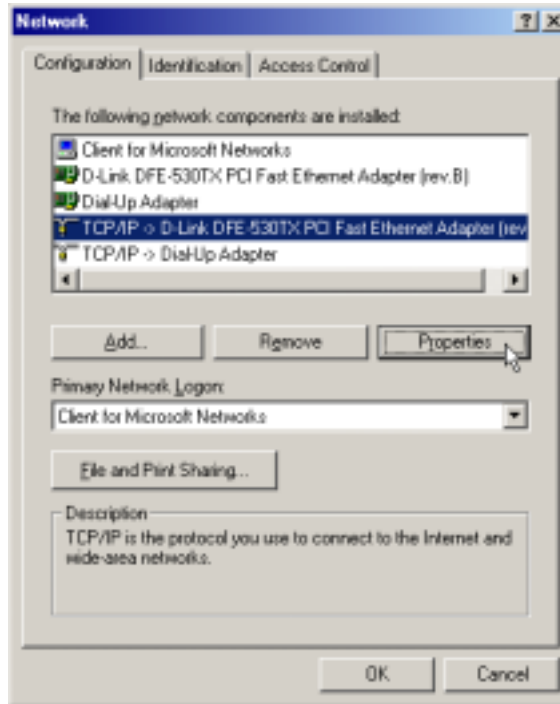
1. In the Windows task bar, click the **Start** button, point to **Settings**, and then click **Control Panel**.



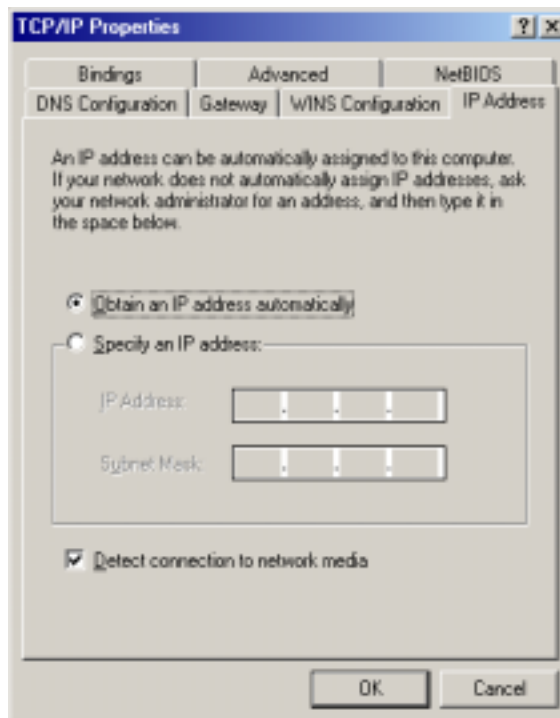
2. Double-click the **Network** icon.



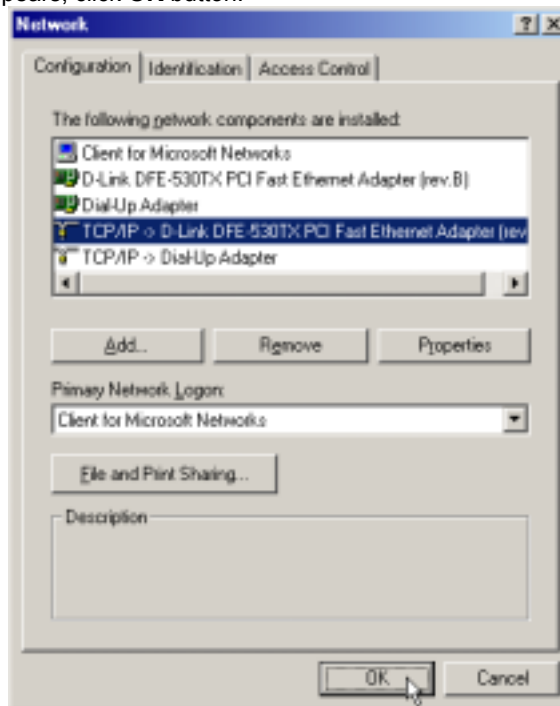
3. In the Network windows appears. Select the **Configuration** tab, select **TCP/IP** protocol line that has been associated with your network card/adapter. and then click **Properties**.



4. In the TCP/IP Properties windows appear, then choose the **IP Address** tab, click the **Obtain and IP automatically** option. Click **OK** to confirm and save your changes, and then close the Control Panel.



5. The **Network** window again appears, click **OK** button.



Your computer is now ready to use the ADSL Router DHCP server.

Windows 98SE for DHCP

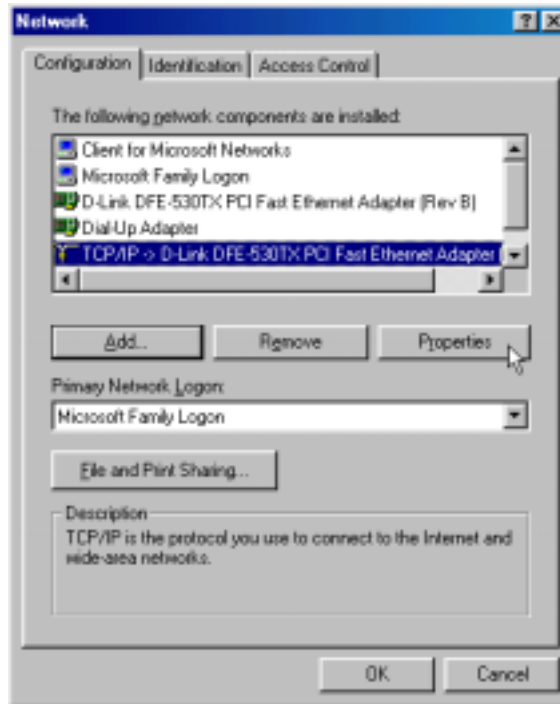
1. In the Windows task bar, click the **Start** button, point to **Settings**, and then click **Control Panel**.



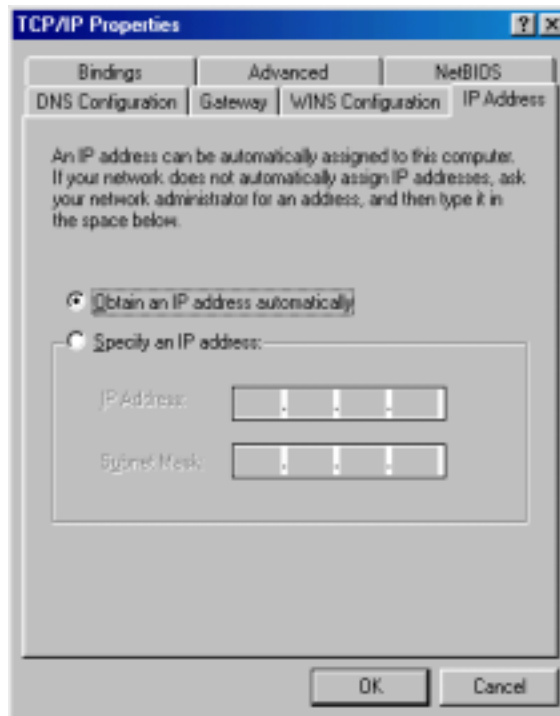
2. Double-click the **Network** icon.



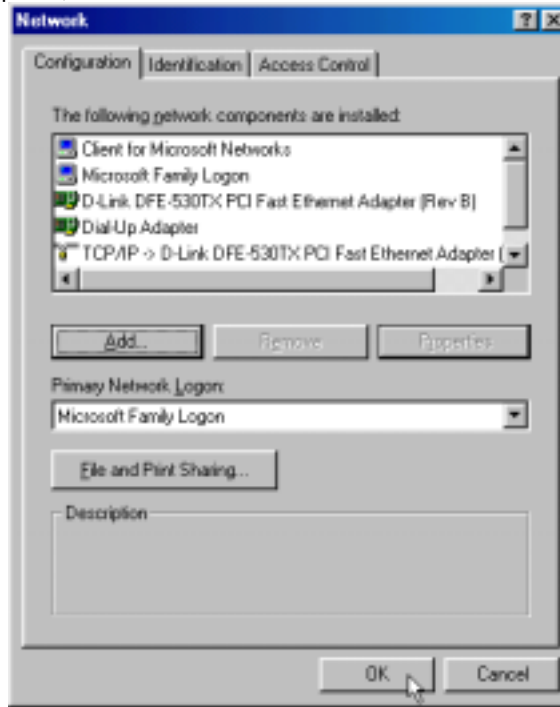
3. In the Network windows appears. Select the **Configuration** tab, select **TCP/IP** protocol line that has been associated with your network card/adaptor and then click **Properties**.



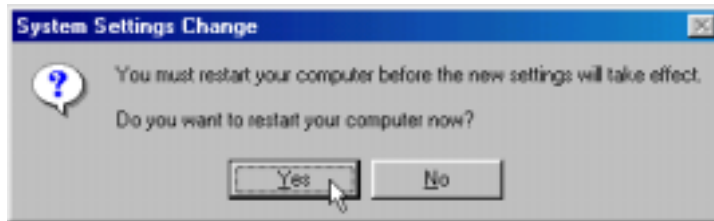
4. In the TCP/IP Properties windows appear, then choose the **IP Address** tab, click the **Obtain and IP automatically** option. Click **OK** to confirm and save your changes.



5. The **Network** window again appears, click **OK** button.



6. The **System Settings Change** window appears. You need to restart your computer for the changes to go into effect. Click **Yes**.

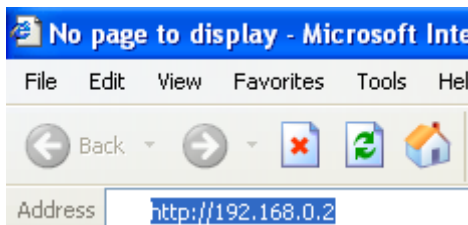


Access the Web Configuration Manager

Once the computer has IP settings that allow it to access the web-based configuration software, you can change the settings to enable the Router to connect to the Internet.

If the browser software on the computer you are using is configured to use a proxy server for Internet access, it is necessary to first disable the proxy connection.

To use the web-based management software, launch your web browser software and use the LAN IP address of the Router to access the management software. The default LAN IP address of the Router is used in the Address bar of your web browser window. Type in **http://** followed by the default IP address, **192.168.0.2** in the address bar of the browser. The URL in the address bar should read: **http://192.168.0.2**



A new window appears prompting you for a user name and password needed to gain access the web configuration manager.

Use the default user name: **admin** and password: **510admin** for first time set up. You can change the password once you have established the ADSL connection. The user name and password allows any computer on the same subnet as the Router to access the web configuration manager. This password can also be used to Telnet to the device through the Ethernet or the Internet interfaces. To change this password, see the next chapter.



Note

Do not confuse the user name and password used to access the web-based manager with the ADSL account user name and password needed for PPP connections to access the ADSL or network service provider's network.

Using the Configuration Wizard

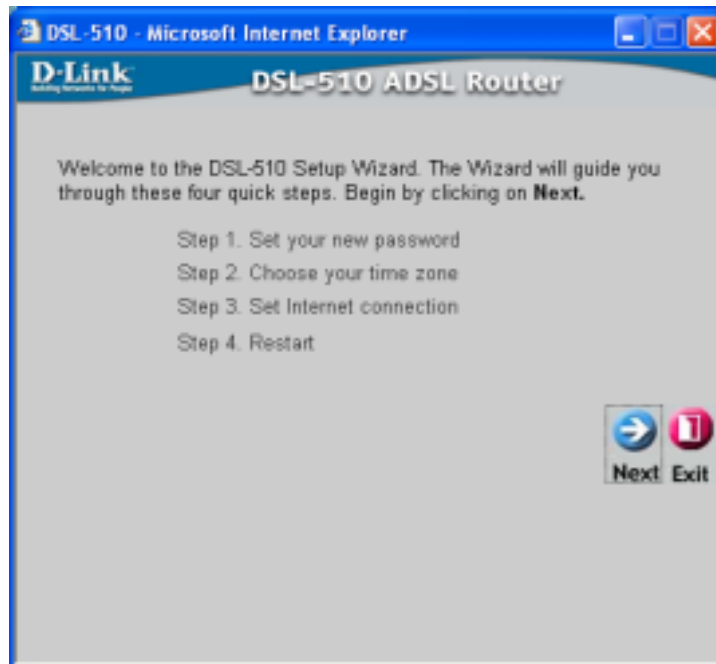
Check your IP supplier information.

If you are unsure of which setting to select, please contact your Internet Service Provider.

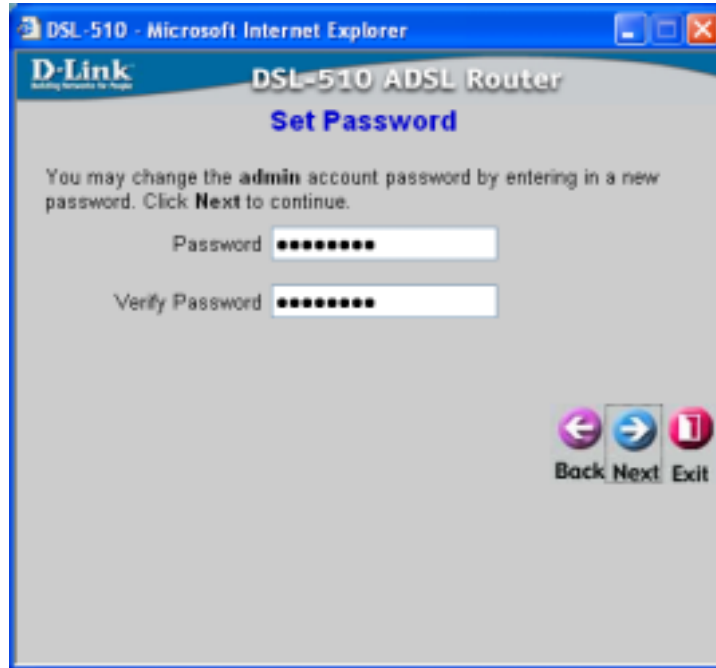
1. Once you have logged in, the **Home** screen will appear. Click **Run Wizard** button.



2. The Setup Wizard screen will appear. Follow the Wizard step by step to quickly configure the DSL-510. Click **Next** button.



- Set up your new password. It is recommended that you change the 510admin password for security purposes. Enter in your new password. Enter it in a second time for verification. Click the **Next** button.



- There will be four options to select from. Please select the appropriate option that is used by your ISP.

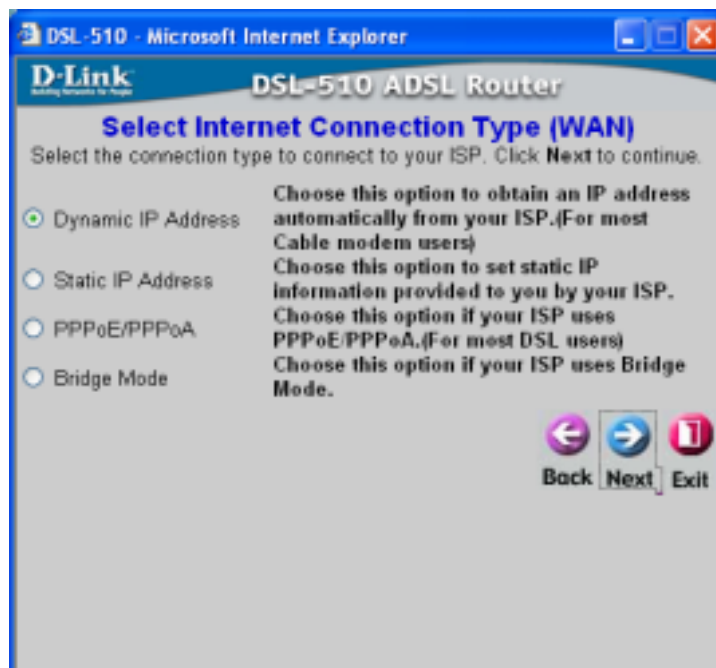
Dynamic IP Address: Select this option to manually input the IP address that your ISP assigned to you. Please see **Dynamic IP Address** section.

Static IP Address: Select this option to manually input the IP address that your ISP assigned to you. Please see **Static IP Address** section.

PPPoE/PPPoA: Select this option if your ISP requires the use of PPPoE/PPPoA to connect to connect to their services. Please see **PPPoE/PPPoA** section.

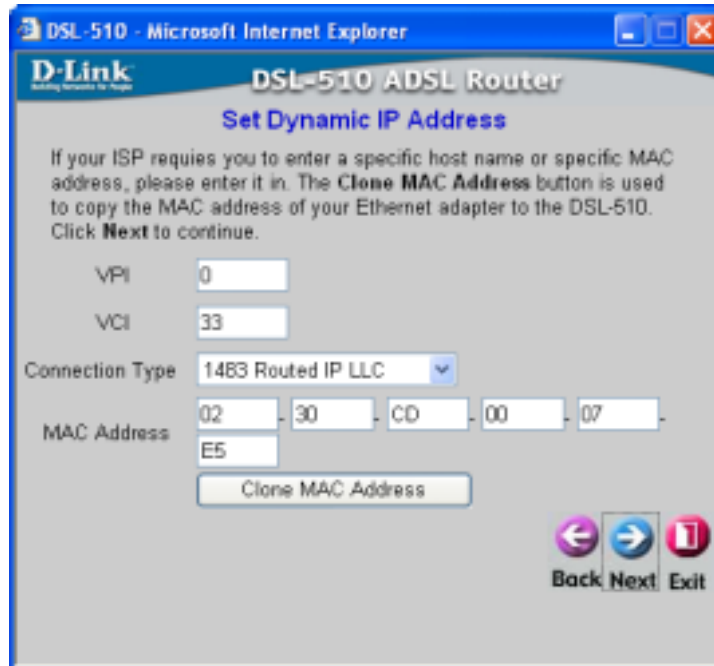
Bridge Mode: Select this option to manually input the IP address that your ISP assigned to you. Please see **Bridge Mode** section.

Once you have made the appropriate selection, click **Next** button.



Dynamic IP Address

If your selected **Dynamic IP Address**, you will see the following page. You will need to enter in **VPI**, **VCI** and select your connection type. The information provided to you by your ISP. Click **Next** button.



Static IP Address

If your selected **Static IP Address**, you will see the following page. Enter in the IP address information provided to you by your ISP. You will need to enter in **VPI**, **VCI**, **WAN IP Address**, **WAN Subnet Mask**, **WAN Gateway Address**, **DNS** and select your connection type. Click **Next** button.



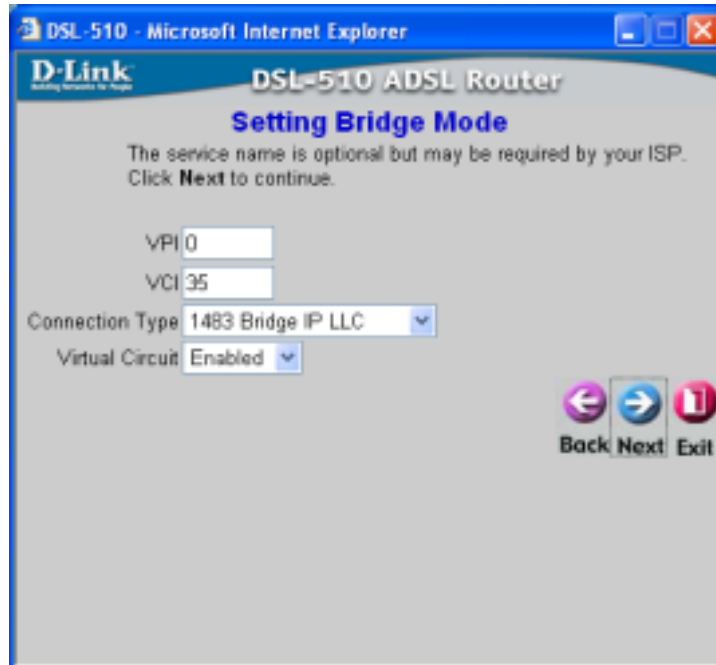
PPPoE/PPPoA

If your selected **PPPoE/PPPoA**, you will see the following page. Enter in the **Use Name**, **Password**, **VPI**, **VCI** and select your connection type provided to you by your ISP. Click **Next** button.

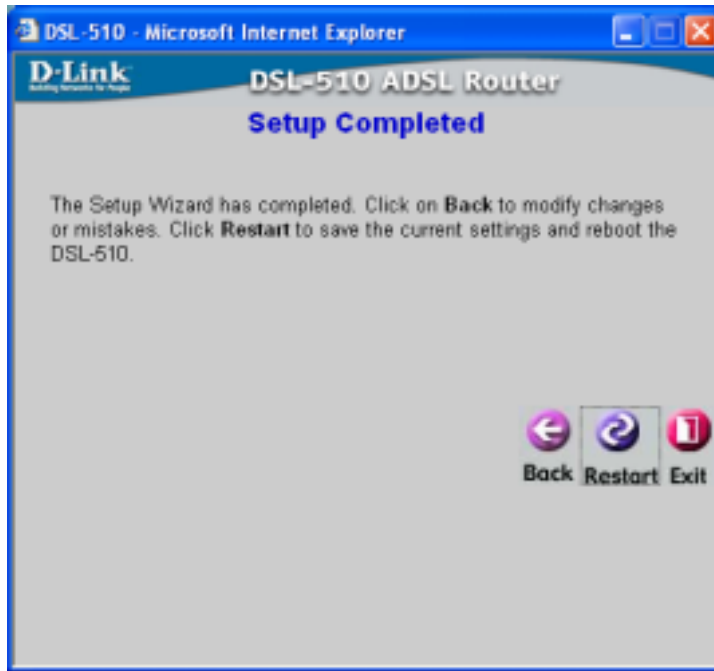


Bridge Mode

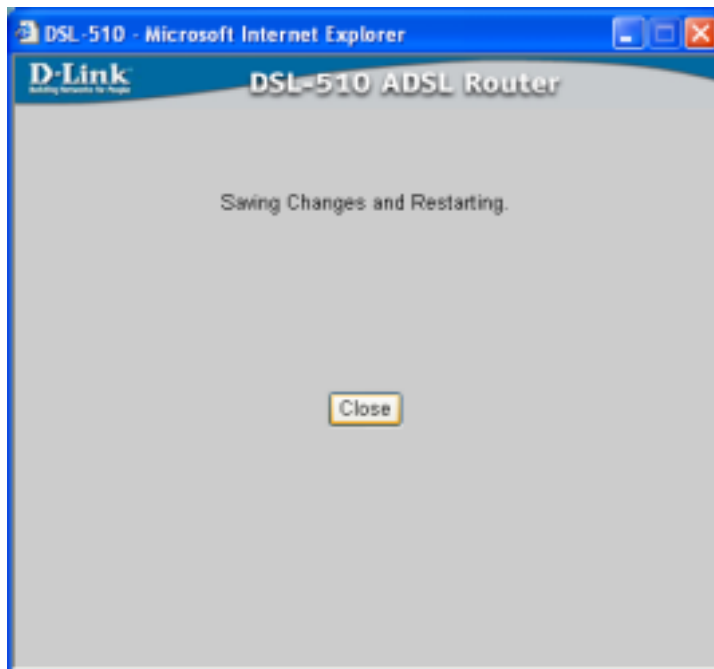
If your selected **Bridge Mode**, you will see the following page. You will need to enter in **VPI**, **VCI** and select your connection type. The information provided to you by your ISP. Click **Next** button.



5. At this point, the Setup Wizard has completed. Click Restart to save the settings and reboot the DSL-510.



6. The DSL-510 will save the changes and reboot. Click **Close** button to close out the Setup Wizard screen.



You setup of the DSL-510 is now complete. You should be able to access the Internet.

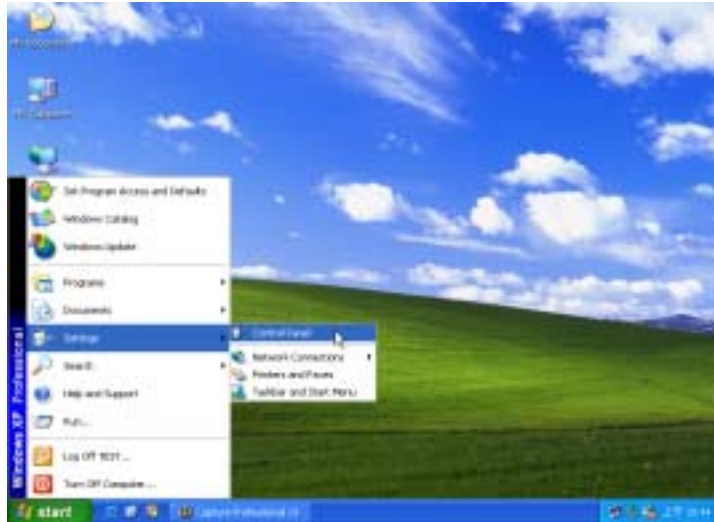
Configuring IP When Setting Your Computer

If you connection type as **Dynamic IP Address**, **Static IP Address** and **PPPoE/PPPoA**, Don't care configuring IP setting on you Computer. Your computer is used the ADSL Router DHCP server.

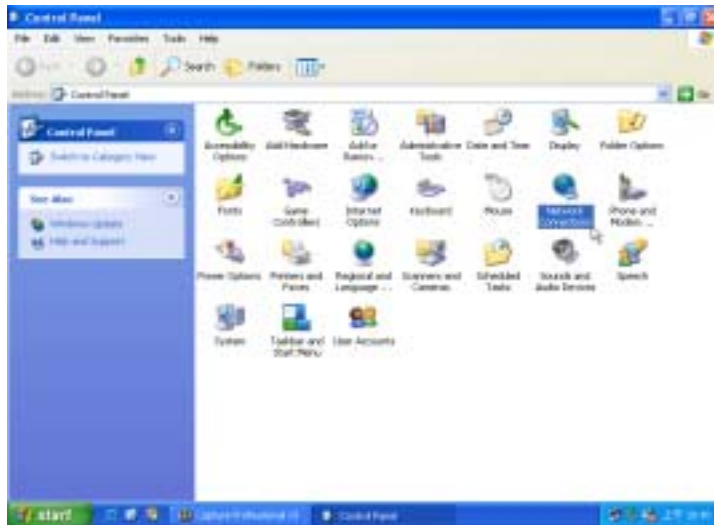
If you connection type as **Bridge Mode**, Please following settings steps under list:

Windows XP IP Settings for Bridge Mode

1. In the Windows task bar, click the **Start** button, point to **Settings**, and then click **Control Panel**.



2. Double-click the **Network Connections** icon.



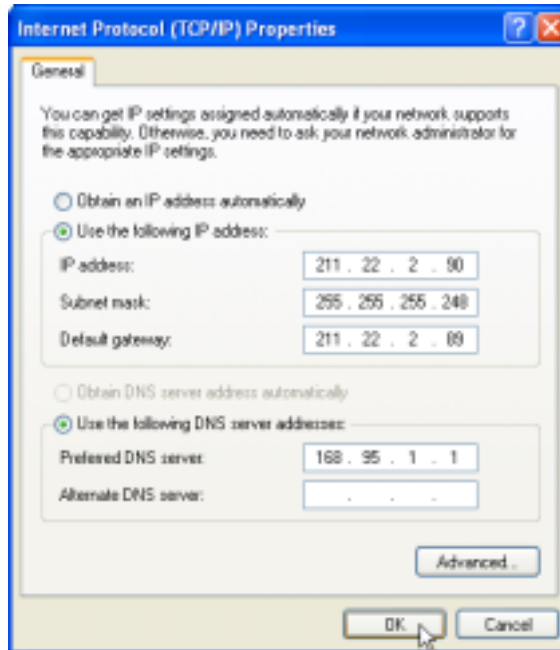
3. In the LAN or High-Speed Internet window, right-click on icon corresponding to your network interface card (NIC) and select **Properties**. (This icon may be labeled *Local Area Connection*)



4. In the **General** tab of the **Local Area Connection Properties** menu. Highlight **Internet Protocol (TCP/IP)** under "This connection uses the following items." by click on it once. Click on the **Properties** button.



5. The **Internet Protocol (TCP/IP) Properties** window appears. Under the **General** tab, select **Use the following IP address:**, enter the **IP address**, **Subnet Mask**, and **Default Gateway** given to you by your ISP or ADSL service provider, then select **Use the following DNS server addresses:**, enter the DNS settings given to you by your ISP or ADSL service provider. Click **OK**.



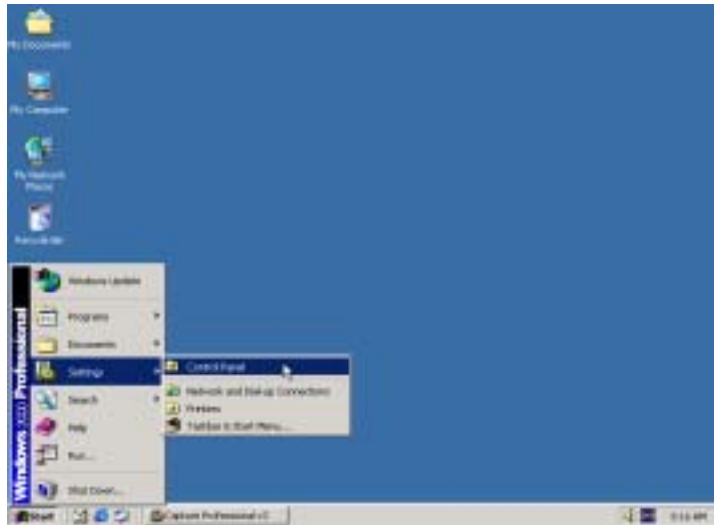
6. The **Local Area Connection Properties** window appears. Click **OK** button.



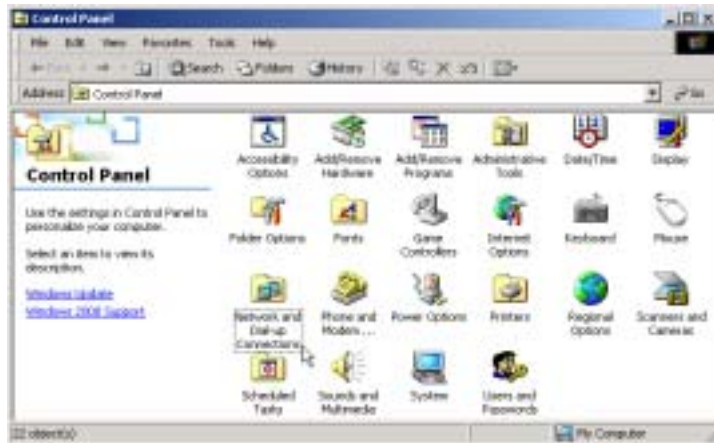
Your computer is now ready to use the Bridge Mode connection type.

Windows 2000 IP Setting for Bridge Mode

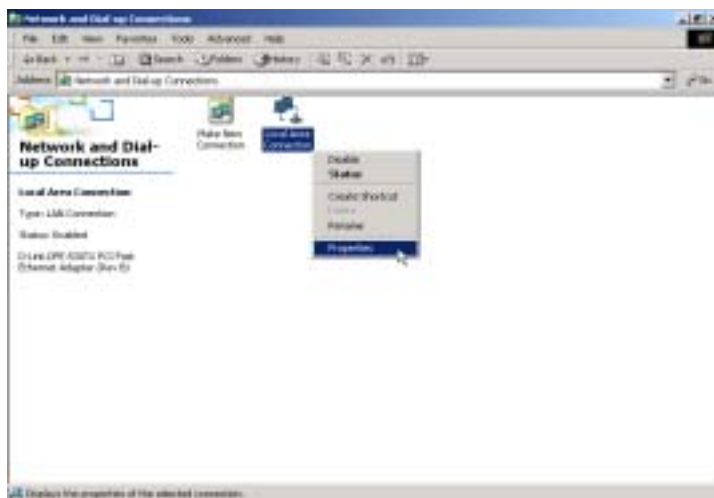
1. In the Windows task bar, click the **Start** button, point to **Settings**, and then click **Control Panel**.



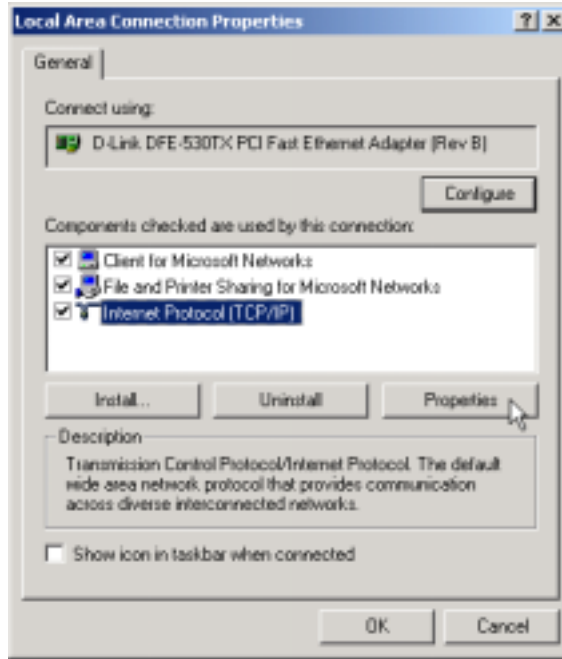
2. Double-click the **Network and Dial-up Connections** icon.



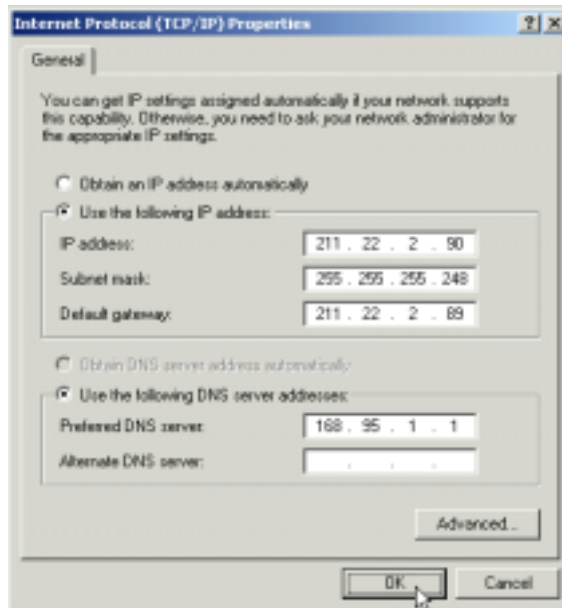
3. In the Network and Dial-up Connections window, right-click the **Local Area Connection** icon, and then select **Properties**.



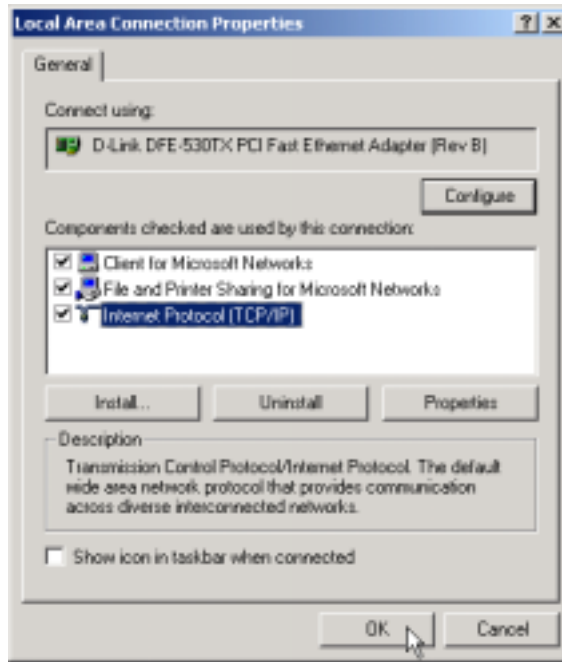
4. In the Local Area Connection Properties dialog box, select **Internet Protocol (TCP/IP)**, and then click **Properties**.



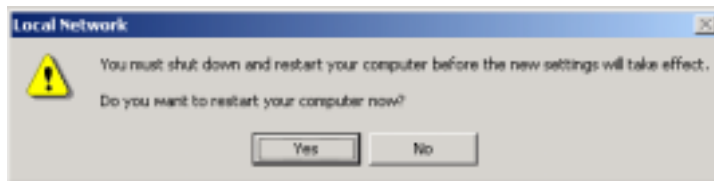
5. The **Internet Protocol (TCP/IP)** window appears. Under the **General** tab, select **Use the following IP address**. Enter the **IP address**, **Subnet Mask**, and **Default Gateway** given to you by your ISP or ADSL service provider, then select **Use the following DNS server addresses**; enter the DNS settings given to you by your ISP or ADSL service provider. Click **OK**.



6. The **General** tab will again appear. Click **OK** button.

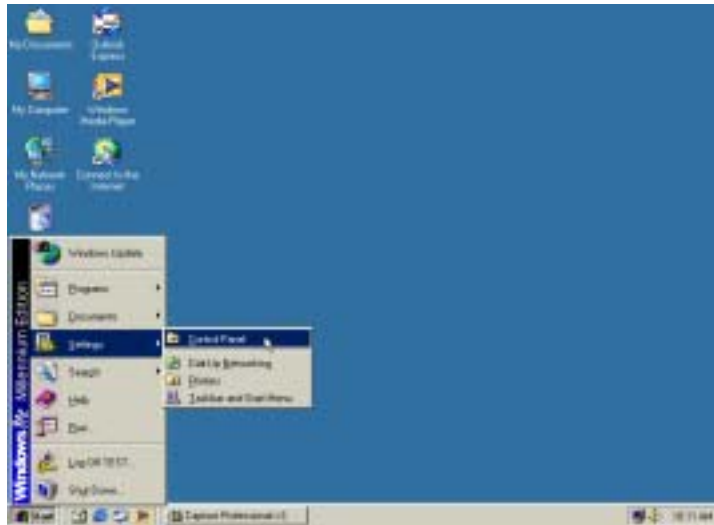


7. The **Local Network** window appears. You need to restart your computer for the changes to go into effect. Click **Yes**.

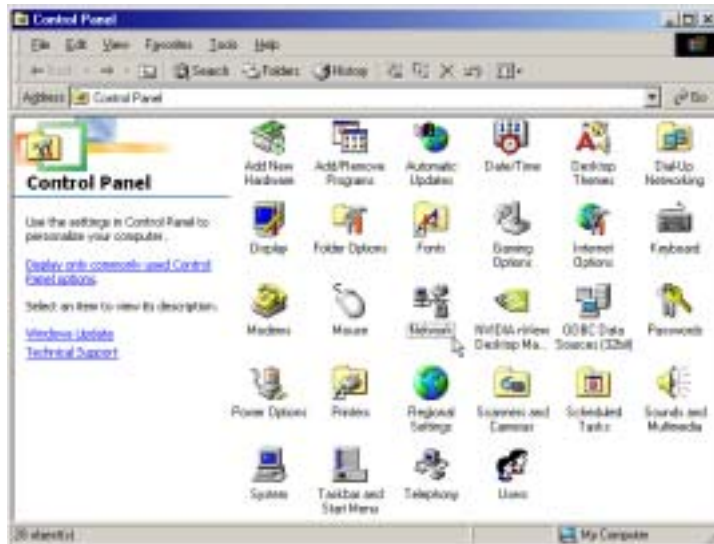


Windows ME IP Setting for Bridge Mode

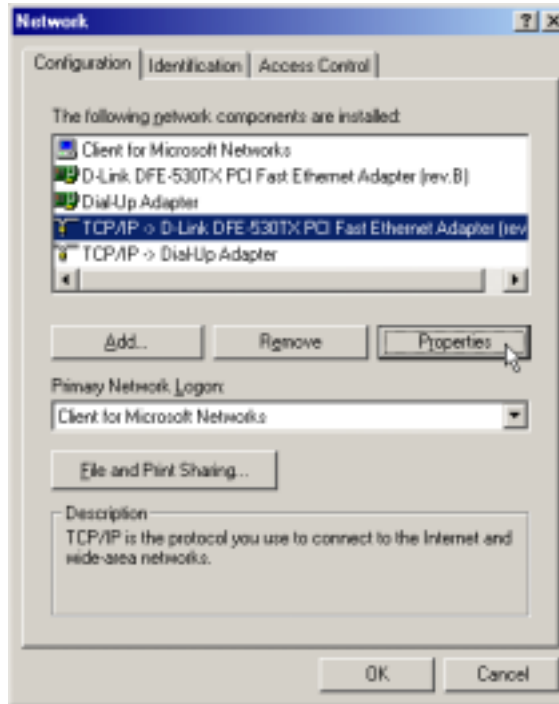
1. In the Windows task bar, click the **Start** button, point to **Settings**, and then click **Control Panel**.



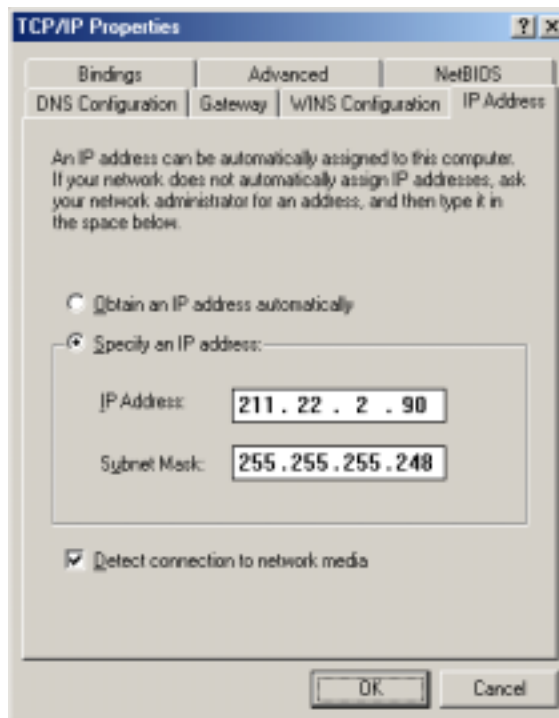
2. Double-click the **Network** icon.



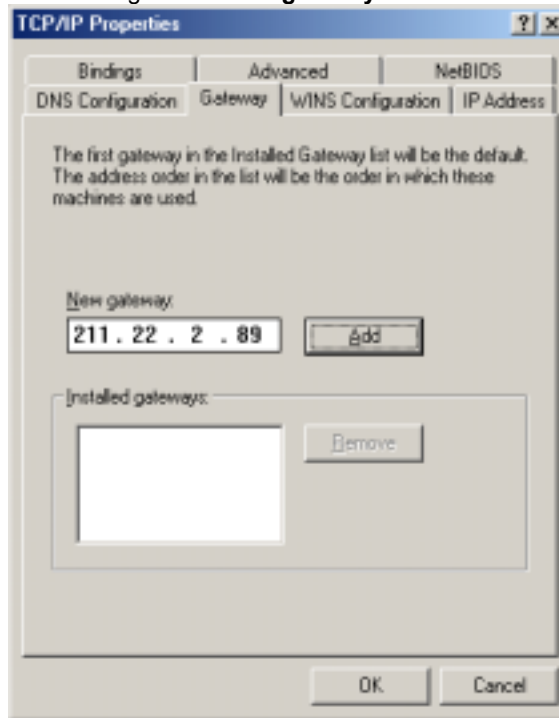
3. In the Network windows appears. Select the **Configuration** tab, select **TCP/IP** protocol line that has been associated with your network card/adaptor. and then click **Properties**.



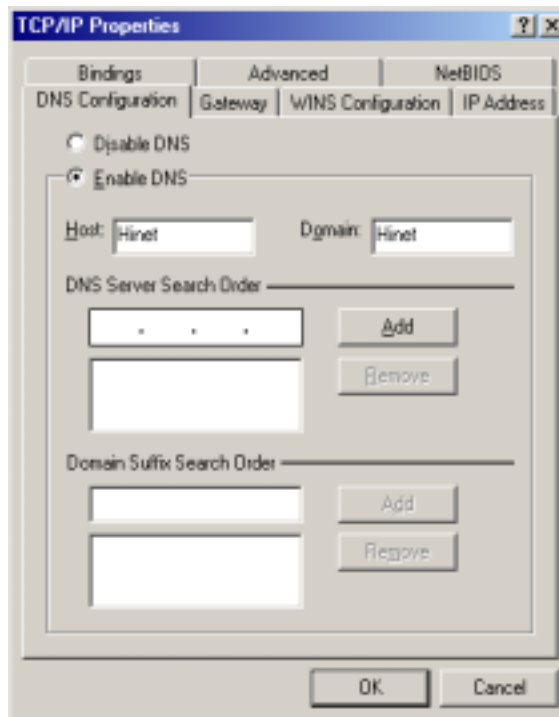
4. The **TCP/IP Properties** window appears. Select the **IP Address** tab and then select the **Select an IP address** option. Enter the **IP Address** and **Subnet Mask** settings given to you by your ISP or ADSL service provider.



5. Select **Gateway** tab and enter the IP settings in the **New gateway** field. Click **Add**.



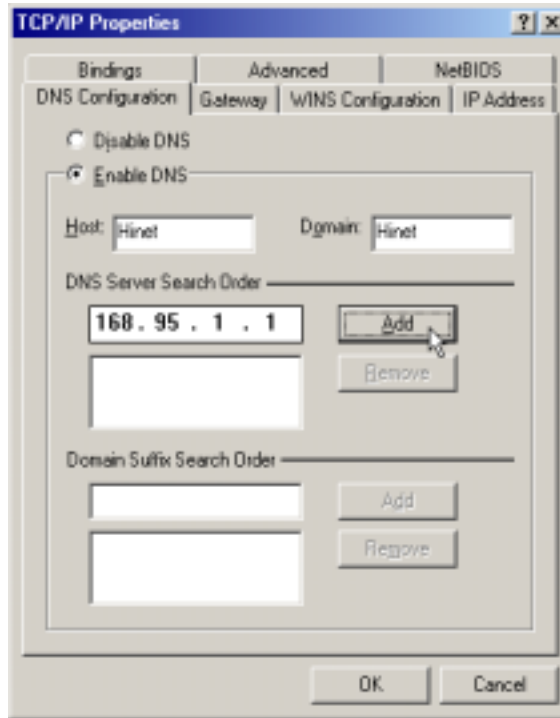
6. Select the **DNS Configuration** tab. Select the **Enable DNS** option.



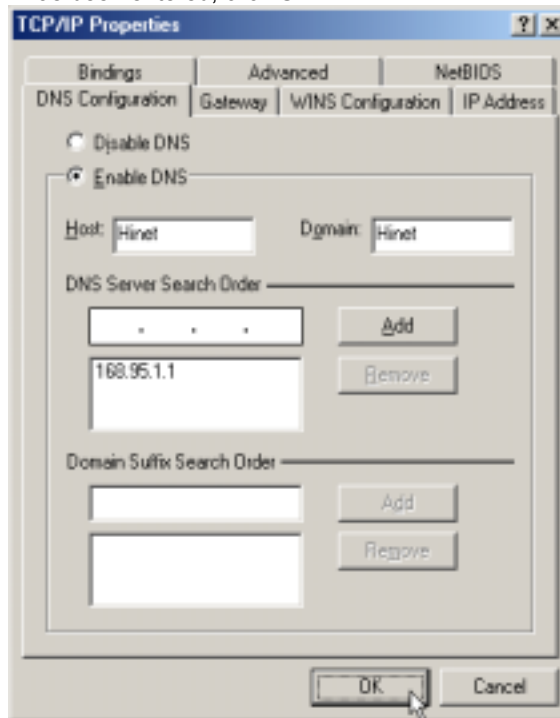
7. Type in your host name in the **Host:** field.

8. Type in your domain name in the **Domain:** field.

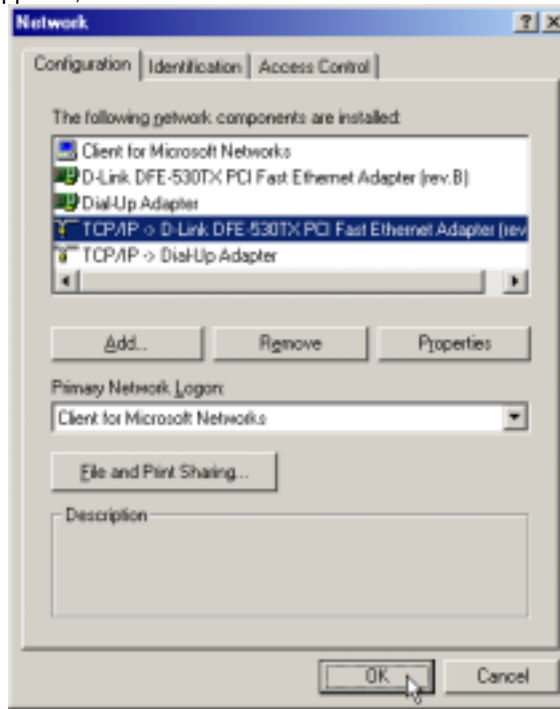
9. Enter the DNS settings in the **DNS Server Order** field and click **Add**. If you have more than one DNS IP address, repeat this step. You can have up to 3 DNS servers listed here.



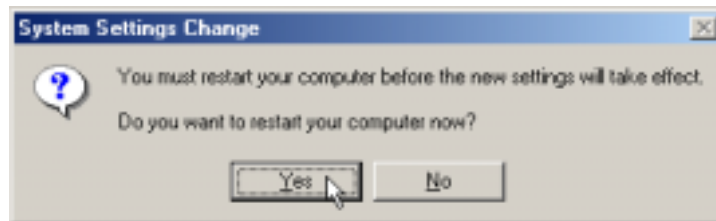
10. After all the TCP/IP information has been entered, click **OK**.



11. The **Network** window again appears, click **OK** button.



14. The **System Settings Change** window appears. You need to restart your computer for the changes to go into effect. Click **Yes**.



Windows 98SE IP Setting for Bridge Mode

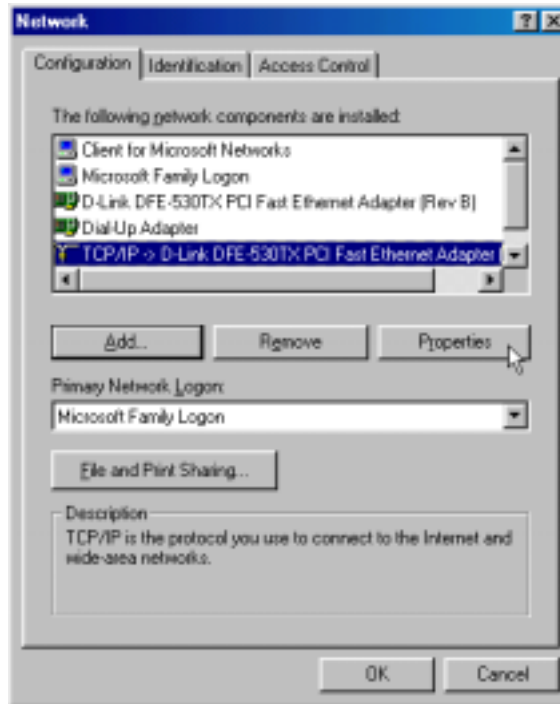
1. In the Windows task bar, click the **Start** button, point to **Settings**, and then click **Control Panel**.



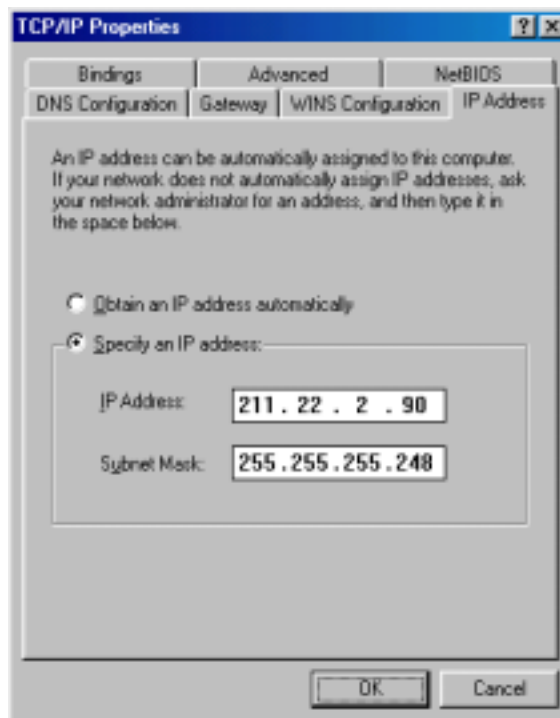
2. Double-click the **Network** icon.



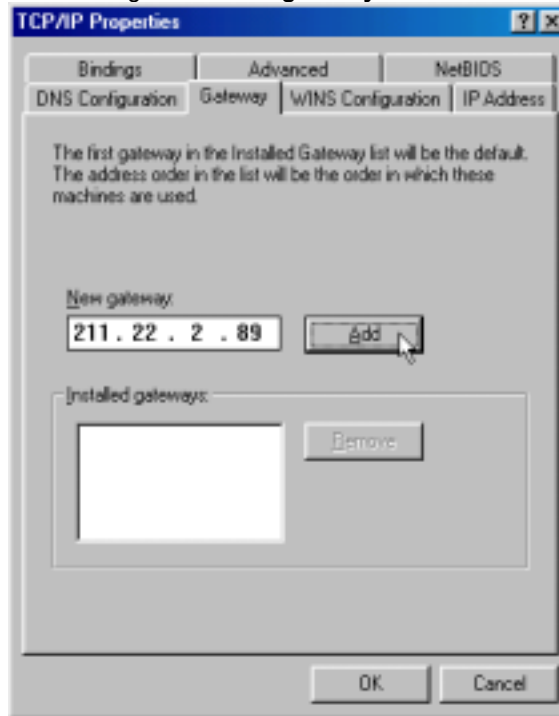
3. In the Network windows appears. Select the **Configuration** tab, select **TCP/IP** protocol line that has been associated with your network card/adaptor and then click **Properties**.



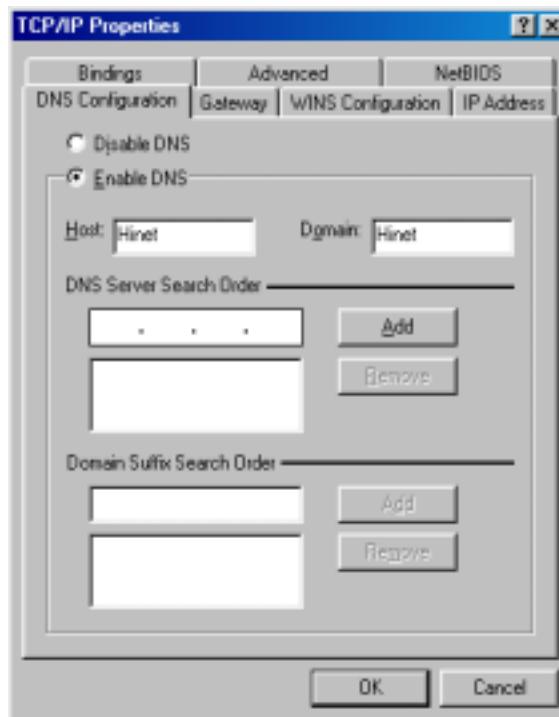
4. The **TCP/IP Properties** window appears. Select the **IP Address** tab and then select the **Select an IP address** option. Enter the **IP Address** and **Subnet Mask** settings given to you by your ISP or ADSL service provider.



5. Select **Gateway** tab and enter the IP settings in the **New gateway** field. Click **Add**.



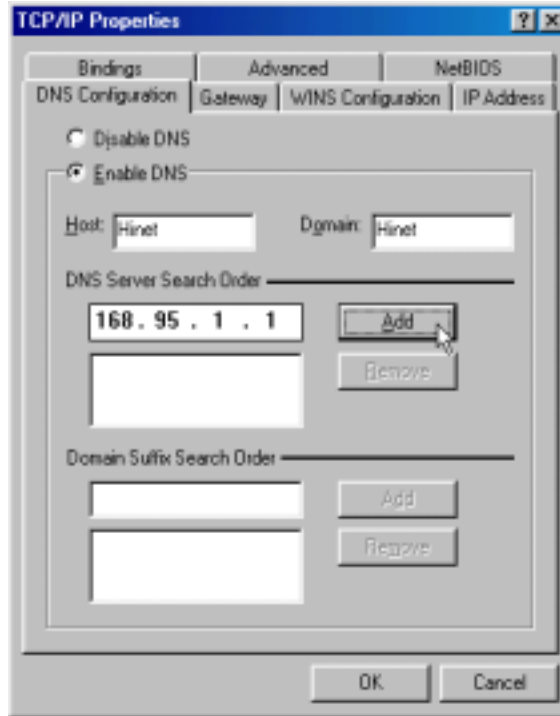
6. Select the **DNS Configuration** tab. Select the **Enable DNS** option.



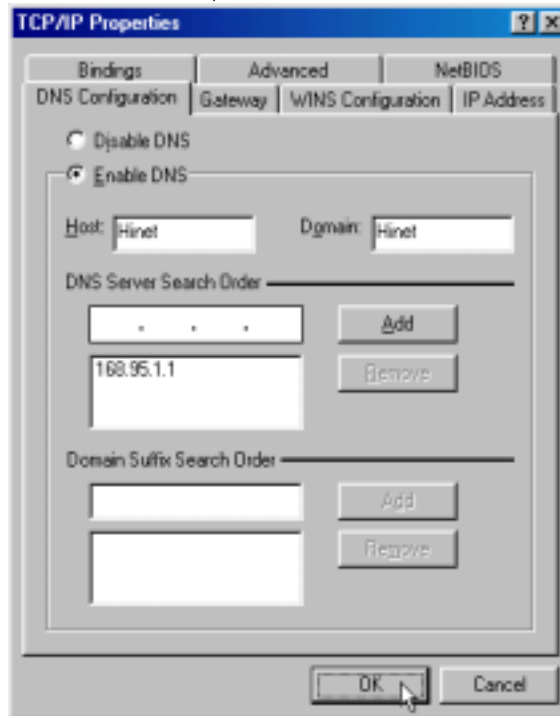
7. Type in your host name in the **Host:** field.

8. Type in your domain name in the **Domain:** field.

9. Enter the DNS settings in the **DNS Server Order** field and click **Add**. If you have more than one DNS IP address, repeat this step. You can have up to 3 DNS servers listed here.



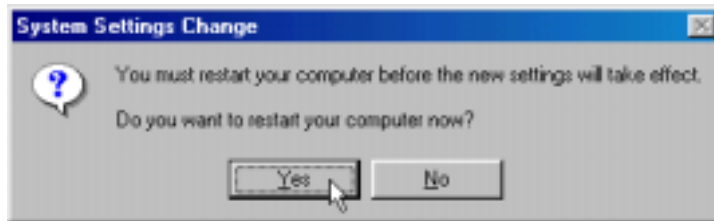
10. After all the TCP/IP information has been entered, click **OK**.



11. The **Network** window again appears, click **OK** button.



12. The **System Settings Change** window appears. You need to restart your computer for the changes to go into effect. Click **Yes**.



Chapter 4 – Web-based Configuration

This chapter describes how to use the embedded web-based management software to configure the Router for additional PVC connection profiles, to change the LAN IP address, to change the global WAN IP address and to perform other management functions.

Home

Wizard

The Setup Wizard page is the first page that appears when logging into the web-based management interface. The Setup Wizard is a utility used to quickly configure the DSL-510. It will guide you through for quick and basic steps to help you connect to your ISP. You will be connected to your ISP (Internet Service Provider) and have Internet access within minutes.



WAN

WAN is short for Wide Area Network. The WAN settings can be referred to as the Public settings. All IP information in the WAN settings are public IP addresses which are accessible on the Internet.

The WAN settings consist of four options: **Dynamic IP Address**, **Static IP Address**, **PPPoE/PPPoA** and **Bridge Mode**. Select the appropriate option and fill in the information needed to connect to your ISP.

Home > WAN > Dynamic IP Address

Choose Dynamic IP Address to obtain IP address information automatically from your ISP. Select this option if your ISP does not give you any IP numbers to use. You will need to enter in the VPI, VCI and select connection type provided to you by your ISP.

VPI: If instructed to change this, type in the VPI value for the initial connection.

VCI: If instructed to change this, type in the VCI value for the initial connection.

Connection Type: Change connection method and packet encapsulation technique as instructed by your ISP. The available connection types are *1483 Bridge/Router LLC*, *1483 Bridge/Router VC-Mux*, *RFC-1577-IPoA*, from the pull-down menu. Default Connection Type = *1483 Bridge/Router LLC*.

Virtual Circuit: Selection Enable or Disable.

MAC Address: The default MAC address is set to the WAN's physical interface MAC address on the DSL-510. you can use the "Clone MAC Address" button to copy the MAC address of the Ethernet Card installed by your ISP and replace the WAN MAC address with this MAC address. It is not recommended that you change the default MAC address unless required by your ISP.

ATM

Service Category: UBR and CBR are supported from the ATM.

Bandwidth: Bandwidth setting takes effect only when the CBR is selected. The maximum available bandwidth is from the upstream data rate of ADSL status page.

The screenshot shows the configuration page for the DSL-510 ADSL Router. The page is titled "DSL-510 ADSL Router" and has a navigation menu with "Home", "Advanced", "Tools", "Status", and "Help". The "Home" tab is selected. On the left side, there is a sidebar with buttons for "Wizard", "WAN", "LAN", "DHCP", and "DNS". The "WAN" button is highlighted in yellow.

The main content area is titled "WAN Settings" and contains the following information:

Please select the appropriate option to connect to your ISP.

- Dynamic IP Address: Choose this option to obtain an IP address automatically from your ISP.
- Static IP Address: Choose this option to set static IP information provided to you by your ISP.
- PPPoE/PPPoA: Choose this option if your ISP uses PPPoE/PPPoA for your DSL service.
- Bridge Mode: Choose this option if your ISP uses Bridge Mode.

Dynamic IP:

VPI:

VCI:

Connection Type:

Virtual Circuit:

MAC Address:

ATM:

Service Category:

Bandwidth: Mbps

Home > WAN > Static IP Address

Choose Static IP Address if all WAN IP information is provided to you by your ISP. You will need to enter in the VPI, VCI, IP Address, Subnet Mask, ISP Gateway Address, DNS Address and select connection type provided to you by your ISP. Each IP address entered in the fields must be in the appropriate IP form, which are four IP octets separated by a dot (x.x.x.x). The Router will not accept the IP address if it is not in this format.

VPI: If instructed to change this, type in the VPI value for the initial connection.

VCI: If instructed to change this, type in the VCI value for the initial connection.

Connection Type: Change connection method and packet encapsulation technique as instructed by your ISP. The available connection types are 1483 Bridge/Router LLC, 1483 Bridge/Router VC-Mux, RFC-1577-IPoA, form the pull-down menu. Default Connection Type = 1483 Bridge/Router LLC.

Virtual Circuit: Selection Enable or Disable.

IP Address: Provided by ISP. Check with your ISP to get this information. Type in the Global IP address for this interface.

Subnet Mask: If you are assigned Static IP addresses and Subnet mask, Type in Subnet mask for this interface.

ISP Gateway Address: Specify the IP address that identifies the ISP server through which your Internet connection will be routed.

Primary/Secondary DNS Address: This option is useful only when the Router is configured to act as a DHCP Server for your LAN. Enter the Primary and Secondary DNS Server address provided by your ISP.

ATM

Service Category: UBR and CBR are supported form the ATM.

Bandwidth: Bandwidth setting takes effect only when the CBR is selected. The maximum available bandwidth is from the upstream data rate of ADSL status page.



Home > WAN > PPPoE/PPPoA

Choose PPPoE/PPPoA if your ISP uses PPPoE/PPPoA connection. Your ISP will provide you with a username, password, VPI, VCI and select connection type. This option is typically used for DSL service.

User Name: Your PPPoE/PPPoA user name provided by your ISP

Password: Your PPPoE/PPPoA password provided by your ISP

Service Name: Enter the service name provided by your ISP. (optional)

VPI: If instructed to change this, type in the VPI value for the initial connection.

VCI: If instructed to change this, type in the VCI value for the initial connection.

Connection Type: Change connection method and packet encapsulation technique as instructed by your ISP. The available connection types are *PPPoE LLC*, *PPPoE VC-Mux*, *PPPoA LLC*, *PPPoA VC-Mux*, from the pull-down menu. Default Connection Type = *PPPoE LLC*.

Virtual Circuit: Selection Enable or Disable.

MTU: Maximum Transmission Unit indicates the network stack of any packet is larger than this value will be fragmented before the transmission. During the PPP negotiation, the peer of the PPP connection will indicate its MRU and will be accepted. The actual MTU of the PPP connection will indicate its MRU and will be accepted. The actual MTU of the PPP connection will be set to the smaller one of MTU and the peer's MRU. The default is value 1492

MRU: Maximum Receive Unit indicates the peer of PPP connection the maximum size of the PPP information field this device can be received. The default value is 1492 and is used in the beginning of the PPP negotiation. In the normal negotiation, the peer will accept this MRU and will not send packet with information field larger than this value.

MSS: Maximum Segment Size is the largest size of data that TCP will send in a single IP packet. When a connection is established between a LAN client and a host in the WAN connection handshake. The default value is 1432.

Authentication: The available selection types are CHAP, PAP, Auto. Default Type = Auto.

Auto-Reconnect: If enabled, the Router will automatically connect to your ISP after your system is restarted or if the connection is dropped.

ATM

Service Category: UBR and CBR are supported from the ATM.

Bandwidth: Bandwidth setting takes effect only when the CBR is selected. The maximum available bandwidth is from the upstream data rate of ADSL status page.



DSL-510
 ADSL Router

[Wizard](#)

[WAN](#)

[LAN](#)

[DHCP](#)

[DNS](#)

Home
Advanced
Tools
Status
Help

WAN Settings

Please select the appropriate option to connect to your ISP.

Dynamic IP Address Choose this option to obtain an IP address automatically from your ISP.

Static IP Address Choose this option to set static IP information provided to you by your ISP.

PPPoE/PPPoA Choose this option if your ISP uses PPPoE/PPPoA for most DSL services.

Bridge Mode Choose this option if your ISP uses Bridge Mode.

PPPoE/PPPoA

User Name:

Password:

Service Name:

MAC:

VPI:

VCI:

Connection Type:

Virtual Circuit:

MTU:

MRU:

MSS:

Authenticity:

Auto-reconnect:

USB

Device Category:

Bandwidth: Mbps

✔ ✘ +
 Apply Cancel Help

Home > WAN > Bridge Mode

Choose Bridge Mode if all WAN IP information is provided to you by your ISP. You will need to enter in the VPI, VCI and select connection type provided to you by your ISP.

VPI: If instructed to change this, type in the VPI value for the initial connection.

VCI: If instructed to change this, type in the VCI value for the initial connection.

Connection Type: Change connection method and packet encapsulation technique as instructed by your ISP. The available connection types are *1483 Bridge LLC*, *1483 Bridge VC-Mux*, from the pull-down menu. Default Connection Type = *1483 Bridge LLC*.

Virtual Circuit: Selection Enable or Disable.

ATM

Service Category: UBR and CBR are supported from the ATM.

Bandwidth: Bandwidth setting takes effect only when the CBR is selected. The maximum available bandwidth is from the upstream data rate of ADSL status page.



LAN

LAN is short for Local Area Network. This is considered your internal network. These are the IP settings of the LAN interface for the DSL-510. These settings may be referred to as Private settings. You may change the LAN IP address if needed. The LAN IP address is private to your internal network and cannot be seen on the Internet.

IP Address: The IP address of the LAN interface. The default IP address is 192.168.0.2.

Subnet Mask: The subnet mask of the LAN interface. The default subnet mask is 255.255.255.0.



DHCP

DHCP stands for Dynamic Host Control Protocol. The DSL-510 has a built-in DHCP server. The DHCP Server will automatically assign an IP address to the computers on the LAN/private network. Be sure to set your computers to be DHCP clients by setting their TCP/IP settings to **“Obtain an IP Address Automatically.”** When you turn your computers on, they will automatically load the proper TCP/IP settings provided by the DSL-510. The DHCP Server will automatically allocate an unused IP address from the IP address pool to the requesting computer. You must specify the starting and ending address of the IP address pool.

DHCP Server: Click *Enable* to turn on the DNS forwarding service, which forwards to your LAN PCs the Domain Name System server addresses that your PPP connection learns from your ISP. This option can only be used when the Router is configured to act as a DHCP server for your PCs.

If you click *Disable*, you must configure DNS addresses manually on each PC or in the fields below.

Starting IP Address: The starting IP address for the DHCP server's IP assignment.

Ending IP Address: The ending IP address for the DHCP server's IP assignment.

Lease Time: The length of time for the IP lease.

DHCP Relay

In this mode the Router is an intermediary device or relay agent between a DHCP server owned by the ISP and host systems on your LAN.



DNS

The DNS Configuration page allows the user to set the configuration of DNS proxy.

DNS proxy selection:

(1) Disable DNS Proxy:

The LAN port does not process the DNS query message.

(2) Use Auto Discovered DNS Servers Only:

The DNS proxy will store the DNS server IP addresses obtained from DHCP client or PPP into the table.

(3) Use User Configured DNS Servers Only:

The DNS proxy will use the user-configured preferred DNS server and alternate DNS server.

(4) Auto Discovery+User Configured:

The DNS proxy's table has all the IP addresses of dynamically obtained and user configured DNS servers.

User Configuration:

Primary DNS Address: Enter the Primary DNS server addresses provided by your ISP.

Secondary DNS Address: Enter the Secondary DNS server addresses provided by your ISP.



Advanced

Virtual Server

The DSL-510 can be configured as a virtual server so that remote users accessing Web or FTP services via the public IP address can be automatically redirected to local servers in the LAN network.

The DSL-510 firewall feature filters out unrecognized packets to protect your LAN network so all computers networked with the

DSL-510 are invisible to the outside world. If you wish, you can make some of the LAN computers accessible from the Internet by enabling Virtual Server. Depending on the requested service, the DI-604 redirects the external service request to the appropriate server within the LAN network.

The DSL-510 is also capable of port-redirection meaning incoming traffic to a particular port may be redirected to different port on the server computer.

Each virtual services that are created will be listed at the bottom of the screen in the Virtual Servers List. There are already pre-defined virtual services already in the table. You may use them by enabling them and assigning the server IP to use that particular virtual service.

Private IP: The server computer in the LAN network that will be providing the virtual services.

Protocol Type: The protocol used for the virtual service.

Private Port: The port number of the service used by the Private IP computer.

Public Port: The port number on the WAN side that will be used to access the virtual service.

Schedule: This is follow **Schedule** Configuration. Default setting is None. When **Schedule** Configuration has new time schedule, this item will be increase new time schedule item.



Filters

Filters are used to deny LAN computers from accessing the Internet. The Router can be setup to deny internal computers by their IP or MAC addresses. The DSL-510 can also block users from accessing restricted web sites.

Advanced > Filters > Outbound

Filters-Outbound: Use IP Outbound Filters to deny LAN IP addresses from accessing the Internet. You can deny specific port numbers or all ports for the specific IP address.

Source IP: IP address criteria for the source computer(s) from which the packet originates.

Destination IP: IP address rule criteria for the destination computer(s) (i.e., the IP address of the computer to which the packet is being sent).

Source Port: Port number criteria for the computer(s) from which the packet originates. This field will be dimmed (unavailable for entry) unless you have selected TCP or UDP as the protocol. See the description of Source IP Address for the selection option.

Destination Port: Port number criteria for the computer(s) (i.e., the port number of the type of computer to which the packet is being sent). This field will be dimmed (unavailable for entry) unless you have selected TCP or UDP as the protocol. See the description of Source IP Address for the selection option.

Protocol: drop down menu allows you to select the transport protocol for this access policy. If the desired transport protocol is not listed in the menu, then you can chose "OTHER" option and enter the desired IP based transport protocol number in the following text box.

Enable NAT: NAT (Network Address Translation) is a method for disguising the private IP addresses you use on your LAN as the public IP address you use on the Internet. You define NAT rules that specify exactly how and when to translate between public and private IP addresses. Enable NAT item is enabled by default. You can enable or disable NAT by selecting the *Enable* or *Disable* option in the configuration menu and submitting the settings.

Action: menu helps in defining this policy as Permit or Deny type policy. Permit type policies allow the traffic matched by the policy selectors to pass through, where as Deny type policy blocks that traffic.

Schedule: This is follow **Schedule** Configuration. Default setting is None. When **Schedule** Configuration add new time schedule, this item will follow new time schedule item.



Advanced > Filters > Inbound

Filters-Inbound: Use IP Inbound Filters to deny WAN IP addresses from accessing the internal network. You can deny specific port numbers or all ports for the specific IP address.

Source IP: IP address criteria for the source computer(s) from which the packet originates.

Destination IP: IP address rule criteria for the destination computer(s) (i.e., the IP address of the computer to which the packet is being sent).

Source Port: Port number criteria for the computer(s) from which the packet originates. This field will be dimmed (unavailable for entry) unless you have selected TCP or UDP as the protocol. See the description of Source IP Address for the selection option.

Destination Port: Port number criteria for the computer(s) (i.e., the port number of the type of computer to which the packet is being sent). This field will be dimmed (unavailable for entry) unless you have selected TCP or UDP as the protocol. See the description of Source IP Address for the selection option.

Protocol: drop down menu allows you to select the transport protocol for this access policy. If the desired transport protocol is not listed in the menu, then you can chose "OTHER" option and enter the desired IP based transport protocol number in the following text box.

Enable NAT: NAT (Network Address Translation) is a method for disguising the private IP addresses you use on your LAN as the public IP address you use on the Internet. You define NAT rules that specify exactly how and when to translate between public and private IP addresses. Enable NAT item is enabled by default. You can enable or disable NAT by selecting the *Enable* or *Disable* option in the configuration menu and submitting the settings.

Action: menu helps in defining this policy as Permit or Deny type policy. Permit type policies allow the traffic matched by the policy selectors to pass through, where as Deny type policy blocks that traffic.

Schedule: This is follow **Schedule** Configuration. Default setting is None. When **Schedule** Configuration add new time schedule, this item will follow new time schedule item.



Schedule

This is the schedule of time when the IP Filter will be enabled.

Schedule Name: defines the name of this time schedule.

Schedule: drop down menus help you in configuring the start and end days of the time interval in one option.



if add new time schedule, it will increase **Virtual Server** Configuration and **Filters** Configuration Schedule item.

Routing

The Route Table page displays routing table and allows the user to manually enter the routing entry. The routing table will display the routing status of Destination, Netmask, Gateway and Interface. The interface lo0 means the loop back interface; and ppp1 means the PPP interface. The Gateway is the learned Gateway.

Destination: Specifies the IP address of the destination computer. The destination can be specified as the IP address of a specific computer or an entire network. It can also be specified as all zeros to indicate that this route should be used for all destinations for which no other route is defined (this is the route that creates the default gateway)

Netmask: Indicates which parts of the destination address refer to the network and which parts refer to a computer on the network.

Gateway: This field allows the user to enter the IP address of the gateway device that allows the router to contact the remote network or the host for Specified IP or select an Interface for the Gateway.

Interface: This field allows user to select a Network Interface from a list (PVCs, PPP sessions and LAN). This option lets the user to associate the system-wide Default Gateway to a Network Interface, static or dynamic, and provides a way to fix the Default Gateway to a dynamic Interface before the Interface is established.

The screenshot displays the D-Link DSL-510 ADSL Router's web interface. The 'Advanced' tab is active, and the 'Routing Table' section is visible. The routing table contains two entries:

#	Destination	Netmask	Gateway	Interface
1	192.168.0.0	255.255.255.0	192.168.0.2	
2	127.0.0.1	255.0.0.0	127.0.0.1	lo0

DMZ

If you have a client PC that cannot run Internet applications properly from behind the DSL-510, then you can set the client up to unrestricted Internet access. It allows a computer to be exposed to the Internet. This feature is useful for gaming purposes. Enter the IP address of the internal computer that will be the DMZ host. Adding a client to the DMZ (Demilitarized Zone) may expose your local network to a variety of security risks, so only use this option as a last resort.



Firewall

Firewall Rules is an advance feature used to deny or allow traffic from passing through the DSL-510. It works in the same way as IP Filters with additional settings. You can create more detailed rules for the Router.

DoS Protection: Click the Enable radio button to use the following denial of service protection: (1)SYN DoS (2)ICMP DoS (3)Per-host DoS protection

SYN Flooding checking: is a well-known Denial Of Service attack on TCP based services. TCP needs a 3-way handshake before the actual communication starts between two hosts. Whenever a new connection request comes in, the server allocates some resources for serving it. A malicious intruder can forge a huge amount of service requests over a very short period, and make your server run out of its resources. When you enable SYN flooding control, filters out such forged service requests while allowing legitimate requests to pass through.

ICMP Redirection checking: is a standard ICMP message, which conveys the better route information to the source. After receiving this message, the recipient updates its routing table with the routing information present in the message. As there is no strong authentication mechanism built into this process, an intruder can make a target update its routing table with the information of his/her interest. By this way an intruder can potentially get access to the data originated from the target host.

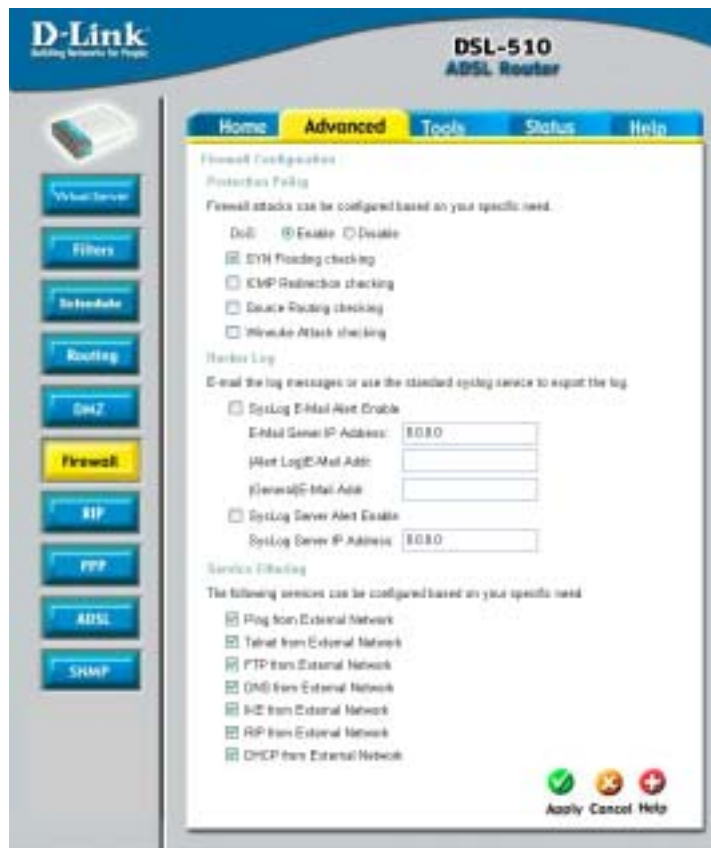
Source Routing checking: With strict and loose source routing, as specified in IP standard RFC 791, one can make data grams take a predefined path towards a destination. By this way, an intruder can gain more information about the corporate network, which he or she can then misuse.

Winnuke Attack checking: Apparently Windows doesn't know how to handle OOB, so it panics and crazy things happen. Windows also sometimes has trouble handling anything on a network at all after an attack like this. A reboot fixes whatever damage this causes.

Hacker Log SysLog: Specifies how attempted violations of the firewall settings will be tracked. Records of such events can be sent via Ethernet to be handled by a system utility Ethernet to (trace) or can e-mailed to specified administrators.

E-mail Address: Specifies the e-mail addresses of the administrators who should receive notices of any attempted firewall violations.

Service Filtering: With this table you can define the transport protocol and used port for the services.



RIP

The RIP Configuration page allows the user to set the configuration for the system wide configuration of RIP. The actual RIP configuration is in the Advanced Configuration.

Advanced > RIP > Basic Configuration

Supplier Interval: This field allows the user to enter the Supplier Interval timer in second. This timer specifies how often RIP sends announcements as a RIP Supplier. (Default=30)

Expire Timeout: This field allows the user to enter the Expire timer in second. This timer specifies the expiration time of a route. When a route has not been updated for more than "expire" period of time, it is removed from the Route Table. This route is invalidated and remains in the enter RIP Route Table. It will be included in the RIP announcements to let other routers know the changes. (Default=180)

Garbage Timeout: This field allows the riser to enter the Garbage timer in second. This timer specifies how long the expired and invalidated routes are kept in the Internal RIP Route Table before it is removed from it. (Default=300)



Advanced > RIP > Advanced Configuration

Interface: This field allows the user to choose the Interface (PVCs, PPP Sessions and LAN), for the RIP to be configured.

Action: This field allows the user to Enable (Yes) or Disable (No) the specified interface for RIP.

Send: This field allows the user to select the Send Mode (RIP Transmit)

Disabled: The supplier transmit is disabled.

V1BC: The supplier transmit in RIPv1 Broadcast.

V2BC: The supplier transmit in RIPv2 Broadcast.

V2MC: The supplier transmit in RIPv2 Multicast.

Receive: This field allows the user to select the Receive Mode (RIP Receive)

V1: The listener receives the RIPv1 only.

V2: The listener receives the RIPv2 only.

V1+V2: The listener receives the both RIPv1 and RIPv2.

Supplier and Listener are based on section 4.1 "Compatibility Switch" in RFC1723.

Current RIP: The field displays the each interface's RIP status.



PPP

PPP is configured as a group of software settings associated with the ADSL port. Although the device has only one physical ADSL port, the Router can be defined with more than one group of PPP settings. Each group of settings is called a PPP interface and is given a name, such as *ppp-0*, *ppp-1*, etc.

Advanced > PPP > PPP Configuration

Session Name: This field allows the user to enter his/her own session Name to distinguish different session for different PPP accounts and different PVCs.

PVC: This field allows the user to choose the specific PVC for PPP session.

MRU: Maximum Receive Unit indicates the peer of PPP connection the maximum size of the PPP information field this device can be received. The default value is 1492 and is used in the beginning of the PPP negotiation. In the normal negotiation, the peer will accept this MRU and will not send packet with information field larger than this value.

MTU: Maximum Transmission Unit indicates the network stack of any packet is larger than this value will be fragmented before the transmission. During the PPP negotiation, the peer of the PPP connection will indicate its MRU and will be accepted. The actual MTU of the PPP connection will indicate its MRU and will be accepted. The actual MTU of the PPP connection will be set to the smaller one of MTU and the peer's MRU. The default is value 1492

MSS: Maximum Segment Size is the largest size of data that TCP will send in a single IP packet. When a connection is established between a LAN client and a host in the WAN connection handshake. The default value is 1432.

Authentication: When AUTO option is chosen, the RAP mode will run first the CHAP.



Advanced > PPP > PPP Account Configuration

User Name: The name you use to log in to your ISP each time this PPP connection is established.

Password: The password you use to log in to your ISP each time this PPP connection is established.



ADSL

The ADSL Configuration page allows the user to set the configuration for ADSL protocols.

Trellis: This field allows the user to enable or disable the Trellis Code. By default, it is always enabled.

Handshake Protocol: This field allows the user to select the ADSL handshake protocol.

Wiring Selection: This field allows the user to enter the wiring selection for RJ-11. Tip/Rip is the default for the board without the inner/outer pair relay.

Bit Swapping: This field allows the user to enable or disable the upstream bit swapping.



SNMP

SNMP (Simple Network Management Protocol) is a widely used network monitoring and control protocol that reports activity on each network device to the administrator of the network. SNMP can be used to monitor traffic and statistics of the DSL-510. The DSL-510 supports SNMP v1, v2.

System Name: The name referencing the virtual service.

System Location : The physical location of this node (e.g., 'telephone closet, 3rd floor').

System Contact : The textual identification of the contact person for this managed node, together with information on how to contact this person.

Get Community: Enter the password **public** in this field to allow "Read only" access to network administration using SNMP. You can view the network, but no configuration is possible with this setting.

Set Community: Enter the password **private** in this field to gain "Read and Write" access to the network using SNMP software. The administrator can configure the network with setting

Trap Receiver: The receiver IP will be receive the SNMP Trap message from the ADSL unit.



Tools

Admin

At this page, the DSL-510 administrator can change the system password. The default value is **510admin**, which has read/write access while.

New Password: Type in the new password.

Confirm Password: Type in the new password a second time for confirmation.



Time

The system time is the time used by the DSL-510 for scheduling services. You can manually set the time or connect to a NTP (Network Time Protocol) server. If an NTP server is set, you will only need to set the time zone. If you manually set the time, you may also set Daylight Saving dates and the system time will automatically adjust on those dates.



System

The current system settings can be saved as a file onto the local hard drive. The saved file or any other saved setting file can be loaded back on the ADSL Router. To reload a system settings file, click on Browse to browse the local hard drive and locate the system file to be used. You may also reset the ADSL Router back to factory settings by clicking on Restore.



Firmware

You can upgrade the firmware of the ADSL Router at this page. Make sure the firmware you want to use is on the local hard drive of the computer. Click on Browse to browse the local hard driver and locate the firmware to be used for the update. Please check the D-Link support site for firmware updates at D-Link Technical support website of your country.



In order to keep pace with changes in ADSL standards and technology the DSL-510 allows you to easily update the embedded firmware. You may obtain the latest version of the DSL-510 firmware by logging onto the D-Link web site at D-Link Technical support website of your country. The Update Firmware window lists the version of the firmware the Router is currently using. If you would like to update, follow the instructions given on the firmware update page to download the new firmware. You can then use the DSL-510 Firmware Upgrade Utility included with the Router to transfer the new firmware to the Router.

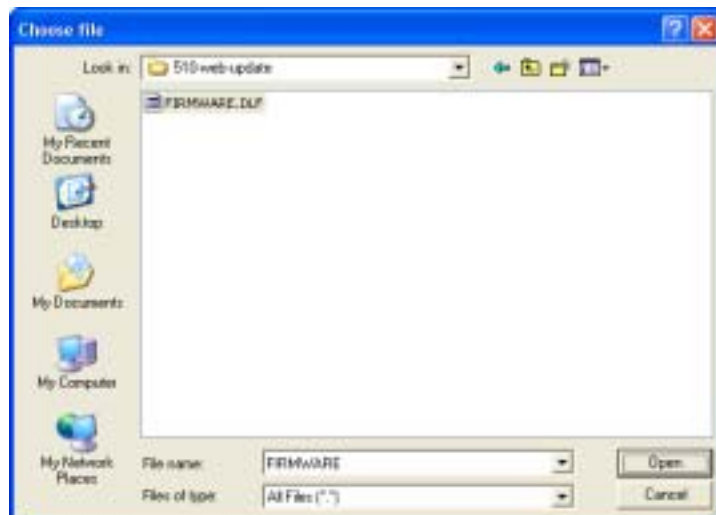
- 1. Click the Next button to start c Code Image Update.



- 2. Click the Browse button to find the file which downloaded the new firmware.



3. Choose the file (FIRMWARE.DLF).



4. Click Apply button.



5. Power Off the ADSL Router about 30 seconds, then Power On.



Misc.

These are additional tools and features of the ADSL Router.

Ping Test: This useful diagnostic utility can be used to check if a computer is on the Internet. It sends ping packets and listens for replies from the specific host.

Connections

IGMP Proxy: Here is the global setting for IGMP Proxy. If it is enabled, then the enabled IGMP Proxy on WAN PVCs will be working. Otherwise, no WAN PVC can have IGMP Proxy working on it.

PPP reconnect on WAN access: If it is enabled, the PPP session will be automatically established when there is a packet wants to go out the WAN.

Save and Reboot: Settings need to be saved to flash and the system needs to be rebooted for changes to take effect.



Diagnostic

This useful diagnostic utility can be used to check if a computer is on the Internet. It sends ping packets and listens for replies from the specific host.



Status

Device Info

This page displays the current information for the ADSL Router. It will display the WAN, LAN, information.

This page allows you to observe the DSL-510 working status:



Log

The ADSL Router keeps a running log of events and activities occurring on the ADSL Router. If the device is rebooted, the logs are automatically cleared. You may save the log files under Log Setting.



Traffic

The ADSL Router keeps a statistic of traffic that passes through it. You are able to view the amount of packets that passes through the ADSL Router on both the WAN port and the LAN port. The traffic counter will reset if the device is rebooted.



ATM

The ATM Status page shows all the statistics information of ATM cells.

Tx Bytes: Total Good Bytes TX's

Rx Bytes: Total Good Bytes Received

Tx Cells: Total Good Cells TX's

Rx Cells: Total Good Cells Received

Rx HEC Errors: Number of cells received with failed checked

Tx Mgmt Cell: Number of mgmt cells TX's

Rx Mgmt Cell: Number of mgmt cells received

Tx CLP0 Cell: Number of cells sent with CLP=0

Rx CLP0 Cell: Number of cells received with CLP=0

Tx CLP1 Cell: Number of cells sent with CLP=1

Rx CLP1 Cell: Number of cells received with CLP=1

Rx Errors: Number of bad frames that Received

Tx Errors: Number of bad frames that TX's

Rx Misrouted Cells: Number of cells received with invalid VPI/CI



TCP

The TCP Status page shows the statistics for all TCP connections.

Total Packets Sent; Data Packets Sent; Data Bytes Sent; Total Packets Received; Packets Received in-sequence; Bytes Received in-sequence; Out of Order Packets; Out of Order Bytes; Packets Disgarded for bad checksum; Packets Disgarded for bad header offset; Packets Disgarded because too short; Connections Initiated; Connections Accepted; Connections Established; Connections closed. The TCP counter will reset if the device is rebooted.



ADSL

Showtime Firmware Version: This field displays the D-Link ADSL data pump firmware version number.

ADSL Line Status: This field displays the ADSL connection process and status.

ADSL Modulation: This field displays the ADSL modulation status for G.dmt or T1.413.

ADSL Annex Mode: This field displays the ADSL annex modes for Annex A or Annex B.

ADSL Startup Attempts: This field displays the ADSL connection attempts after loss of show time.

ADSL Max Tx Power: This field displays the transmit output power level of the CPE.

ADSL CO Vendor: This field displays the Central Office DSLAM vendor name, if available

Elapsed Time: This field displays the time of the modem has been in operation.

SNR Margin: Amount of increased noise that can be tolerated while maintaining the designed BER (bit error rate). The SNR Margin is set by Central Office DSLAM. If the SNR Margin is increased, bit error rate performance will improve, but the data rate will decrease. Conversely, if the SNR Margin is decreased, bit error rate performance will decrease, but the data rate will increase.

Line Attenuation: Attenuation is the decrease in magnitude of the ADSL line signal between the transmitter (Central Office DSLAM) and the receiver (Client ADSL Modem), measured in dB. It is measured by calculating the difference in dB between the signal power level received at the Client ADSL modem and the reference signal power level transmitted from the Central Office DSLAM.

Errored Seconds: The error during Showtime, whenever, a given sec contains CRC error, that second will be declared error second.

Loss of Signal: This field displays the count of event of ADSL signal loss.

Loss of Frame: This field displays the count of event of ADSL frame loss.

CRC Errors: This field displays the number of transmit data frames containing CRC errors.

Data Rate: This field displays the ADSL data rate.

Latency: This field displays the latency modes for fast or interleave.



Appendix A - Technical Specifications

General	
Standards:	ANSI T1.413 issue 2 ITU G.992.1 (G.dmt) ITU G.992.2 (G.lite)
Protocol:	RFC 1483 Multiprotocol Encapsulation over ATM Adaptation Layer 5
Data Transfer Rate:	G.dmt full rate downstream: up to 8Mbps G.dmt full rate upstream: up to 1 Mbps G.lite ADSL downstream: up to 1.5Mbps G.lite ADSL upstream: up to 512Kbps
Media Interface Exchange:	ADSL interface: RJ-11 connector for connection to 26 AWG twisted-pair telephone line LAN interface: RJ45 connection (10/100 Mbps)

Physical and Environmental	
AC inputs:	120 VAC 60Hz 12W
Power Adapter:	9V AC 1A
Operating Temperature:	0° to 70° C
Storage Temperature:	-55° to 125° C
Dimensions:	109mm * 142.8mm * 32.1mm
Weight:	200gm
EMI:	FCC Class B, CE, A -Tick
Safety:	LVD, CB, UL

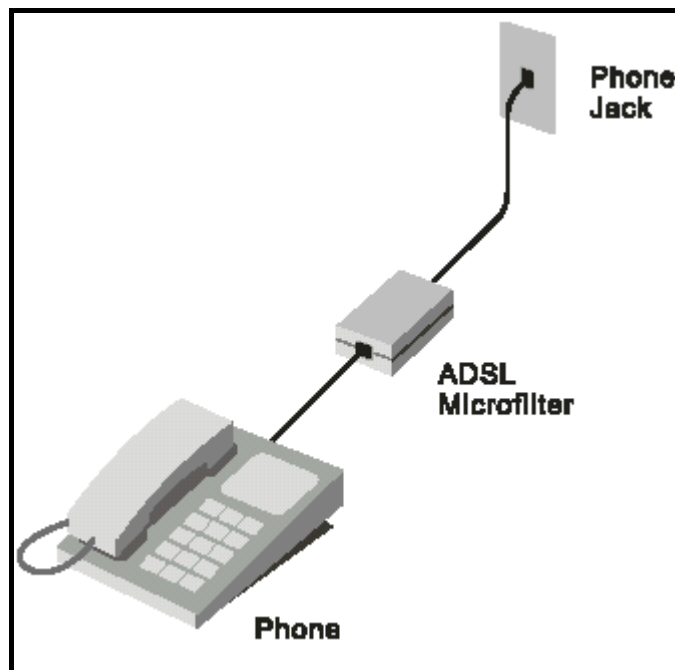
Appendix B – Microfilters and Splitters

Most ADSL clients will be required to install a simple device that prevents the ADSL line from interfering with regular telephone services. These devices are commonly referred to as microfilters or sometimes called (inaccurately) line splitters. They are easy to install and use standard telephone connectors and cable.

For some ADSL clients, a telecommunications technician will be sent to the client's premises to modify the telephone line, usually at the point where the telephone line enters the building. If a technician has divided or split your telephone line into two separate lines - one for regular telephone service and the other for ADSL – then you do not need to use any type of filter device. Follow the instructions given to you by your ADSL service provider, ISP or telephone company about where and how you should connect the Router to the ADSL line.

In-Line Filters

Two common styles of low pass filters are shown in this section, the first is an in-line filter and is illustrated in below. In-line filters are easy-to-install, in-line devices, which attach to the telephone cable between the telephone and wall jack.



In-Line Filter Installation



Note

Do not install the microfilter between the Router and the telephone jack. Microfilters are only intended for use with regular telephones, Fax machines and other regular telephone devices.

Line Splitter

If you are instructed to use a "line splitter", you must install the device between the Router and the phone jack. Use standard telephone cable with standard RJ-11 connectors. The splitter has three RJ-11 ports used to connect to the wall jack, the Router and if desired, a telephone or telephone device.

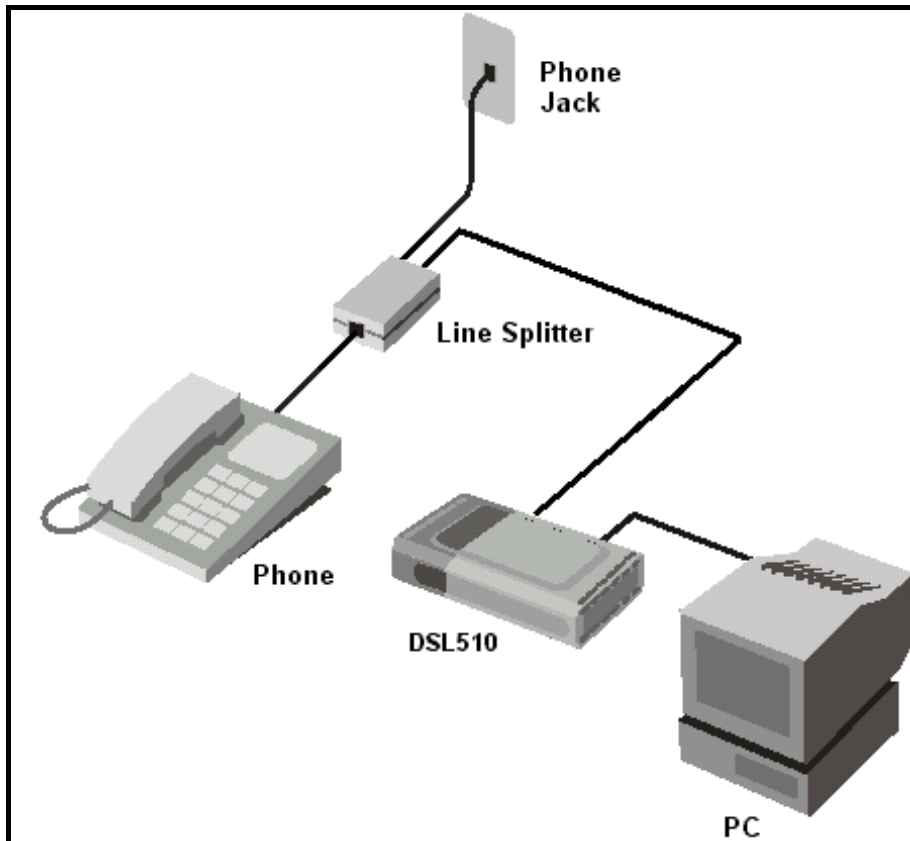
The connection ports are typically labeled as follows:

Line - This port connects to the wall jack.

ADSL - This port connects to the Router.

Phone - This port connects to a telephone or other telephone device.

This diagram illustrates how a line splitter should be installed.



Split Line Filter Installation