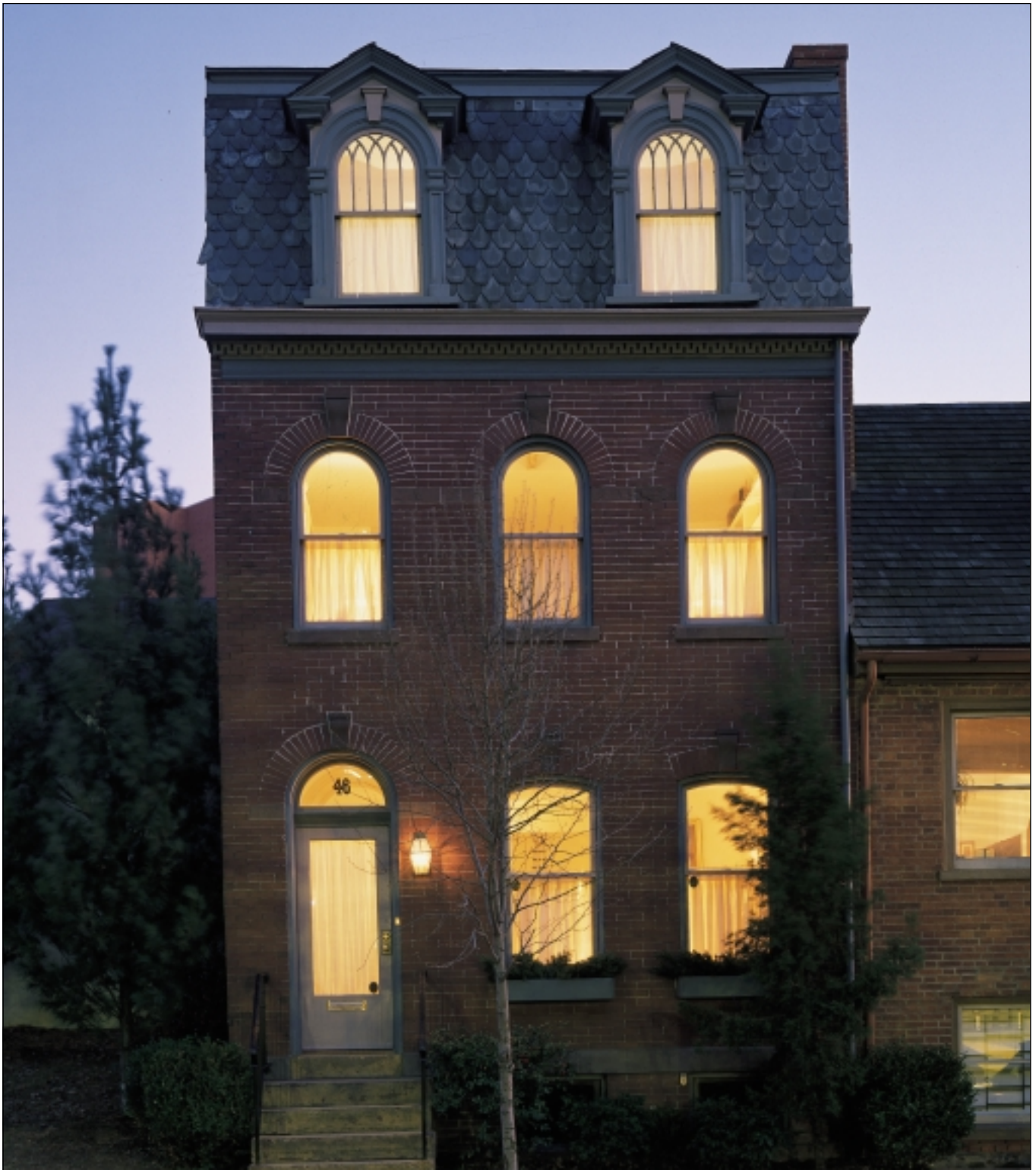


EFFICIENT & ECONOMICAL GAS-FIRED STEAM OR HOT WATER HOME HEATING



INDEPENDENCE®/INDEPENDENCE® PV



BURNHAM INDEPENDENCE SERIES GAS-FIRED STEAM OR HOT WATER BOILER

Long Term Home Comfort and Quality

Burnham's Independence® Series gas-fired boilers offer you all the benefits of hydronic heat with the advantages of quality cast iron construction and advanced engineering. Offered in steam or hot water, the Independence is a quiet, reliable, and efficient boiler.

The Independence natural draft boiler is available in ten sizes, and the power vented steam model is available in four sizes. Your contractor can size the Independence boiler to match the heating requirements of your home for optimum efficiency.

Independence PV — Power Vented Model Available

The Independence PV boiler offers you all the features of steam heat with the flexibility of a power vented boiler. The completely packaged Independence PV boiler installs almost anywhere because **no chimney is required for installation.**

A draft-inducing fan pulls hot gases through the heat exchanger at just the right speed for optimum efficiency. Together, the heat exchanger and fan provide more heat with less fuel consumption. No vent damper is required.

So, if you don't have a chimney or if your old chimney is deteriorated or not up to code, you can install the Independence PV boiler and vent directly outside through the wall.

Quality Construction Made in the USA

Every Burnham boiler is made in the U.S.A. All Burnham heat exchanger castings are produced "in-house" to ensure quality and availability. Burnham is the only boiler manufacturer that can make that claim.



Rugged cast iron sections

Hundreds of heat extracting pins extract the maximum amount of heat, reducing fuel consumption and saving you money.

Steel couplings called nipples

Steel nipples increase the longevity of the boiler by resisting petroleum based chemicals, including antifreeze. These inhibitors can deteriorate the rubber type gaskets which are commonly found in some competitors' boilers.

Lifetime True-Blue limited warranty

Burnham stands behind every Independence boiler with a 10-year limited warranty on the



Burnham Nipple vs. Competitors' Gasket

steam heat exchanger, and a lifetime limited warranty on the water heat exchanger. The additional purchase of Burnham's Winter Warmth Assurance plan extends the True Blue Warranty protection of the heat exchanger to 5 or 10-year blanket coverage. The program pays 100% for parts and labor on qualified repairs for 5 or 10 years from the date of installation. See your Burnham Home Heating Team contractor for more information

Independence Advantages

- With an annual fuel utilization of 83.2%, the Independence gives you excellent value for your dollar.
- A **rear drafthood** (Independence models only) installs in low overhead areas and allows for clearance and flexibility for existing piping.
- Standard on each Burnham Independence Series boiler is a **100% safety shutoff**, a time-proven safety feature with its own backup system.
- A **fuel saving vent damper** (Independence models only) automatically closes the flue to prevent heat from escaping up the chimney after the burner shuts off and reopens it again before the burner comes on.
- The Independence can also be equipped with a **spark-ignited electronic ignition** which improves energy efficiency.

- Burnham uses quality **Honeywell controls** on the Independence and the Independence PV.
- **Industrial quality pressuretrol** for accurate, trouble-free control.
- **Stainless steel burners** equal long life with no rusting like aluminized burners.
- **Step-opening gas valve** enables the boiler to start on low fire and continue on to high fire safely and smoothly providing quiet ignition and long life. The valve is concealed inside the boiler jacket, hidden from

children and safe from accidental bumps and tampering.

- **Power vented model** simplifies installations when a chimney isn't available.

One Source for Total Comfort

Burnham is dedicated to leading the hydronic heating industry through product development and engineering expertise. With years of proven dependability, and the broadest product line, Burnham is the one brand you can rely on for your complete home heating comfort.

Why settle for just a high efficiency Burnham Independence boiler, when you can have a complete Burnham system? Improve upon your new boiler's efficiency with Burnham's complete line of system components including: the Alliance™ family of indirect water heaters, radiant heat pipe and accessories from Burnham Radiant Heating Company, low profile baseboard, modern radiators, and electronic controls. Burnham also offers the industry's most comprehensive technical support available. Now is the time to make Burnham the one source for your total hydronic heating system.

MODEL	'A'	'B'	'C'	'D'	'E'	'F'	'G'
IN3	14-1/2	40	33-3/4	4	40-1/4	4-3/4	7-1/4
IN4	17-3/4	40	34-3/4	5	40-1/4	4-3/4	8-7/8
IN5	21	40	35-3/4	6	40-1/4	5-1/4	10-1/2
IN6	24-1/4	40	35-3/4	6*	40-1/4	5-1/4*	12-1/8*
IN7	27-1/2	40	36-3/4	7	40-1/4	7-1/2	13-3/4
IN8	30-3/4	40	36-3/4	7*	40-1/4	7-1/2*	15-3/8*
IN9	34	40	37-3/4	8	40-1/4	7-1/2	17
IN10	37-1/4	45	38-3/4	8*	45-1/2	7-1/2	18-5/8
IN11	40-1/2	45	38-3/4	9	45-1/2	7-1/2	20-1/4
IN12	43-3/4	45	38-3/4	9	45-1/2	7-1/2	21-7/8
PIN3PV	14-1/2	45	N/A	3	N/A	N/A	4
PIN4PV	17-3/4	45	N/A	3	N/A	N/A	8-1/4
PIN5PV	21	45	N/A	3	N/A	N/A	9-1/4
PIN6PV	24-1/4	45	N/A	3	N/A	N/A	9-1/4

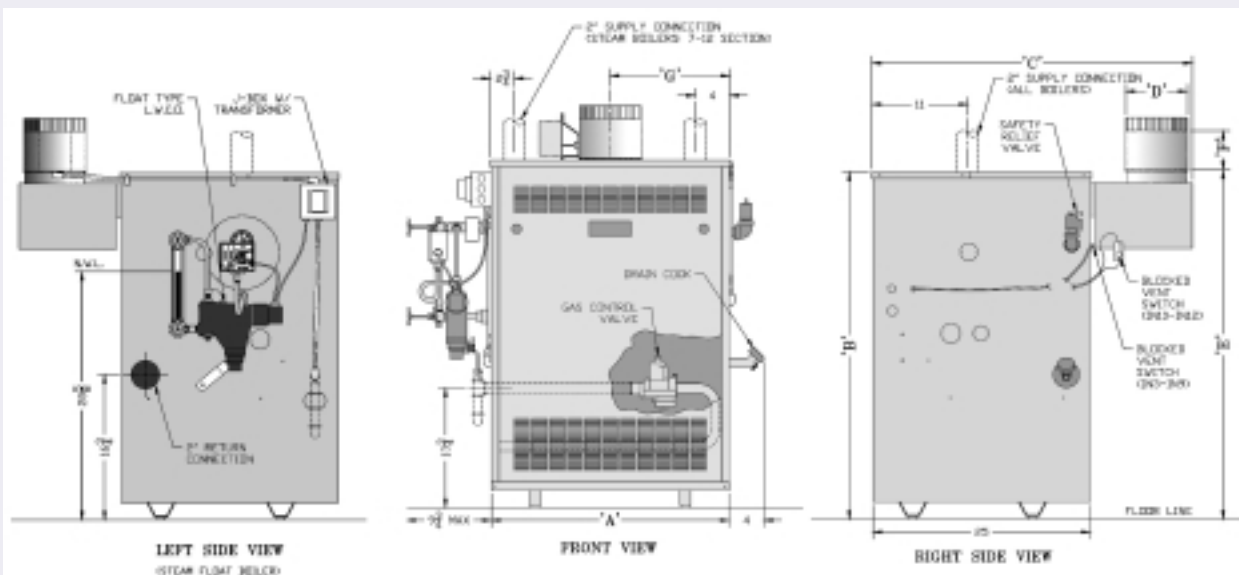
Dimensions (in inches) and Standard Equipment

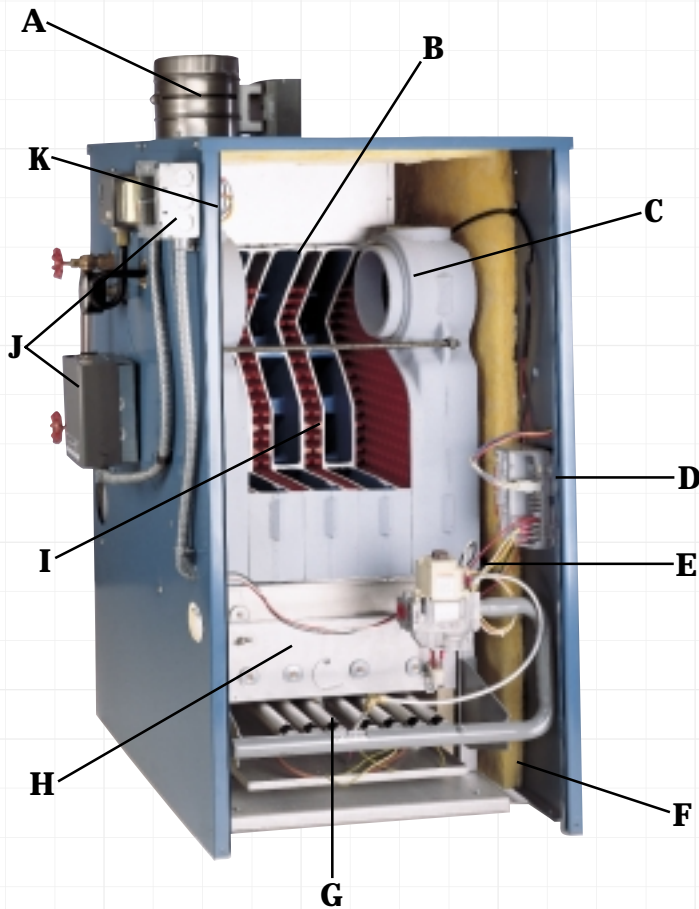
*Dimensions indicated are for USA only - For Canada, use dimension on next larger model.

Standard Equipment:

Rear drafthood (Independence Only)
Cast Iron Sections
Combustible Floor Certified
Stainless Steel Burners
Flame Roll Out Switch (FRS)
Blocked Vent Switch (BVS)
(Independence Only)
Concealed Step Opening Gas Valve
Safety Relief Valve
Pressure Limit Control (Steam)

Low Water Cut Off (Steam)
Steam Pressure Gauge (Steam)
Pressure Temperature Gauge (Water)
Thermostat Isolation Relay
Vent Damper - IN3-IN9 (Independence Only)
2" Supply Tapping
2" Return Tapping
(2) 1-1/4" Indirect Water
Heater Tappings
3" AL29-4C® Stainless Steel Vent
Connector/Terminal (Independence PV Only)





- A. Rear Draft Hood (Independence Only)**
- B. Large Steam Dome**
- C. Cast Iron Nipple**
- D. Deluxe Insulated Jacket**
- E. Step Opening Gas Valve**
- F. Combustible Floor Certified**
- G. Stainless Steel Burners**
- H. Heavy Duty Base Construction**
- I. Cast Iron Sections**
- J. Brand Name Quality Controls**
- K. Built-in Thermostat Isolating Relay**

The Money Saving Solution

Since Burnham's Independence is one of the most efficient boilers you can buy - with an annual efficiency of 83.2% - you can save hundreds of dollars during your first heating season. Compare this to 60% efficiency for a typical 20 year old boiler or 50% for a typical 40 year boiler that may have been converted from coal firing. Your local Burnham dealer can test your current unit and tell you at what efficiency it is operating.

For example, say you spend \$1500 on fuel in one year. To figure out what your annual savings would be, simply divide your existing boiler's efficiency rating by that of the Independence boiler. Multiply that amount by \$1500 and you'll find out approximately how much it will cost to operate your new Independence boiler. You can see that much of the heat you're currently paying for is going right up the chimney!*

How to Determine Your Savings

Formula:

Your Current Boiler's Efficiency Rating	X	Your Current Annual Fuel Bill	=	Your Estimated New Fuel Bill
83.2				

Example:

Your present boiler's efficiency is rated at 60% and your annual fuel bill is \$1500.

60	X	\$1,500	=	\$1,081
83.2				

= \$419 Annual Savings

Find out how you can enjoy winter warmth this year, and for many years to come. Burnham is the answer to all your heating needs.

(*Savings will vary based on yearly heating degree days.)



**INDEPENDENCE®
BOILER**

SPECIFICATIONS



INDEPENDENCE® RATINGS

Natural or LP Gas*



BOILER NUMBER	INPUT MBH (1)	DOE HEATING CAPACITY MBH (1)(2)	I=B=R RATING (2)			AFUE				APPROX. SHIPPING WEIGHT (LBS.)	MINIMUM RECOMMENDED CHIMNEY SIZE ROUND Dia. (In.) x Ht.(Ft.) (4) (5)
						24V		EI			
			WATER MBH	STEAM MBH	STEAM SQ. FT.	WATER	STEAM	WATER	STEAM		
IN3 IN4 IN5 IN6 IN7 IN8 IN9 IN10(3) IN11(3) IN12	62	51	44	38	158	81.0	80.0	83.1	81.9	350	4 x 15
	105	87	76	65	271	81.3	80.0	83.1	82.0	420	5 x 15
	140	115	100	86	358	81.6	80.3	83.1	82.0	485	6 x 15
	175	144	125	108	450	81.8	80.6	83.2	82.1	555	6 x 15(5)
	210	173	150	130	542	82.1	80.9	83.2	82.1	620	7 x 15
	245	202	176	152	633	81.1	80.0	83.2	82.2	690	7 x 15(5)
	280	231	201	174	725	81.4	80.3	83.2	82.2	760	8 x 15
	COMBUSTION EFFICIENCY (%)										
	WATER		STEAM								
	315	259.87	226	195	812	83.5		82.5		815	8x15(5)
	349	287.92	250	216	900	83.5		82.5		885	9x15
	385	317.62	276	239	996	83.5		82.5		955	9x15

* LP available on IN3-IN9

1. Ratings shown are for installations at sea level and elevations up to 2,000 ft. For elevations above 2,000 ft., ratings should be reduced at the rate of four percent (4%) for each 1,000 ft. above sea level.
 2. Capacities, outputs and ratings are based on steam combustion efficiency of 82.5%. Water combustion efficiency is 83.5%.
 3. For Canadian builds only: Reduce input and output by 3%.
 4. 15 ft. height is measured from top of drafthood to top of chimney.
 5. IN6, IN8, & IN10 - Canada only: Increase chimney diameter by 1".
- Working Pressure: 15 PSI Steam; 30 PSI Water

ORDERING INFORMATION

The Independence is available as:

- Packaged - Use prefix PIN (Sizes PIN3-PIN7)
- Semi-packaged - Use prefix SIN (Sizes IN3-IN9)
- Knocked-down - Use prefix KIN (Sizes KIN3-KIN12)

INDEPENDENCE® PV RATINGS

Natural Gas Packaged Only



BOILER NUMBER	INPUT MBH	DOE HEATING CAPACITY MBH (1)	I=B=R NET RATINGS		MAXIMUM VENT LENGTH EQUIVALENT FT. (2) (3)	AFUE%	APPROX. SHIPPING WEIGHT (LBS.)
			STEAM MBH	STEAM SQ. FT.			
PIN3PV	62	52	39	163	45	83.2	355
PIN4PV	105	87	65	271	35	82.2	425
PIN5PV	140	116	87	363	35	82.2	490
PIN6PV	175	145	109	454	35	82.2	560

1. Capacities and ratings are based on steam combustion efficiency of 83.0%. (84.1% for PIN3PV)
 2. The approved venting system for the Independence PV is 3" AL29-4C® stainless steel. Do not substitute other materials.
 3. Vent pipe length is listed in equivalent feet. Any elbows or tees used have specific values which must be subtracted from the total length to determine maximum length of straight pipe. Consult Installation, Operating and Service Instructions for details.
- Steam only - 15 PSI Working Pressure



Form No. PL81401101000d-02/03-15Ms
Printed in the U.S.A.
©2003 U.S. Boiler Co., Inc. - Lancaster, PA
Phone: 717-397-4701
www.burnham.com