

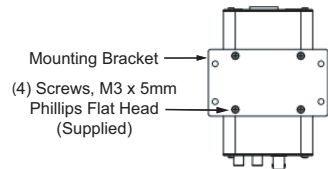
CEN-NVS100

Network Video Streamer

1 Installing the CEN-NVS100

MOUNTING

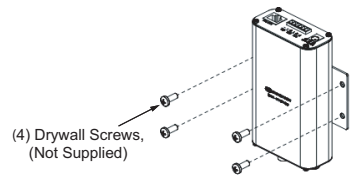
A. Attach the Supplied Mounting Bracket.



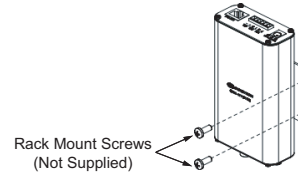
B. Mount the CEN-NVS100 to a Wall or to a Rack.

NOTE: The CEN-NVS100 must be installed in a temperature-controlled environment ranging from 32° to 104° F (0° to 40° C).

Wall Mounting:



Rack Mounting:



Mount the left or right side of the bracket to the front or rear rail of a rack (mounting of right side of bracket is shown).

CONNECTIONS

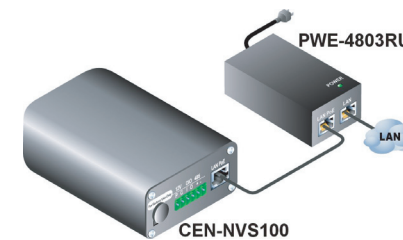
(Front) Video Connection

If necessary, use the supplied BNC-to-RCA adapter to connect to the camera.

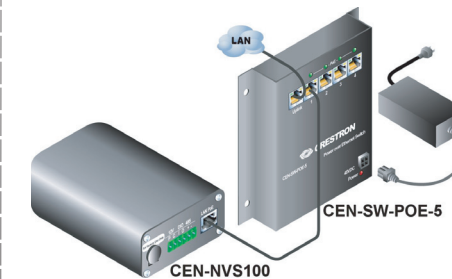


(Rear) Power over Ethernet (PoE) Connection

Connection to Crestron® PoE Injector (Part No. PWE-4803RU)



Connection to Crestron PoE Switch (Part No. CEN-SW-POE-5 Shown)



Connection to Third-Party PoE Power Source. For installation information, refer to the third-party device documentation.

NOTE: By default, the CEN-NVS100 uses DHCP.

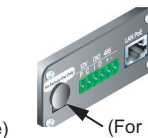
(Rear, Optional) 6-pin Terminal Block Connection

Using the supplied terminal block mating connector, connect the 6-pin terminal block to external devices such as an alarm, sensor, and PTZ camera.



P = (For factory use only)
C = Common
I = Digital Input
O = Digital Output
+ = RS-485, T+/R+
- = RS-485, T-/R-

For Future or Factory Use Only



2 Configuring the CEN-NVS100

A. Access the Configuration Web Pages.

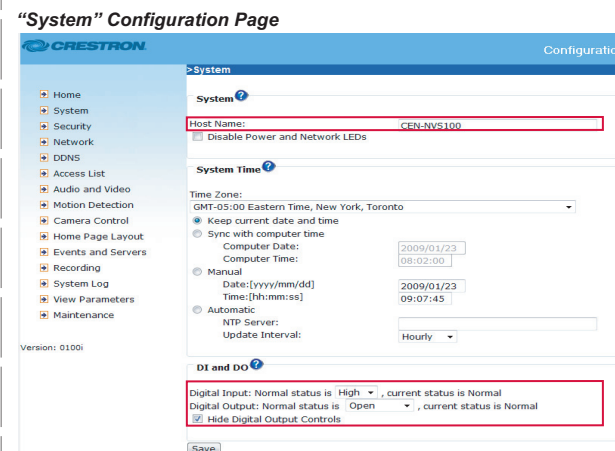
- In the Device Discovery Tool of Crestron Toolbox™, select **Crestron CEN-NVS100**. The home page of the CEN-NVS100 opens.



- Select **Configuration**. The "System" configuration page opens (refer to Step B).

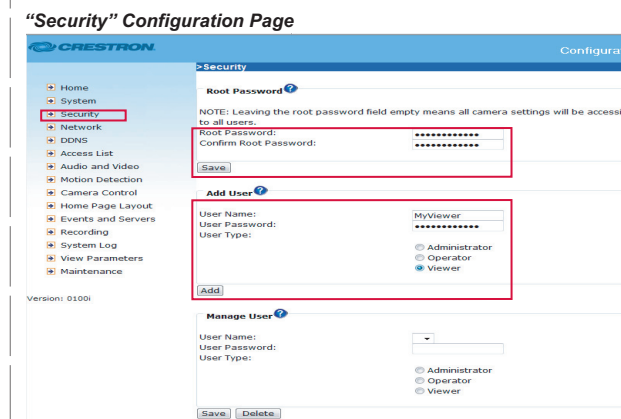
B. (Optional) Configure System Settings.

- On the "System" configuration page, modify the default host name, **CEN-NVS100**, using a name that is meaningful for your environment.
- Configure DI (Digital Input) and DO (Digital Output) settings.
- Click **Save**.



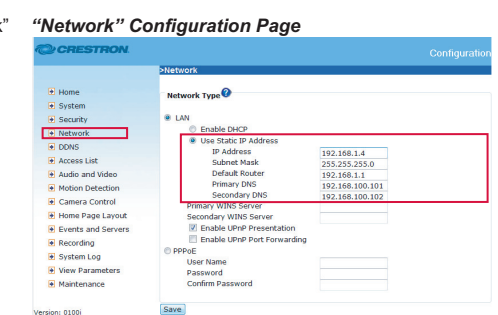
C. Configure Security Settings.

- Click **Security**. The "Security" configuration page opens.
- In the **Root Password** pane, assign an administrator password and then click **Save** at the bottom of the pane. A log-in window appears.
- Enter **root** as the user name, and then enter the password you entered in step 2.
- In the **Add User** pane, create a user account whose user type is set to **Viewer**, and then click **Add**.



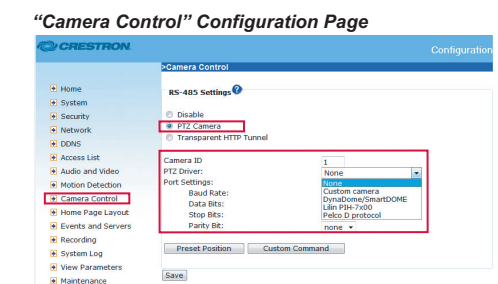
D. Configure Network Settings.

- Click **Network**. The "Network" configuration page opens.
- Configure a static IP address and related network information.
- Click **Save**.



E. (Optional) Configure Camera Control Settings.

- Click **Camera Control**. The "Camera Control" configuration page opens.
- Click **PTZ Camera**, and then configure the camera settings as required.
- Click **Save**.



3 Adding the CEN-NVS100 to Your Crestron System

To add the CEN-NVS100 to your Crestron system, perform the steps in **Option 1** or **Option 2**:

- **Option 1** uses VisionTools® Pro-e (VT Pro-e) programming and provides streaming video capabilities only.
- **Option 2** uses both SIMPL Windows and VT Pro-e programming and provides the following capabilities: streaming video, touchpanel control of PTZ cameras, control system response for digital I/O, motion detection, and video detection.

Option 1: VT Pro-e Programming Only

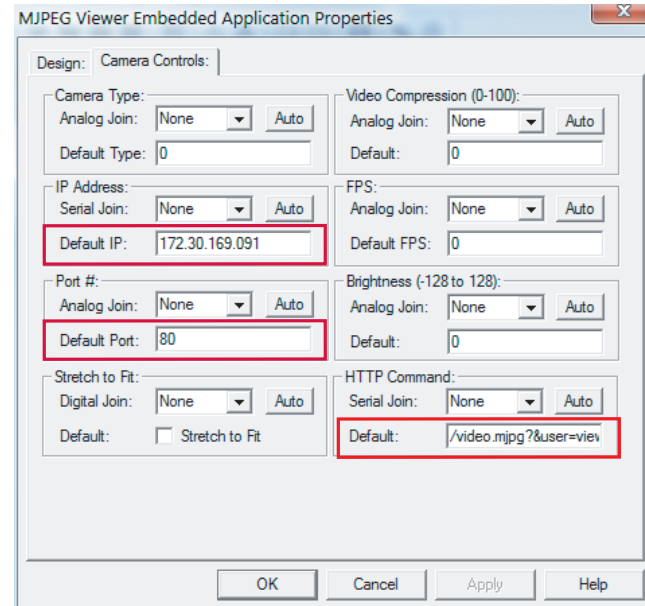
- For the desired touchpanel in the *ProjectView* tab, open the *Embedded Applications* folder and then double-click **MJPEG Viewer** to open the "MJPEG Viewer Embedded Application Properties" window.
- Click the *Camera Controls* tab.
- Enter the IP address, port number, and HTTP command into the appropriate fields, and then click **OK**.

NOTE: For the HTTP command, enter the viewer name and viewer password assigned when creating a **Viewer** user account in section 2, step C4 of this guide. For example, if the viewer name is *MyViewer* and the password is *viewmycamera*, enter the following:

```
/video.mjpg?user=MyViewer&pw=viewmycamera
```

- Save the project.

"MJPEG Viewer Embedded Application Properties" Window

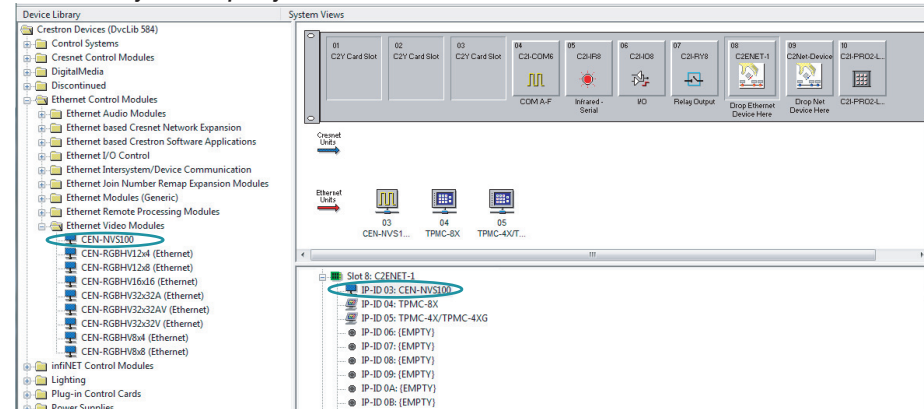


Option 2: SIMPL Windows and VT Pro-e Programming

SIMPL Windows Programming:

- From the *Ethernet Control Modules* | *Ethernet Video Modules* folder of the *Device Library*, drag the CEN-NVS100 into the *System Views*.

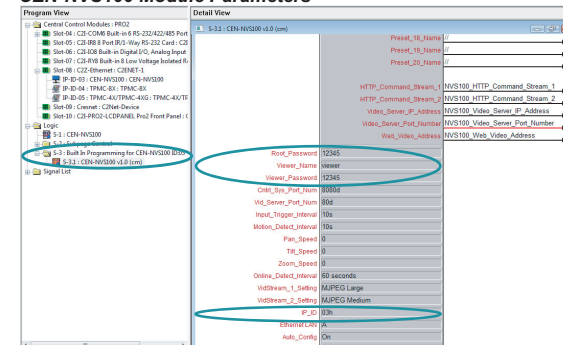
Device Library and Sample System Views



- Double-click the CEN-NVS100 in the system tree to open the "Device Settings" window, and then set the IP address of the CEN-NVS100 (use the IP address set in section 2, step D2). If desired, also change the IP ID of the CEN-NVS100.

- In the *Logic* folder of the *Program View*, select the *Built In Programming for CEN-NVS100* subfolder.

CEN-NVS100 Module Parameters

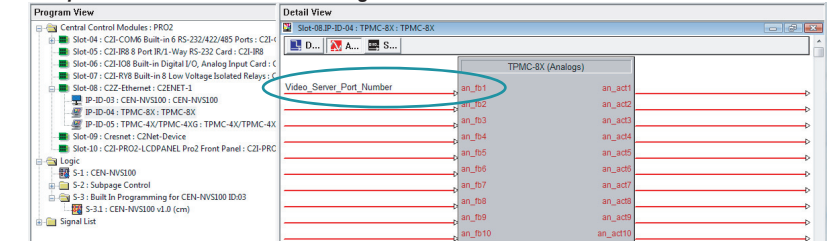


- In the *Detail View*, enter data into the following text boxes:

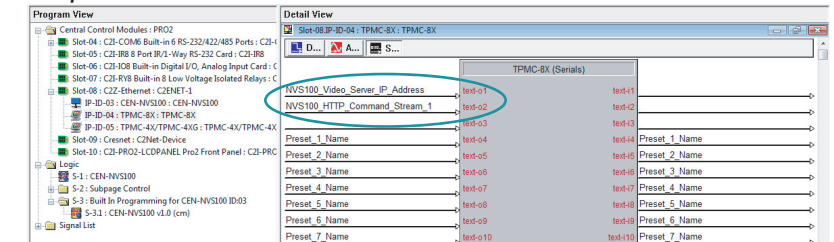
- *Root_Password* (use the root password entered in section 2, step C2)
- *Viewer_Name* (use the name entered in section 2, step C4)
- *Viewer_Password* (use the password entered in section 2, step C4)
- *IP_ID* (use the IP ID assigned to the CEN-NVS100)

- Connect the CEN-NVS100 module outputs (*Video_Server_Port_Number*, *HTTP_Command_Stream_1*, *Video_Server_IP_Address*, and all others required for your application) to the touchpanel definition.

Sample TPMC-8X Port Number Analog Join



Sample TPMC-8X IP Address and HTTP Command Serial Joins



VT Pro-e Programming:

- For the desired touchpanel in the *ProjectView* tab, open the *Embedded Applications* folder and then double-click **MJPEG Viewer** to open the "MJPEG Viewer Embedded Application Properties" window.
- Click the *Camera Controls* tab.
- In the *IP Address*, *Port #*, and *HTTP Command* panes, set the join numbers using the same numbers assigned in step E (above) of the "SIMPL Windows Programming" section, and then click **OK**.
- Save the project.

"MJPEG Viewer Embedded Application Properties" Window

