

# What's Included in the box

- CWR-935M Mobile Mini N Router
- Quick Installation Guide
- Setup Utility & User Manual on CD-ROM
- USB Cable (Optional)
- Battery Pack (Optional)
- Car Charger (Optional)



**CWR-935M**  
Mobile Mini N Router  
with More Power Freedom

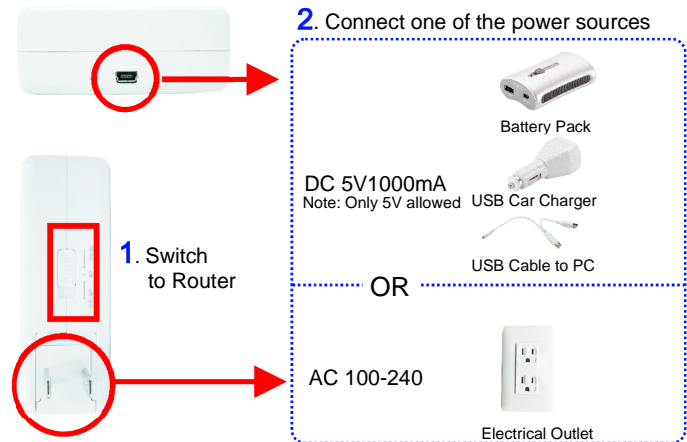
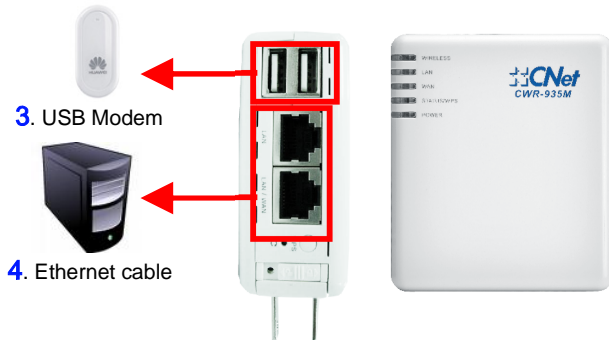


# Quick Installation Guide

## 3.5G Internet Setup

### Step 1: Device Setup

Switch to Router mode. Connect power and insert a USB modem. Insert one end of the Ethernet cable to the LAN port and the other end to your PC.



### Step 2: Install Smart Setup Software

Insert product CD to your PC. At the welcome screen, please click *Utility* to install the *Smart Setup* software. If you do not see the welcome screen, go to *Start>My Computer* and click to open CD-ROM drive. Then double click *autorun.exe* and wait a few seconds for the welcome screen to show up.



### Step 3: Launch Smart Setup

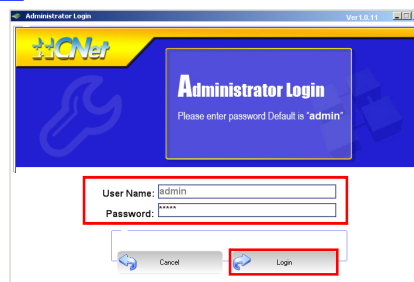
*Smart Setup* can be launched from *Start>Programs>CNet>Smart Setup>Smart Setup* or the desktop icon. At *Server Router* page, click *Function Setup* button.



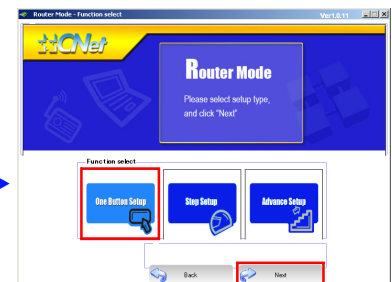
### Step 4: Function Setup



Double click "CWR-935M" to login the device. If utility can't find the device, please click 'Rescan' to scan



Enter default user ID "admin" & password "admin" to login.

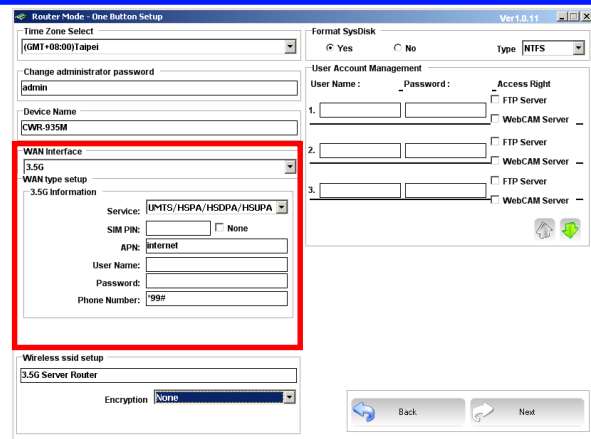


Click 'One Button Setup' then click 'Next'

## Step 5: Connect to the Internet

Select '3.5G' in WAN interface drop-down menu. Fill in information provided by your 3G service provider. Click 'Next' button to finish setup process. The router will restarted shortly and once the Information page pops up. You are ready to surf the Internet!

Note: In most cases, APN & Phone Number are required. User Name & Password can be optional. The common APN name is *internet* and the phone number is \*99#.



## USB Modem Does Not Work With the Router

If your USB modem is not working with the router. Check the support list to ensure you are using a supported device. CNet's supported device list changes regularly. We update our supported device list after a device is approved. If the device you have is not on the list, that means we do not support it at this time. The supported device list can be found at: <http://www.cnet.com.tw/product/cwr-935m.html>

If you are still unable to access the Internet after following above instructions. Please consult the User Manual or contact CNet Technical Support for further assistance.

## Technical Information

### LED Status Lights

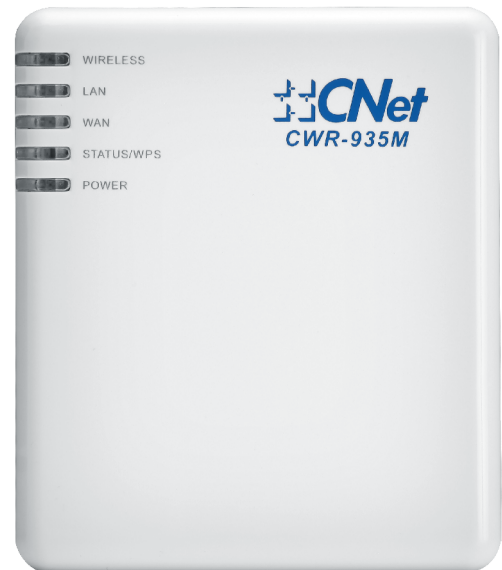
**WIRELESS** Signifies that the WiFi radio of the router is "On". Blinking indicates traffic.

**LAN** Signifies that connection is made on LAN port. Blinking indicates traffic.

**WAN** Signifies that connection is made on WAN port. Blinking indicates traffic.

**STATUS/WPS** Blinking Green light indicates Reset or Firmware updates is in progress. Blinking Orange light indicates the router goes into "WiFi Protected Setup" mode.

**POWER** Signifies the router has power



## How to Set up Broadband Internet Service (xDSL, Cable modem...) & Other Functions

In the User Manual on product CD, You can find detail steps of:

- Setting up Broadband Internet Service such as xDSL, Cable modem, WiFi ISP
- Instructions on how to set up server functions such as WebCam server, Printer server, Samba server, FTP server
- Configuring AP mode / WiFi AP mode for different network needs

For additional information, please visit the product website: <http://www.cnet.com.tw/product/cwr-935m.html>

