



Cisco Connect

Linksys E4200 | Maximum Performance Wireless-N Router



Contents

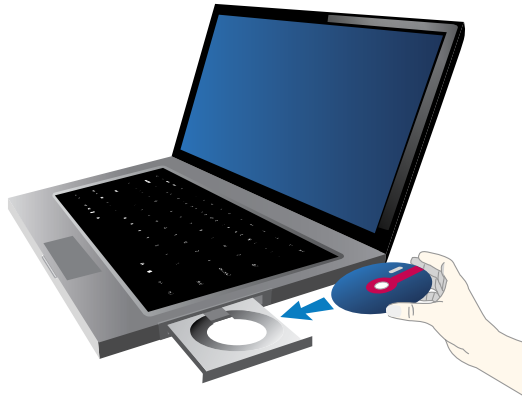
Chapter 1: Installation	1
Installation	1
Chapter 2: How to Use Cisco Connect	3
How to Access Cisco Connect	3
Main Menu	3
Computers and Other Devices	4
Parental Controls	6
Router Settings	9
How to Exit Cisco Connect	11

Chapter 1: Installation

To install Cisco Connect on your computer, run the setup software on the CD. Then follow these instructions.

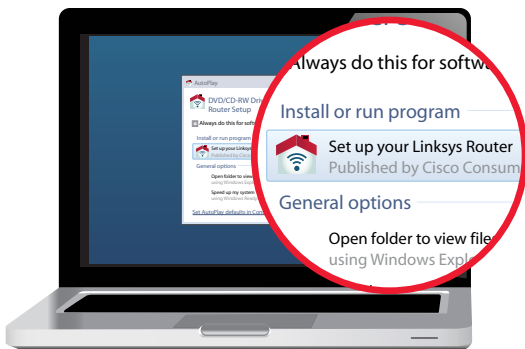
Installation

1. Insert the CD into your CD-ROM drive.



Insert CD

2. Click **Set up your Linksys Router**.



Set Up Your Linksys Router

If you do not see this, access the setup software on the CD directly. To do so, perform the following steps for your specific operating system:

Windows 7

- a. Go to **Start > Computer**.
- b. Double-click your CD-ROM drive.

Windows Vista

- c. Go to **Start > Computer**.
- d. Double-click your CD-ROM drive.

Windows XP

- a. Go to **Start > My Computer** and select your CD-ROM drive.
- b. Double-click **Setup.exe**.

Mac OS X

- a. Double-click the CD on your desktop.
 - b. Double-click **Setup**.
3. To read the License Terms, click **I have read and accept the License Terms for using this software**. To accept the agreement and continue with the installation, select **I have read and accept the License Terms for using this software**. Click **Next**.



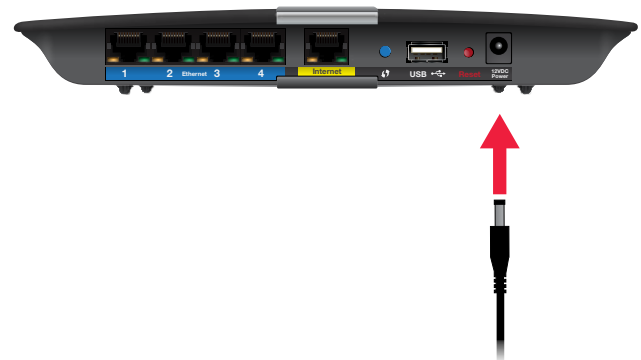
License Agreement

4. The connection steps are displayed.



Connection Overview

- a. Connect the power cord to the Power port on the back of the router.



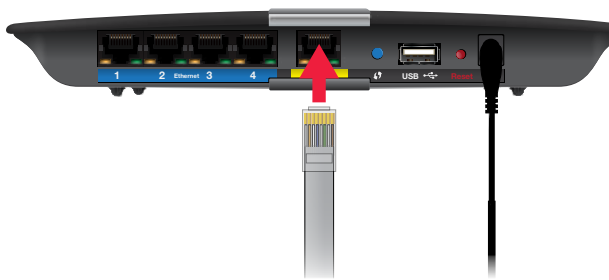
Connect to Power Port

b. Connect the power adapter to an electrical outlet.



Connect to Electrical Outlet

c. Connect one end of an Ethernet cable to the yellow port labeled **Internet** on the back of the router. Connect the other end of the Ethernet cable to your broadband modem or existing router/gateway. Click **Next**.



Connect Ethernet Cable



NOTE: To view detailed connection steps, click [Show me how](#) in the setup software.

5. Please wait while the setup software is setting up the router.



Setting Up the Router

6. The router name and password are displayed. (The router name is the name of your wireless network, which is also known as an SSID, Service Set Identifier.) You can change them later in Cisco Connect. Click **Next**.



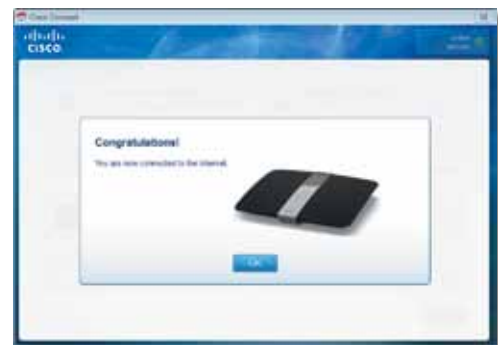
Linksys Router Settings

7. Please wait while the setup software is finishing the setup.



Finishing the Setup

8. The installation is complete. Click **OK**.



Installation is Complete

After installation, Cisco Connect starts automatically. For information on using Cisco Connect to manage the router and your network, go to **“How to Use Cisco Connect”** on page 3.

Chapter 2: How to Use Cisco Connect

Cisco Connect provides an easy way to manage your router and network. You can connect computers or devices to your router, give Internet access to guests in your home, and change the router's settings.



NOTE: A group of computers or other devices connected to a router is a local network. The router allows these devices to communicate.

How to Access Cisco Connect

Windows

Go to **Start > All Programs > Cisco Connect.**

Mac

Go to **Go > Applications > Cisco Connect.**

Main Menu

When Cisco Connect starts up, the main menu appears and offers four options: Computers and Devices, Parental Controls, Guest Access, and Router Settings.



Main Menu

Status information is displayed in the upper right corner:

- online secure
Your local network is secure, and your Internet connection is available.
- offline secure
Your local network is secure; however, your Internet connection is not available. To repair your Internet connection, follow the on-screen instructions.



NOTE: For more information, click **Need help?**

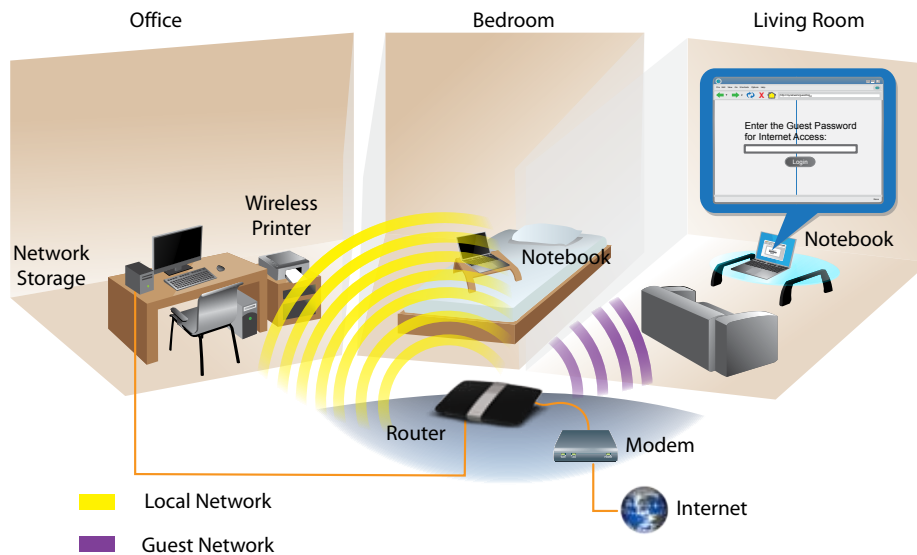
Local Access versus Guest Access

You can connect computers or devices to your router by giving them local access (Computers and Devices option) or guest access (Guest Access option).

Computers and devices with local access have access to the Internet and to other devices on your local network, including shared computers and printers connected to the router. Local access can be given to a wired or wireless device. Refer to "**Computers and Other Devices**" on page 4 for more information.

Guest access gives Internet access to guests in your home but does not let them access your computers or personal data. You provide the guest network name and password, and your guests will use them to wirelessly connect to your router. Refer to "**Main Menu – Guest Access**" on page 4 and "**Guest Access**" on page 8 for more information.

For example, in the diagram ("**Local Access and Guest Access Diagram**" on page 3), the local network includes the wired network and the local wireless network, which is represented by yellow waves between the router and the wireless printer in the office and the notebook in the bedroom. The Guest Access feature is represented by the purple waves between the router and the notebook in the living room.



Local Access and Guest Access Diagram

Main Menu – Computers and Devices

Use this option to connect another computer or device to the router.

There are x device(s) connected to your router The number of devices connected to the router is displayed.

Add device To connect another computer or device to the router, click **Add device** and go to **“Computers and Other Devices”** on page 4.

Main Menu – Parental Controls

Parental controls restrict Internet access for up to five computers. For the computers you select, you can block or limit Internet access to specific times. You can also block specific websites.

Parental controls restrictions are being applied to x device(s) The number of devices with Parental Controls restrictions is displayed.

Change To enable parental controls or change settings, click **Change** and go to **“Parental Controls”** on page 6.

Main Menu – Guest Access

Guest Access provides Internet access only; it does not provide access to the local network and its resources. For example, the guest computer cannot print to a printer on the local network or copy files to a computer on the local network.

Guest Access helps minimize exposure of your local network. To give Internet access to friends or family, provide the guest network name and password displayed on this screen.

Guests can connect to x-guest using the password xyz When a guest wants Internet access in your home, have the guest do the following:

1. Connect to the wireless guest network, which is the name of your wireless network followed by **-guest**.
2. Open a web browser.
3. On the login screen, enter the password of your guest network. Then click **Login**.

Change To disable Guest Access or change settings, click **Change** and go to **“Guest Access”** on page 8.

Main Menu – Router Settings

Use this option to personalize the router’s settings.

Router name is x The name of the router is displayed.

Change To change settings, click **Change** and go to **“Router Settings”** on page 9.

Computers and Other Devices

The *Computers and other devices* screen appears.



Computers and Other Devices

Computer Click this option to connect another computer in your home. Go to **“Computer”** on page 4.

Wireless printer Click this option to connect a wireless printer. Go to **“Wireless Printer”** on page 6.

Other devices Click this option to connect a device that is not a computer, such as a smartphone or game console. Go to **“Connect Manually”** on page 6.

Computer

You can use a USB flash drive to create an Easy Setup Key, which holds the wireless settings for the router. Then you can use the Easy Setup Key to connect additional computers to the router. Select the appropriate option:

- **Yes, I have an Easy Setup Key** If you already have an Easy Setup Key, select this option. Click **Next** and go to **“Connect with the Easy Setup Key”** on page 5.
- **No, I don’t have an Easy Setup Key — create a new one now** If you want to create or update an Easy Setup Key, select this option. Click **Next** and go to **“Create or Update the Easy Setup Key”** on page 5.
- **I want to connect manually using my wireless settings** If you want to connect manually (without an Easy Setup Key), select this option. Click **Next** and go to **“Connect Manually”** on page 6.



Do You Have an Easy Setup Key?

Connect with the Easy Setup Key

1. Insert the Easy Setup Key into an available USB port on the computer that you want to connect to the router.



Connecting Another Computer

2. On that computer, click **Connect to your Linksys router**. (If you do not see this, access the Easy Setup Key through Windows Explorer or the Finder, and double-click **Connect**.)

Follow the on-screen instructions to connect that computer to the router.

3. Come back to this computer. On the *Connecting another computer* screen, click **Next**.
4. Enter a name that will be used to identify the newly added computer. Then click **Finish**.



Name Your Device

Create or Update the Easy Setup Key

If you do not have an Easy Setup Key, you can create one using a USB flash drive.

If you already have an Easy Setup Key, you can update it with the router's current settings.

1. Insert the Easy Setup Key or a USB flash drive into an available USB port on your computer.



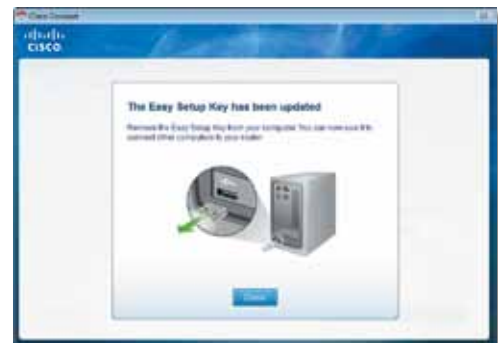
Update or Create an Easy Setup Key

2. Please wait while settings are copied to the Easy Setup Key. This may take a few minutes.



Copying Files to the Easy Setup Key

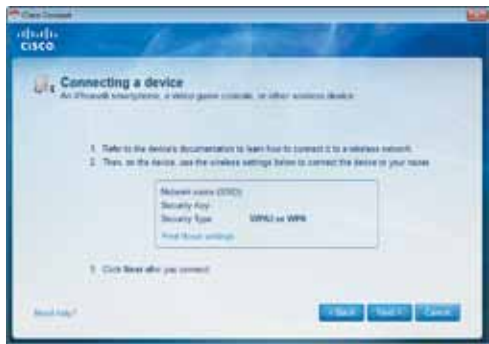
3. Remove the Easy Setup Key. You can now use it to connect other computers to the router (for more information, refer to **“Connect with the Easy Setup Key”** on page 5). Click **Close**.



Easy Setup Key Has Been Updated

Connect Manually

1. Enter the *Network Name (SSID)*, *Security Key*, and *Security Type* settings on your wireless device. To print this information, click **Print these settings**.



Connecting a Device

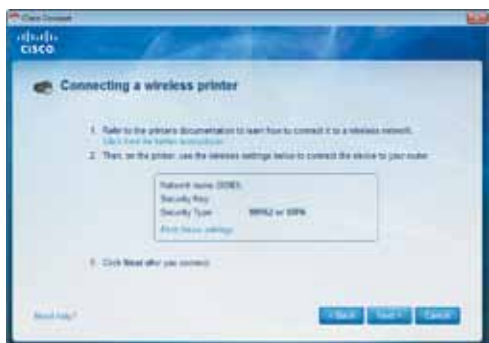
2. After your device connects, click **Next**.
3. Enter a name that will be used to identify this device. Then click **Finish**.



Name Your Device

Wireless Printer

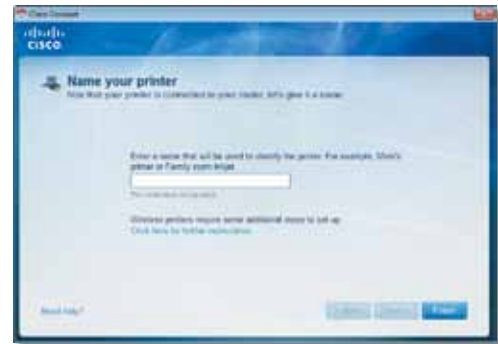
1. Refer to your printer's documentation to learn how to connect it to a wireless network.
2. Enter the *Network Name (SSID)*, *Security Key*, and *Security Type* settings on your wireless printer. To print this information, click **Print these settings**.



Connecting a Wireless Printer

3. Wait until your printer connects. On the *Connecting a wireless printer* screen, click **Next**.

4. Enter a name that will be used to identify this printer. Then click **Finish**.



Name Your Printer

Parental Controls

If you are using Parental Controls for the first time, you are asked to create a Parental Controls password. This password helps ensure that only authorized users can access Parental Controls. For information on creating the password, refer to "**First-Time Use of Parental Controls**" on page 7.

If you have already created a Parental Controls password, the *Enter the Parental Controls password* screen appears.



Enter the Parental Controls Password

Enter the Parental Controls password and click **OK**. (If you forgot the password, click **I forgot my password** and enter the answer to your secret question. Then enter a new password, verify it, and click **OK**.)

The *Parental controls* main screen appears.



Parental Controls

The screen provides the following options:

Restrict Internet access on This lists the computers that have Parental Controls enabled. To add, remove, or rename computers on this list, refer to “**Restrict Internet Access List**” on page 7. To set up Parental Controls on a specific computer on this list, refer to “**Set Up Parental Controls**” on page 8.

Change parental controls password Click this option to change the password that protects access to Parental Controls. Refer to “**Change Parental Controls Password**” on page 8.

First-Time Use of Parental Controls

The first time you use Parental Controls, the *Parental Controls Password* screen appears.



Parental Controls Password

Complete the following:

- **Parental controls password** This password protects access to parental controls. Enter a password of 4-32 characters.
- **Verify password** Re-enter the password.
- **Secret question** Enter a question whose answer is known by you but cannot be easily guessed by others. If you forget the Parental Controls password, you can reset it by correctly answering your secret question.
- **Answer** Enter the answer to your secret question.

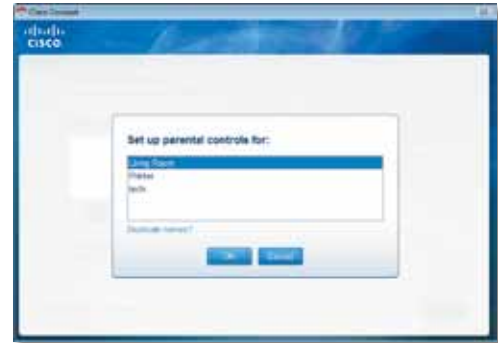
Click **OK** to save your settings.

Restrict Internet Access List



Parental Controls

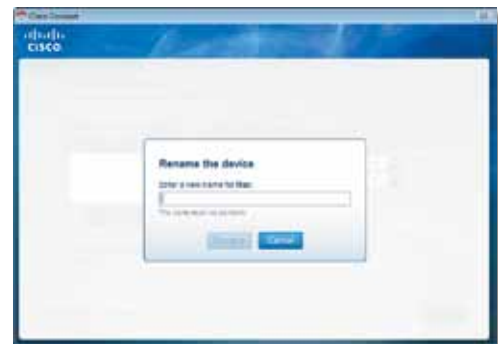
Add To apply parental controls to a computer that is not in the list, click **Add**, and the *Set up parental controls for* screen appears. Select the computer and click **OK**.



Set Up Parental Controls For

Remove If a computer should not have Parental Controls applied to it, select the computer and click **Remove**.

Rename To give a computer a new name, select the computer and click **Rename**, and the *Rename the device* screen appears. Enter the new name. Then click **Rename**.



Rename the Device

Set Up Parental Controls

To set up Parental Controls for a computer, follow these instructions:

1. Select the computer from the *Restrict Internet access on* list. (If the computer is not listed, click **Add** to select it.)



Parental Controls

2. In the *Block Internet access* section, specify when the computer's Internet access will be blocked:
 - **Always** To block Internet access at all times, select this option.
 - **Specific times** To block Internet access only during specific times of the day, select this option and set the schedule:
 - **School nights** Select the appropriate start and end times.
 - **Weekends** Select the appropriate start and end times.
 - **Never** To never block Internet access, keep the default, **Never**.
3. In the *Block specific sites* option, click **Edit** to create a list of websites you want to block. The default is **None**. The *Block these sites* screen appears.



Block These Sites

- a. On a blank line, enter a website address that you want to block.
For example, to block `http://www.example.com`, enter **example.com** on a line.

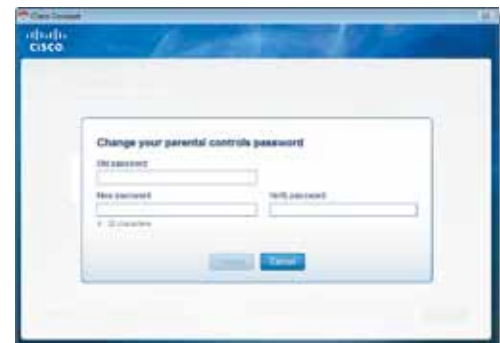
- b. Click **Save** to save your blocked sites and return to the *Parental Controls* screen.
4. On the *Parental controls* screen, click **Finish** to save your settings.



NOTE: Repeat steps 1-4 to set up parental controls for different computers.

Change Parental Controls Password

If you clicked **Change parental controls password**, the *Change your parental controls password* screen appears.



Change Your Parental Controls Password

- **Old password** Enter the old password.
- **New password** Enter a new password of 4-32 characters.
- **Verify password** Re-enter the new password.

Click **Change** to save your setting.

Guest Access

The *Guest access settings* screen appears.

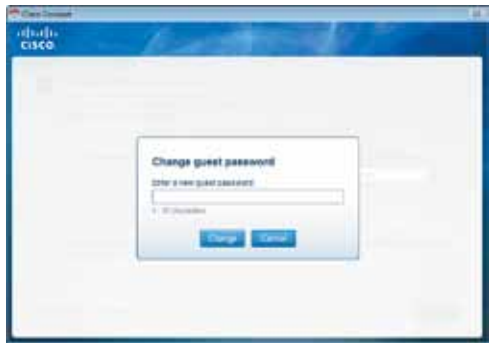


Guest Access Settings

Allow guest access By default, guest access is enabled. To disable guest access, select **no**.

Guest network name By default, the setup software sets up the name of the guest network.

Password By default, the setup software assigns the password for the guest network. To change the password, click **Change**, and the *Change guest password* screen appears.



Change Guest Password

- **Enter a new guest password** Enter a password of 4-32 characters.
- Click **Change** to save your setting.

Total guests allowed By default, **5** guests are allowed Internet access through the guest network. Select the appropriate number of guests allowed on your guest network; you can select up to 10 guests.

Click **Finish** to save your settings.

Router Settings

The *Router settings* screen appears.



Router Settings

Personalize

Router name The name of the router is displayed (this is also the name of your wireless network). To change the name, click **Change** and go to **“Change Router Name or Password”** on page 9.

Password The password that protects access to the router’s settings is displayed (this also protects wireless access to your local network). To change the password, click **Change** and go to **“Change Router Name or Password”** on page 9.

Rear Port Lights

on/off To allow the lights on the router’s back panel to turn on, keep the default, **on**.

Easy Setup Key

Update or create key The Easy Setup Key is a USB flash drive that holds the wireless settings for the router. If you want to create or update an Easy Setup Key, click this option and go to **“Create or Update the Easy Setup Key”** on page 5.

Internet Speed

Launch Test You can use the Internet speed test to determine your ISP’s current download and upload speeds. Connection speed depends on many factors, and may change throughout the day. To run the speed test, click this option and go to **“Speed Test”** on page 10.

Other Options

Register now to receive special offers and updates To sign up to receive special offers and updates from Cisco and Cisco partners, click this option.

Router details To view more information about the router, click this option and go to **“Router Details”** on page 10.

Advanced settings To access settings for advanced users, click this option and go to **“Advanced Settings”** on page 11.

Click **Finish** to save your settings.

Change Router Name or Password



NOTE: When you change the router name or password, the name or password of your wireless network also changes, and the router is reset. ALL computers and devices connected to your router will momentarily lose their Internet connection. Wired computers and devices will reconnect automatically; however, you will need to reconnect all wireless computers and devices using the wireless network’s new name or password. For more information, refer to **“Computers and Other Devices”** on page 4.

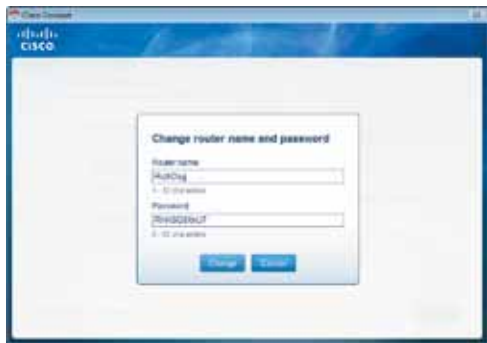
If you clicked **Change**, the *Changing router name or password* screen appears.

1. To change the router name or password, click **Yes**. Otherwise, click **No**.



Changing Router Name or Password

2. Complete the following:
 - **Router name** Enter a name of 1-32 characters.
 - **Password** Enter a password of 8-63 characters.
 - Click **Change** to save your settings.



Change Router Name and Password

Speed Test

The *Internet Speed Test* information screen appears.



Internet Speed Test

1. Click **Next**. The *Internet Speed Test* screen appears.



Internet Speed Test

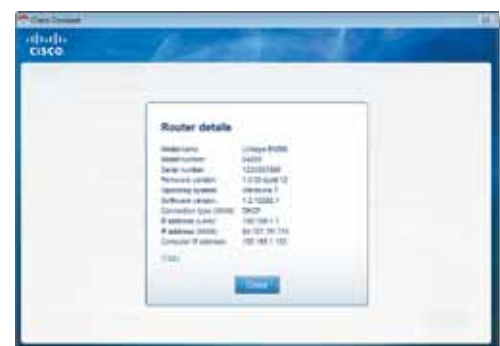
2. Click **Begin Test**. After several seconds, your ISP's download (data receive) speed and upload (data send) speed appear.
3. Click **Finish** to close the screen.

Personalize

Router name The name of the router is displayed (this is also the name of your wireless network). To change the name, click **Change** and go to **"Change Router Name or Password"** on page 9.

Router Details

The *Router details* screen appears, displaying the Model name, Model number, Serial number, Firmware version, Operating system, Software version, Connection type (WAN), IP address (LAN), IP address (WAN), and Computer IP address. (WAN stands for Wide Area Network, such as the Internet. IP stands for Internet Protocol. LAN stands for Local Area Network.)



Router Details

Copy To copy the details to a text file, click **Copy** and follow these instructions:

1. Open a text editor, such as Microsoft Word or Notepad.
2. Go to **Edit > Paste**.
3. Go to **File > Save As**.
4. The *Save As* window displays default values for the file name, file type, and location. Make any changes as needed. Then click **Save**.

5. Click **Close** to return to the *Router settings* screen.

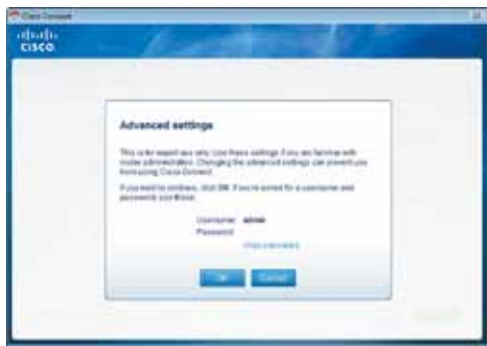
Advanced Settings

If you are an advanced user familiar with router administration, you can use the browser-based utility to manage the router's advanced settings. The *Advanced settings* screen displays the information needed to log into this utility.

Username Enter this username in the browser-based utility's login screen.

Password Enter this password in the browser-based utility's login screen.

Copy password To copy the password to the Clipboard, click this option.



Advanced Settings

Click **OK** to open the web browser and access the browser-based utility. For more information on the browser-based utility, refer to your router's User Guide.

How to Exit Cisco Connect

To exit Cisco Connect, click **Close** on the main menu.



Main Menu



www.linksys.com/support

Cisco, the Cisco Logo, and Linksys are trademarks or registered trademarks of Cisco and/or its affiliates in the U.S. and other countries. A listing of Cisco's trademarks can be found at www.cisco.com/go/trademarks. Third-party trademarks mentioned are the property of their respective owners. The use of the word partner does not imply a partnership relationship between Cisco and any other company.

© 2011 Cisco and/or its affiliates. All rights reserved.