

Quick Setup Guide

LinkStation HD-HLAN Series



BUFFALOTM

Unpacking and Setup

Open the shipping carton of LinkStation and carefully unpack its contents. The carton should contain the following items:

▶ Main unit (LinkStation)	1
▶ LinkStation Base Plate	1
▶ Base Rubber Feet	4
▶ Ethernet Cable	1
▶ LinkNavigator Installation CD	1
▶ Quick Setup Guide (this user's guide)	1
▶ Warranty card	1

If any items are missing or damaged, please contact the reseller or retailer from which the product was purchased.

The front face of the LinkStation has a protective plastic film covering for protection from scratching during assembly and shipping. The film can be removed by peeling it away from any corner of the front face.

Step 1: Connect your Cables

- ▶ Plug LinkStation's power cord into a power outlet. Then, connect the included Ethernet Cable into the Ethernet port on the back of LinkStation.



- ▶ Connect the other end of the included Ethernet Cable into a hub, switch, or router on the network, or connect it directly to a nearby running PC. Connecting directly to a PC is not recommended, as many features, including DHCP, will not function in this configuration.

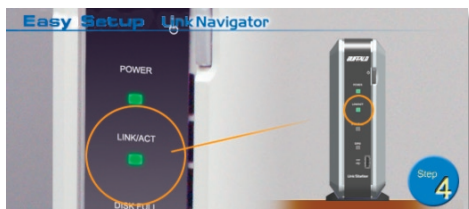


- ▶ Press the power button on the front of LinkStation to turn it on.



Step 2: Check your Connection

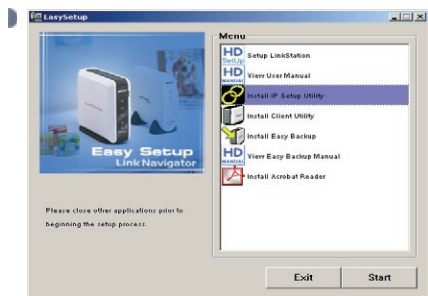
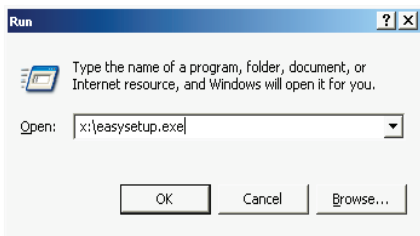
- Check the LINK/ACT light on the front of the LinkStation. If it is lit, then LinkStation is connected properly; please turn to *page 4* to continue setup. If it is not lit, continue to the next step.



- Verify that the LINK/ACT light on the front of LinkStation is lit (see *Step 4's* picture). If it is lit, turn to *page 4* to continue setting up LinkStation. If the LINK/ACT light is still not lit, please verify the following:
 - Both LinkStation and the hub, switch, or PC are powered on.*
 - The Ethernet Cable is securely fastened to both devices.*
 - The Ethernet Cable is not damaged. To verify try using another Ethernet Cable. When verifying new cables, remember to switch the black 'Cable Selection' switch to both positions.*
- If problems persist, contact our 24/7 technical support at **(866) 752-6210**.

Step 3: LinkNavigator Software

- Insert the LinkNavigator CD into a PC's CD-ROM drive. Depending on the PC's configuration, the EasySetup program may launch. If it does not automatically launch, manually launch it by pressing the **'Start'** menu and selecting the **'Run...'** option. When the 'Run' dialog opens, type "x:\easyssetup.exe" (where X is the drive letter of the CD-ROM drive). Press **'OK'** to continue.

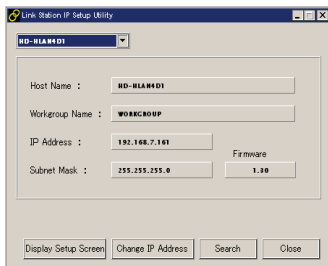


Link Navigator is now running.

Please press the **'Install IP Setup Utility'** button, then press the **'Start'** button.

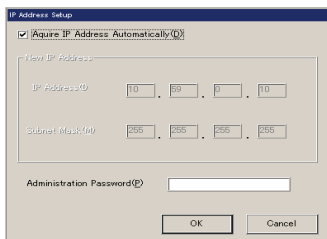
The LinkStation IP Address Configuration Utility will launch and begin scanning for all available LinkStation devices on the network.

- The IP Configuration Utility allows you to easily configure LinkStation's network settings. The **'Search'** button will re-scan the network for all available LinkStations. The drop down menu lists all available LinkStations. If there are multiple LinkStations on the network, then select the proper LinkStation from the drop down menu. Once the proper LinkStation has been selected from the drop down menu, press the **'Change IP Address'** button.



Step 4: Using the Configuration Utility

This part of the program changes LinkStation's IP Address. Check the box that states **'Acquire IP Address Automatically'**. This will give LinkStation an IP Address from the network's router/DHCP server. A static IP Address and gateway can also be set if preferred. The **'Administrator Password'** field sets an administrator password for the web-based configuration. If a password is desired, then type a password in the field. When finished, press the **'OK'** button. LinkStation will confirm and set the IP Address settings.



The login prompt will appear.

The user name is **root**.

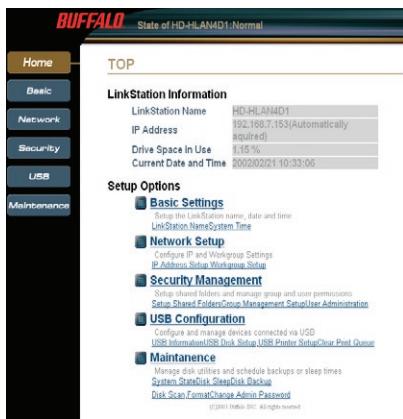
There is NO password by default.

If a password was specified on the previous step, then type that password in the 'Password' field. Press the **'OK'** button when finished.

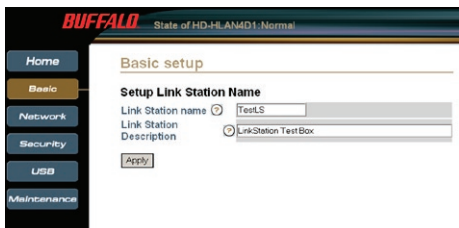
These are LinkStation's main configuration menus. Please **bookmark** this page so it can be accessed for future configuration changes.

Refer to the User Manual for detailed explanations of each menu and their settings. The User Manual is located on the LinkNavigator CD-ROM.

To continue setup, click on the **'Basic'** settings button. This will allow you to setup some important settings.



Then click on the **'LinkStation Name Setup'** link.

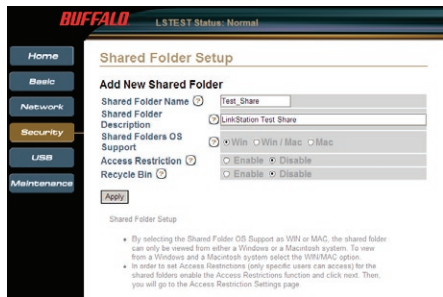
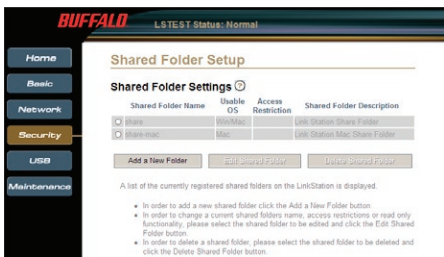


The LinkStation name will be required to access LinkStation. A friendly, easy name is recommended. Enter a suitable name in the **'LinkStation Name'** field. Feel free to use your first or last name, a description of the data to be installed on LinkStation, or simply name it LinkStation. Enter a short description of LinkStation in the **'LinkStation Description'** field. Once completed, press the **'Apply'** button.

By default there are two shares on LinkStation. If you would like to create additional shares for specific users or specific types of data, then click on the **'Security'** tab.

Then click on the **'Shared Folder Setup'** link. From this configuration page

you can add new shares or edit existing shares. Press the **'Add a New Folder'** button to begin creating a new shared folder.

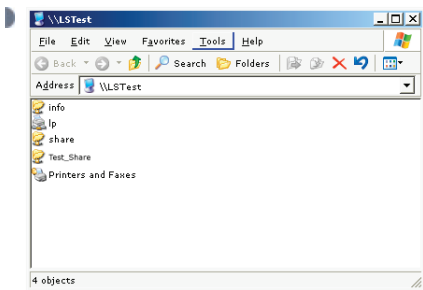
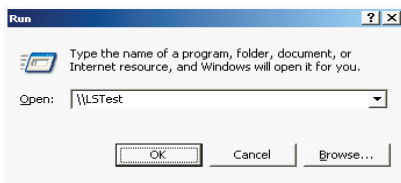


To begin setting up a new share, enter an appropriate share/folder name in the **'Shared Folder Name'** field. Enter a description of the share in the **'Shared Folder Description'** field. It is recommended to leave the remaining settings in their default state. Please refer to the User Manual on the

LinkNavigator CD-ROM before changing any of these settings. Press the **'Apply'** button when finished. Please repeat this step to create additional shares.

Step 5: Accessing LinkStation Data from a PC

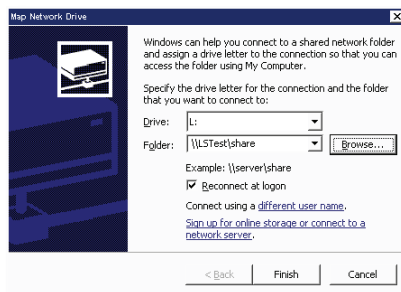
- Press the **'Start'** menu, select the **'Run...'** option. When the **'Run'** dialog appears, please type `\\LinkStation_Name` (where `LinkStation_Name` is the **'LinkStation Name'** set on *Page 6*). Press **'OK'** to continue.



LinkStation's **'Root Directory'** will appear. You will see all of the configured shares. All users can read and write to all folders. To setup security and password protection, please refer to the User Manual on the LinkNavigator CD-ROM. Also, please refer to the User Manual to setup the print server. A drive letter can also

be mapped for LinkStation, see the next step for more information. *LinkStation can be accessed by multiple computers simultaneously.*

- From the previous step's **'Root Directory'** screen, use the pull down menu and click **'Tools'** and then select **'Map Network Drive'**. The **'Map Network Drive'** program will run. Select the drive letter you would like LinkStation to assume from the **'Drive:'** pull down menu. Enter the `\\LinkStation_Name\share_name` in the **'Folder:'** field (where `LinkStation_Name` is the **'LinkStation Name'** and `share_name` is the **'Shared Folder Name'** both set on *Page 6*). Once complete, check the **'Reconnect at logon'** box and press the **'Finish'** button.



Congratulations, LinkStation is set up. Please see the User Manual on the LinkNavigator CD-ROM for more help and configuration options.

Technical Specifications

LAN Standards:	IEEE 802.3u 100BASE-TX; IEEE 802.3 10BASE-T
Transmission Types:	100Mbps/10 Mbps; 100BASE-TX 4B/5B, MLT-3; 10BASE-T Manchester Coding
Access Media:	CSMA/CD
Media Interface:	RJ-45
USB Standard:	USB 2.0 Hi-Speed (HS) Full-Speed (FS) Low-Speed (LS)
USB Connector:	USB A Connector (2)
Data Transmission Speed:	Max: 480 Mbps (HS Mode) Max: 12 Mbps (FS Mode)
Electric Current:	5.0V
Power Consumption:	17W Maximum
Dimensions:	2.4 x 6.94 x 7.4 in. (60 x 173.5 x 185 mm.)
Weight:	3.8 LB. (1.3 kg.)
Operating Temperature:	5-35 C; 20-80% non-condensing

FCC Warning

This device complies with part 15 of the FCC Rules. Operation is subject to the following two conditions: (1) This device may not cause harmful interference, and (2) this device must accept any interference received, including interference that may cause undesired operation.

Buffalo Technology customers can obtain technical support using the following information:

- Online Help: Available on the software CD enclosed with your purchase.
- User Manual: Available on the Software CD enclosed with your purchase.
- Web: **www.buffalotech.com**

North America Support is available 24 hours a day, 7 days a week

Telephone: 866-752-6210 **Email:** info@buffalotech.com

Europe Support is available between 9am-6pm (GMT) Monday-Thursday and 9am-4:30pm on Fridays.

Email: helpdesk@buffalo-technology.ie