



Total Access 832

Two-Port, SHDSL EFM Ethernet NTU

Product Features

- Supports two EFM bonded 2W SHDSL Ports
- Enhanced SHDSL data rate performance up to 5.7 Mbps per loop (11 Mbps total)
- Symmetrical data transfer rates for upstream/downstream VLAN Management
- Auto-failover and recovery
- Plug-and-play auto-line detection for easy installation
- Autosensing 10/100Base-T Ethernet Spectral compatibility for operation alongside other DSLs Command Line Interface (CLI)
- Firmware upgrades through the LTU
- AC power supply
- Deskmount or rackmount options
- Industry leading warranty

The Total Access® 832 is an NTU and terminates up to two e.SHDSL pairs. A single 10/100 Ethernet port is provided for customer use. The Total Access 832 is designed for cost-effective deployment of voice and data services to small and medium size businesses supporting bandwidth of up to 11 Mbps. The Total Access 832 is an Ethernet NTU designed for LAN, WAN, and Metro-Ethernet extension as well as supporting VoIP applications with both voice and data traffic. Enterprise customers, as well as integrated communications providers, such as CLECs, ILECs and ISPs, will benefit from this intuitive, easy to install, plug-and-play unit. An additional key feature of this unit is auto-line detection, which enables synchronization with data rates from 192 kbps to 5.7 Mbps without operator intervention.

This Ethernet NTU terminates up to two, 2W SHDSL ports on an RJ-48C connector supporting data rates up to 5.7 Mbps per copper pair. Together, the two EFM bonded loops provide up to 11 Mbps over a single, logical connection. In the event that a single loop fails, the Total Access 832 will continue to operate on the remaining loop, providing extra resiliency. Once the failed loop is operational again, the Total Access will automatically detect its availability and will auto-recover to the original configuration.

SHDSL is one of the most functional standards-based DSL technologies. SHDSL incorporates spectral compatibility, impairment tolerance, and high-speed symmetric data rates. SHDSL is particularly well suited for business-based deployments incorporating voice-line delivery, VoIP, Internet, and remote LAN data connectivity. Less overhead is required for EFM bonding than IMA and MLPPP, leaving more bandwidth available for customer traffic.

The EIA-232 craft port enables local access for configuration and status information. The SHDSL EOC provides carriers a management channel to remotely configure and collect status information.

The compact design provides safety and reliability required for customer premise installations. It can be wallmounted or rack mounted depending on customer preferences. When wallmounted, the Total Access 832 only occupies a 6-inch by 10-inch area of the customer's telephone wiring closet (less than the size of a standard piece of notebook paper). For rackmount installations, custom 19-inch rackmount shelves are available.

General Information

800 9ADTRAN
info@adtran.com
www.adtran.com

Pre-Sales

Technical Support

888 5ADTRAN
support@adtran.com
www.adtran.com/support

Where to Buy

800 827 0807

www.adtran.com/where2buy

Post-Sales

Technical Support

800 726 8663

support@adtran.com

www.adtran.com/support

Regional Offices

Dallas, TX

972 830 9070

Denver, CO

303 471 9150

Kansas City, KS

800 471 8649

Newark, NJ

800 471 8656

Ontario, Canada

416 290 0585

Quebec, Canada

877 923 8726

San Antonio, TX

888 223 7671

International Inquiries

+1 256 963 8716 voice

+1 256 963 6300 fax

international@adtran.com

www.adtran.com/international

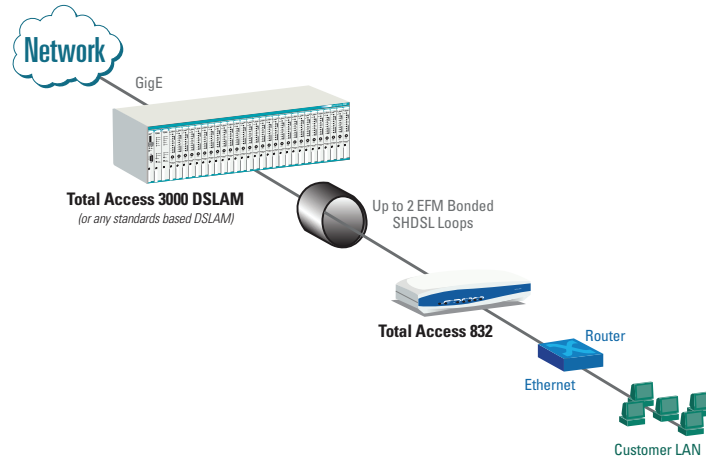


ADTRAN is an ISO 9001, ISO 14001 and a TL 9000 certified supplier.

61200411L1-8A October 2006
Copyright © 2006 ADTRAN, Inc.
All rights reserved.

Total Access 832

Two-Port, SHDSL EFM Ethernet NTU



Product Specifications

Physical Interface

- **Network Interface:** RJ-48C SHDSL
- **Customer:** Autosensing 10/100Base-T Ethernet
 - RJ-45
 - Auto MDI/MDIX
 - Auto-Rate
 - Auto-Duplex
- **Management:** Console Port
 - DB-9
 - EIA-232

Diagnostics LEDs

- Power/Alarm LED
- SHDSL Loop Status for each loop
- Ethernet LED

Features

- Variable rate bonding for the SHDSL loops
- Auto-failover and recovery
- Plug-and-play auto-line detection
- VLAN tagging support
- Priority queuing of traffic based on VLAN priority
- Supports eight class of service queues

Standards Compliant

- ITU-G.991.2-2003, Annex A & B – SHDSL
- IEEE 802.1p priority marking
- IEEE 802.1d dynamic/transparent bridging
- IEEE 802.1q VLAN tagging
- IEEE 802.3-ah EFM standard
- IEEE 802.3u Ethernet
- MEF 2005

Management & Administration

- Management Methods
- Craft interface (Local, EIA-232)
- SNMP proxy through TA3000 LTU
- Firmware upgrades
- Local: XMODEM through craft port

- Remote: Managed through TA3000 LTU
- Supports OAM management status and loopback messaging
- Configuration script download

Environment

- **Operating temperature:** : 0° to 50°C (32° to 122°F)
- **Storage temperature:** -20° to 70°C (-4° to 158°F)
- **Relative humidity:** Up to 95%, non-condensing

Physical

- **Dimensions:** 2 in. H, 9.5 in. W, 6 in. D
- **Weight:** 2.0 lbs.
- **AC power:** 12 VDC powered unit with country specific wallmount AC power supply
- **DC power:** External "brick" power supplies available for different regions
- **Power Dissipation:** 5 watts max.

Agency Approvals

- FCC Part 15 Class A
- FCC Part 68
- UL 60950, CAN/CSA C22.2 No. 60950
- EN 60950, IEC 60950, AS 3260/ AS NZS60950
- NEBS Level 3
- S043.2
- ITU-T K21:2000 Enhanced

Ordering Information

Equipment	Part #
Annex B – 12 VDC Power	1200718L1
Annex A – 12 VDC Power	1200718L2
19 in. Rackmount Shelf – for one TA832	1200411L1