

USB V.90 TINY MODEM

Quick Installation Guide

FCC REGULATORY STATEMENTS

The United States Federal Communication Commission (FCC) and the Canadian Department of Communications have established certain rules governing the use of modems and other electronic equipment.

FCC Part 68 Registration

This high speed USB 56K FAX/MODEM complies with FCC Part 68 rules, and the use of this modem is subject to the following restrictions:

1. The FCC has established rules which permit this device to be directly connected to the telephone network. Standardized jacks are used for these connections. This equipment should not be used on party lines or coin phones.
2. If this device is malfunctioning, it may also be causing harm to the telephone network; this device should be disconnected until the source of the problem can be determined and until repair has been made. If this is not done, the telephone company may temporarily disconnect service.
3. The telephone company may make changes in its facilities, equipment, operation and procedures; if such changes affect the compatibility or use of this device, the telephone company is required to give adequate notice of the situation with the FCC.
4. If the telephone company requests information on what equipment is connected to their lines, inform them of:
 - a. The telephone number to which this unit is connected.
 - b. The Ringer Equivalence Number (REN).
 - c. The USOC jack required.
 - d. The FCC Registration number.

Items (b) and (d) are indicated on the label. The Ringer Equivalence Number (REN) is used to determine how many devices can be connected to your telephone line. In most areas, the sum of the REN's of all the devices on any one line should not exceed 5.0. If too many devices are attached, they may not ring properly.

FCC Part 15 Registration

This device complies with Part 15 of FCC rules. Operation is subject to the following two conditions:

- 1) This device may not cause harmful interference, and
- 2) This device must accept any interference received, including interference that may cause undesired operation.

This equipment has been tested and found to comply with the limits for a Class B digital device, pursuant to Part 15 of the FCC Rules. These limits are designed to provide reasonable protection against harmful interference in a residential installation. This equipment generates, uses and can radiate radio frequency energy, and if not installed and used in accordance with the instructions, may cause harmful interference to radio communications. However, there is no guarantee that interference will not occur in a particular installation. If this equipment does cause harmful interference to radio or television reception, which can be determined by turning off and on, the user is encouraged to try to correct the interference by one or more of the following measures:

- (1) Reorient or relocate the receiving antenna.
 - (a) Increase the distance between the equipment and receiver
 - (b) Connect the equipment into an outlet on a circuit different from that to which the receiver is connected.
- (2) Consult an experienced radio/TV technician for help.

CTR 21 pan-European Certification

This equipment has been approved in accordance with Council Decision 98/482/EC for pan-European single terminal connection to the public switched telephone network (PSTN). However, due to differences between the individual PSTNs provided in different countries, the approval does not, of itself, give an unconditional assurance of successful operation on every PSTN network termination point. In the event of problems, you should contact your equipment supplier in the first instance.

This device is designed to work with the notified networks in all EC member states. Nevertheless, some of the network services in individual countries might not be supported, but they will not affect the normal data and fax applications. For example, the metering charge service in Germany. Besides you may encounter difficulty of using PULSE dialing function in some of the countries, such as Nordic countries. This kind of network compatibility is dependent on the physical and software settings of this device. If the users are desired to use this device on those networks, they should contact the vendor or supplier first.

Table of Contents

Introduction	1
SPECIFICATIONS	1
<i>Modem</i>	1
<i>Fax</i>	1
SYSTEM REQUIREMENTS	2
Hardware Installation	3
Software Installation	4
INSTALLATION FOR WINDOWS 98	4
<i>Setup Diagnostics</i>	6
INSTALLATION FOR WINDOWS 2000	7
<i>Setup Diagnostics</i>	9
INSTALLATION FOR WINDOWS MILLENNIUM.....	10
<i>Setup Diagnostics</i>	13
Internet Access.....	14

Introduction

The USB V.90 Tiny Modem complies with the Universal Serial Bus functionality built in Windows 98/2000/Millennium. It is compatible with Bell, ITU-T (formerly CCITT) and Hayes AT commands. The USB V.90 Tiny Modem enables you enjoy all the benefit offered by USB technology and get a faster and easier Internet access.

With the especially compact design of the Tiny Modem, you can not only save the cost but also eliminate the need of using an extra USB cable as you usually do. Moreover, using standard phone lines, the data communication functions of the modem will enable you to successfully hook up to the Internet, transmit E-mail, send and receive information and communicate with other PCs, Bulletin Board Services (BBS) or computer networks such as CompuServe.

Specifications

Modem

V.90, K56flex 56Kbps, V.34+ 33.6Kbps, V.34
28.8Kbps, V.32bis 14.4Kbps
V.42bis/V.42, MNP 2-5 data compression and
error correction
AT command set

Fax

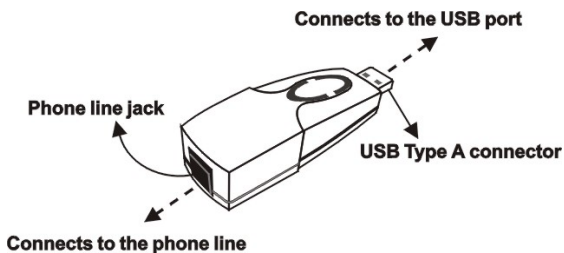
G3, V.17 14400bps, V.29 9600bps, Fax Service
Class 1 compliant

System Requirements

- A Pentium[®] processor-based personal computer
166MMX or above
- At least 16 MB of RAM
- An USB port
- Microsoft Windows 98/2000/Millennium
- A CD-ROM drive

Hardware Installation

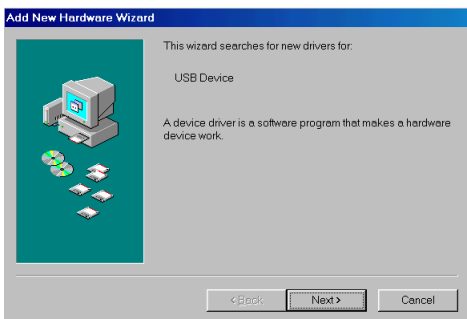
1. Locate the USB host port of your system.
Connects the USB Type A connector to the USB host port on your computer.
2. Connects the phone line to the phone line jack



Software Installation

Installation for Windows 98

1. When the USB V.90 Tiny Modem is well connected to your computer, Windows 98 will automatically detect the new device. Click **Next**.

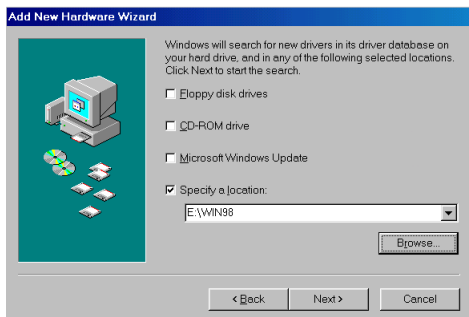


2. Select **Search for a suitable driver for my device (recommended)** and click **Next**.

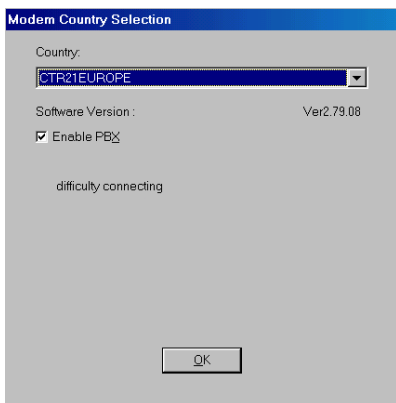


3. Insert the device driver compact disc into the CD-ROM drive and select **Specify a location**. Click **Browse** button and select the drive where

you load the device driver. Click **Next**. Windows will start searching for the appropriate driver for the software installation.



4. Click **Next**.
5. Click **Finish**. The software installation is successfully completed.
6. When the following dialog box appears, select the country/location where you are, and click **Enable PBX**. Click **OK**.

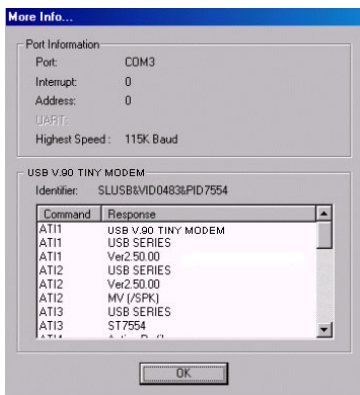


7. When finished, restart your computer to activate the new device.

Setup Diagnostics

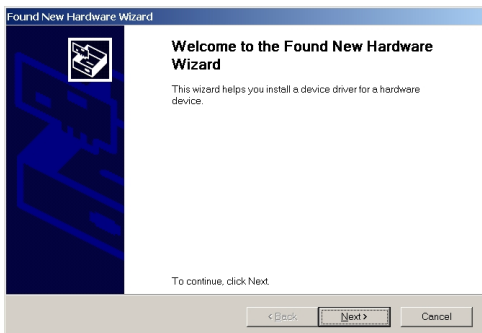
You can perform the following steps to check if your USB V.90 Tiny Modem is well installed.

1. Go to **Start→Settings→Control Panel→Modems.**
2. When the **Modems Properties** dialog box appears, select the **Diagnostics** tab.
3. Select **USB V.90 TINY MODEM** and click **OK.**
4. If **USB V.90 TINY MODEM** is not found, stop the diagnostics procedures and skip to the following section titled **Uninstallation.**
5. The USB modem is well installed if the information is found on the following screen. Click **OK** to exit.

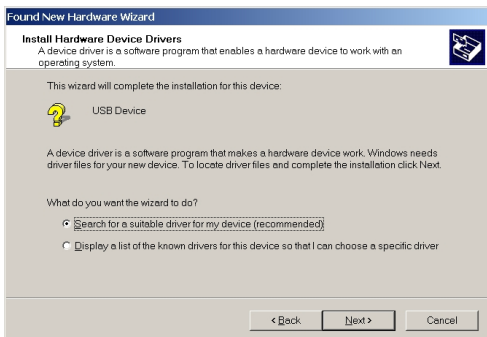


Installation for Windows 2000

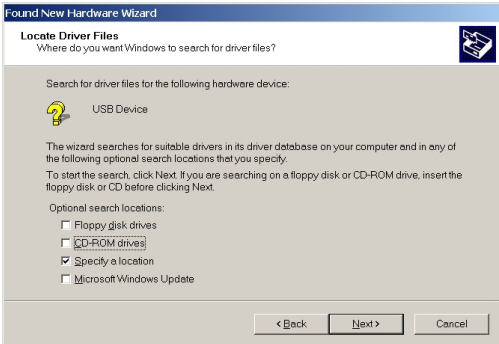
1. Once the USB V.90 Tiny Modem is well connected to your computer, Windows 2000 will automatically detect the new device. Click **Next**.



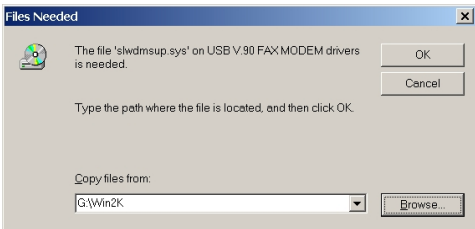
2. Select **Search for a suitable driver for my device (recommended)** and click **Next**.



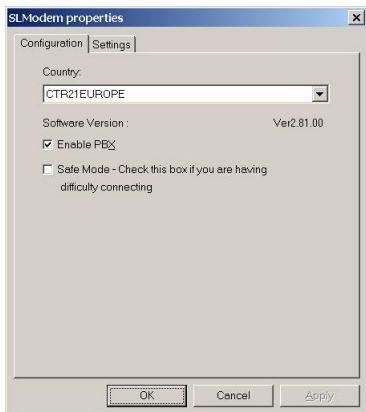
3. Insert the device driver compact disc into the CD-ROM drive. Select **Specify a location** and click **Next**.



4. Click **Browse** button and select the drive where you load the device driver (for example: **G:\WIN2K**). Click **OK**. Windows will start searching for the appropriate driver for the software installation.

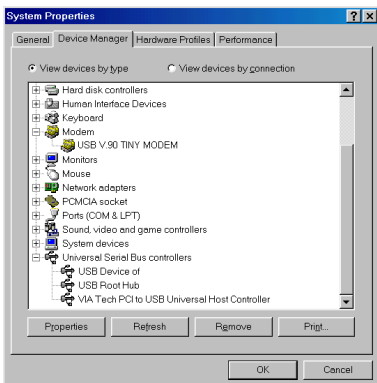


5. Click **Next** to continue.
6. Click **Yes**.
7. Click **Finish**.
8. When Windows prompt you “**Modem Country Selection**”, choose the country where you locate. Select the **Enable PBX** check box and click **OK**. The software installation is then complete.
9. The software installation is successfully complete.



Setup Diagnostics

To verify whether your USB V.90 Tiny Modem exists in your computer and is enabled, go to **My Computer**→**Control Panel**→**System**. Click the **Device Manager** tab. If the **USB V.90 TINY MODEM** and **Network adapters** are found, it means that your Network device is well installed. If not, consult your computer dealer for technical support.

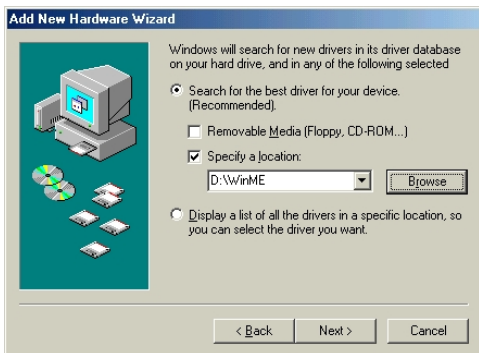


Installation for Windows Millennium

1. When the USB V.90 Tiny Modem is well connected to your computer, Windows ME will automatically detect the new device. Select **Specify the location of the driver (Advanced)** and click **Next**.



2. Load the device driver compact disc into the CD-ROM of your system and select **Specify a location**. Click the **Browse** button to select the drive where you load the device driver (for example: **D:\WinME**). Click **Next**.



3. Expect a minor delay for Windows to search for the appropriate driver for the device. Click **Next**.



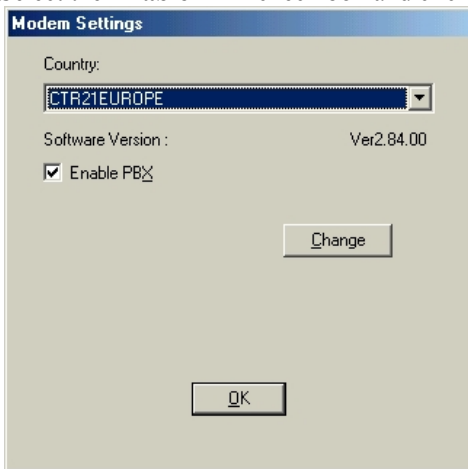
4. Click **Finish**. The installation program will continue.
5. Select **Specify the location of the driver (Advanced)** and click **Next**.



6. When the above figure appears, repeat step 2, namely, select **Specify a location**. Click the **Browse** button to select the drive where you load the device driver (for example: **D:\WinME**). Click **Next**.



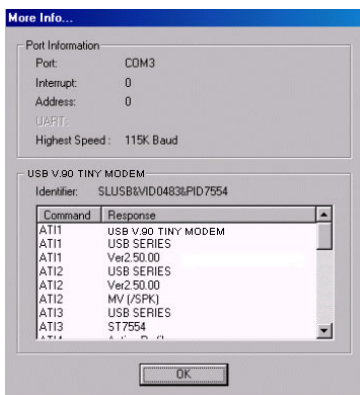
7. Click **Next**.
8. When Windows prompt you “**Modem Country Selection**”, choose the country where you locate. Select the **Enable PBX** check box and click **OK**.



9. Click **Finish** to complete the installation.

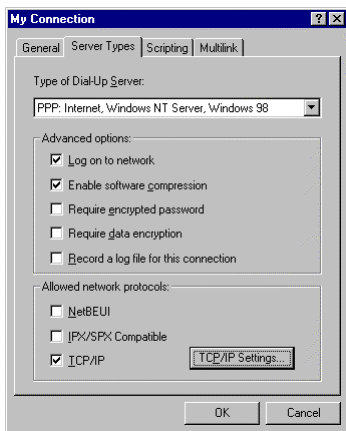
Setup Diagnostics

1. To verify if the USB V.90 Tiny Modem is well installed and enabled, you can perform the following steps.
2. Go to **Start→Settings→Control Panel→Modems.**
3. When the **Modems Properties** dialog box appears, select the **Diagnostics** tab.
4. Highlight **USB V.90 TINY MODEM** and click the **More Info...** button.
5. If the following information can be found, it means that the USB modem is well installed and enabled. Click **OK** to exit.

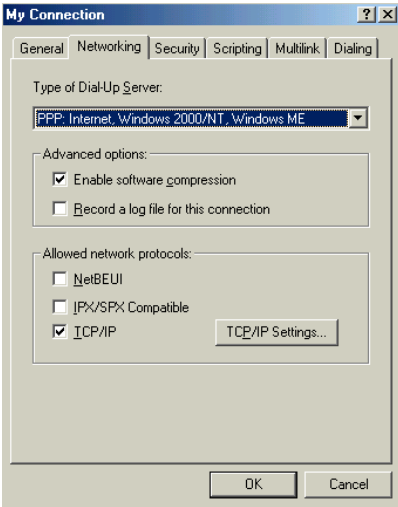


Internet Access

1. Go to **My Computer**.
2. Select **Dial-Up Networking**.
3. Double-click **Make a New Connection**, a dialogue box will appear for you to name the new connection and select the device. Name the new connection appropriately and click **Next**.
4. Enter the area code and phone number of your Internet Service Provider (ISP). Follow the on-screen instructions to proceed.
5. When finished, from the **Dial-Up Networking** window, right-click your newly created connection. Select **Properties**. On the **Server Types** tab, enter the proper selections as shown below and click **OK** to finish the settings.



6. For Windows Millennium, the figure above should be displayed as follows.



7. Now, you are ready to connect to the Internet.