

USB Series
56K V.90 Fax/Modem

Quick Installation Guide

INTRODUCTION

The USB V.90 56K Fax/Modem is a communication device that is Bell, ITU-T (formerly CCITT) and Hayes AT commands compatible, allowing it to be used worldwide with today's popular communication software programs.

SPECIFICATIONS

Modem

V.90, K56flex 56Kbps, V.34+ 33.6Kbps,
V.34 28.8Kbps, V.32bis 14.4Kbps.

V.42bis/V.42, MNP 2-5 data compression
and error correction.

AT command set.

Fax

Group 3, V.17 14400bps, V.29 9600bps

Fax Service Class 1 compliant.

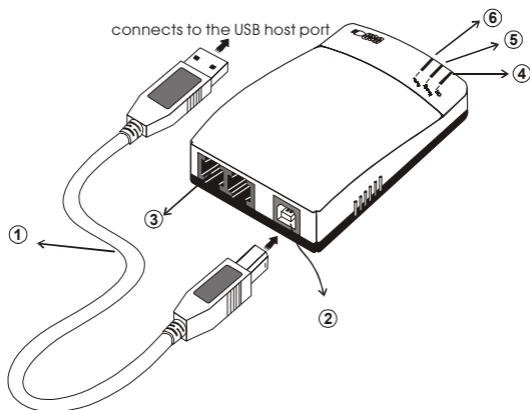
SYSTEM REQUIREMENTS

- An IBM compatible PC or notebook computer with USB interface
- Running with Windows 98
- Drivers and utilities provided with this product
- RJ11 cable for connecting to a phone plug
- USB cable for USB Fax/Modem connected to your computer
- Driver software loaded on your PC
- Data and/or fax communications software.

HARDWARE INSTALLATION

Parts Names and Functions

- ① **USB connection cable:** connects the USB host port with the USB V.90 FAX/MODEM.
- ② **USB-B:** USB device port.
- ③ **LINE** jack: connects to the phone line.
- ④ **OH** LED indicator: glows when it is in on-line status.
- ⑤ **Ready** LED indicator: glows when the device is well installed.
- ⑥ **Rx/Tx** LED indicator: blinks when the USB V.90 Fax/Modem is transmitting/receiving data.



1. Locate the USB host port of your system. Align the USB connector toward the USB

host port, push evenly and steadily until it is seated.

2. Connect another end of the USB connection cable to the device port (**USB B**) of your USB V.90 Fax/Modem until it clicks.
3. Connect your phone line to the **LINE** jack.

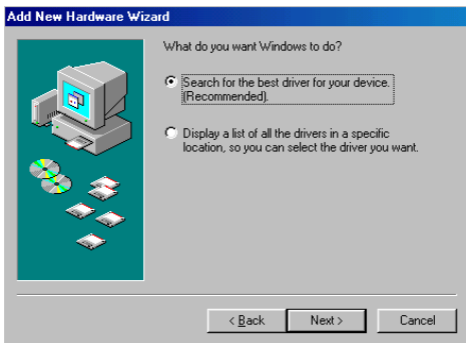
SOFTWARE INSTALLATION

Installation for Windows 98

1. Once the 56K V. 90 Fax/Modem is well connected to your computer as described in the previous section, Windows will appear the following picture. Click **Next**.



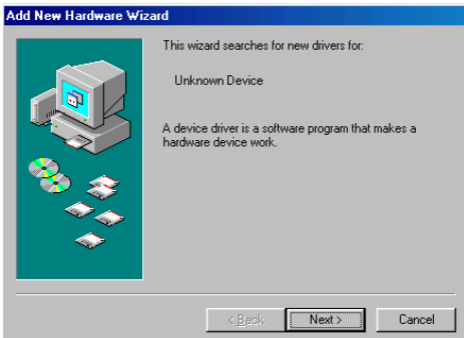
2. Select **Search for the best driver for your device (Recommended)** to make Windows search for the best driver for the new device. And click **Next**.



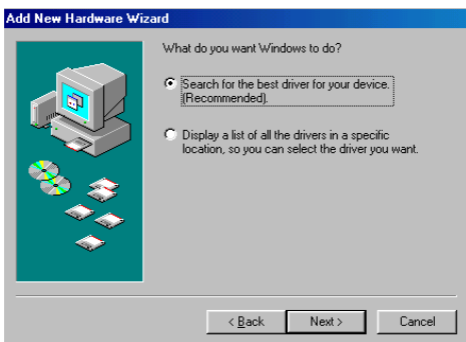
3. Click **Specify a location** and type the floppy disk drive letter followed by **driver\win 98**. Click **Next**. Or you may click the **Browse** button to select the **driver\win 98** folder in your disk drive.



4. Click **Next** to continue.
5. Click **Finish** to continue.
6. Click **Next** to install another driver when the following picture appears.



7. Select **Search for the best driver for your device (Recommended)** to make Windows search for the best driver for the new device. Click **Next**.



8. Click **Specify a location** and type the floppy disk drive letter followed by **driver\win 98**. Click **Next**. Or you may click the **Browse** button to select the **driver\win 98** folder in your disk drive.



9. Click **Next** to continue.

10. Click **Finish**. Then the installation will be successfully completed.



Installation for Windows 2000

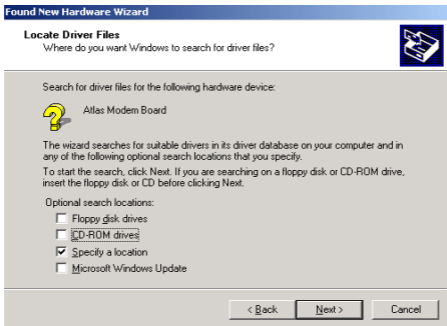
1. Once the 56K V. 90 Fax/Modem is well connected to your computer as described in the previous section, Windows will appear the following picture. Click **Next**.



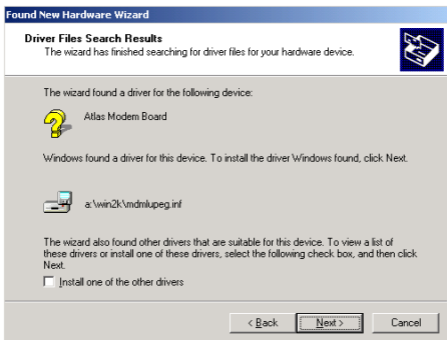
2. Click **Next** and put disk for the device driver into your disk drive.



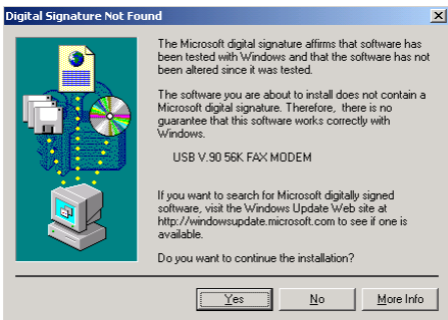
3. Select **Specify a Location** when you see the following picture. Type the floppy disk drive letter followed by **driver\win2K** and click **Next**. Or you may click the **Browse** button to select the **drive\win 2K** folder in your disk drive.



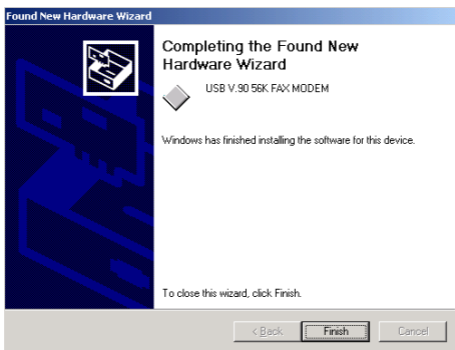
4. Click Next.



5. Click Yes to continue the installation.



6. Click **Finish**. Then the installation will be fully completed.



Installation for Windows ME

1. Once the 56K V. 90 Fax/Modem is well connected to your computer as described in the previous section, Windows will appear the following picture. Select **Specify the location of the driver (Advanced)**.



2. Click **Next** and load the device driver disk onto your disk drive.

3. Click **Specify a Location** when you see the following picture. You may click the **Browse** button to select the drive:\A:\WINME folder in your disk drive. Click **Next**.



4. Click **Next** to continue the installation.



5. Click **Finish** to install another driver when the following picture appears.



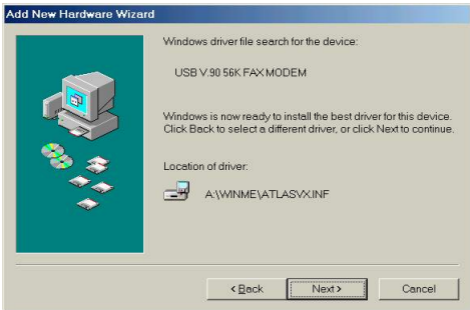
6. Select **Specify the location of the driver (Advanced)**. Click **Next**.



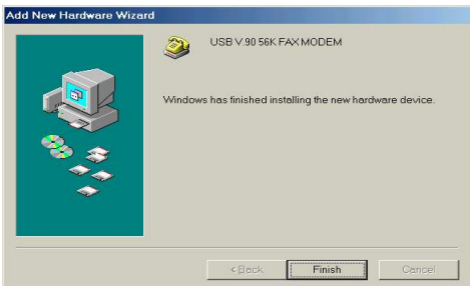
7. Click **Specify a Location** when you see the following picture. You may click the **Browse** button to select the **drive\A:\WINME** folder in your disk drive. Then click **Next**.



8. Click **Next** to continue.



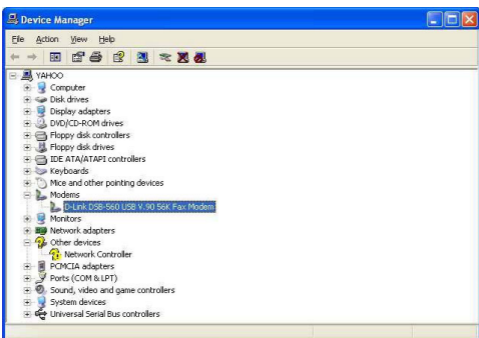
9. Click **Finish**. Then the installation will be fully completed.



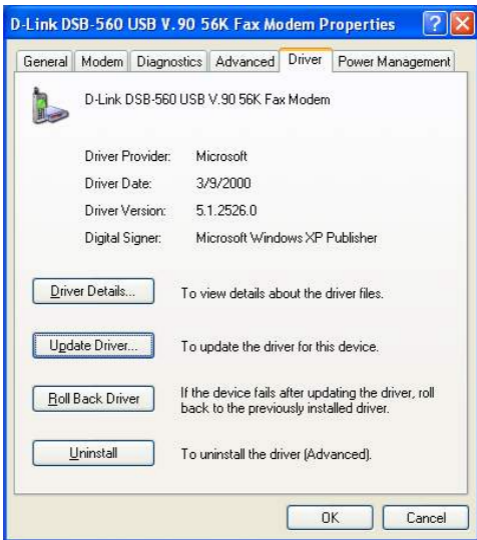
Installation for Windows XP

Once the 56K V. 90 Fax/Modem is well connected to your computer as described in the previous section, you may update the device driver with the utility provided by the manufacturer.

1. Go to **Control Panel** → **System** → **Hardware** → **Device Manager** → **Modems**. When Windows prompt the following picture. Select **D-link DSB-560 USB V.90 56K Fax Modem**.



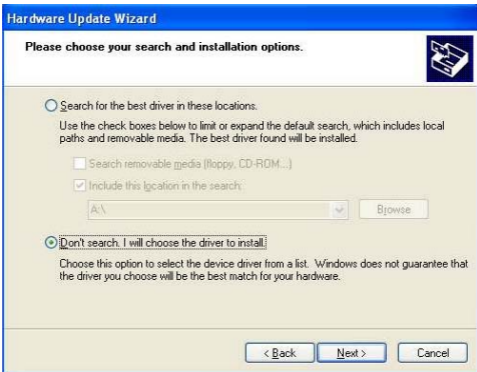
2. When you see the following window, select the **Driver** tab. Then click the **Update Driver...** button. Click **OK**.



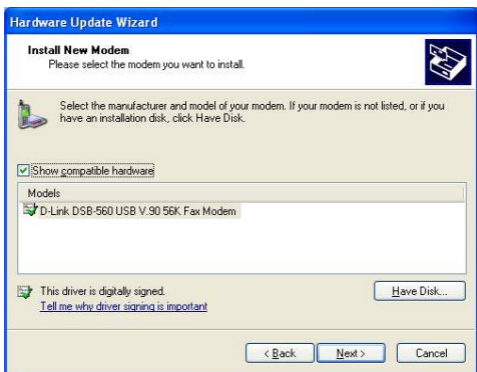
3. Select **Install from a list of specific location (Advanced)**. Click **Next** to continue.



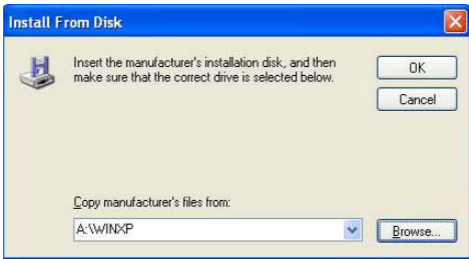
4. Select **Don't search**. I will choose the driver to install. Click **Next**.



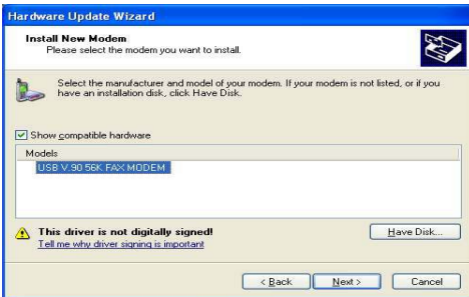
5. Highlight **D-Link DSB-560 USB V. 90 56K Fax Modem**, and click **Have Disk**.



6. Load the floppy disk or compact disc whichever contains the device driver. Press **Browse** to direct Windows XP to the location where the driver stored (e.g., **A:\WINXP**) and click **OK**.



7. Click **Next**.



8. Click **Continue Anyway** when the following window appears.



9. Click **Finish** to complete the software installation.



10. To verify if the device is enabled in your system, make sure the device name is modified to be **USB V. 90 56K Fax MODEM**. If not, consult your distributor for technical support.

