

PCMCIA Fax Modem 56K

Quick Installation Guide

FCC REGULATORY STATEMENTS

FCC Part 68 Registration

This device complies with FCC Part 68 rules, and the use of this device is subject to the following restrictions:

1. The FCC has established rules which permit this device to be directly connected to the telephone network. Standardized jacks are used for these connections. This equipment should not be used on party lines or coin phones.
2. If this device is malfunctioning, it may also be causing harm to the telephone network; this device should be disconnected until the source of the problem can be determined and until repair has been made. If this is not done, the telephone company may temporarily disconnect service.
3. The telephone company may make changes in its facilities, equipment, operation and procedures; if such changes affect the compatibility or use of this device, the telephone company is required to give adequate notice of the situation with the FCC.
4. If the telephone company requests information on what equipment is connected to their lines, inform them of the following:
 - a. The telephone number to which this unit is connected.
 - b. The Ringer Equivalence Number (REN).
 - c. The USOC jack required.
 - d. The FCC Registration number.

Items (b) and (d) are indicated on the label. The Ringer Equivalence Number (REN) is used to determine how many devices can be connected to your telephone line. In most areas, the sum of the REN's of all the devices on any one line should not exceed 5.0. If too many devices are attached, they may not ring properly.

FCC Part 15 Registration

This equipment has been tested and found to comply with the limits for a Class B digital device, pursuant to Part 15 of the FCC Rules. These limits are designed to provide reasonable protection against harmful interference in a residential installation. This equipment generates, uses and can radiate radio frequency energy, and if not installed and used in accordance with the instructions, may cause harmful interference to radio communications. However, there is no guarantee that interference will not occur in a particular installation. If this equipment does cause harmful interference to radio or television reception, which can be determined by turning off and on, the user is encouraged to try to correct the interference by one or more of the following measures:

1. Reorient or relocate the receiving antenna.
2. Increase the distance between the equipment and receiver
3. Connect the equipment into an outlet on a circuit different from that to which the receiver is connected.
4. Consult an experienced radio/TV technician for help.

Caution: Change or modifications not expressly approved by party responsible for compliance could void the user's authority to operate the equipment.

CTR 21 pan-European Certification

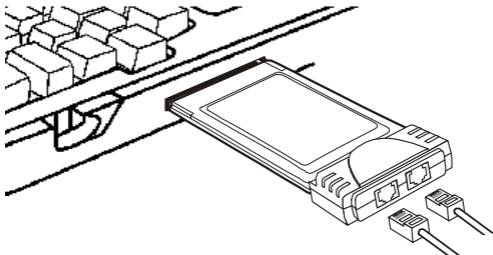
This equipment has been approved in accordance with Council Decision 98/482/EC for pan-European single terminal connection to the public switched telephone network (PSTN). However, due to differences between the individual PSTNs provided in different countries, the approval does not, of itself, give an unconditional assurance of successful operation on every PSTN network termination point. In the event of problems, you should contact your equipment supplier in the first instance.

This device is designed to work with the notified networks in all EC member states. Nevertheless, some of the network services in individual countries might not be supported, but they will not affect the normal data and fax applications. For example, the metering charge service in Germany. Besides you may encounter difficulty of using PULSE dialing function in some of the countries, such as Nordic countries. This kind of network compatibility is dependent on the physical and software settings of this device. If the users are desired to use this device on those networks, they should contact the vendor or supplier first.

HARDWARE INSTALLATION

1. Locate the PCMCIA slot of your system.
2. Align the PCMCIA FAX MODEM 56K toward the PCMCIA slot. Push evenly and steadily until it is seated.

Notebook



3. Connect the other end of the PC Card cable to the telephone line outlet.
4. You are now ready to continue the software installation.

For Windows NT does not support "Hot Insert/Remove", be sure to complete the hardware installation as described above before you start Windows NT and software installation.

SOFTWARE INSTALLATION

Installation for Windows 98

1. Make sure the PCMCIA Fax Modem 56K is well connected to your computer. Start Windows 98, Windows 98 will automatically detect the new device.
2. The Add New Hardware Wizard dialog box will appear. Click **Next**.
3. Select “**Search for the best driver for your device (Recommended)**”. Click **Next**.
4. Insert the driver diskette for PCMCIA Fax Modem 56K into your free floppy drive.
5. Select “**Floppy disk drives**”. Click **Next**.




6. Press **Finish** to complete the installation. Now the fax/modem is ready to go.

Installation for Windows 95

1. Make sure the PCMCIA Fax Modem 56K is well connected to your computer.
2. Start Windows 95, Windows 95 will automatically detect the new device.

3. The **New Hardware Found** dialog box will appear. Select **Driver from disk provided by hardware manufacturer**, and click **OK**.
4. Insert the device driver diskette for the PCMCIA Fax Modem 56K. Type **A:**, and Windows 95 will install the modem driver for you automatically.
5. Connect the FAX/MODEM interface cable and hook up the RJ-11 plug to the telephone line outlet.
6. Restart Windows 95. Now your fax/ modem is ready to go.

 **Note: Insert FAX/MODEM before running the communication program.**

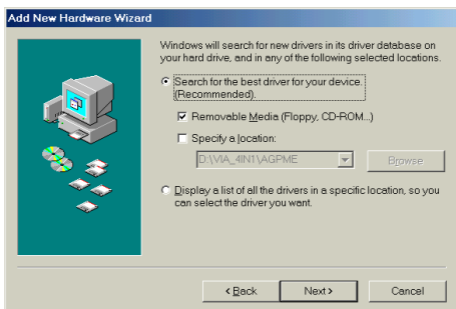
Installation for Windows NT

1. Make sure the 56K Fax/Modem PC Card is well connected into the PCMCIA slot.
2. Run Windows NT 4.0.
3. Double-click the **Modem** Icon in **Control Panel**.
4. In the **Install New Modem** window, click **Next** to detect the modem automatically.
5. Click the **Change** button to change the modem type.
6. Click **Have Disk...** button.
7. Insert the INF file driver diskette into the floppy drive.
8. Enter the path "**A:**", then press **OK**.
9. Click **OK** to accept the modem type "**PCMCIA 56Kbps FAX + Modem**".

10. Click **Finish**. Now, the installation is completed and the Fax/Modem PC Card is ready to go.

Installation for Windows Millennium

1. Once the **PCMCIA Fax Modem 56K PC Card** is plugged into the PCMCIA slot of your system, Windows will automatically detect the device. Select **Specify the location of the driver (Advanced)** and click **Next**.
2. Select **Search for the best driver for your device. (Recommended)** and click **Next**.



3. Click **Next**.
4. Click **Finish** to complete the software installation.

Installation for Windows NT

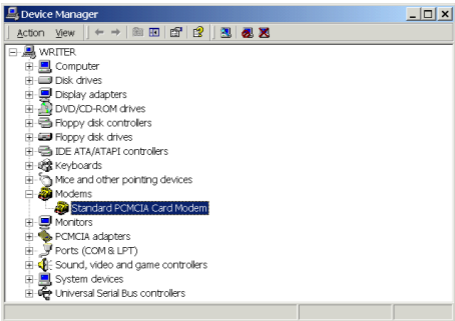
1. Plug the Fax/Modem PC Card into the PCMCIA slot.

2. Run Windows NT 4.0.
3. Double click the *Modem* Icon in **Control Panel**.
4. In the *Install New Modem* window, press the **Next** button to detect the modem automatically.
5. Press the **Change** button to change the modem type.
6. Press the **Have Disk...** button.
7. Insert the INF file disk bundled with the fax/modem PC Card to the floppy drive.
8. Enter the path **A:** and press **OK** button.
9. Press **OK** to accept the modem type "*PCMCIA 56Kbps FAX + Modem*".
10. Press **Finish** button. The installation is now completed and the Fax/Modem PC Card is ready to go.

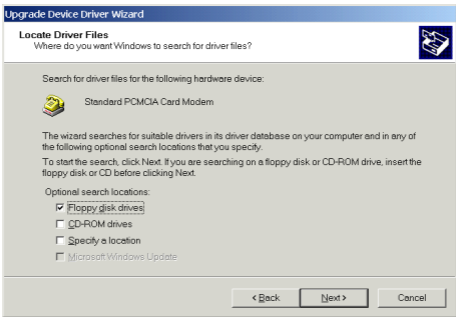
Installation for Windows 2000

Once the **PCMCIA Fax Modem 56K PC Card** is plugged into your PCMCIA slot, Windows will prompt you a standard PCMCIA Card Modem has been installed. You can use the Microsoft built-in driver, or perform the following procedures to update the latest driver.

1. Go to **My Computer** → **Control Panel** → **System** → **Hardware** → **Device Manager**. Select **Modems** and double-click **Standard PCMCIA Card Modem**.



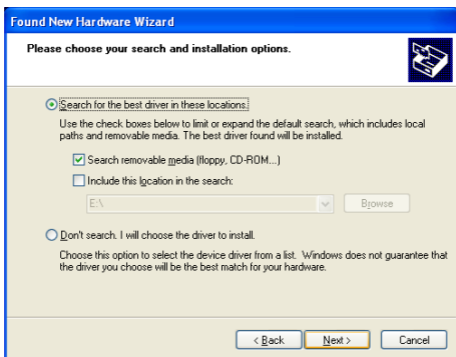
2. Select the **Driver** tab and click the **Update Driver...** button.
3. Click **Next** to continue.
4. Select **Search for a suitable driver for my device (Recommended)** as illustrated below. And click **Next**.
5. Load the device driver diskette into your floppy drive. Select **Floppy disk drives** and click **Next**.



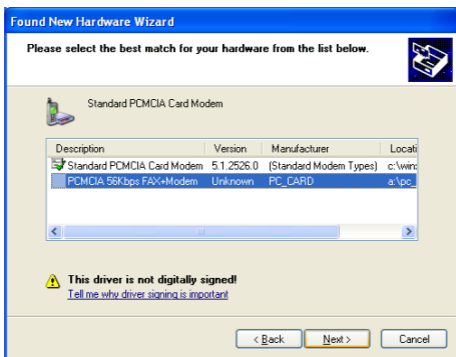
6. Click **Next**.
7. When Windows prompt you to continue the installation. Select **Yes**.
8. Click **Finish** to complete the installation.
9. Remember to restart your computer to activate this new device.

Installation for Windows XP

1. Once the device is well inserted into your PCMCIA slot, windows will prompt you the following message. Select **install form a list or a specific location (Advanced)** and click **next**.
2. Select **Search removable media...** and click **Next**.



3. Select the device you inserted, i.e., **PCMCIA 56Kbps FAX+Modem** and click **next**.



4. Click **Continue anyway**. Then windows will start to copy the appropriate driver into your system.
5. Click **Finish** to complete the software installation.