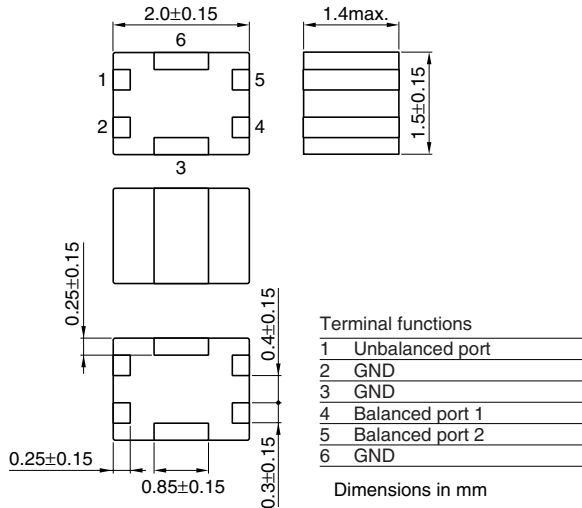


Multilayer Chip Band Pass Filters(Balance Output Type) Conformity to RoHS Directive

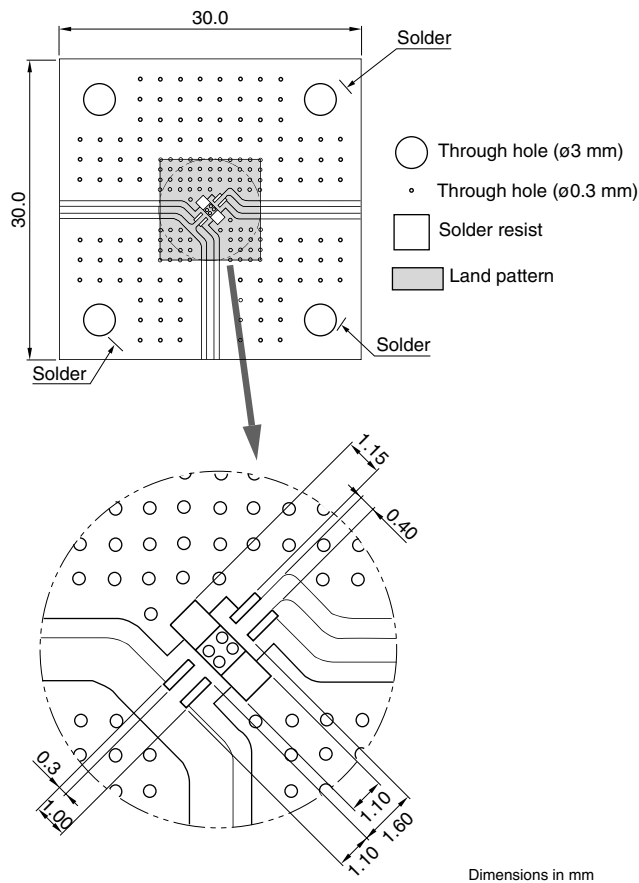
For Bluetooth & 2.4GHz W-LAN

DEA Series DEA215425BT-7075C2

SHAPES AND DIMENSIONS



RECOMMENDED PC BOARD PATTERNS



• Conformity to RoHS Directive: This means that, in conformity with EU Directive 2002/95/EC, lead, cadmium, mercury, hexavalent chromium, and specific bromine-based flame retardants, PBB and PBDE, have not been used, except for exempted applications.

• All specifications are subject to change without notice.

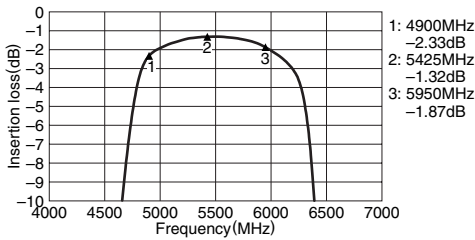
ELECTRICAL CHARACTERISTICS

Item	Typical value	
Frequency range(pass band)	4900 to 5950MHz	
Unbalanced impedance	50Ω(Nominal)	
Balanced impedance	100Ω(Nominal)	
Insertion loss	[+25°C]	2.8dB max.
	[-45 to +85°C]	3.1dB max.
Attenuation	[DC to 4000MHz]	30dB min.
	[6500 to 7000MHz]	12dB min.
	[7200 to 8000MHz]	20dB min.
	[8000 to 10000MHz]	15dB min.
	[10000 to 18000MHz]	10dB min.
Unbalanced port return loss	[4900 to 5950MHz]	9.54dB min.
Phase difference at balanced port	180±15deg.	
Amplitude imbalance at balanced port	0±1.5dB	
Temperature range	Operating	-40 to +85°C
	Storage	-40 to +85°C

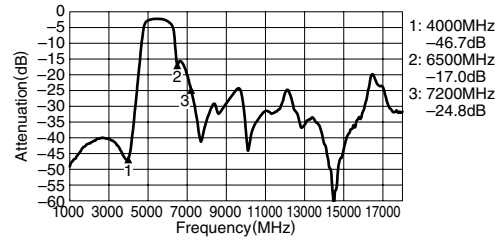
FREQUENCY CHARACTERISTICS

Unbalance 50Ω/Balance 100Ω

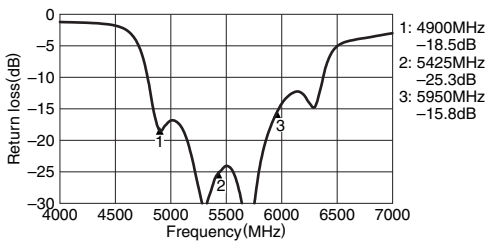
INSERTION LOSS



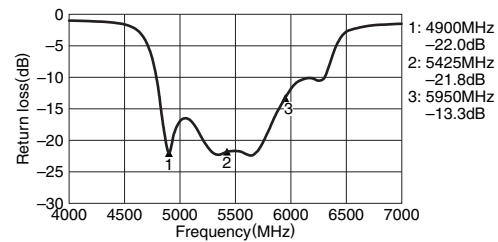
ATTENUATION



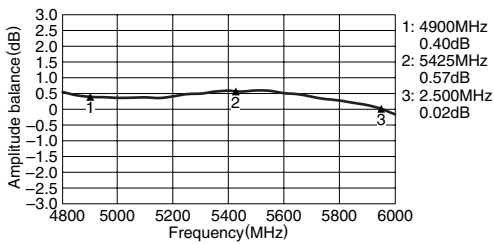
UNBALANCED PORT RETURN LOSS



BALANCED PORT RETURN LOSS



AMPLITUDE BALANCE



PHASE BALANCE

