



I-Storm

PCI ADSL Modem

User's Manual

Contents

CHAPTER 1	1
1.1 I-Storm PCI ADSL Modem Features	1
1.2 Package Contents	1
1.3 Information from ISP	2
CHAPTER 2	4
2.1 Installing I-Storm PCI ADSL Modem	4
2.2 Installing I-Storm PCI ADSL Modem Drivers	6
2.2.1 For Windows 98	6
2.2.2 For Windows Me	9
2.2.3 For Windows 2000	11
2.2.4 For Windows XP	13
CHAPTER 3	17
3.1 I-Storm PCI ADSL LAN Adapter Configuration	18
3.1.1 For Windows 98 / Me	18
3.1.2 For Windows 2000 / XP	21
3.2 I-Storm PCI ADSL WAN Adapter Configuration	24
APPENDIX (PRODUCT SUPPORT)	26

Introduction

1.1 I-Storm PCI ADSL Modem Features

I-Storm PCI ADSL Modem provides the following features:

- ◆ PCI modem for broadband ADSL.
- ◆ Downstream data rate up to 8 Mbps and upstream up to 1 Mbps.
- ◆ Plug and Play for Microsoft Windows 98 (SE), 2000, Me, NT4.0 and XP.
- ◆ Supports NDIS interface for RAS and Dial-Up Networking.
- ◆ Software upgradeable.
- ◆ Supports multiple data encapsulation formats, including PPPoE, PPPoA, IPoA, and RFC1483 bridged or routed.
- ◆ Compliant with PCI Local Bus Specification Revision 2.2
- ◆ Friendly GUI Configuration Program.

1.2 Package Contents

The product package comes with the following accessories:

I-Storm PCI ADSL modem

1. Atlantis I-STORM PCI ADSL Modem
2. One installation CD with drivers and online manual
3. One RJ-11 ADSL telephone cable
4. One Quick Start Guide

1.3 Information from ISP

Before you start installing this device, you have to check with your ISP what kind of service (connection method) is provided such as PPPoE, PPPoA, RFC1483 bridged or routed, IPoA.

Gather the information as illustrated in the following table and keep it for reference.

If your ISP provides PPPoE or PPPoA connection method, please select “I-Storm PCI ADSL WAN Adapter” to install driver. If your ISP provides RFC1483 Bridged or Routed or IPoA, please select “I-Storm PCI ADSL LAN Adapter” to install driver.

PPPoE	VPI/VCI, VC-based/LLC-based multiplexing, Username, Password, Service Name, and Domain Name System (DNS) IP address (it can be automatically assigned from ISP or be set fixed).
PPPoA	VPI/VCI, VC-based/LLC-based multiplexing, Username, Password, and Domain Name System (DNS) IP address (it can be automatically assigned from ISP or be set fixed).
RFC1483 Bridged	VPI/VCI, VC-based/LLC-based multiplexing

RFC1483 Routed	VPI/VCI, VC-based/LLC-based multiplexing, IP address, Subnet mask, Gateway address, and Domain Name System (DNS) IP address (it is fixed IP address).
IPoA	VPI/VCI, IP address, Subnet mask, Gateway address, and Domain Name System (DNS) IP address (it is fixed IP address).

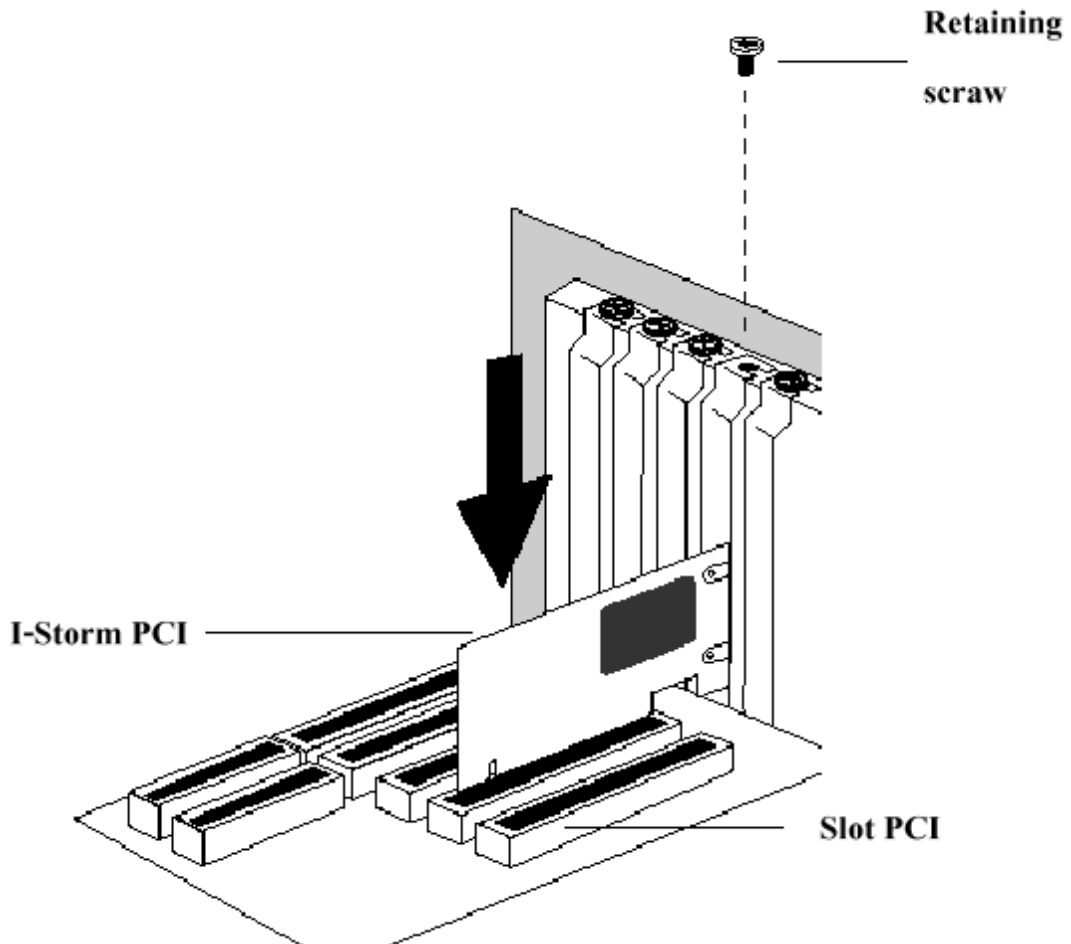
2.1 Installing I-Storm PCI ADSL Modem

Please refer to the following instructions:

First, you need to prepare your phone line and your phone devices at your premises. ADSL and telephone services share the same copper wire to carry their respective signals, a filtering mechanism **must** be used to avoid mutual interference.

1. Shut down your computer and **switch the power off**.
2. **Unplug the power cord** for your computer from the electrical outlet.
3. **Remove the cover** from your systems chassis (see your PC manufacturer's manual).

4. Unscrew the “Retaining Screw” and remove and discard the “Expansion Slot Cover” from any unused PCI slot (PCI slots are usually white in colour).



5. Gently and evenly insert the PCI modem card into your empty PCI slot.

6. Make sure the card is firmly seated, and then secure the card with the “Retaining Screw”

7. Replace the cover of your computer system.

8. Connect the ADSL/phone line to the connector port on the modem card and plug the other end of the cable into your phone line.

2.2 Installing I-Storm PCI ADSL Modem Drivers

2.2.1 For Windows 98

1. Start Windows. After the opening banner, Windows will tell you that the new device has been detected. You will then see the following screen. Click “**Next >**”.
2. In the next window, select “**Search for the best driver for your device**” and click “**Next >**”.

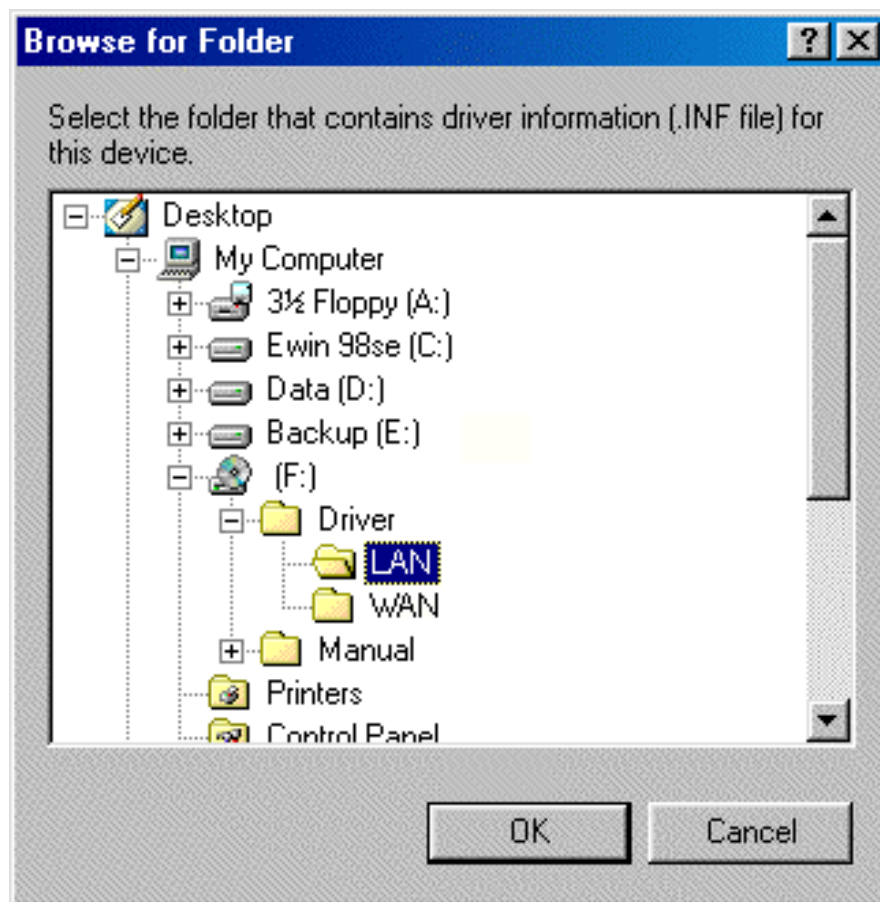


Chapter 2 Installation

3. Insert the installation CD into the CD-ROM drive and check “**Specify a location**”. Click “**Browse...**” to specify the driver directory such as D:\Driver\SO\LAN for installing I-Storm PCI ADSL LAN Adapter or D:\Driver\SO\WAN for installing I-Storm PCI ADSL WAN Adapter. (Please refer *Information from ISP* section for more details.) Click “**OK**” and then “**Next>**” to continue.



I-Storm PCI ADSL modem



4. Continuing through the Wizard, click the “**Next >**” button. Windows will start copying files to your system. Then, click “**Finish**”.
5. You will see the following screen prompting for the path of the Windows source files. Please specify a location. Click “**OK**”.



6. I-Storm PCI ADSL Modem driver is successfully installed and the Status Task Bar will appear in the System Tray.



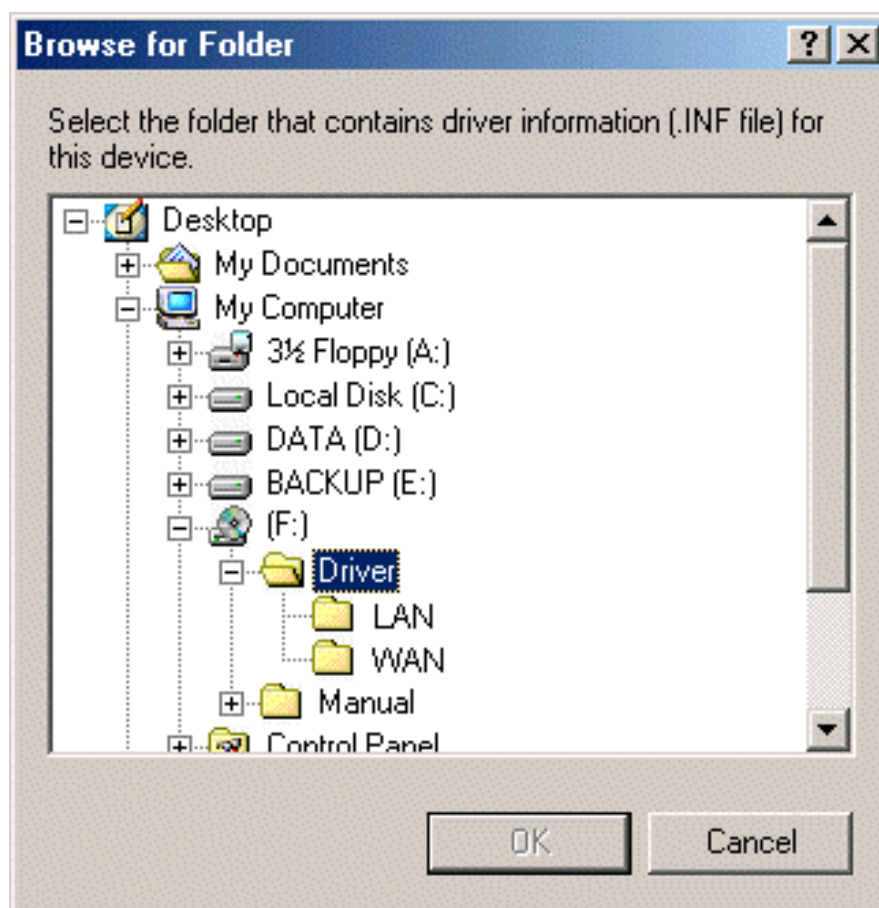
7. **I-Storm PCI ADSL Modem** icon is installed in the Control Panel.

Go to the Device Manager, the “**I-Storm PCI ADSL LAN Adapter**” is under the Network Adapters.

2.2.2 For Windows Me

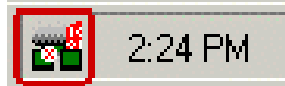
1. Start Windows. After the opening banner, Windows will tell you that the new device has been detected. Select “**Specify the location of the driver**” and click “**Next >**”.
2. Insert the installation CD into the CD-ROM drive and check “**Specify a location**”. Click “**Browse...**” to specify the driver directory such as D:\Driver\SO\LAN for installing I-Storm PCIADSL LAN Adapter or D:\Driver\SO\WAN for installing I-Storm PCI ADSL WAN Adapter. (Please refer *Information from ISP* section for more details.) Click “**OK**” and then “**Next>**” to continue.

I-Storm PCI ADSL modem



3. Continuing through the Wizard, Windows will start copying files to your system. Then, click **Finish**.

4. I-Storm PCI ADSL Modem driver is successfully installed and the Status Task Bar will appear in the System Tray.



5. **I-Storm PCI ADSL Modem** icon is installed in the Control Panel.

Go to the Device Manager, the “**I-Storm PCI ADSL LAN Adapter**” is under the Network Adapters.

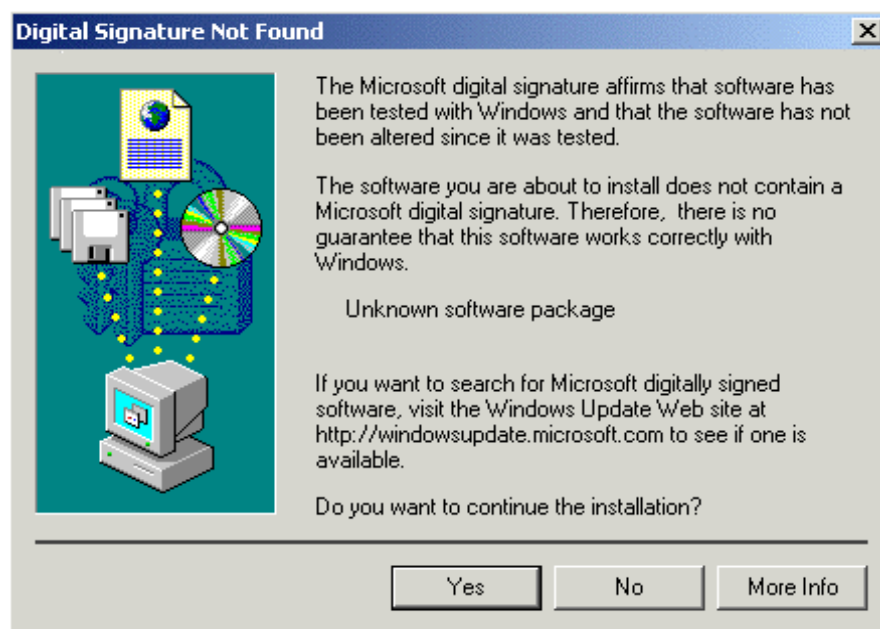
2.2.3 For Windows 2000

1. Start Windows. After the opening banner, Windows will show the new device has been detected. Click “**Next>**”.



I-Storm PCI ADSL modem

2. Select “**Search for a suitable driver for my device**”. Click “**Next>**”. Then, insert the installation CD into the CD-ROM drive. In next window, check “**Specify a location**” and click “**Next>**”.
3. Click “**Browse...**”. In the **Locate File** window, specify the driver directory such as D:\Driver\SO\LAN\CxtCAFEU for installing I-Storm PCI ADSL LAN Adapter or D:\Driver\SO\WAN\CxtCAFEU for installing I-Storm PCI ADSL WAN Adapter. (Please refer *Information from ISP* section for more details.) Click “**Open**” and then “**Next>**” to continue.
4. When windows titled “**Digital Signature Not Found**” appear, press “**Yes**” to continue the installation.



5. Press “**Finish**”.

6. I-Storm PCI ADSL Modem driver is successfully installed and the Status Task Bar will appear in the System Tray.



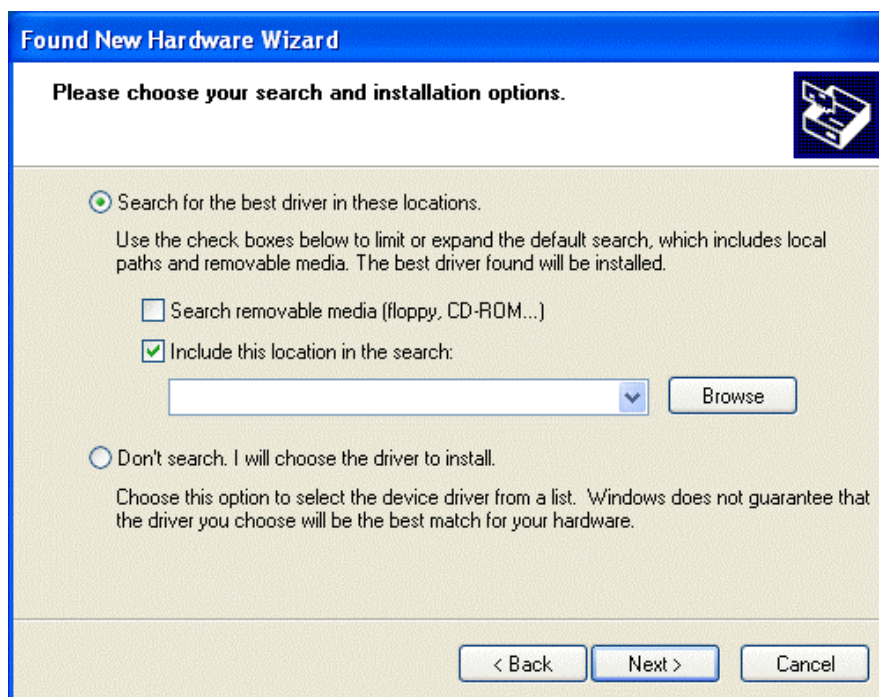
7. **I-Storm PCI ADSL Modem** icon is installed in the Control Panel.

Go to the Device Manager, the “**I-Storm PCI ADSL LAN Adapter**” is under the Network Adapters.

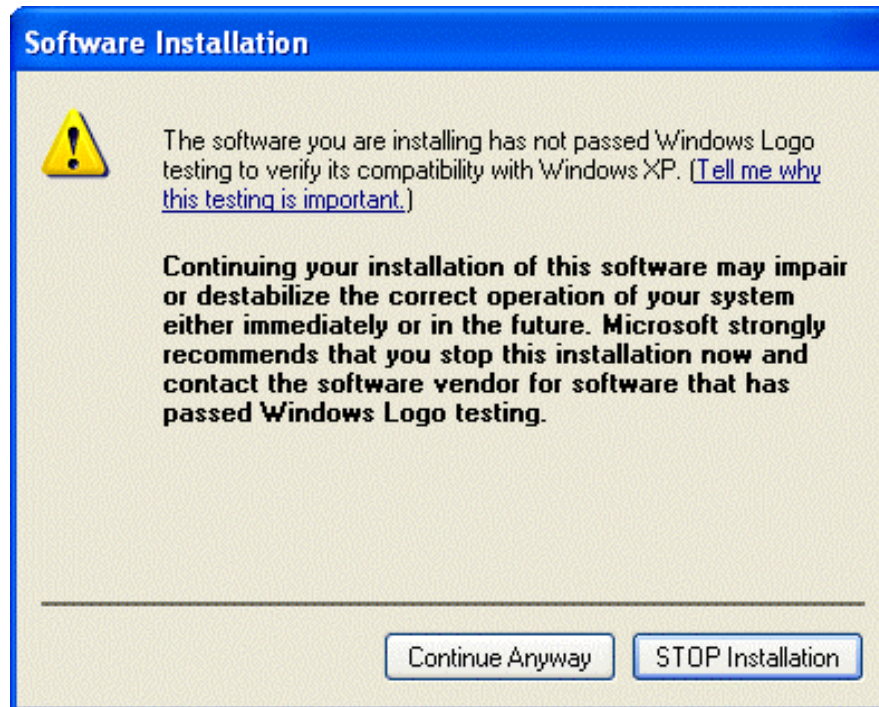
2.2.4 For Windows XP

1. Start Windows. After the opening banner, Windows will tell you that the new device has been detected. Select “**Install from a list or specific location**” and click “**Next >**”.
2. Insert the installation CD into the CD-ROM drive and select “Include this location in the search”. Click “**Browse**” to specify the driver directory such as D:\Driver\SO\LAN for installing I-Storm PCI ADSL LAN Adapter or D:\Driver\SO\WAN for installing I-Storm PCI ADSL WAN Adapter. (Please refer *Information from ISP* section for more details.) Click “OK” and then “**Next>**” to continue.

I-Storm PCI ADSL modem

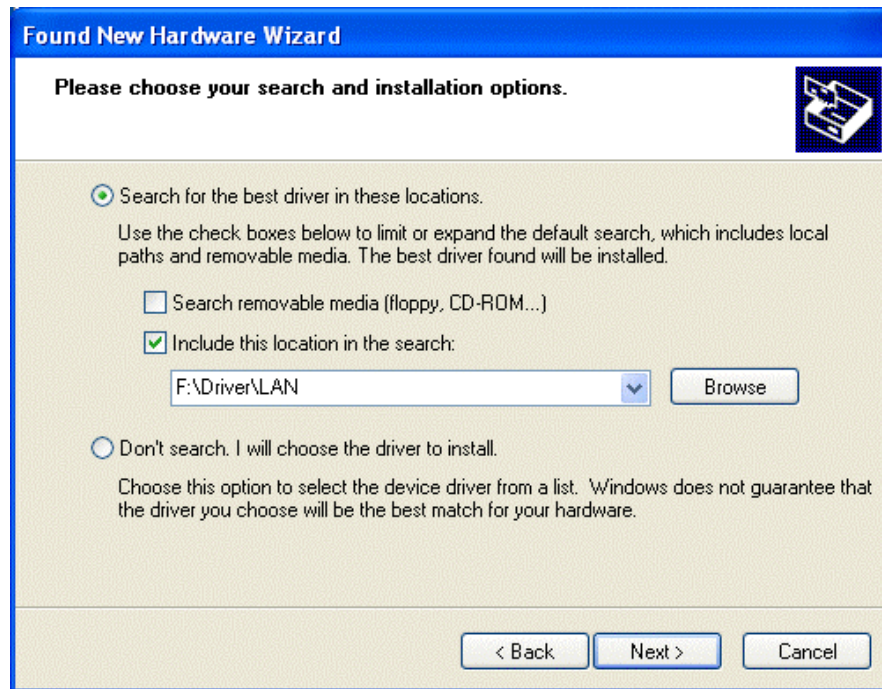


3. When windows titled “**Hardware Installation**” or “**Software Installation**” appear, press “**Continue Anyway**” to go on.



4. Then, click “**Finish**”.
5. Wait a few moments. Windows will show that the new device, I-Storm PCI ADSL LAN (or WAN) Adapter, has been detected. Select “**Install from a list or specific location**”. Click “**Next >**”
6. Click “**Next >**” when the following figure appears.

I-Storm PCI ADSL modem



7. When windows titled “**Hardware Installation**” appears, press “**Continue Anyway**”.

8. Then, click “**Finish**” to end the installation.

9. I-Storm PCI ADSL Modem driver is successfully installed and the Status Task Bar will appear in the System Tray.



10. **I-Storm PCI ADSL Modem** icon is installed in the Control Panel.

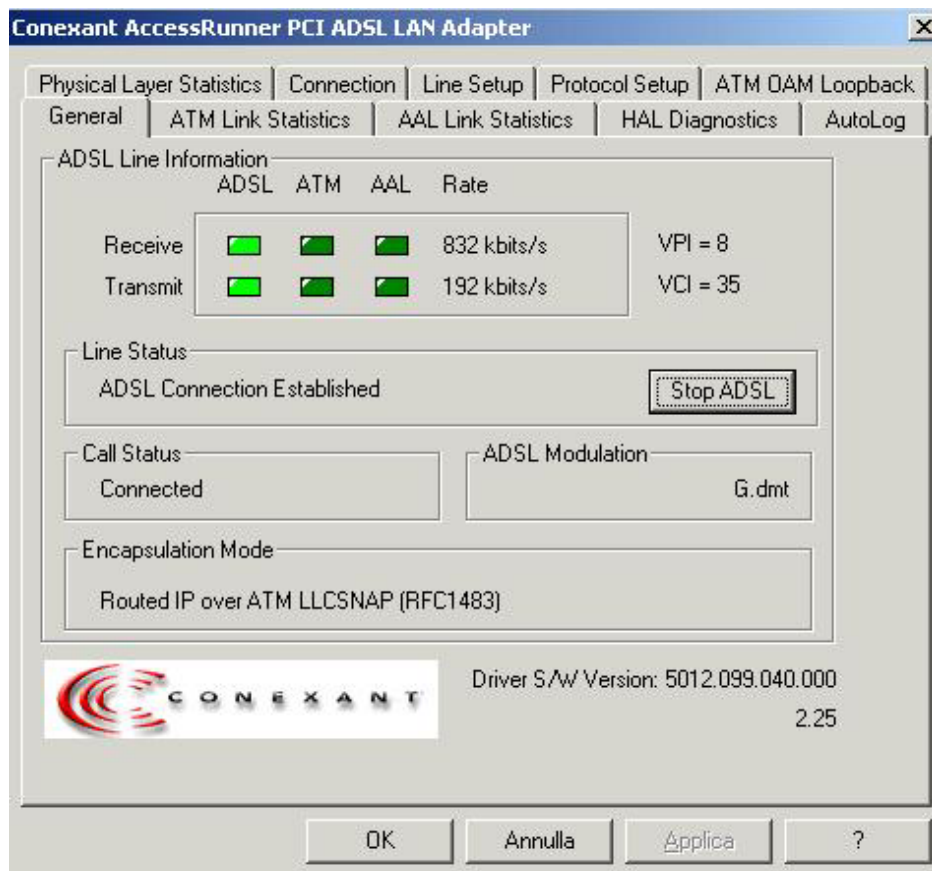
Go to the Device Manager, the “**I-Storm PCI ADSL LAN Adapter**” is under the Network Adapters.

Chapter 3

Configuration

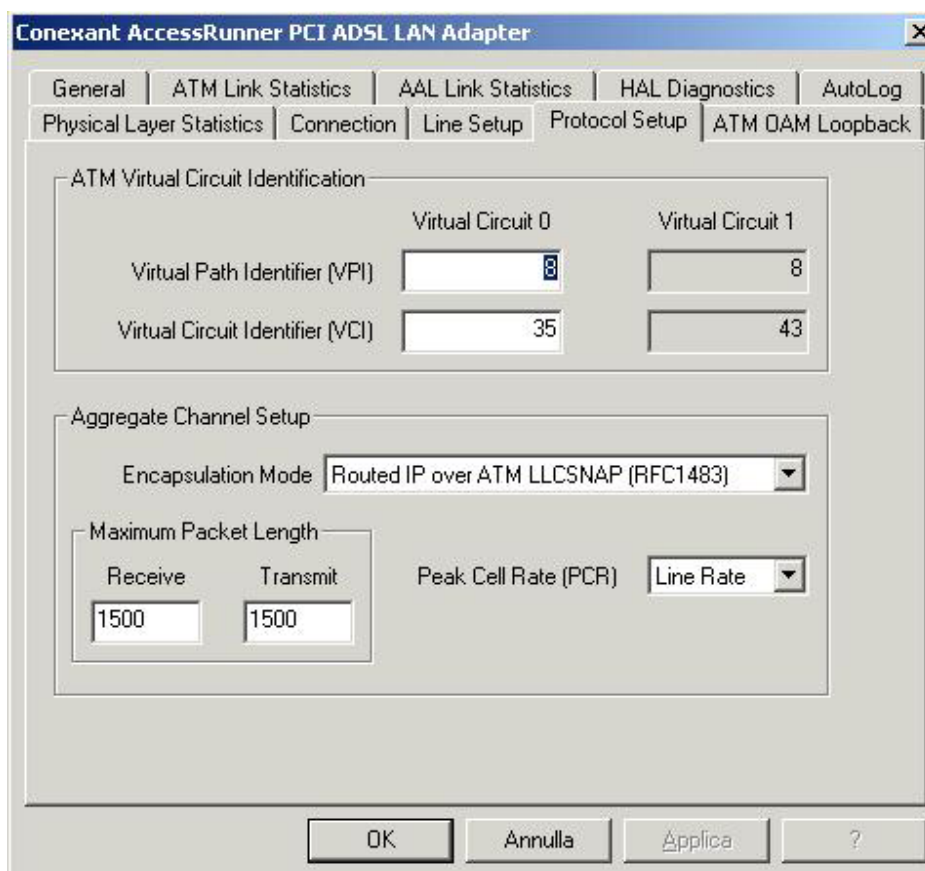
Follow the instructions below to configure your I-Storm PCIADSL Modem.

1. Click **I-Storm PCI ADSL Modem** icon in the Control Panel or **ADSL Configuration** icon on the desktop. The status of ADSL connection will be displayed.



2. Press **[Alt]+[P]** on keyboard, the following figure appears.

I-Storm PCI ADSL modem



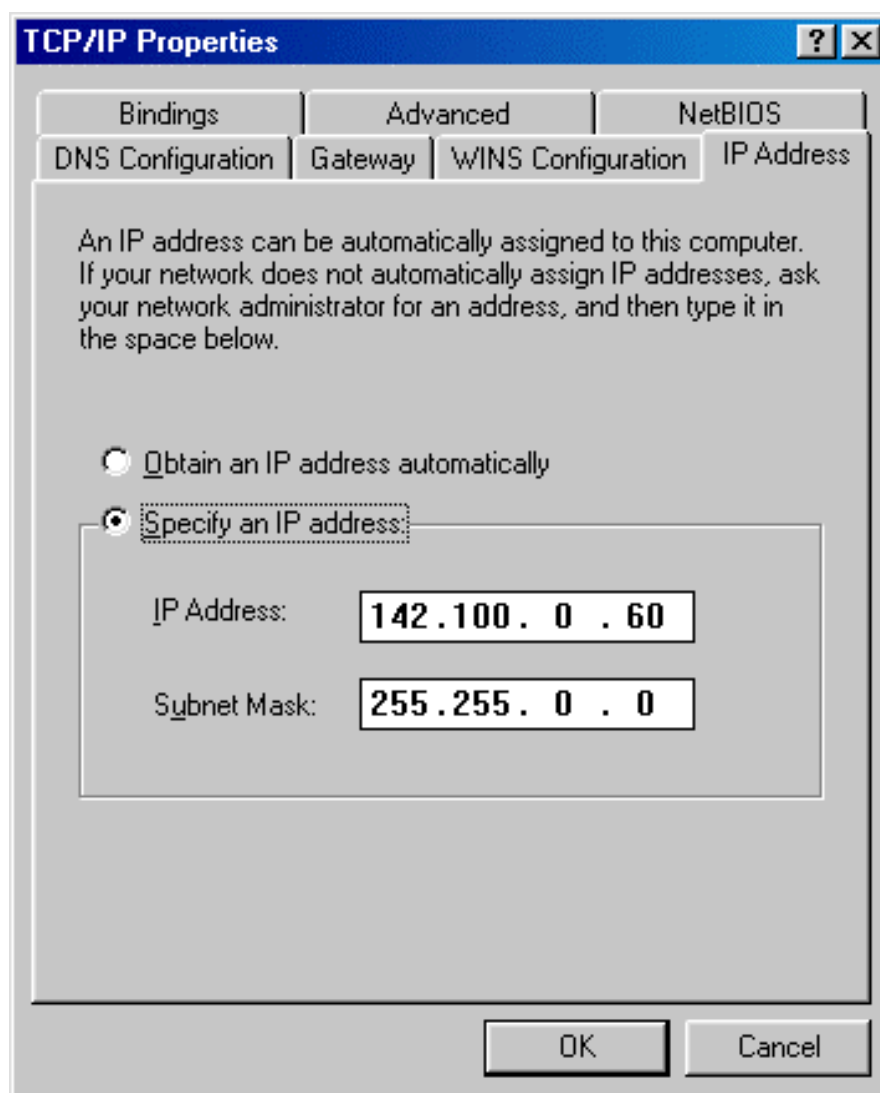
3. Select the **Protocol Setup** tag, please set the value of “VPI”, “VCI” and “Encapsulation Mode”. Then, click “OK”.

3.1 I-Storm PCI ADSL LAN Adapter Configuration

3.1.1 For Windows 98 / Me

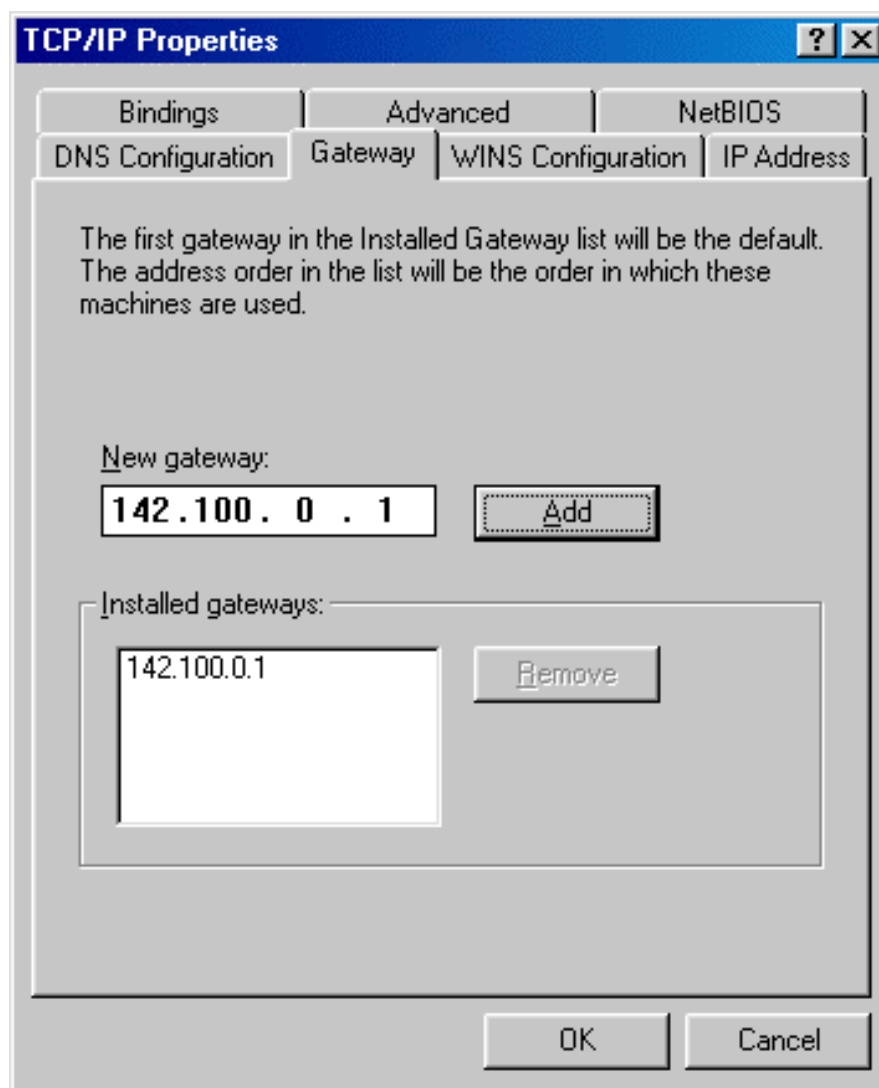
1. Go to **Start / Settings / Control Panel**. In the Control Panel, double-click on **Network** and choose the **Configuration** tab.

2. Select **TCP/IP → I-Storm PCI ADSL LAN Adapter**. Then, click **Properties**.
3. Select the **IP Address** tab. In this page, click the **Specify an IP address** radio button and enter the “IP address” and “Subnet Mask” provided by your ISP.

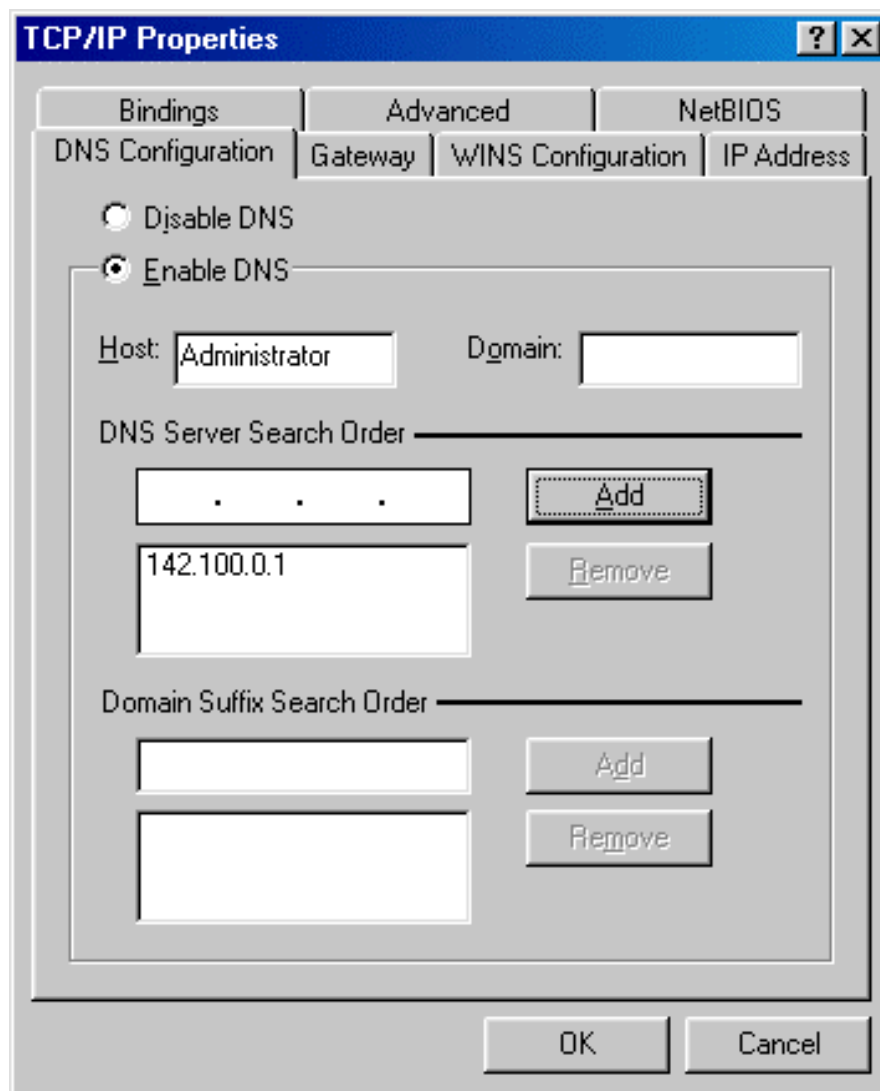


4. Select the **Gateway** tab. Enter the “gateway” provided by your ISP and click **Add**.

I-Storm PCI ADSL modem



5. In the **DNS Configuration** page. Click the **Enable DNS** radio button. Enter the “Host” name and “DNS Server IP address” provided by your ISP. Then, press the **Add** button.



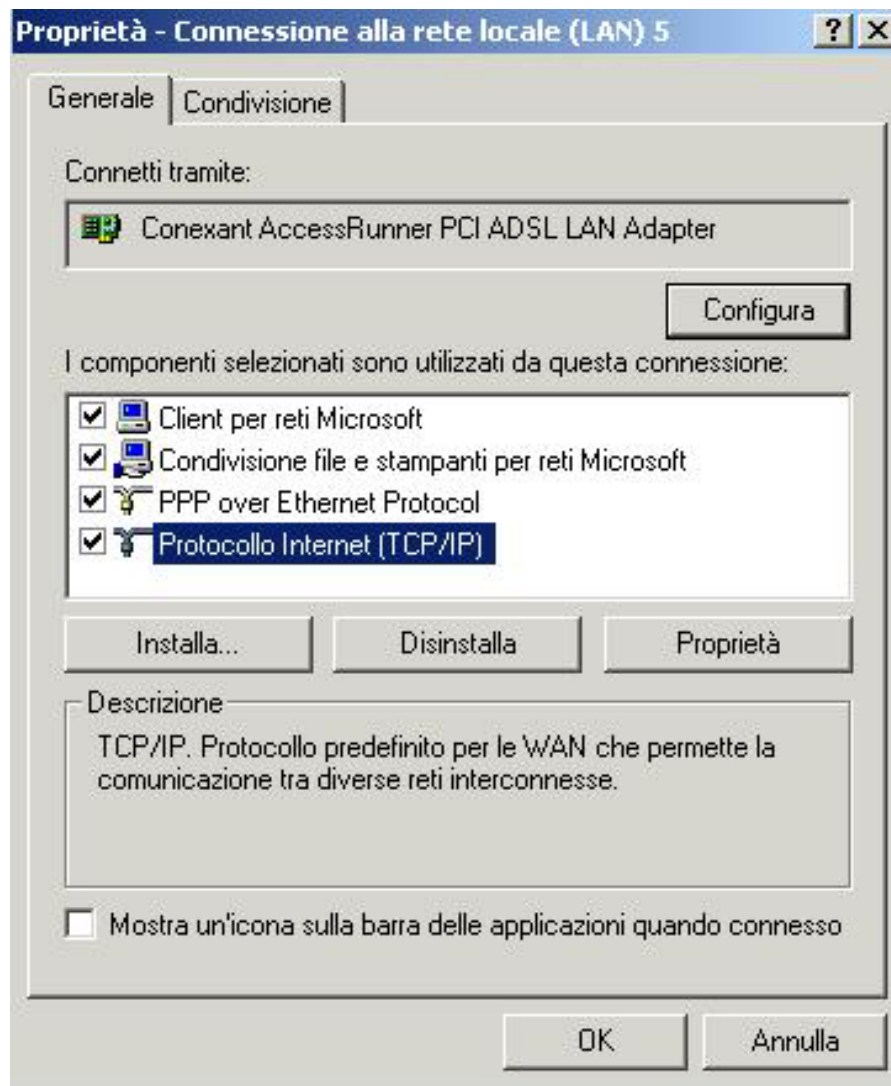
3.1.2 For Windows 2000 / XP

6. Go to **Start / Settings / Control Panel**. In the Control Panel, double-click on **Network and Dial-up Connections**.
7. Right-click on **Local Area Connection** that is using the I-Storm PCI ADSL LAN Adapter and then click "Properties".

I-Storm PCI ADSL modem

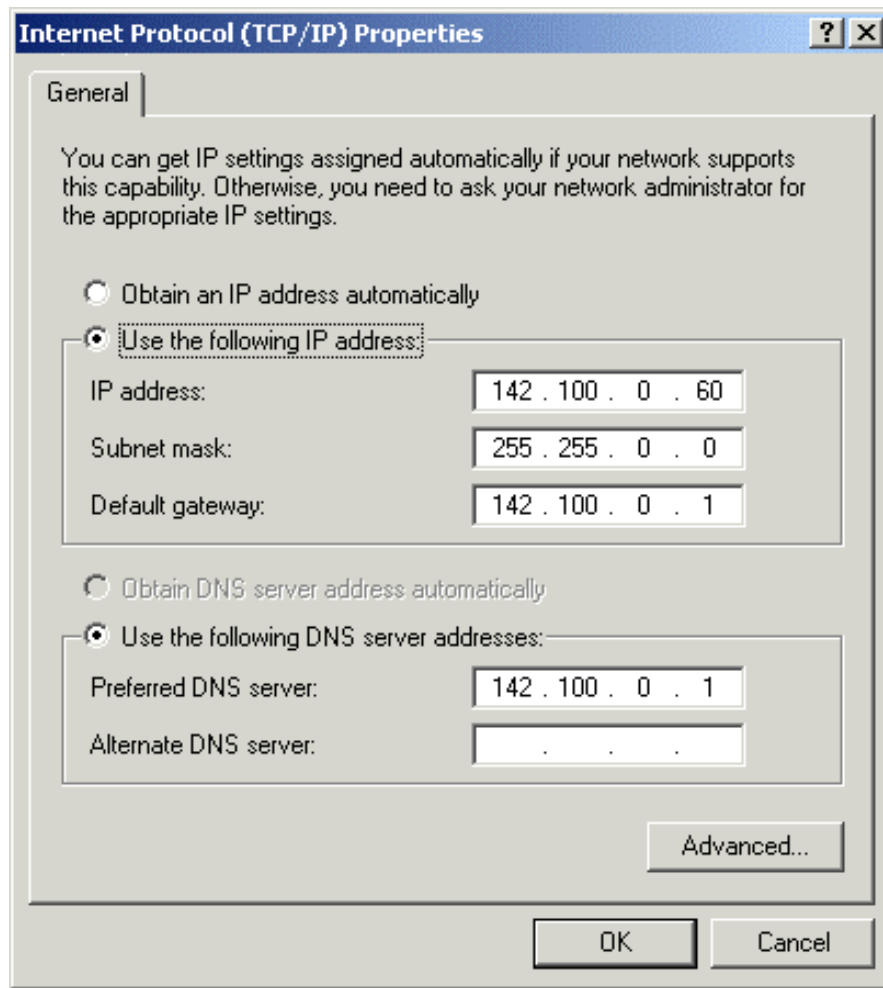


8. Select **Internet Protocol (TCP/IP)**. Then, click “Properties”.



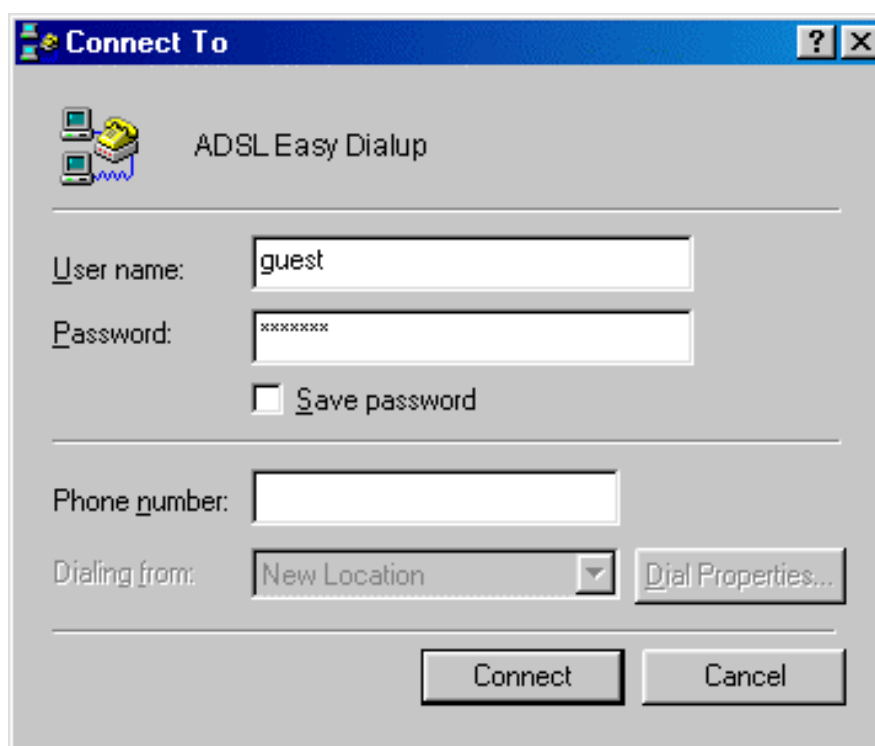
9. Select **Use the following IP address**, and then enter the “IP address”, “Subnet mask”, and “Default gateway” provided by your ISP.

Select **Use the following DNS server addresses** and then enter the provided DNS server IP address.



3.2 I-Storm PCI ADSL WAN Adapter Configuration

1. Click **ADSL Easy Dialup** icon on the desktop. Then, the following window appears. Enter the "Username" and "Password" provided by your ISP. Let the Phone number field be blank.



2. Click **Connect** and get ready to surf the Internet!

Product Support

If you have any problems with the I-Storm PCI ADSL Modem, please contact the dealer where you bought this product. If you have any other questions you can contact the Atlantis Land company directly at the following address:

AtlantisLand spa

Via Gandhi 5 Ing2,Scala A

20017 Mazzo di Rho(MI)

Tel: 02/93906085, 02/93907634(help desk)

Fax: 02/93906161

Email: info@atlantisland.it or tecnici@atlantisland.it

WWW: <http://www.atlantisland.it>