

ZyAIR B-120

Wireless LAN PC Card

Quick Installation Guide

Version 2.00
September 2003



About Your ZyAIR

The ZyAIR is an IEEE 802.11b compliant wireless LAN PC card that fits into any type II PCMCIA slot. Its maximum 11 Mbps data rate, which gives Ethernet equivalent speed, is ideal in the corporate or home environment. Users enjoy the wireless mobility within the coverage area.

Installation Overview

1. Installation Requirements
2. ZyAIR Utility and Hardware Installation
3. Disable Windows XP Configuration Tool
4. Accessing the ZyAIR Utility

1 Installation Requirements

Before installation, make sure you have the following requirements.

- Pentium II 300MHz or above
- A minimum of 6 MB available hard disk space
- A minimum of 32 MB RAM
- A CD-ROM drive
- A PCMCIA type II slot
- Windows 98 SE/ME/2000/XP
- Windows 98 SE users may need the Windows 98 SE CD

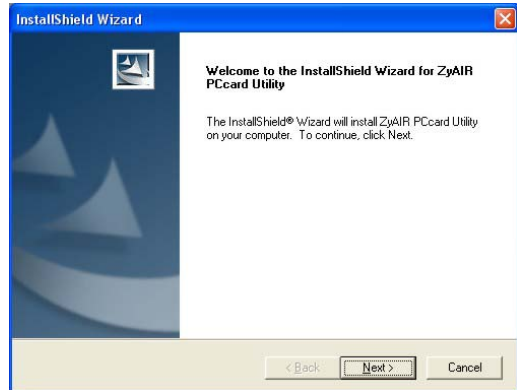
2

ZyAIR Utility and Hardware Installation

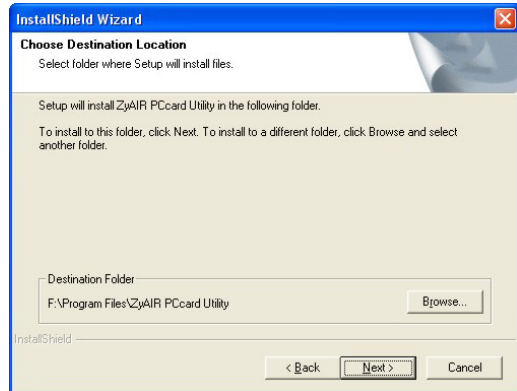
The installation procedures are similar for all supported Windows versions. Windows XP screen shots are shown unless otherwise specified.

DO NOT insert the ZyAIR at this point.

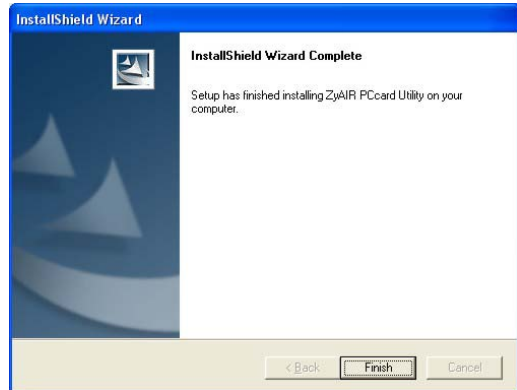
1. Insert the support CD into the CD-ROM drive on your computer. The CD auto runs. Otherwise, locate and double-click on **setup.exe**. A Welcome screen displays. Click **Next**.



2. Click **Next** to accept the default file location or click **Browse** to select an alternate folder.



3. Windows 2000/XP: Click **Finish** to complete the installation.
Windows 98 SE/Me: Click **Finish** to restart the computer.



4. Locate an available PCMCIA slot on the computer.
5. With the pin connectors facing the slot and the LED side facing up, slide the ZyAIR into the slot. The LEDs turn on if the ZyAIR is properly inserted.

Never bend, force or twist the ZyAIR into the slot.



3

Disable Windows XP Configuration Tool

Windows XP includes a configuration tool for wireless devices.

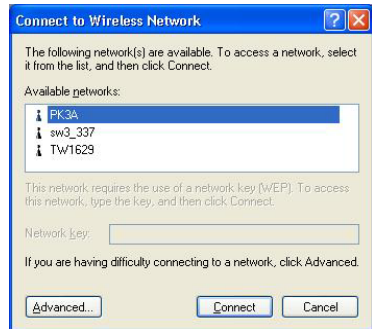
DO NOT use the Windows XP configuration tool and the ZyAIR Utility at the same time. It is recommended you use the ZyAIR Utility to configure the ZyAIR.

Follow the steps below to disable the Windows XP configuration tool.

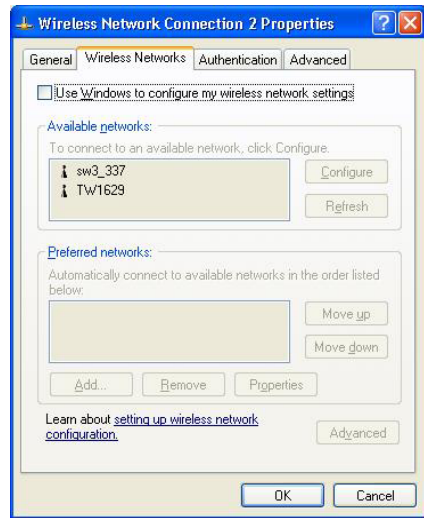
1. Double-click the network icon for wireless connection in the system tray.



2. When a **Connect to Wireless Network** window displays, click **Advanced**.



3. In the **Wireless Network Connection 2 Properties** window, clear the **Use Windows to configure my wireless network settings** check box. Click **OK**.



4 Accessing the ZyAIR Utility

1. After you install the ZyAIR Utility and insert the ZyAIR, an icon appears in the system tray.



If the ZyAIR Utility icon displays, the ZyAIR is installed properly.

2. Double-click on the **ZyAIR Wireless LAN Utility** icon in the system tray to open the ZyAIR Wireless LAN Utility program.
3. Refer to the *ZyAIR User's Guide* to configure the ZyAIR.

LED Display



The following table describes the LEDs on the ZyAIR.

LED	COLOR	STATUS	DESCRIPTION
ACT	Blue	Blinking	The ZyAIR is receiving or sending data.
		Off	The ZyAIR is not receiving or sending data.
LINK	Blue	On	The ZyAIR has a connection to a wireless LAN.
		Blinking	The ZyAIR is connecting to a wireless LAN.
		Off	The ZyAIR is not connected to a wireless LAN or not receiving power.

Troubleshooting

PROBLEM	CORRECTIVE ACTION
Windows does not auto-detect the ZyAIR.	Make sure the ZyAIR is inserted into the computer PCMCIA slot properly and then restart your computer. Check the LEDs on the ZyAIR.
	Perform a hardware scan by clicking Start, Settings, Control Panel and double-clicking Add/Remove Hardware . (Steps may vary depending on the version of Windows). Follow the on-screen instructions to search for the ZyAIR and install the driver.
	Check for possible hardware conflicts. In Windows, click Start, Settings, Control Panel, System, Hardware and then click Device Manager . Verify the status of the ZyAIR under Network Adapter . (Steps may vary depending on the version of Windows).

PROBLEM	CORRECTIVE ACTION
	Install the ZyAIR in another computer. If the error persists, you may have a hardware problem. In this case, you should contact your local vendor.
Cannot start the ZyAIR Wireless LAN Utility.	Make sure the ZyAIR is properly inserted and the LINK LED blinks.
	Check for possible hardware conflicts. In Windows, click Start, Settings, Control Panel, System, Hardware and then click Device Manager . Verify the status of the modem under Network Adapter . (Steps may vary depending on the version of Windows).
	Install the ZyAIR in another computer. If the error persists, you may have a hardware problem. In this case, you should contact your local vendor.
The ZyAIR Wireless LAN Utility displays only three tabs.	When the ZyAIR Wireless LAN Utility displays only three tabs, you are using the Windows XP wireless configuration tool at the same time. Refer to the <i>Disable Windows XP Configuration Tool</i> section to disable the Windows XP wireless configuration tool.