

ZyAIR B-300 11Mbps Wireless LAN PCI Card

Quick Installation Guide

Version : 1.0

Install the ZyAIR B-300 WLAN PCI Card



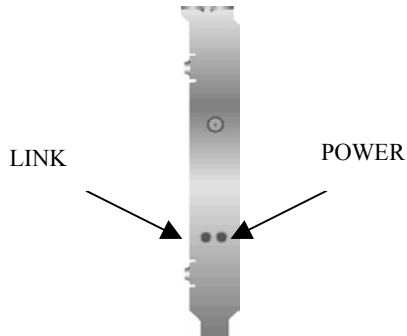
Package Contents

Please ensure that the following items are included in your package. If any items are missing contact your dealer.

- One ZyAIR B-300 Wireless 802.11b PCI Card
- One CD-ROM (includes device drivers, utility and user's manual)
- This quick installation guide
- One external antenna

ZyAIR B-300 Quick Installation Guide

Status LEDs



Side view of the PCI Card from bracket

LED	MEANING
POWER	Indicates that the B-300 is powered on (solid green).
LINK	Indicates link status. The LED lights up (solid green) while the wireless connection is linked. The LED is blinking green while wireless data is transmitting / receiving.

ZyAIR B-300 Quick Installation Guide

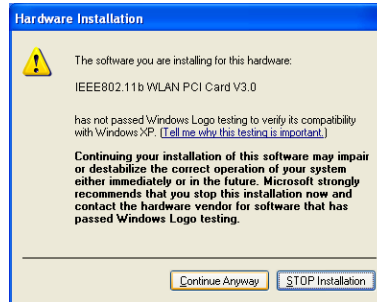
Driver installation for Windows XP

1. Insert the B-300 PCI Card into an available PCI slot on the desktop PC.
2. After Windows XP detects the card, the *Found New Hardware Wizard* window appears. Select **Install the software automatically [Recommended]** and insert the driver CD-ROM into the CD-ROM drive and click **Next** to continue.



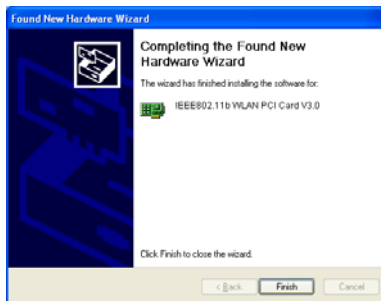
ZyAIR B-300 Quick Installation Guide

- The next screen is the common Windows Logo testing warning screen. This testing is not necessary for the operation of the ZyAIR B-300. Simply click **Continue Anyway** to continue the installation.



ZyAIR B-300 Quick Installation Guide

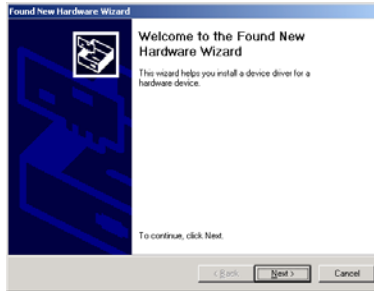
4. Windows has finished installing software for the B-300. Click **Finish** to complete the installation.
5. The system will automatically start to install the Wireless LAN Utility. Please refer to procedures in Chapter 4 of the User's Manual on the CD-ROM.



ZyAIR B-300 Quick Installation Guide

Driver installation for Windows 2000

1. Insert the B-300 PCI Card into an available PCI slot on the desktop PC.
2. After Windows 2000 detects the card, the *Found New Hardware Wizard* window appears. Click **Next** to start the installation.



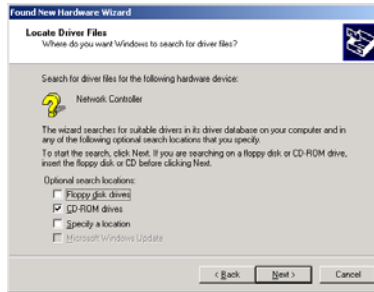
ZyAIR B-300 Quick Installation Guide

3. A screen appears prompting the user to select an installation method. Select **Search for a suitable driver [Recommended]** and click **Next** to continue.



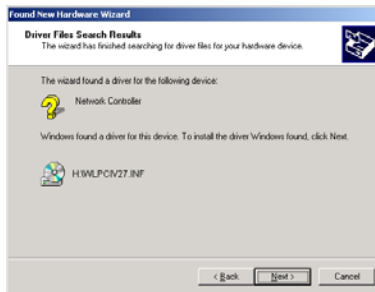
ZyAIR B-300 Quick Installation Guide

4. Ensure that the **CD-ROM driver** is selected and insert the driver CD-ROM into the CD-ROM drive and click **Next** to continue.

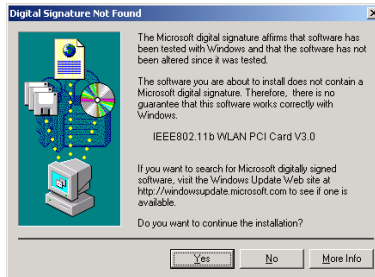


ZyAIR B-300 Quick Installation Guide

- The following screen appears showing the driver search results. Click **Next** to continue the installation.



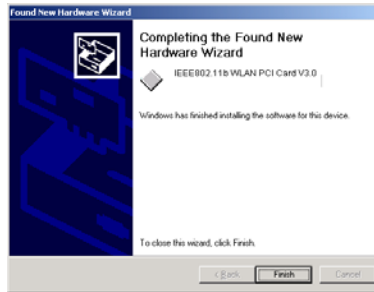
- The following screen appears. Click **Yes** to continue.



ZyAIR B-300 Quick Installation Guide

7. Windows has finished installing the B-300 software. Click **Finish** to complete the installation.

8. The system will automatically start to install the Wireless LAN Utility. Please refer to procedures in Chapter 4 of the User's Manual on the CD-ROM.



ZyAIR B-300 Quick Installation Guide

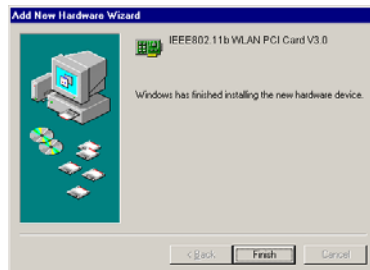
Driver installation for Windows ME

1. Insert the B-300 PCI Card into an available PCI slot on the desktop PC.
2. After Windows ME detects the card, the *Add New Hardware Wizard* window appears. Select **Automatic search for a better driver [Recommended]** and insert the driver CD-ROM into CD-ROM drive and click **Next** to continue.



ZyAIR B-300 Quick Installation Guide

3. Click **Finish** to finish the installation.



ZyAIR B-300 Quick Installation Guide

4. Click **Yes** to reboot the computer.
5. After the system reboot, the Wireless LAN Utility will be installed automatically. The system will then automatically start to install the Wireless LAN Utility. Please refer to procedures in Chapter 4 of the User's Manual on the CD-ROM

