

P-660HW-Dx v2

802.11g Wireless ADSL2+ 4-port Gateway

Quick Start Guide

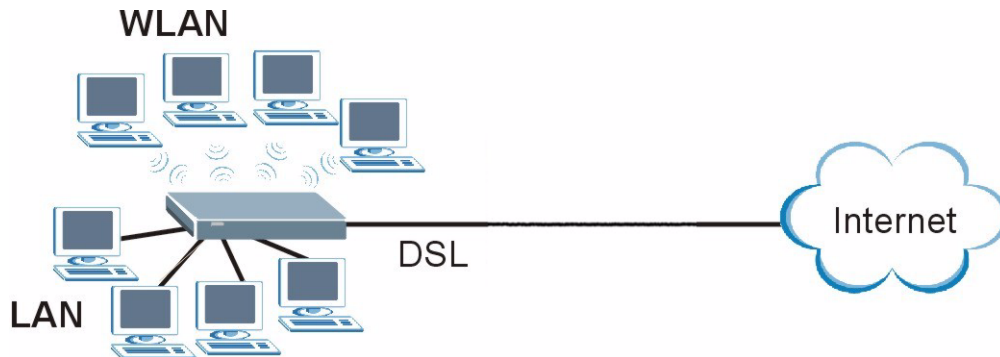
Version 3.40
3/2007
Edition 1

The logo for ZyXEL, featuring the word "ZyXEL" in a bold, blue, sans-serif font. The "Zy" is lowercase and the "XEL" is uppercase. The letters are slightly italicized and have a modern, clean design.

Overview

The P-660HW-Dx v2 is a wireless ADSL router with a four-port built-in switch.

This Quick Start Guide shows you how to use the P-660HW-Dx v2 to connect to the Internet and how to configure the device settings to connect wirelessly.



See your User's Guide for background information on all features.

Quick Login Information

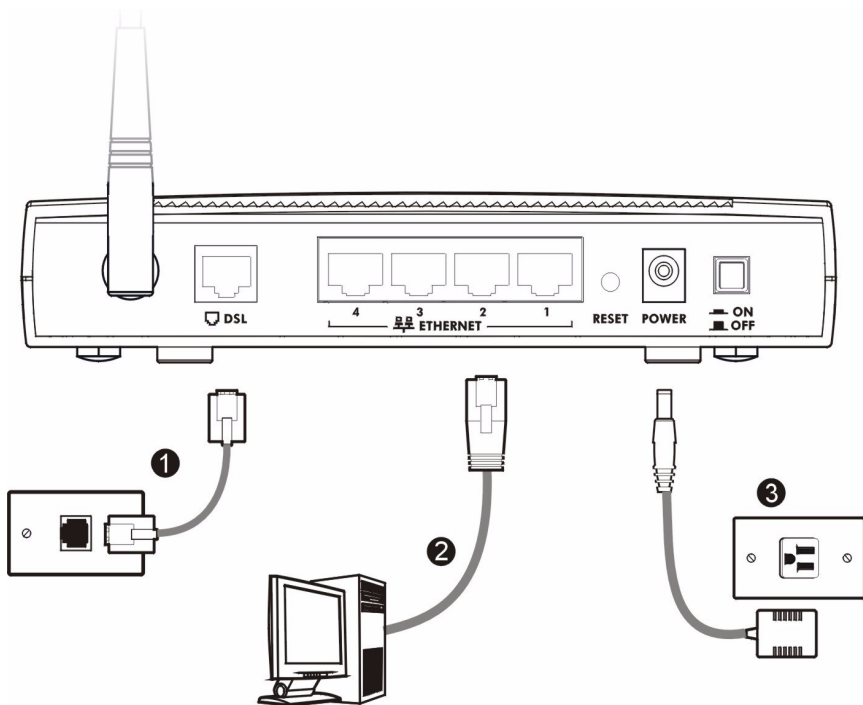
LAN IP address	http://192.168.1.1
default administrator password	1234

How to use the included CD

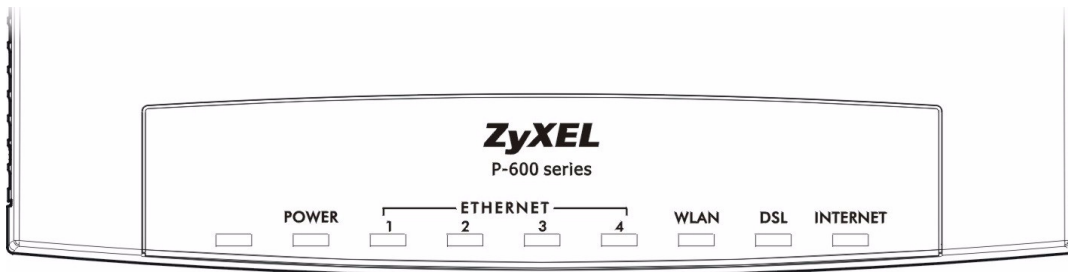
For a multimedia animation of how to make hardware connections, see the installation tutorial on the included CD.

- 1 On the included CD, click **Setup > Multimedia Auto Provisioner**
- 2 At the end of the tutorial, use **Configuration Genie** to set up your P-660HW-Dx v2 to connect to the Internet.

1 Hardware Connections



- 1 DSL:** Use the gray telephone wire to connect your P-660HW-Dx v2's **DSL** port to a telephone jack (or to the modem port on a splitter if you are using one).
- 2 ETHERNET:** Use the yellow Ethernet cable to connect a computer to an **ETHERNET** port for initial configuration and/or Internet access.
- 3 POWER:** Use the included power adaptor to connect an appropriate power source to the **POWER** socket. Make sure the power source is on.
- 4** Push in the **POWER** button.
- 5** Look at the lights on the front panel.



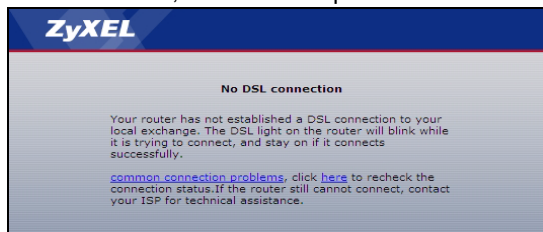
- The **POWER** light blinks while your P-660HW-Dx v2 starts up and stays on once it is ready.
- Each **ETHERNET** light stays on if the corresponding **ETHERNET** port is properly connected and blinks when there is traffic.
- The **DSL** light is on when the P-660HW-Dx v2 has a DSL connection.
- The **INTERNET** light is on when you are able to access the Internet and blinks when the P-660HW-Dx v2 is sending or receiving data. Wait a couple of minutes while your device checks the connection.

If any of these lights are not on, check your connections and inspect your cables for damage. If the lights are still off, contact your local vendor.

2 Internet Connection Setup: Automatic

Use this section to have your P-660HW-Dx v2 automatically detect and set up your Internet connection.

- 1 Open your web browser to a website. Wait while your P-660HW-Dx v2 tries to detect your DSL connection to your ISP. This may take a few minutes.
- 2 After it detects the connection, the DSL light shows green on your device and the Internet light comes on when the Internet is ready for you to use. If you have a PPPoE connection, you will have to enter your user name and password.
- 3 Go to section 3 if you wish to configure your wireless settings.
- 4 If you do not see the connection test screen, or the connection test is not successful, follow the instructions in the screen below, or check your connections and restart the P-660HW-Dx v2. If you still cannot access the Internet, follow the steps in section 3.



3 Internet and Wireless Setup Wizard

Use this wizard to connect to the Internet and configure your wireless settings.

Follow these steps to access the **Internet and Wireless Setup Wizard**:

- 1 Open your browser and enter the following URL address: <http://192.168.1.1>.

2 Type the admin password **1234** (default). Click **Login**.



Note: If your browser does not display the login screen, see **Troubleshooting** on page 10 for details.

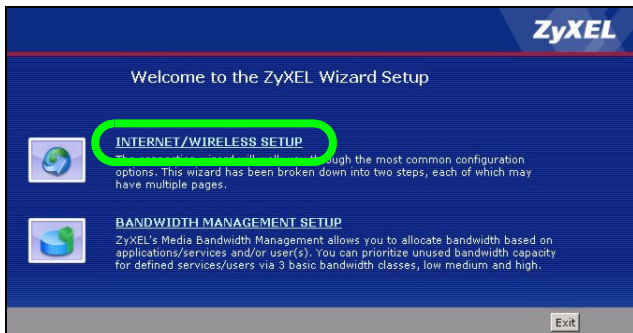
- 3 Type (and retype) a new password and click **Apply**. It is strongly recommended that you change the P-660HW-Dx v2's password and write it down.
- 4 You have to use a new password other than the default password **1234**.
- 5 Enter your new password to log in again.
- 6 Select **Go to Wizard setup**. Then, click **Apply**.

4 Connecting to the Internet Using the Wizard

Use this wizard if you could not automatically connect to the Internet in section 2.

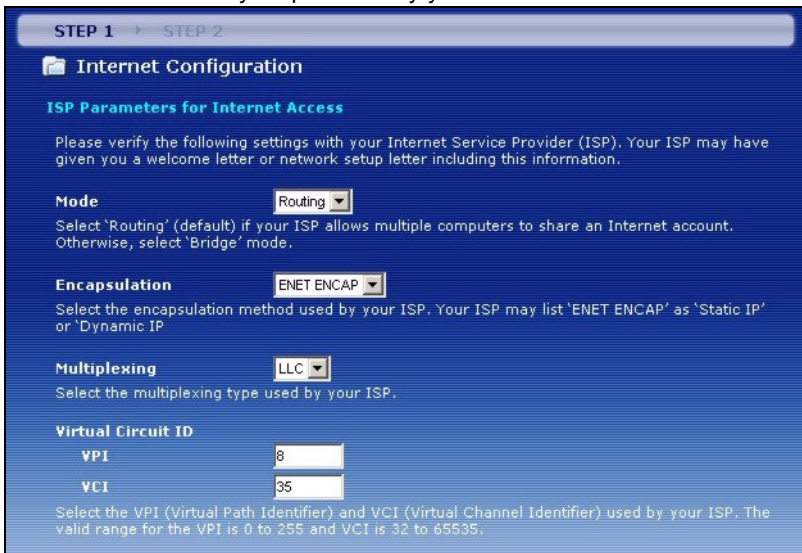
The first step of the **Internet/Wireless Setup Wizard** connects your P-660HW-Dx v2 to the Internet.

1 Click **INTERNET/WIRELESS SETUP** to start the wizard.



- 2 If the Internet Connection test is successful, go to step 7.
- 3 If no DSL connection is detected, check your connections and restart the **Internet/Wireless Setup Wizard**.

- 4 If no ISP settings are detected, click next to go to the following screen. Enter your Internet connection information exactly as provided by your ISP.



The screenshot shows a configuration window titled "Internet Configuration" with a progress bar at the top indicating "STEP 1" and "STEP 2". Below the title is the section "ISP Parameters for Internet Access". A paragraph of text instructs the user to verify settings with their ISP. There are four main configuration sections, each with a dropdown menu and a text description: "Mode" (set to "Routing"), "Encapsulation" (set to "ENET ENCAP"), "Multiplexing" (set to "LLC"), and "Virtual Circuit ID" (with "VPI" set to "8" and "VCI" set to "35"). A final paragraph explains the VPI and VCI values.

STEP 1 > STEP 2

Internet Configuration

ISP Parameters for Internet Access

Please verify the following settings with your Internet Service Provider (ISP). Your ISP may have given you a welcome letter or network setup letter including this information.

Mode

Select 'Routing' (default) if your ISP allows multiple computers to share an Internet account. Otherwise, select 'Bridge' mode.

Encapsulation

Select the encapsulation method used by your ISP. Your ISP may list 'ENET ENCAP' as 'Static IP' or 'Dynamic IP'.

Multiplexing

Select the multiplexing type used by your ISP.

Virtual Circuit ID

VPI

VCI

Select the VPI (Virtual Path Identifier) and VCI (Virtual Channel Identifier) used by your ISP. The valid range for the VPI is 0 to 255 and VCI is 32 to 65535.

- 5 If you do not see this screen, or your ISP has given you Internet access settings not available on this screen, see section 6. If you wish to set up a wireless network, complete the **Internet/Wireless Setup Wizard** before going to this section.
- 6 Next, select either **Obtain an IP Address Automatically** or **Static IP Address**. If you select **Static IP Address** then fill out the required fields based on the information provided by your ISP and click **Apply**.
- 7 If the Internet connection test is successful, either browse to your favorite website or click **Next** on your screen to go to section 5 to configure your wireless settings.

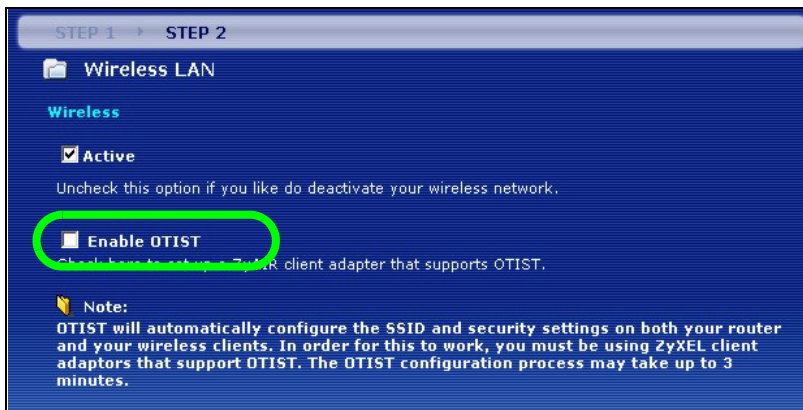
5 Configuring your Wireless Settings

To create a wireless network, the P-660HW-Dx v2 and your wireless computer must all use the same SSID (network name), channel and security settings.

If you do not set wireless security then anyone within range could use your P-660HW-Dx v2 to access your network and the Internet.

Choose WPA-PSK wireless security if your wireless device supports it as it is stronger than WEP. Otherwise choose WEP.

- 1 Select **Active** and click **Next** to continue. It is strongly recommended that **Enable OTIST** is NOT selected. See section 7 for more information.



STEP 1 > STEP 2

Wireless LAN

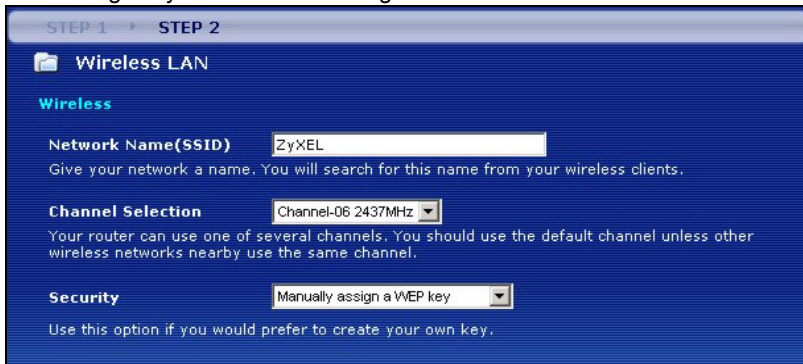
Wireless

Active
Uncheck this option if you like do deactivate your wireless network.

Enable OTIST
Check here to setup a ZyXEL client adapter that supports OTIST.

Note:
OTIST will automatically configure the SSID and security settings on both your router and your wireless clients. In order for this to work, you must be using ZyXEL client adapters that support OTIST. The OTIST configuration process may take up to 3 minutes.

- 2 Configure your wireless settings in the screen. Click **Next**.



STEP 1 > STEP 2

Wireless LAN

Wireless

Network Name (SSID)
Give your network a name. You will search for this name from your wireless clients.

Channel Selection
Your router can use one of several channels. You should use the default channel unless other wireless networks nearby use the same channel.

Security
Use this option if you would prefer to create your own key.

- 3) If you select either **WEP** or **WPA-PSK** security (recommended), then follow the directions to enter the appropriate key. Click **Next** to continue and **Apply** to save your wireless LAN settings.

- 4 Check your configuration and write down your wireless LAN settings for later use. Click **Finish** to complete and save the wizard setup.



- 5 Your Internet is ready for you to use. Open your browser and navigate to your favorite website.

6 Internet Connection Setup Using Advanced Settings

Use this section to set up your Internet connection manually if you do not see the **ISP Parameters for Internet Access** screen when you run the wizard (see section 4, step 4).

- 1 Login again. (Follow steps 1 to 5 in section 3.)
- 2 Select **Go to Advanced setup**. Then, click **Apply**.
- 3 The **Status** screen appears. Click **Network > WAN** in the navigation panel on the left of the screen.



- 4) Enter the information exactly as provided by your ISP. Click **Apply**.

The screenshot shows the 'Internet Connection' configuration window. It has three tabs: 'Internet Connection' (selected), 'More Connections', and 'WAN Backup Setup'. The 'General' section contains the following fields:

- Name: MyISP
- Mode: Routing
- Encapsulation: ENET ENCAP
- Multiplexing: LLC
- Virtual Circuit ID: (empty)
- VPI: 8
- VCI: 35

The 'IP Address' section has two radio buttons: 'Obtain an IP Address Automatically' (selected) and 'Static IP Address'. Below the radio buttons are three text input fields:

- IP Address: 0.0.0.0
- Subnet Mask: 0.0.0.0
- Gateway IP address: 0.0.0.0

At the bottom of the window are three buttons: 'Apply', 'Cancel', and 'Advanced Setup'.

Note: The fields available in this screen depend on the **Mode** and **Encapsulation** you select

5 If you still cannot access the Internet, see **Troubleshooting** and/or contact your Internet Service Provider (ISP) for assistance.

7 Setting Up a Wireless Network with OTIST

7.1 About OTIST

ZyXEL's One-Touch Intelligent Security Technology (OTIST) feature allows you to automatically configure the SSID and WPA-PSK on all OTIST-equipped wireless clients within range of the P-660HW-Dx v2.

Enable OTIST only if your wireless clients support WPA and OTIST.

You should have already configured wireless settings on the P-660HW-Dx v2 using the wizard.

If you select **Disable wireless security** using the wireless wizard, the P-660HW-Dx v2 will create a WPA-PSK automatically.

If you select **Manually assign a WEP key** using the wireless wizard, the P-660HW-Dx v2 will replace the WEP key with a WPA-PSK.

You must enable OTIST on the P-660HW-Dx v2 and all wireless clients within three minutes in any order.

7.2 Enabling OTIST

To enable OTIST on the P-660HW-Dx v2, you can either use the wizard (see section 3) or hold in the **RESET** button (see section 1) for about three seconds. Do not hold the **RESET** button in for too long, as this will reset the P-660HW-Dx v2 to the factory defaults.

To enable OTIST on wireless clients, click **Start** in the **Adapter** screen. The **Setup Key** is 01234567 by default. If you have previously saved a setup key on the P-660HW-Dx v2, use it instead of the default.

For more information, see **Wireless LAN** in the User's Guide.

Troubleshooting

1 If you cannot access the web configurator,

- Your computer may be set to use a static IP address in a different subnet from the ZyXEL device. See the appendix in the User's Guide for information on setting up your IP address.
- If you are using Internet Explorer in Windows XP or Windows Server 2003, make sure you allow pop-up windows, JavaScripts and Java permissions or set the Internet security level lower than **High** in Internet Explorer (in Internet Explorer, click **Tools > Internet Options > Security > Custom Level...**). See the appendix in the User's Guide for more information.

2 If you cannot access the Internet when your computer is connected to the **ETHERNET** port, follow these steps.

A) Check the lights on the front panel. If they are different from what is described in section 1, make sure the P-660HW-Dx v2 is correctly connected. (See section 1.) If the lights are still different, turn off the device, wait a few seconds, and turn it on again.

B) Check you have correctly entered the information your ISP gave you. For example, if your account has a user name and password, make sure you type it correctly. In addition, if you are not sure which encapsulation your ISP uses, contact your ISP. If your ISP did not give you Internet connection information, follow the steps in section 2.

C) If you are using a new Internet account, contact your ISP to make sure it is active.

D) If you still have problems, see **Troubleshooting** in the User's Guide.

If you cannot access the Internet after you take the steps above, either try the following or contact your ISP:

E) Turn your P-660HW-Dx v2 off and on. Open your Internet browser if it is not already open.

Let the P-660HW-Dx v2 complete the DSL connection test (this may take several minutes). See section 2 for details.


If the test is successful, check whether you can access the Internet.

F) If the test is unsuccessful or if you cannot access the Internet, log in to the P-660HW-Dx v2's web configurator (see section 3).

- Click **Network > WAN > Internet Connection**. Ensure that the settings in this screen are the same as those your ISP gave you. If your ISP gave you a static IP address to use, select **Static IP Address** in the **IP Address** section and enter it in the **IP Address** field. If not, select **Obtain an IP Address Automatically**. Click **Apply**.

- Click the wizard icon (). Run the **Internet/Wireless Setup** wizard again. Check whether you can access the Internet.

If you still cannot access the Internet, take the following steps:

- If you are using **Bridge** mode (check **Mode** in the **Network > WAN > Internet Connection** screen) click **NAT > General** and ensure **Active Network Address Translation (NAT)** is not selected. Click **LAN > DHCP Setup** and ensure that **DHCP** is set to **None**. Your ISP gives your computer an IP address directly. If you want to access the P-660HW-Dx v2 again, you need to use a static IP address in the same subnet as your P-660HW-Dx v2 (the P-660HW-Dx v2's default IP address is <http://192.168.1.1>).
- Click the wizard icon (). Run the **Internet/Wireless Setup** wizard again. Check whether you can access the Internet.

If you still cannot access the Internet, contact your Internet Service Provider.

3 If you cannot access the Internet using the wireless network, follow these steps.

- A)** On a computer in the wireless network, open your browser, and go to <http://192.168.1.1>. If you see the login screen in section 3, follow suggestions **A - F** above. If you do not, go to the next step.
- B)** On a computer connected to the P-660HW-Dx v2, make sure your P-660HW-Dx v2 and the computers on your wireless network are using the same wireless and wireless security settings. See the chapter on Wireless LAN in the User's Guide for more information.

Viewing Your Product's Certifications

- 1** Go to www.zyxel.com.
- 2** Select your product from the drop-down list box on the ZyXEL home page to go to that product's page.
- 3** Select the certification you wish to view from this page.