

ZyXEL
Unleash Networking Power

G-102
Quick Start Guide
Version: 1.1

ZyXEL G-102

802.11g Wireless CardBus Card

Quick Start Guide

Version 1.1
Dec 2004

ZyXEL
Unleash Networking Power

Important Note

Federal Communications Commission (FCC) Interference Statement

The 802.11g Wireless LAN Adapter has been tested to the FCC exposure requirements (Specific Absorption Rate).

The equipment complies with FCC RF radiation exposure limits set forth for an uncontrolled environment, under 47 CFR 2.1093 paragraph (d) (2).

This Transmitter must not be co-located or operating in conjunction with any other antenna or transmitter.

Refer to the User's Guide for general FCC statements.

Procedure to View a Product's Certification(s)

1. Go to www.us.zyxel.com
2. Select your product from the drop-down list box on the ZyXEL home page to go to that product's page.
3. Select the certification you wish to view from this page.


About Your ZyXEL G-102

The ZyXEL G-102 is an IEEE 802.11g compliant wireless LAN PC card that fits into any CardBus slot. With the ZyXEL G-102, you can enjoy the wireless mobility within the coverage area. The IEEE 802.11g technology provides greater range and offers transmission rate at up to 54 Mbps.

1. Installation Requirements


Before installation, make sure you have a computer with the following:

- Pentium II 300MHz or above
- A minimum of 6 MB available hard disk space
- A minimum of 32 MB RAM
- A CD-ROM drive
- A CardBus slot
- Windows 98 SE/Me/2000/XP
- Windows 98 SE users may need the Windows 98 SE CD

 **If you install the Funk Odyssey Client software on the computer, uninstall (remove) it.**

2. ZyXEL Utility and Hardware Installation

The installation procedures are similar for all supported Windows versions. Windows 2000 screen shots are shown unless otherwise specified.

 **DO NOT insert the ZyXEL G-102 at this point.**

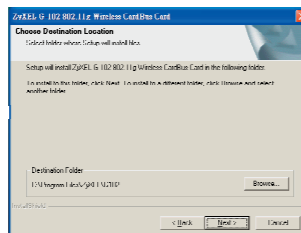
1. Insert the support CD into the CD-ROM drive on your computer. The CD automatically runs. Otherwise, locate and double-click **setup.exe**.

2. Click **Install Utility** to start installation.



3. A welcome screen displays. Click **Next**.

4. Click **Next** to accept the default file location or click **Browse** to select an alternate folder.



5. Click **Finish** to restart the computer.

6. Locate an available CardBus slot on the computer.

7. With the pin connectors facing the slot and the LED side facing up, slide the ZyXEL G-102 into the slot. The LEDs turn on if the ZyXEL G-102 is properly inserted.



Never bend, force or twist the ZyXEL G-102 into the slot.

After you install the ZyXEL Utility and insert the ZyXEL G-102, an icon appears in the system tray.



If the ZyXEL Utility icon displays, the ZyXEL G-102 is installed properly. Refer to the *User's Guide* to configure the ZyXEL G-102.

LED Display

The following table describes the LEDs on the ZyXEL G-102.

LED	COLOR	STATUS	DESCRIPTION
PWR	Green	On	The ZyXEL G-102 is receiving power.
		Off	The ZyXEL G-102 is not receiving power.
LINK	Green	Blinking	The ZyXEL G-102 is receiving or sending data.
		Off	The ZyXEL G-102 is not receiving or sending data.

Troubleshooting

PROBLEM	CORRECTIVE ACTION
Windows does not auto-detect the ZyXEL G-102.	<p>Make sure the ZyXEL G-102 is inserted into the computer CardBus slot properly and then restart your computer. Check the LEDs on the ZyXEL G-102.</p> <p>Perform a hardware scan by clicking Start, Settings, Control Panel and double-clicking Add/Remove Hardware. (Steps may vary depending on the version of Windows). Follow the on-screen instructions to search for the ZyXEL G-102 and install the driver.</p> <p>Check for possible hardware conflicts. In Windows, click Start, Settings, Control Panel, System, Hardware and then click Device Manager. Verify the status of the ZyXEL G-102 under Network Adapter. (Steps may vary depending on the version of Windows).</p> <p>Install the ZyXEL G-102 in another computer. If the error persists, you may have a hardware problem. In this case, you should contact your local vendor.</p>



Corporate Headquarters
 ZyXEL Communications Corp.
 Tel: +886-3-578-3942
 Fax: +886-3-578-2439
 Email: sales@zyxel.com.tw
 http://www.zyxel.com
 http://www.zyxel.com.tw

Denmark
 Tel: +45 39 55 07 00
 Fax: +45 39 55 07 07
 Email: sales@zyxel.dk
 http://www.zyxel.dk

Finland
 Tel: +358-9-4780 8400
 Fax: +358-9-4780 8448
 Email: sales@zyxel.fi
 http://www.zyxel.fi

France
 Tel: +33 (0)4 72 52 97 97
 Fax: +33 (0)4 72 52 19 20
 Email: info@zyxel.fr
 http://www.zyxel.fr

Germany
 Tel: +49 2405 6909 0
 Fax: +49 2405 6909 99
 Email: sales@zyxel.de
 http://www.zyxel.de

North America
 Tel: +1-800-255-4101
 Tel: +1-714-632-0882
 Fax: +1-714-632-0858
 Email: support@zyxel.com
 http://www.us.zyxel.com

Norway
 Tel: +47 22 80 61 80
 Fax: +47 22 80 61 81
 Email: sales@zyxel.no
 http://www.zyxel.no

Spain
 Tel: +34 902 195 420
 Fax: +34 913 005 345
 Email: sales@zyxel.es
 http://www.zyxel.es

Sweden
 Tel: +46 31 744 7700
 Fax: +46 31 744 7701
 Email: sales@zyxel.se
 http://www.zyxel.se