

# MAX<sup>®</sup> MODULES TOOL-LESS

The tool-less MAX module provides category 5e system performance and user-friendly installation features. Our tool-less termination allows all eight conductors to be terminated simultaneously when the termination cap is pressed into place. The compact size provides high-density connectivity in the work area and telecommunications room.



WORK AREA

A smoke-colour tint increases visual identification of the termination cap details



No termination tools required, minimizing termination time

Icons tabs available in 13 colours for colour-coding

Slim design allows outlet to be side-stackable to provide high-density solutions

Outlet opening is compliant with IEC 60603-7 standard

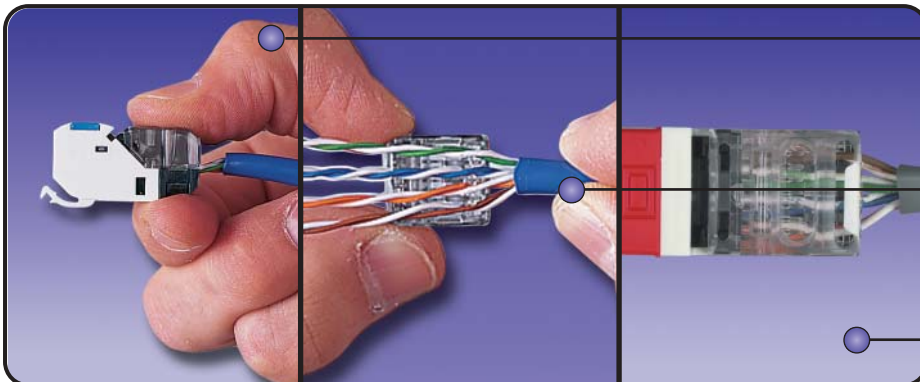
Patented multi-planar™ pair balancing technology



Flexible mounting tab allows installation from front or rear of faceplate and secures module into the faceplate with or without the use of the protective rubber door



MAX 5e modules are now available in many new colours, ideal for colour-coding



Mass terminate all eight conductors by hand or use a single-position S110<sup>®</sup> termination tool in the MAX termination cap

Conductors can be sequentially placed into termination cap, minimizing cable pair untwist and simplifying termination

The termination cap has a large window for viewing terminations

# ORDERING INFORMATION

WORK AREA

## Tool-Less MAX® Modules

### Angled Max modules:

The angled MAX modules provide a "gravity-feed" style design and minimal rear clearance, ideal for modular furniture, raceways and other installations.

MX-C5-(XX) .....  
Angled module with T568A/B wiring



### Flat Max modules:

The flat MAX modules are a flush-mount module suitable for work area or telecommunications room applications.

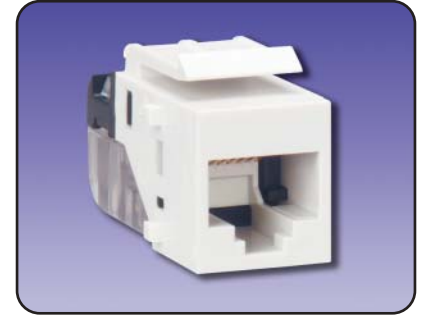
MX-F-C5-(XX) .....  
Flat module with T568A/B wiring



### Keystone Max modules:

The keystone MAX module provides a solution for installations where a standard keystone-style opening exists.

MX-K-C5-(XX) .....  
Keystone module with T568A/B wiring



Use (XX) to specify colour: 01 = black, 02 = white, 03 = red, 04 = grey, 05 = yellow, 06 = blue, 09 = orange, 20 = ivory, 25 = bright white, 80 = light ivory, 82 = alpine white

Add "-D" for optional door for angled and flat versions.

Door colour is white for red, yellow, blue, and orange flat modules; clear for angled.

Ⓢ Add "B" to end of part number for bulk project pack of 100 modules

Flat and angled modules include one colour-matching, one red and one blue icon.

Note: Keystone version is designed for integration with various international mounting products and is not compatible with MAX mounting hardware.

### MAX Outlet Blanks and Doors:

Blank inserts for unused ports and future growth and doors to protect outlets from outside contaminants.

MX-BL-(XX) ..... Blank module, bag of 10  
MX-FD-(XX) ..... Door assembly for flat 6- or 8-position outlets, bag of 20  
MX-AD-(XX) ..... Door assembly for angled 6- or 8-position outlets, bag of 20



Use (XX) to specify colour: 01 = black, 02 = white, 04 = grey, 20 = ivory, 25 = bright white, 80 = light ivory

### Accessories:

CT-ICON-(XX) ..... 25 coloured icon tabs (phone on one side, computer on reverse)  
TAB-(XX) ..... 25 coloured blank tabs  
CT-ICON-LBL\* ..... 10 label sheets for clear tabs that will fit any standard 8.5 x 11 printer, 168 labels per sheet

Use (XX) to specify colour: 00 = clear (TAB-XX only), 01 = black, 02 = white, 03 = red, 04 = grey, 05 = yellow, 06 = blue, 07 = green, 08 = violet, 09 = orange, 20 = ivory, 25 = bright white, 60 = brown, 80 = light ivory

Ⓢ Add "-B" for bulk pack of 100 icons or tags.

\*Visit our web site or contact our Technical Support Department for labeling software



Because we are continuously improving our products, The Siemon Company reserves the right to change specifications and availability without prior notice.

MAX®, S110® and Multi-planar™ are trademarks of The Siemon Company

### For related product information request Spec Sheet(s):

MAX Series Modular Faceplates (PROD-SS-MXF)  
MAX Series Patch Panels (PROD-SS-MXP)  
Termination Tools (PROD-SS-S78)

**Siemon — EMEA HQ & UK**  
United Kingdom  
Tel: +44 (0) 1483 480040

**Siemon — France**  
Paris  
Tel: +33 1 46 46 11 85

**Siemon — Deutschland**  
Frankfurt  
Tel: +49 (0) 69 97168 184

**Siemon — Italia**  
Milano  
Tel: +39 (02) 64 672 209

WWW.SIEMON.COM

ISO 9001  
CERTIFIED

ISO 14001  
CERTIFIED

