



## StitchLink Simple StitchLink II Simple

Wireless PC Adapter

and

Wireless Sewing Machine Adapter

### User's Guide

Thank you for purchasing this product. Please read the instructions before attempting to install the product.

*It is recommended that you do not connect the USB PC Adapter in to your computer's USB slot until the software prompts you to do so (in step #7).*

Make sure that the computer that you are installing the USB PC Adapter in and the location of the device server are within range (90 meters or 300 feet in ideal conditions), and that it is away from metal objects and other devices that generate radio signals (like Bluetooth, Cordless Phones, and Microwave ovens).

#### System Requirements

- A PC with the **Windows XP** operating system that has an **available USB Port**
- At least **5MB of free hard disk space** to install the software
- A **CD-ROM drive** (to load the software)

#### User Registration

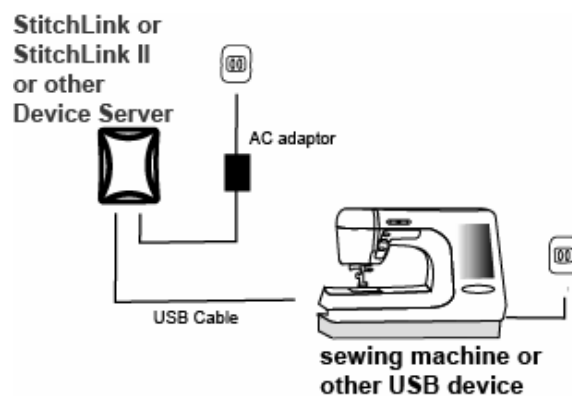
Make sure to fill out the user registration form included on the CD or at [www.silexamerica.com](http://www.silexamerica.com).

#### Package Contents

- SX-Simple USB PC Adapter
- StitchLink or Stitchink II Device Server
- CD-ROM
- Setup Guide

### Connect the StitchLink or StitchLink II to the Sewing Machine

1. With the sewing machine turned off, connect the USB cable from the StitchLink or StitchLink II to the sewing machine USB port.
2. Plug in the AC Adapter from your power outlet to the StitchLink or StitchLink II device server.
3. Turn on the sewing machine



**Note:** This User's Guide is specific to Windows XP Service Pack 2. If you are not using Service Pack 2 the screens may slightly differ.

**Note:** You must be logged in to Windows with administrator privileges in order to install the SX-Simple drivers and software.

### Install the software and connect the USB PC Adapter to your PC

Insert the CD supplied into the CD-ROM drive of your computer. The CD should automatically start and display a menu screen.

**Note:** If the CD does not start automatically, click the **Start** button on the bottom left of your screen, click **Run**, and type **D:/Launch.exe** (where "D" corresponds to the letter associated with your CD-ROM on your PC).

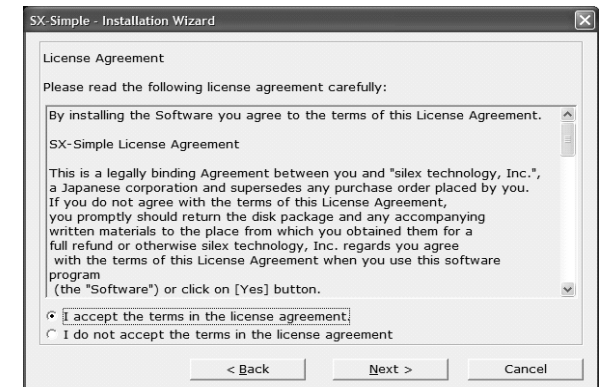
#### 1. Click **Install Software**



#### 2. The welcome screen will appear. Click **Next**



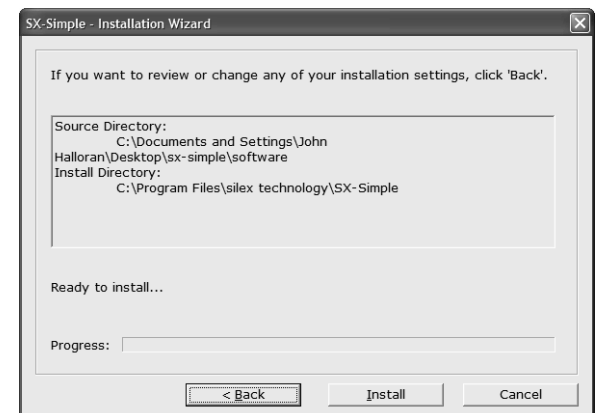
#### 3. If you agree, choose **I accept the terms in the license agreement** and click **Next**



#### 4. Click **Next**. Do not change any of the address settings unless instructed to do so by silex technical support. If you change the address settings you might not be able to connect.



#### 5. Click **Install**



#### 6. Click **Continue Anyway**



7. Insert the PC Adapter into an available USB slot on your PC, and click **OK**



8. The Windows Found New Hardware Wizard will begin when you install your PC Adapter. Choose **No, not at this time** and click **Next**

**Note:** This step will only appear if you have Service Pack 2 installed on your Windows XP computer



9. Choose **Install the software automatically** and click **Next**



10. Click **Continue Anyway**

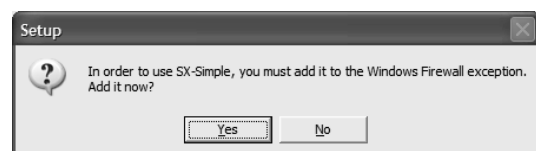


11. Click **Finish** to complete the hardware wizard.



12. Click **Yes** to add this software to your Windows Firewall exceptions. If you click **No** you might not be able to connect.

**Note:** This step will only appear if you have Service Pack 2 installed on your Windows XP computer.



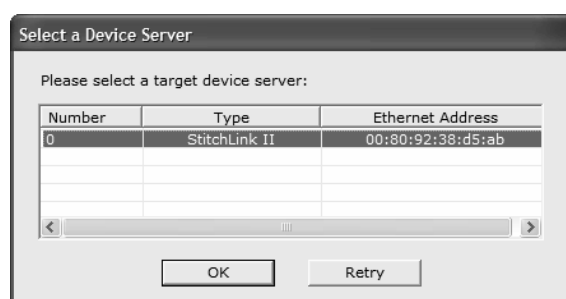
13. Click **Finish** to complete the installation.



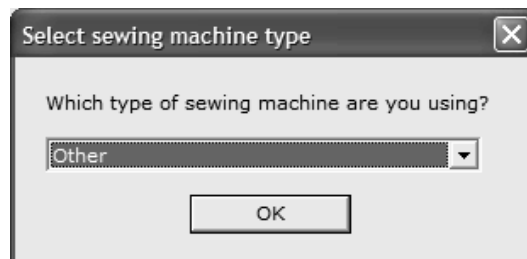
14. The software will automatically set up your wireless connection. Please wait for the software to connect.



15. Choose your Device Server and click **OK**. If more than one device server are in your list, look at the label on the back of the device server and choose the one with the same Ethernet Address (underneath the bar code label)



16. If you are using any device server other than a **StitchLink (for example, StitchLink II or SX-2000WG)**, please go ahead to step 17. If you make a connection to a StitchLink device server, you will be prompted for which sewing machine model type you are connecting to. Choose one and click **OK**.



**Note:** If you choose Babylock or Brother from the drop-down list, it will give you instructions for mapping a drive to the sewing machine memory. Follow the instructions on screen to complete your installation. If you choose any other sewing machine, the software should automatically make a connection.

**Note:** If you are connecting to any other device server (for example, StitchLink II or SX-2000WG), you will not be prompted for which sewing machine model and can go to the next step.

17. You should now be connected to your sewing machine or other device as if you were connected directly via a USB cable connection. Open the software for your Sewing Machine or other device and you should now be able to use all of the same functionality as if you were directly connected.



## Post Installation Notes

After you have installed successfully, you can click **Hide** and the software will minimize down to the task tray.



1. If you get disconnected or can no longer connect to your device, you can right-click the icon, select **Choose Device Server** and highlight your StitchLink or StitchLink II device server again and click **Connect**.
2. If you do not see your StitchLink or StitchLink II device server, check all of your cable connections and click **Search**.
3. If you still do not see any servers in your list, unplug the power to your StitchLink or StitchLink II, hold down the button while you plug in the power. Wait until the LEDs flash, and let go of the button. This resets the unit to factory defaults and you can try to search again.

## Contacts

### Corporate Headquarters

silex technology america, Inc.  
157 West 7065 South  
Salt Lake City, UT 84047 USA  
Phone +1 (801) 748-1199  
www.silexamerica.com

### Technical Support

North and South America  
U.S. 48 contiguous States: +1 (866) 765-8761  
Canada, Alaska, Hawaii, and South America: +1 (801) 748-1199  
E-Mail: support@silexamerica.com

### Europe

silex technology europe GmbH  
Mollsted 5  
40670 Meerbusch Germany  
Phone: +49-(0)2159-6750-0  
www.silexeurope.com

This equipment has been tested and found to comply with the limits for a Class B digital device, pursuant to Part 15 of the FCC Rules. These limits are designed to provide reasonable protection against harmful interference in a residential installation. This equipment generates, uses, and can radiate radio frequency energy and, if not installed and used in accordance with the instructions, it may cause harmful interference to radio communications. However, there is no guarantee that interference will not occur in a particular installation. If this equipment does cause harmful interference to radio or television reception, which can be determined by turning the equipment off and on, the user is encouraged to try to correct the interference by one or more of the following measures:

- Reorient or relocate the receiving antenna.
- Increase the separation between the equipment and receiver.
- Connect the equipment into an outlet on a circuit different from that to which the receiver is connected.
- Consult the dealer or an experienced radio/TV technician for assistance.

This device complies with Part 15 of the FCC Rules. Operation is subject to the following conditions:

- (1) This device may not cause harmful interference.
- (2) This device must accept any interference received, including interference that may cause undesired operation.

