

C-6700WG Setup Guide

silex
technology



Contents

- C-6700WG
- Power Supply
- Stand
- CX User Software
- Rubber Feet
- Setup Guide
- Warranty Booklet

※When the product is placed in the horizontal (side) position, please use the rubber feet provided to prevent the unit from sliding. Place one on each corner.

For User Registration

<http://www.silexamerica.com/register/>

Customer Support

USA : silex technology america, Inc.
E-mail : support@silexamerica.com
URL : <http://www.silexamerica.com/>
Phone: 801-748-1199
US Toll Free Phone: 866-765-8761

Note: A more detailed manual including troubleshooting tips can be found on the CD (Insert the CD, and click on **Manual** when the Autorun menu appears) of this product.

Safety instructions are noted in the **Readme** file on the **CX User Software**. Be sure to read them before using this product.

- Safety instructions regarding the radio waves

Please note the following instructions:

- Do not use this product near medical devices such as a heart pacemaker. The radio wave generated by this product may interfere with the operation of these devices and may threaten one's life.
- Do not use this product near microwave ovens. The radio wave used by microwave ovens may cause interference to this product.

Introduction

Collect wireless LAN setting information

To use this product over the wireless LAN network, you need to configure wireless LAN settings as appropriate for your network. This information needs to be identical to the communication devices such as an access point. Please collect the following information before the setup.

Write down your network configuration	
Wireless mode	Ad hoc (ch.) / Infrastructure
SSID	_____
Encryption method	Encryption method WEP (Open / Shared) / WPA / WPA2
	WEP KEY or Pre-Shared Key _____

Step 1 : Configure the Network

This Setup Guide explains how to configure C-6700WG (this product) to be used in a wireless LAN environment.

Important: The print server only needs to be configured on one computer.

After setup is complete, go to: 'Step 2: Install the Applications' for each computer that will use the printer.

This product has 3 methods of initial configuration as listed below:

- Configuration through a wireless LAN
- Configuration through a wired LAN
- Configuration using a USB memory

This Setup Guide describes how to configure this product through a wireless LAN or wired LAN. For other configuration methods, please refer to the users manual.

Perform the factory default configuration according to the connection between this product and the PC.

- To perform the factory default configuration with a wireless LAN connection, refer to **Configure Through a Wireless LAN**
- To perform the factory default configuration with a wired LAN connection, refer to **Configure Through a Wired LAN**.

If this product has been used in another network, reset it to the factory default settings. For details on the factory default configuration, refer to **To reset to the factory default settings**.

To reset to the factory default settings

1. Remove the AC plug from the electric outlet.
2. Push and hold the button on the print server while re-inserting the AC plug into the electric outlet. Continue holding.
3. The Status LED(Orange) will light when the factory default configuration settings have been restored. Release the push switch.

Configure Through a Wireless LAN

The following item is required:



-USB cable

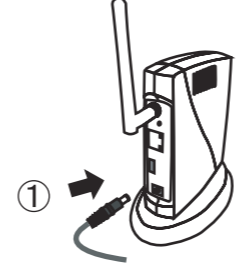
Use to connect this product and a printer. There is no need to purchase a new USB cable when a cable was bundled with the printer to be connected to this product.

1.

Install the printer driver on your PC. For details, refer to the manual that came with your printer.

(Install the printer driver on your PC and make sure you can print with a directly attached USB connection from your computer before using this product.)

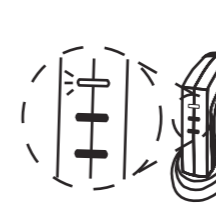
2.



Connect the AC adapter to this product and the power plug to the outlet.

(Do not connect the printer to this product yet. Printer will be connected in '18')

3.

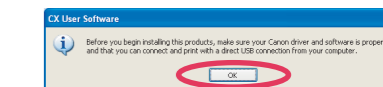


Verify the Wireless LED(Green) blinks.

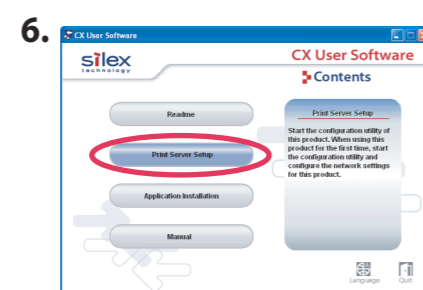
4.

Insert the CD-ROM (CX User Software) into your Windows PC.

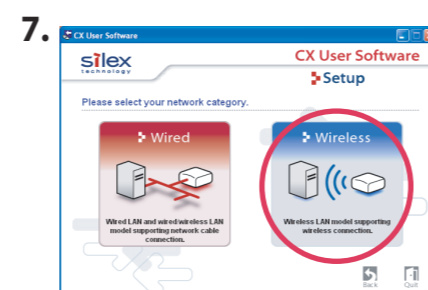
5.



Check the message and click **OK**.

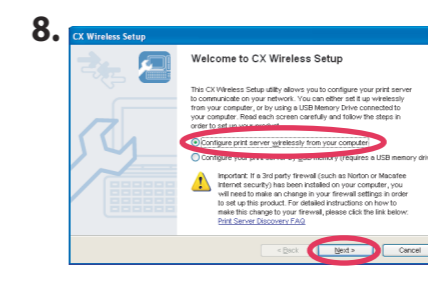


Startup menu is displayed. Click **Print Server Setup**.

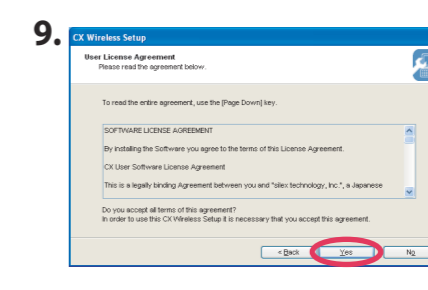


Click **Wireless**.

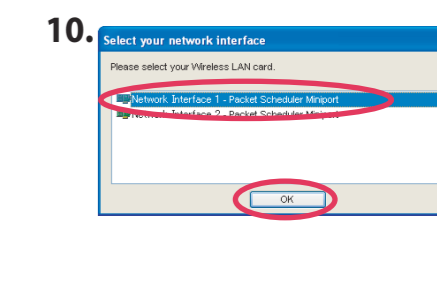
* In a Windows XP (SP2 or higher) or Vista environment, the above message will be displayed. Select **Yes**
* The User Account Control screen is displayed when configuration is performed on Windows Vista. Select **Continue**.



CX Wireless Setup screen is displayed. Check the notes on the screen and select **Configure print server wirelessly from your computer** and click **Next**.

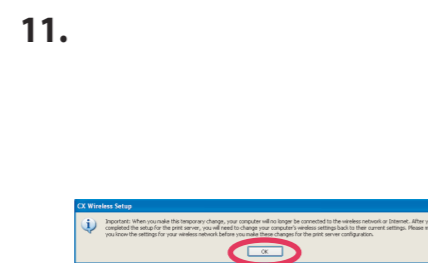


Read the **SOFTWARE LICENSE AGREEMENT** and click **Yes**.



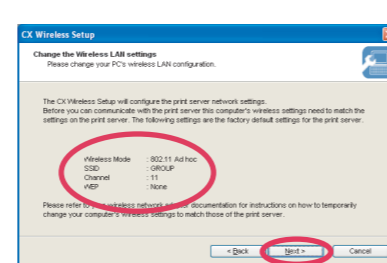
If the screen above is displayed, select the wireless network card to be used and click **OK**.

* This screen is displayed only when two or more network cards are installed on your PC. Select this product and click **Next**.



If the screen above is displayed, you need to change the wireless settings on the PC manually. Read the message and click **OK**.

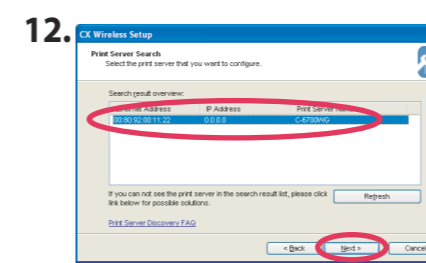
* If you use Windows XP or Vista and the setup utility automatically changed the wireless settings on the PC, this screen is not displayed.



If the wireless settings on the PC differ from the configuration information on the screen above, change the PC wireless settings to match those displayed on the screen. Verify the wireless settings on the PC and click **Next**.

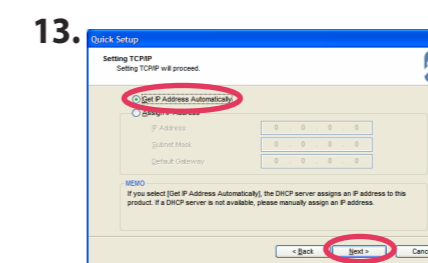
* Please refer to your wireless network adapter documentation for instructions on how to temporarily change your computer's wireless settings to match those of the print server.

Important: When you make this temporary change, your computer will no longer be connected to the wireless network or Internet. After you have completed the setup for the print server, you will need to change your computer's wireless settings back to their current settings. Please make sure you write down the settings for your wireless network before you make these changes for the print server configuration.

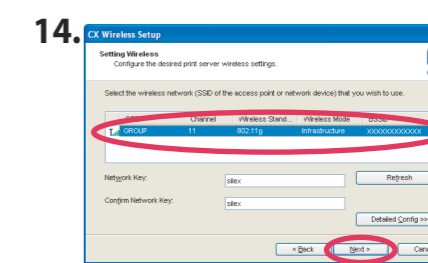


Select a product to be configured and click **Next**.

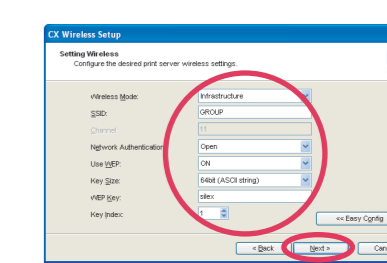
* If your product is not displayed on the list, click **Refresh**.
* If multiple products are displayed in the list, check the **Ethernet Address** on the label of this product.



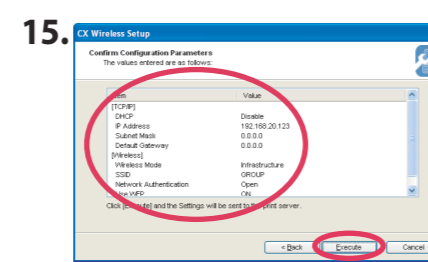
Select **Get IP Address Automatically** and click **Next**.



Select the SSID for your home or office wireless network. If your network is security enabled, enter the network key or password and confirm it. Click **Next**.



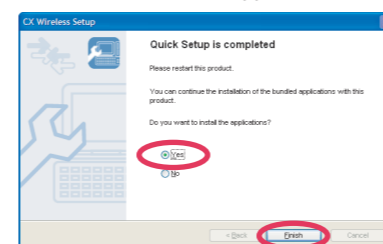
* If the wireless network that you wish to use is not shown in the list, click **Detailed Config** and configure each setting.



Confirm the configuration parameters and click **Execute**.

16.

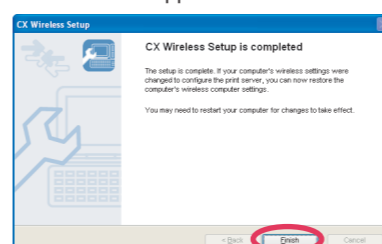
<< If you did not need to change the wireless settings on the PC manually in '11', this screen will appear >>



Select **Yes** and click **Finish**.

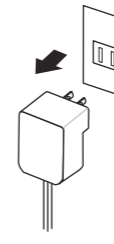
* Application install screen will be displayed as shown in Step 2 - 3.

<< If you changed the wireless settings on the PC manually in '11', this screen will appear >>



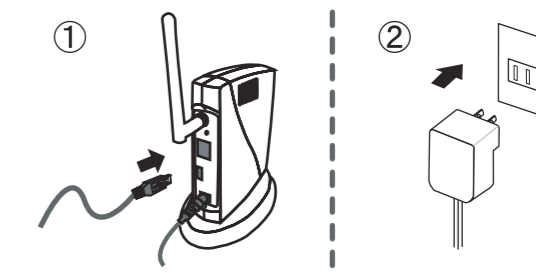
Click **Finish**. Change the wireless settings on the PC (that you have manually changed) back to the previous settings written down in '11'.

17.



To ensure these settings take effect, unplug the AC adapter from the electrical outlet and then plug it back in.

18.



Connect the printer to be shared over the network along with this product via a USB cable and insert the power plug of this product into the outlet.

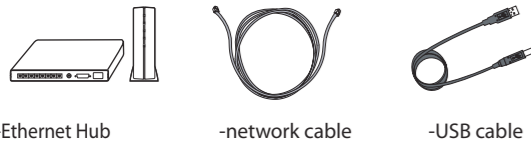
The initial configuration of this product is complete and you do not need to configure the print server any more.

After setup is complete on one computer, each user that wants to use the Canon printer:
Go to
Step 2: Install the Applications on the next page

Note: If you manually changed the wireless settings at '11' on your PC, go straight to '3' in Step 2.

Configure Through a Wired LAN

The following items are required:



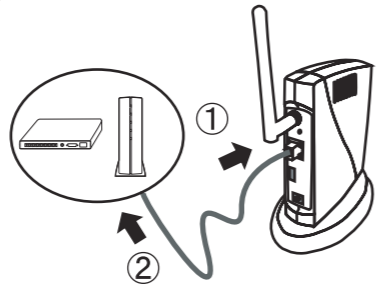
Use to connect this product and a printer. There is no need to purchase a new USB cable if a cable was bundled with the printer to be connected to this product.

1.

Install the printer driver on your PC. For details, refer to the manual that came with your printer.

(Install the printer driver on your PC and make sure you can print with a directly attached USB connection from your computer before using this product.)

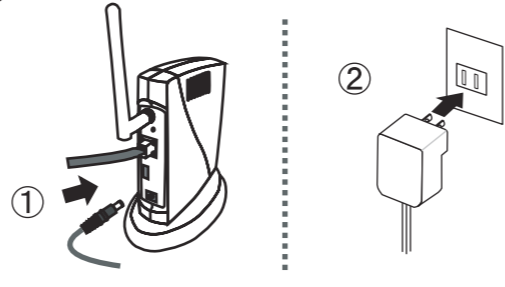
2.



Connect a network cable to this product. Connect the other end of the network cable to a network hub, switch, or router.

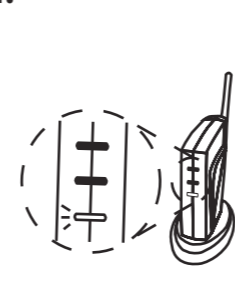
* Use a crossover cable when connecting this product directly to the PC.

3.



Connect the AC adapter to this product and the power plug to the outlet. (Do not connect the printer to this product yet. Printer will need to be connected at '17'.)

4.

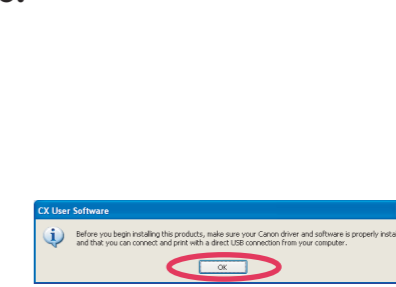


Verify the Link LED (Green) turns on and the Wireless LED (Green) turns off.

5.

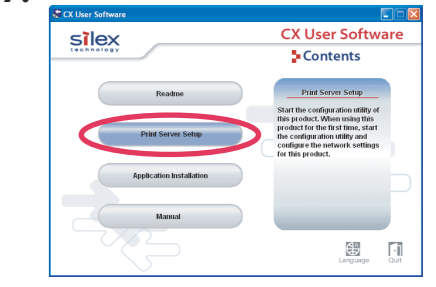
Insert the CD-ROM (CX User Software) into your Windows PC.

6.



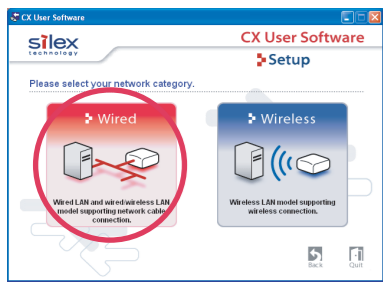
Read the message on the screen and click **OK**.

7.



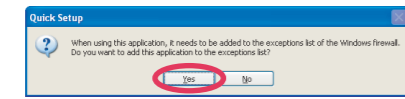
Startup menu is displayed. Click **Print Server Setup**.

8.

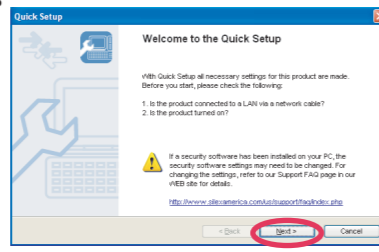


Click **Wired**.

* In a Windows XP (SP2 or higher) or Vista environment, the above message will be displayed. Select **Yes**.
* The User Account Control screen is displayed when configuration is performed on Windows Vista. Select **Continue**.

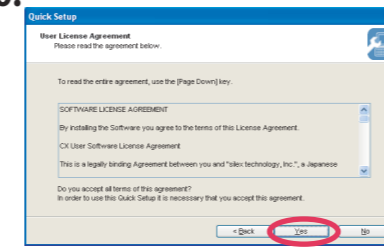


9.



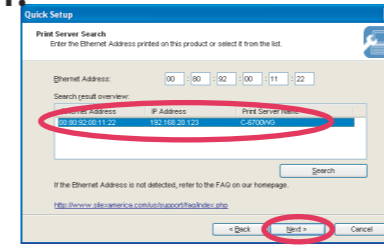
Quick Setup screen is displayed. Read the notes on the screen and click **Next**.

10.



Read the **SOFTWARE LICENSE AGREEMENT** and click **Yes**.

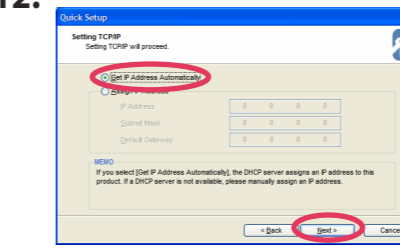
11.



Select a product to be configured and click **Next**.

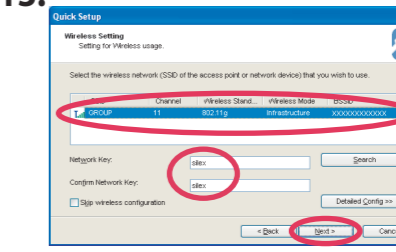
* If your product is not displayed in the list, click **Search**.
* If multiple products are displayed in the list, check the Ethernet Address on the label of this product.

12.



Select **Get IP Address Automatically** and click **Next**.

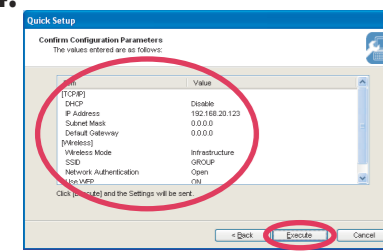
13.



When you will use this product in the wireless network, select the wireless network that you wish to use from the list, enter the wireless network key and click **Next**.

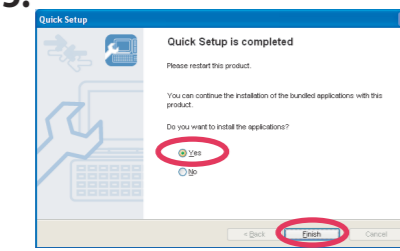
* If the wireless network that you wish to use is not shown in the list, click **Detailed Config** and configure each setting.

14.



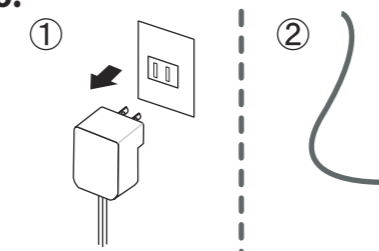
Confirm the configuration parameters and click **Execute**.

15.



Select **Yes** and click **Finish**.

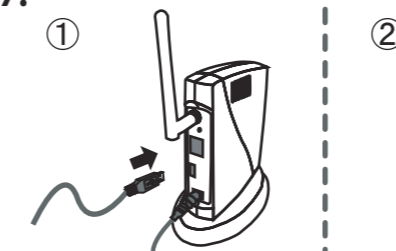
16.



To reflect the wireless configuration, disconnect the power plug from the outlet and unplug the network cable.

* If you are to use this product in a wired LAN environment after you finish the setup, you do not have to unplug the network cable.

17.

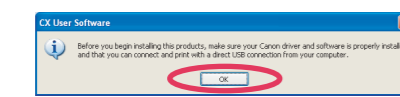


Connect the printer to be shared over the network along with this product via a USB cable and insert the power plug of this product into the outlet.

Step2 : Install the Application

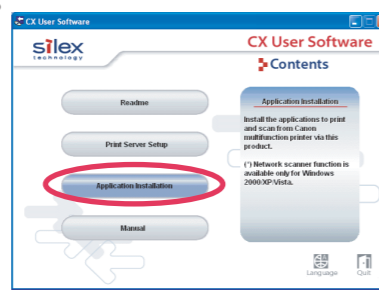
Important: It is necessary to install the applications on each computer that will use the Canon multifunction printer.

2.



Check the message and click **OK**.

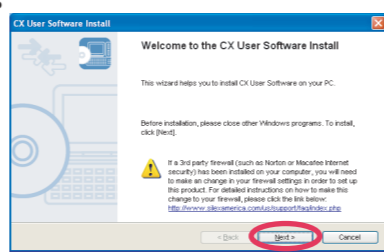
3.



Click **Application Installation**.

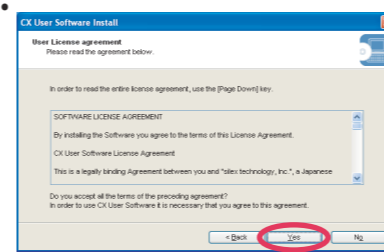
* The User Account Control screen is displayed when configuration is performed on Windows Vista. Select **Continue**.

4.



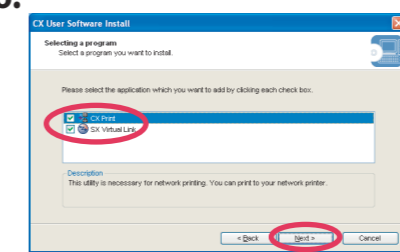
Check the notes on the screen and click **Next**.

5.



Read the **SOFTWARE LICENSE AGREEMENT** and click **Yes**.

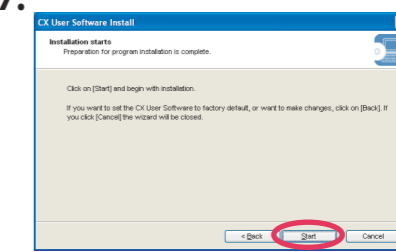
6.



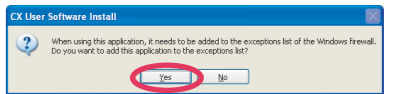
Select the applications you want to install and click **Next**.

* **CX Print** is for printing from your computer.
* **SX Virtual Link** is for scanning and other functions.

7.

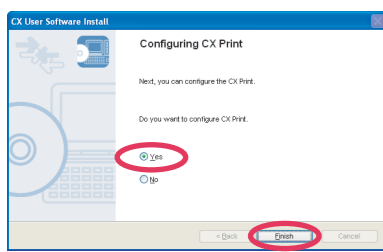


Click **Start**.



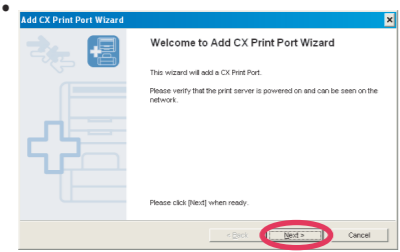
* When in a Windows XP (SP2 or higher) or Vista environment, the above message will be displayed. Select **Yes**.
* The message below is displayed when installing the application on Windows Vista.
(1) Windows Security screen is displayed. Choose **Install**.
(2) The screen to confirm the user adding the application to the Windows Firewall Exemptions list is displayed. Select **Yes**.

8.



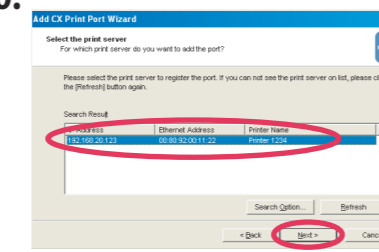
Select **Yes** and click **Finish**.

9.



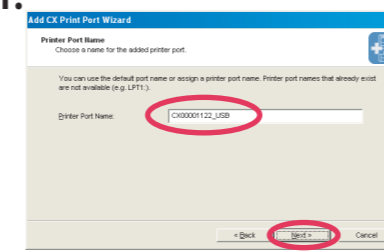
Add CX Print Wizard screen is displayed. Click **Next**.

10.



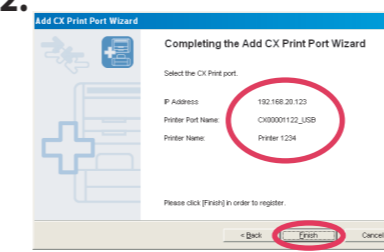
Select the destination print server and click **Next**.

11.



Click **Next**.

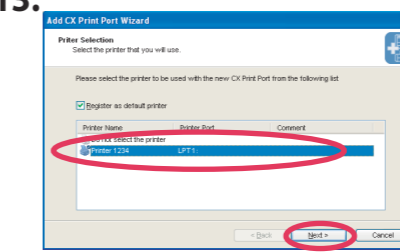
12.



Confirm the configuration parameters and click **Finish**.

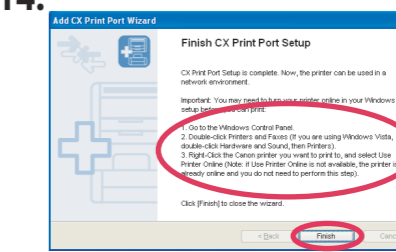
* If the IP address of this product is changed after the port is created, printing from the port will be unavailable.

13.



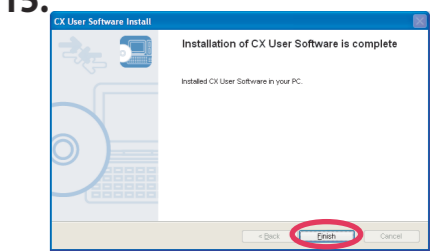
Select the printer you want to use with this product and click **Next**.

14.



Follow the instructions in the message on the screen and click **Finish**.

15.



Click **Finish**. Now, the printer can be used in a network environment.

Step3 : Use the Canon Multifunction Printer

Printing:

The printer is set up as a Windows printer. Just select the appropriate Canon printer when printing.

Scanning and other functions:

1.

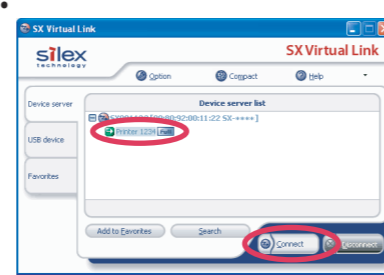
Click start - **All Programs** - **SX Virtual Link** - **SX Virtual Link**.

2.



Confirm 'S' (available).

3.



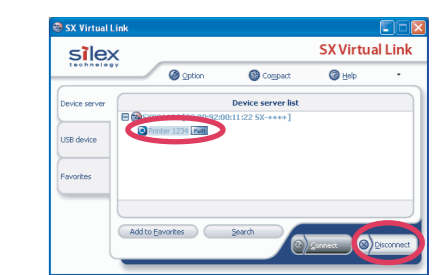
Select the Canon multifunction printer and click **Connect**.

4.



Confirm 'C' (connected). Refer to the operation manual of the Canon multifunction printer to use the scanner, card reader, and fax function.

To disconnect:



Select the Canon multifunction printer and click **Disconnect**.

Important: One person can be connected with SX Virtual Link for scanning at a time. When you are done scanning, you should disconnect from the Canon multifunction printer in SX Virtual Link so it will be available for another PC to be able to connect.