



USER GUIDE



200 Mbps Powerline Ethernet Hybrid Adapter

SMCHPAVH-ETH

AV Copyright

The contents of this publication may not be reproduced in any part of as a whole, stored, transcribed in an information retrieval system, translated into any language, or transmitted in any form or by any means, mechanical, magnetic, electronic, optical, photocopying, manual, or otherwise, without prior written permission.

AV Trademarks

All product, company, and brand names are trademarks or registered trademarks of their respective companies. They are used for identification purpose only. Specifications are subject to be changed without prior notice.

AV FCC Interference

This equipment has been tested and found to comply with the limits for a Class B digital device pursuant to Part 15 of the FCC Rules. These limits are designed to provide reasonable protection against radio interference in a commercial environment. This equipment can generate, use and radiate radio frequency energy and, if not installed and used in accordance with the instructions in this manual, it may cause harmful interference to radio communications. Operation of this equipment in a residential area is likely to cause interference, in which case the user, at his own expense, will be required to take whatever measures are necessary to correct the interference.

Package Contents

Before installing the EZ Connect Powerline Ethernet Hybrid Adapters, verify that you have the items listed under "Package Contents". Also be sure that you have the necessary cabling. If any of the items are missing or damaged, contact your local SMC distributor.

- EZ Connect 200 Mbps Powerline Ethernet Hybrid Adapter
- Powerline cord
- One CAT-5 Ethernet cable
- Documentation CD
- Quick Installation Guide
- Warranty Information Card

If possible, please retain the carton and original packing materials in case there is a need to return the product.

System Requirements

An Ethernet-enabled device, such as a PC or game console system
Windows-based PC to use the EZ Configuration Utility.
CD-ROM*

Thank you on the purchase of the SMC HomePlug AV Hybrid Bridge (SMCHPAVH-ETH). Most of us don't enjoy buying long and expensive Ethernet cables or pulling the cables from one place to another, but the SMC HomePlug Bridge is one of the easiest ways to enjoy home or small business networking. Users can now experience a total network solution with the SMC HomePlug Bridge. The SMC HomePlug Bridge operates on the HomePlug Powerline AV standard, providing up to 200Mbps bandwidth over home AC wiring or home coax cable. The home power lines are the most pervasive medium in households with multiple outlets in every room. With the additional ability to bridge longer distances over coax, the hybrid power line and coax coverage will cover not only homes, larger buildings as well. The HomePlug Bridge allows multiple home networked devices to share internet connection, printers, files, play games, and distribute HD content without any additional wiring.

The installation of the SMC HomePlug Bridge only requires a 10/100Mbps Ethernet connection. This makes the HomePlug Bridge compatible with any device including Media Players, Set top boxes, TiVos, Gaming Consoles, Mac, Windows, Linux, and UNIX machines.

For security, all SMC HomePlug devices are equipped with 128-bit encryption. The private home power grid and coax lines plus encryption makes the HomePlug Bridge significantly more secure than competing technologies.

The SMC HomePlug Bridge is the best solution for No-New-Wires home Networking. With easy Plug and Play installation, and the reliability of SMC Ethernet's products, the SMC HomePlug Bridge is the best solution for high speed networking.

The SMC HomePlug Bridge can be installed without any configuration. However, for advanced configuration, please download the advanced utility from www.smc.com

- Stand-Alone Unit Attaches Directly to Broadband Device and Home Powerline Network for seamless Integration
- No New Wires Approach
- Up to 200Mbps PHY Data Rate on Power line
- Co-exists with 14/85mbps HomePlug V1.01
- Compact, Wall-hugging design
- Power Packet Utility provides unsophisticated users a way to graphically manage their HomePlug network

A V

Front Face



POWER PL ETH

Power - ON if device is receiving power

PL - ON if HomePlug is Connected
- Blink if HomePlug Activity

ETH - ON if Ethernet is Connected
- Blink if Ethernet Activity

A V

Rear Face



Power Plug

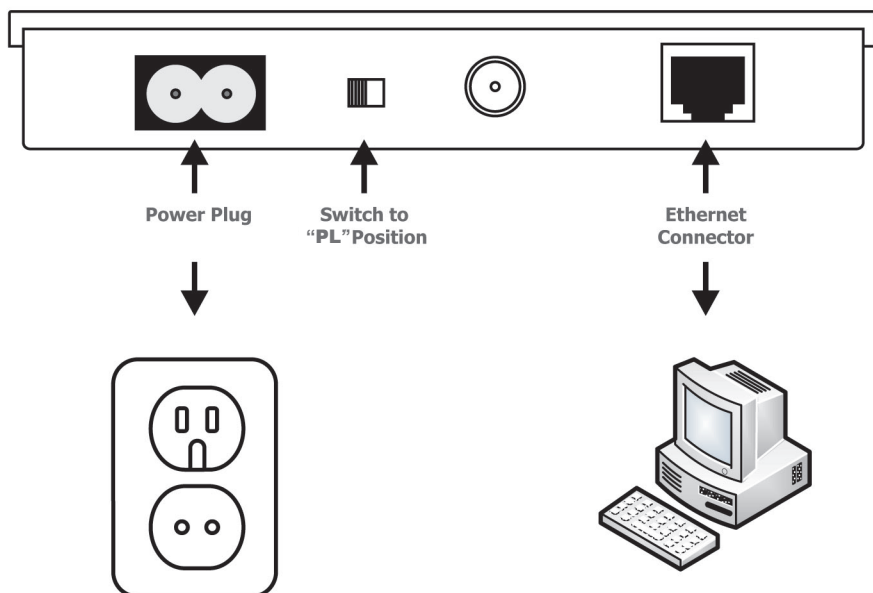
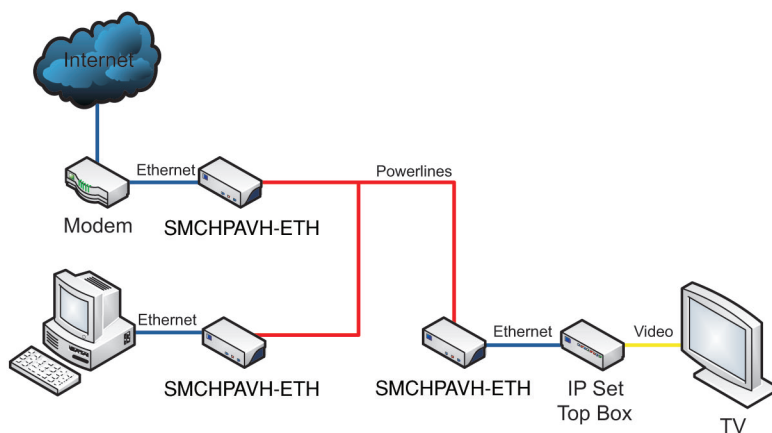
PL (Power Line)
/ COAXCoax
ConnectorEthernet
Connector

Power Plug - Plug for Power

PL (Power Line) / COAX - PL - HomePlug over Power Line
- COAX - HomePlug over Coax Cable

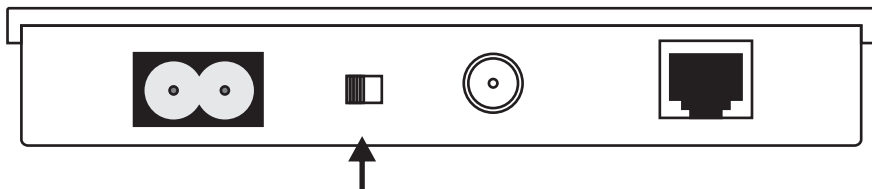
Coax Connector - Connector for Coax Signal

Ethernet Connector - Connector for Ethernet Cable



1

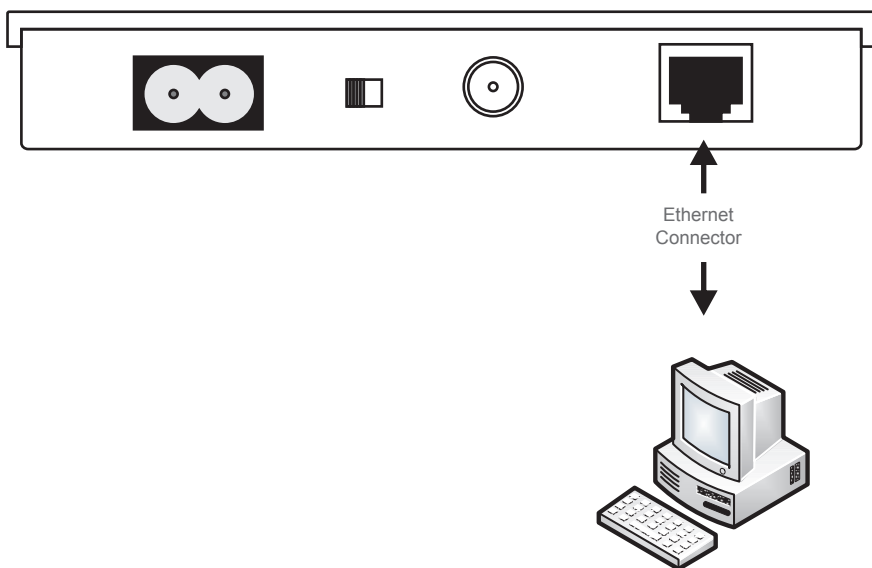
Powerline Installation



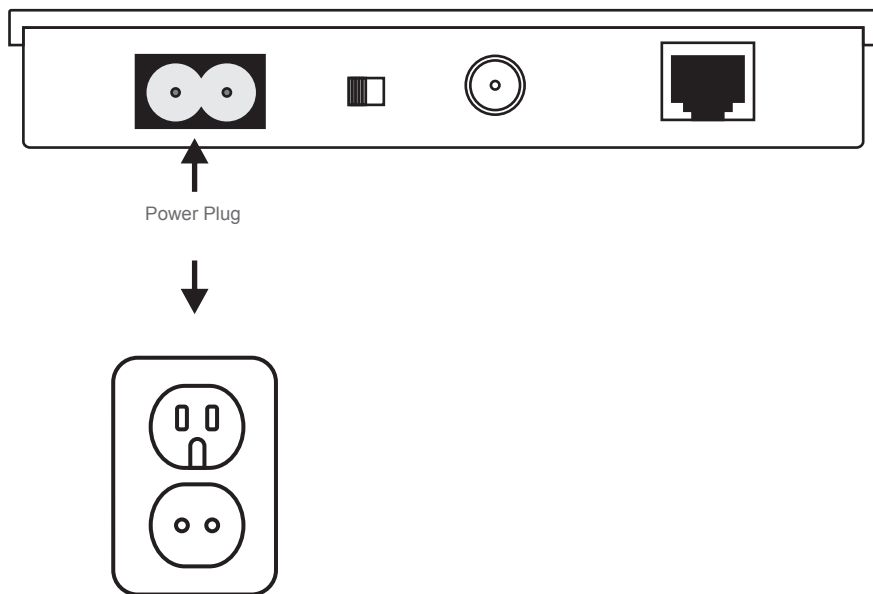
1. Switch Power Line Switch to "PL" Position.

2

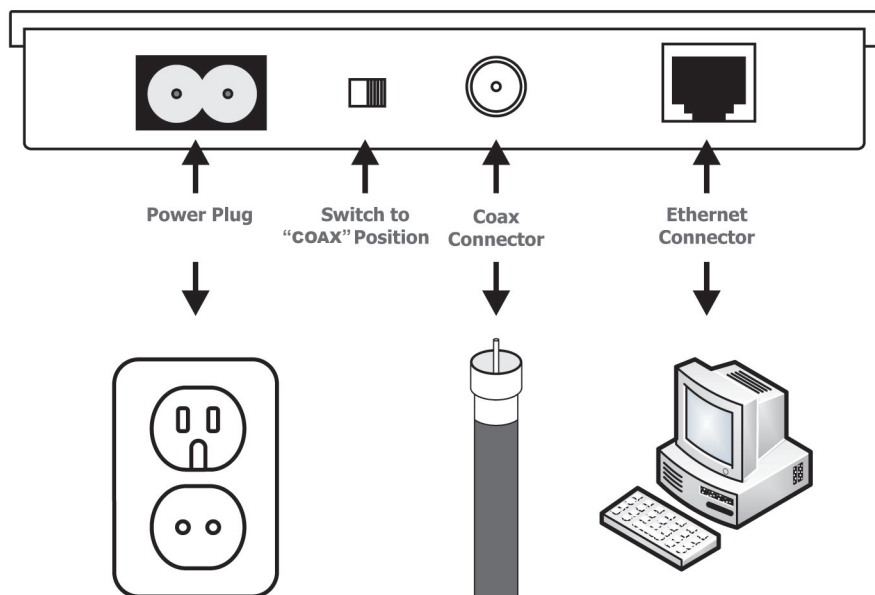
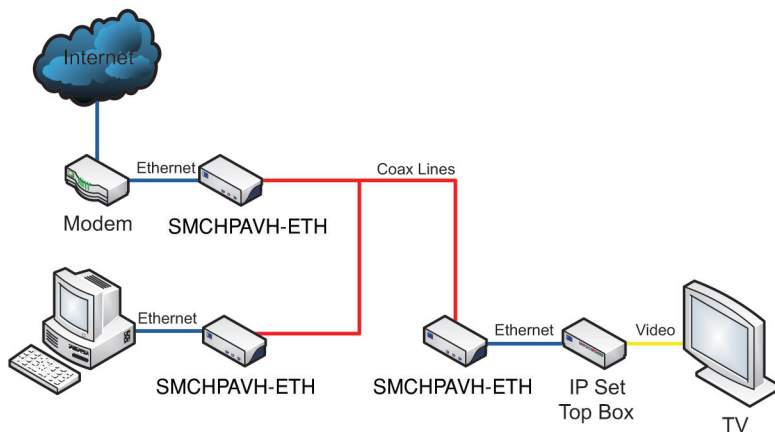
Powerline Installation



2. Plug Ethernet Cable to Ethernet Connector and Ethernet Device

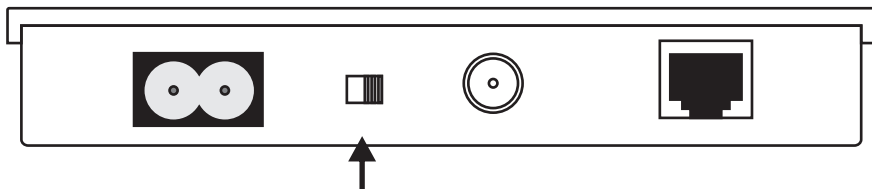


3. Plug Power Cable into Power Connect and Wall



1

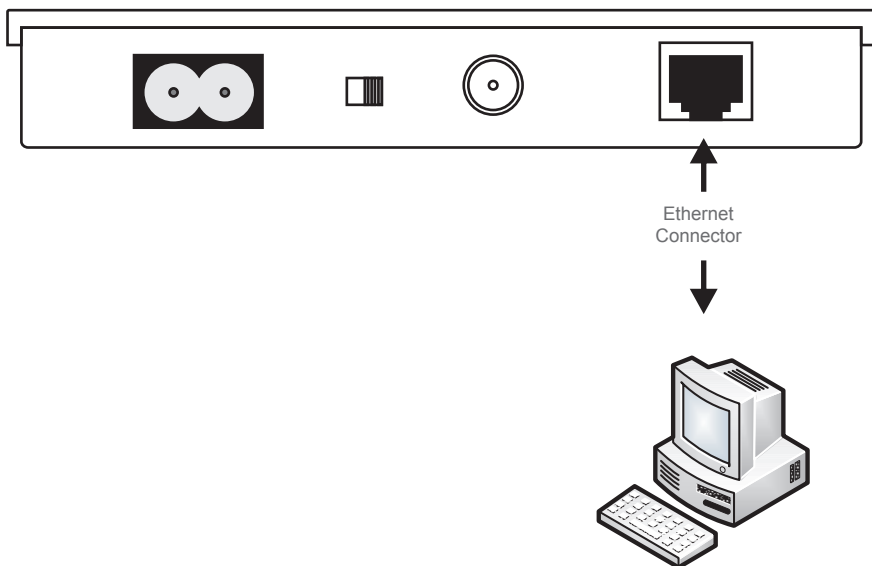
Cable Installation



1. Switch Power Line Switch to "COAX" Position.

2

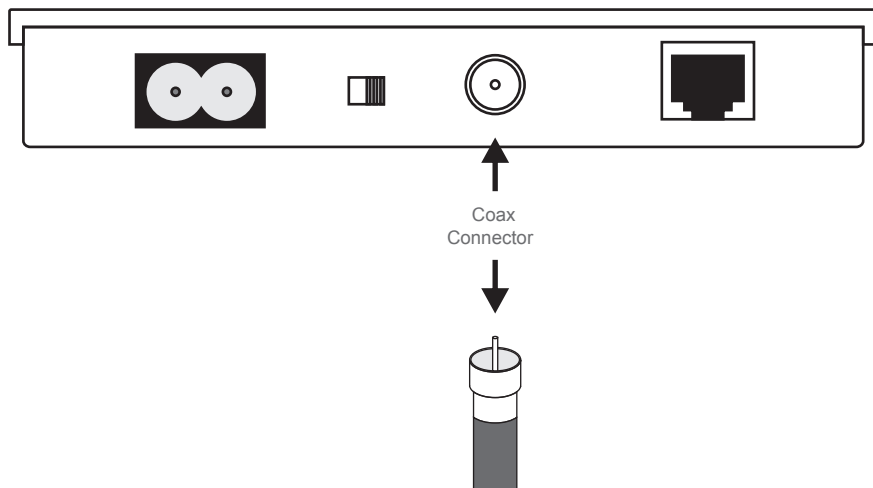
Powerline Installation



2. Plug Ethernet Cable to Ethernet Connector and Ethernet Device

3

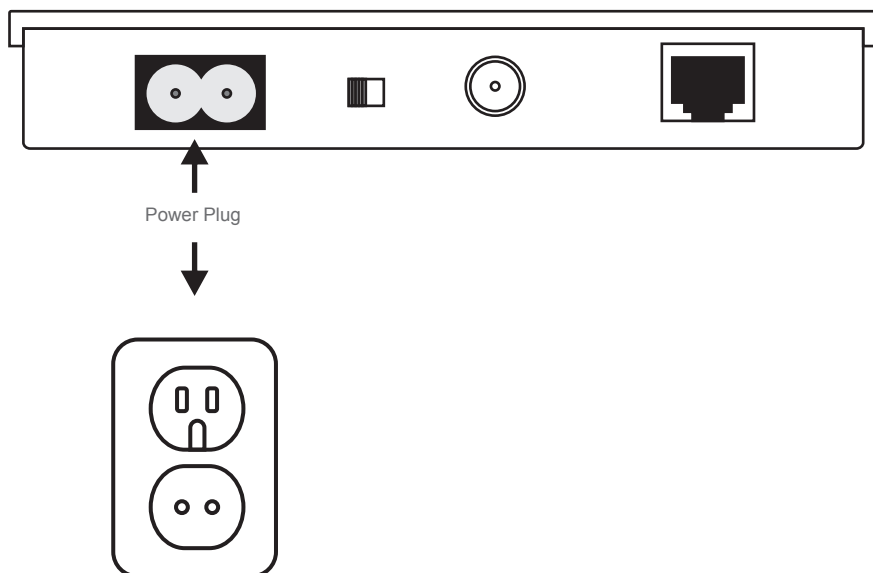
Powerline Installation



3. Plug Power Cable into Power Connect and Wall

4

Powerline Installation



4. Plug Power Cable into Power Connect and Wall

Main Chipset	Intellon INT6000CS+AD9865
Computer Interface	IEEE802.3; IEEE802.3u
Standards	HomePlug AV
Network Interface	One RJ-45 (10/100Base-T Ethernet) One 200Mbps Power Line Port or One 200Mbps Coax Port
Security	128-bit AES Link Encryption with Key Management
Data Transfer Rate	200 Mbps over Powerline and Coax Cable and 10/100Mbps over Ethernet
Modulation Schemes	OFDM Symbol Modulation on Line synchronization 1024/256/64/16/8 - QAM, QPSK, BPSK, ROBO Carrier Modulation
Frequency Band	2 ~ 28 Mhz
Additional Protocols	Mix of TDMA and CSMA/CA channel access scheme; CO device generates a periodic beacon carrier for channel access scheme
Operation Range	Estimated range of 300m in wall power lines Cabling 100Base-T; Cat. 5 UTP Cable
Operating Temperature	0°C to 40°C ambient temperature
Storage Temperature	-20°C to 70°C ambient temperature
Humidity	10 to 90% maximum (non-condensing)
Power Input	100 ~ 240V @ 50/60Hz Internal
Power Connector	External US/EU/UK or 6 ft AC power cord (option)
Housing Plastic	(Dimensions 73 x 103 x 40mm)
LED	Power ; PL —Link/Act ; ETH —Link/Act
Certifications	HomePlug Powerline AV Specification FCC Class B / CE Mark

TECHNICAL SUPPORT

From U.S.A. and Canada (24 hours a day, 7 days a week)
Phn: (800) SMC-4-YOU / (949) 679-8000
Fax: (949) 679-1481

ENGLISH

Technical Support information available at www.smc.com

FRENCH

Informations Support Technique sur www.smc.com

DEUTSCH

Technischer Support und weitere Information unter www.smc.com

SPANISH

En www.smc.com Ud. podrá encontrar la información relativa a servicios de soporte técnico

DUTCH

Technische ondersteuningsinformatie beschikbaar op www.smc.com

PORTUGUES

Informações sobre Suporte Técnico em www.smc.com

SWEDISH

Information om Teknisk Support finns tillgängligt på www.smc.com

INTERNET

E-mail address: techsupport@smc.com

Driver updates

http://www.smc.com/index.cfm?action=tech_support_drivers_downloads

World Wide Web

<http://www.smc.com/>



SMCHPAVH-ETH