



**PLANTRONICS**  
SOUND INNOVATION™

→ ● ● ● → USER GUIDE

# PLANTRONICS .AUDIO™ 910

BLUETOOTH® HEADSET SYSTEM



## WELCOME

This User Guide provides instructions on the setup and usage of the Plantronics Voyager 510 USB Bluetooth headset system. Before getting started, please review the safety booklet included in your package. For additional help, service or support information, refer to the product warranty card or visit [www.plantronics.com](http://www.plantronics.com).

## TABLE OF CONTENTS

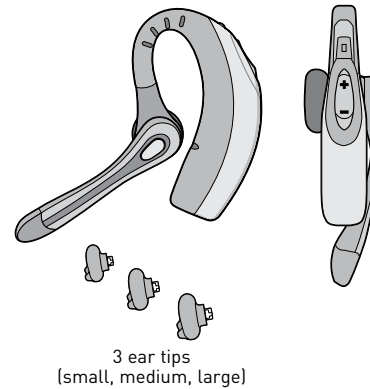
Package contents	3
Features	4
Charging	5
Powering	6
Pairing	7
Installing PerSonoCall software	9
Adjusting fit	12
Using your headset	14
Indicator lights	17
Troubleshooting	18
Technical assistance	20

## REGISTER YOUR PRODUCT ONLINE

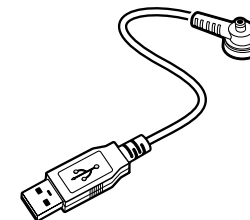
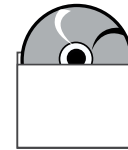
Visit [www.plantronics.com/productregistration](http://www.plantronics.com/productregistration) to register your product online so that we can provide you with the best possible service and technical support.

## PACKAGE CONTENTS

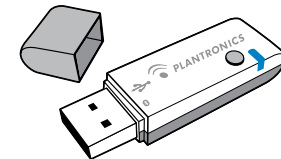
Headset  
Voyager 510  
(front and side view)



PerSonoCall®  
software CD



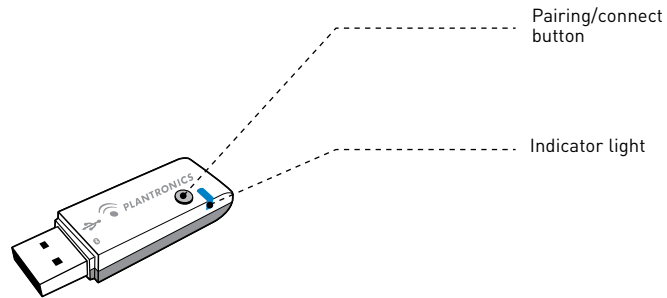
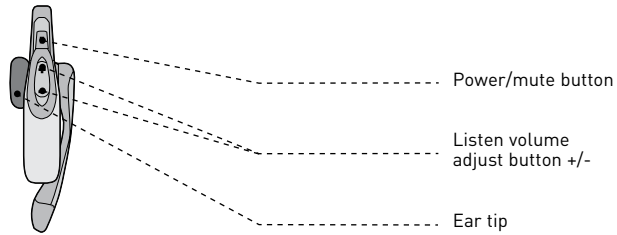
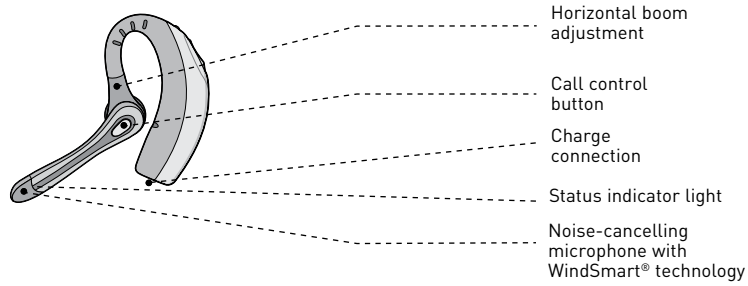
Headset USB charging cable



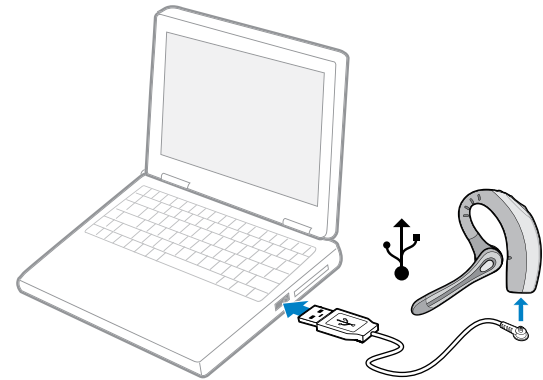
USB Bluetooth adapter  
BUA-100

Please refer to the separate Safety Instructions booklet for important product safety information prior to installation or use of the product.


## FEATURES




## CHARGING



Before using, you must first charge your headset. The indicator light flashes red while charging and turns solid blue when the headset is fully charged.

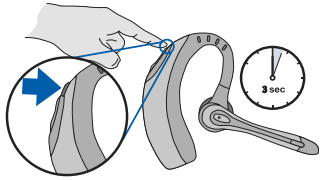
20 minutes = minimum charge 

3 hours = full charge 

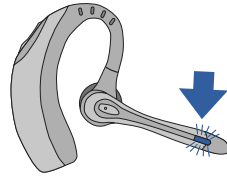
*NOTE: Do not use headset while charging and do not connect the charger while headset is in use.*

## POWERING

### Powering headset



Press and hold the power/mute button for three seconds to turn the headset on or off.



The indicator light flashes blue when the headset is on.

The indicator light will flash red when the battery becomes low.

### Powering USB Bluetooth adapter

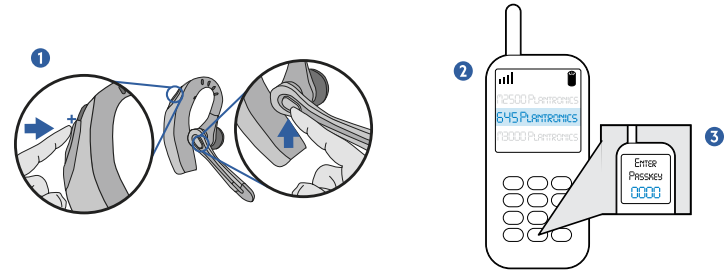


The USB Bluetooth adapter is automatically powered on upon inserting into the USB port of the computer. If the USB port on your computer is hard to access, you can use the USB extension cable.

*NOTE: The USB Bluetooth adapter is automatically active with the current paired headset when powered on.*

## PAIRING

### Pairing headset with Bluetooth phone



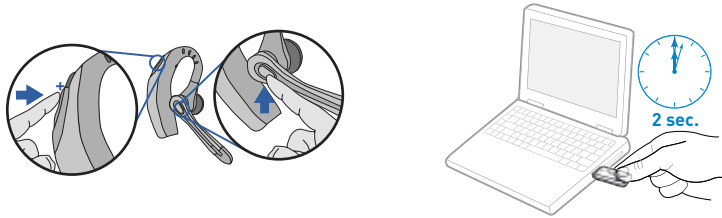
Before using your headset for the first time, you must pair it with your Bluetooth phone or device. Ensure that the headset is fully charged. For instructions on setting up and pairing with Bluetooth devices other than mobile phones, please consult your Bluetooth device user guide.

Turn on both devices.

1. Simultaneously press the volume adjust button marked + (volume up) and the call control button. Release the buttons when the indicator light begins to flash red then blue.
2. While the headset is flashing red and blue, use the phone menu to search for Bluetooth devices and select "510 Plantronics".
3. When prompted for password, enter 0000. The headset will flash blue when paired successfully.

## PAIRING

### Pairing headset with USB Bluetooth adapter



*NOTE: The headset and USB Bluetooth adapter are paired to each other at the factory. However, if you have purchased a USB Bluetooth adapter separately, or if you wish to use a replacement headset with your existing adapter, the units must be paired.*

Power on the headset. Insert the USB Bluetooth adapter into the USB port of your computer.

1. Simultaneously press the headset listen volume adjust button marked + (volume up) and the call control button. Release the buttons when the indicator light begins to flash red then blue.
2. Pinch the USB Bluetooth adapter pairing/connect button for at least 2 seconds until adapter flashes red and blue and begin pairing with your Bluetooth headset.

*NOTE: Take caution when manually pairing the USB adapter. Do not press hard. Please "pinch" with both fingers rather than push on the adapter to avoid damage to the adapter or USB port.*

## INSTALLING PERSONOCALL® SOFTWARE

Plantronics PerSonoCall® software provides the link between your Bluetooth headset and compatible softphone applications on your computer. PerSonoCall software provides the ability to remotely detect and answer/end a call from your softphone application via the headset call control button.

In addition, PerSonoCall provides some basic configuration and status information about the system. See page 10 for more details.

Check the PerSonoCall compatibility list at [www.plantronics.com/personocall](http://www.plantronics.com/personocall) for the most current information on softphone compatibility. If your softphone is not currently supported by PerSonoCall, please refer to page 14.

1. With the CD inserted, go to the PerSonoCall main screen and click on "Install the PerSonoCall Software".
2. Your softphone may require you to choose which audio device you wish to use. Please refer to softphone documentation for details.

*NOTE: When the USB Bluetooth adapter is installed, it becomes the default audio device in your computer. You can set preferences manually in the Windows® operating system through the Sounds and Audio Devices option in the Control Panel.*

*NOTE: Once installation is complete, we recommend that you set PerSonoCall to launch whenever the Windows® operating system starts. See page 10 for details.*

### System tray icons

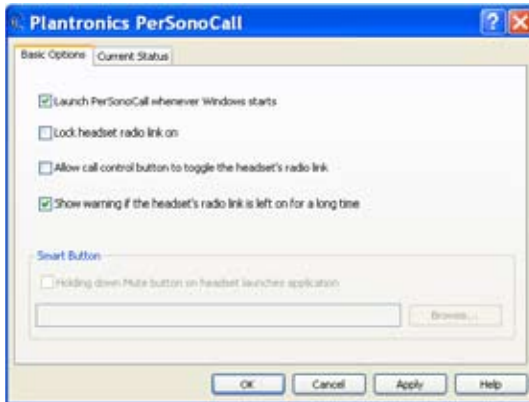
After installing the software, one of the four system tray icons will appear in the tray bar at the bottom of your screen showing the status of headset communication with PerSonoCall.

- No headset detected
- Headset detected, no radio link to USB Bluetooth adapter
- Headset detected and radio link to USB Bluetooth adapter active
- Headset detected and radio link to USB Bluetooth adapter is locked on

## INSTALLING PERSONOCALL SOFTWARE

Right-click on the headset system tray icon and choose "Options". This will bring up the PerSonoCall Basic Options and Current Status screens.

### Basic Options screen



*NOTE: Some PerSonoCall features are grayed out and not applicable to the .Audio 910 system.*

#### Launch PerSonoCall whenever Windows® starts

Check this box to automatically launch the PerSonoCall application whenever you start your computer. This is recommended.

#### Lock headset radio link on

Check this box to prevent PerSonoCall from turning off the radio link when no calls are present. See "Answering/ending/making calls with PerSonoCall on softphone" on page 14 to learn more. Be aware that locking the headset radio link on will dramatically reduce headset standby and talk time.

#### Allow call control button to toggle the headset's radio link

Check this box to turn the radio link to the headset on and off to support multipoint functionality. See page 15.

#### Show warning if the headset's radio link is left on for a long time

Check this box to be given a reminder if your headset radio link is left on for more than 30 minutes. Leaving the headset radio link on for long periods of time will dramatically reduce headset standby and talk time.

### Current Status screen



*NOTE: Some PerSonoCall features are grayed out and not applicable to the .Audio 910 system.*

#### Headset status box

Provides information you may need for technical assistance. The headset indicators listed will be checked if active.

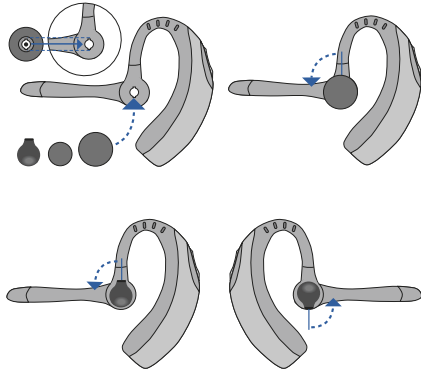
#### Softphone status box

Lists the selectable outgoing lines as well as the number of calls active, ringing, on hold and completed.

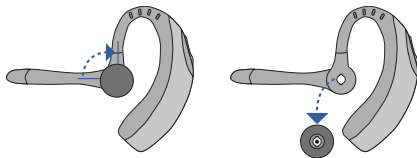
*NOTE: In some cases compatible softphones may not show the available outgoing line in the softphone status box. This will not affect how the softphone operates with PerSonoCall.*

## ADJUSTING FIT

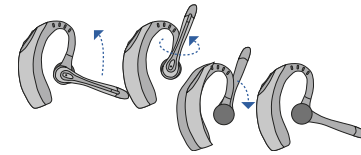
### Inserting a new ear tip



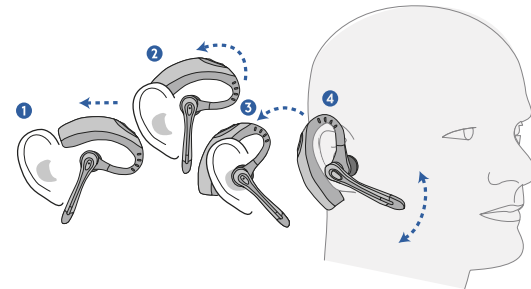
### Replacing the ear tip



### Wearing the headset



Rotate the microphone horizontally and vertically as illustrated, to select for left or right ear wearing. The illustration shows conversion from right to left ear wearing. Reverse the procedure to convert from left to right ear wearing.



Slide the headset over and behind your ear. Press gently towards your ear for a snug fit. Adjust the microphone position so that it is directed towards your mouth.

## USING YOUR HEADSET

### Answering/ending/making calls with PerSonoCall on softphone

**To make a call**, press the call control button to take the softphone off the hook. You should hear a dial tone.

**To answer or end a call**, press the call control button.

When using PerSonoCall, the radio link between the headset and the USB Bluetooth adapter will only be active during a call. This is the default setting intended to preserve the battery life of the headset. However, you may wish to have the radio link active when not on a call so you can listen to other audio sources, such as streaming audio on your PC. You can lock the radio link on in two ways:

- Basic Options screen—check the box for “Lock headset radio link on”—see page 10.
- Right click on system tray icon—and choose “Lock radio link on”.

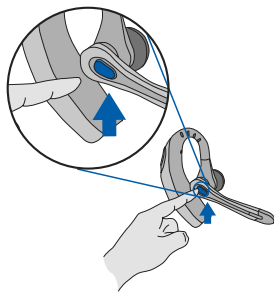
*NOTE: Locking the radio link on for extended periods of time will significantly reduce the standby and talk time of the headset.*

#### For softphones not compatible with PerSonoCall

Check the PerSonoCall compatibility list at [www.plantronics.com/personocall](http://www.plantronics.com/personocall) for the most current information on softphone compatibility.

If your softphone is not currently supported by PerSonoCall, remote detection and answer/end via the headset does not function. Pressing the call control button on the headset will only open and close the radio link providing audio; you must answer the call from the softphone.

### Answering/ending/making calls with mobile phone



**To answer or end a call**, briefly press the call control button.

**To make a call**, enter number on your phone, press send and the call is automatically transferred to headset; no need to press the call control button.

### Multipoint versatility

The Audio 910 headset has multipoint technology which allows you to switch seamlessly between two audio devices. You can answer a call from either your PC-based softphone or your mobile phone by pressing the call control button. The headset must be paired to both devices and then to enable this functionality, see “Allow call control button to toggle the headset’s radio link” on the Basic Options screen on page 10.

### Additional features Only with mobile phone

#### Redialling last number

To activate last number redial, double-click the call control button. You will hear a high tone for each key press. When you hear a further tone, the last number has been redialled.

#### Rejecting a call

When receiving an incoming call, press and hold the call control button. You will hear a tone. When you hear a second tone, the call has been rejected and you can release the button.

#### Using voice dialling

With the headset on, press and hold the call control button for 2 seconds, until you hear a second tone, to activate voice dialling.

*NOTE: To use voice activated dialling, the voice dialling feature must be enabled on your phone. See your Bluetooth phone manual for instructions.*

#### Switching a call from phone to headset

To switch an active call from your phone to your headset, briefly press the call control button.

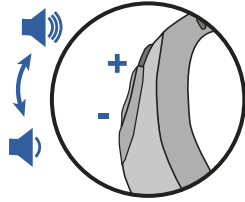
#### Switching a call from headset to phone

To switch an active call from your headset to your phone, press and hold the call control button until you hear a tone. When you hear a second tone, the transfer has been completed and you can release the button.



## USING YOUR HEADSET

### Adjusting volume

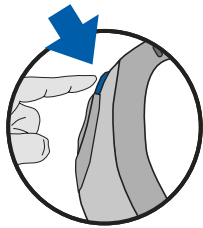


To increase listening volume, press the upper end (+) of the volume button. To decrease listening volume, press the lower end (-).

To adjust the listen or speak volume of the softphone, please refer to the softphone user documentation.

To adjust the listen or speak volume of the audio device on the computer, use the Sound and Audio Device section on the Control Panel.

### Muting a call



During a call, briefly press the power/mute button to mute the microphone. When muted, the headset will sound two tones every 30 seconds.

To unmute press the button again.

## INDICATOR LIGHTS

### Headset indicator lights

Headset status	Light
Power	Flashes blue
Charging	Flashes red
Fully charged	Solid blue
Battery low	Flashes red
Pairing	Flashes red and blue
Bluetooth device Connected to headset	Flashes blue

### Bluetooth USB adapter indicator lights

Action	Light
Disconnected from the headset	Flashes purple
Connected to the headset	Solid blue
Radio link active	Flashes blue
Pairing mode	Flashes red and blue

## TROUBLESHOOTING FOR AUDIO 910

### Problem

My Voyager headset does not work with the softphone I am using on my PC (I cannot answer or disconnect from the headset call button).

### Solution

- Check compatibility list on [www.plantronics.com/personacall](http://www.plantronics.com/personacall) to ensure your softphone is compatible for remote answer and disconnect.
- Headset battery needs to be charged. See page 5.
- Headset is not paired to the USB Bluetooth adapter. See page 8.
- When a PC goes into standby or hibernation, the USB Bluetooth adapter is no longer powered on. Ensure your PC is in an active state.
- Ensure PerSonoCall software is installed and running. See page 9.

I've plugged in the USB Bluetooth adapter, but my headset does not respond to button presses.

- Headset is not paired to the USB Bluetooth adapter. See page 8.
- Headset battery needs to be charged. See page 5.
- Headset may be out of range of the USB Bluetooth adapter. Move closer to adapter until the headset is within range. Range varies with office environment.
- When a PC goes into standby or hibernation, the USB Bluetooth adapter is no longer powered on. Ensure your PC is in an active state.

I've installed PerSonoCall and the USB Bluetooth adapter but the system tray icon shows a red X (denoting no connection).

- Headset is not paired to the USB Bluetooth adapter. See page 8.

I cannot hear caller/dial tone.

- Headset is not paired to the USB Bluetooth adapter. See page 8.
- Headset battery needs to be charged. See page 5.
- The USB Bluetooth adapter is not set as the default audio device. Use the Audio settings in Windows® under Sounds and Audio Devices to select "Plantronics BT Adapter" as the audio device.
- Listening volume is too low. Press the volume up button on the headset. See page 16.

Callers cannot hear me.

- Headset is muted. Press the mute button on headset to unmute the microphone. See page 16.
- Headset microphone boom aligned incorrectly. Align the headset boom with your mouth.
- Speak volume is too low. Increase the speak volume on your softphone until you can be heard by callers. If the volume is still too low, increase the microphone level on your computer.
- Headset battery needs to be charged. See page 5.
- The USB Bluetooth adapter is not set as the default audio device. Use the Audio settings in Windows® under Sounds and Audio Devices to select "Plantronics BT Adapter" as the audio device.

### Problem

Sound in headset is distorted. I can hear echo in headset.

### Solution

- Lower the listen volume on your softphone until the distortion disappears.
- If the distortion is still present, lower the listen volume control on the computer.
- Adjust volume on headset. See page 16.

I can hear too much background conversation or noise.

- Speak volume is too high. Lower the speak volume on your softphone until the noise disappears. If the noise is still present, lower the microphone volume control on the computer.

The other headset I was using to listen to music does not work any more.

- The USB Bluetooth adapter will set itself as the default audio device in Windows®. Use the Audio settings in Windows® under Sounds and Audio Devices to change the device used for audio.

My headset stops responding to button presses.

- Headset battery may be dead, so ensure the headset is fully charged. See page 5.
- When a PC goes into standby or hibernation, the USB Bluetooth adapter is no longer powered on. Ensure your PC is in an active state.

Battery talk time or standby time is significantly degraded even after a full charge.

- The headset radio link is locked on. Ensure you do not lock the radio link on for long periods of time as it will significantly reduce the standby and talk time of the headset. See page 10.
- Battery may be deteriorating. Call your supplier or Plantronics.

I hear beeps in the headset.

- One beep every 10 seconds is caused by a low battery warning. Recharge battery by returning headset to the charging stand for one to three hours until indicator light turns blue.
- One beep is an out of range warning. Move closer to the USB Bluetooth adapter.
- Two beeps every 30 seconds indicate your mute is on. Press the mute button once to turn mute off.

Pressing the call control button on the headset when I have an incoming call on my softphone hangs up the call.



- Uncheck the box in the Basic Options screen for "Allow headset call control button to toggle the headset's radio link". See page 10.

I am using my headset to answer calls from both my softphone and my mobile phone, and pressing the call control button on the headset takes my softphone off the hook instead of answering my ringing mobile phone.

- Check the box in the Basic Options screen for "Allow headset call control button to toggle the headset's radio link". See page 10.

## TECHNICAL ASSISTANCE

Visit our web site at [www.plantronics.com/support](http://www.plantronics.com/support) for technical support including frequently asked questions, compatibility and accessibility information. The Plantronics Technical Assistance Center (TAC) is also ready to assist you on 0800 410 014.

<input checked="" type="checkbox"/> AUT, BEL, DEU, DNK, ESP, FRA, GRC, ITA, IRL, LUX, NLD, PRT, SWE, FIN, CYP, CZE, EST, HUN, LVA, LTU, MLT, POL, SVK, SVN.	 
<input checked="" type="checkbox"/> GBR	

Plantronics Ltd  
Wootton Bassett, UK  
Tel: 0800 410 014

Plantronics B.V.  
Hoofddorp, Nederland  
Tel: 0800 752 6876 (NL)  
00800 752 687 66 (BE/LUX)

Plantronics Sarl  
Noisy-le-Grand, France  
No Indigo : 0825 082599  
0, 15 4 TTC / mn  
+33 14167 4141

Plantronics GmbH  
Hürth, Deutschland  
Tel: 0800 9323400  
Österreich: 0800 242 500  
Schweiz: 0800 932 340

Plantronics Acoustics  
Italia Srl  
Milano, Italia  
Numero Verde: 800 950 934

Plantronics Iberia, S.L.  
Madrid, España  
Tel: 902 415 191  
+34 91 640 47 44 (ES)  
Tel: 800 844 517 (PT)

Nordic Region  
Tel: Finland: 0800 117 095  
Tel: Sverige: 02002 14681  
Tel: Danmark: 8088 4610  
Tel: Norge: 800 113 36

Plantronics Middle East,  
Eastern Europe, and Africa  
Tel: +44 1793 842 443

Plantronics, Inc.  
345 Encinal Street  
Santa Cruz, CA95060 USA  
Tel: 1 831 426 5868



[www.plantronics.com](http://www.plantronics.com)

© 2006 Plantronics, Inc. All rights reserved. Plantronics, the logo design, Audio, PerSonoCall, and Sound Innovation are trademarks or registered trademarks of Plantronics, Inc. The Bluetooth name and the Bluetooth trademarks are owned by Bluetooth SIG, Inc. and are used by Plantronics, Inc. under licence. Windows is either a registered trademark or a trademark of Microsoft Corporation in the United States and/or other countries. All other trademarks are the property of their respective owners. Patents U.S. 5,210,791; 6,923,688; D512,984; Australia 303054; EM 293964-0004-0006 and Patents Pending.

74146-08 [08/06]