

USB Host CF Card **CFU2**

User's Guide

Jan. 2007

Rev. 1.0

 **RATOC Systems, Inc.**

CFU2

1. Introduction	1
1-1. Features	1
1-2. Package Confirmation	2
1-3. System Requirements and Restrictions	2
1-4. USB Device Support	3
1-5. Before installation	4
2. Installation	5
2-1. Confirming a folder structure	6
2-2. Connecting the PDA to the PC with ActiveSync	6
2-3. CFU2 Host Driver Set Up	7
2-4. CFU2 HID Driver Set Up	8
2-5. CFU2 Mass Storage Driver Set Up	9
3. Uninstallation	10
4. Registration and Tech-Support	11
5. Specifications	12

1.Introduction

The CFU2 is a USB1.1 Host CF card for use in CF Type II card enabled PDA. This User's Guide describes how to install, use the CFU2. The information in the README file in the CD-ROM may include newer information. For the latest information, go to our home page.

<http://www.ratocsystems.com/english/>

1-1. Features

- Just insert the CFU2 into a CF slot and USB1.1 Host Interface will be available.
- USB HID Driver and USB Mass Storage Class Driver are included. The drivers allow you to use USB keyboards, USB bar code readers, USB Flash disks, etc.
- Power-saving design enables to run battery-driven PDAs for a long time.
- Support both 3.3V and 5V operation.
- CFU2 dongle cable is detachable from the CFU2 CF card.
- RoHS compliant.

1-2. Package Confirmation

Check Package Contents:

- CFU2 CF card
- Cable
- Software CD-ROM
- Pull-out sticker
- Quick Install Guide
- Software Lisence Agreement

NOTE

If any of these items are missing, contact the supplier immediately.

1-3. System Requirements and Restrictions

OS

- Pockert PC 2003, Pocket PC 2003SE, Windows Mobile 5

Supported PDA

Refer to our home page and check the latest information.

<http://www.ratocsystems.com/english/>

NOTE

- 1. Some applications which needs a lot CPU power like an MP3 player, data transfer rate may be getting slower or the performance of the applications may be getting poor.**
- 2. To use the CFU2 on the PDA, PCMCIA Card or CF Type II slot is required. For a PCMCIA Card slot, a CF Type II PCMCIA adapter is needed. The CF Type II Adapter PCMCIA adapter is not included in the package.**

1-4. USB Device Support

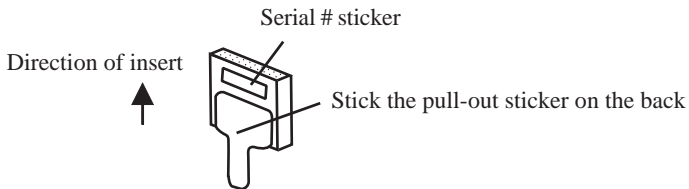
- USB keyboard
 - USB bar code reader
 - USB Flash Disk
 - USB MO, ZIP
 - USB HUB
- For more information, refer to our web site
<http://www.ratocsystems.com/english/>

NOTE

- 1. The CFU2 can supply up to 100mA to USB bus. If the USB device needs power from USB bus over 100 mA, we have to use a self-powered USB hub.**
- 2. NTFS format is not supported by Windows Mobile.**

1-5. Before installation

In order to pull CF Cards easily from the CF Card Slot, a pull-out sticker comes with the CFU2 package. If there is not an eject button for the CF card, use the sticker as follows.



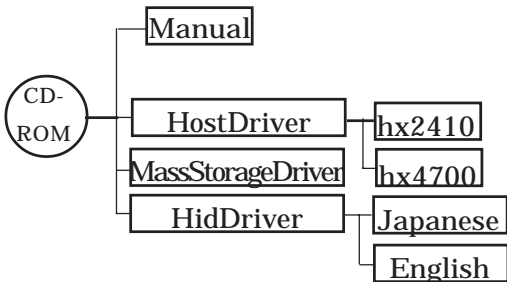
2. Installation

Follow the instructions below to install drivers.

1. Confirming a folder structure in the software CD-ROM (See 2-1).
2. Connecting the PDA to the PC system with ActiveSync (See 2-2).
3. Installing the CFU2 Host Driver (See 2-3).
4. Installing the HID Driver, if the USB device is an HID(Human Interface Device) such as a USB keyboard, USB bar code reader, etc (See 2-4).
5. Installing the Mass Storage driver, if the USB device is a mass storage devices such as an USB Flash Disk, USB MO (See 2-7).

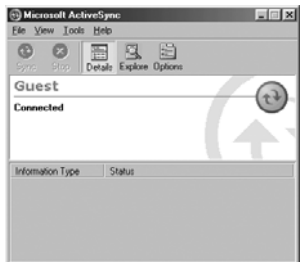
2-1. Confirming a folder structure

Folder structure in the software CD-ROM is as follows:



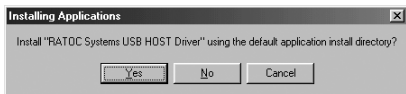
2-2. Connecting the PDA to the PC with ActiveSync

For driver installation, ActiveSync is needed. The ActiveSync should come with the PDA.

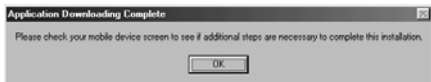


2-3. CFU2 Host Driver Set Up

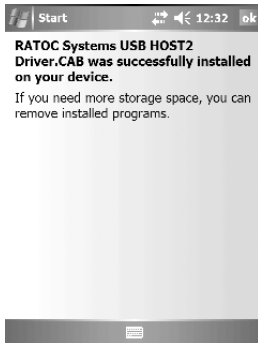
Install the CFU1U Host Driver first. Insert the software CD-ROM into a CD-ROM drive. execute setup.exe in the [HostDriver] folder. Following window will appear. Click [Yes] to install the driver.



When the installation is completed, the following window will appear. Click [OK].



Message on PC



Message on PDA (Windows Mobile 5)

2-4. CFU2 HID Driver Set Up

In order to connect a HID (Human Interface Device) such as an USB keyboard, USB bar code reader, install the HID driver. Insert the software CD-ROM into a CD-ROM drive. Execute setup.exe in [HidDriver\English] folder. Following window will appear. Click [Yes] to install the driver. When the installation is completed, following window will appear. Click [OK]. You need to reset your PDA to take effect.



Message on PC



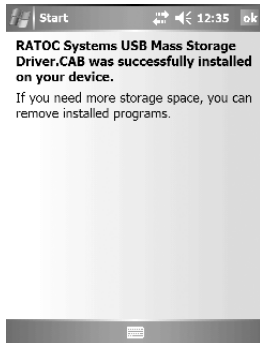
Message on PDA (Windows Mobile 5)

2-5. CFU2 Mass Storage Driver Set Up

In order to connect a mass storage device such as a USB Flash Disk, a USB MO, install the Mass Storage driver. Insert the software CD-ROM into a CD-ROM drive. Execute setup.exe in [MassStorageDriver] folder. Following window will appear. Click [Yes] to install the driver. When the installation has completed, the following window will appear. Click [OK]. You need to reset your PDA to take effect.



Message on PC



Message on PDA (Windows Mobile 5)

3. Uninstallation

Follow the instructions below to uninstall drivers.

1. Take the CFU2 card from the CF slot.
2. On the PDA, go to [settings]-[System]-[Remove Programs]. (Windows Mobile 5)
3. Select the driver to uninstall and click Remove button.
4. Click Yes to uninstall the driver.



4. Registration and Tech-Support

3-1. How to Register

We recommend to register yourself as our customer through our on-line registration. (<http://www.ratocsystems.com/english/>)

3-2. Software Update and Support

The latest software is subject to change for improvement or bug fix. You can download the latest version from our web site.

3-3. Technical Support

You can get a Tech support from RATOOC at the following:

Open 9:30AM-5:00PM(PST) Mon-Fri(except holidays)

RATOOC Systems International, Inc. Tech support

Address: 2000 Wyatt Drive Suite 9

Santa Clara, CA 95054, United States

Phone : (408)986-9040 Fax : (408)986-9042

E-mail : <http://www.ratocsystems.com/english/contact/support.html>

Please include the following information:

- **Our product name, serial number, and product description**
- **Host Computer Name, OS version, CD-ROM version**

5. Specifications

CFU2 USB1.1 Host CF Card

Bus Interface : CF+ and CompactFlash Specifications Rev1.4

USB Interface: USB 1.1 Host Port(12Mbps/1.5Mbps)

Connector: USB1.1 series A(Female) x 1

Max Bus Power: 100mA

Power Consumption : 3.3V/5V

34mA at 3.3V(without any device connected)

27mA at 5V(without any device connected)

Operating Requirements: Temperature 32 to 131°F(0 to 55°C)

Relative Humidity 10 to 80%(non-condensing)

Size: 1.68 in (42.8 mm) (W) x 1.43 in (36.4 mm) (D) x 0.19 in (4.9 mm) (H)

Cable length: 3.93 in (10 cm)

USB1.1 Host Driver

Host Interface : Original Class

Transfer Protocol : Control, Bulk, Interrupt transfer

Mass Storage Driver

Transfer Protocol : BOT(Bulk Only Transfer)

Appendix

Trademarks

- Windows is a registered trademark of Microsoft Corporation.
- Other brand and product names may be registered trademarks or trademarks of their respective holders.

Regulatory Agency Notice

FCC Compliance Statement

This equipment has been tested and found to comply with the limits for a Class B digital device, pursuant to Part 15 of the FCC Rules. These limits are designed to provide reasonable protection against harmful interference in a residential installation. This equipment generates, uses and can radiate radio frequency energy and, if not installed and used in accordance with the instructions, may cause harmful interference to radio communications. However, there is no guarantee that interference will not occur in a particular installation. If this equipment does cause harmful interference to radio or television reception, which can be determined by turning the equipment off and on, the user is encouraged to try to correct the interference by one or more of the following measures:

- (1) Reorient or relocate the receiving antenna.
- (2) Increase the separation between the equipment and receiver.
- (3) Connect the equipment into an outlet on a circuit different from that to which the receiver is connected.
- (4) Consult the dealer or an experienced radio/TV technician for help.

Changes or modifications not expressly approved by the party responsible for compliance may result in this unit not complying with FCC Rules Part 15.

