

CP-104UL User's Manual

Smartio 4-Port Serial Board for Universal PCI Bus

Third Edition, December 2004

www.moxa.com/product



Moxa Technologies Co., Ltd.

Tel: +886-2-8919-1230

Fax: +886-2-8919-1231

Web: www.moxa.com

MOXA Technical Support

Worldwide: support@moxa.com.tw

The Americas: support@moxa.com

Smartio CP-104UL User's Manual

The product described in this manual is furnished under a license agreement and may be used only in accordance with the terms of that agreement.

Copyright Notice

Copyright © 2004 Moxa Technologies Co., Ltd.

All rights reserved.

Reproduction in any form without permission is prohibited.

Trademarks

MOXA is a registered trademark of Moxa Technologies Co., Ltd.

All other trademarks or registered marks in this manual belong to their respective manufacturers.

Disclaimer

Information in this document is subject to change without notice and does not represent a commitment on the part of Moxa.

Moxa provides this document “as is,” without warranty of any kind, either expressed or implied, including, but not limited to, its particular purpose. Moxa reserves the right to make improvements and/or changes to this manual, or to the products and/or the programs described in this manual, at any time.

Information provided in this manual is intended to be accurate and reliable. However, Moxa Technologies assumes no responsibility for its use, or for any infringements on the rights of third parties that may result from its use.

This product might include unintentional technical or typographical errors. Changes are periodically made to the information herein to correct such errors, and these changes are incorporated into new editions of the publication.

MOXA Internet Services

Customer satisfaction is our number one concern. To ensure that customers receive the full benefit of our products, Moxa Internet Services has been set up to provide technical support, driver updates, product information, and user's manual updates.

The following services are provided:

E-mail for technical support

address support@moxa.com.tw

World Wide Web (WWW) site for product information

address <http://www.moxa.com>

or <http://www.moxa.com.tw>

Table of Contents

1	Introduction.....	1-2
	Overview.....	1-2
	Smartio—The Smart Multiport Async Solution	1-2
	Board Applications	1-2
	Features	1-3
	Package Checklist.....	1-4
	Installation Guide.....	1-5
2	Hardware Installation	2-1
	Installing the Smartio CP-104UL board.....	2-1
3	Software Installation	3-1
	Windows 2003	3-1
	Installing the Driver	3-1
	How to Check the Installation	3-6
	Windows 2000/XP	3-8
	Installing the Driver	3-9
	How to Check the Installation	3-13
	Removing the Driver	3-16
	Windows 95/98	3-18
	Installing the Driver	3-19
	Windows NT	3-28
	Installing the Driver	3-29
	Configuring the Board and Ports	3-31
	DOS	3-35
	Installing the Driver	3-35
	Setting up the Driver	3-36
	Legends	3-38
	Loading the Driver.....	3-39
	Unloading the Driver	3-39
	Linux	3-39
	SCO	3-40
4	Serial Programming Tools.....	4-1
5	Connection Cables and Cable Wiring	5-1
	RS-232 Cable Wiring.....	5-1
	DB-9/M Pin Assignment (CBL-M44M9x4-50, Opt4-M9B).....	5-2
	DB-25/M Pin Assignment (CBL-M44M25x4-50)	5-2
	RJ45 Pin Assignment (Opt4-RJ45B).....	5-2
6	Troubleshooting	6-1
	General Troubleshooting.....	6-1
	Windows NT	6-2
	Windows 95/98	6-2
A.	Technical Reference.....	A-1
	Specifications	A-1
	PCI.....	A-1
	MOXA UART	A-1

1

Introduction

Overview

Smartio—The Smart Multiport Async Solution

The term Smartio stands for *smart multiport serial I/O* solution. The Smartio CP-104UL Board is designed for the 32-bit PCI bus with Plug and Play feature. These boards offer 4 RS-232 serial ports for connecting terminals, modems, printers, scanners, cash registers, bar code readers, keypads, numeric displays, electrical scales, data acquisition equipment, and many other serial devices for the PC and compatible systems. With its well-designed and fine-tuned device driver, the Smartio boards make full use of the 128 byte Tx/Rx FIFO and on-chip H/W and S/W flow control, which makes possible transferring data without loss at transmission speeds up to 921.6Kbps. These boards offer a reliable and high performance solution for serial multiport communications.

Board Applications

The CP-104UL Board can be used with many applications, including:

- Internet/Intranet Connections
- Remote Access Applications
- Multi-user Applications
- Industrial Automation
- Office Automation
- Telecommunications
- PC-based Vending Machines or Kiosk Systems
- POS (Point-of-Sale) Systems

PCI Solution

The CP-104UL board complies with PCI Spec. 2.1, and does not use either switches or jumpers. The hardware configuration for the IRQ and Memory addresses is automatically assigned by the PCI BIOS. Hence, the board **MUST** be plugged in before installing the driver software. For more PCI information, refer to the Technical Reference Appendix.

Surge Protection

To prevent the board from being damaged by lightning or high potential voltage, TVSS (Transient Voltage Surge Suppressor) technologies with 15KV ESD protection are used in the CP-104UL board. This is required for harsh environments, such as in factory settings, under severe weather

conditions, such as lightning, or other high interference situations.

Operating System Support

The CP-104UL board supports Windows 2000/XP/2003, Windows NT, Windows 95/98, DOS, FreeBSD, SCO, and Linux. For more detail installation guide, please refer to www.moxa.com.

MOXA Serial Comm Tool

For application development, MOXA provides an easy-to-use serial communication library (*PComm*) under Windows 2000/XP/2003 and Windows 95/98/NT. With this library, it is easy to develop your own applications using sample applications developed with Visual Basic, Visual C++, Borland Delphi, etc. Utilities such as diagnostic, monitor, and terminal emulation are also included for debugging and monitoring communication status, terminal emulation, and file transfer.

Features

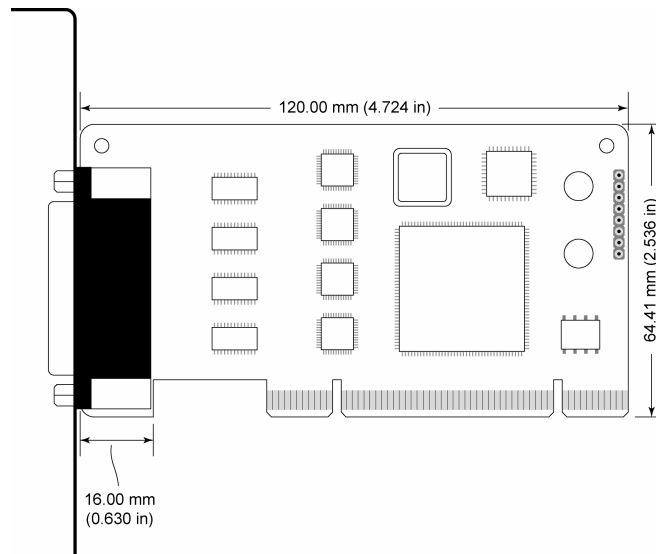
The Smartio CP-104UL board has 4 RS-232 ports, embedded ESD 15 KV surge protection, and uses a Moxa UART (MU860), and has the following important features:

- Supports universal PCI, plug and play (no switches or jumpers)
- Fits both 3.3V and 5V connector key
- Reliability—high speed Moxa UART Communication Controllers with on-chip hardware and software flow control to guarantee no data loss
- Compact half-size design
- Embedded ESD 15V surge protection
- Easy installation—32-bit PCI bus with Plug and Play capability
- Powerful Serial Comm tool—PComm
- Various OS support—Windows 2000/XP/2003, Windows NT, Windows 95/98, DOS, FreeBSD, SCO, and Linux.

Package Checklist

You should find the following items in the Smartio CP-104UL board package:

- Smartio CP-104UL 4-port serial board
- Documentation and Software CD that contains drivers for Windows 2000/XP/2003, Windows NT, Windows 95/98, DOS, FreeBSD, SCO, and Linux.
- Smartio CP-104UL Quick Installation Guide



Installation Guide

This section gives a brief summary of how to install the Smartio CP-104UL board under each supported operating system. The installation is simple and involves the following stages:

Check the PCI BIOS settings.
Install the Smartio CP-104UL board.

See Chapter 2, “**Hardware Installation.**”



Install the software from the diskette.
Configure the driver for the board and ports.

See the respective OS section in Chapter 3, “**Software Installation.**”



Connect the devices with the cable.

See Chapter 5, “**Connection Cables and Cable Wiring,**” for cable wiring.



Restart the system.
Check the driver initialization status.

See Chapter 3, “**Software Installation,**” for board init. status.

If the system restarts successfully, you may develop your applications or execute the desired applications.

See Chapter 4, “**Serial Programming Tools.**”

2

Hardware Installation

The installation of the Smartio CP-104UL board involves both hardware and software. Software installation is discussed in the next chapter. In this chapter, we discuss hardware installation.

The no-switch-no-jumper Smartio CP-104UL board's IRQ number and I/O addresses are assigned automatically by the PCI BIOS. For this reason, the board **MUST** be plugged in before installing the driver software.

Installing the Smartio CP-104UL board

Step 1: Power off the PC.

Warning! To avoid damaging your system and board, make sure your PC's power is switched off before inserting this or any other board into an empty PCI slot.

Step 2: Remove the PC's cover.

Step 3: Remove the slot cover bracket if one is in place.

Step 4: Insert the Smartio CP-104UL control board firmly into a free PCI or PCI-X slot.

Step 5: Fasten the holding screw to fix the control board in place.

Step 6: Replace the PC's cover.

Step 7: Power on the PC; the BIOS will automatically set the IRQ and I/O address.

Note! Moxa Universal PCI or PCI occupy one unique IRQ and I/O addresses are assigned automatically by the PCI BIOS.

Step 8: Proceed with the software installation, as described in the next chapter, "Software Installation".

3

Software Installation

In this chapter, the driver software installation, configuration, and driver update/removal procedures are described for various operating systems, including Windows 2003, Windows 2000/XP, Windows NT, Windows 95/98, DOS, SCO, and Linux. Before proceeding with the software installation, be sure to first complete the hardware installation discussed in the previous chapter.

Refer to the next chapter, “Serial Programming Tools,” for information on developing your own serial programming applications.

Windows 2000/XP/2003, Windows NT, Windows 95/98, DOS, FreeBSD, SCO, and Linux drivers can be downloaded from the Moxa website.

Windows 2003

This section includes information about how to install the driver for UPCI/PCI boards under Windows 2003. The drivers conform to the Win32 COMM API standard.

The Windows 2003 driver for MOXA’s multiport serial boards supports the following products:

- Universal PCI Boards: CP-168U, CP-104UL, CP-104JU, CP-134U, CP-134U-I, CP-132UL, CP-132UI
- PCI Boards: C168H/PCI, C104H/PCI, C104HS/PCI, CP-114, CP-114I, CP-114S, CP-114IS, CP-132, CP-132I, CP-132S, CP-132IS
- ISA Boards: C168H, C168HS, C168P, C104H, C104HS, C104P, CI-104J, CI-104JS, CI-134, CI-134I, CI-134IS, CI-132, CI-132I, CI-132IS
- cPCI Boards: CT-114I

The following steps are using CP-168U as an example.

Installing the Driver

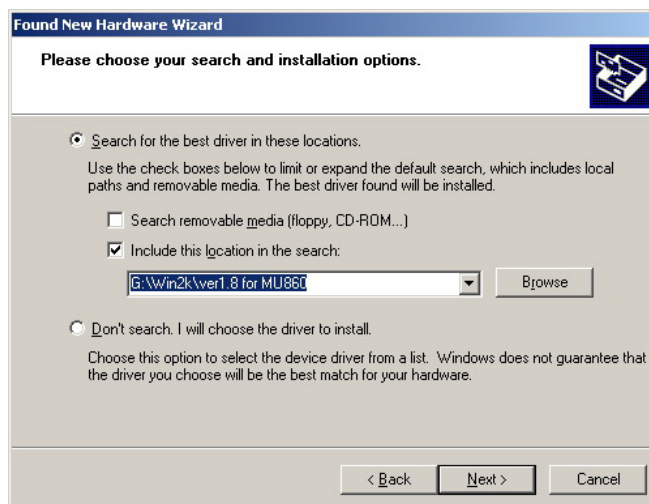
1. After installing the UPCI/PCI board and powering on your PC, Windows 2003 will auto detect and find the UPCI/PCI board you just added. The **Found New Hardware** window will open at the bottom right corner of the desktop.



2. The **Welcome to the Found New Hardware Wizard** window will open automatically. Select **Install from a list or specific location (Advanced)** and click on **Next** to continue.



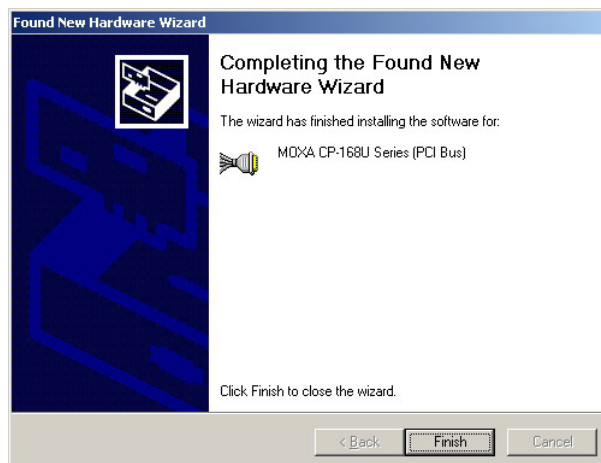
3. Select **Search for the best driver in these locations.**, check **Include this location in the search**, and then click on **Browse**. You should be able to locate the **\Software\Win2K-XP-2003** folder on the software CD. Click on **Next** to continue.



4. Wait while the installation wizard searches. The next window that opens cautions you that although this software hasn't passed Windows Logo testing, this driver has already been tested and been shown that it can support Windows OS. Click on **Continue Anyway** to proceed.



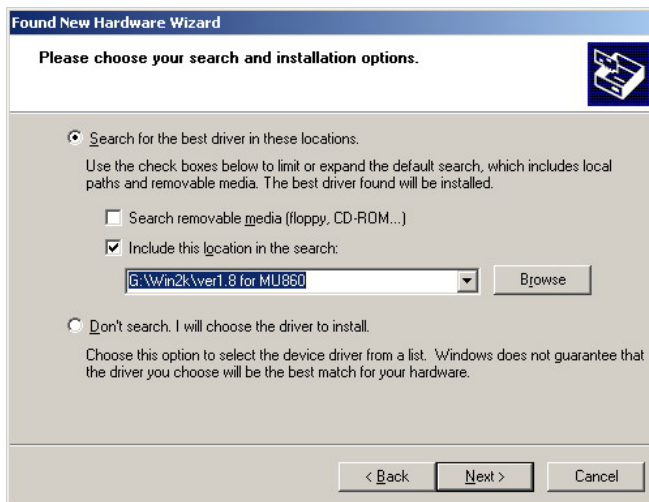
5. Wait while the driver software is installed. The next window shows the model number of the board, and indicates that Windows has completed the driver installation. Click on **Finish** to continue with the rest of the installation procedure.



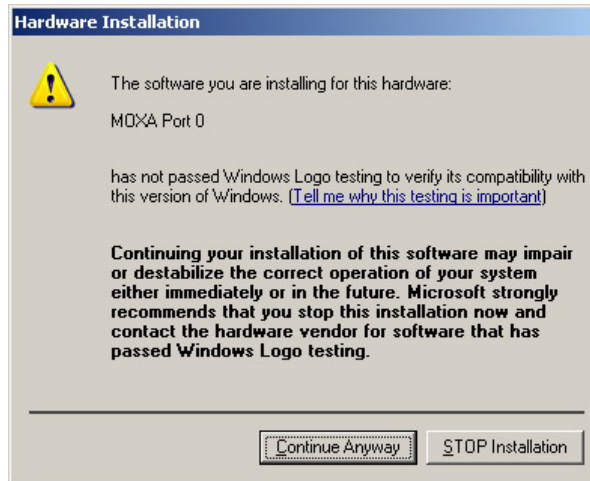
- The **Found New Hardware Wizard** window will open to help you install the driver for **MOXA Port 0**. Select **Install from a list or specific location (Advanced)**. Click on **Next** to continue.



- Select **Search for the best driver in these locations.**, check **Include this location in the search**, and then click on **Browse**. You should be able to locate the **\Software\Win2K-XP-2003** folder on the software CD. Click on **Next** to continue.



8. Wait while the installation wizard searches. The next window that opens cautions you that although this software hasn't passed Windows Logo testing, this driver has already been tested and been shown that it can support Windows OS. Click on **Continue Anyway** to proceed.



9. Wait while the port driver is being installed. Click on **Finish** to continue with the rest of the installation procedures.



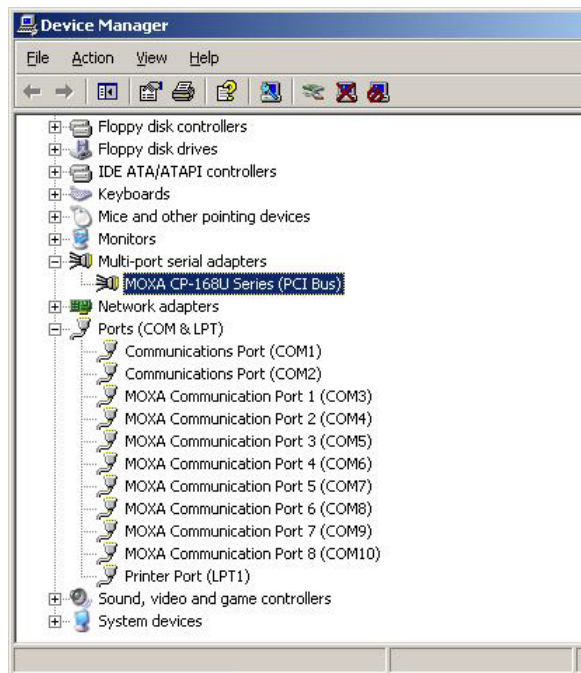
10. Repeat steps 6 to 9, until the port driver installation for every port is completed.

How to Check the Installation

There are three ways to check the installation of the CP-168U Series board.

Using Device Manager

1. Use your mouse to position the cursor over your desktop's **My computer** icon, click the right mouse button, and then select **Properties**.
2. When the **System Properties** window opens, click on the **Hardware** tab, and then click on **Device Manager**.
3. When the **Device Manager** window opens, you will be able to see the model of **MOXA CP-168U Series**, and **MOXA communication ports** under **Ports (COM & LPT)**.



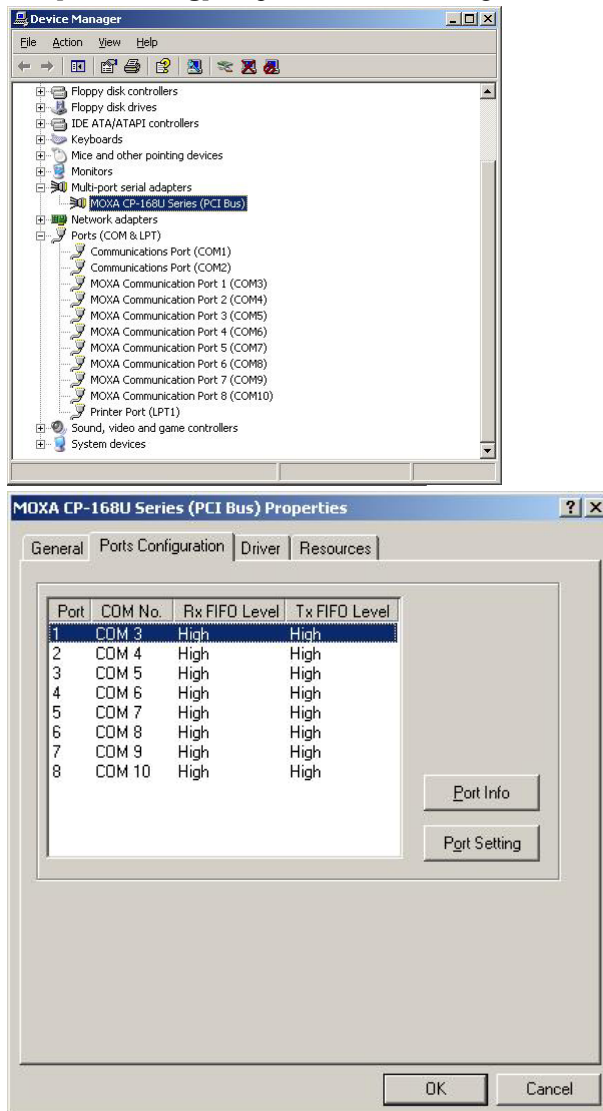
4. If there are any special marks, such as a question mark or an exclamation mark in front of the icons, the installation of the board or the ports was not successful. Examine the **Event Log** for details.

Port Configuration

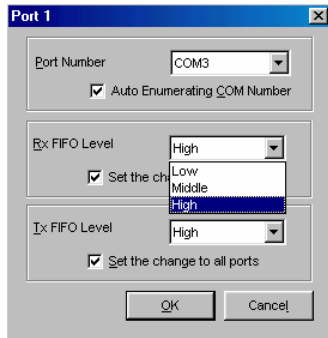
After the driver is installed, the MOXA CP-168U Installation dialog box will be displayed, and the system will map the ports automatically.

If one MOXA CP-168U board was installed previously, and another MOXA CP-168U board is added, the system will prompt you to take care of port configuration, which is discussed in this section.

1. Click on a specific port from the **CP-168U Series Installation** window, and then click on **[Port Setting]** to open the **Port X** dialog box.



2. Select a COM number for the port from the **Port Number** pull-down list.
3. Check the **Auto Enumerating COM Number** check-box to have subsequent ports mapped to continuous COM numbers. For example, if COM 3 is assigned to Port 1, then COM 4 will be automatically assigned to Port 2.
4. Select an Rx FIFO Trigger from the Rx FIFO Level pull-down list. Rx FIFO trigger levels from High to Low are available, with a default value is High Level (120 bytes). Check **Set the change to all ports** check-box to apply the just defined Rx FIFO Trigger to all ports.
5. Select a Tx FIFO Size from the Tx FIFO Level pull-down list. Tx FIFO Level from High to Low are available, with a default value is High Level (128 bytes). Check **Set the change to all ports** check-box to apply the just defined Tx FIFO Size to all ports.



	CP-104UL v2		CP-104UL v1	
	Tx FIFO	Rx FIFO	Tx FIFO	Rx FIFO
High	128	120	64	56
Middle	64	60	32	28
Low	1	1	1	1

Unit: Bytes

- Click **[OK]** in the **Port X** dialog box to confirm the port settings, and then click **[OK]** in the **Property** dialog box to complete the port settings.

Using PComm

The PComm Diagnostic program is a very useful tool for checking the status of MOXA's multiport boards. It provides internal and external testing of IRQ, TxD/RxD, UART, CTS/RTS, DTR/DSR, DTR/DCD, etc. This program can be used to make sure that MOXA's boards and ports are working properly.

To start this program, click on **Start → Programs → PComm Lite 2000 → PComm Diagnostic**.

NOTE: If you do not have the PComm software, you can download the free version from Moxa's website at www.moxa.com.

Using Event Log

To use Event Log to check MOXA boards, click **Start → Settings → Control Panel → Administrative Tools → Event Viewer** to enter the **Event Viewer** program. You can find the latest information messages relevant to MOXA's drivers under **System** category.

Windows 2000/XP

Windows 2000/XP supports up to 256 serial ports, from COM1 to COM256. To fully utilize Windows 2000/XP's multi-process and multi-thread advanced features, pure 32-bit Windows 2000/XP device drivers were developed for MOXA multiport boards. The drivers conform to the Win32 COMM API standard.

The Windows 2000/XP driver for MOXA's multiport serial boards supports the following products:

- Universal PCI Boards: CP-168U, CP-104UL, CP-104JU, CP-134U, CP-134U-I, CP-132UL, CP-132UI
- PCI Boards: C168H/PCI, C104H/PCI, C104HS/PCI, CP-114, CP-114I, CP-114S, CP-114IS, CP-132, CP-132I, CP-132S, CP-132IS
- ISA Boards: C168H, C168HS, C168P, C104H, C104HS, C104P, CI-104J, CI-104JS, CI-134, CI-134I, CI-134IS, CI-132, CI-132I, CI-132IS
- cPCI Boards: CT-114I

The following steps are using CP-168U as an example.

Installing the Driver

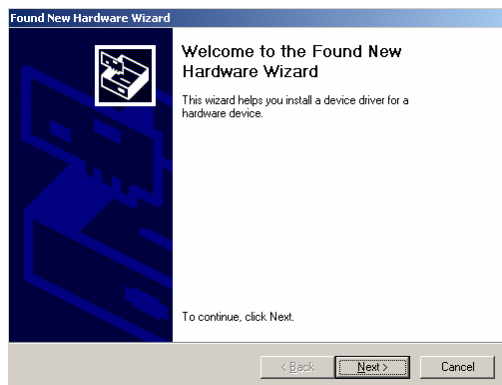
The following procedure shows how to install the CP-168U driver for the first time under Windows 2000 and Windows XP. First make sure the board or boards have already been plugged into the system's PCI or PCI-X slot(s).

Windows 2000

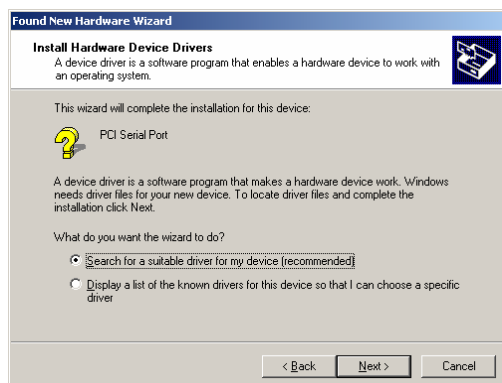
1. Windows 2000 can auto-detect new devices, and activate the Found New Hardware function to install a device driver for Plug and Play devices.



2. Click on **Next** to continue.



3. Select **Search for a suitable driver...** and then click on **Next** to continue.



4. Select **Specify a location** and then click on **Next** to continue.

Windows XP

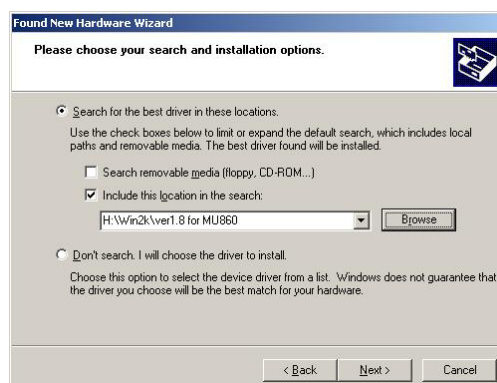
1. Windows XP can auto-detect new devices, and activate the Found New Hardware function to install a device driver for Plug and Play devices.



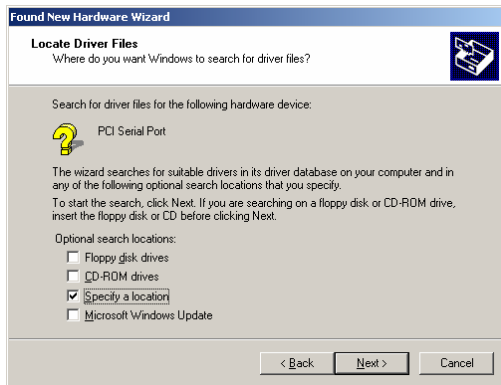
2. Select **Install from a list or specific location**, click on **Next** to continue.



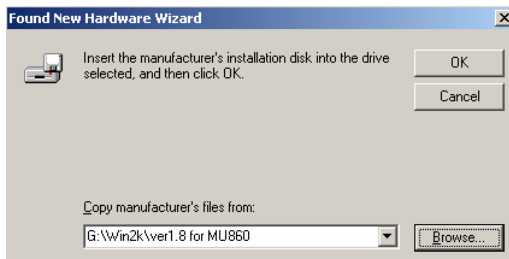
3. Checkmark **Include this location in the search**, and then click on **Browse**. You should locate the **Software\Win2K-XP-2003** folder on the software CD. Click on **Next** to continue.



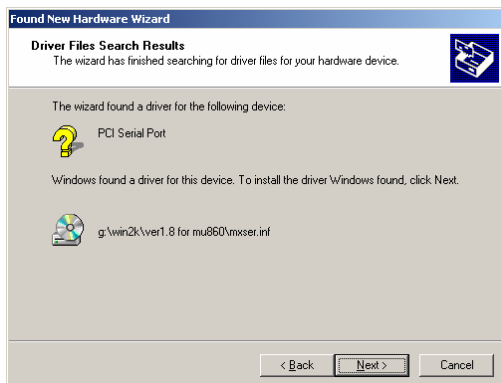
4. Wait while the driver software is installed.



5. Insert the Moxa Driver CD into the CD-ROM drive, and then specify the location of the file as `\Software\Win2K-XP-2003` as shown below (change the drive letter if needed). Click **OK** to continue.



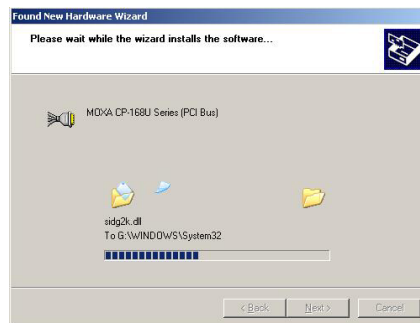
6. Click **Next** to copy the driver files to your system.



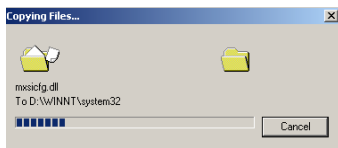
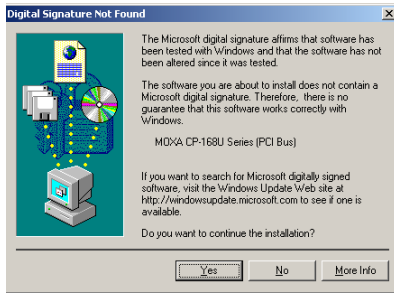
7. Wait while the installation wizard searches. The next window that opens cautions you that although this software hasn't passed Windows Logo testing, this driver has already been tested and been shown that it can support Windows OS. Click on **Continue Anyway** to proceed.



5. Wait while the installation wizard searches. The next window that opens cautions you that although this software hasn't passed Windows Logo testing, this driver has already been tested and been shown that it can support Windows OS. Click on **Continue Anyway** to proceed.



6. The next window shows the model number of the board, and indicates that Windows has completed the driver installation. Click on **Finish** to continue with the rest of the installation procedure.



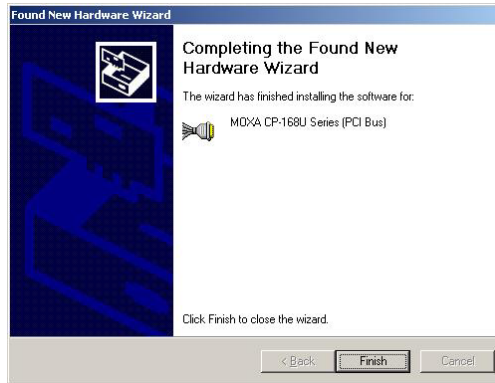
- The next window shows the model number of the board, and indicates that Windows has completed the driver installation. Click on **Finish** to continue with the rest of the installation procedure.



- The next **Welcome to the Found New Hardware Wizard** window to open starts the port installation stage. Click on **Next** to continue.



- Select **Search for a suitable driver for my**



- The next **Welcome to the Found New Hardware Wizard** window that opens starts the port installation procedure. Select **Install the software from a specific location** and then click on **Next** to continue.

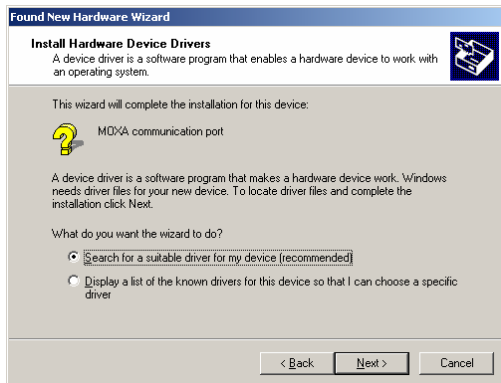


- Input the location of the driver in the text input box, or use the **Browse** button to locate the appropriate folder.



- Wait while the installation wizard searches. The next window that opens cautions you that although this software hasn't passed

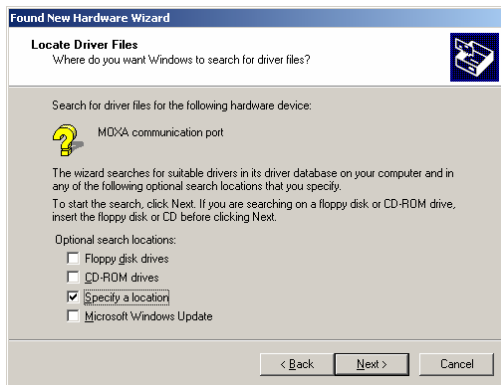
device [recommended], and then click on **Next** to continue.



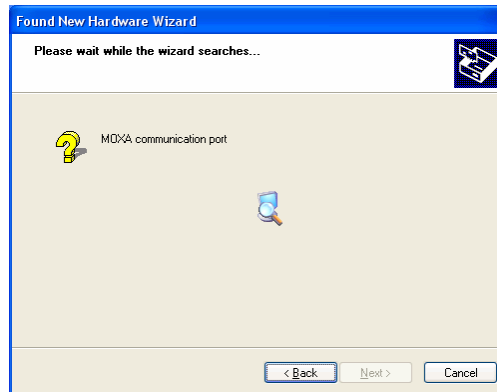
Windows Logo testing, this driver has already been tested and been shown that it can support Windows OS. Click on **Continue Anyway** to proceed.



11. Select **Specify a location** and then click on **Next** to continue.



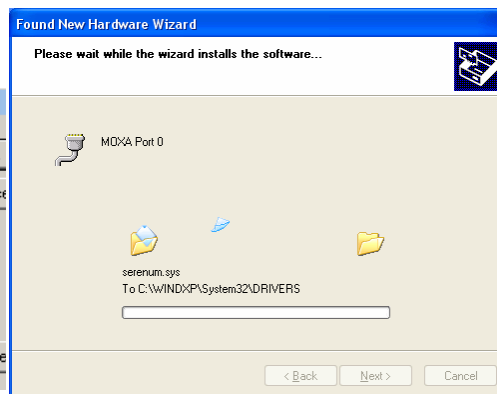
10. Wait while the installation wizard searches.



12. Insert the Moxa Driver CD into the CD-ROM drive, and then specify the location of the file as **SoftwareWin2K-XP-2003** as shown below (change the drive letter, if needed). Click **OK** to continue.

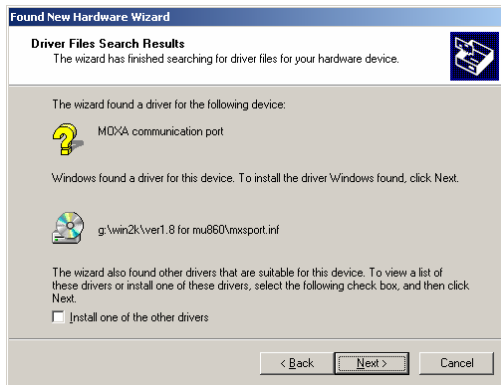


11. Wait while the wizard installs the software.



13. Click on **Next** to continue with the installation.

12. After all files have been copied to the system, the **Completing the Found New Hardware Wizard** window will open to indicate that it has finished installing "Port 0." Click on



Finish to install the board's second port.



14. After all files have been copied to the system, the **Completing the Found New Hardware Wizard** window will open to indicate that it has finished installing “Port 0.” Click on **Finish** to install the board's second port.

13. Repeat the above procedure (Step 7 to Step 12) for the rest of the board's ports. The last window to open completes installation of Port 7.



15. Repeat the above procedure (Step 9 to Step 14) for the rest of the board's ports. The last window to open completes installation of Port 7.

How to Check the Installation

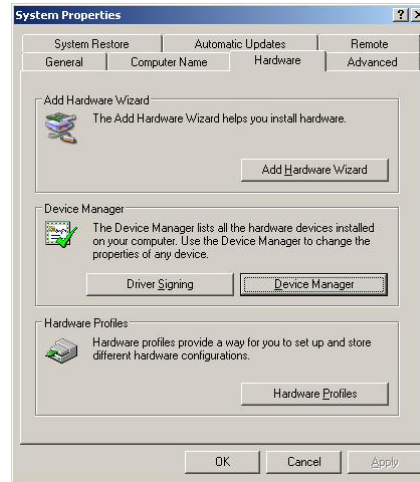
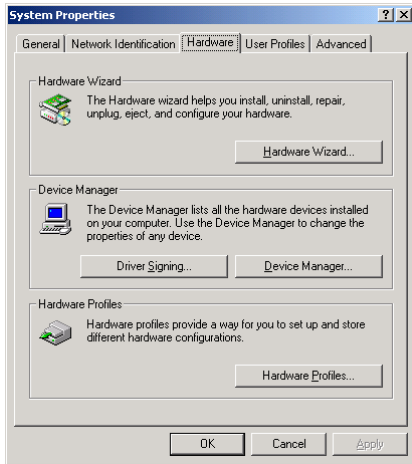
There are three ways to check the installation of the CP-168U Series board.

Device Manager

You can check the installation of the board by selecting **Start → Settings → Control Panel → System**, select the **Hardware** tab, and then click on the **Device Manager** button.

Windows 2000

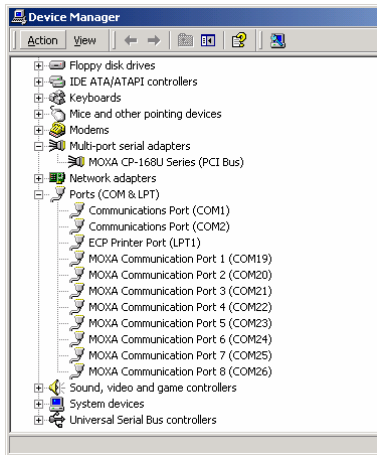
Windows XP



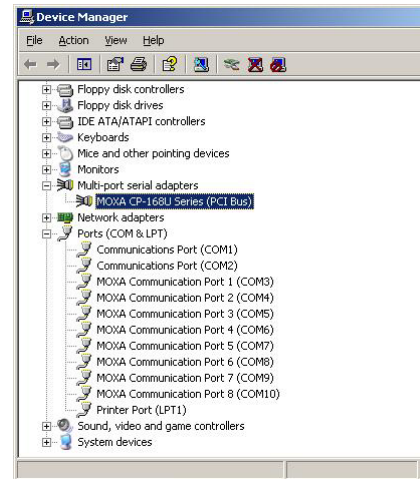
If the driver installation was successful, you will be able to see the model number of the CP-168U board listed under **Multi-port serial adapters**.

You may also expand the **Ports (COM & LPT)** item to check the status of the COM ports. If you see a question mark on top of the icon, then the installation might have a problem. Check the Event Log to determine the reason for the problem.

Windows 2000



Windows XP



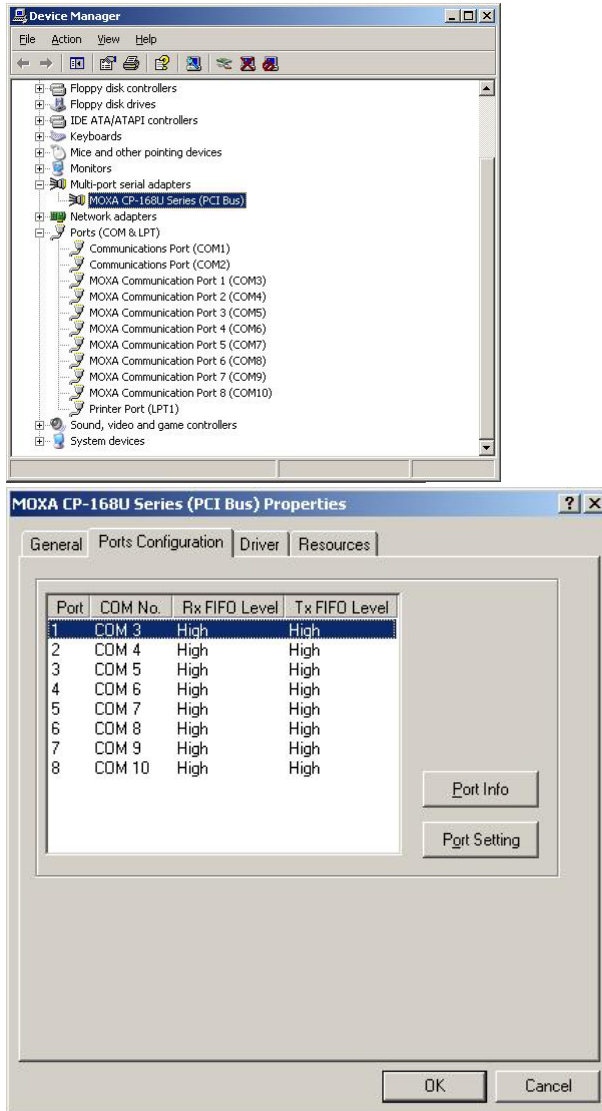
Port Configuration

After the driver is installed, the MOXA CP-168U Installation dialog box will be displayed, and the system will map the ports automatically.

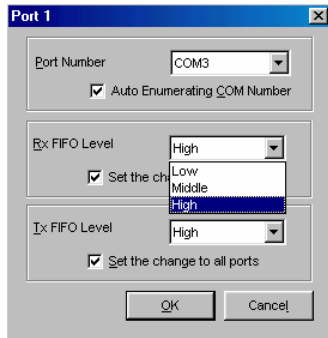
If one MOXA CP-168U board was installed previously, and another MOXA CP-168U board is

added, the system will prompt you to take care of port configuration, which is discussed in this section.

1. Click on a specific port from the **CP-168U Series Installation** window, and then click on [**Port Setting**] to open the **Port X** dialog box.



2. Select a COM number for the port from the Port Number pull-down list.
3. Check the Auto Enumerating COM Number check-box to have subsequent ports mapped to continuous COM numbers. For example, if COM 3 is assigned to Port 1, then COM 4 will be automatically assigned to Port 2.
4. Select an Rx FIFO Trigger from the Rx FIFO Level pull-down list. Rx FIFO trigger levels from High to Low are available, with a default value is High Level (120 bytes). Check Set the change to all ports check-box to apply the just defined Rx FIFO Trigger to all ports.
5. Select a Tx FIFO Size from the Tx FIFO Level pull-down list. Tx FIFO Level from High to Low are available, with a default value is High Level (128 bytes). Check Set the change to all ports check-box to apply the just defined Tx FIFO Size to all ports.



	CP-104UL v2		CP-104UL v1	
	Tx FIFO	Rx FIFO	Tx FIFO	Rx FIFO
High	128	120	64	56
Middle	64	60	32	28
Low	1	1	1	1

Unit: Bytes

6. Click [OK] in the Port X dialog box to confirm the port settings, and then click [OK] in the Property dialog box to complete the port settings.

MOXA PComm Utility

This utility, which comes with MOXA PComm Lite, provides a convenient way to diagnose problems with Moxa boards, and provides internal and external testing of IRQ, TxD/RxD, UART, CTS/RTS, DTR/DSR, DTR/DCD, etc. This program can verify the correct operation of both the H/W and S/W for all Moxa boards and ports.

Event Log

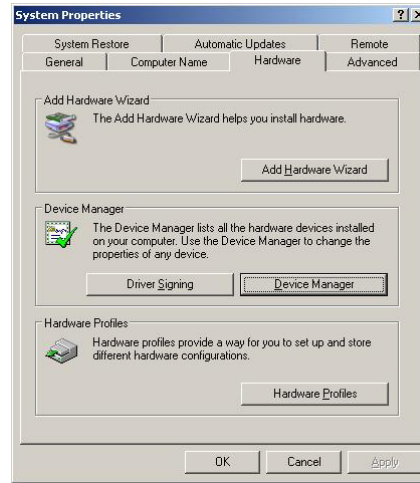
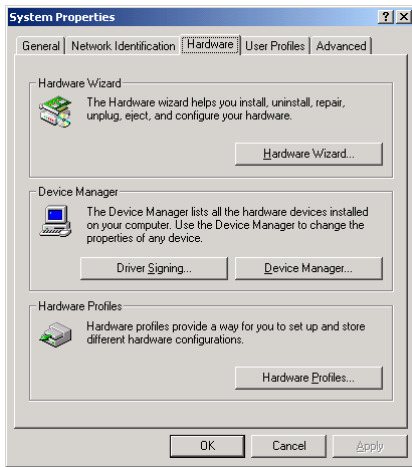
To check the Event Log for MOXA boards, click **Start → Settings → Control Panel → Administrative Tools → Event Viewer**, to enter the Event Viewer program. You may find the latest information message relevant to the Moxa driver in the system category.

Removing the Driver

You can uninstall the board by first selecting **Start → Settings → Control Panel → System**.

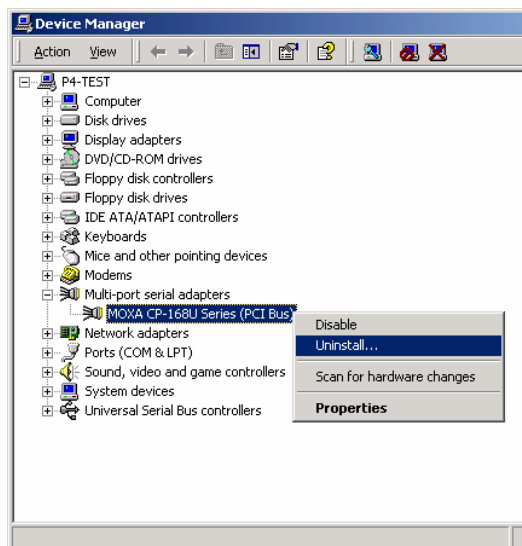
Windows 2000

Windows XP

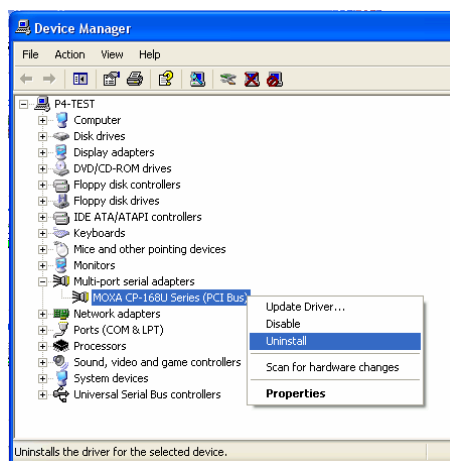


Select the **Hardware** tab, and then click on **Device Manager**. Use the mouse to place the cursor over the CP-168U Series board under Multiport serial adapters, and then click the right mouse button. Select the **Uninstall...** option.

Windows 2000



Windows XP

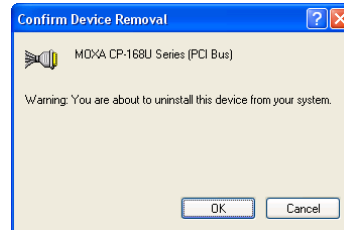


Click **OK** to proceed with the un-installation of the board.

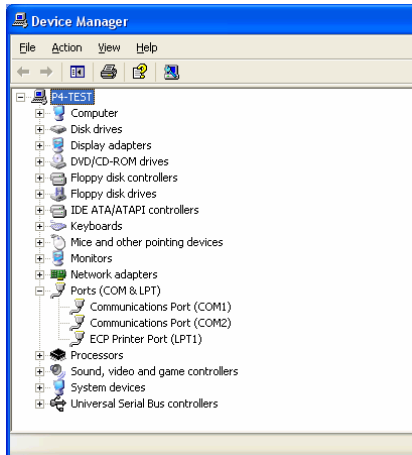
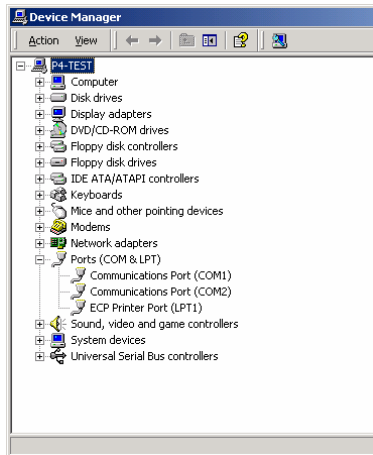
Windows 2000



Windows XP



The **Device Manager** window will automatically refresh to show that the driver and ports for the CP-168U Series board have been removed.



Windows 95/98

The Windows 95/98 driver supports up to 128 serial ports, from COM1 to COM128. To fully utilize the advanced multi-process and multi-thread features of Windows 95/98, pure 32-bit Windows 95/98 virtual device port drivers (VxD) compliant with communication drivers (VCOMM) have been developed for the Smartio CP-168U and other MOXA multiport boards. The drivers conform to the Win32 COMM API standard.

The Windows 95/98 driver for MOXA's multiport serial boards supports the following products:

- Universal PCI Boards: CP-168U, CP-104UL, CP-104JU, CP-134U, CP-134U-I, CP-132UL, CP-132UI
- PCI Boards: C168H/PCI, C104H/PCI, C104HS/PCI, CP-114, CP-114I, CP-114S, CP-114IS, CP-132, CP-132I, CP-132S, CP-132IS
- ISA Boards: C168H, C168HS, C168P, C104H, C104HS, C104P, CI-104J, CI-104JS, CI-134, CI-134I, CI-134IS, CI-132, CI-132I, CI-132IS
- cPCI Boards: CT-114I

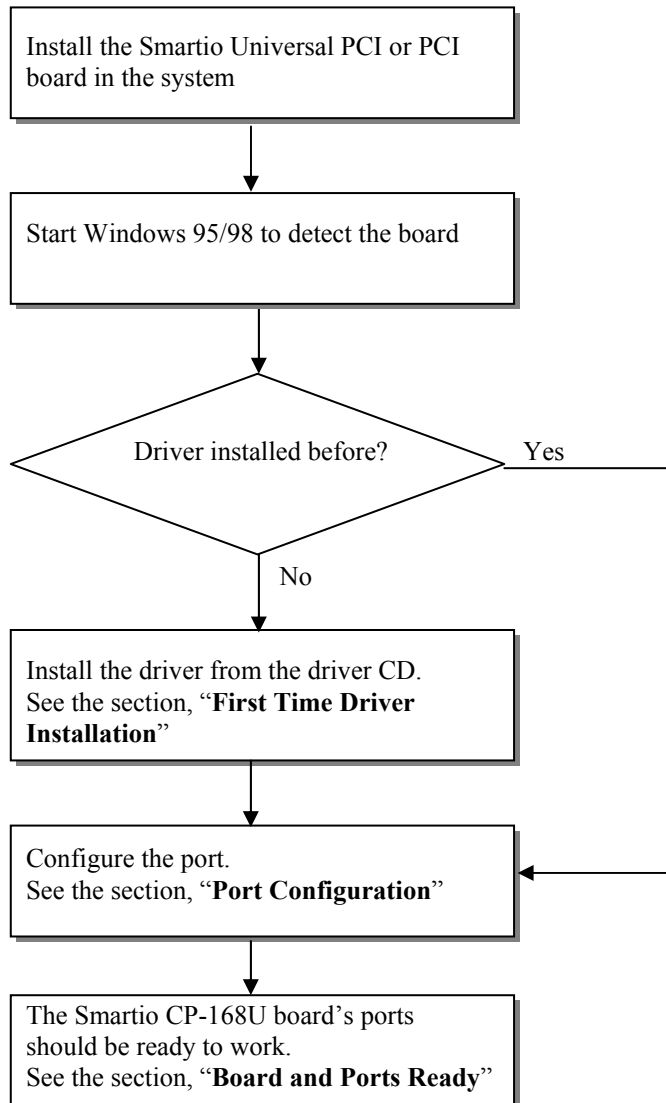
The following steps are using CP-168U as an example.

Installing the Driver

Thanks to Windows 95/98's Plug and Play capability, you can easily plug the Smartio CP-168U board into an available PCI slot, and then get to work right away with very little installation effort. Windows 95/98 will automatically detect the presence of the new board, and prompt you to install the software driver. You simply need to have the driver CD available to complete the installation process.

A maximum of 4 Smartio CP-168U boards can be installed in one system, provided sufficient I/O address and IRQ number resources are available.

The following flow chart illustrates the driver installation stages of the Smartio CP-168U boards. Each stage will be discussed later in more detail.



First Time Driver Installation

This stage gives the steps for installing the Smartio CP-168U board driver for the first time. The installation of the Smartio CP-168U board for Windows 95 and Windows 98 are slightly different and will be described in two columns. Follow the steps in the left column for Windows 95 or the right column for Windows 98.

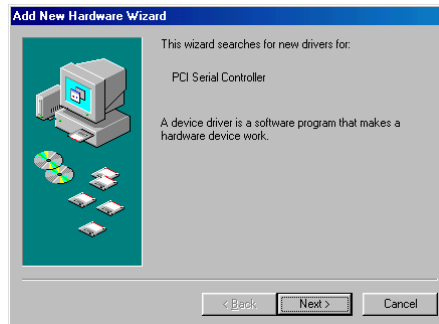
If one MOXA CP-168U board was previously installed and another MOXA CP-168U board is plugged in, the system will prompt you to skip this stage, and take care of Port Configuration, which is discussed in the next section.

1. Upon detecting the first new Smartio CP-168U Series board, Windows 95/98 will automatically display a **New hardware found** message box, and then display the following dialog boxes. Click the **Next** button to proceed.

Windows 95



Windows 98



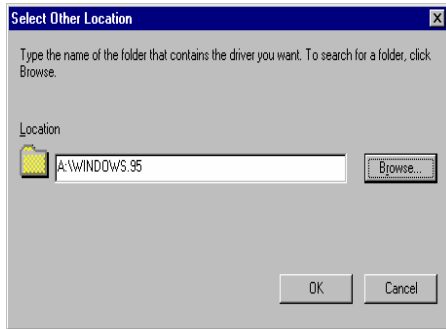
2. Click on **[Other Locations]**.



2. Select **[Display a list...]** and then click on **[Next]**.



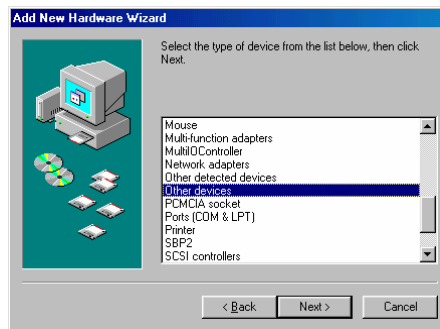
3. Type E:\Software\Win9x\Windows.95 in the **Location** input box, and then click **[OK]** from the **Select Other Location** window. The system will start reading the files from the CD.



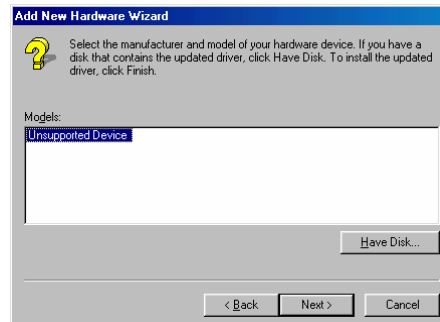
4. Click on **[Finish]**.



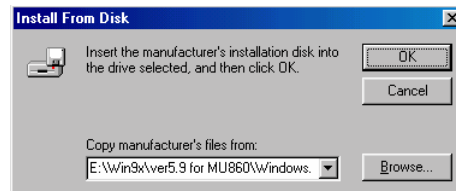
3. Select **Other Devices** and then click on **[Next]**.



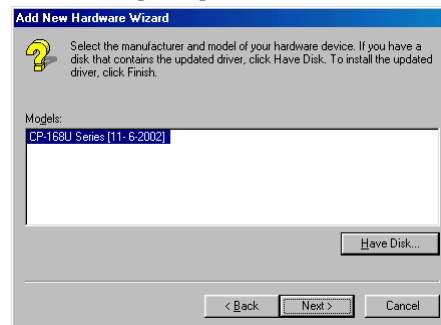
4. Click on **[Have Disk]**.



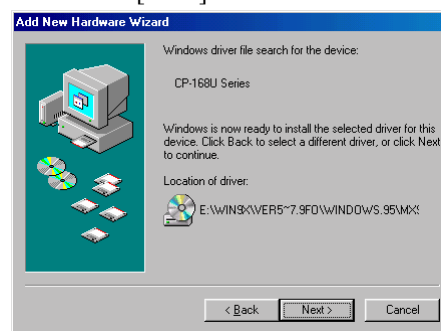
5. Type E:\Win9x\Windows.95 and click **[OK]**. The system will start reading the files from the CD.



6. Click on [Next].



7. Click on [Next].



Board and Port Ready

Board and Port Ready for Windows 95 and Windows 98 are slightly different. In finishing this stage, the driver installation will be complete.

Windows 95

After the port configuration, you can immediately use the COM ports of the Smartio CP-168U board without restarting Windows 95.

Windows 98

After the port configuration, click on [Finish]. The COM ports of the Smartio CP-168U board can be used without restarting Windows 98.



NOTE

If an error message similar to “CP-168U board(BusNo=x, DevNo=x, Port1=COMx) interrupt number is invalid!” pops up, refer to the “Troubleshooting” chapter for solutions.

If you want to add more boards after installing the driver, simply plug the additional Smartio CP-168U board into an empty PCI slot, and Windows 95/98 will automatically detect the newly plugged board. Skip to Port Configuration to take care of port settings.

This completes the installation of the Smartio CP-168U board driver, including board and port configuration. However, if you need to make changes to the board and port configuration, refer to the next section, “Configuring Board and Port,” for configuration details.

Once the board and the driver are installed and the driver restarts successfully, you can start to develop applications with the *PComm* library (see “Serial Programming Tools”) or the Microsoft Win32 API. You can also use applications such as Terminal Emulator (see “Serial Programming Tools”), a *PComm* utility, or HyperTerminal, to transmit/receive data, as well as Remote Access Service to provide dial-up networking capabilities.

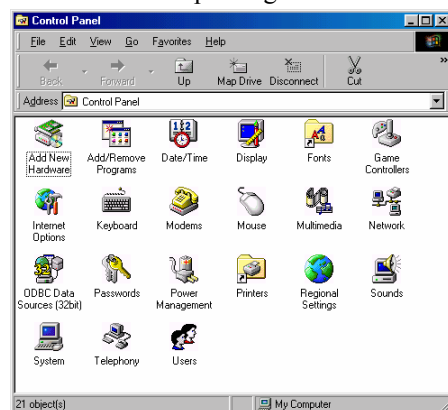
Configuring the Board and Ports

Follow the procedures given below to re-configure the COM number for the ports of installed boards and drivers under Windows 95/98.

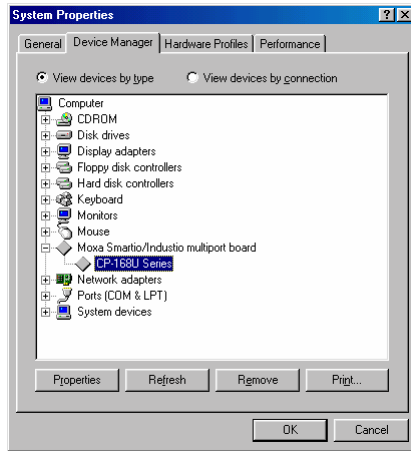
In addition to following the procedures listed below, you may also click on [Start] → [Programs] → [MOXA Utility] → [MOXA Smartio/Industio Configuration Panel] → [Property] → [Port Setting].

Since this is a Universal PCI or PCI board, once a new board is added, or an existing board is removed, the board’s configuration will be automatically added or removed by the operating system when you restart the PC.

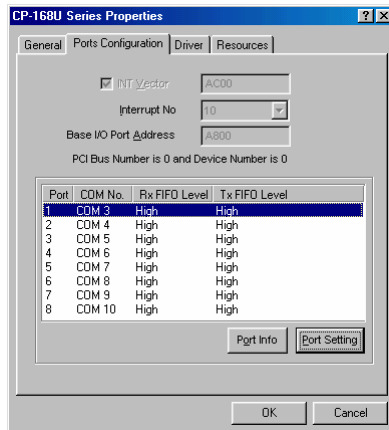
1. Open the [Control Panel], click on the [System] icon, select the [Device Manager] tab, and then click on the plus sign to the left of **Moxa Smartio/Industio multiport board**.



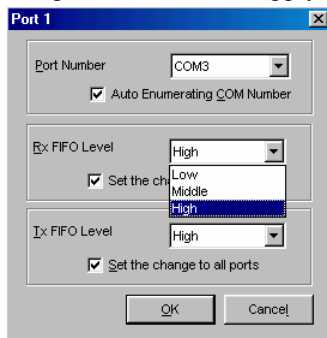
- Click on the desired CP-168U board, and then click on [Properties].



- Select the [Ports Configuration] tab, click on the specific port, and then click on the [Port Setting] button.



- Check the Auto Enumerating COM Name check-box to assign continuous COM numbers for subsequent ports. For example, if COM3 is assigned to Port 1, then COM4 will be automatically assigned to Port 2.
- Select an Rx FIFO Trigger from the Rx FIFO Level pull-down list. Rx FIFO trigger levels from High to Low are available, with a default value is High Level (120 bytes). Check Set the change to all ports check-box to apply the just defined Rx FIFO Trigger to all ports.
- Select a Tx FIFO Size from the Tx FIFO Level pull-down list. Tx FIFO Level from High to Low are available, with a default value is High Level (128 bytes). Check Set the change to all ports check-box to apply the just defined Tx FIFO Size to all ports.



	CP-104UL v2		CP-104UL v1	
	Tx FIFO	Rx FIFO	Tx FIFO	Rx FIFO
High	128	120	64	56
Middle	64	60	32	28
Low	1	1	1	1

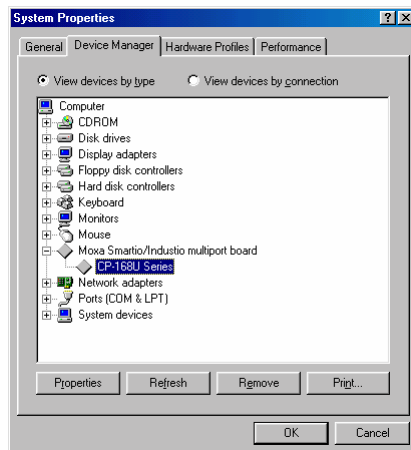
Unit: Bytes

-
7. To complete the update, click [OK] in the Port X dialog box, click [OK] in the CP-168U board Properties dialog box, and then click [OK] on the Device Manager tab.
 8. Restart the system to activate the latest configuration.

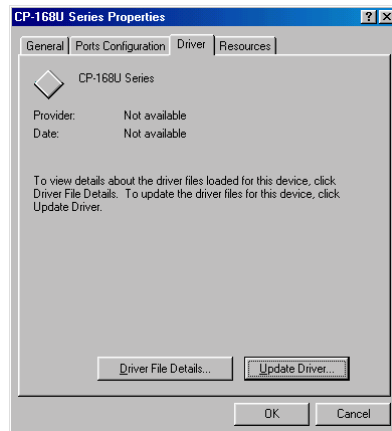
Updating the Driver

This section shows how to update the Windows 95/98 driver.

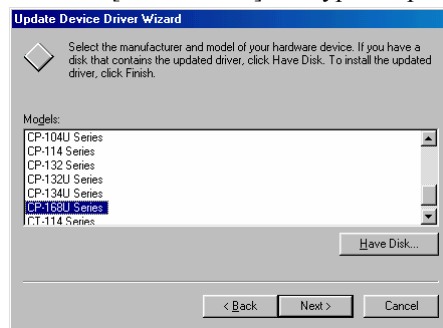
1. Open [Control Panel], click on the [System] icon, and select the [Device Manager] tab.
2. Click on the MOXA CP-168U board and then click on [Properties].



3. Select the [Driver] tab, and click on [Update Driver...].



4. Click on [Have Disk...] and type the path of the new driver.

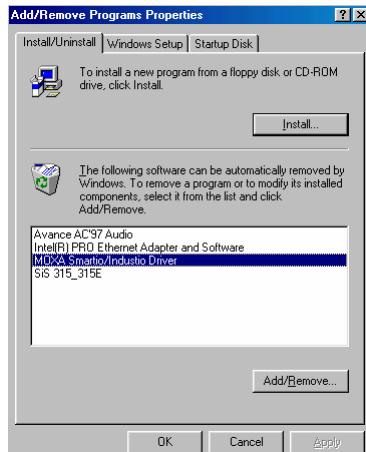


5. Insert the driver CD into the CD-ROM drive, and then click [OK] in the Install from Disk window.
6. The system will automatically prompt you to restart the system. Click [Yes] to restart the system, or [No] if you want to reboot the system later.

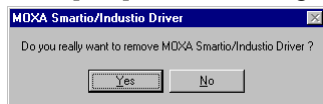
Removing the Driver

This section explains how to remove the Smartio CP-168U board driver.

1. Open the [Control Panel], double click the [Add/Remove Programs] icon, and then select the [Install/Uninstall] tab.
2. Click on the MOXA Smartio/Industio Driver option and then click on [Add/Remove] to start the driver removal process.



3. Click [Yes] in the following message box to confirm that you want to remove the driver.



4. Click [OK] in the Add/Remove Programs Properties dialog box.



Windows NT

Windows NT supports up to 256 serial ports, from COM1 to COM256. To fully utilize Windows NT's multi-process and multi-thread advanced features, pure 32-bit Windows NT device drivers were developed for the Smartio CP-168U board and other MOXA multiport boards. The drivers conform to the Win32 COMM API standard.

The Windows NT driver for MOXA's multiport serial boards supports the following products:

- Universal PCI Boards: CP-168U, CP-104UL, CP-104JU, CP-134U, CP-134U-I, CP-132UL, CP-132UI
- PCI Boards: C168H/PCI, C104H/PCI, C104HS/PCI, CP-114, CP-114I, CP-114S, CP-114IS, CP-132, CP-132I, CP-132S, CP-132IS
- ISA Boards: C168H, C168HS, C168P, C104H, C104HS, C104P, CI-104J, CI-104JS, CI-134, CI-134I, CI-134IS, CI-132, CI-132I, CI-132IS
- cPCI Boards: CT-114I

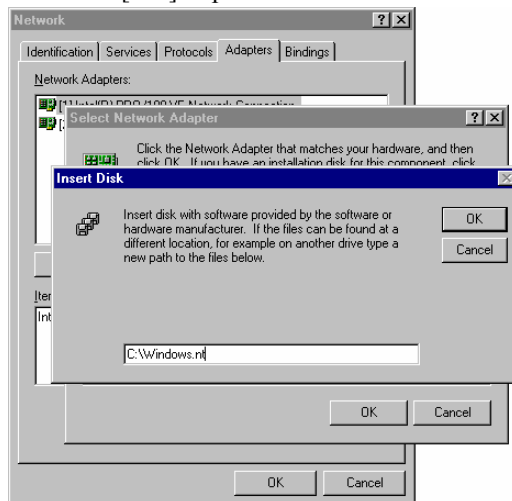
The following steps are using CP-168U as an example.

Installing the Driver

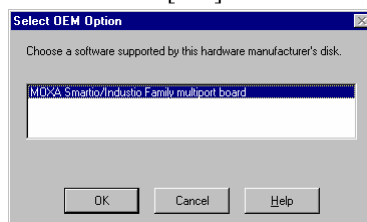
First Time Driver Installation

The following procedure shows how to install the Smartio CP-168U driver for the first time. First make sure the board or boards are already plugged into the system's PCI slot(s).

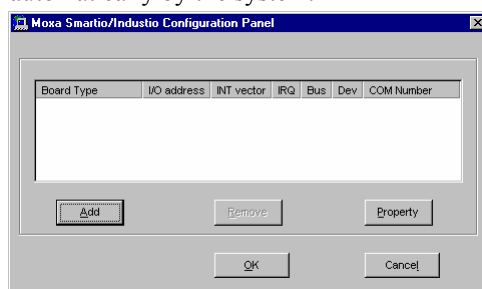
1. Log into NT as Administrator.
2. Copy the folder Windows.nt located under \Software\WinNT on the software CD, to your computer's hard disk (under the C: drive, for example).
3. Open the [Control Panel], click the [Network] icon, and then select the [Adapters] tab.
4. Click the [Add] button, and then the [Have Disk...] button in the [Select Network Adapter] dialog box.
5. Specify the exact path of the driver diskette, C:\Windows.nt in the example shown here, and then click [OK] to proceed.



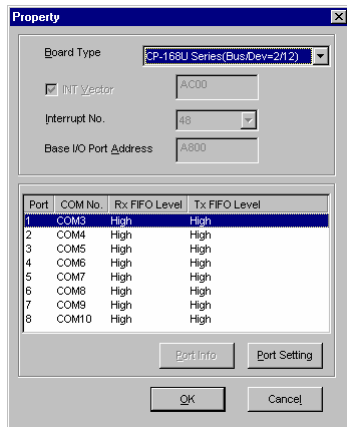
6. Select MOXA Smartio/Industio Family multiport board in Select OEM Option dialog box, and then click [OK] to start installing the driver.



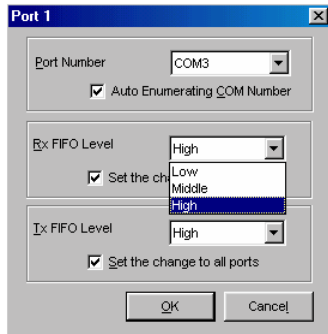
7. The Moxa Smartio/Industio Configuration Panel dialog box appears. Click the [Add] button to open the Property dialog box to change port settings and advanced FIFO configuration done automatically by the system.



8. Select the just installed CP-168U board from the Board Type pull-down list, click on a specific port item, and then click on the [Port Setting] button to open the Port X window.



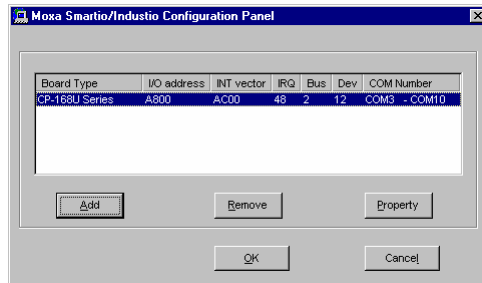
9. Select a COM number for the specific port from Port Number pull-down list.
10. Check the Auto Enumerating COM Number check-box to have subsequent ports mapped to continuous COM numbers. For example, if COM3 is assigned to Port 1, then COM4 will be automatically assigned to Port 2.
11. Select an Rx FIFO Trigger from the Rx FIFO Level pull-down list. Rx FIFO trigger levels from High to Low are available, with a default value is High Level (120 bytes). Check Set the change to all ports check-box to apply the just defined Rx FIFO Trigger to all ports.
12. Select a Tx FIFO Size from the Tx FIFO Level pull-down list. Tx FIFO Level from High to Low are available, with a default value is High Level (128 bytes). Check Set the change to all ports check-box to apply the just defined Tx FIFO Size to all ports.



	CP-104UL v2		CP-104UL v1	
	Tx FIFO	Rx FIFO	Tx FIFO	Rx FIFO
High	128	120	64	56
Middle	64	60	32	28
Low	1	1	1	1

Unit: Bytes

13. Click [OK] in the Port X dialog box to confirm the port settings, and then click [OK] in the Property dialog box to complete the port settings and return to the MOXA Smartio/Industio Configuration Panel dialog box. The configured CP-168U board will now appear in the MOXA Smartio/Industio Configuration Panel dialog box, as shown below.



14. Click [OK] in the **MOXA Smartio/Industio Configuration Panel** to return to the Network dialog box, and then click [OK] to exit the **Network** dialog box.
15. Restart the PC.

NOTE The driver configuration will NOT take effect until you restart the PC.

NOTE Double check that all Smartio CP-168U board components—the control board—are connected and fastened tightly to make sure that the system and the driver can start up successfully.

Once the system restarts, you may check the event log issued by the MOXA driver to see if the board's ports have been initialized successfully.

Enter the [Administrative] group, click the [Event Viewer] icon, and then select [Log] and [System] to check a message similar to “**MOXA CP-168U board, with first serial port COM3, has been enabled**” for each newly configured board.

NOTE If an error message similar to “Cannot find any configured MOXA Smartio/Industio series board!” pops up, refer to the Troubleshooting chapter for possible solutions.

Once the board and the driver are installed and the driver restarts successfully, you can start to develop applications with the *PComm* library (see “**Serial Programming Tools**”) or the Microsoft Win32 API. You can also use applications such as Terminal Emulator (see “**Serial Programming Tools**”), a *PComm* utility, or HyperTerminal, to transmit/receive data, as well as Remote Access Service to provide dial-up networking capabilities.

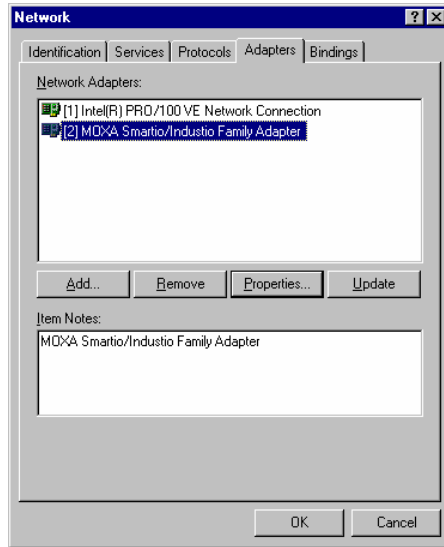
Configuring the Board and Ports

Re-Configuring Port Settings

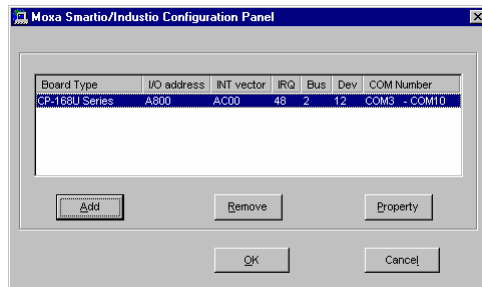
If the driver is already installed, and you only wish to re-configure the ports, refer to the following procedures. In addition to the procedures listed below, you may also click on [Start] → [Programs]

→ [MOXA Utility] → [MOXA Smartio/Industio Configuration Panel] → [Property], and then refer to the instructions in the previous section, “**First Time Driver Installation.**”

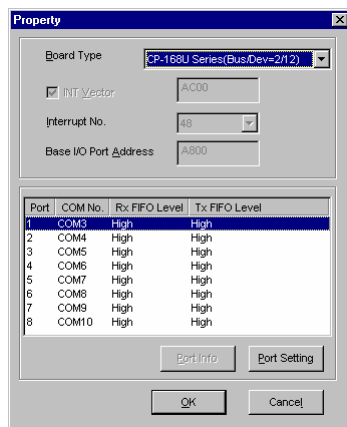
1. Open the [Control Panel], click on the [Network] icon, and select the [Adapters] tab.
2. Click on MOXA Smartio/Industio Family Adapter from the Network Adapters list to highlight it, and then click on [Properties] to open the MOXA Smartio/Industio Configuration Panel dialog box to change port settings and advanced FIFO configuration.



3. Click on [Property] from the MOXA Smartio/Industio Configuration Panel to open the Property window.



4. Next, refer to the instructions given in the previous section, “First Time Driver Installation” from the “Windows NT” section.

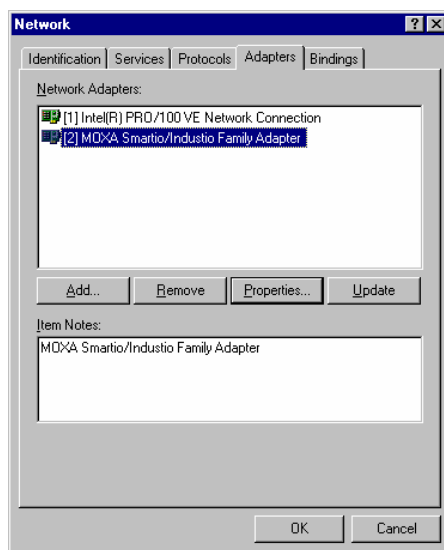


Configuring Another CP-168U Board

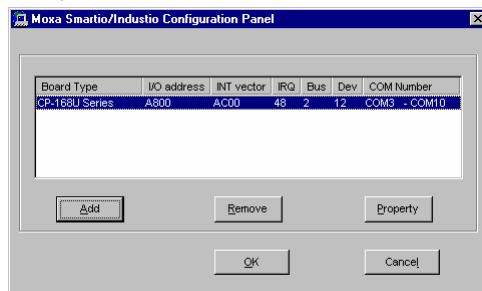
In this section, we explain how to configure another MOXA CP-168U board that is already installed. Up to four CP-168U boards can be installed in one system under Windows NT, provided sufficient system resources are available.

In addition to the procedures listed below, you may also click on [Start] → [Program] → [MOXA Utility] → [MOXA Smartio/Industio Configuration Panel] → [Add], and then refer to the instructions from the previous section, “Installing the Driver.”

1. Open the [Control Panel], click on the [Network] icon, and select the [Adapters] tab.
2. Click on MOXA Smartio/Industio Family Adapter from the Network Adapters list.
3. Click the [Properties] button to open the Moxa Smartio/Industio Configuration Panel dialog box.



4. Next, refer to the instructions from the “First Time Driver Installation” subsection.



Removing an Existing CP-168U Board Configuration

First shut down your PC, and then physically remove the CP-168U board from the PCI or PCI-X slot. The next time you start up the PC, the system will automatically remove the configuration. There is no need to click the Remove button in the Moxa Smartio/Industio Configuration Panel dialog box.

Updating the Driver

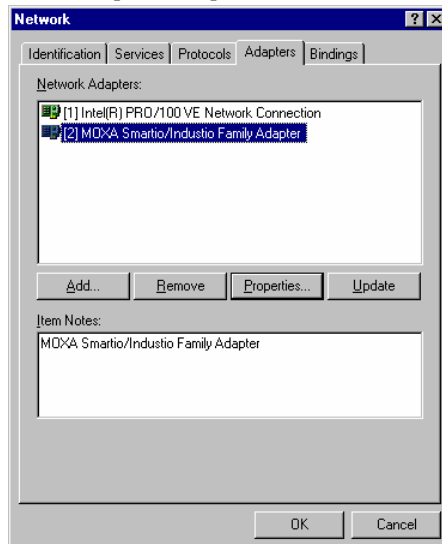
Take the following steps to update the Smartio CP-168U board driver.

1. Open [Control Panel], click on the [Network] icon, and select the [Adapters] tab.
2. Click on MOXA Smartio/Industio Family Adapter from the Network Adapter list.
3. Click the [Remove] button in the Network dialog box.
4. Click the [Close] button in the Network dialog box.
5. Restart the system.
6. Refer to the instructions given in the “First Time Driver Installation” section to install the new driver.

Removing the Driver

To remove the Smartio CP-168U board driver:

1. Open the [Control Panel], click on the [Network] icon, and select the [Adapters] tab.
2. Click on MOXA Smartio/Industio Family Adapter from the Network Adapters list.
3. Click the [Remove] button in the Network dialog box.



4. Click the [Close] button to exit the Network dialog box.
5. Restart the system to activate the new configuration.

DOS

MOXA DOS API-232 is a software package that assists users to develop and/or debug programs for serial communications. This section will show you how to install the package, how to set up the driver, and how to load or unload the driver.

The DOS driver for MOXA's multiport serial boards supports the following products:

- Universal PCI Boards: CP-168U, CP-104UL, CP-104JU, CP-134U, CP-134U-I, CP-132UL, CP-132UI
- PCI Boards: C168H/PCI, C104H/PCI, C104HS/PCI, CP-114, CP-114I, CP-114S, CP-114IS, CP-132, CP-132I, CP-132S, CP-132IS
- ISA Boards: C168H, C168HS, C168P, C104H, C104HS, C104P, CI-104J, CI-104JS, CI-134, CI-134I, CI-134IS, CI-132, CI-132I, CI-132IS
- cPCI Boards: CT-114I

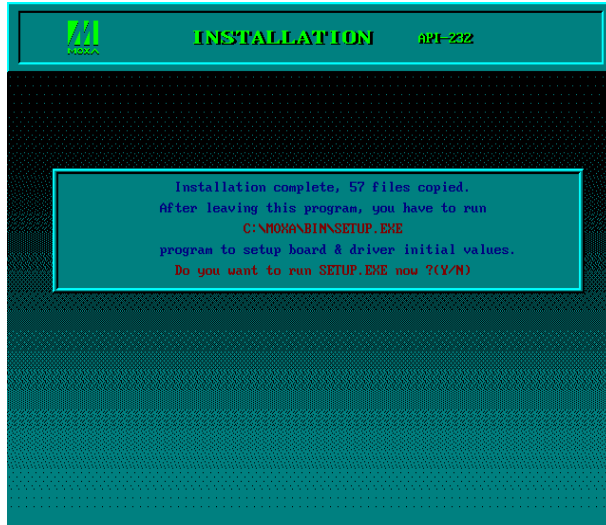
The following Steps are using CP-134U as an example.

Installing the Driver

1. Run the installation program, **DOSINST.EXE** under \Software\DOS on the software CD. Specify the target API-232 directory (e.g. **C:\MOXA**) where the software driver will be copied. Press **F2** to start the installation.



-
2. After the installation is complete, a message window will open to ask if you want to run the **SETUP.EXE** file. It is strongly recommended that you press **Y** to run this **SETUP.EXE** file.



Setting up the Driver

The following steps are using CP-134U Series as an example. This section does not illustrate all the convenient functions of the setup program that you would see during the configuration process. Press **F1** to refer to the on-line help instructions if necessary.

1. Run the **BIN\SETUP.EXE** file.

- Press **Enter** to select the proper model name, in this case, CP-134U Series.



- Press **PgDn** to configure the CP-134U's port settings, including port number, flow control, etc. You can enter/modify each port's settings now. These displayed values are the port's initial values as the driver is loaded.



NOTE Up to now you have completed the configuration for CP-134U Series board. You might skip this step and go directly to step 4 if you need not change any setting or configure any board.

4. Press **F10** to save the modifications and exit the SETUP program.

Legends

Some noticeable fields and functions are explained below.

Port number

This is actually the port ID of each port. The application software will refer to the port by its port number (ID). A duplicated port number is not allowed. That is, each MOXA serial port is referred to as port number in terms of serial programming.

You may map the port number range to the one you prefer between 0 and 255, as long as no port number overlapping condition or port number undefined condition occurs. Generally, you should take the convenience of programming into consideration when specifying the port numbers for the board.

TxD buffer size

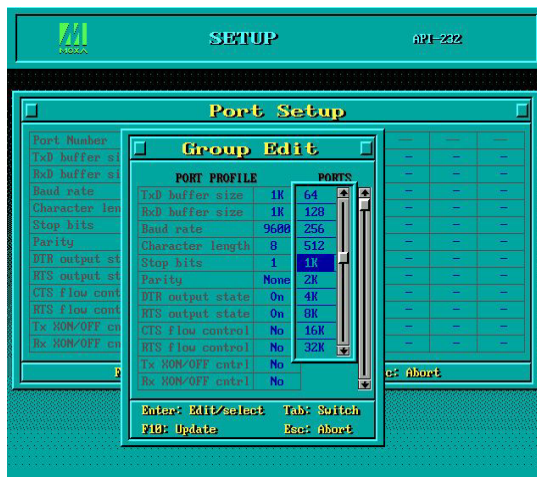
The transmission (output) buffer allocated in the system for each port.

RxD buffer size

The receiving (input) buffer allocated in the system for each port.

F5 Group Edit

This is a convenient function that helps you edit the configuration of several ports at one time as a group.



Loading the Driver

Having completed the setup, now you can load the driver BIN\DP-DRV.EXE at the DOS prompt. The driver will detect the board you installed automatically. If the board(s) is(are) detected, a message similar to below will show:

```
Smartio/Industio Family DOS driver Version 1.5
Setup driver ...
CP-134U series (Bus= x ,Dev=y) : OK!
Device driver setup O.K.
```

It means that the CP-134U Series driver is installed properly. At this point, you are ready to execute applications that support API-232 functions, or start developing applications using API-232 library.

Unloading the Driver

To unload (release) the driver from memory, type DP-DRV/Q at the DOS prompt.

Linux

The Linux driver for MOXA's multiport serial boards supports the following products:

- Universal PCI Boards: CP-168U, CP-104UL, CP-104JU, CP-134U, CP-134U-I, CP-132UL, CP-132UI
- PCI Boards: C168H/PCI, C104H/PCI, C104HS/PCI, CP-114, CP-114I, CP-114S, CP-114IS, CP-132, CP-132I, CP-132S, CP-132IS
- ISA Boards: C168H, C168HS, C168P, C104H, C104HS, C104P, CI-104J, CI-104JS, CI-134, CI-134I, CI-134IS, CI-132, CI-132I, CI-132IS
- cPCI Boards: CT-114I

The following steps are using CP-168U as an example.

Follow the steps below to install the driver under Linux.

1. # mkdir moxa
cd moxa
tar xvfz mxser.tgz
2. #cd mxser
#make clean; make install
3. # cd /moxa/mxser/driver
./msmknod
4. # modprobe mxser

(If you install ISA Boards, please type commend # insmod mxser ioaddr=0x???, 0x???, 0x???, 0x??? <- 1st ISA, 2nd ISA, 3rd ISA, 4th ISA)

Using /lib/modules/2.4.20-8/kernel/drivers/char/mxser.o

Warning: loading /lib/modules/2.4.20-8/kernel/drivers/char/mxser.o will taint the kernel: no license

See <http://www.tux.org/lkml/#export-tainted> for information about tainted modules

MOXA Smartio/Industio family driver version 1.7

Tty devices major number = 30, callout devices major number = 35

Found MOXA CP-168U series board(BusNo=2,DevNo=13)

Module mxser loaded, with warnings

5. You can use Moxa diagnostic utility to verify the driver status.

```
# cd /moxa/mxser/utility/diag
```

```
# ./msdiag
```

```
== MOXA Smartio/Industio Family Multiport Board Status Utility(1.1) ==
```

```
Tty Device Major Number= 30.
```

```
Callout device Major Number= 35.
```

```
Board 1 : CP-168U series (BusNo=2, DevNo=13)
```

```
Port 1: 0xac00, max. baud rate = 230400 bps.
```

```
Port 2: 0xac08, max. baud rate = 230400 bps.
```

```
Port 3: 0xac10, max. baud rate = 230400 bps.
```

```
Port 4: 0xac18, max. baud rate = 230400 bps.
```

```
Port 5: 0xac20, max. baud rate = 230400 bps.
```

```
Port 6: 0xac28, max. baud rate = 230400 bps.
```

```
Port 7: 0xac30, max. baud rate = 230400 bps.
```

```
Port 8: 0xac38, max. baud rate = 230400 bps.
```

6. You can use Moxa terminal utility to test tty port.

```
# cd /moxa/mxser/utility/term
```

```
# ./msterm
```

SCO

The SCO driver for MOXA's multiport serial boards supports the following products:

- **Universal PCI Boards:** CP-168U, CP-104UL, CP-104JU
- **PCI Boards:** C168H/PCI, C104H/PCI, C104HS/PCI
- **ISA Boards:** C168H, C168HS, C168P, C104H, C104HS, C104P, CI-104J, CI-104JS

Follow the steps below to install the driver under SCO. Moxa provide the following SCO Version:

- **SCO Open Server**
- **SCO UnixWare 7**
- **SCO UnixWare 2.1**

The following steps are using CP-168U under **SCO OpenServer** as an example. If you want to install under **SCO UnixWare 7** or **SCO UnixWare 2.1**, the installation procedures are similar as **SCO OpenServer**.

1. Copy the driver file **.tar** to your host.
2. `#tar xvf <driver tar file>`

```
/tmp/moxa/mxinstall
/tmp/moxa/sco.tar
```

3. # cd/tmp/mxinstall
./mxinstall

4. The window shown below will open next. Press any key to continue.

Copyright© 2004 Moxa Technologies Co., Ltd.

All Rights Reserved.

MOXA Smartio Family Device Driver Installation (Ver. 1.6)

For SCO UNIX System V/386 Release 3.2

Tar files, please wait.....O.K.

Press any key to continue

5. The **Basic Configuration** window will open next. Under SCO Unix/SCO Open Server, you can install up to four MOXA Smartio Multiport Serial Boards.

MOXA Smartio Family Installation Utility (Ver 1.6)

Smartio Family Basic Configuration				
Board No.	Board Type	I/O Address	Interrupt	Bus/Dev No.
1	None	-----	-----	-----
2	None	-----	-----	-----
3	None	-----	-----	-----
4	None	-----	-----	-----
PgDn: getty Setting		Esc: Exit		
Enter: Confirm Input Value		Tab: Change Item		

6. Press **Enter** to select the MOXA Multiport Serial Board you installed. For example, select "CP-168U", and press **Enter**.

None
C168 ISA Series
C104 ISA Series
C168 PCI Series

C104 PCI Series
CP-104U Series
CP-168U Series
CP-104JU Series

7. Some basic information of this board will be shown next, such as I/O address, Bus No., Device No. Since you selected the PCI board you installed, the resource was assigned to this board by the SCO system.

PCI Boards Selecting	
1	I/O Addr= AC00, BusNo=2, DevNo=13
Enter: Select ESC: Exit	

8. Press **Enter** to return to the main screen.

Smartio Family Basic Configuration				
Board No.	Board Type	I/O Address	Interrupt	Bus/Dev No.
1	CP-168U Series	AC00	5	2/13
2	None	-----	-----	-----
3	None	-----	-----	-----
4	None	-----	-----	-----
PgDn: getty Setting			Esc: Exit	
Enter: Confirm Input Value			Tab: Change Item	

9. Press **Esc** to save the configuration and exit.

Save configuration changes? (Y/N)

10. The driver files will be copied to the SCO system. Press any key to continue.

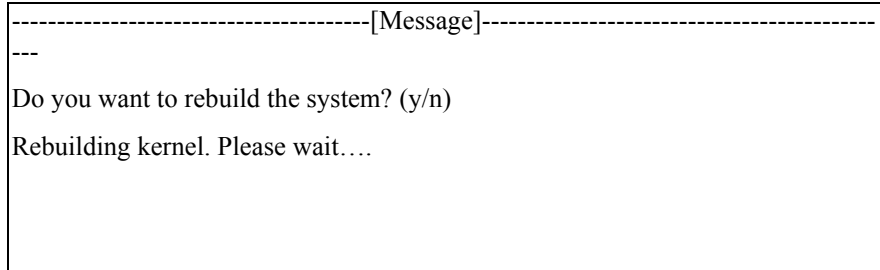
-----[Message]----- --- Copying driver files and configuring system. Please wait... Press any key to continue! _

11. Press **Y** to rebuild the system.

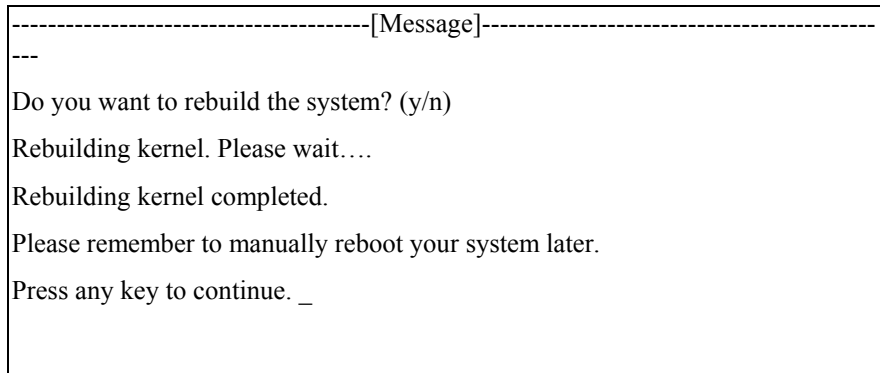
-----[Message]----- --- Do you want to rebuild the system? (y/n)_



12. The window shown below will open next.



13. After the system is rebuilt, the system will return to shell command. You can use MOXA Smartio Multiport Serial Board now.



4

Serial Programming Tools

Moxa supports a class of easy to use, yet powerful serial programming libraries and communication troubleshooting utilities under Windows NT/2000/XP/2003 and Windows 95/98. Use these MOXA Serial Programming Tools to decrease your software development time.

In the following sections, we describe the installation of the library, and the utilities supported for various programming platforms.

PComm, a professional serial comm tool for PCs, is a software package that runs under Windows NT/2000/XP/2003 and Windows 95/98. *PComm* provides:

- A powerful serial communication library for easy programming in the most popular programming languages. The serial communication library is useful for developing applications for data communications, remote access, data acquisition, and industrial control under Windows NT/2000/XP/2003 or Windows 95/98. It is an simpler solution compared to the more complex Windows Win32 COMM API.
- Useful utilities such as diagnostic, monitor, and terminal emulator.
- Illustrative sample programs,
- Comprehensive on-line documentation.

***PComm* Installation**

To install *PComm*, run \Setup.exe from the diskette enclosed in the package. Please note that the *PComm* diagnostic and monitor utilities are for MOXA boards only; these two utilities will not work with other manufacturers serial boards.

After *PComm* is successfully installed, click on [Start], select [Program Files], and then *PComm* Lite group to select a list of utilities and documents.

***PComm* Programming Library**

The serial communication library assists you in developing serial communications programs for any COM port that complies with Microsoft Win32 API. It facilitates the implementation of multi-process and multi-thread serial communication programs and hence remarkably reduces development time.

This serial communication library provides a complete function library and sample programs for Visual C++, Visual Basic, and Borland Delphi. To view detailed function descriptions and sample programs, click on [Start] → [Program] → [*PComm* Lite] → [*PComm* Lib Help], [*PComm* Porting Notes] or [*PComm* Programming Guide], or refer to the sample programs in the *PComm* directory.

Utilities

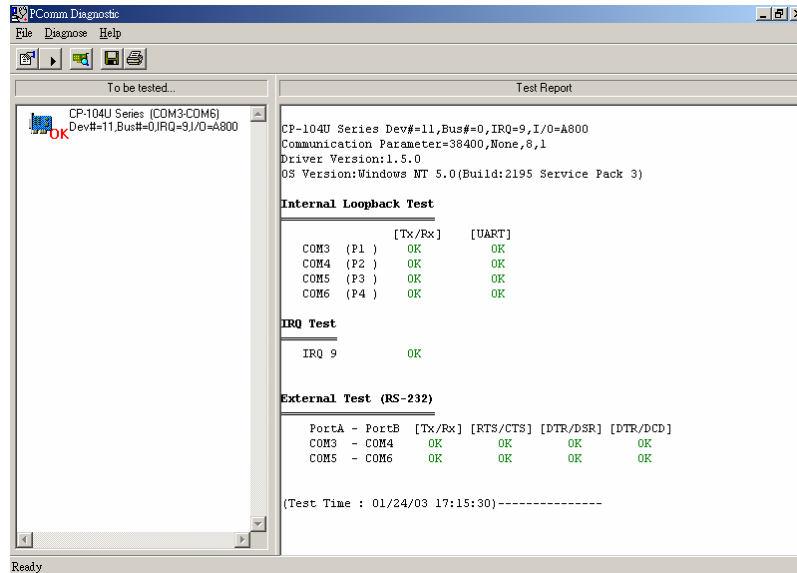
In this section, we give brief descriptions of each utility. For more information about these utilities, see the on-line help from the software diskette.

Diagnostic (for MOXA boards only)

A convenient diagnostic program, ONLY for MOXA boards and ports, provides internal and

external testing of IRQ, TxD/RxD, UART, CTS/RTS, DTR/DSR, DTR/DCD, etc. It allows the user to check the function of both software and hardware.

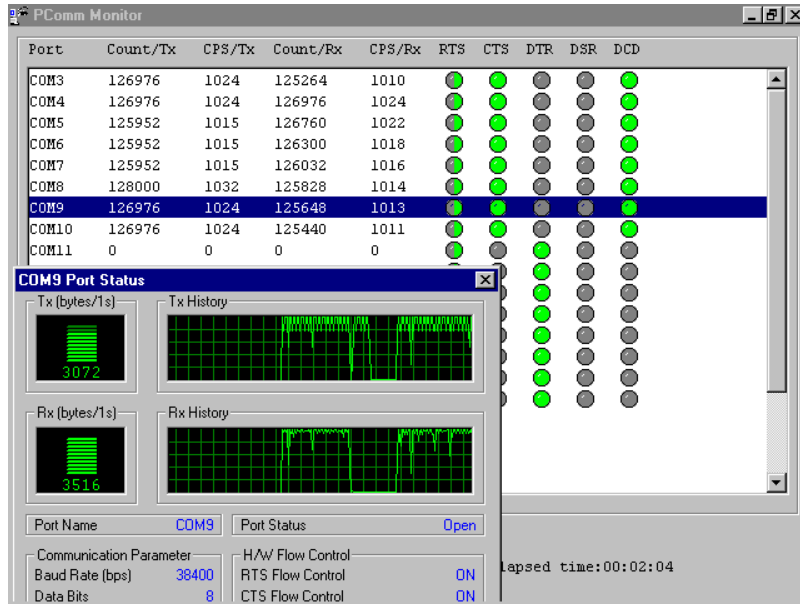
To run the Diagnostic program, click on [Start]→[Program]→[PComm Lite]→[Diagnostic].



Monitor (for MOXA boards under Windows NT/2000/XP/2003)

A useful port status monitoring program allows you to monitor data transmission of selected MOXA COM ports. It monitors data transmission/receiving throughput, and communication line status, with data updated and displayed on the screen at regular time intervals. Click on a specific port to see a graph of the current communication parameters and status of that port.

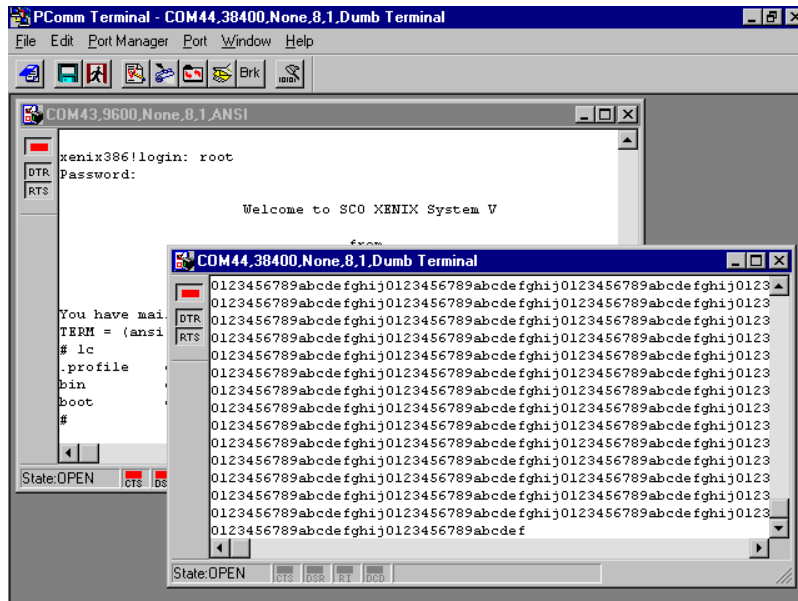
To run the Monitor program, click on [Start]→[Program]→[PComm Lite]→[Monitor].



Terminal Emulator

Terminal Emulator can be used to connect to various ports to see if data transmission is functioning correctly. Terminal Emulator features multi-windows, and supports VT100 and ANSI terminal types. You can transfer data interactively, send patterns periodically, and transfer files using ASCII, XMODEM, YMODEM, ZMODEM, and KERMIT protocols.

To run Terminal Emulator, click on [Start]→[Program]→[*PComm Lite*]→[Terminal Emulator].



5

Connection Cables and Cable Wiring

In this chapter, we illustrate the possible connections and cable wiring for the CP-104UL boards.

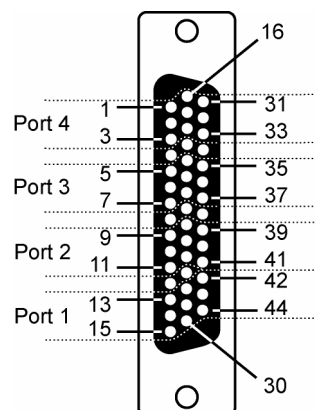
In serial data communications, DTE stands for Data Terminal Equipment, such as a PC's COM1/2, serial printers, and terminals, and DCE stands for Data Communication Equipment, such as modems.

RS-232 Cable Wiring

Board Pinouts—DB44 Female

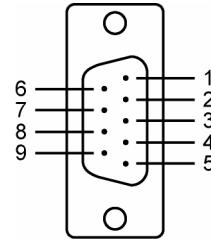
RS-232

Port 1		Port 2		Port 3		Port 4	
13	TxD	9	TxD	5	TxD	1	TxD
14	RxD	10	RxD	6	RxD	2	RxD
15	RTS	11	RTS	7	RTS	3	RTS
28	CTS	24	CTS	20	CTS	16	CTS
29	DTR	25	DTR	21	DTR	17	DTR
30	DSR	26	DSR	22	DSR	18	DSR
42	DCD	39	DCD	35	DCD	31	DCD
44	GND	41	GND	37	GND	33	GND



DB-9/M Pin Assignment (CBL-M44M9x4-50, Opt4-M9B)

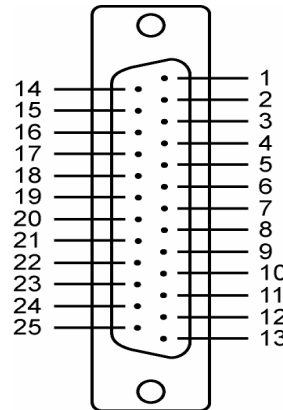
MODE PIN	RS232
1	DCD
2	RxD
3	TxD
4	DTR
5	GND
6	DSR
7	RTS
8	CTS



D
B
-
2
5
/
M

Pin Assignment (CBL-M44M25x4-50)

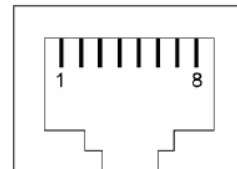
MODE PIN	RS-232
2	TxD
3	RxD
4	RTS
5	CTS
6	DSR
7	GND
8	DCD
20	DTR



R
J
4
5
P
i
n
A
s
s
i
g
n
m
e
n
t

ent (Opt4-RJ45B)

MODE PIN	RS-232
1	DSR
2	RTS
3	GND
4	TxD
5	RxD
6	DCD
7	CTS
8	DTR



6

Troubleshooting

Common Smartio CP-104UL board errors and possible corresponding solutions are given below. If the problem still cannot be solved after following these suggestions, contact your dealer or Moxa for help, or use the Problem Report Form at the end of this manual to report problems to your dealer to receive faster technical support.

General Troubleshooting

1. **The MOXA PCI board cannot be detected by the MOXA driver while installing the driver.**

Hardware causes and solutions:

- A. The board is not installed. Please install the board in an empty PCI slot.
- B. The board is not properly plugged into the system's PCI slot. If that is the case, re-plug the board in a 32-bit PCI slot. It may also be the case that the PCI slot is defective. In this case, try other PCI slots until you find one that works.
- C. The motherboard does not have an available IRQ for the CP-104UL board. Enter the PC's BIOS and make sure an IRQ setting is available in the PCI/PnP settings.

2. **The MOXA board and driver are activated but cannot transfer (transmit/receive) data.**

Hardware Causes and Solutions:

- A. Make sure the cable wiring is connected correctly. Refer to the "Connection Cable and Cable Wiring" chapter to see correct cable connection options.
- B. The cable or the board are probably defective. Please try other ports, cables, or boards to verify this, or use the *PComm* Diagnostic utility to test MOXA board and port conditions. If Diagnostic reports an error, replace the faulty components.

Software Causes and Solutions:

- A. Smartio CP-104UL board will check the line status (CTS) before transmitting data if the RTS/CTS flow control feature is set to Enable in the configuration or application program. Refer to the Connection Cable and Cable Wiring chapter for proper wiring options, and check the line status of the suspected port using the diagnostic LED indicators on the mini tester.
- B. The board's control application might not be correctly written according to the corresponding API of the operating system. To verify the problem, run an existing application known to be good, or use utilities provided by Moxa, such as *Pcomm* Terminal Emulator or HyperTerminal under Windows NT/2000/XP and Windows 95/98.

Windows NT

This section is specific for troubleshooting under Windows NT. For general problems and solutions, please see the previous section, General Troubleshooting.

1. **After the system reboots, the error message, “Another driver in the system, which did not report its resources, has already claimed the interrupt used by xxx.” appears in the Event Log.**

This indicates the MOXA board was found, but the IRQ conflicts with another adapter. Check the PCI BIOS IRQ settings first, and then select an IRQ that is available.

2. **After the system reboots, the error message, “Cannot find any configured MOXA Smartio/Industio series board!” appears in the Event Log.**

Make sure the PCI board is seated firmly in the expansion slot.

3. **The COM number of the Smartio CP-104UL board (Bus No=x, Dev No=x, Port1=COMx), with device number xx, conflicts with others.**

The COM numbers for different boards are in conflict. Change the COM number mappings for the MOXA boards.

4. **Windows NT system panics (blue screen).**

The possible reason is an IRQ or I/O address conflict with other ISA Bus adapters, such as LAN or SCSI boards, or with the system BIOS. Refer to the corresponding problem in the previous section, “General Troubleshooting,” for solutions.

Windows 95/98

This section is specific for troubleshooting under Windows 95/98. For general problems and solutions, see the section, “General Troubleshooting.”

1. **The system fails to find the Smartio CP-104UL board!**

C. The board(s) is (are) not properly plugged into the PCI slot.

D. The PCI slot is defective. Please try other slots until you find one that works.

E. The board itself might be defective.

2. **After the system reboots, the error message “CP-104UL board(BusNo=x, DevNo=x, Port1=COMx) interrupt number is invalid!” appears.**

This indicates that the MOXA board was found, but the IRQ conflicts with another adapter. Make sure the MOXA board’s IRQ does not conflict with another adapter’s IRQ. Check the PCI BIOS IRQ settings and then select an available IRQ for the MOXA boards.

A

Technical Reference

Specifications

- Bus interface: 32-bit PCI
- Number of ports: 4
- I/O address: Assigned by PCI BIOS
- IRQ: Assigned by PCI BIOS
- Data bits: 5, 6, 7, 8
- Stop bits: 1, 1.5, 2
- Parity: None, even, odd, space, mark
- UART: Moxa UART (16C550C or compatible)
- Speed: 50 bps to 921.6Kbps (CP-104UL v2)
50 bps to 230.4Kbps (CP-104UL v1)
- Connectors: DB44 female
- Data signals: RS-232 – TxD, RxD, RTS, CTS, DTR, DSR, DCD, GND
- Surge protection: Embedded 15KV ESD
- Operating temp: 0 to 55°C
- Power Requirement 120 mA max. (+5V) (CP-104UL v2)
231 mA max.(+5V) (CP-104UL v1)
- Dimensions: 120 × 64.5 mm (4.72 × 2.54 in) (CP-104UL v2)
120 × 64.5 mm (4.72 × 2.54 in) (CP-104UL v1)

PCI

The 32-bit Smartio CP-104UL boards comply with PCI specifications 2.1. Hardware configuration for IRQ and I/O addresses is automatically assigned by the PCI BIOS. Hence, you must first plug in the board before installing the software driver.

Unlike ISA slots, different PCI slots in the same PC may have different bus numbers and device numbers with respect to the PCI specifications. The same PCI board will have different system configurations if moved to a different PCI slot. This is called slot-sensitive or slot-dependent, and may apply to PCI slots in PCs with different motherboards, which might use different device number sets. For example, some use 17, 18, 19, and 20 for identifying the respective PCI slots, whereas some use 11, 12, 13 and 14.

Due to this slot-dependency, it is necessary to re-configure the software driver once the board is plugged into a different PCI slot.

Up to 4 Smartio CP-104UL boards can be installed in one system. When installing more than one board, remember the order of boards to distinguish the installed boards.

MOXA UART

The MOXA UART is an intelligent asynchronous controller that supports one full duplex channel that simultaneously transfers data at a transmission speed of 921.6Kbps. To increase overall data

throughput, special features such as on-chip FIFO and on-chip hardware flow control are used to reduce the number of interrupts to the onboard CPU, and to prevent loss of valuable data.

Return Procedure

For product repair, exchange, or refund, you must:

- Provide evidence of original purchase.
- Fill out the Problem Report Form (PRF) as detailed as possible for shorter product repair time.
- Obtain a Return Merchandise Authorization (RMA) number from the sales representative or dealer.
- Carefully pack the product in an anti-static package, and send it, pre-paid, to the dealer. The RMA number should be visible on the outside of the package, and include a description of the problem along with the return address and telephone number of a technical contact.