

1394 PCI Adapter Card Installation Guide

1 PRE INSTALLATION

Thank You

Thank you for selecting a Maxtor 1394 PCI Adapter Card.

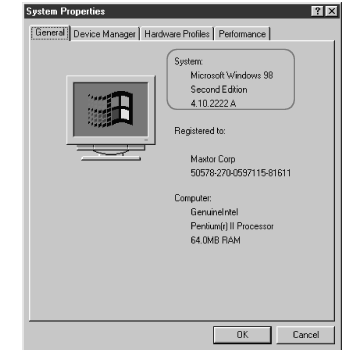
Handling Precautions

Make sure you are properly grounded and handle the 1394 PCI Adapter Card by its edges only.

Hardware/Operating System Requirements

- Pentium II-class or higher
- An available 32-bit PCI slot
- Windows 98 Second Edition
- Windows Millennium
- Windows 2000

Verify your Windows version by right clicking on **My Computer** icon, then click on **Properties**. The window below will appear.



2 HARDWARE INSTALLATION

Adapter Card Installation

Installing the 1394 PCI Adapter Card in a system is a simple process. The card fits into any available 32-bit PCI slot on your computer system's motherboard.

1. Remove the cover of your computer system.
2. Remove the inside slot cover of an available 32-bit PCI slot on the motherboard.
3. Install the 1394 PCI Adapter Card into the open slot (Figure 1).
4. Fasten the 1394 PCI Adapter Card bracket to the system case.



Figure 1
Installing the Adapter Card into a PCI Slot

3 DRIVER SETUP

1. Once you have installed your 1394 PCI Adapter Card, start your computer. You will see that the Windows Installation Wizard has detected "**New Hardware OHCI Compliant IEEE 1394 Host Controller**".
2. The Wizard will prompt you for the location of your Windows drivers.
3. Insert your Windows CD into your CD-ROM drive and specify **CD-ROM** by clicking in the CD-ROM box and then click "**Next**."
4. Click on "Next."

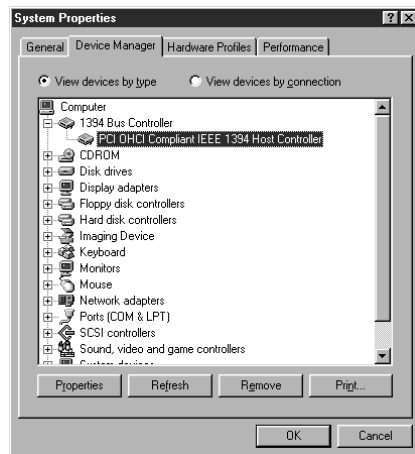


3 DRIVER SETUP CONT.

5. Then click on "Finish."



6. To verify that your new Card has been successfully installed, click on My Computer, Control Panel, System, Device Manager. You should see the "PCI OHCI Compliant IEEE 1394 Host Controller".



Congratulations. Now you are ready to connect your 1394 devices.

W PRODUCT WARRANTY

Maxtor's warranty obligations are limited to the terms set forth: Maxtor warrants only to the original consumer purchaser that new Maxtor 1394 PCI Adapter Card products will be free from defects in material and workmanship for 1 year from the date of original purchase.

For a replacement 1394 PCI Adapter Card, the warranty on the replacement is the remainder of the warranty on the original device or 90 days, whichever is longer. If you discover a defect, Maxtor will replace the Adapter Card at no charge to you, provided you return it during the warranty period, with transportation charges prepaid, to Maxtor in Ireland, Singapore or the USA.

The 1394 PCI Adapter Card must be properly packaged in Maxtor packaging or Maxtor approved packaging to obtain warranty service. Before returning a Maxtor Adapter Card, please contact Maxtor at 1-800-2MAXTOR (in USA) to obtain a Return Material Authorization (RMA) number. A copy of the receipt or a bill of sale bearing the appropriate Maxtor serial number and model number may be required for warranty service. The warranty applies only to the Maxtor Adapter Cards that can be identified by the Maxtor trademark, trade name, serial number or logo affixed to them. Maxtor does not warrant any Adapter Card that is not manufactured by, for or with permission from Maxtor.

This warranty is not applicable to: Abnormal wear and tear; Abuse, unreasonable use, mistreatment, or neglect; Damage caused during installation of the Adapter Card; Damage caused by the equipment or system with which the Adapter Card is used; Damage caused by modification or repair not made or authorized by Maxtor; Adapter Cards whose Maxtor Serial Number has been removed or defaced; Damage to the Adapter Card

interface or power connectors; Damage caused by use of non-Maxtor packaging; Damage caused by improper or improperly used packaging; Adapter Cards that are determined to be stolen.

THIS WARRANTY AND REMEDIES SET FORTH ABOVE ARE EXCLUSIVE AND IN LIEU OF ALL OTHERS, WHETHER ORAL OR WRITTEN, EXPRESSED OR IMPLIED. MAXTOR SPECIFICALLY DISCLAIMS ANY AND ALL IMPLIED WARRANTIES, INCLUDING, WITHOUT LIMITATION, WARRANTIES OF MERCHANTABILITY AND FITNESS FOR A PARTICULAR PURPOSE AND AGAINST INFRINGEMENT. No Maxtor dealer, agent or employee is authorized to make any modification, extension or addition to this warranty.

MAXTOR IS NOT RESPONSIBLE FOR SPECIAL, INCIDENTAL, INDIRECT OR CONSEQUENTIAL DAMAGES RESULTING FROM ANY BREACH OF WARRANTY, OR UNDER ANY OTHER LEGAL THEORY, INCLUDING BUT NOT LIMITED TO LOSS OF DATA, LOSS PROFITS, DOWNTIME, GOODWILL, DAMAGE OR REPLACEMENT OF EQUIPMENT AND PROPERTY, AND ANY COSTS OF RECOVERING, PROGRAMMING OR REPRODUCING ANY PROGRAM OR DATA STORED IN OR USED WITH MAXTOR DISK DRIVES OR MAXTOR EXTERNAL STORAGE PRODUCTS CONTAINING MAXTOR DISK DRIVES OR MAXTOR'S 1394 PCI ADAPTER CARD.

Some states/jurisdictions do not allow the exclusion or limitation of incidental or consequential damages or exclusions of implied warranties, so the above limitations or exclusions may not apply to you. This warranty gives you specific legal rights, and you may also have other rights that vary from jurisdiction to jurisdiction.



CONTACTING MAXTOR

U.S. Technical Assistance and Customer Support

1-800-2MAXTOR (1-800-262-9867) Product Support and Customer Service Agents are available from 6 a.m. to 6 p.m. (mountain time) Monday - Friday.

Maxtor on the Internet

Homepage <http://www.maxtor.com>
FTP Site <ftp://ftp.maxtor.com>

Maxtor via E-mail

Customer Service E-mail www.maxtor.com

Maxtor Outside the U.S. and Canada

Customer Support 303-678-2015
MaxInfo 303-678-2015, press 1
MaxFax® 303-678-2618

European Technical Assistance and Customer Support

Technical assistance and customer support is available from 8.30am to 5pm (GMT) Monday to Thursday and from 8.30am to 4pm (GMT) Friday.

Multilingual Support: English, French and German
Telephone: +353 1 204 1111
E-mail: Eurotech_assistance@maxtor.com
Fax: +353 1 286 1419

Maxtor on the Internet

Home Page: <http://www.maxtor.com>

MaxFax® Service

Use a touch-tone phone to order technical documents from our 24 hour automated fax retrieval system.

Telephone: +353 1 204 1122

Australia & Asia-Pacific Technical Assistance and Customer Support

Language Support: English
Vox: +61-2-9369-3662
Fax: +61-2-9369-2082
MaxFax®: +61-2-9369-4733
BBS: +61-2-9369-4293

Asia-Pacific Technical Assistance

Tech Assistance Email page
<http://www.maxtor.com/contactUs/emailmta.html>

Customer Service Email page
<http://www.maxtor.com/contactUs/emails.html>

All material contained herein Copyright © 2000 Maxtor Corporation. MaxFax and Maxtor are registered trademarks of Maxtor. Other trademarks are the property of their respective holders. Contents subject to change without notice. Printed in the U.S.A.
Maxtor Part #20144500