

# Wireless-G USB2.0 Flex Adapter

---

*User Manual (GWU513)*





## Welcome

Thank you for choosing IOGEAR® to serve your wireless needs. Soon, you will be sharing files or surfing the Internet wirelessly. We hope you will have as much fun using your IOGEAR® Wireless-G USB 2.0 Flex Adapter, as we had designing it.

Rest assured, your IOGEAR® Wireless-G USB 2.0 Flex Adapter is built rock-solid to ensure maximum up-time for you to stay up-and-running. If for any reason you have a problem, we stand behind our products with an industry-leading 3 year factory warranty, so you can have peace-of-mind with your current and future IOGEAR® purchases.


We want you to be happy with your purchase, so we have made every effort to ensure product quality, reliability, and ease-of-use.

**©2003 IOGEAR. All Rights Reserved. PKG-M0095**


IOGEAR®, the IOGEAR® logo is the trademark or registered trademark of IOGEAR®, Inc. Microsoft® and Windows® are registered trademarks of Microsoft® Corporation. IBM is a registered trademark of International Business Machines, Inc. Macintosh, G3/G4 and iMac are registered trademarks of Apple Computer, Inc. IOGEAR® makes no warranty of any kind with regards to the information presented in this document. All information furnished here is for informational purposes only and is subject to change without notice. IOGEAR®, Inc. assumes no responsibility for any inaccuracies or errors that may appear in this document.

## Table of Contents

<b>Package Contents</b> . . . . .	05
<b>Introduction</b> . . . . .	06
<b>Features</b> . . . . .	07
<b>Requirements</b> . . . . .	08
<b>Pictorial Introduction</b> . . . . .	09
<b>Installation.</b> . . . . .	10
- Installtion Procedures . . . . .	10
- Installation Notes – Windows XP . . . . .	13
- Verifying a Successful Installtion . . . . .	15
<b>Configuration for Windows XP</b> . . . . .	17
- To Connect an Available Network via Wireless Zero configuration . . . . .	17
- To Configure the Wireless Networks Properties . . . . .	18
- To Access to Certain Wireless Network Type . . . . .	22
<b>Wireless-G Configuration Tool Basics</b> . . . . .	23
- Tray Icon . . . . .	23
- Right-Click Menu of the Tray Icon . . . . .	24



- Wireless Radio On . . . . .	24
- Wireless Radio Off . . . . .	24
- Remove Status Icon . . . . .	24
- Wireless Network Status . . . . .	25
- Advanced Configuration . . . . .	25
- WEP Encryption . . . . .	25
- IBSS Channel . . . . .	25
- Country/Domain . . . . .	25
- Version Information . . . . .	25
<b>Configuration Program Controls . . . . .</b>	<b>26</b>
- The Status Tab . . . . .	26
- The Configuration Tab . . . . .	30
- The Encryption Tab . . . . .	33
- The Site Survey Tab . . . . .	35
- The IBSS Tab . . . . .	36
- The Domain Tab . . . . .	37



- The About Tab . . . . .	39
<b>The Advanced Properties Control . . . . .</b>	<b>40</b>
- Configuration Profile . . . . .	42
- Fragmentation Threshold . . . . .	42
- Niro Mode . . . . .	42
- Power Save Mode . . . . .	43
- RTS Threshold . . . . .	43
- The LongShort Retry Limit . . . . .	44
<b>Appendix and Troubleshooting . . . . .</b>	<b>45</b>
<b>Specification . . . . .</b>	<b>48</b>
<b>Glossary . . . . .</b>	<b>51</b>
<b>Technical Support . . . . .</b>	<b>55</b>
<b>Radio and TV Interference Statement . . . . .</b>	<b>56</b>
<b>Limited Warranty. . . . .</b>	<b>57</b>

## Package Contents

The package you have received should contain the following items:

- IOGEAR® Wireless-G USB 2.0 Flex Adapter
- Installation/Manual CD
- Quick Start Guide
- Warranty/Registration Card

## Introduction

Being five times faster than the speed of 802.11b network standard devices, the innovative 802.11g standard lets the wireless network become incredibly easier and faster (up to 54Mbps) than ever. Your Wireless-G USB 2.0 Flex Adaptor surely will bring you into such a high-speed network sphere. This document describes how to install your Wireless-G USB 2.0 Flex Adaptor, which aims to let your computer communicate with 802.11 networks quickly and seamlessly. Wireless LAN is local area networking without wires, which uses radio frequencies to transmit and receive data between PCs or other network devices. Additionally, wireless LAN is able to configure either independent networks, which is also known as peer-to-peer or ad-hoc network, or infrastructure networks. The former is suitable for small or temporary peer-to-peer configurations, and the later is offering fully distributed data connectivity via micro cells and roaming.



### Features

- Establish a wireless connection without the hassles and cost of cabling
- Operate Ad-Hoc or Infrastructure mode
- Utilize up to 128-bit WEP encryption
- Enjoy high-speed data transfer rate up to 54 Mbps
- Employ automatic data rate switching which offers maximum reliability, throughput and connectivity
- Possess the network's range up to 100 meters indoor and 400 meters outdoor
- Monitor and configure the network via the supplied friendly-interfaced application –

### **Wireless-G Configuration Tool**

## Requirements

### **System Requirement:**

- Pentium® class PC with 200MHz or faster CPU
- Microsoft Windows 98/ME/2000/XP
- Available USB 2.0 port
- CD-ROM drive

## Pictorial Introduction

Your Wireless-G USB 2.0 Flex Adaptor should be located in the USB port of your computer, and it looks like the following picture:

Concerning to the issue of orientation-controlling, Wireless-G USB 2.0 Flex Adaptor allows you to twist and rotate the USB connector to meet your needs.



# Installation

## Installation Procedures

It's free and easy for you to install your Wireless-G USB 2.0 Flex Adaptor and the attached software – **Wireless-G Configuration Tool**. Simply with a few clicks of the mouse, you will succeed the completion of installation.

To have the Wireless-G USB 2.0 Flex Adaptor operated appropriately, please read and go along with the instructions below carefully. Here we take Windows XP as an example.

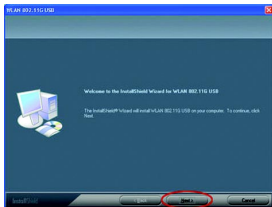
- a) Plug your Wireless-G USB 2.0 Flex Adaptor into a USB 2.0 port on your PC.
- b) Your system will detect the device, and the **Found New Hardware Wizard** dialog box will appear. Choose **Cancel** to proceed.



- c) Insert the supplied Setup CD into your CD-ROM drive, and the Setup Wizard will run automatically. If it does not, please manually execute **Index.htm**.
- d) From the prompted startup window, choose **Install Driver** to begin the installation.



- e) Click **Next** in the **WLAN 802.11G USB** window to proceed. The system will start to copy the drivers found.

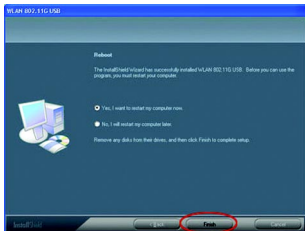


- f) Windows will notify you that the driver has not passed the Windows Logo testing. Because the Wireless-G USB Adapter has been tested to work with Windows XP, please choose **Continue Anyway** in the **Hardware Installation** dialog box.



## Installation

- g) On the **Reboot** screen, you may choose either **Yes, I want to restart my computer now** or **No, I will restart my computer later**. Then click **Finish** to complete the installation.



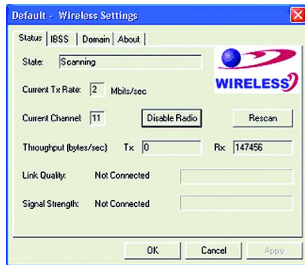
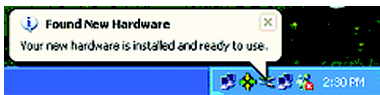
Now you shall find the **Wireless-G Configuration Tool** tray icon, , appeared in the system tray. The installation is entirely finished at the moment.

Double-click the icon to launch the application and open the **Wireless Settings** dialog box, in which you may freely arrange your network connection afterwards.

For more details about Wireless-G Configuration Tool, please refer to **WLAN-G Configuration Tool Basics** in this manual.

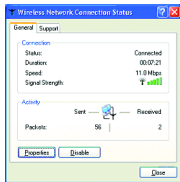
## Installation Notes - Windows XP

If your system is running Windows XP, you shall find that four tabs are contained in the **Wireless Settings** dialog box after you've followed the instructions above and successfully installed the drivers. However, normally, the dialog box should be consisted of seven tabs. This is because Windows XP has its built-in configuration tools – **Windows XP Zero Configuration** to assist you in networking activities. It is recommended to utilize the attached **Wireless-G Configuration Tool** to enjoy more benefits it will bring. Thus, to employ your **Wireless-G Configuration Tool** under Windows XP, please proceed to the next step to change the default settings of **Windows Zero Configuration** to **Wireless-G Configuration Tool**.

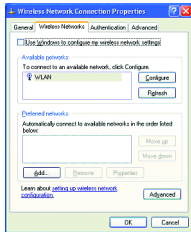


# Installation

- a) Right-click the **Network Connections** icon at the task bar to open the **Wireless Network Connection Status** dialog box, and then select **Properties**.



- b) Choose the **Wireless Networks** tab in the **Wireless Network Connection Properties** dialog box, and remove the check from the **Use Windows to configure my wireless network settings** checkbox.



- c) Click **OK**. Now, you have successfully removed the **Windows Zero Configuration**.

To monitor and configure the network via Wireless-G Configuration Tool, double-click its tray icon, and you shall find seven tabs contained in the popped up Wireless Settings dialog box this time. For more information on Wireless-G Configuration Tool, please refer to



the chapter: **Wireless-G Configuration Tool Basics** below.

**Note:** If you wish to use Windows XP's built-in configuration tools – **Windows XP Zero Configuration**, please refer to the next chapter: **Configuration for Windows XP** to configure the WLAN USB Stick.

## Verifying a Successful Installation

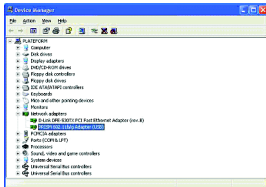
To confirm that the Wireless-G USB 2.0 Flex Adaptor is properly installed, please follow the procedures below.

1. Right-click the **My Computer** desktop icon and choose **Properties** from the opened menu.
2. In the **System Properties** dialog box, click the **Hardware Device** tab, and then choose the **Device Manager** button.
3. In the opened window, expand **Network adapters** to find – **802.11g/b WLAN USB92.0) Adapter**. Right-click over the item and choose **Properties**.
4. From the opened dialog box, on the **General** tab, find the descriptions under

## Installation

the **Device Status** pane to learn if the USB Adapter is working properly. However, if there's an error message shown, please choose **Uninstall** from the opened menu while right-clicking the USB Adapter item, to which a red or yellow icon is attached beside, in the **Device Manager** dialog box. Then restart your system and go through the installation procedures again.

The following picture indicates a successful installation of the Wireless-G USB 2.0 Flex Adaptor.



### Configuration for Windows XP

As you have already known, Windows XP has its built-in configuration tools – **Windows XP Zero Configuration**, to assist you in some basic configurations of wireless network connection. The service starts right after the completion of the installation of Wireless-G USB 2.0 Flex Adaptor, and you will find the icon automatically appears in your system tray like the following picture shows.

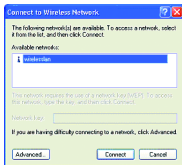


Please refer to the desired topics below to look for more details about utilizing your Wireless-G USB 2.0 Flex Adaptor via **Wireless Zero Configuration**.

### To Connect an Available Network via Wireless Zero Configuration

1. Double-click the **Wireless Network Connection** icon.
2. In the opened **Connect to Wireless Network** dialog box, the currently available networks are listed in the **Available networks** field. From the list, choose an item that you intend to associate with.
3. If the chosen entry requires a WEP encryption key and also automatically provides it, leave the **Network Key** field blank and then choose the **Connect** button to build the connection. Otherwise, you will need to manually enter the identical key in the **Network Key** field before clicking **Connect**.

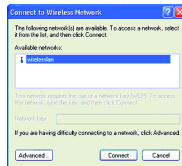
## Configuration for Win XP



4. If the connection is established, there will be a pop-up message shown beside the **Wireless Network Connection** icon on the system tray. You could obtain the information on the status of connection from the message.

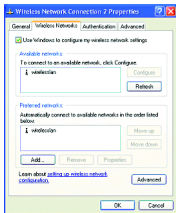
## To Configure the Wireless Networks Properties

If you cannot establish a connection with the chosen entry or you wish to configure further wireless network connection settings, choose the **Advanced** button in the **Connect to Wireless Network** dialogue box.



After clicking **Advanced**, you will enter into the **Wireless Networks** tab of the **Wireless Network Connection Properties** dialog box,

in which three other tabs are found, including **General**, **Authentication**, and **Advanced**. The **Wireless Networks** tab includes almost the main settings for the networking connection. Thus, please check the descriptions below to learn more about the tab.



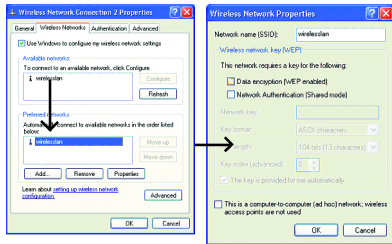
**Note:** For more detailed information about each tab, please refer to the Windows XP Online-Help.

The **Wireless Networks** tab is chiefly consisted of two sections: **Available networks** and **Preferred networks**.

- Under the **Available networks** area, all the available access points or Wireless LAN PC Card equipped computers are displayed. You may wish to click **Refresh** to update the list. If you choose any listed item in the field and then click **Configure**, the **Wireless Network Properties** dialog box will appear. Check the descriptions below the figure to obtain more information about the dialog box.
- In the **Preferred networks** area, you could add any displayed networks to the list by clicking over the intended item from **Available networks** and then selecting

## Configuration for Win XP

the **Add** button. After clicking **Add**, the **Wireless Network Properties** dialog box will appear as Figure 3.2-3 displays. Note that to delete any item under the **Preferred networks** area, simply click on it and then select the **Remove** button. Additionally, you may adjust the items in the list by clicking the desired item and then choosing the **Move up** or **Move down** button. It is, however, important to realize that Windows XP will always choose the first one in the list to establish the networking connection.

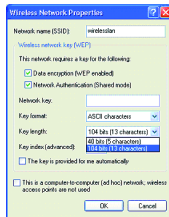


**Note:** Once you choose an item from the **Preferred networks** list and then click **Properties**, the **Wireless Network Properties** dialog box will also be provoked.

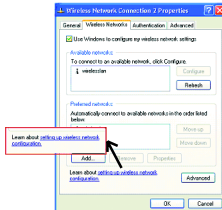
- In the opened **Wireless Network Properties** dialog box, edit texts in the **Network Name (SSID)** field to identify the chosen network entry in the wireless LAN.

## Configuration for Win XP

- If there's a need, go to the **Wireless network key (WEP)** area to set the keys as the associated access point or Wireless LAN PC Card equipped computer requests. To set WEP, select **Data encryption (WEP enabled)** and **Network Authentication**. Then enter the encryption key for the network you intend to connect in the **Network key** filed. Prior to typing texts as the network key, you may wish to define the **Key format** and **Key length**. Click **OK** when you are finished, and you will return to the **Wireless Network Connection Properties** dialog box.



**Note:** For more details of this tab, you may click the link: **setting up wireless network configuration** at the bottom of the **Wireless networks** tab to launch the Windows XP Online-Help.



## Configuration for Win XP

### To Access to Certain Wireless Network Type

The default network type of **Windows XP Zero Configuration** is any available access points (Access Point mode) or WLAN Card equipped computers (Ad-Hoc mode) within the range at the given time. However, you may wish to connect to a certain network type sometimes. To change the default settings, click the **Advanced** button in the **Wireless Network Connection Properties** dialog box.



The **Advanced** dialog box provides three options, **Any available network**, **Access point networks only**, and **Computer-to-computer networks only**. Choose one of them according to your need and click **Close** to finish. Then you will find under the **Available networks** area in the **Wireless Network Connection Properties** dialog box, only the specified networks are displayed.

**Note:** If you wish to use the attached application – **Wireless-G Configuration Tool** of the Wireless-G USB 2.0 Flex Adaptor instead of Windows XP's **Wireless Zero Configuration**, please refer to **Installation Notes –Windows XP** in this manual to change the settings. (Page 13)









## Wireless-G Configuration Tool Basics

After successfully installing the driver for your Wireless-G USB 2.0 Flex Adaptor on your computer, you may now access **Wireless-G Configuration Tool** for better control your wireless network.

In this chapter, four topics are covered: **Tray Icon**, **Right-Click Menu of the Tray Icon**, **Program Controls**, and **The Advanced Properties Tab**.

### Tray Icon

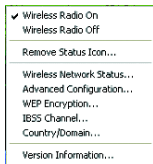
As long as you finish installing **Wireless-G Configuration Tool** on your computer system, you will see its icon, , shown at the right bottom corner of your screen. When you move the mouse cursor over it, the information on the current link quality will appear in the tips. Furthermore, the color of the icon varies with the current state of your network connection. Check the list below to learn the definition of each color.

ICON	QUALITY
	Excellent Link Quality 100%
	Data Frame Errors – Check WEP Settings
	Fair Link Quality
	Poor Link Quality or Not Linked
	Radio Off

## Wireless-G Configuration Tool Basics

### Right Click Menu of the Tray Icon

Right-clicking the **Wireless-G Configuration Tool** icon in the system tray will open a menu as the following picture:



### Wireless Radio On

Choose the **Wireless Radio On** command to receive the radio frequency signal.

### Wireless Radio Off

Choosing the **Wireless Radio Off** command will stop receiving the radio frequency signal.

### Remove Status Icon

If you do not wish to have the **Wireless-G Configuration Tool** icon displayed in the system tray, choose this command to open the **Remove Wireless Status Icon** dialog box, and then choose **Yes** to have the icon disappeared. The icon will reappear next time when you restart the computer. If you intend to remove it permanently, put a check in the checkbox next to the **Remove Status Icon Permanently** option. To launch the utility hereafter, click **Start** on the taskbar, choose **Program** from the menu, and then point to **Wireless-G Configuration Tool** of the submenu of **WirelessLAN 11G USB Tools**. Clicking **No** will undo the removal.

## Wireless-G Configuration Tool Basics



### Wireless Network Status

Choose this command to launch the **Status** tab of the **Wireless Settings** dialog box.

### Advanced Configuration

Choose this command to launch the **Configuration** tab of the **Wireless Settings** dialog box.

### WEP Encryption

Choose this command to launch the **Encryption** tab of the **Wireless Settings** dialog box. This tab offers you a number of options to maintain the secure management in a wireless LAN environment.

### IBSS Channel

Choosing this command will launch the **IBSS** tab of the **Wireless Settings** dialog box.

### Country/Domain

Choosing this command will launch the **Domain** tab of the **Wireless Settings** dialog box.

### Version Information

Choosing this command will launch the **About** tab of the **Wireless Settings** dialog box. The **About** tab reveals general information on your Wireless-G USB 2.0 Flex Adaptor, including the release version of driver and the **Wireless-G Configuration Tool** and the USB network adapter's MAC Address.

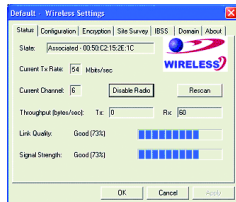
## Configuration Program Controls

When you double-click the **Wireless-G Configuration Tool** tray icon, the **Wireless Settings** dialog box will be prompted as the picture shows below. You may also launch this dialog box via clicking **Start** on the taskbar, choosing **Program** from the menu, and then pointing to **Wireless-G Configuration Tool** from the submenu of **WLAN-G TOOLS**.

The application is a window-based program, which is consisted of seven tabs, including **Status**, **Configuration**, **Encryption**, **Site Survey**, **IBSS**, **Domain**, and **About**. The following figure displays the **Wireless Settings** dialog box. Check the desired items below to obtain more details about these tabs.

### The Status Tab

In the **Wireless Settings** dialog box, click the **Status** tab to bring up the following display. Here presents the status of your current connection. To close the window, click **OK**.



## Configuration Program Controls

**Note:** The texts before “Wireless Settings” in the caption bar of the dialog box are the profile name of the current connection. Thus, the caption contexts vary according to the connectivity at the given time. From the left picture, the associated profile is named “**Default**”. For more information about profiles, please refer to the “**The Configuration Tab**” section in the manual.

From the window, the general information on the status of currently connected entry is presented. You may want to click the **Rescan** button to reinitiate the scanning process and update the status. Later the result of scanning will be renewed and displayed in the window. If you wish to stop the networking connection, click the **Disable Radio** button to stop scanning. Meanwhile, the **State** tab will indicate that the radio has been stopped and the remaining areas under this tab display either a zero or **Not**

**Applicable.** However, if you are already in the disabled radio mode, you will find the **Enable Radio** button here instead. Click **Enable Radio** to regain the link then.

### **State:**

Here displays the MAC Address of the current associated entry, which could be a connected access point in the Infrastructure mode or computers joining in the Peer-to-Peer network.

## Configuration Program Controls

Ad Hoc	The Wireless-G USB Adapter is operating in Peer-to-Peer mode. This field also displays the virtual MAC address used by computers participating in the Ad-Hoc network.
Associated	The Wireless-G USB Adapter is operating in Infrastructure mode. This field also shows the MAC address of the Access Point with which you are communicating.
Listening	Indicates that the adapter is listening on all allowed channels, but has not yet found a peer-to-peer or infrastructure network with which to associate.
Stopped	The radio has been stopped by the Disable Radio Button.
Scanning	The Wireless-G USB Adapter is scanning for transmissions by other wireless adapters on all channels.
Associating	The Wireless-G USB Adapter is in the process of associating with a network.
Not Associated	The Wireless-G USB Adapter has not found any network with which to associate.

## Configuration Program Controls

### **Current Tx Rate:**

This feature indicates the transmission rate of the current connection.

### **Current Channel:**

Here reveals the current channel operated in the wireless network. Note that the channel number differs as the radio scans any available channels in the Infrastructure mode.

### **Throughput (bytes/sec):**

This feature indicates the rates of transmitting (**Tx**) and receiving (**Rx**) data of your Wireless-G USB 2.0 Flex Adaptor within a short period of time; thus, the values vary on a time basis.

### **Link Quality:**

**Link Quality** is based on the percentage of successfully transmitted or received signal of the associated access point beacon within a limited period. The higher the percentage, the better the link quality. The bar graph beside also provides a visual interpretation of the current link quality.

### **Signal Strength:**

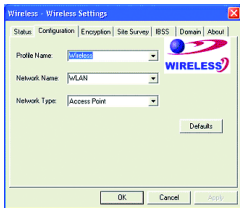
You may learn the received signal strength of the baseband processor of the beacon signal from the **Signal Strength** bar beside, and it's also presented in terms of percentage. As the signal gets stronger, the signal percentage rate gets higher.

Note: **Signal Strength** and **Link Quality** features only apply to the Infrastructure mode. Not applicable to Ad-Hoc mode.

## Configuration Program Controls

### The Configuration Tab

Click this tab to edit different profiles for different network configurations. When finish changing the settings, please click **Apply** to perform the new configuration at last.



**Note:** Choosing the **Advanced Configuration** command from the right-click menu of **Wireless-G Configuration Tool** tray icon will launch this tab too.

### **Profile Name:**

A profile is a named set of operating parameters for your Wireless-G USB 2.0 Flex Adaptor. By clicking the down arrow at the right of this item to display any available profiles for your Wireless-G USB 2.0 Flex Adaptor. You may set values for the chosen pre-defined profile. When you finish setting up the new changes, choose **Apply** to save the profile.

**Note:** You will have at least one profile named **Default**. When selecting any link from the list under the **Site Survey** tab, you have already automatically established a new profile for it under the **Configuration** tab.



## Configuration Program Controls

To identify a new profile, enter texts in the **Profile Name** field. After defining the configurations below, click the **Apply** button to establish a new profile. To switch between any existing profiles, click the arrow button at the right of the **Profile Name** field to open the pull-down menu and then select an intended one from it.

### **Network Name:**

**Network Name**, also known as SSID (Service Set Identifier), must be unique to distinguish itself as a particular wireless network, while all wireless points in this network area share the same SSID. Type the identical SSID in the **Network Name** field to associate with access points or stations within the specified wireless LAN. To change the **Network Name**, highlight the texts in the box, edit a new SSID, and then click **Apply** to save the changes.

### **Network Type:**

Two network types are offered here: **Access Point** and **Peer-to-Peer**. Choose an intended type from the two options. The **Access Point** mode, which is also known as the Infrastructure mode, allows you to communicate with a wired network via an access point. If you attempt to operate this mode, you must indicate the identical **Network Name** to make a communication with the intended access point. On the other hand, the **Peer-to-Peer** mode provides you with the so-called Ad-Hoc communication, which means each wireless-equipped computers within a group is able to connect with each other as an independent wireless LAN without the use of an access point. Each station within this Ad-Hoc network has to define the same **Network Name**.

## Configuration Program Controls

### **Peer-to-Peer Channel:**

This command is only available while you are operating the **Peer-to-Peer** mode, the so-called Ad-Hoc mode. Specify the operating radio frequency channel from the pull-down menu if you are the creator of the wireless network. If you are the joiner, just configure the SSID and click **Apply**. Note that the available channels differ from country to country, and the channel number must be the same between the entries/stations within the range, so that each can communicate with each other. While in the **Access Point** mode, the channel number would be the same as the associated access point. Thus, there's no need to manually set up the value.

### **Transmit Rate:**

This command allows you to indicate the rate of transferring the data packet from the associated access point or any nodes within the range. There are four options for you: **Auto 1 or 2 Mb, 5.5 Mb, 11 Mb, and Fully Automatic**. Specify the rate from the provided options according to the speed of your wireless network, or you may simply choose **Fully Automatic** to set the best available rate according to the received signal quality and the capabilities of the associated access point or station.

## Configuration Program Controls

### The Encryption Tab

Click the **Encryption** tab to define the encryption settings for a specific profile. It offers you various options concerning the so-called WEP (Wired Equivalent Privacy) to maintain the secure management in a wireless LAN environment. See the explanations below for more details, and before making any activation of the new settings, click **Apply**. To leave the window, click **OK**. To undo the new settings, select the **Cancel** button.

**Note:** Choosing the **WEP Encryption** command from the right-click menu of **Wireless-G Configuration Tool** tray icon will launch this tab too.



### **Encryption (WEP security):**

If you choose **Disabled** from the pull-down list, you will have the Wireless-G USB Adapter communicated with all stations within the same networking community without any data encryption. Otherwise, two key lengths are offered: **64 bit** and **128 bit**. Specify a preferred one from the two, so that you may use the identical WEP key to make a communication with the chosen access point.

## Configuration Program Controls

### Create Keys Manually:

Once you set the **Encryption** type as **64 bit** or **128 bit**, you may choose to edit WEP keys manually or create them via the passphrase of your wireless network. If you choose the **Create Keys Manually** option, you may directly enter up to 4 WEP keys for use in WEP encryption. To generate the WEP keys, please define the key entry method as **Alphanumeric** or **Hexadecimal** (for hexadecimal characters, only digits 0-9 and letters A-F are valid). Then edit the texts in the blank fields below, from **Key 1** to **Key 4**, as the encryption codes. Note that these codes/keys shall be identical between the wireless nodes within the range and the access point only. Check the table right to find valid key length of each encryption type:

	64 bit	128 bit
Alphanumeric	5 characters	13 characters
Hexadecimal	10 digits	26 digits

### Use WEP Key:

Indicate which WEP key you intend to apply to activate the WEP encryption from the pull-down menu. Make sure that the intended access point on the wireless network shares the same keys. By default, **Key 1** will be used.

### Create Keys with Passphrase:

Choose this command when the associated wireless network uses a passphrase to create WEP keys. Enter the passphrase

## Configuration Program Controls

string in the **Passphrase** field to generate four encryption keys in the **Key** fields above. Note that only letters A-Z are valid for the **Passphrase** feature.

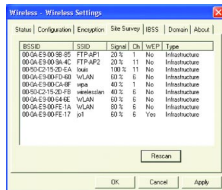
After finish configuring the **Encryption** features, remember to click **Apply** to initiate the new settings.

**Note:** When entering the passphrase here, ensure that you have specified an accurate type of the **Encryption (WEP security)** above according to the associated agent's configuration. Otherwise, the inaccuracy will cause any failure of performance.

### The Site Survey Tab

From the offered information, you may learn the general information on the status of current scan lines, including BSSID, SSID, signal strength, the channel number, WEP type, and network type.

In addition, to directly make an association with any site on the list, double-click the **BSSID** field of the intended entry, and you will be led to the **Status** tab then. Please use **Rescan** to refresh the network information.



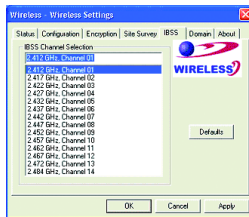
## Configuration Program Controls

### The IBSS Tab

If you, as a creator of the wireless network, are communicating with other stations via the IBSS (802.11 Ad-hoc) mode to form peer-to-peer networks, click the **IBSS (Independent Basic Service Set)** tab to specify an operating radio frequency channel from the pull-down list under the **IBSS Channel Selection** section.

Note that the available channels differ from country to country, and the channel number must be the same between the entries/stations within the range, so that each can communicate with each other. Or you may simply click **Defaults** to automatically determine the channel number for you. When done, click **Apply** to activate the new configuration. On the other hand, while in the **Access Point**

mode, you will find the channel number is the same as the associated access point. Thus, there's no need to manually set the value.



**Note:** Choosing the **IBSS Channel** command from the right-click menu of **Wireless-G Configuration Tool** tray icon will launch this tab too.

## Configuration Program Controls

### The Domain Tab

While in the 2.4GHz range, the network operation may differ from country to country, or domain to domain. This is because the 802.11d protocol was established. To have the operation normally processed, choose the **Domain** tab to change relevant settings. Note that if you specify **Peer-to-Peer** as the network type, you must specify **None** in the **802.11d support** field.

**Note:** Choosing the **Country/Domain** command from the right-click menu of **Wireless-G Configuration Tool** tray icon will launch this tab too.



### 802.11d Support:

**802.11d Support** lets you operate multi-country roaming. To automatically adjust regulatory domain while operating network in different countries, choose either **Strict** or **Flexible** according to your need.

Choosing **Strict** will allow your Wireless-G USB Adapter to communicate with the access points that provide 802.11d support. On this occasion, the Wireless-G USB

## Configuration Program Controls

Adapter scans all communications channels for an access point which provides information about the channels, frequencies, and power levels permitted in your location. Once it finds such an access point, the Wireless-G USB Adapter conforms its operations to these standards. The Wireless-G USB Adapter will not communicate with an access point that does not provide this information, nor will it join or create a peer-to-peer network.

On the other hand, if you choose **Flexible** in this field, your Wireless-G USB Adapter can communicate with any access point it finds. In this case, you must also choose the county in the **Countries/Domains** field which corresponds to your location. Your Wireless-G USB Adapter then searches for an access point

that offers information about the channels, frequencies, and power levels permitted in your location. If it finds such an access point, the Wireless-G USB Adapter conforms its operations to these standards.

If you choose **None**, the task will be terminated.

### **Countries/Domains:**

If you choose **Flexible** above, go on defining the regulatory domain from the drop-down menu of this command according to the country you are located in. More detailed information about the defined country/domain will be listed below afterwards.

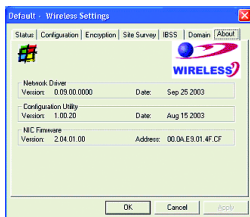
When you are done, remember to click **Apply** to let the new settings take effect.



## Configuration Program Controls

### The About Tab

This tab provides general information on your Wireless-G USB Adaptor, including the following items.



**Note:** Choosing the **Version Information** command from the right-click menu of **Wireless-G Configuration Tool** tray icon will launch this tab too.

### **Network Driver:**

Displays the current version and released date of the Wireless-G USB 2.0 Flex Adaptor's driver.

### **Configuration Utility:**

Displays the current version and released date of **Wireless-G Configuration Tool**.

### **NIC Firmware:**

Displays the current NIC card firmware version and the MAC (Media Access Control) address of your Wireless-G USB Adaptor. It is consisted of 12-digit hexadecimal numbers (48 bits in length) to identify your computer's physical address on the local area network.

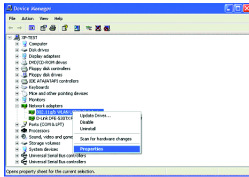
## Advanced Properties Control

The **Advanced Properties** tab provides access to operating parameters for the network adaptor, which are not controlled by the configuration utility. These properties are accessed through the Windows hardware device manager. The following steps describe how to access these properties under Windows XP. For Windows 2000, the details may differ slightly; consult your operating system documentation or your system administrator. Also, the properties that appear in the list displayed by the device manager may differ depending on the adapter installed in your computer.

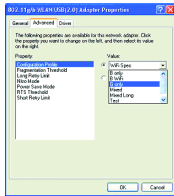
To display these properties, complete the following steps:

1. Right-click the **My Computer** desktop icon and choose **Properties** from the opened menu.
2. Choose the **Hardware** tab in the **System Properties** dialog box, and click **Device Manager**.
3. In the opened window, expand **Network adapters** to find the USB Stick – **802.11g/b WLAN USB(2.0) Adapter**. Right-click over the item and choose **Properties** from the opened menu.

## Advanced Properties Control



4. When you click on the **Advanced** tab in the opened dialog box, a display similar to the following appears.



You shall see the value for any of these properties by clicking on an item displayed in the **Property** field. If a value has been set for the property, it appears in the **Value** field to the right of the list. You may click to specify the **Value** settings from the offered drop-down list. To change a numeric value, simply move the mouse pointer to the **Value** field and click once with the left mouse button to highlight and type the value for the property according to your needs. Choosing **Not Present** under the **Value** field will disable a value.

The following section explains the items in the **Property** list displayed by this tab.

## Advanced Properties Control

### Configuration Profile

Specify a pre-defined profile with standard parameters from here. The provided profiles include:

- **B only** – for operation in 802.11b environments only
- **B WIFI** – for operation in 802.11b environments conforming to Wi-Fi standards
- **G only** – for operation in 802.11g environments only
- **Mixed** – for operation in either 802.11b or 802.11g environments
- **Mixed Long** – for long-range operation in either 802.11b or 802.11g environments
- **Test** – for operation under the widest variety of 802.11 conditions

### Fragmentation Threshold

The fragmentation threshold defines the size (in bytes) at which a packet is split into smaller packets for transmission. You can enter a value from 256 to 2432 in increments of 128. Normally, you should disable this property unless directed otherwise by your Network Administrator.

### Nitro Mode

This feature may increase data throughput over the WLAN and is particularly effective in mixed 802.11b/g environments. This property determines whether Nitro mode is enabled in your wireless USB Stick. A value of 0 (zero) disables this mode; a value of 1 (one) enables it.

### **Power Save Mode**

This property turns the Station Power Save feature on or off, or sets it to Auto. When in **Auto** mode, the station enters Power Save based on the battery condition (XP only) on the host. **Power Save Mode** decreases the amount of power consumed by the adapter by powering off the radio for short periods. Enabling **Power Save Mode** trades off performance for battery life.

- **Auto Dynamic** – specifies Disable mode when on AC power and Dynamic mode when on battery
- **Auto Maximum** – specifies Disable mode when on AC power and Maximum mode when on battery

**Note:** **Auto Dynamic** and **Auto Maximum** require NDIS 5.1 or later, typically available only on Windows XP.

- **Disabled** – specifies continuous access mode and is the default
- **Dynamic** – specifies a fast power saving mode that provides the best combination of performance and power usage
- **Maximum** – specifies the greatest power saving mode

### **RTS Threshold**

The RTS threshold is the packet size (in bytes) at which packet transmission is governed by the RTS/CTS transaction.

You can enter a value from 0 to 2432 in increments of 64 for this property. Normally you should leave this property disabled unless directed otherwise by your Network Administrator.

## Advanced Properties Control

### The Long/Short Retry Limit

The **Long Retry Limit** or **Short Retry Limit** is the maximum number of retransmission of a data packet because of the failure of receiving CTS or ACK.

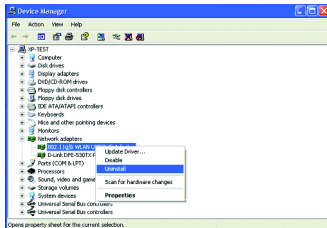
This section provides solutions to problems that you might encounter during the installation and operation of your Wireless-G USB 2.0 Flex Adaptor. Please refer to the desired topics below and read the description to solve your problems.

### Uninstall Wireless-G Configuration Tool and the Stick's Driver

Prior to starting the uninstalling, please make sure that **Wireless-G Configuration Tool** is closed, and then go along with the procedures below to entirely uninstall **Wireless-G Configuration Tool** and the Stick driver.

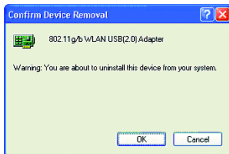
1. Right-click the **My Computer** desktop icon and choose **Properties** from the opened menu.

2. In the **System Properties** dialog box, click the **Hardware** tab, and then choose the **Device Manager** button.
3. In the opened window, expand **Network adapters** to find – **802.11g/b WLAN USB(2.0) Adapter**. Right-click over the item and choose **Uninstall** from the opened menu.

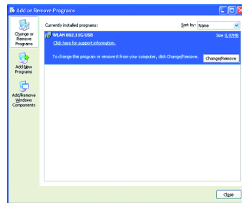


## Appendix and TroubleShooting

4. In the **Confirm Device Removal** message box, click **OK** to proceed with the removal of the hardware.



5. Click **Start** on the taskbar and choose **Control Panel** from the **Settings** menu.
6. Select **Add or Remove Programs** to open the dialog box showed as below.



7. Click the **Change/Remove** button under **WLAN 802.11G USB**.
8. Please follow the on-screen instruction to complete the removal.



### The Wireless-G USB 2.0 Flex Adaptor Does Not Work Properly

If this happens, follow the guidelines below.

1. Right-click the **My Computer** desktop icon and choose **Properties** to open the **System Properties** dialog box.
2. Click the **Hardware** tab and then choose the **Device Manager** button.
3. In the opened window, find your Wireless-G USB Adapter to see if the installation is successful. If you see a yellow exclamation mark beside the item, please go along with the steps below to reinstall the drivers.
4. Uninstall the software and hardware drivers from your PC. (Please refer to the previous topic for details)
5. Restart your computer and repeat the installation procedures as indicated in this chapter in this manual: **Installation of the Wireless-G USB 2.0 Flex Adaptor**.
6. When finished, open the **Device Manager** window again to verify if the installation is approved. The yellow exclamation mark shall be removed for this time.

## Specification

Product Name	Wireless-G USB 2.0 Flex Adaptor
Host Interface	USB2.0
Standards	IEEE 802.11, IEEE 802.11b, IEEE 802.11g
Frequency Band	2.400 ~ 2.4835GHz (subject to local regulations)
Current Drain	Power save mode=15mA, Standby mode=7mA, Transmit mode=370mA, Receive mode=340mA
Spreading	DSSS (11b), OFDM (11g)
Operating Voltage	5.0 V $\pm$ 5%
Data Rate	1Mbps, 2Mbps, 5.5Mbps, 6Mbps, 9Mbps, 11Mbps, 12Mbps, 18Mbps, 24Mbps, 36Mbps, 48Mbps, 54Mbps
Transmit Power	802.11b $\geq$ 17dBm 802.11g 6/9Mbps $\geq$ 17dBm 12/18Mbps $\geq$ 15dBm 24Mbps $\geq$ 14dBm 36Mbps $\geq$ 14dBm 48Mbps $\geq$ 12dBm 54Mbps $\geq$ 12dBm

Receive Sensitivity	<p>802.11b              8% FER@1Mbps <math>\leq</math>-91dBm              8% FER@2Mbps <math>\leq</math>-88dBm              8% FER@5.5Mbps <math>\leq</math>-85dBm              8% FER@11Mbps <math>\leq</math>-83dBm</p> <p>802.11g              10% PER@6Mbps <math>\leq</math>-88dBm              10% PER@9Mbps <math>\leq</math>-87dBm              10% PER@12Mbps <math>\leq</math>-84dBm              10% PER@18Mbps <math>\leq</math>-82dBm              10% PER@24Mbps <math>\leq</math>-79dBm              10% PER@36Mbps <math>\leq</math>-75dBm              10% PER@48Mbps <math>\leq</math>-69dBm              10% PER@54Mbps <math>\leq</math>-68dBm</p>
Modulation	CCK (11b), BPSK, QPSK, 16-QAM, 64-QAM (11g)
Security	64/128 bit WEP Encryption 802.1x, WPA (Windows XP SP1 and Windows 2000 SP4 only)
Internal Antenna Type	Single Chip Antenna

## Specification

Media Access Control	RF activity
Supplied Driver	CSMA/CA with ACK
Warranty	1 year
Temperature Range	0~65°C (Operating)
Humidity	Max. 95% Non-condensing
Operating Range	Open Space: up to 400meters; Indoor: up to 100meters. The transmission speed varies in the surrounding environment.

**802.11b** – 802.11b is one of the IEEE standards for wireless LANs and specifies a data transfer rate of 5.5 and up to 11 megabit per second in the 2.4 gigahertz radio band. 802.11b is recently given other widespread names as Wi-Fi or Wireless Fidelity.

**802.11g** – 802.11g is the newest addition of the IEEE standards for wireless LANs and specifies a data transfer rate up to 54 megabit per second in the 2.4 gigahertz radio band. 802.11g is also part of the family of Wi-Fi.

**Ad-hoc Network** – Ad-hoc network, also known as peer-to-peer network, means a wireless network which is composed only of stations. This type of network is created with a group of wireless-equipped computers. With the wireless devices, each computer, functioning as a server and a client at the same time, can establish a LAN to directly communicate with other computers without any access points involved. It is easy to set up a peer-to-peer network; however, because all stations must be within a specific distance in order to be capable of communicating with each other, it is also limited. Thus, such a type of network is widely used at small networking requirements, like between a few computers or devices at departmental scales.

## Glossary

**IEEE** – IEEE, the Institute of Electrical and Electronics Engineers, is the world's largest technical professional society and is consisted of more than 366,000 members in approximately 150 countries. As a leading authority on areas ranging from for computer engineering, biomedical technology and telecommunications, IEEE endeavours to set more than 800 active consensus standards till now and publish 30 percent of the world's literature in electrical engineering, computers and control technology.

**Infrastructure Network** – Infrastructure network allows you to communicate with wired LAN via an access point. Unlike Ad-hoc network that all wireless-equipped stations within the range may directly communicate with each other, clients of Infrastructure network can only transmit and receive data through the use of a central access point. The associated access point also provides communication with the wired network.

**MAC Address** – The MAC (Media Access Control) address is the serial number of your Network Interface card. It has been burnt into the chip and could not be changed. MAC address is thus unique. While a computer on the network is transferring data, its MAC address is also conveyed and attached to be part of the header of the data packets.

**Roaming** – Roaming is an ability to allow users from one cell (or BSS) to another without losing connection via a wireless device.

**SSID** – SSID, Service Set Identifier, is a 32-character unique identifier for a workgroup of the wireless network. An SSID of one WLAN should be different from that of others, so all access points and other devices intending to communicate with a specific WLAN cannot achieve successful network connectivity unless presenting the identical SSID. From some perspective, an SSID performs as a kind of password to supply a measure of security on the WLAN. However, if an access point is configured to “broadcast” its SSID, this essential security is no longer remained. An SSID is also known as a Network Name.

**USB** – USB, standing for Universal Serial Bus, was designed to make a connection between the computer and its peripherals, such as keyboards, scanners, webcams, printers, etc., via an easy operation of plug-and-play. USB has proved to be a good solution that allows users to quickly and easily connect and add peripherals to computers. Through the USB interface, there's even no need to turn the computer off while adding new peripherals mentioned above to a computer. Due to its convenience and simplicity, USB has won worldwide popularity, and most peripherals for computers these days are designed for the USB standard.

## Glossary

**WEP** – Wired Equivalent Privacy (WEP) is a security mechanism for wireless local area networks. It is designed for 802.11 standard to offer an equal level of security as that of a wired LAN. Through the configurations of encryption, WEP aims to provide security while the nodes with wireless devices are transferring or receiving data packets over radio waves.

**WLAN** – Wireless local area network (WLAN) receives and transmits data over the air by using radio frequency (RF) technology. The vital significance of WLAN is it minimizes the requirements for wired connections and provides not only data connectivity but also user mobility. Without the constraint of physical location, wireless LAN allows clients to transmit and receive data via high-frequency radio waves rather than wires.



If you are still experiencing problems after reading Product User Manual and the Troubleshooting section, you may either contact our technical support at: 1-949-453-8782 OR, simply click our URL address **[www.iogear.com](http://www.iogear.com)** to go to our company website and check the latest version and other information about the product and/or software.

## Radio & TV Interference Statement

WARNING!!! This equipment generates, uses and can radiate radio frequency energy and, if not installed and used in accordance with the instruction manual, may cause interference to radio communications. This equipment has been tested and found to comply with the limits for a Class B computing device pursuant to Subpart J of Part 15 of FCC Rules, which are designed to provide reasonable protection against such interference when operated in a commercial environment. Operation of this equipment in a residential area is likely to cause interference, in which case the user at his own expense will be required to take whatever measures may be required to correct the interference.

## Limited Warranty

IN NO EVENT SHALL THE DIRECT VENDOR'S LIABILITY FOR DIRECT, INDIRECT, SPECIAL, INCIDENTAL OR CONSEQUENTIAL DAMAGES RESULTING FROM THE USE OF THE PRODUCT, DISK OR ITS DOCUMENTATION EXCEED THE PRICE PAID FOR THE PRODUCT.

The direct vendor makes no warranty or representation, expressed, implied, or statutory with respect to the contents or use of this documentation, and especially disclaims its quality, performance, merchantability, or fitness for any particular purpose.

The direct vendor also reserves the right to revise or update the device or documentation without obligation to notify any individual or entity of such revisions, or updates. For further inquires please contact your direct vendor.



**Contact info.**

---

23 Hubble • Irvine, CA 92618 • (P) 949.453.8782 • (F) 949.453.8785 • [www.iogear.com](http://www.iogear.com)