

HST-3000

ADSL2+ Service Interface Module (SIM)

Highlights

- Test the technology, test the service, improve the process
- Thoroughly qualifies ADSL2+ access service: Attenuation, Noise Margin, Bits per Tone, Actual bit rate, Maximum bit rate, % Capacity, and Estimated Loop Length
- Backward compatible to ADSL1
- Supports RE-ADSL (Reach Extended-ADSL2)
- Data layer test options: PPPoE, PPPoA, IPoA, FTP throughput, and Web Browser
- Test interfaces: ADSL2+ 2-wire and Ethernet 10/100
- Test modes: Terminate, Through, and TE (Terminal Equipment)
- Flexible, modular design allows you to buy what you need now and easily upgrade later in the field



In one lightweight, robust, battery operated tester, the JDSU HST-3000 offers more testing power than any other handheld tester on the market. Its scalable, modular design cost-effectively addresses today's needs. Upgrade later in the field to meet emerging requirements through plug-in hardware modules and software options.

JDSU's HST-3000 ADSL2+ SIM delivers comprehensive ADSL test support including ADSL1, ADSL2, and ADSL2+ in one module. Optional data service test support includes: PPPoE, PPPoA, IPoA, Bridged Ethernet, DNS client, DHCP client and server, as well as FTP throughput, Web Browser, IP PING, and IP Trace Route. Test modes include: Terminate Mode (ADSL2+ modem emulation), Through mode (ADSL2+ to Ethernet), and TE mode (Ethernet). With a simple to use GUI, the ability to store multiple configurations and auto test routines, ADSL2+ service provisioning and troubleshooting becomes efficient and thorough. Using scripting features of the HST, specific test scenarios can be consistently performed. Using the results storage and export features of the HST-3000, key ADSL2+ line parameters can be captured for benchmarking and later used in trouble resolution.

Test the Technology

- Max bit rate
- Actual bit rate
- Loop attenuation
- Noise Margin
- Percent (%) capacity
- Bits per tone
- Far end DELT stats
- Estimated loop length

Test the Service

- Data PPPoE, PPPoA, IPoA, Bridged Ethernet
- DNS, DHCP Client/Server, IP PING, IP Trace Route
- FTP throughput
- Web browser

Improve the Process

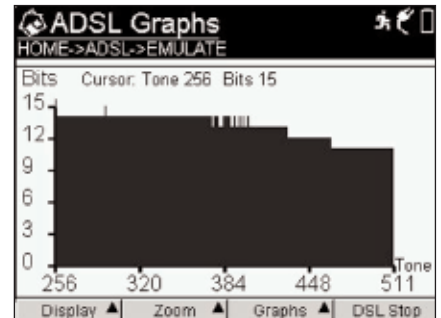
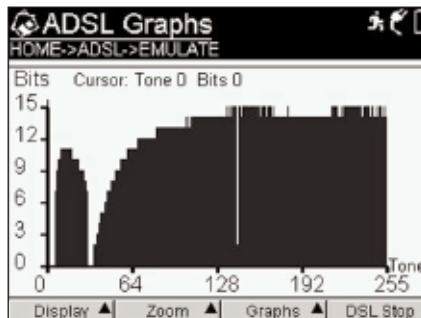
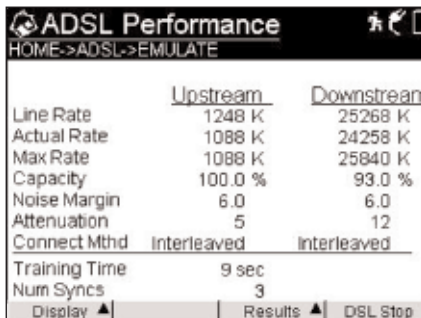
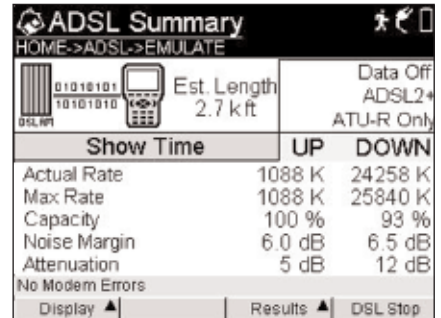
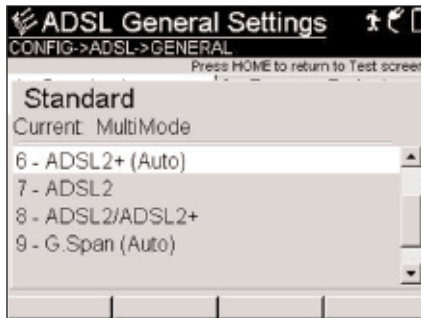
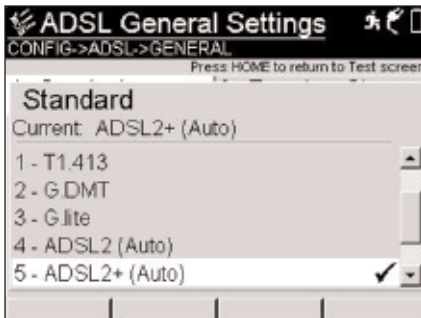
- Multiple configuration storage
- Test results export, serial, USB, Ethernet
- FTP throughput
- Web browser

Added benefits

- IP video testing over ADSL2+ support
- Three modes of operation: Terminate, Through, and TE

The HST-3000 boasts advanced scripting features to improve compliance with operator Methods and Procedures, through interactive, one-button auto-tests. These tests are fully customizable on a per-customer basis, to include pass-fail thresholds.

Use the HST-3000 everywhere you need to quickly isolate your troubles: the network "IN," the loop "OUT" or the CPE. The handheld, rugged and easy-to-use HST-3000 is ideal for field use. It is compact, rugged and can be used in almost all conditions, from inside the CO/Exchange to outside in moderate rain.



Test & Measurement Regional Sales

NORTH AMERICA TEL: 1 866 228 3762 FAX: +1 301 353 9216	LATIN AMERICA TEL: +55 11 5503 3800 FAX: +55 11 5505 1598	ASIA PACIFIC TEL: +852 2892 0990 FAX: +852 2892 0770	EMEA TEL: +49 7121 86 2222 FAX: +49 7121 86 1222	WEBSITE: www.jdsu.com
---	--	---	---	--